



TOGETHER
for a sustainable future

OCCASION

This publication has been made available to the public on the occasion of the 50th anniversary of the United Nations Industrial Development Organisation.



TOGETHER
for a sustainable future

DISCLAIMER

This document has been produced without formal United Nations editing. The designations employed and the presentation of the material in this document do not imply the expression of any opinion whatsoever on the part of the Secretariat of the United Nations Industrial Development Organization (UNIDO) concerning the legal status of any country, territory, city or area or of its authorities, or concerning the delimitation of its frontiers or boundaries, or its economic system or degree of development. Designations such as “developed”, “industrialized” and “developing” are intended for statistical convenience and do not necessarily express a judgment about the stage reached by a particular country or area in the development process. Mention of firm names or commercial products does not constitute an endorsement by UNIDO.

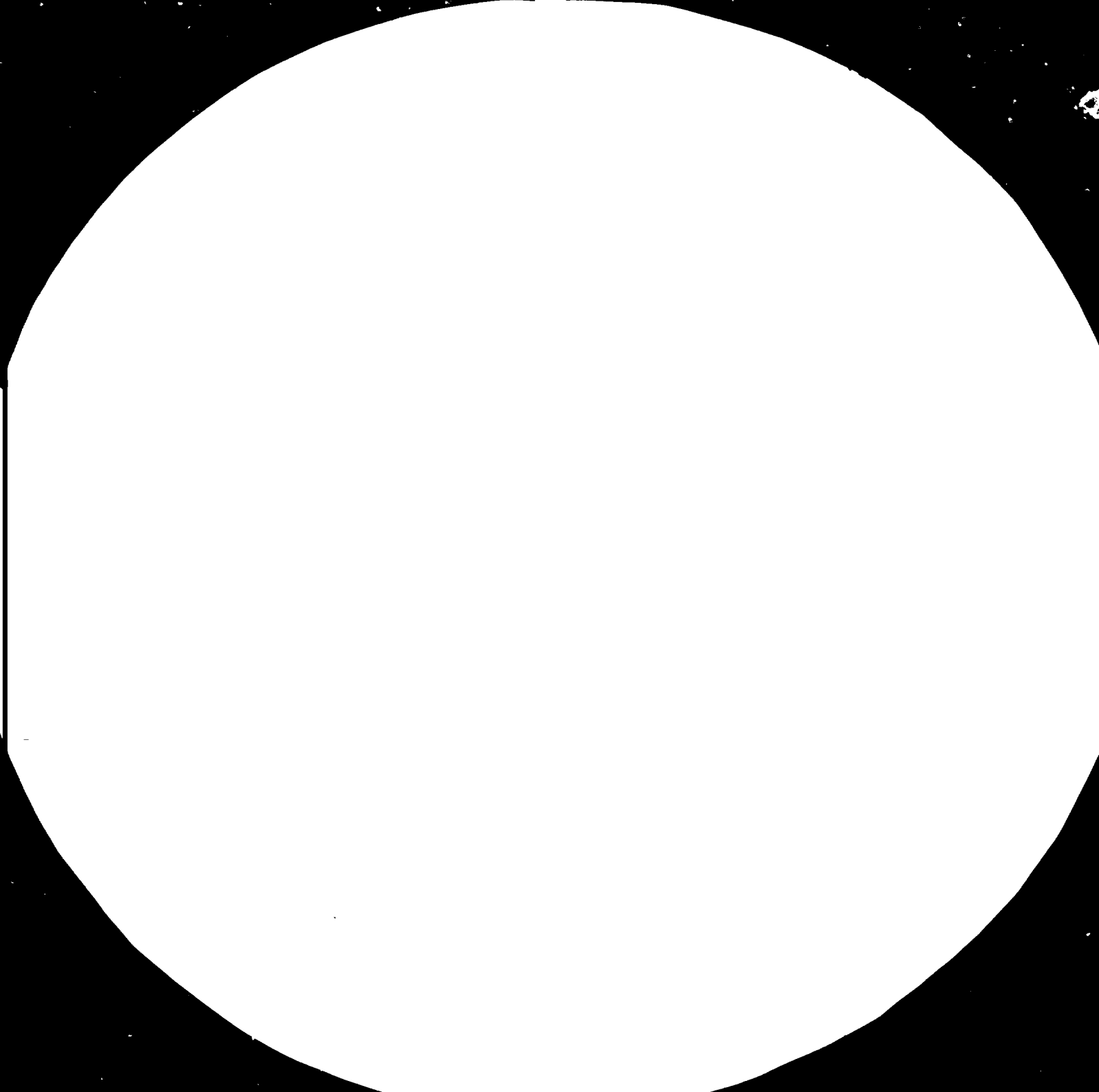
FAIR USE POLICY

Any part of this publication may be quoted and referenced for educational and research purposes without additional permission from UNIDO. However, those who make use of quoting and referencing this publication are requested to follow the Fair Use Policy of giving due credit to UNIDO.

CONTACT

Please contact publications@unido.org for further information concerning UNIDO publications.

For more information about UNIDO, please visit us at www.unido.org





MICROCOPY RESOLUTION TEST CHART

NATIONAL BUREAU OF STANDARDS
STANDARD REFERENCE MATERIAL 1010a
1963-AUGUST EDITION TEST CHART No. 27

14596

Distr.
LIMITED

UNIDO/IS.528
22 April 1985

UNITED NATIONS
INDUSTRIAL DEVELOPMENT ORGANIZATION

ENGLISH

AN INVENTORY OF INDUSTRIAL STATISTICS:
UNIDO DATA BASE, 1985*

Prepared by the
Statistics and Survey Unit
Division for Industrial Studies

-
- * The designations employed and the presentation of material in this document do not imply the expression of any opinion whatsoever on the part of the Secretariat of the United Nations concerning the legal status of any country, city or area or its authorities, or concerning the delimitation of its frontiers or boundaries. This document has been reproduced without formal editing.

CONTENTS

Explanatory notes	(iv)
Key to table numbers and symbols used	(viii)

Country tables

Afghanistan	1
Algeria	2
Angola	3
Argentina	4
Australia	5
Austria	6
Bahamas	7
Bahrain	8
Bangladesh	9
Barbados	10
Belgium	11
Belize	15
Benin	36
Bolivia	12
Botswana	13
Brazil	14
Bulgaria	17
Burkina-Faso	144
Burma	18
Burundi	19
Cameroon	21
Canada	22
Cape Verde	23
Central African Republic	24
Chad	26
Chile	27
China	28
Colombia	29
Congo	30
Costa Rica	32
Cuba	33
Cyprus	34
Czechoslovakia	35
Democratic Kampuchea	20
Democratic Yemen	123
Denmark	37
Dominican Republic	38
Egypt	140
El Salvador	40
Ethiopia	41
Equador	39
Fiji	42
Finland	43
France	44
Gabon	45

Gambia	46
German Democratic Republic	47
Germany, Federal Republic of	48
Ghana	49
Greece	50
Guatemala	51
Guinea	52
Guyana	53
Haiti	54
Honduras	55
Hong Kong	56
Hungary	57
Iceland	58
India	59
Indonesia	60
Iran	61
Iraq	62
Ireland	63
Israel	64
Italy	65
Ivory Coast	66
Jamaica	67
Japan	68
Jordan	69
Kenya	70
Korea, Republic of	71
Kuwait	72
Lao People's Democratic Republic	73
Lebanon	74
Lesotho	75
Liberia	76
Libyan Arab Jamahiriya	77
Luxembourg	78
Macau	79
Madagascar	80
Malawi	81
Malaysia, Sabah	83
Malaysia, Sarawak	84
Malaysia, West	82
Mali	85
Malta	86
Mauritania	87
Mauritius	88
Mexico	89
Mongolia	90
Morocco	91
Mozambique	92
Namibia	94
Nepal	95
Netherlands	96
Netherlands Antilles	97
New Zealand	98
Nicaragua	99
Niger	100

Nigeria	101
Norway	102
Oman	93
Pakistan	103
Panama	104
Papua New Guinea	105
Paraguay	106
Peru	107
Philippines	108
Poland	109
Portugal	110
Puerto Rico	111
Republic of Tanzania	142
Reunion	112
Romania	113
Rwanda	114
Samoa	147
Saudi Arabia	115
Senegal	116
Seychelles	117
Sierra Leone	118
Singapore	119
Solomon Islands	16
Somalia	120
South Africa	121
Spain	124
Sri Lanka	25
Sudan	125
Suriname	126
Swaziland	127
Sweden	128
Switzerland	129
Syrian Arab Republic	130
Thailand	131
Togo	132
Tonga	133
Trinidad and Tobago	134
Tunisia	136
Turkey	137
Uganda	138
Union of Soviet Socialist Republics	139
United Arab Emirates	135
United Kingdom	141
United States	143
Uruguay	145
Venezuela	146
Yemen	148
Yugoslavia	149
Zaire	31
Zambia	150
Zimbabwe	122
Appendix - Definition of variables.....	151

Explanatory Notes

The attached print-outs are an inventory of industrial statistics available in the UNIDO data base (UDB), covering the period 1963 to 1982. The UDB was created and is maintained by the Statistics and Survey Unit (SSU) of the Division for Industrial Studies. This inventory has been designed for the convenience of in-house users who wish to evaluate quickly the general condition of the data for many applications. Comments and suggestions for its improvement will be greatly appreciated.

For all tables based on the industrial statistics file of the UDB, the following source note is suggested:

"Source: UNIDO data base; information supplied by the Statistical Office of the United Nations, with estimates by the UNIDO secretariat."

A description of the format of the inventory, a general definition of the variables included, and a key to table numbers and symbols used, are provided below. These notes refer specifically to the inventory, and therefore special characteristics of the data are described only where it would be necessary for correct interpretation of the print-outs. Users requiring detailed information on the contents of the industrial statistics file should contact the SSU.

A. Format. Each page summarizes the status of the industrial data for one country. The page is divided into six panels, each showing the availability of statistics concerning the six most commonly used variables (employment, wages and salaries, gross output, value added, gross fixed capital formation and the production indexes) at the 3-digit (branch) level of the International Standard Industrial Classification^{1/} (ISIC). The columns show ISIC branches and the rows show years. Wherever data are available, either an asterisk or a 'C' is placed in the appropriate cell - an asterisk to denote that the

^{1/} International Standard Industrial Classification of All Economic Activities (ST/STAT/SER.M/4 Rev.2), United Nations, 1968.

data refer only to a single ISIC branch, and a 'C' to denote that data for the branch are combined with data for one or more other branches.^{2/}

Details on the ISIC location of available data are also supplemented by an indicator of the relative importance of those ISIC branches to which available data refer. Just above the year headings on the panels, a plus sign (+) appears wherever the sum of the 1975 base weights^{3/} corresponding to ISIC branches covered by data exceeds 80 per cent of all the 1975 base weights within the manufacturing sector.

Under the six panels is a summary, by year, of the number of ISIC 3-digit branches (out of a possible 28) that are covered by data for each of the six variables in the industrial statistics file^{4/}.

B. Definition of variables. Although the data generally conform to the international definitions as recommended by the United Nations,^{5/} the UDB statistical series for tables 04, 14 and 20 require additional explanation. For each of these tables, the international recommendations recognize alternative definitions, and differences in definition will be reflected numerically in the data. At the same time, the primary purpose for

^{2/} Within this format, it is not possible to distinguish which of the ISIC branches are combined. However, details on the ISIC composition of each item of data can be supplied, on request. ISIC combinations are also identified in the data base by means of a letter code, and a key to these combination codes is available on request.

^{3/} The base weights, i.e. value added, 1975, in U.S. dollars, at the 3-digit (branch) level of ISIC, are regarded as the best available indicator of the significance of a particular branch of industrial activity within a country's manufacturing sector.

^{4/} Actually, the industrial statistics file in the UDB contains 14 data fields, although only six belong to the "consolidated" subset covered by this inventory. For further discussion of this point, see section B, "Definition of variables", below.

^{5/} International Recommendations for Industrial Statistics (ST/STAT/SER.M/48), United Nations, 1968.

developing the UDB series inventoried here was to store, at a single, machine-readable location, the greatest possible country coverage for each variable at the 3-digit level of ISIC, over the longest possible period of time. In order to achieve this end, certain concessions have had to be made regarding definitional differences, with the result that for the four consolidated tables mentioned above, the data may be mixed.

Consolidation produces some degree of incomparability in the data across countries, but this could be viewed as but one source of data incomparability. A more serious one concerns differences in country practices regarding variations in the coverage of establishments (often the exclusion of small establishments) in industrial inquiries on which the data are based. However, occasionally consolidation also results in incomparability of the data within an individual country over time, and this may present more serious problems for some applications of the data set.^{6/}

The main features of the consolidation process are as follows:

For table 04, employment, the preferred indicator is the average number of employees, although the number of persons engaged is accepted if it is the only series available. However, if both series are available for some years, selection of one or the other definition is guided by the criterion that consistency of the definition through time is more important than entering data on the number of employees everywhere possible. For this reason, data on the number of persons engaged has sometimes been selected for the consolidated table.

^{6/} Users engaged in analyses for which the numerical effects of this mixing would present a serious limitation on the data's utility are advised that unconsolidated series are also available in the UDB, but of course with more limited time depth and country coverage. For further information, please consult the SSU.

For tables 14 and 20, the variation in definition relates to the valuation of gross output and value added. The coding system of the UDB distinguishes between two commonly used valuation concepts, producers' prices and factor values. Either valuation is accepted,^{7/} and as in the case of the employment data, the main criterion for selecting one or the other (when there is a choice) is to assure maximum consistency of the valuation concept within a country, both between variables and through time.

An overview of the country data for each of the four consolidated tables affected by differences in definition is provided in the appendix.

^{7/} In cases where the valuation is unknown, the data are also accepted in the consolidation process.

Key to Table Numbers and Symbols Used

Tables:

- 04 = Employment (average number of employees or persons engaged).
- 05 = Wages and salaries paid to employees, in current national currency.
- 14 = Gross output in current national currency (valuation at factor values or producers' values or unknown).
- 20 = Value added in current national currency (valuation at factor values or producers' values or unknown).
- 21 = Gross fixed capital formation in current national currency.
- 51 = Index numbers of industrial production, 1975 = 100.

Symbols:

- blank = Data are not available.
- * = Data available at the 3-digit (branch) level of ISIC.
- C = Data covering this ISIC branch are available but are combined with data for one or more other branches.
- + = 1975 base weight coverage of country data for this table and year exceeds 80 per cent of the base weights for all manufacturing industries.

Country Tables

TABLE 04 EMPLOYMENT

TABLE 05 WAGES AND SALARIES

TABLE 14 GROSS OUTPUT

Table with 12 columns (YEAR 63-88) and 20 rows (ISIC 311/2 to 390) showing employment data.

Table with 12 columns (YEAR 63-88) and 20 rows (ISIC 311/2 to 390) showing wages and salaries data.

Table with 12 columns (YEAR 63-88) and 20 rows (ISIC 311/2 to 390) showing gross output data.

TABLE 20 VALUE ADDED

TABLE 21 GROSS FIXED CAPITAL FORMATION

TABLE 51 PRODUCTION INDEXES

Table with 12 columns (YEAR 63-88) and 20 rows (ISIC 311/2 to 390) showing value added data.

Table with 12 columns (YEAR 63-88) and 20 rows (ISIC 311/2 to 390) showing gross fixed capital formation data.

Table with 12 columns (YEAR 63-88) and 20 rows (ISIC 311/2 to 390) showing production indexes data.

TOTALS

Summary table with 12 columns (YEAR 63-88) and 5 rows (TABLE 04, 05, 14, 20, 21) showing totals for various categories.

TABLE 04 EMPLOYMENT

Table with 17 columns (YEAR, ISIC) and 20 rows (311/2 to 390) showing employment data for Austria from 1963 to 1988.

TABLE 05 WAGES AND SALARIES

Table with 17 columns (YEAR, ISIC) and 20 rows (311/2 to 390) showing wages and salaries data for Austria from 1963 to 1988.

TABLE 14 GROSS OUTPUT

Table with 17 columns (YEAR, ISIC) and 20 rows (311/2 to 390) showing gross output data for Austria from 1963 to 1988.

TABLE 20 VALUE ADDED

Table with 17 columns (YEAR, ISIC) and 20 rows (311/2 to 390) showing value added data for Austria from 1963 to 1988.

TABLE 21 GROSS FIXED CAPITAL FORMATION

Table with 17 columns (YEAR, ISIC) and 20 rows (311/2 to 390) showing gross fixed capital formation data for Austria from 1963 to 1988.

TABLE 51 PRODUCTION INDEXES

Table with 17 columns (YEAR, ISIC) and 20 rows (311/2 to 390) showing production indexes data for Austria from 1963 to 1988.

TOTALS

Summary table with 17 columns (YEAR, ISIC) and 5 rows (04, 05, 14, 20, 51) showing totals for various ISIC codes from 1963 to 1988.

UNIDO DATA BASE (STAGE 4)
TABLE 04 EMPLOYMENT

YEAR	6	6	6	6	6	6	6	6	6	6	6	6	6	6	6	6	6	6	6	6	6	6	
151C	3	4	5	6	7	8	9	0	1	2	3	4	5	6	7	8	9	0	1	2	3	4	5

DATA AVAILABLE FOR (05?) BEBARDOS
TABLE 05 WAGES AND SALARIES

YEAR	6	6	6	6	6	6	6	6	6	6	6	6	6	6	6	6	6	6	6	6	6	6	
151C	3	4	5	6	7	8	9	0	1	2	3	4	5	6	7	8	9	0	1	2	3	4	5

TABLE 20 VALUE ADDED

YEAR	6	6	6	6	6	6	6	6	6	6	6	6	6	6	6	6	6	6	6	6	6	6	
151C	3	4	5	6	7	8	9	0	1	2	3	4	5	6	7	8	9	0	1	2	3	4	5

TABLE 21 GROSS FIXED CAPITAL FORMATION

YEAR	6	6	6	6	6	6	6	6	6	6	6	6	6	6	6	6	6	6	6	6	6	6	
151C	3	4	5	6	7	8	9	0	1	2	3	4	5	6	7	8	9	0	1	2	3	4	5

TABLE 22 GROSS VALUE ADDED

YEAR	6	6	6	6	6	6	6	6	6	6	6	6	6	6	6	6	6	6	6	6	6	6	
151C	3	4	5	6	7	8	9	0	1	2	3	4	5	6	7	8	9	0	1	2	3	4	5

YEAR	6	6	6	6	6	6	6	6	6	6	6	6	6	6	6	6	6	6	6	6	6	6	
151C	3	4	5	6	7	8	9	0	1	2	3	4	5	6	7	8	9	0	1	2	3	4	5

TABLE 15 PRODUCTION INDICES

YEAR	6	6	6	6	6	6	6	6	6	6	6	6	6	6	6	6	6	6	6	6	6	6	
151C	3	4	5	6	7	8	9	0	1	2	3	4	5	6	7	8	9	0	1	2	3	4	5

TOTALS

YEAR	6	6	6	6	6	6	6	6	6	6	6	6	6	6	6	6	6	6	6	6	6	6	
151C	3	4	5	6	7	8	9	0	1	2	3	4	5	6	7	8	9	0	1	2	3	4	5

TABLE 04 EMPLOYMENT

Table with 13 columns (YEAR, ISIC, 11 years) and 20 rows (311/2 to 390). All cells contain dots.

TABLE 05 WAGES AND SALARIES

Table with 13 columns (YEAR, ISIC, 11 years) and 20 rows (311/2 to 390). All cells contain dots.

TABLE 14 GROSS OUTPUT

Table with 13 columns (YEAR, ISIC, 11 years) and 20 rows (311/2 to 390). All cells contain dots.

TABLE 20 VALUE ADDED

Table with 13 columns (YEAR, ISIC, 11 years) and 20 rows (311/2 to 390). All cells contain dots.

TABLE 21 GROSS FIXED CAPITAL FORMATION

Table with 13 columns (YEAR, ISIC, 11 years) and 20 rows (311/2 to 390). All cells contain dots.

TABLE 51 PRODUCTION INDEXES

Table with 13 columns (YEAR, ISIC, 11 years) and 20 rows (311/2 to 390). All cells contain dots.

TOTALS

Summary table with 13 columns (YEAR, 11 years) and 5 rows (04, 05, 14, 20, 51). Contains numerical values.

TABLE 04 EMPLOYMENT

Table with columns YEAR, ISIC (3-9) and rows 11/2 to 90. Data cells contain asterisks.

TABLE 05 WAGES AND SALARIES

Table with columns YEAR, ISIC (3-9) and rows 11/2 to 90. Data cells contain asterisks.

TABLE 14 GROSS OUTPUT

Table with columns YEAR, ISIC (3-9) and rows 11/2 to 90. Data cells contain asterisks.

TABLE 20 VALUE ADDED

Table with columns YEAR, ISIC (3-9) and rows 11/2 to 90. Data cells contain asterisks.

TABLE 21 GROSS FIXED CAPITAL FORMATION

Table with columns YEAR, ISIC (3-9) and rows 11/2 to 90. Data cells contain asterisks.

TABLE 51 PRODUCTION INDEXES

Table with columns YEAR, ISIC (3-9) and rows 11/2 to 90. Data cells contain asterisks.

TOTALS

Summary table with columns TABLE, YEAR (3-9) and rows 04, 14, 20, 51. Values are in scientific notation (e.g., 2.2E08).

TABLE 04 EMPLOYMENT

YEAR	6	6	6	6	6	6	7	7	7	7	7	7	7	7	7	8	8	8		
ISIC	3	4	5	6	7	8	9	0	1	2	3	4	5	6	7	8	9	0	1	2
J11/2																				
J13																				
J14																				
J21																				
J22																				
J23																				
J24																				
J31																				
J32																				
J41																				
J42																				
J51																				
J52																				
J53																				
J54																				
J55																				
J56																				
J58																				
J59																				
J71																				
J72																				
J81																				
J82																				
J83																				
J84																				
J85																				
J90																				

TABLE 20 VALUF ADDED

YEAR	6	6	6	6	6	6	7	7	7	7	7	7	7	7	7	8	8	8		
ISIC	3	4	5	6	7	8	9	0	1	2	3	4	5	6	7	8	9	0	1	2
J11/2																				
J13																				
J14																				
J21																				
J22																				
J23																				
J24																				
J31																				
J32																				
J41																				
J42																				
J51																				
J52																				
J53																				
J54																				
J55																				
J56																				
J58																				
J59																				
J71																				
J72																				
J81																				
J82																				
J83																				
J84																				
J85																				
J90																				

TABLE 04
05
14
20
21
51

YEAR	6	6	6	6	6	6	7	7	7	7	7	7	7	7	7	8	8	8		
TABLE	3	4	5	6	7	8	9	0	1	2	3	4	5	6	7	8	9	0	1	2
04																				
05																				
14																				
20																				
21																				
51	2	2	2	2	2	2	2	2	2	2	2	2	2	2	2	2	2	2	2	2

TABLE 05 WAGES AND SALARIES

YEAR	6	6	6	6	6	6	7	7	7	7	7	7	7	7	7	8	8	8		
ISIC	3	4	5	6	7	8	9	0	1	2	3	4	5	6	7	8	9	0	1	2
J11/2																				
J13																				
J14																				
J21																				
J22																				
J23																				
J24																				
J31																				
J32																				
J41																				
J42																				
J51																				
J52																				
J53																				
J54																				
J55																				
J56																				
J58																				
J59																				
J71																				
J72																				
J81																				
J82																				
J83																				
J84																				
J85																				
J90																				

TABLE 21 GROSS FIXED CAPITAL FORMATION

YEAR	6	6	6	6	6	6	7	7	7	7	7	7	7	7	7	8	8	8		
ISIC	3	4	5	6	7	8	9	0	1	2	3	4	5	6	7	8	9	0	1	2
J11/2																				
J13																				
J14																				
J21																				
J22																				
J23																				
J24																				
J31																				
J32																				
J41																				
J42																				
J51																				
J52																				
J53																				
J54																				
J55																				
J56																				
J58																				
J59																				
J71																				
J72																				
J81																				
J82																				
J83																				
J84																				
J85																				

TABLE 04 EMPLOYMENT

TABLE 05 WAGES AND SALARIES

TABLE 14 GROSS OUTPUT

Table with columns YEAR 6-8, 8 7, 7 7, 7 7, 7 7, 7 7, 7 7, 7 7, 8 8, 8 8 and rows ISIC 311/2 to 390. Data is sparse with many dots.

Table with columns YEAR 6-8, 8 7, 7 7, 7 7, 7 7, 7 7, 7 7, 7 7, 8 8, 8 8 and rows ISIC 311/2 to 390. Data is sparse with many dots.

Table with columns YEAR 6-8, 8 7, 7 7, 7 7, 7 7, 7 7, 7 7, 7 7, 8 8, 8 8 and rows ISIC 311/2 to 390. Data is sparse with many dots.

TABLE 20 VALUE ADDED

TABLE 21 GROSS FIXED CAPITAL FORMATION

TABLE 51 PRODUCTION INDEXES

Table with columns YEAR 6-8, 8 7, 7 7, 7 7, 7 7, 7 7, 7 7, 7 7, 8 8, 8 8 and rows ISIC 311/2 to 390. Data is sparse with many dots.

Table with columns YEAR 6-8, 8 7, 7 7, 7 7, 7 7, 7 7, 7 7, 7 7, 8 8, 8 8 and rows ISIC 311/2 to 390. Data is sparse with many dots.

Table with columns YEAR 6-8, 8 7, 7 7, 7 7, 7 7, 7 7, 7 7, 7 7, 8 8, 8 8 and rows ISIC 311/2 to 390. Data is sparse with many dots.

TOTALS

Summary table with columns YEAR 6-8, 8 7, 7 7, 7 7, 7 7, 7 7, 7 7, 7 7, 8 8, 8 8 and rows TABLE 04, 05, 14, 20, 21, 51. Values: 28, 21, 7, 28, 8 6 8 8 8 7 7 7 7 7 7 27 7 7 2 2 2 2

TABLE 04 EMPLOYMENT

Table with 13 columns (YEAR, ISIC 3-12) and 20 rows (311/2 to 390). All cells contain asterisks.

TABLE 05 WAGES AND SALARIES

Table with 13 columns (YEAR, ISIC 3-12) and 20 rows (311/2 to 390). All cells contain asterisks.

TABLE 14 GROSS OUTPUT

Table with 13 columns (YEAR, ISIC 3-12) and 20 rows (311/2 to 390). All cells contain asterisks.

TABLE 20 VALUE ADDED

Table with 13 columns (YEAR, ISIC 3-12) and 20 rows (311/2 to 390). All cells contain asterisks.

TABLE 71 GROSS FIXED CAPITAL FORMATION

Table with 13 columns (YEAR, ISIC 3-12) and 20 rows (311/2 to 390). Contains asterisks and some 'C' characters.

TABLE 51 PRODUCTION INDEXES

Table with 13 columns (YEAR, ISIC 3-12) and 20 rows (311/2 to 390). All cells contain asterisks.

TOTALS

Summary table with 13 columns (YEAR, ISIC 3-12) and 5 rows (04, 05, 14, 20, 51). Contains numerical values.

TABLE 04 EMPLOYMENT

Table with 15 columns (YEAR 63-88) and 15 rows (ISIC 311/2-390) showing employment data.

TABLE 05 WAGES AND SALARIES

Table with 15 columns (YEAR 63-88) and 15 rows (ISIC 311/2-390) showing wages and salaries data.

TABLE 14 GROSS OUTPUT

Table with 15 columns (YEAR 63-88) and 15 rows (ISIC 311/2-390) showing gross output data.

TABLE 20 VALUE ADDED

Table with 15 columns (YEAR 63-88) and 15 rows (ISIC 311/2-390) showing value added data.

TABLE 21 GROSS FIXED CAPITAL FORMATION

Table with 15 columns (YEAR 63-88) and 15 rows (ISIC 311/2-390) showing gross fixed capital formation data.

TABLE 51 PRODUCTION INDEXES

Table with 15 columns (YEAR 63-88) and 15 rows (ISIC 311/2-390) showing production indexes data.

TOTALS

Summary table with 15 columns (YEAR 63-88) and 3 rows (CO, I, S) showing totals for each category.

TABLE 04 EMPLOYMENT

TABLE 05 WAGES AND SALARIES

TABLE 14 GROSS OUTPUT

Table with columns: YEAR, ISIC, and 15 data columns (3-17). Rows include ISIC codes 311/2, 313, 314, 321, 322, 323, 324, 331, 332, 341, 342, 351, 352, 353, 354, 355, 356, 361, 362, 369, 371, 372, 381, 382, 383, 384, 385, 390.

Table with columns: YEAR, ISIC, and 15 data columns (3-17). Rows include ISIC codes 311/2, 313, 314, 321, 322, 323, 324, 331, 332, 341, 342, 351, 352, 353, 354, 355, 356, 361, 362, 369, 371, 372, 381, 382, 383, 384, 385, 390.

Table with columns: YEAR, ISIC, and 15 data columns (3-17). Rows include ISIC codes 311/2, 313, 314, 321, 322, 323, 324, 331, 332, 341, 342, 351, 352, 353, 354, 355, 356, 361, 362, 369, 371, 372, 381, 382, 383, 384, 385, 390.

TABLE 20 VALUE ADDED

TABLE 21 GROSS FIXED CAPITAL FORMATION

TABLE 51 PRODUCTION INDEXES

Table with columns: YEAR, ISIC, and 15 data columns (3-17). Rows include ISIC codes 311/2, 313, 314, 321, 322, 323, 324, 331, 332, 341, 342, 351, 352, 353, 354, 355, 356, 361, 362, 369, 371, 372, 381, 382, 383, 384, 385, 390.

Table with columns: YEAR, ISIC, and 15 data columns (3-17). Rows include ISIC codes 311/2, 313, 314, 321, 322, 323, 324, 331, 332, 341, 342, 351, 352, 353, 354, 355, 356, 361, 362, 369, 371, 372, 381, 382, 383, 384, 385, 390.

Table with columns: YEAR, ISIC, and 15 data columns (3-17). Rows include ISIC codes 311/2, 313, 314, 321, 322, 323, 324, 331, 332, 341, 342, 351, 352, 353, 354, 355, 356, 361, 362, 369, 371, 372, 381, 382, 383, 384, 385, 390.

TOTALS

Summary table with columns: TABLE, YEAR (3-17), and 15 data columns. Rows include tables 04, 05, 14, 20, 21, 51 and their corresponding values for years 18, 19, 20.

TABLE 04 EMPLOYMENT

Table with 17 columns (YEAR, ISIC 3-8) and 20 rows (311/2 to 390). All cells contain asterisks.

TABLE 05 WAGES AND SALARIES

Table with 17 columns (YEAR, ISIC 3-8) and 20 rows (311/2 to 390). All cells contain asterisks.

TABLE 14 GROSS OUTPUT

Table with 17 columns (YEAR, ISIC 3-8) and 20 rows (311/2 to 390). All cells contain asterisks.

TABLE 20 VALUE ADDED

Table with 17 columns (YEAR, ISIC 3-8) and 20 rows (311/2 to 390). All cells contain asterisks.

TABLE 21 GROSS FIXED CAPITAL FORMATION

Table with 17 columns (YEAR, ISIC 3-8) and 20 rows (311/2 to 390). All cells contain asterisks.

TABLE 51 PRODUCTION INDEXES

Table with 17 columns (YEAR, ISIC 3-8) and 20 rows (311/2 to 390). All cells contain asterisks.

TOTALS

Summary table with 17 columns (YEAR, ISIC 3-8) and 5 rows (04, 05, 20, 21, 51). Values are mostly 28, with 51 having values 27, 26, 26, 26, 28, 28, 28, 28, 28, 28, 28, 28, 28, 25, 25, 25, 25, 18.

TABLE 04 EMPLOYMENT

Table with 13 columns: YEAR, ISIC, and 11 data columns (6-8). Rows 311/2 to 390.

TABLE 05 WAGES AND SALARIES

Table with 13 columns: YEAR, ISIC, and 11 data columns (6-8). Rows 311/2 to 390.

TABLE 14 GROSS OUTPUT

Table with 13 columns: YEAR, ISIC, and 11 data columns (6-8). Rows 311/2 to 390.

TABLE 20 VALUE ADDED

Table with 13 columns: YEAR, ISIC, and 11 data columns (6-8). Rows 311/2 to 390.

TABLE 21 GROSS FIXED CAPITAL FORMATION

Table with 13 columns: YEAR, ISIC, and 11 data columns (6-8). Rows 311/2 to 390.

TABLE 51 PRODUCTION INDEXES

Table with 13 columns: YEAR, ISIC, and 11 data columns (6-8). Rows 311/2 to 390.

TOTALS

Summary table with 13 columns: TABLE, YEAR, and 11 data columns (6-8). Rows 04, 05, 14, 20, 21.

TABLE 04 EMPLOYMENT

Table with 15 columns (YEAR 6-8, ISIC 3-2) and 19 rows (311/2 to 390). Data points are represented by dots.

TABLE 05 WAGES AND SALARIES

Table with 15 columns (YEAR 6-8, ISIC 3-2) and 19 rows (311/2 to 390). Data points are represented by dots.

TABLE 14 GROSS OUTPUT

Table with 15 columns (YEAR 6-8, ISIC 3-2) and 19 rows (311/2 to 390). Data points are represented by dots.

TABLE 20 VALUE ADDED

Table with 15 columns (YEAR 6-8, ISIC 3-2) and 19 rows (311/2 to 390). Data points are represented by dots.

TABLE 21 GROSS FIXED CAPITAL FORMATION

Table with 15 columns (YEAR 6-8, ISIC 3-2) and 19 rows (311/2 to 390). Data points are represented by dots.

TABLE 51 PRODUCTION INDEXES

Table with 15 columns (YEAR 6-8, ISIC 3-2) and 19 rows (311/2 to 390). Data points are represented by dots.

TOTALS

Summary table with 15 columns (YEAR 6-8, ISIC 3-2) and 6 rows (04, 05, 14, 20, 21, 51) showing numerical totals for each table.

TABLE 04 EMPLOYMENT

Table with columns for YEAR and ISIC (3, 4, 5, 6, 7, 8, 9, 0, 1, 2) and rows for years from 1911/2 to 1990.

TABLE 05 WAGES AND SALARIES

Table with columns for YEAR and ISIC (3, 4, 5, 6, 7, 8, 9, 0, 1, 2) and rows for years from 1911/2 to 1990.

TABLE 14 GROSS OUTPUT

Table with columns for YEAR and ISIC (3, 4, 5, 6, 7, 8, 9, 0, 1, 2) and rows for years from 1911/2 to 1990.

TABLE 20 VALUE ADDED

Table with columns for YEAR and ISIC (3, 4, 5, 6, 7, 8, 9, 0, 1, 2) and rows for years from 1911/2 to 1990.

TABLE 21 GROSS FIXED CAPITAL FORMATION

Table with columns for YEAR and ISIC (3, 4, 5, 6, 7, 8, 9, 0, 1, 2) and rows for years from 1911/2 to 1990.

TABLE 51 PRODUCTION INDEXES

Table with columns for YEAR and ISIC (3, 4, 5, 6, 7, 8, 9, 0, 1, 2) and rows for years from 1911/2 to 1990.

TOTALS

Summary table with columns for YEAR and ISIC (3, 4, 5, 6, 7, 8, 9, 0, 1, 2) and rows for tables 04, 05, and 51.

TABLE 04 EMPLOYMENT

Table with 17 columns (YEAR, ISIC 3-8) and 20 rows (311/2 to 390). Data points are represented by asterisks and 'C' characters.

TABLE 05 WAGES AND SALARIES

Table with 17 columns (YEAR, ISIC 3-8) and 20 rows (311/2 to 390). Data points are represented by asterisks and 'C' characters.

TABLE 14 GROSS OUTPUT

Table with 17 columns (YEAR, ISIC 3-8) and 20 rows (311/2 to 390). Data points are represented by asterisks and 'C' characters.

TABLE 20 VALUE ADDED

Table with 17 columns (YEAR, ISIC 3-8) and 20 rows (311/2 to 390). Data points are represented by asterisks and 'C' characters.

TABLE 21 GROSS FIXED CAPITAL FORMATION

Table with 17 columns (YEAR, ISIC 3-8) and 20 rows (311/2 to 390). Data points are represented by asterisks and 'C' characters.

TABLE 51 PRODUCTION INDEXES

Table with 17 columns (YEAR, ISIC 3-8) and 20 rows (311/2 to 390). Data points are represented by asterisks and 'C' characters.

TOTALS

Summary table with 17 columns (YEAR, ISIC 3-8) and 5 rows (04, 05, 14, 20, 21). Shows counts for each table across the ISIC categories.

TABLE 04 EMPLOYMENT

Table with 14 columns (YEAR 63-88) and 20 rows (ISIC 11/2 to 90) showing employment data for various sectors.

TABLE 05 WAGES AND SALARIES

Table with 14 columns (YEAR 63-88) and 20 rows (ISIC 11/2 to 90) showing wages and salaries data for various sectors.

TABLE 14 GROSS OUTPUT

Table with 14 columns (YEAR 63-88) and 20 rows (ISIC 11/2 to 90) showing gross output data for various sectors.

TABLE 20 VALUE ADDED

Table with 14 columns (YEAR 63-88) and 20 rows (ISIC 11/2 to 90) showing value added data for various sectors.

TABLE 21 GROSS FIXED CAPITAL FORMATION

Table with 14 columns (YEAR 63-88) and 20 rows (ISIC 11/2 to 90) showing gross fixed capital formation data for various sectors.

TABLE 51 PRODUCTION INDEXES

Table with 14 columns (YEAR 63-88) and 20 rows (ISIC 11/2 to 90) showing production indexes data for various sectors.

TOTALS

Summary table with 14 columns (YEAR 63-88) and 6 rows (TABLE 04, 05, 14, 20, 21, 51) showing totals for each table.

TABLE 04 EMPLOYMENT

Table with columns for YEAR and ISIC (3-9) and rows for years 311/2 to 390.

TABLE 05 WAGES AND SALARIES

Table with columns for YEAR and ISIC (3-9) and rows for years 311/2 to 390.

TABLE 14 GROSS OUTPUT

Table with columns for YEAR and ISIC (3-9) and rows for years 311/2 to 390.

TABLE 20 VALUE ADDED

Table with columns for YEAR and ISIC (3-9) and rows for years 311/2 to 390.

TABLE 21 GROSS FIXED CAPITAL FORMATION

Table with columns for YEAR and ISIC (3-9) and rows for years 311/2 to 390.

TABLE 51 PRODUCTION INDEXES

Table with columns for YEAR and ISIC (3-9) and rows for years 311/2 to 390.

TOTALS

Summary table with columns for TABLE, YEAR, and ISIC (3-9) and rows for tables 04, 05, 14, 20, 21, 51.

TABLE 04 EMPLOYMENT

Table with 18 columns (YEAR 63-88) and 20 rows (ISIC 311/2-390). All cells contain asterisks.

TABLE 05 WAGES AND SALARIES

Table with 18 columns (YEAR 63-88) and 20 rows (ISIC 311/2-390). All cells contain asterisks.

TABLE 14 GROSS OUTPUT

Table with 18 columns (YEAR 63-88) and 20 rows (ISIC 311/2-390). All cells contain asterisks.

TABLE 20 VALUE ADDED

Table with 18 columns (YEAR 63-88) and 20 rows (ISIC 311/2-390). All cells contain asterisks.

TABLE 21 GROSS FIXED CAPITAL FORMATION

Table with 18 columns (YEAR 63-88) and 20 rows (ISIC 311/2-390). All cells contain asterisks.

TABLE 51 PRODUCTION INDEXES

Table with 18 columns (YEAR 63-88) and 20 rows (ISIC 311/2-390). All cells contain asterisks.

TOTALS

Summary table with 18 columns (YEAR 63-88) and 5 rows (TABLE 04, 05, 14, 20, 51). Values range from 27 to 28.

TABLE 04 EMPLOYMENT

Table with 18 columns (YEAR 63-88, ISIC 3-90) and 20 rows of employment data.

TABLE 05 WAGES AND SALARIES

Table with 18 columns (YEAR 63-88, ISIC 3-90) and 20 rows of wages and salaries data.

TABLE 14 GROSS OUTPUT

Table with 18 columns (YEAR 63-88, ISIC 3-90) and 20 rows of gross output data.

TABLE 20 VALUE ADDED

Table with 18 columns (YEAR 63-88, ISIC 3-90) and 20 rows of value added data.

TABLE 21 GROSS FIXED CAPITAL FORMATION

Table with 18 columns (YEAR 63-88, ISIC 3-90) and 20 rows of gross fixed capital formation data.

TABLE 51 PRODUCTION INDEXES

Table with 18 columns (YEAR 63-88, ISIC 3-90) and 20 rows of production indexes data.

TOTALS

Summary table with 18 columns (YEAR 63-88, ISIC 3-90) and 6 rows of totals for tables 04, 05, 14, 20, 21, and 51.

TABLE 04 EMPLOYMENT

Table with 16 columns (YEAR ISIC 3-8) and 28 rows (311/2 to 390). All cells contain asterisks.

TABLE 05 WAGES AND SALARIES

Table with 16 columns (YEAR ISIC 3-8) and 28 rows (311/2 to 390). All cells contain asterisks.

TABLE 14 GROSS OUTPUT

Table with 16 columns (YEAR ISIC 3-8) and 28 rows (311/2 to 390). All cells contain asterisks.

TABLE 20 VALUE ADDED

Table with 16 columns (YEAR ISIC 3-8) and 28 rows (311/2 to 390). All cells contain asterisks.

TABLE 21 GROSS FIXED CAPITAL FORMATION

Table with 16 columns (YEAR ISIC 3-8) and 28 rows (311/2 to 390). All cells contain asterisks.

TABLE 51 PRODUCTION INDEXES

Table with 16 columns (YEAR ISIC 3-8) and 28 rows (311/2 to 390). All cells contain asterisks.

TOTALS

Summary table with 16 columns (YEAR ISIC 3-8) and 5 rows (04 to 51). Values are mostly '28' or '2A'.

TABLE 04 EMPLOYMENT

Table with columns for YEAR (1963-1990) and ISIC (3-90) and rows for various ISIC codes (311/2 to 390).

TABLE 05 WAGES AND SALARIES

Table with columns for YEAR (1963-1990) and ISIC (3-90) and rows for various ISIC codes (311/2 to 390).

TABLE 14 GROSS OUTPUT

Table with columns for YEAR (1963-1990) and ISIC (3-90) and rows for various ISIC codes (311/2 to 390).

TABLE 20 VALUE ADDED

Table with columns for YEAR (1963-1990) and ISIC (3-90) and rows for various ISIC codes (311/2 to 390).

TABLE 21 GROSS FIXED CAPITAL FORMATION

Table with columns for YEAR (1963-1990) and ISIC (3-90) and rows for various ISIC codes (311/2 to 390).

TABLE 51 PRODUCTION INDEXES

Table with columns for YEAR (1963-1990) and ISIC (3-90) and rows for various ISIC codes (311/2 to 390).

TOTALS

Summary table with columns for TABLE (04, 05, 14, 20, 21, 51) and YEAR (63-90) and rows for various ISIC codes (311/2 to 390).

TABLE 04 EMPLOYMENT

Table with 13 columns (YEAR 83-88, ISIC 3-9) and 20 rows of data points.

TABLE 05 WAGES AND SALARIES

Table with 13 columns (YEAR 83-88, ISIC 3-9) and 20 rows of data points.

TABLE 14 GROSS OUTPUT

Table with 13 columns (YEAR 83-88, ISIC 3-9) and 20 rows of data points.

TABLE 20 VALUE ADDED

Table with 13 columns (YEAR 83-88, ISIC 3-9) and 20 rows of data points.

TABLE 21 GROSS FIXED CAPITAL FORMATION

Table with 13 columns (YEAR 83-88, ISIC 3-9) and 20 rows of data points.

TABLE 51 PRODUCTION INDEXES

Table with 13 columns (YEAR 83-88, ISIC 3-9) and 20 rows of data points.

TOTALS

Summary table with 13 columns (YEAR 83-88, ISIC 3-9) and 5 rows of data points.

TABLE 04 EMPLOYMENT

Table with columns for YEAR (3-8) and ISIC (1-2) and rows for years 1973-1990. Data is represented by asterisks.

TABLE 20 VALUE ADDED

Table with columns for YEAR (3-8) and ISIC (1-2) and rows for years 1973-1990. Data is represented by asterisks.

TABLE 05 WAGES AND SALARIES

Table with columns for YEAR (3-8) and ISIC (1-2) and rows for years 1973-1990. Data is represented by asterisks.

TABLE 21 GROSS FIXED CAPITAL FORMATION

Table with columns for YEAR (3-8) and ISIC (1-2) and rows for years 1973-1990. Data is represented by asterisks.

TABLE 14 GROSS OUTPUT

Table with columns for YEAR (3-8) and ISIC (1-2) and rows for years 1973-1990. Data is represented by asterisks.

TABLE 51 PRODUCTION INDEXES

Table with columns for YEAR (3-8) and ISIC (1-2) and rows for years 1973-1990. Data is represented by asterisks.

TOTALS

Summary table with columns for YEAR (3-8) and ISIC (1-2) and rows for tables 04, 05, 14, 20, 21, 51. Data is represented by asterisks.

TABLE 04 EMPLOYMENT

Table with columns for YEAR ISIC (3-90) and 18 data columns (6-8). Rows list ISIC codes from 311/2 to 390.

TABLE 05 WAGES AND SALARIES

Table with columns for YEAR ISIC (3-90) and 18 data columns (6-8). Rows list ISIC codes from 311/2 to 390.

TABLE 14 GROSS OUTPUT

Table with columns for YEAR ISIC (3-90) and 18 data columns (6-8). Rows list ISIC codes from 311/2 to 390.

TABLE 20 VALUE ADDED

Table with columns for YEAR ISIC (3-90) and 18 data columns (6-8). Rows list ISIC codes from 311/2 to 390.

TABLE 21 GROSS FIXED CAPITAL FORMATION

Table with columns for YEAR ISIC (3-90) and 18 data columns (6-8). Rows list ISIC codes from 311/2 to 390.

TABLE 51 PRODUCTION INDEXES

Table with columns for YEAR ISIC (3-90) and 18 data columns (6-8). Rows list ISIC codes from 311/2 to 390.

TOTALS

Summary table with columns for TABLE F and YEAR (3-90) and 18 data columns (6-8). Rows list table numbers 04, 05, 14, 20, 21, 51.

TABLE 04 EMPLOYMENT

Table with 18 columns (YEAR, ISIC) and 20 rows of data for Employment.

TABLE 05 WAGES AND SALARIES

Table with 18 columns (YEAR, ISIC) and 20 rows of data for Wages and Salaries.

TABLE 14 GROSS OUTPUT

Table with 18 columns (YEAR, ISIC) and 20 rows of data for Gross Output.

TABLE 20 VALUE ADDED

Table with 18 columns (YEAR, ISIC) and 20 rows of data for Value Added.

TABLE 21 GROSS FIXED CAPITAL FORMATION

Table with 18 columns (YEAR, ISIC) and 20 rows of data for Gross Fixed Capital Formation.

TABLE 51 PRODUCTION INDEXES

Table with 18 columns (YEAR, ISIC) and 20 rows of data for Production Indexes.

TOTALS

Summary table with 18 columns (YEAR, ISIC) and 5 rows of data for Totals.

TABLE 04 EMPLOYMENT

Table with columns for YEAR (3, 4, 5, 6, 7, 8, 9, 0, 1, 2, 3, 4, 5, 6, 7, 8, 9, 0, 1, 2) and ISIC (311/2, 313, 314, 321, 322, 323, 324, 331, 332, 341, 342, 351, 352, 353, 354, 355, 356, 361, 362, 369, 371, 372, 381, 382, 383, 384, 385, 390). Data points are mostly dots or dashes.

TABLE 05 WAGES AND SALARIES

Table with columns for YEAR (3, 4, 5, 6, 7, 8, 9, 0, 1, 2, 3, 4, 5, 6, 7, 8, 9, 0, 1, 2) and ISIC (311/2, 313, 314, 321, 322, 323, 324, 331, 332, 341, 342, 351, 352, 353, 354, 355, 356, 361, 362, 369, 371, 372, 381, 382, 383, 384, 385, 390). Data points are mostly dots or dashes.

TABLE 14 GROSS OUTPUT

Table with columns for YEAR (3, 4, 5, 6, 7, 8, 9, 0, 1, 2, 3, 4, 5, 6, 7, 8, 9, 0, 1, 2) and ISIC (311/2, 313, 314, 321, 322, 323, 324, 331, 332, 341, 342, 351, 352, 353, 354, 355, 356, 361, 362, 369, 371, 372, 381, 382, 383, 384, 385, 390). Data points are mostly dots or dashes.

TABLE 20 VALUE ADDED

Table with columns for YEAR (3, 4, 5, 6, 7, 8, 9, 0, 1, 2, 3, 4, 5, 6, 7, 8, 9, 0, 1, 2) and ISIC (311/2, 313, 314, 321, 322, 323, 324, 331, 332, 341, 342, 351, 352, 353, 354, 355, 356, 361, 362, 369, 371, 372, 381, 382, 383, 384, 385, 390). Data points are mostly dots or dashes.

TABLE 21 GROSS FIXED CAPITAL FORMATION

Table with columns for YEAR (3, 4, 5, 6, 7, 8, 9, 0, 1, 2, 3, 4, 5, 6, 7, 8, 9, 0, 1, 2) and ISIC (311/2, 313, 314, 321, 322, 323, 324, 331, 332, 341, 342, 351, 352, 353, 354, 355, 356, 361, 362, 369, 371, 372, 381, 382, 383, 384, 385, 390). Data points are mostly dots or dashes.

TABLE 51 PRODUCTION INDEXES

Table with columns for YEAR (3, 4, 5, 6, 7, 8, 9, 0, 1, 2, 3, 4, 5, 6, 7, 8, 9, 0, 1, 2) and ISIC (311/2, 313, 314, 321, 322, 323, 324, 331, 332, 341, 342, 351, 352, 353, 354, 355, 356, 361, 362, 369, 371, 372, 381, 382, 383, 384, 385, 390). Data points are mostly dots or dashes.

TOTALS

Summary table with columns for YEAR (3, 4, 5, 6, 7, 8, 9, 0, 1, 2, 3, 4, 5, 6, 7, 8, 9, 0, 1, 2) and rows for TABLE (04, 05, 14, 20, 21, 51). Values range from 13 to 28.

TABLE 04 EMPLOYMENT

Table with 17 columns (YEAR, ISIC 3-8) and 19 rows (311/2 to 390). All cells contain dots.

TABLE 20 VALUE ADDED

Table with 17 columns (YEAR, ISIC 3-8) and 19 rows (311/2 to 390). All cells contain dots.

TABLE 05 WAGES AND SALARIES

Table with 17 columns (YEAR, ISIC 3-8) and 19 rows (311/2 to 390). All cells contain dots.

TABLE 21 GROSS FIXED CAPITAL FORMATION

Table with 17 columns (YEAR, ISIC 3-8) and 19 rows (311/2 to 390). All cells contain dots.

TABLE 14 GROSS OUTPUT

Table with 17 columns (YEAR, ISIC 3-8) and 19 rows (311/2 to 390). All cells contain dots.

TABLE 51 PRODUCTION INDEXES

Table with 17 columns (YEAR, ISIC 3-8) and 19 rows (311/2 to 390). All cells contain dots.

TOTALS

Summary table with 17 columns (YEAR, ISIC 3-8) and 6 rows (04, 05, 14, 20, 21, 51) showing numerical values.

TABLE 04 EMPLOYMENT

Table with 13 columns (YEAR 63-88) and 20 rows (ISIC 311/2-390). All cells contain asterisks.

TABLE 05 WAGES AND SALARIES

Table with 13 columns (YEAR 63-88) and 20 rows (ISIC 311/2-390). All cells contain asterisks.

TABLE 14 GROSS OUTPUT

Table with 13 columns (YEAR 63-88) and 20 rows (ISIC 311/2-390). All cells contain asterisks.

TABLE 20 VALUE ADDED

Table with 13 columns (YEAR 63-88) and 20 rows (ISIC 311/2-390). All cells contain asterisks.

TABLE 21 GROSS FIXED CAPITAL FORMATION

Table with 13 columns (YEAR 63-88) and 20 rows (ISIC 311/2-390). Contains asterisks and some 'C' characters.

TABLE 51 PRODUCTION INDEXES

Table with 13 columns (YEAR 63-88) and 20 rows (ISIC 311/2-390). All cells contain asterisks.

TOTALS

Summary table with 13 columns (YEAR 63-88) and 5 rows (TABLE 04, 05, 14, 20, 51). Values are mostly 28.

TABLE 04 EMPLOYMENT

Table with 17 columns (YEAR 63-88) and 20 rows (ISIC 311/2-390). All cells contain dots.

TABLE 05 WAGES AND SALARIES

Table with 17 columns (YEAR 63-88) and 20 rows (ISIC 311/2-390). All cells contain dots.

TABLE 14 GROSS OUTPUT

Table with 17 columns (YEAR 63-88) and 20 rows (ISIC 311/2-390). All cells contain dots.

TABLE 20 VALUE ADDED

Table with 17 columns (YEAR 63-88) and 20 rows (ISIC 311/2-390). All cells contain dots.

TABLE 21 GROSS FIXED CAPITAL FORMATION

Table with 17 columns (YEAR 63-88) and 20 rows (ISIC 311/2-390). All cells contain dots.

TABLE 51 PRODUCTION INDEXES

Table with 17 columns (YEAR 63-88) and 20 rows (ISIC 311/2-390). All cells contain dots.

TOTALS

Summary table with 17 columns (YEAR 63-88) and 5 rows (TABLE 04, 05, 14, 20, 21). Values range from 17 to 28.

TABLE 04 EMPLOYMENT

Table with 17 columns (YEAR, ISIC, 3-12) and 20 rows (311/2 to 390). Data points are mostly dots.

TABLE 05 WAGES AND SALARIES

Table with 17 columns (YEAR, ISIC, 3-12) and 20 rows (311/2 to 390). Data points are mostly dots.

TABLE 14 GROSS OUTPUT

Table with 17 columns (YEAR, ISIC, 3-12) and 20 rows (311/2 to 390). Data points are mostly dots.

TABLE 20 VALUE ADDED

Table with 17 columns (YEAR, ISIC, 3-12) and 20 rows (311/2 to 390). Data points are mostly dots.

TABLE 21 GROSS FIXED CAPITAL FORMATION

Table with 17 columns (YEAR, ISIC, 3-12) and 20 rows (311/2 to 390). Data points are mostly dots.

TABLE 51 PRODUCTION INDEXES

Table with 17 columns (YEAR, ISIC, 3-12) and 20 rows (311/2 to 390). Data points are mostly dots.

TOTALS

Summary table with 17 columns (YEAR, ISIC, 3-12) and 5 rows (04, 05, 20, 21, 51). Contains numerical values like 28, 26, 27, 25, 23.

TABLE 04 EMPLOYMENT

Table with 18 columns (YEAR, ISIC 3-8) and 20 rows (311/2 to 390). Data points are represented by asterisks.

TABLE 05 WAGES AND SALARIES

Table with 18 columns (YEAR, ISIC 3-8) and 20 rows (311/2 to 390). Data points are represented by asterisks.

TABLE 14 GROSS OUTPUT

Table with 18 columns (YEAR, ISIC 3-8) and 20 rows (311/2 to 390). Data points are represented by asterisks.

TABLE 20 VALUE ADDED

Table with 18 columns (YEAR, ISIC 3-8) and 20 rows (311/2 to 390). Data points are represented by asterisks.

TABLE 21 GROSS FIXED CAPITAL FORMATION

Table with 18 columns (YEAR, ISIC 3-8) and 20 rows (311/2 to 390). Data points are represented by asterisks.

TABLE 51 PRODUCTION INDEXES

Table with 18 columns (YEAR, ISIC 3-8) and 20 rows (311/2 to 390). Data points are represented by asterisks.

TOTALS

Summary table with 18 columns (YEAR, ISIC 3-8) and 5 rows (04, 05, 14, 20, 21). Data points are numerical values.

TABLE 04 EMPLOYMENT

Table with columns YEAR, ISIC and 18 data columns (3-20) showing employment data for various ISIC codes from 1983 to 1990.

TABLE 05 WAGES AND SALARIES

Table with columns YEAR, ISIC and 18 data columns (3-20) showing wages and salaries data for various ISIC codes from 1983 to 1990.

TABLE 14 GROSS OUTPUT

Table with columns YEAR, ISIC and 18 data columns (3-20) showing gross output data for various ISIC codes from 1983 to 1990.

TABLE 20 VALUE ADDED

Table with columns YEAR, ISIC and 18 data columns (3-20) showing value added data for various ISIC codes from 1983 to 1990.

TABLE 21 GROSS FIXED CAPITAL FORMATION

Table with columns YEAR, ISIC and 18 data columns (3-20) showing gross fixed capital formation data for various ISIC codes from 1983 to 1990.

TABLE 51 PRODUCTION INDEXES

Table with columns YEAR, ISIC and 18 data columns (3-20) showing production indexes data for various ISIC codes from 1983 to 1990.

TOTALS

Summary table with columns YEAR, TABLE and 18 data columns (3-20) showing totals for various years and tables.

TABLE 04 EMPLOYMENT

Table with columns for YEAR/ISIC (3-8) and rows for years 11/2 to 90. Data points are represented by asterisks.

TABLE 05 WAGES AND SALARIES

Table with columns for YEAR/ISIC (3-8) and rows for years 11/2 to 90. Data points are represented by asterisks.

TABLE 14 GROSS OUTPUT

Table with columns for YEAR/ISIC (3-8) and rows for years 11/2 to 90. Data points are represented by asterisks.

TABLE 20 VALUE ADDED

Table with columns for YEAR/ISIC (3-8) and rows for years 11/2 to 90. Data points are represented by asterisks.

TABLE 21 GROSS FIXED CAPITAL FORMATION

Table with columns for YEAR/ISIC (3-8) and rows for years 11/2 to 90. Data points are represented by asterisks.

TABLE 51 PRODUCTION INDEXES

Table with columns for YEAR/ISIC (3-8) and rows for years 11/2 to 90. Data points are represented by asterisks.

TOTALS

Summary table with columns for TABLE (04, 05, 14, 20, 21, 51) and rows for years 3, 4, 5, 6, 7, 8, 9, 0, 1, 2, 3, 4, 5, 6, 7, 8, 9, 0, 1, 2. Data points are represented by asterisks.

TABLE 04 EMPLOYMENT

Table with columns YEAR ISIC (63-88) and 15 data columns representing employment values for each year.

TABLE 05 WAGES AND SALARIES

Table with columns YEAR ISIC (63-88) and 15 data columns representing wages and salaries values for each year.

TABLE 14 GROSS OUTPUT

Table with columns YEAR ISIC (63-88) and 15 data columns representing gross output values for each year.

TABLE 20 VALUE ADDED

Table with columns YEAR ISIC (63-88) and 15 data columns representing value added values for each year.

TABLE 21 GROSS FIXED CAPITAL FORMATION

Table with columns YEAR ISIC (63-88) and 15 data columns representing gross fixed capital formation values for each year.

TABLE 51 PRODUCTION INDEXES

Table with columns YEAR ISIC (63-88) and 15 data columns representing production indexes values for each year.

TOTALS

Summary table showing totals for each table (04, 05, 14, 20, 21, 51) across years 63-88.

TABLE 04 EMPLOYMENT

Table with columns YEAR, ISIC, and 18 data columns (63-88). Rows include years 11/2 to 90 and ISIC codes 3, 4, 5, 6, 7, 8, 9, 0, 1, 2, 3, 4, 5, 6, 7, 8, 9, 0, 1, 2.

TABLE 05 WAGES AND SALARIES

Table with columns YEAR, ISIC, and 18 data columns (63-88). Rows include years 11/2 to 90 and ISIC codes 3, 4, 5, 6, 7, 8, 9, 0, 1, 2, 3, 4, 5, 6, 7, 8, 9, 0, 1, 2.

TABLE 14 GROSS OUTPUT

Table with columns YEAR, ISIC, and 18 data columns (63-88). Rows include years 11/2 to 90 and ISIC codes 3, 4, 5, 6, 7, 8, 9, 0, 1, 2, 3, 4, 5, 6, 7, 8, 9, 0, 1, 2.

TABLE 20 VALUE ADDED

Table with columns YEAR, ISIC, and 18 data columns (63-88). Rows include years 11/2 to 90 and ISIC codes 3, 4, 5, 6, 7, 8, 9, 0, 1, 2, 3, 4, 5, 6, 7, 8, 9, 0, 1, 2.

TABLE 21 GROSS FIXED CAPITAL FORMATION

Table with columns YEAR, ISIC, and 18 data columns (63-88). Rows include years 11/2 to 90 and ISIC codes 3, 4, 5, 6, 7, 8, 9, 0, 1, 2, 3, 4, 5, 6, 7, 8, 9, 0, 1, 2.

TABLE 51 PRODUCTION INDEXES

Table with columns YEAR, ISIC, and 18 data columns (63-88). Rows include years 11/2 to 90 and ISIC codes 3, 4, 5, 6, 7, 8, 9, 0, 1, 2, 3, 4, 5, 6, 7, 8, 9, 0, 1, 2.

TOTALS

Summary table with columns TABLE, YEAR, and 18 data columns (63-88). Rows include tables 04, 05, 14, 20, 21, and 51.

TABLE 04 EMPLOYMENT

Table with columns YEAR ISIC and 24 data columns. Rows include years 1970-1985 and ISIC codes 3-90.

TABLE 05 WAGES AND SALARIES

Table with columns YEAR ISIC and 24 data columns. Rows include years 1970-1985 and ISIC codes 3-90.

TABLE 14 GROSS OUTPUT

Table with columns YEAR ISIC and 24 data columns. Rows include years 1970-1985 and ISIC codes 3-90.

TABLE 20 VALUE ADDED

Table with columns YEAR ISIC and 24 data columns. Rows include years 1970-1985 and ISIC codes 3-90.

TABLE 21 GROSS FIXED CAPITAL FORMATION

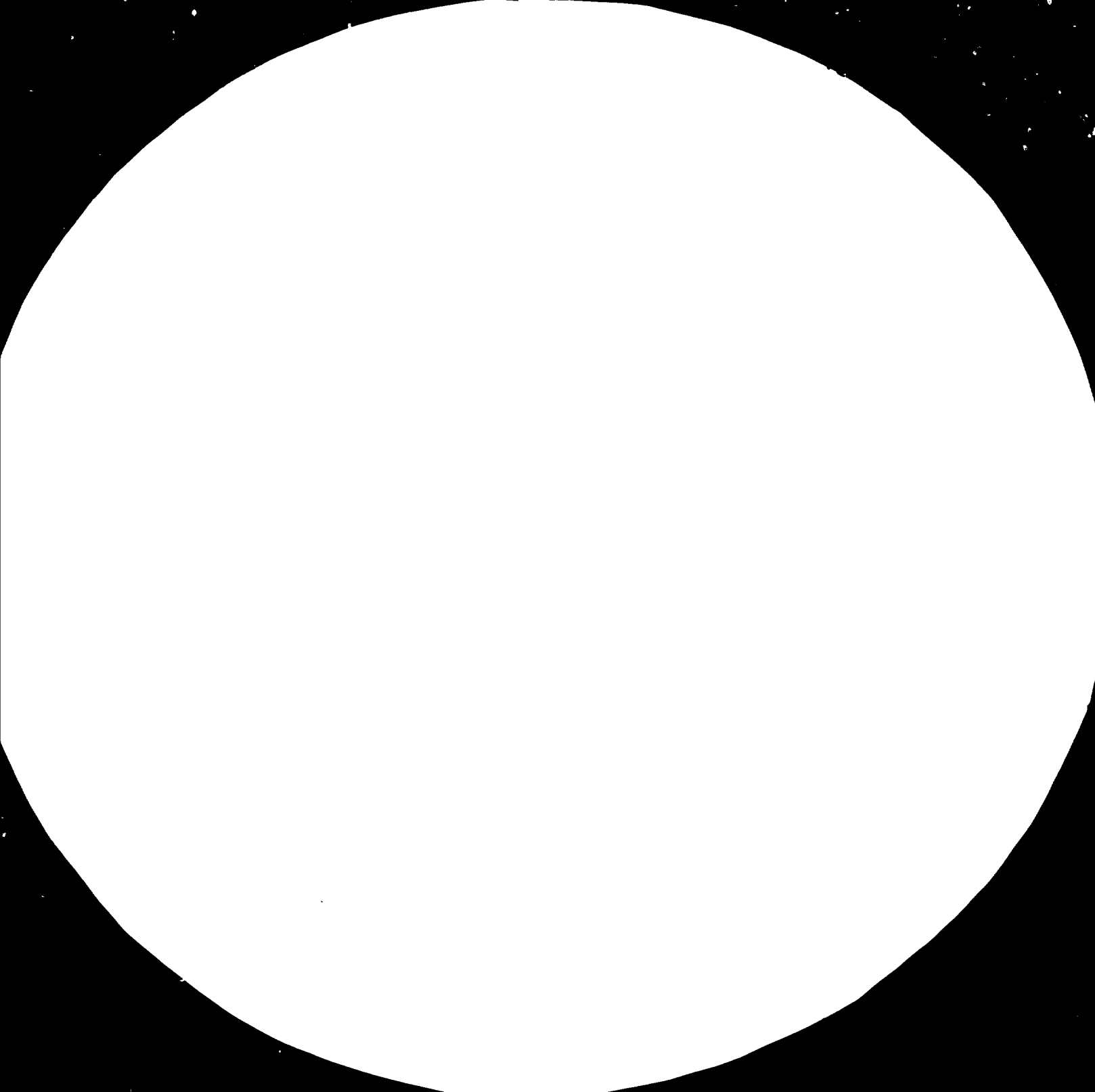
Table with columns YEAR ISIC and 24 data columns. Rows include years 1970-1985 and ISIC codes 3-90.

TABLE 51 PRODUCTION INDEXES

Table with columns YEAR ISIC and 24 data columns. Rows include years 1970-1985 and ISIC codes 3-90.

TOTALS

Summary table with columns TABLE, YEAR ISIC, and 24 data columns. Rows include tables 04, 05, 14, 20, 21, and 51.





1.8

2.0

2.2



MICROCOPY RESOLUTION TEST CHART

NATIONAL BUREAU OF STANDARDS

STANDARD REFERENCE MATERIAL NUMBER

APPLICATION TEST CHART NO. 2

DATA AVAILABLE FOR (444) MEXICO

TABLE 04 EMPLOYMENT		TABLE 05 WAGES AND SALARIES		TABLE 14 GROSS OUTPUT	
YEAR	ISIC	YEAR	ISIC	YEAR	ISIC
1972	311/2	1972	311/2	1972	311/2
1973	313	1973	313	1973	313
1974	314	1974	314	1974	314
1975	321	1975	321	1975	321
1976	322	1976	322	1976	322
1977	323	1977	323	1977	323
1978	324	1978	324	1978	324
1979	332	1979	332	1979	332
1980	341	1980	341	1980	341
1981	351	1981	351	1981	351
1982	352	1982	352	1982	352
1983	353	1983	353	1983	353
1984	354	1984	354	1984	354
1985	355	1985	355	1985	355
1986	356	1986	356	1986	356
1987	361	1987	361	1987	361
1988	369	1988	369	1988	369
1989	371	1989	371	1989	371
1990	372	1990	372	1990	372
1991	382	1991	382	1991	382
1992	383	1992	383	1992	383
1993	384	1993	384	1993	384
1994	385	1994	385	1994	385
1995	390	1995	390	1995	390

TABLE 20 VALUE ADDED		TABLE 21 GROSS FIXED CAPITAL FORMATION		TABLE 51 PRODUCTION INDEXES	
YEAR	ISIC	YEAR	ISIC	YEAR	ISIC
1972	311/2	1972	311/2	1972	311/2
1973	313	1973	313	1973	313
1974	314	1974	314	1974	314
1975	321	1975	321	1975	321
1976	322	1976	322	1976	322
1977	323	1977	323	1977	323
1978	324	1978	324	1978	324
1979	332	1979	332	1979	332
1980	341	1980	341	1980	341
1981	351	1981	351	1981	351
1982	352	1982	352	1982	352
1983	353	1983	353	1983	353
1984	354	1984	354	1984	354
1985	355	1985	355	1985	355
1986	356	1986	356	1986	356
1987	361	1987	361	1987	361
1988	369	1988	369	1988	369
1989	371	1989	371	1989	371
1990	372	1990	372	1990	372
1991	382	1991	382	1991	382
1992	383	1992	383	1992	383
1993	384	1993	384	1993	384
1994	385	1994	385	1994	385
1995	390	1995	390	1995	390

TOTALS

YEAR	04	05	20	21	51
1972	9	9	9	9	9
1973	4	4	4	4	4
1974	4	4	4	4	4
1975	4	4	4	4	4
1976	4	4	4	4	4
1977	4	4	4	4	4
1978	4	4	4	4	4
1979	14	14	14	14	14
1980	26	26	26	26	26
1981	26	26	26	26	26
1982	26	26	26	26	26
1983	26	26	26	26	26
1984	26	26	26	26	26
1985	26	26	26	26	26
1986	26	26	26	26	26
1987	26	26	26	26	26
1988	26	26	26	26	26
1989	26	26	26	26	26
1990	26	26	26	26	26
1991	26	26	26	26	26
1992	26	26	26	26	26
1993	26	26	26	26	26
1994	26	26	26	26	26
1995	26	26	26	26	26

TABLE 04 EMPLOYMENT

Table with 16 columns (YEAR, ISIC) and 16 rows (311/2 to 390). All cells contain dots.

TABLE 05 WAGES AND SALARIES

Table with 16 columns (YEAR, ISIC) and 16 rows (311/2 to 390). All cells contain dots.

TABLE 14 GROSS OUTPUT

Table with 16 columns (YEAR, ISIC) and 16 rows (311/2 to 390). All cells contain dots.

TABLE 20 VALUE ADDED

Table with 16 columns (YEAR, ISIC) and 16 rows (311/2 to 390). All cells contain dots.

TABLE 21 GROSS FIXED CAPITAL FORMATION

Table with 16 columns (YEAR, ISIC) and 16 rows (311/2 to 390). All cells contain dots.

TABLE 51 PRODUCTION INDEXES

Table with 16 columns (YEAR, ISIC) and 16 rows (311/2 to 390). All cells contain dots.

TOTALS

Summary table with 16 columns (YEAR, ISIC) and 16 rows (04, 05, 20, 21, 51). Contains numerical values.

UQDAD05

UNIDO DATA BASE (STAGE 4)

DATA AVAILABLE FOR (532) Netherlands Antilles

DATE 850418

TABLE 04 EMPLOYMENT

TABLE 05 WAGES AND SALARIES

TABLE 14 GROSS OUTPUT

YEAR	6	6	6	6	6	7	7	7	7	7	7	7	7	7	7	8	8	8		
ISIC	3	4	5	6	7	8	9	0	1	2	3	4	5	6	7	8	9	0	1	2
311/2																				
313																				
314																				
321																				
322																				
323																				
324																				
331																				
332																				
341																				
342																				
351																				
352																				
353																				
354																				
355																				
356																				
361																				
362																				
369																				
371																				
372																				
381																				
382																				
383																				
384																				
385																				
390																				

YEAR	6	6	6	6	6	7	7	7	7	7	7	7	7	7	7	8	8	8		
ISIC	3	4	5	6	7	8	9	0	1	2	3	4	5	6	7	8	9	0	1	2
311/2																				
313																				
314																				
321																				
322																				
323																				
324																				
331																				
332																				
341																				
342																				
351																				
352																				
353																				
354																				
355																				
356																				
361																				
362																				
369																				
371																				
372																				
381																				
382																				
383																				
384																				
385																				
390																				

YEAR	6	6	6	6	6	7	7	7	7	7	7	7	7	7	7	7	7	7	7	7	8	8	8							
ISIC	3	4	5	6	7	8	9	0	1	2	3	4	5	6	7	8	9	0	1	2	3	4	5	6	7	8	9	0	1	2
311/2																														
313																														
314																														
321																														
322																														
323																														
324																														
331																														
332																														
341																														
342																														
351																														
352																														
353																														
354																														
355																														
356																														
361																														
362																														
369																														
371																														
372																														
381																														
382																														
383																														
384																														
385																														
390																														

TABLE 20 VALUE ADDED

TABLE 21 GROSS FIXED CAPITAL FORMATION

TABLE 51 PRODUCTION INDEXES

YEAR	6	6	6	6	6	7	7	7	7	7	7	7	7	7	7	8	8	8		
ISIC	3	4	5	6	7	8	9	0	1	2	3	4	5	6	7	8	9	0	1	2
311/2																				
313																				
314																				
321																				
322																				
323																				
324																				
331																				
332																				
341																				
342																				
351																				
352																				
353																				
354																				
355																				
356																				
361																				
362																				
369																				
371																				
372																				
381																				
382																				
383																				
384																				
385																				
390																				

YEAR	6	6	6	6	6	7	7	7	7	7	7	7	7	7	7	8	8	8		
ISIC	3	4	5	6	7	8	9	0	1	2	3	4	5	6	7	8	9	0	1	2
311/2																				
313																				
314																				
321																				
322																				
323																				
324																				
331																				
332																				
341																				
342																				
351																				
352																				
353																				
354																				
355																				
356																				
361																				
362																				
369																				
371																				
372																				
381																				
382																				
383																				
384																				
385																				
390																				

YEAR	6	6	6	6	6	7	7	7	7	7	7	7	7	7	7	7	7	7	7	7	8	8	8							
ISIC	3	4	5	6	7	8	9	0	1	2	3	4	5	6	7	8	9	0	1	2	3	4	5	6	7	8	9	0	1	2
311/2																														
313																														
314																														
321																														
322																														
323																														
324																														
331																														
332																														
341																														
342																														
351																														
352																														
353																														
354																														
355																														
356																														
361																														
362																														
369																														
371																														
372																														
381																														
382																														
383																														
384																														
385																														
390																														

TOTALS

YEAR	6	6	6	6	6	6	7	7	7	7	7	7	7	7	7	8	8	8		
TABLE	3	4	5	6	7	8	9	0	1	2	3	4	5	6	7	8	9	0	1	2
04																				
05																				
14																				
20																				
21																				
51																				

TABLE 04 EMPLOYMENT

Table with columns YEAR, ISIC, and 18 data columns (6-8, 6-8, 7-7, 7-7, 7-7, 7-7, 7-7, 7-7, 7-7, 7-7, 7-7, 7-7, 7-7, 7-7, 7-7, 7-7, 7-7, 7-7). Rows include years 311-390.

TABLE 05 WAGES AND SALARIES

Table with columns YEAR, ISIC, and 18 data columns (6-8, 6-8, 6-8, 6-8, 6-8, 6-8, 6-8, 6-8, 6-8, 6-8, 6-8, 6-8, 6-8, 6-8, 6-8, 6-8, 6-8, 6-8). Rows include years 311/2-390.

TABLE 14 GROSS OUTPUT

Table with columns YEAR, ISIC, and 18 data columns (6-8, 6-8, 6-8, 6-8, 6-8, 6-8, 6-8, 6-8, 6-8, 6-8, 6-8, 6-8, 6-8, 6-8, 6-8, 6-8, 6-8, 6-8). Rows include years 311/2-390.

TABLE 20 VALUE ADDED

Table with columns YEAR, ISIC, and 18 data columns (6-8, 6-8, 6-8, 6-8, 6-8, 6-8, 6-8, 6-8, 6-8, 6-8, 6-8, 6-8, 6-8, 6-8, 6-8, 6-8, 6-8, 6-8). Rows include years 311/2-390.

TABLE 21 GROSS FIXED CAPITAL FORMATION

Table with columns YEAR, ISIC, and 18 data columns (6-8, 6-8, 6-8, 6-8, 6-8, 6-8, 6-8, 6-8, 6-8, 6-8, 6-8, 6-8, 6-8, 6-8, 6-8, 6-8, 6-8, 6-8). Rows include years 311/2-390.

TABLE 51 PRODUCTION INDEXES

Table with columns YEAR, ISIC, and 18 data columns (6-8, 6-8, 6-8, 6-8, 6-8, 6-8, 6-8, 6-8, 6-8, 6-8, 6-8, 6-8, 6-8, 6-8, 6-8, 6-8, 6-8, 6-8). Rows include years 311/2-390.

TOTALS

Summary table with columns TABLE, YEAR, and 18 data columns (6-8, 6-8, 6-8, 6-8, 6-8, 6-8, 6-8, 6-8, 6-8, 6-8, 6-8, 6-8, 6-8, 6-8, 6-8, 6-8, 6-8, 6-8). Rows include tables 04, 05, 14, 20, 21, 51.

YEAR	TABLE 04 EMPLOYMENT			TABLE 05 WAGES AND SALARIES			TABLE 14 GROSS OUTPUT		
	6 8 8	6 8 7	6 8 6	6 8 8	6 8 7	6 8 6	6 8 8	6 8 7	6 8 6
ISIC	3 4 5	6 7 8	9 0 1 2	3 4 5	6 7 8	9 0 1 2	3 4 5	6 7 8	9 0 1 2
311/2
313
314
321
322
323
324
331
332
341
351
352
353
354
355
356
362
371
372
381
382
383
384
385
390

YEAR	TABLE 20 VALUE ADDED			TABLE 21 GROSS FIXED CAPITAL FORMATION			TABLE 51 PRODUCTION INDICES		
	6 8 8	6 8 7	6 8 6	6 8 8	6 8 7	6 8 6	6 8 8	6 8 7	6 8 6
ISIC	3 4 5	6 7 8	9 0 1 2	3 4 5	6 7 8	9 0 1 2	3 4 5	6 7 8	9 0 1 2
311/2
313
314
321
322
323
324
331
332
341
351
352
353
354
355
356
361
362
371
372
381
382
383
384
385
390

TOTALS

YEAR	TOTALS		
	6 8 8	6 8 7	6 8 6
ISIC	3 4 5	6 7 8	9 0 1 2
04
05
20
51

UNIDC: DATA BASE (STAGE 4)

TABLE 04 EMPLOYMENT

YEAR	TABLE 04 EMPLOYMENT										TABLE 05 WAGES AND SALARIES										TABLE 14 GROSS OUTPUT									
	6	6	6	6	7	7	7	7	7	7	6	6	6	6	7	7	7	7	7	7	6	6	6	6	7	7	7	7	7	7
1980	3	4	5	6	7	8	9	0	1	2	3	4	5	6	7	8	9	0	1	2	3	4	5	6	7	8	9	0	1	2
1981	3	1	1	3	3	4	5	6	7	7	3	1	1	3	3	4	5	6	7	7	3	1	1	3	3	4	5	6	7	7
1982	3	2	2	3	3	4	5	6	7	7	3	2	2	3	3	4	5	6	7	7	3	2	2	3	3	4	5	6	7	7
1983	3	2	2	3	3	4	5	6	7	7	3	2	2	3	3	4	5	6	7	7	3	2	2	3	3	4	5	6	7	7
1984	3	3	3	3	3	4	5	6	7	7	3	3	3	3	3	4	5	6	7	7	3	3	3	3	3	4	5	6	7	7
1985	3	4	4	4	4	5	6	7	7	7	3	4	4	4	4	5	6	7	7	7	3	4	4	4	4	5	6	7	7	7
1986	3	4	5	6	7	7	7	7	7	7	3	4	5	6	7	7	7	7	7	7	3	4	5	6	7	7	7	7	7	7
1987	3	4	5	6	7	7	7	7	7	7	3	4	5	6	7	7	7	7	7	7	3	4	5	6	7	7	7	7	7	7
1988	3	4	5	6	7	7	7	7	7	7	3	4	5	6	7	7	7	7	7	7	3	4	5	6	7	7	7	7	7	7
1989	3	4	5	6	7	7	7	7	7	7	3	4	5	6	7	7	7	7	7	7	3	4	5	6	7	7	7	7	7	7
1990	3	4	5	6	7	7	7	7	7	7	3	4	5	6	7	7	7	7	7	7	3	4	5	6	7	7	7	7	7	7

TABLE 20 VALUE ADDED

YEAR	TABLE 20 VALUE ADDED										TABLE 21 GROSS FIXED CAPITAL FORMATION										TABLE 51 PRODUCTION INDEXES									
	6	6	6	6	7	7	7	7	7	7	6	6	6	6	7	7	7	7	7	7	6	6	6	6	7	7	7	7	7	7
1980	3	4	5	6	7	8	9	0	1	2	3	4	5	6	7	8	9	0	1	2	3	4	5	6	7	8	9	0	1	2
1981	3	1	1	3	3	4	5	6	7	7	3	1	1	3	3	4	5	6	7	7	3	1	1	3	3	4	5	6	7	7
1982	3	2	2	3	3	4	5	6	7	7	3	2	2	3	3	4	5	6	7	7	3	2	2	3	3	4	5	6	7	7
1983	3	2	2	3	3	4	5	6	7	7	3	2	2	3	3	4	5	6	7	7	3	2	2	3	3	4	5	6	7	7
1984	3	3	3	3	3	4	5	6	7	7	3	3	3	3	3	4	5	6	7	7	3	3	3	3	3	4	5	6	7	7
1985	3	4	4	4	4	5	6	7	7	7	3	4	4	4	4	5	6	7	7	7	3	4	4	4	4	5	6	7	7	7
1986	3	4	5	6	7	7	7	7	7	7	3	4	5	6	7	7	7	7	7	7	3	4	5	6	7	7	7	7	7	7
1987	3	4	5	6	7	7	7	7	7	7	3	4	5	6	7	7	7	7	7	7	3	4	5	6	7	7	7	7	7	7
1988	3	4	5	6	7	7	7	7	7	7	3	4	5	6	7	7	7	7	7	7	3	4	5	6	7	7	7	7	7	7
1989	3	4	5	6	7	7	7	7	7	7	3	4	5	6	7	7	7	7	7	7	3	4	5	6	7	7	7	7	7	7
1990	3	4	5	6	7	7	7	7	7	7	3	4	5	6	7	7	7	7	7	7	3	4	5	6	7	7	7	7	7	7

TOTALS

YEAR	TOTALS										TOTALS										TOTALS									
6	6	6	6	7	7	7	7	7	7	6	6	6	6	7	7	7	7	7	7	6	6	6	6	7	7	7	7	7	7	
1980	3	4	5	6	7	8	9	0	1	2	3	4	5	6	7	8	9	0	1	2	3	4	5	6	7	8	9	0	1	2
1981	3	1	1	3	3	4	5	6	7	7	3	1	1	3	3	4	5	6	7	7	3	1	1	3	3	4	5	6	7	7
1982	3	2	2	3	3	4	5	6	7	7	3	2	2	3	3	4	5	6	7	7	3	2	2	3	3	4	5	6	7	7
1983	3	2	2	3	3	4	5	6	7	7	3	2	2	3	3	4	5	6	7	7	3	2	2	3	3	4	5	6	7	7
1984	3	3	3	3	3	4	5	6	7	7	3	3	3	3	3	4	5	6	7	7	3	3	3	3	3	4	5	6	7	7
1985	3	4	4	4	4	5	6	7	7	7	3	4	4	4	4	5	6	7	7	7	3	4	4	4	4	5	6	7	7	7
1986	3	4	5	6	7	7	7	7	7	7	3	4	5	6	7	7	7	7	7	7	3	4	5	6	7	7	7	7	7	7
1987	3	4	5	6	7	7	7	7	7	7	3	4	5	6	7	7	7	7	7	7	3	4	5	6	7	7	7	7	7	7
1988	3	4	5	6	7	7	7	7	7	7	3	4	5	6	7	7	7	7	7	7	3	4	5	6	7	7	7	7	7	7
1989	3	4	5	6	7	7	7	7	7	7	3	4	5	6	7	7	7	7	7	7	3	4	5	6	7	7	7	7	7	7
1990	3	4	5	6	7	7	7	7	7	7	3	4	5	6	7	7	7	7	7	7	3	4	5	6	7	7	7	7	7	7

TABLE 04 EMPLOYMENT

Table with columns for YEAR and ISIC (3-90) and rows for years 311/2 to 390. Data points are represented by dots.

TABLE 05 WAGES AND SALARIES

Table with columns for YEAR and ISIC (3-90) and rows for years 311/2 to 390. Data points are represented by dots.

TABLE 14 GROSS OUTPUT

Table with columns for YEAR and ISIC (3-90) and rows for years 311/2 to 390. Data points are represented by dots.

TABLE 20 VALUE ADDED

Table with columns for YEAR and ISIC (3-90) and rows for years 311/2 to 390. Data points are represented by dots.

TABLE 21 GROSS FIXED CAPITAL FORMATION

Table with columns for YEAR and ISIC (3-90) and rows for years 311/2 to 390. Data points are represented by dots and 'C' characters.

TABLE 51 PRODUCTION INDEXES

Table with columns for YEAR and ISIC (3-90) and rows for years 311/2 to 390. Data points are represented by dots.

TOTALS

Summary table with columns for TABLE and YEAR (3-90) and rows for tables 04, 05, 14, 20, 21, 51. Values are represented by dots and numbers.

Table with columns for YEAR, ISIC, and 22 numerical columns representing data points for various years (1963-1990).

TABLE 20 VALUE ADDED

Table with columns for YEAR, ISIC, and 22 numerical columns representing data points for various years (1963-1990).

Table with columns for YEAR, ISIC, and 22 numerical columns representing data points for various years (1963-1990).

TABLE 21 GROSS FIXED CAPITAL FORMATION

Table with columns for YEAR, ISIC, and 22 numerical columns representing data points for various years (1963-1990).

TABLE 14 GROSS OUTPUT

Table with columns for YEAR, ISIC, and 22 numerical columns representing data points for various years (1963-1990).

TABLE 51 PRODUCTIVITY INDEXES

Table with columns for YEAR, ISIC, and 22 numerical columns representing data points for various years (1963-1990).

TOTALS

Summary table with columns for TABLE, YEAR, and 22 numerical columns representing totals for various years (1963-1990).

TABLE 04 EMPLOYMENT

Table with columns for YEAR (1963-1988) and ISIC (3, 4, 5, 6, 7, 8, 9, 0, 1, 2, 3, 4, 5, 6, 7, 8, 9, 0, 1, 2). Rows list ISIC codes from J11/2 to J90.

TABLE 05 WAGES AND SALARIES

Table with columns for YEAR (1963-1988) and ISIC (3, 4, 5, 6, 7, 8, 9, 0, 1, 2, 3, 4, 5, 6, 7, 8, 9, 0, 1, 2). Rows list ISIC codes from J11/2 to J90.

TABLE 14 GROSS OUTPUT

Table with columns for YEAR (1963-1988) and ISIC (3, 4, 5, 6, 7, 8, 9, 0, 1, 2, 3, 4, 5, 6, 7, 8, 9, 0, 1, 2). Rows list ISIC codes from J11/2 to J90.

TABLE 20 VALUE ADDED

Table with columns for YEAR (1963-1988) and ISIC (3, 4, 5, 6, 7, 8, 9, 0, 1, 2, 3, 4, 5, 6, 7, 8, 9, 0, 1, 2). Rows list ISIC codes from J11/2 to J90.

TABLE 21 GROSS FIXED CAPITAL FORMATION

Table with columns for YEAR (1963-1988) and ISIC (3, 4, 5, 6, 7, 8, 9, 0, 1, 2, 3, 4, 5, 6, 7, 8, 9, 0, 1, 2). Rows list ISIC codes from J11/2 to J90.

TABLE 51 PRODUCTION INDEXES

Table with columns for YEAR (1963-1988) and ISIC (3, 4, 5, 6, 7, 8, 9, 0, 1, 2, 3, 4, 5, 6, 7, 8, 9, 0, 1, 2). Rows list ISIC codes from J11/2 to J90.

TOTALS

Summary table with columns for YEAR (1963-1988) and rows for TABLES 04, 05, 14, 20, 21, and 51. Values are listed for each table across the years.

TABLE 04 EMPLOYMENT

Table with columns YEAR, ISIC, and 20 data points (years 63-88). Rows include ISIC codes 311/2, 313, 314, 321, 322, 323, 324, 331, 332, 341, 342, 351, 352, 353, 354, 355, 356, 361, 362, 369, 371, 372, 381, 382, 383, 384, 385, 390.

TABLE 05 WAGES AND SALARIES

Table with columns YEAR, ISIC, and 20 data points (years 63-88). Rows include ISIC codes 311/2, 313, 314, 321, 322, 323, 324, 331, 332, 341, 342, 351, 352, 353, 354, 355, 356, 361, 362, 369, 371, 372, 381, 382, 383, 384, 385, 390.

TABLE 14 GROSS OUTPUT

Table with columns YEAR, ISIC, and 20 data points (years 63-88). Rows include ISIC codes 311/2, 313, 314, 321, 322, 323, 324, 331, 332, 341, 342, 351, 352, 353, 354, 355, 356, 361, 362, 369, 371, 372, 381, 382, 383, 384, 385, 390.

TABLE 20 VALUE ADDED

Table with columns YEAR, ISIC, and 20 data points (years 63-88). Rows include ISIC codes 311/2, 313, 314, 321, 322, 323, 324, 331, 332, 341, 342, 351, 352, 353, 354, 355, 356, 361, 362, 369, 371, 372, 381, 382, 383, 384, 385, 390.

TABLE 21 GROSS FIXED CAPITAL FORMATION

Table with columns YEAR, ISIC, and 20 data points (years 63-88). Rows include ISIC codes 311/2, 313, 314, 321, 322, 323, 324, 331, 332, 341, 342, 351, 352, 353, 354, 355, 356, 361, 362, 369, 371, 372, 381, 382, 383, 384, 385, 390.

TABLE 51 PRODUCTION INDEXES

Table with columns YEAR, ISIC, and 20 data points (years 63-88). Rows include ISIC codes 311/2, 313, 314, 321, 322, 323, 324, 331, 332, 341, 342, 351, 352, 353, 354, 355, 356, 361, 362, 369, 371, 372, 381, 382, 383, 384, 385, 390.

TOTALS

Summary table with columns TABLE, YEAR, and 20 data points (years 63-88). Rows include TABLE codes 04, 05, 14, 20, 21, 51.

TABLE 04 EMPLOYMENT

Table with columns for YEAR/ISIC and 16 data points (years 63-88). Rows list ISIC codes from 311/2 to 390.

TABLE 05 WAGES AND SALARIES

Table with columns for YEAR/ISIC and 16 data points (years 63-88). Rows list ISIC codes from 311/2 to 390.

TABLE 14 GROSS OUTPUT

Table with columns for YEAR/ISIC and 16 data points (years 63-88). Rows list ISIC codes from 311/2 to 390.

TABLE 20 VALUE ADDED

Table with columns for YEAR/ISIC and 16 data points (years 63-88). Rows list ISIC codes from 311/2 to 390.

TABLE 21 GROSS FIXED CAPITAL FORMATION

Table with columns for YEAR/ISIC and 16 data points (years 63-88). Rows list ISIC codes from 311/2 to 390.

TABLE 51 PRODUCTION INDEXES

Table with columns for YEAR/ISIC and 16 data points (years 63-88). Rows list ISIC codes from 311/2 to 390.

TOTALS

Summary table with columns for YEAR and 16 data points (years 63-88). Rows show totals for categories 04, 15, 20, 31, and 51.

TABLE 04 EMPLOYMENT

Table with 13 columns (YEAR, ISIC, 1963-1982) and 23 rows (311/2 to 390). Contains employment data for various ISIC codes.

TABLE 20 VALUE ADDED

Table with 13 columns (YEAR, ISIC, 1963-1982) and 23 rows (311/2 to 390). Contains value added data for various ISIC codes.

TABLE 05 WAGES AND SALARIES

Table with 13 columns (YEAR, ISIC, 1963-1982) and 23 rows (311/2 to 390). Contains wages and salaries data for various ISIC codes.

TABLE 21 GROSS FIXED CAPITAL FORMATION

Table with 13 columns (YEAR, ISIC, 1963-1982) and 23 rows (311/2 to 390). Contains gross fixed capital formation data for various ISIC codes.

TABLE 14 GROSS OUTPUT

Table with 13 columns (YEAR, ISIC, 1963-1982) and 23 rows (311/2 to 390). Contains gross output data for various ISIC codes.

TABLE 51 PRODUCTION INDEXES

Table with 13 columns (YEAR, ISIC, 1963-1982) and 23 rows (311/2 to 390). Contains production indexes data for various ISIC codes.

TOTALS

Summary table with 13 columns (YEAR, TABLE, 1963-1982) and 5 rows (04, 05, 14, 20, 51). Shows totals for the five tables above.

TABLE 04 EMPLOYMENT

Table with 13 columns: YEAR, ISIC, and 11 data columns. Rows include years from 311/2 to 390 and ISIC codes from 3 to 90.

TABLE 05 WAGES AND SALARIES

Table with 13 columns: YEAR, ISIC, and 11 data columns. Rows include years from 311/2 to 390 and ISIC codes from 3 to 90.

TABLE 14 GROSS OUTPUT

Table with 13 columns: YEAR, ISIC, and 11 data columns. Rows include years from 311/2 to 390 and ISIC codes from 3 to 90.

TABLE 20 VALUE ADDED

Table with 13 columns: YEAR, ISIC, and 11 data columns. Rows include years from 311/2 to 390 and ISIC codes from 3 to 90.

TABLE 21 GROSS FIXED CAPITAL FORMATION

Table with 13 columns: YEAR, ISIC, and 11 data columns. Rows include years from 311/2 to 390 and ISIC codes from 3 to 90.

TABLE 51 PRODUCTION INDEXES

Table with 13 columns: YEAR, ISIC, and 11 data columns. Rows include years from 311/2 to 390 and ISIC codes from 3 to 90.

TOTALS

Summary table with 13 columns: TABLE, YEAR, and 11 data columns. Rows include tables 04, 05, 14, 20, 21, and 51.

TABLE 04 EMPLOYMENT

YEAR	1965	1966	1967	1968	1969	1970	1971	1972	1973	1974	1975	1976	1977	1978	1979	1980
ISIC	3	4	5	6	7	8	9	0	1	2	3	4	5	6	7	8
11/2	3113	3114	3115	3116	3117	3118	3119	3120	3121	3122	3123	3124	3125	3126	3127	3128
1980	3129	3130	3131	3132	3133	3134	3135	3136	3137	3138	3139	3140	3141	3142	3143	3144

TABLE 05 WAGES AND SALARIES

YEAR	1965	1966	1967	1968	1969	1970	1971	1972	1973	1974	1975	1976	1977	1978	1979	1980
ISIC	3	4	5	6	7	8	9	0	1	2	3	4	5	6	7	8
11/2	3113	3114	3115	3116	3117	3118	3119	3120	3121	3122	3123	3124	3125	3126	3127	3128
1980	3129	3130	3131	3132	3133	3134	3135	3136	3137	3138	3139	3140	3141	3142	3143	3144

TABLE 20 VALUE ADDED

YEAR	1965	1966	1967	1968	1969	1970	1971	1972	1973	1974	1975	1976	1977	1978	1979	1980
ISIC	3	4	5	6	7	8	9	0	1	2	3	4	5	6	7	8
11/2	3113	3114	3115	3116	3117	3118	3119	3120	3121	3122	3123	3124	3125	3126	3127	3128
1980	3129	3130	3131	3132	3133	3134	3135	3136	3137	3138	3139	3140	3141	3142	3143	3144

TABLE 21 GROSS FIXED CAPITAL FORMATION

YEAR	1965	1966	1967	1968	1969	1970	1971	1972	1973	1974	1975	1976	1977	1978	1979	1980
ISIC	3	4	5	6	7	8	9	0	1	2	3	4	5	6	7	8
11/2	3113	3114	3115	3116	3117	3118	3119	3120	3121	3122	3123	3124	3125	3126	3127	3128
1980	3129	3130	3131	3132	3133	3134	3135	3136	3137	3138	3139	3140	3141	3142	3143	3144

TABLE 51 PRODUCTION INDICES

YEAR	1965	1966	1967	1968	1969	1970	1971	1972	1973	1974	1975	1976	1977	1978	1979	1980
ISIC	3	4	5	6	7	8	9	0	1	2	3	4	5	6	7	8
11/2	3113	3114	3115	3116	3117	3118	3119	3120	3121	3122	3123	3124	3125	3126	3127	3128
1980	3129	3130	3131	3132	3133	3134	3135	3136	3137	3138	3139	3140	3141	3142	3143	3144

TABLE 14 GROSS OUTPUT

YEAR	1965	1966	1967	1968	1969	1970	1971	1972	1973	1974	1975	1976	1977	1978	1979	1980
ISIC	3	4	5	6	7	8	9	0	1	2	3	4	5	6	7	8
11/2	3113	3114	3115	3116	3117	3118	3119	3120	3121	3122	3123	3124	3125	3126	3127	3128
1980	3129	3130	3131	3132	3133	3134	3135	3136	3137	3138	3139	3140	3141	3142	3143	3144

TOTALS

YEAR	1965	1966	1967	1968	1969	1970	1971	1972	1973	1974	1975	1976	1977	1978	1979	1980
ISIC	3	4	5	6	7	8	9	0	1	2	3	4	5	6	7	8
11/2	3113	3114	3115	3116	3117	3118	3119	3120	3121	3122	3123	3124	3125	3126	3127	3128
1980	3129	3130	3131	3132	3133	3134	3135	3136	3137	3138	3139	3140	3141	3142	3143	3144

TABLE 04 EMPLOYMENT

Table with 17 columns (YEAR, ISIC, 15 ISIC codes) and 17 rows (311/2 to 390). Data is represented by dots.

TABLE 05 WAGES AND SALARIES

Table with 17 columns (YEAR, ISIC, 15 ISIC codes) and 17 rows (311/2 to 390). Data is represented by dots.

TABLE 14 GROSS OUTPUT

Table with 17 columns (YEAR, ISIC, 15 ISIC codes) and 17 rows (311/2 to 390). Data is represented by dots.

TABLE 20 VALUE ADDED

Table with 17 columns (YEAR, ISIC, 15 ISIC codes) and 17 rows (311/2 to 390). Data is represented by dots.

TABLE 21 GROSS FIXED CAPITAL FORMATION

Table with 17 columns (YEAR, ISIC, 15 ISIC codes) and 17 rows (311/2 to 390). Data is represented by dots.

TABLE 51 PRODUCTION INDEXES

Table with 17 columns (YEAR, ISIC, 15 ISIC codes) and 17 rows (311/2 to 390). Data is represented by dots.

TOTALS

Summary table with 17 columns (YEAR, ISIC, 15 ISIC codes) and 17 rows (04 to 51). Data is represented by dots.

TABLE 04 EMPLOYMENT

Table with 13 columns (YEAR 6-8, ISIC 3-8) and 20 rows (311/2 to 390) showing employment data.

TABLE 05 WAGES AND SALARIES

Table with 13 columns (YEAR 6-8, ISIC 3-8) and 20 rows (311/2 to 390) showing wages and salaries data.

TABLE 14 GROSS OUTPUT

Table with 13 columns (YEAR 6-8, ISIC 3-8) and 20 rows (311/2 to 390) showing gross output data.

TABLE 20 VALUE ADDED

Table with 13 columns (YEAR 6-8, ISIC 3-8) and 20 rows (311/2 to 390) showing value added data.

TABLE 21 GROSS FIXED CAPITAL FORMATION

Table with 13 columns (YEAR 6-8, ISIC 3-8) and 20 rows (311/2 to 390) showing gross fixed capital formation data.

TABLE 51 PRODUCTION INDEXES

Table with 13 columns (YEAR 6-8, ISIC 3-8) and 20 rows (311/2 to 390) showing production indexes data.

TOTALS

Summary table with 13 columns (YEAR 6-8, ISIC 3-8) and 6 rows (04 to 51) showing totals for each table.

TABLE 04 EMPLOYMENT

Table with 14 columns (YEAR 83-90) and 14 rows (ISIC 311/2-390). Data points are represented by dots and 'C' characters.

TABLE 20 VALUE ADDED

Table with 14 columns (YEAR 83-90) and 14 rows (ISIC 311/2-390). Data points are represented by dots and 'C' characters.

TABLE 05 WAGES AND SALARIES

Table with 14 columns (YEAR 83-90) and 14 rows (ISIC 311/2-390). Data points are represented by dots and 'C' characters.

TABLE 21 GROSS FIXED CAPITAL FORMATION

Table with 14 columns (YEAR 83-90) and 14 rows (ISIC 311/2-390). Data points are represented by dots and 'C' characters.

TABLE 14 GROSS OUTPUT

Table with 14 columns (YEAR 83-90) and 14 rows (ISIC 311/2-390). Data points are represented by dots and 'C' characters.

TABLE 51 PRODUCTION INDEXES

Table with 14 columns (YEAR 83-90) and 14 rows (ISIC 311/2-390). Data points are represented by dots and 'C' characters.

TOTALS

Summary table with 14 columns (YEAR 83-90) and 5 rows (TABLE 04, 05, 14, 20, 21). Shows numerical totals for each row.

TABLE 04 EMPLOYMENT

Table with 13 columns (YEAR, ISIC, 11 ISIC codes) and 13 rows (ISIC codes 311/2 to 390). Data is represented by dots.

TABLE 20 VALUE ADDED

Table with 13 columns (YEAR, ISIC, 11 ISIC codes) and 13 rows (ISIC codes 311/2 to 390). Data is represented by 'C' characters.

TABLE 05 WAGES AND SALARIES

Table with 13 columns (YEAR, ISIC, 11 ISIC codes) and 13 rows (ISIC codes 311/2 to 390). Data is represented by dots.

TABLE 21 GROSS FIXED CAPITAL FORMATION

Table with 13 columns (YEAR, ISIC, 11 ISIC codes) and 13 rows (ISIC codes 311/2 to 390). Data is represented by dots.

TABLE 14 GROSS OUTPUT

Table with 13 columns (YEAR, ISIC, 11 ISIC codes) and 13 rows (ISIC codes 311/2 to 390). Data is represented by dots.

TABLE 51 PRODUCTION INDEXES

Table with 13 columns (YEAR, ISIC, 11 ISIC codes) and 13 rows (ISIC codes 311/2 to 390). Data is represented by dots.

TOTALS

Summary table with 13 columns (YEAR, ISIC, 11 ISIC codes) and 5 rows (TABLE 04, 05, 14, 20, 21, 51). Values are mostly 28 or 25.

TABLE 04 EMPLOYMENT

Table with columns: YEAR, ISIC, and 20 data columns representing years 63-82. The table contains a grid of data points for various ISIC codes across the years.

TABLE 20 VALUE ADDED

Table with columns: YEAR, ISIC, and 20 data columns representing years 63-82. The table contains a grid of data points for various ISIC codes across the years.

TABLE 05 WAGES AND SALARIES

Table with columns: YEAR, ISIC, and 20 data columns representing years 63-82. The table contains a grid of data points for various ISIC codes across the years.

TABLE 21 GROSS FIXED CAPITAL FORMATION

Table with columns: YEAR, ISIC, and 20 data columns representing years 63-82. The table contains a grid of data points for various ISIC codes across the years.

TABLE 14 GROSS OUTPUT

Table with columns: YEAR, ISIC, and 20 data columns representing years 63-82. The table contains a grid of data points for various ISIC codes across the years.

TABLE 51 PRODUCTION INDEXES

Table with columns: YEAR, ISIC, and 20 data columns representing years 63-82. The table contains a grid of data points for various ISIC codes across the years.

TOTALS

Summary table with columns: TABLE, YEAR, and 20 data columns representing years 63-82. It provides totals for tables 04, 05, 14, 20, and 51.

TABLE 04 EMPLOYMENT

Table with 26 columns: YEAR, ISIC, 3, 4, 5, 6, 7, 8, 9, 0, 1, 2, 3, 4, 5, 6, 7, 7, 7, 7, 7, 7, 7, 7, 8, 8, 8. Rows include ISIC codes 311/2 through 390.

TABLE 05 WAGES AND SALARIES

Table with 26 columns: YEAR, ISIC, 3, 4, 5, 6, 7, 8, 9, 0, 1, 2, 3, 4, 5, 6, 7, 7, 7, 7, 7, 7, 7, 7, 8, 8, 8. Rows include ISIC codes 311/2 through 390.

TABLE 14 GROSS OUTPUT

Table with 26 columns: YEAR, ISIC, 3, 4, 5, 6, 7, 8, 9, 0, 1, 2, 3, 4, 5, 6, 7, 7, 7, 7, 7, 7, 7, 7, 8, 8, 8. Rows include ISIC codes 311/2 through 390.

TABLE 20 VALUE ADDED

Table with 26 columns: YEAR, ISIC, 3, 4, 5, 6, 7, 8, 9, 0, 1, 2, 3, 4, 5, 6, 7, 7, 7, 7, 7, 7, 7, 7, 8, 8, 8. Rows include ISIC codes 311/2 through 390.

TABLE 21 GROSS FIXED CAPITAL FORMATION

Table with 26 columns: YEAR, ISIC, 3, 4, 5, 6, 7, 8, 9, 0, 1, 2, 3, 4, 5, 6, 7, 7, 7, 7, 7, 7, 7, 7, 8, 8, 8. Rows include ISIC codes 311/2 through 390.

TABLE 51 PRODUCTION INDEXES

Table with 26 columns: YEAR, ISIC, 3, 4, 5, 6, 7, 8, 9, 0, 1, 2, 3, 4, 5, 6, 7, 7, 7, 7, 7, 7, 7, 7, 8, 8, 8. Rows include ISIC codes 311/2 through 390.

TOTALS

Summary table with 26 columns: TABLE, YEAR, 3, 4, 5, 6, 7, 8, 9, 0, 1, 2, 3, 4, 5, 6, 7, 7, 7, 7, 7, 7, 7, 7, 8, 8, 8. Rows include table IDs 04, 05, 14, 20, 21, 51.

TABLE 04 EMPLOYMENT

Table with columns YEAR ISIC and rows 1963-1990. Data points are mostly dots, indicating missing or zero values.

TABLE 05 WAGES AND SALARIES

Table with columns YEAR ISIC and rows 1963-1990. Data points are mostly dots, indicating missing or zero values.

TABLE 14 GROSS OUTPUT

Table with columns YEAR ISIC and rows 1963-1990. Data points are mostly dots, indicating missing or zero values.

TABLE 20 VALUE ADDED

Table with columns YEAR ISIC and rows 1963-1990. Data points are mostly dots, indicating missing or zero values.

TABLE 21 GROSS FIXED CAPITAL FORMATION

Table with columns YEAR ISIC and rows 1963-1990. Data points are mostly dots, indicating missing or zero values.

TABLE 51 PRODUCTION INDEXES

Table with columns YEAR ISIC and rows 1963-1990. Data points are mostly dots, indicating missing or zero values.

TOTALS

Summary table with columns TABLE YEAR and rows 04, 05, 14, 20, 21, 51. Contains numerical values for each table and year.

TABLE 04 EMPLOYMENT

Table with 18 columns (YEAR 6-8, 0-2) and 20 rows (311/2 to 390). Contains employment data points.

TABLE 05 WAGES AND SALARIES

Table with 18 columns (YEAR 6-8, 0-2) and 20 rows (311/2 to 390). Contains wages and salaries data points.

TABLE 1A GROSS OUTPUT

Table with 18 columns (YEAR 6-8, 0-2) and 20 rows (311/2 to 390). Contains gross output data points.

TABLE 20 VALUE ADDED

Table with 18 columns (YEAR 6-8, 0-2) and 20 rows (311/2 to 390). Contains value added data points.

TABLE 21 GROSS FIXED CAPITAL FORMATION

Table with 18 columns (YEAR 6-8, 0-2) and 20 rows (311/2 to 390). Contains gross fixed capital formation data points.

TABLE 51 PRODUCTION INDICES

Table with 18 columns (YEAR 6-8, 0-2) and 20 rows (311/2 to 390). Contains production indices data points.

TOTALS

Summary table with 18 columns (YEAR 6-8, 0-2) and 6 rows (04 to 51). Shows totals for various categories.

TABLE 04 EMPLOYMENT

Table with 17 columns (YEAR, ISIC 3-9) and 20 rows (311-390) showing employment data.

TABLE 20 VALUE ADDED

Table with 17 columns (YEAR, ISIC 3-9) and 20 rows (311-390) showing value added data.

TABLE 05 WAGES AND SALARIES

Table with 17 columns (YEAR, ISIC 3-9) and 20 rows (311-390) showing wages and salaries data.

TABLE 21 GROSS FIXED CAPITAL FORMATION

Table with 17 columns (YEAR, ISIC 3-9) and 20 rows (311-390) showing gross fixed capital formation data.

TABLE 14 GROSS OUTPUT

Table with 17 columns (YEAR, ISIC 3-9) and 20 rows (311-390) showing gross output data.

TABLE 51 PRODUCTION INDICES

Table with 17 columns (YEAR, ISIC 3-9) and 20 rows (311-390) showing production indices data.

TOTALS

Summary table with 17 columns (YEAR, ISIC 3-9) and 5 rows (04, 05, 14, 20, 51) showing totals for various categories.

TABLE 04 EMPLOYMENT

Table with 18 columns (YEAR 63-88) and 28 rows (ISIC 311/2-90). All cells contain dots.

TABLE 05 WAGES AND SALARIES

Table with 18 columns (YEAR 63-88) and 28 rows (ISIC 311/2-90). All cells contain dots.

TABLE 14 GROSS OUTPUT

Table with 18 columns (YEAR 63-88) and 28 rows (ISIC 311/2-90). All cells contain dots.

TABLE 20 VALUE ADDED

Table with 18 columns (YEAR 63-88) and 28 rows (ISIC 311/2-90). All cells contain dots.

TABLE 21 GROSS FIXED CAPITAL FORMATION

Table with 18 columns (YEAR 63-88) and 28 rows (ISIC 311/2-90). All cells contain dots.

TABLE 51 PRODUCTION INDEXES

Table with 18 columns (YEAR 63-88) and 28 rows (ISIC 311/2-90). All cells contain dots.

TOTALS

Summary table with 18 columns (YEAR 63-88) and 5 rows (TABLE 04, 05, 14, 20, 51). Values range from 27 to 28.

DATA AVAILABLE FOR (862) VENEZUELA

TABLE 04 EMPLOYMENT		TABLE 05 WAGES AND SALARIES		TABLE 14 GROSS OUTPUT	
YEAR	6 6 6 6 6 6 7 7 7 7 7 7 7 7 7 7 8 8 8 8	YEAR	6 6 6 6 6 6 6 6 7 7 7 7 7 7 7 7 7 7 8 8 8 8	YEAR	6 6 6 6 6 6 6 6 6 6 7 7 7 7 7 7 7 7 7 7 8 8 8 8
ISIC	3 4 5 6 7 8 9 0 1 2 3 4 5 6 7 8 9 0 1 2	ISIC	3 4 5 6 7 8 9 0 1 2 3 4 5 6 7 8 9 0 1 2	ISIC	3 4 5 6 7 8 9 0 1 2 3 4 5 6 7 8 9 0 1 2
311/2
313
314
321
322
323
324
332
341
342
351
352
353
354
355
356
361
362
369
372
381
382
383
384
385
390

TABLE 20 VALUE ADDED		TABLE 21 GROSS FIXED CAPITAL FORMATION		TABLE 51 PRODUCTION INDEXES	
YEAR	6 6 6 6 6 6 7 7 7 7 7 7 7 7 7 7 8 8 8 8	YEAR	6 6 6 6 6 6 6 6 6 6 7 7 7 7 7 7 7 7 8 8 8 8	YEAR	6 6 6 6 6 6 6 6 6 6 7 7 7 7 7 7 7 7 8 8 8 8
ISIC	3 4 5 6 7 8 9 0 1 2 3 4 5 6 7 8 9 0 1 2	ISIC	3 4 5 6 7 8 9 0 1 2 3 4 5 6 7 8 9 0 1 2	ISIC	3 4 5 6 7 8 9 0 1 2 3 4 5 6 7 8 9 0 1 2
311/2
313
314
322
323
324
331
341
342
351
352
353
354
355
356
361
362
369
372
381
382
383
384
385
390

TOTALS

YEAR	6 6 6 6 6 6 7 7 7 7 7 7 7 7 7 7 8 8 8 8	YEAR	6 6 6 6 6 6 6 6 6 6 7 7 7 7 7 7 7 7 8 8 8 8	YEAR	6 6 6 6 6 6 6 6 6 6 7 7 7 7 7 7 7 7 8 8 8 8
ISIC	3 4 5 6 7 8 9 0 1 2 3 4 5 6 7 8 9 0 1 2	ISIC	3 4 5 6 7 8 9 0 1 2 3 4 5 6 7 8 9 0 1 2	ISIC	3 4 5 6 7 8 9 0 1 2 3 4 5 6 7 8 9 0 1 2
311/2
313
314
322
323
324
331
341
342
351
352
353
354
355
356
361
362
369
372
381
382
383
384
385
390

TABLE 04 EMPLOYMENT

TABLE 05 WAGES AND SALARIES

TABLE 14 GROSS OUTPUT

Table with columns for YEAR (1963-1988) and ISIC (311-390) for EMPLOYMENT. Data points are represented by asterisks.

Table with columns for YEAR (1963-1988) and ISIC (311-390) for WAGES AND SALARIES. Data points are represented by asterisks.

Table with columns for YEAR (1963-1988) and ISIC (311-390) for GROSS OUTPUT. Data points are represented by asterisks.

TABLE 20 VALUE ADDED

TABLE 21 GROSS FIXED CAPITAL FORMATION

TABLE 51 PRODUCTION INDEXES

Table with columns for YEAR (1963-1988) and ISIC (311-390) for VALUE ADDED. Data points are represented by asterisks.

Table with columns for YEAR (1963-1988) and ISIC (311-390) for GROSS FIXED CAPITAL FORMATION. Data points are represented by asterisks.

Table with columns for YEAR (1963-1988) and ISIC (311-390) for PRODUCTION INDEXES. Data points are represented by asterisks.

TOTALS

Summary table showing totals for years 63 through 88 across various categories (04, 05, 14, 20, 21, 51).

APPENDIX

DEFINITION* OF VARIABLES FOR WHICH DATA ARE STORED IN THE CONSOLIDATED FIELDS

COUNTRY	CONSOLIDATED TABLE NUMBER			COUNTRY	CONSOLIDATED TABLE NUMBER		
	4	14	20		4	14	20
Afghanistan	03	14		Egypt	04	12	19
Algeria	04	13	19	El Salvador	03	14	19
Angola	03			Ethiopia	03c/	13	19
Argentina	04	14	20	Fiji	04	13	19
Australia	04	12	18	Finland	04	12	18
Austria	04	13	19	France	04	13	19
Bahamas	04	13	19	Gabon	03c/	14	19b/
Bangladesh	04	13	19	Gambia	04	13	19
Barbados	03	13	19	German Dem.Rep.	04	14	
Belgium	04	12	18	Germany, Fed. Rep.	04a/	13	19
Belize		14		Ghana	03	13	19
Bolivia	04a/	13	19	Greece	04	12	18
Botswana	03	12	18	Guatemala	03	13	19
Brazil	03	13	19	Guyana	04		
Bulgaria	04			Haiti	04		19
Burkina-Faso	04		20	Honduras	03	13	19
Burma	03	13	20	Hong Kong	04a/	13	19
Burundi	04	14		Hungary	04	14	20
Cameroon	04	13	19	Iceland	03	12	18
Canada	04	12	18	India	03	12	18
Cape Verde	03			Indonesia	04	13	18
Central African Rep.	04	12	18	Iran	04	13b/	19d/
Chile	04	13	19	Iraq	04a/	12	18
China	04	14		Ireland	04	12	18
Colombia	04	13b/	19b/	Israel	04	13	19
Congo	04	13	19	Italy	04	14	20
Costa Rica	04a/	13	19	Ivory Coast	04	13	19
Cuba	04	14		Jamaica	04	12	19d/
Cyprus	04a/	13b/	19b/	Japan	04a/	14	20
Czechoslovakia	04	14	20	Jordan	04a/	13	19
Democratic Kampuchea	03	13	19	Kenya	03	12	18
Democratic Yemen	03	13		Korea, Rep. of	04a/	13	19
Denmark	04	12	18	Kuwait	03c/	13	19
Dominican Republic	04	13b/	19	Lesotho	04	13	19
Equador	04	13b/	19b/	Liberia	03	13	

* For footnotes and key to codes, see end of table.

DEFINITION* OF VARIABLES FOR WHICH DATA ARE STORED IN THE CONSOLIDATED FIELDS
(continued)

COUNTRY	CONSOLIDATED TABLE NUMBER			COUNTRY	CONSOLIDATED TABLE NUMBER		
	4	14	20		4	14	20
Libyan Arab Jamahiriya	04	13	19	Samoa	03	12	18
Luxembourg	04	12	18	Saudi Arabia	04	13	19
Macau	03	13	19	Senegal	04	13	19
Madagascar	04	13	19	Seychelles	04	14	20
Malawi	04 <u>a</u> /	12	18	Sierra Leone	03	13	19
Malaysia, West	04	12	18	Singapore	04	12	18
Sabah	03	12	18	Solomon Islands	04		
Sarawak	04	12	18	Somalia	04	13	19
Mali	04	14	20	South Africa	03	14 <u>d</u> /	18
Malta	04	13	18 <u>b</u> /	Spain	04	12	18
Mauritania	04	14	20	Sri Lanka	04	12 <u>b</u> /	18 <u>b</u> /
Mauritius	03	13	19	Sudan	04	13	18
Mexico	04	13	19	Suriname	03	12	
Mongolia	04	14		Swaziland	03	13	19
Morocco	04	14	18 <u>b</u> /	Sweden	04	12	18
Mozambique	04	14	20	Switzerland	03		18
Nepal	04	13	19	Syrian Arab Rep.	03	13	19
Netherlands	04	12	18	Thailand	04	13	19
New Zealand	04	14	19	Togo	02	13	19
Nicaragua	04	13	19	Tonga	04	13	19
Niger	03	14	20	Trinidad+Tobago	04	14	20
Nigeria	04	13	19	Tunisia	04	13	19
Norway	04	14	20	Turkey	04 <u>a</u> /	13	19
Oman	04	13	19	Uganda	03	12	18
Pakistan	04	13	19	USSR	02	14	
Panama	04	13	19	United Arab Em.	03 <u>c</u> /	13	19
Papua New Guinea	04	12	18	United Kingdom	04	12	18
Paraguay	04	14	19	U. Rep. Tanzania	04	12	18
Peru	03	13	19	United States	04	14	18
Philippines	04 <u>a</u> /	13	19	Uruguay	04	14	20
Poland	04 <u>a</u> /	14	20	Venezuela	03	13	19
Portugal	04	13	19 <u>d</u> /	Yemen	04	12	18
Puerto Rico	04			Yugoslavia	03	14	20
Romania	04			Zaire	04 <u>a</u> /	14	20
Rwanda	04 <u>a</u> /	13	19	Zambia	04	13	19
				Zimbabwe	04	12	18

* For footnotes and key to codes, see end of table.

(continued)

a/ Average number of persons engaged for one or more years.
b/ Valuation unknown for one or more years.
c/ Average number of employees for one or more years.
d/ Valuation at factor values for one or more years.

Key to the codes shown in the table are as follows:

03 Average number of persons engaged.
04 Average number of employees.
12 Gross output in factor values.
13 Gross output in producers' values.
14 Gross output, valuation unknown.
18 Value added in factor values.
19 Value added in producers' values.
20 Value added, valuation unknown.

