



TOGETHER
for a sustainable future

OCCASION

This publication has been made available to the public on the occasion of the 50th anniversary of the United Nations Industrial Development Organisation.



TOGETHER
for a sustainable future

DISCLAIMER

This document has been produced without formal United Nations editing. The designations employed and the presentation of the material in this document do not imply the expression of any opinion whatsoever on the part of the Secretariat of the United Nations Industrial Development Organization (UNIDO) concerning the legal status of any country, territory, city or area or of its authorities, or concerning the delimitation of its frontiers or boundaries, or its economic system or degree of development. Designations such as “developed”, “industrialized” and “developing” are intended for statistical convenience and do not necessarily express a judgment about the stage reached by a particular country or area in the development process. Mention of firm names or commercial products does not constitute an endorsement by UNIDO.

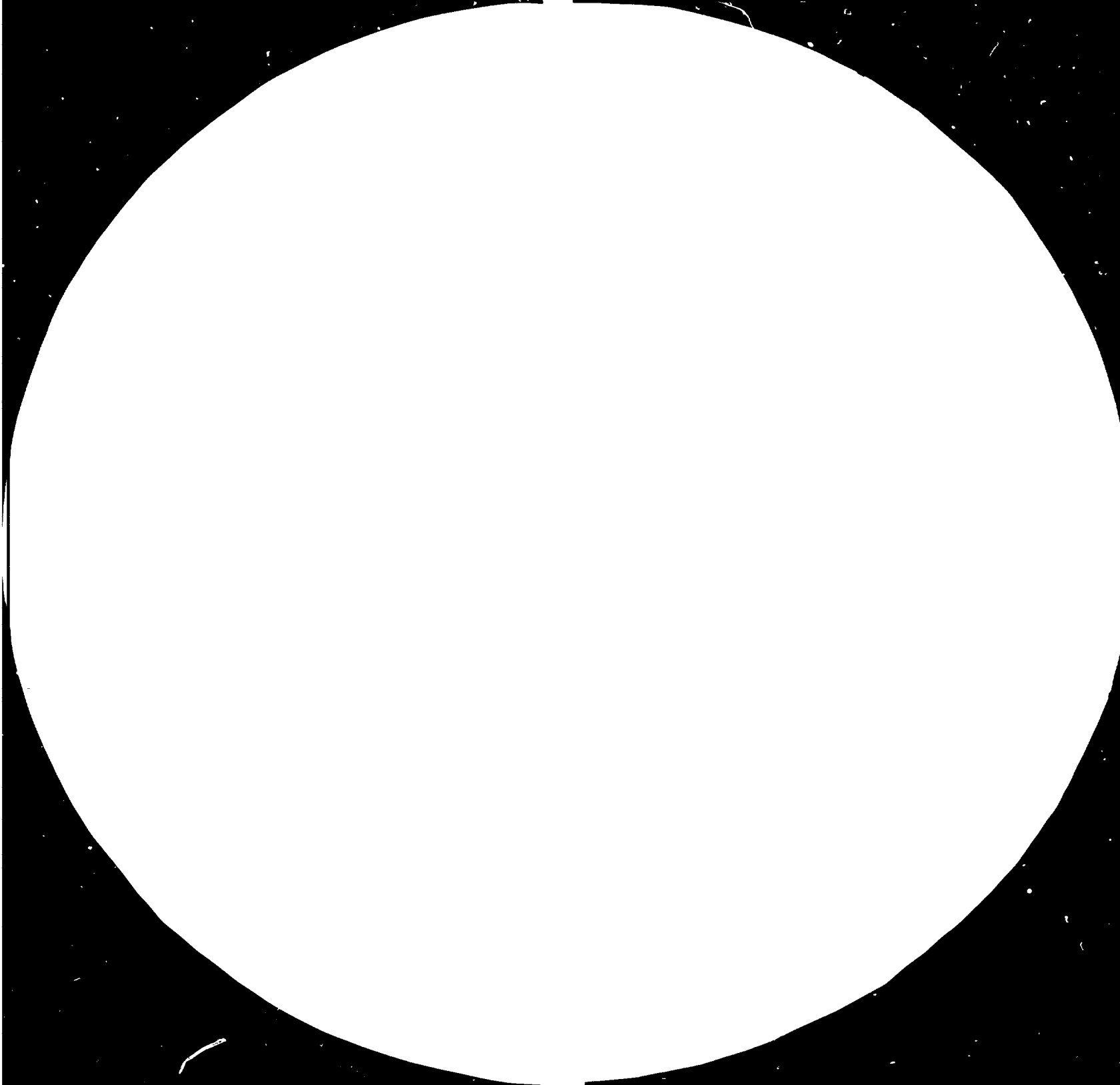
FAIR USE POLICY

Any part of this publication may be quoted and referenced for educational and research purposes without additional permission from UNIDO. However, those who make use of quoting and referencing this publication are requested to follow the Fair Use Policy of giving due credit to UNIDO.

CONTACT

Please contact publications@unido.org for further information concerning UNIDO publications.

For more information about UNIDO, please visit us at www.unido.org



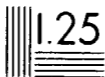


1.0 25

1.1 22



1.2 20



Microcopy Resolution Test Chart, 1963 Edition
NBS Monograph 17
National Bureau of Standards
Gaithersburg, Maryland 20899
U.S. GOVERNMENT PRINTING OFFICE: 1963

14584

**DEVELOPMENT OF
CAPITAL GOODS INDUSTRIES**

DP/TUR/76/034

TURKEY

Technical Report No. XXVIII Report on Computerisation
of Demand Data for
the Iron Ore Mining Industry
(I.D.C.D.)

M. M. Luther

UNITED NATIONS DEVELOPMENT PROGRAMMES IN TURKEY

UNITED NATIONS INDUSTRIAL DEVELOPMENT ORGANISATION

RESTRICTED

English

DEVELOPMENT OF
CAPITAL GOODS INDUSTRIES
DP/TUR/76/034
TURKEY

Technical Report No. XXVIII - Report on Computerisation of Demand data for
the Iron Ore Mining Industry (I.D.C.I)

Prepared for the Government of Turkey
by the United Nations Industrial Development Organisation
acting as executing agency for the United Nations Development Programme

Based on the work of
Capital Goods Development Project in Turkey

United Nations Industrial Development Organisation
Vienna

This report has not been cleared with the United Nations Industrial Development
Organisation which does not, therefore, necessarily share the views presented.

Birleşmiş Milletler Kalkınma Programı

UNITED NATIONS

NATIONS UNIES

DEVELOPMENT PROGRAMME IN TURKEY
CAPITAL GOODS DEVELOPMENT PROJECT IN TURKEY

LIST OF TABLES

Table 1.	List of sectors selected for the Project -----	3
Table 2.	Comparison of investment projections in Projects Technical Report and those indicated by SPO with reference to 5th. Five Year Development Plan for Iron Ore Mining (T.D.C.I) -----	6

Birleşmiş Milletler Kalkınma Programı

UNITED NATIONS

NATIONS UNIES

DEVELOPMENT PROGRAMME IN TURKEY

CAPITAL GOODS DEVELOPMENT PROJECT IN TURKEY

LIST OF CONTENTS

	<u>Pages</u>
Chapter I Introduction -----	1-3
Chapter II Objectives of the Capital Goods Development Project and Computerisation -----	4-7
Chapter III Conclusion -----	8

UNITED NATIONS

NATIONS UNIES

DEVELOPMENT PROGRAMME IN TURKEY
CAPITAL GOODS DEVELOPMENT PROJECT IN TURKEY

LIST OF ANNEXURES

Ann. I	Equipment requirement (5 digit) by weight -----	9-10
Ann. II	Equipment requirement (5 digit) by value -----	11-12
Ann. III	Permutation of plate fabricated equipment by weight -----	13
Ann. IV	Permutation of plate fabricated equipment by value -----	14
Ann. V	Machinery requirement (15 digit) by weight -----	15-17
Ann. VI	Machinery requirement (15 digit) by value -----	18-20
Ann. VII	Equipment requirement for the new Yedigöller Plant by weight -----	21-23
Ann. VIII	Equipment requirement for the new Erciyes Çelebi Plant by value -----	23-24
Ann. IX	Equipment requirement for the new Samsat Plant by weight -----	25
Ann. X	Equipment requirement for the new Erciyes Plant by value -----	26
Ann. XI	Equipment requirement for the new Ayazmant Plant by weight -----	27
Ann. XII	Equipment requirement for the new Ayazmant Plant by value -----	28
Ann. XIII	Equipment requirement for the expansion of Ayazmant B. Egmir Plant by weight -----	29
Ann. XIV	Equipment requirement for the expansion of Ayazmant B. Egmir Plant by value -----	30
Ann. XV	Equipment requirement for the exp./rep. of Divriği Plant by weight (1981-1990) -----	31
Ann. XVI	Equipment requirement for the expansion of Divriği Plant by value (1981-1990) -----	32

Birleşmiş Milletler Kalkınma Programı

UNITED NATIONS

NATIONS UNIES

DEVELOPMENT PROGRAMME IN TURKEY
CAPITAL GOODS DEVELOPMENT PROJECT IN TURKEY

Ann. XVII	Equipment requirement for the exp./rep. of Elmadag-Attepe-Mentes-K.Kopru-K.Kaya Plant by weight -----	33
Ann. XVIII	Equipment requirement for the exp./rep. of Elmadag-Attepe-Mentes-K.Kopru-K.Kaya Plant by value -----	34
Ann. XIX	Equipment requirement for the exp./rep. of Akdag-O.Kilise-C.Kaya-Bizmisli Plant by weight -----	35
Ann. XX	Equipment requirement for the exp./rep. of Akdag-O.Kilise-C.Kaya-Bizmisli Plant by value -----	36
Ann. XXI	Equipment requirement for the exp./rep. of Divrigi Plant (1991-2000) by weight -----	37
Ann. XXII	Equipment requirement for the exp./rep. of Divrigi Plant (1991-2000) by value -----	38
Ann. XXIII	Equipment requirement for the replacement of Ayazmant Egmir by weight -----	39
Ann. XXIV	Equipment requirement for the replacement of Ayazmant E.Egmir by value -----	40
Ann. XXV	Equipment requirement for the replacement of Elmadag-Attepe-Mentes-K.Kopru-K.Kaya by weight -----	41
Ann. XXVI	Equipment requirement for the replacement of Elmadag-Attepe-Mentes-K.Kopru-K.Kaya by value -----	42
Ann. XXVII	Equipment requirement for the replacement of Akdag-O.Kilise-C.Kaya-Bizmisli Plants by weight -----	43
Ann. XXVIII	Equipment requirement for the replacement of Akdag-O.Kilise-C.Kaya-Bizmisli Plants by value -----	44

UNITED NATIONS

NATIONS UNIES

DEVELOPMENT PROGRAMME IN TURKEY

Page 1

REPORT ON
COMPUTERISATION OF DEMAND DATA

1965

1. INTRODUCTION

1.1. Capital Goods Development Project conducted by SPO in close collaboration with the United Nations Industrial Development Organisation (UNIDO) was directed toward the capital goods manufacturing industries. For planning of the capital industry, demand data collected from the sector which by the Government has been computerised according to the methodology for the project detailed in Technical Report No. I. The sectors selected are given on table I.

1.2. State Institute of Statistics (SİS) at the request of SPO, carried out the computerisation under the guidance of the Capital Goods Project.

1.3. This report gives the demand data and outputs of computerisation for Iron Ore Mining Sector (TMMOB). Details of the demand data for the years according to earlier plans and programmes were given in the Technical Report No. XV.

1.4. The future plans have been prepared by SPO and indicated in the draft of the 5th Five Year Plan. Accordingly the demand for capital goods has been computerised on the revised plans. These have been used as the basis of this aggregation.

Birleşmiş Milletler Kalkınma Programı

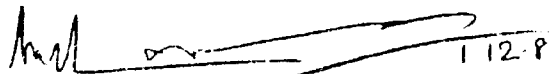
UNITED NATIONS

NATIONS UNIES

DEVELOPMENT PROGRAMME IN TURKEY

Page 2.

- 1.5. The main objective of the computerisation is aggregation of the total national demand for plate fabricated equipment (in terms of permutations and combinations of codified range of weight, types of material and plate thicknesses) and for other machinery in terms of major specifications and nomenclature.
- 1.6. The study was conducted by Mrs. Emine Abdal, SPO expert under the direction of Mr. M.M. Luther, Chief Technical Adviser, Capital Goods Project.
- 1.7. The project management is grateful to SIS President Mr. Nihat Guner, Head of the Technical Department Mr. Sefik Yildizeli and Mr. Erdal Bozkus who carried out the computerisation work.
- 1.8. Mr. Vahit Erdem, National Project Coordinator of the Capital Goods Development Project and Head of Sectoral Planning Division, SPO, has been associated with the work at all stages.

 112-83
M.M. LUTHER,
C.ENG. F. I. MECH. E. (LOND), F. I. PROD. E. (LOND)
CHIEF TECHNICAL ADVISER,
CAPITAL GOODS PROJECT IN TURKEY.

CAPITAL GOODS DEVELOPMENT STRATEGY IN INDIA

NATIONAL PRIORITIES

USER INDUSTRIES

POWER

Generation

Distribution

Transmission

MINING {FERROUS NONFERROUS, COAL, CHEMICALS}

PULP & PAPER

CEMENT

FOOD & BEVERAGES

CHEMICALS & PETROCHEMICALS

FERTILISERS & PESTICIDES

RAILWAYS

Whose capital goods require for manufacture

MACHINE BUILDING INDUSTRIES

MACHINE TOOLS METAL CUTTING

" " " FORMING

DIESEL & PETROL ENGINES

ELECTRIC MOTORS & INDUSTRIAL

MACHINERY

PUMPS & COMPRESSORS

Which require for manufacture

FACILITIES FOR HIGH ACCURACY

MAINTENANCE & REPAIR

AND

WARRANTY PARTS
WHEEL PARTS OF
CASTINGS
FORGING
ELECTRONICS

Handwritten signature and date

CHAPTER II

2.1. Objectives of the Capital Goods Development Project and computerisation

2.1.1. The main objective of the Capital Goods Development Project is to plan the long range development of capital goods industry in Turkey through identification of requirements of machinery and plate fabricated equipment of industrial plants planned to be constructed up to 2000. and prepare plans for their manufacture by expansion/modernisation/rehabilitation of existing units, modification of new units being set up and if still necessary by new investments.

2.1.2. The demand for capital goods for process industries has been determined by following the methodology presented in Technical Report No. I. Methodology for Planning of Capital Goods Industries by CTA, UNIDO. It deals with the details of equipment and machinery in terms of their specifications as well as manufacturing characteristics.

2.1.3. A 15 digit system based on the 5 digit SITC code has been evolved to cover all capital goods expected to be used in sectors considered by the Capital Goods Development Project in Turkey. The first 5 digits are the SITC codes and classify machines and equipment according to their functions. The next 9 digits have been allocated for definition of nomenclature, specifications and manufacturing characteristics, and the last digit is used for information on whether it is imported or manufactured in Turkey. This system is schematically shown on Page 7

2.1.4. The capital goods requirement up to 2000 by the Iron Ore Mining (I.D.C.I) have been determined and codified under 15 digit codes. The information gathered are transferred on to a computer programme and data aggregated. The computer outputs give the total requirement for capital goods both by weight and cost, yearwise, on the basis of anticipated year of commissioning of user plants. The results are analysed with respect to existing manufacturing capacity for different types of capital goods at different specifications so that additional manufacturing facilities where necessary can be planned in time.

2.1.5. The computer outputs are mainly of three types. The first one shows the equipment requirement by 3 digit. The second one shows the demand for plate fabricated equipment in terms of weight, material and plate thickness. The third one is the 15 digit aggregation of machinery.

2.2. The capital goods requirement of Iron Ore Mining Sector (I.D.C.I) mentioned in the related technical report No. 10, have been updated on the basis of the draft 5th. Five Year Plan and data computerised. The updated project list is on table No. 1.

CAPITAL GOODS DEVELOPMENT PROJECT IN TURKEY

Page 11

Table no. 2

COMPARISON OF INVESTMENT PROJECTIONS
IN PROJECT'S TECHNICAL REPORTS AND THOSE
INDICATED BY SPO WITH REFERENCE TO FIFTY
5 YEAR DEVELOPMENT PLAN IN APRIL 1983

IRON ORE MINING (TDCI)

SITE	Technical Report No.XV		SPO April 1983		REMARKS
	Capacity(T/Y) (of Raw Ore)	Ant. Year of Comm.	Capacity(T/Y) (of Raw Ore)	Ant. Year of Comm.	
1-NEW MINES					
Hasan Çelebi	18.500.000	1993	18.500.000* (3.000.000 t/y pellet)	1993	An alternative is being consid- ered:
Deveci	1.290.000	1988	1.300.000	1993	1.600.000 tons of sinter and 2.000.000 t/y of raw ore.
Avnik-Bingöl	-	-	500.000	1993	
2- EXPANSION/ REPLACEMENT					
Elmadıç-Adana	200.000	1993*	100.000	1988	It is assumed that the capacity increase will be included in VITE plan.
Çavdar-Aydın	100.000	1988	-	-	
Ayazment-Balıkesir	50.000	1983	100.000	1986	
Attepe-Adana	1.000.000	1988	1.000.000	1988	
Mentes-Kayseri	150.000	1983	150.000	1983	
Bizmişen-Erzin- can	300.000	1993	300.000	1993	
K.Köprü-Ankara	200.000	1983	200.000	1983	
O.Kilise-Sivas	300.000	1993*	200.000	1984	
Ç.Kaya-Sivas	300.000	1993*	100.000	1985	
B.Eğmir-Balıkesir	275.000	1988	200.000	1988	
K.Kaya-Kayseri(R)	150.000	-	150.000	-	
K.Dağ-Kayseri(R)	60.000	-	60.000	-	
Akdağ-Sivas(R)	75.000	-	80.000	-	
Avnik-Bingöl	300.000	1986	-	-	
D.İvriği	4.5 Mt/y	1988	4.5 Mt/y	1988	

UNITED NATIONS NATIONS UNIES
 DEVELOPMENT PROGRAMME IN TURKEY
UNIDO- CAPITAL GOODS DEVELOPMENT PROJECT IN TURKEY

Page 7

LAYOUT OF 15 DIGIT CODES FOR CAPITAL GOODS

1 2 3 4 5	SIC Group name
6 7	Machine name
8	Major specification (Cap)
9	Major specification (Det)
10	Major specification (Opt)
11	Type
12	Manufacturing Characteristic
13	Manufacturing Characteristic
14	Manufacturing Characteristic
15	Origin

(x) Type of material in the case of fabricated equipment
 (e.g. type of steel) and that of principal parts in the case
 of machines (e.g. type of casting).

(xx) Plate thickness in the case of fabricated equipment and
 maximum weight of component in the case of machinery.

UNITED NATIONS REPUBLIC OF TURKEY
DEVELOPMENT PROGRAMME
CAPITAL GOODS DEVELOPMENT PROJECT IN TURKEY

CHAPTER III

CONCLUSIONS

3.1. CONCLUSIONS

3.1.1. The demand for capital goods for the period
in the period 1951-1990 is as under:

Table 3.1.1

Fabricated equipment	9331.0
Machinery	36227.4
Grand total	45558.4

3.1.2. The demand for capital goods for the period
in the period 1950-2000 is as under:

Table 3.1.2

Fabricated equipment	
Machinery	3330.4
Grand total	3330.4

UNIDO-SPECT-D.C.I.)

COMMODITY CODE : 2301-1

CAPITAL GOODS DEVELOPMENT PROJECT IN TURKEY

SITE CODE	BASIC MACHINE NAME	CAPITAL GOODS REQUIREMENT FOR T.O.C.I. QTY	WEIGHT IN TONS												
			1981	1982	1983	1984	1985	1986	1987	1988	1989	1990	TOTAL		
69211	RESERVOIRS, TANKS ETC	39	.0	.0	.0	.0	.0	.0	.0	.0	.0	.0	.0	3460.8	3460.8
72341	BULLDOZERS, ANGLEDZERS, LEVEL.	32	.0	.0	240.0	168.0	.0	115.0	.0	.0	226.8	154.9	904.7		
72342	MECHANICAL SHOVELS AND EXCAVAT	43	.0	.0	133.0	492.0	.0	134.0	83.4	378.0	4798.0	450.0	6418.4		
72743	BLASTHOLE DRILLS, DRILL MACH.	38	.0	.0	147.0	132.0	.0	24.0	.0	8.0	514.0	40.0	1165.0		
72831	SCREENS, FINE CLASS., SEPARATORS	185	.0	.0	16.0	.0	12.0	.0	.0	.0	.0	1337.2	1367.2		
72432	CRUSHERS, GRINDING MILLS	40	.0	.0	40.0	.0	154.0	.0	.0	.0	30.0	7330.0	7554.0		
72833	TRAFNS	1	.0	.0	.0	.0	.0	.0	.0	.0	.0	13.2	13.2		
72934	AGGREGATORS	2	.0	.0	.0	.0	.0	.0	.0	.0	.0	600.0	600.0		
74132	IND. AND LAB. NON-CLAY FURNACE	18	.0	.0	.0	5.2	.0	.0	.0	.0	.0	.0	5.2		
74143	HEATING, COOKING AND ROAST. O.	1	.0	.0	.0	.0	.0	.0	.0	.0	.0	5050.0	5050.0		
74220	CENTRIFUGAL PUMPS	10	.0	.0	.0	.0	.0	.0	.0	.0	.0	78.0	78.0		
74312	VACUUM PUMPS AND EXHAUST	4	.0	.0	.0	.0	.0	.0	.0	.0	.0	11.2	11.2		
74313	AIR OR GAS COMPRESSORS	1	.0	.0	.0	.0	1.5	.0	.0	.0	.0	.0	1.5		
74342	BLOWERS	4	.0	.0	.0	.0	63.0	.0	.0	.0	.0	.0	63.0		
74361	FILT. AND PURIFYING APP. FOR GAS	17	.0	.0	.0	.0	.0	.0	.0	.0	.0	195.0	195.0		
74362	FILT. AND PURIFYING APP. FOR LIQ	13	.0	.0	.0	.0	.0	.0	.0	.0	.0	620.0	620.0		
74411	FURN LIFT, DUMP, TRAILER, TRUCKS	124	.0	.0	268.0	.0	577.5	75.0	.0	125.0	3128.0	.0	5171.5		
74428	CONVEYORS, MECHANICAL	57	.0	.0	.0	.0	481.7	.0	.0	.0	.0	6398.0	6879.7		
TOTAL :		1044			792.2	1199.7	348.0	33.4	511.0	6598.0	26735.3	31586.4			

COMMUNITY CODE : 2301-1

CAPITAL GOODS DEVELOPMENT PROJECT IN TURKEY

CAPITAL GOODS PURCHASEMENT FOR T.O.C.I. *EIGHT ITEMS

SITE CODE	BASIC PURCHASE DATE	1991	1992	1993	1994	1995	1996	1997	1998	1999
72141	MULLDOZERS,ANGLEDOZERS,AWL	15	75.0	270.0	0	0	15.0	0	0	300.0
72142	MECHANICALS,HVELS,AND FACAM	17	0	34.0	133.0	0	0	129.0	0	1330.0
72143	PLASTICLUBS,BILLBOARDL,VA	1	32.0	15.0	10.0	0	10.0	0	0	182.0
72831	SPEEKS,AWEL,CLASS,SEPARATI	26	3.0	0	0	16.5	0	0	0	114.3
72332	CRUCCERS,GRINDING MILLS	1	10.0	0	0	0	0	0	0	10.0
74121	BOLLER BURERS	1	0	0	0	0	0	0	0	0
74220	FERITIFUL BURERS	7	0	15.4	0	0	0	0	0	15.4
74240	DEL AAR,LECTRIC,VALVE TIC	1	0	1.8	0	0	0	0	0	1.8
74312	VACUUM PUMPS AND ELECTRIKA	22	0	116.4	0	0	0	0	0	116.4
74313	AIR GRUAS COMPRESSORS	10	0	0	0	0	0	0	0	0
74341	KAN	6	0	0	0	0	0	0	0	93.0
74340	WHEELS,GRINDING MILLS	40	0	225.0	0	0	783.5	0	0	1255.5

YEAR	1991	1992	1993	1994	1995	1996	1997	1998	1999
TOTAL	75.0	322.0	405.0	16.5	15.0	129.0	15.0	142.2	1420.4

UNITED STATES OF AMERICA

COMMODITY CODE : 2301-1

CAPITAL GOODS DEVELOPMENT PROJECT IN TUNISIA

SIC-CODE	BASIC MACHINE NAME	CAPITAL GOODS REQUIREMENT FOR F.P.C.I. QTY	VALUE IN 1000 US\$											
			1981	1982	1983	1984	1985	1986	1987	1988	1989	1990	TOTAL	
59211	RESERVOIRS, TANKS ETC	30	.0	.0	.0	.0	.0	.0	.0	.0	.0	.0	4257.0	4257.0
72341	BULLDOZERS, ANGLEDZERS, LEVEL	32	.0	.0	1500.0	1224.0	.0	720.0	.0	.0	1091.1	975.0	5590.1	
72342	MECHANICAL SHOVELS AND EXCAVAT	47	.0	.0	520.0	3135.8	.0	1136.9	565.4	1367.7	15073.4	547.0	26009.0	
72343	BLASTHOLE DRILLS, DRILL MACH.	34	.0	.0	750.0	1773.0	.0	125.0	.0	.0	3235.8	497.0	5363.8	
72831	SCREENS, NET CLASS, SEPARATORS	135	.0	.0	160.0	.0	135.6	.0	.0	.0	.0	.0	5043.3	5338.9
72832	CRUSHERS, GRINDING MILLS	40	.0	.0	160.0	.0	1541.7	.0	.0	.0	.0	.0	119.22	5447.027267.9
72833	MIXERS	1	.0	.0	.0	.0	.0	.0	.0	.0	.0	.0	45.8	45.8
72834	AGGLOMERATORS	5	.0	.0	.0	.0	.0	.0	.0	.0	.0	.0	1440.0	1440.0
74132	IND. AND LAB. NON-ELEC. FURNACE	19	.0	.0	.0	1243.9	.0	.0	.0	.0	.0	.0	.0	1243.9
74163	HEATING, COOKING AND DRYING EQ.	1	.0	.0	.0	.0	.0	.0	.0	.0	.0	.0	7548.7	7548.7
74220	CENTRIFUGAL PUMPS	10	.0	.0	.0	.0	.0	.0	.0	.0	.0	.0	467.5	467.5
74312	VACUUM PUMPS AND EJECTORS	4	.0	.0	.0	.0	.0	.0	.0	.0	.0	.0	67.4	67.4
74313	AIR OR GAS COMPRESSORS	1	.0	.0	.0	.0	34.0	.0	.0	.0	.0	.0	.0	34.0
74342	BLOWERS	9	.0	.0	.0	.0	622.3	.0	.0	.0	.0	.0	.0	622.3
74361	FILT. AND PURIFYING APP. FOR GAS	17	.0	.0	.0	.0	.0	.0	.0	.0	.0	.0	1239.8	1239.8
74362	FILT. AND PURIFYING APP. FOR LIQ	13	.0	.0	.0	.0	.0	.0	.0	.0	.0	.0	1266.1	1266.1
74411	FORKLIFT, DUMP, TRAILER TRUCKS	124	.0	.0	2500.0	.0	6750.0	330.0	.0	110.0	14001.5	.0	24591.5	
74426	CONVEYORS, MECHANICAL	87	.0	.0	.0	.0	2955.4	.0	.0	.0	.0	.0	23682.32	547.7
TOTAL :		666	.0	.0	5670.0	7379.5	12099.0	2371.9	565.4	1477.7	38421.0	72923.9	140908.4	

UNIT SPECIFICATION : 2301-1

CAPITAL GOODS DEVELOPMENT PROJECT IN TURKEY

CAPITAL GOODS REQUIREMENT FOR P.O.C.I. VALUE IN 1000 US\$

SIC CODE	BASIC MACHINE	CITY	1991	1992	1993	1994	1995	1997	1998	1999
72341	SULLUGERS, ANGELEDGERS, L.V.L.	15	524.0	150.0	0	0	80.0	0	0	246.0
72342	MECHANICAL SHOVELS AND EXCAVAT	17	253.0	750.0	0	0	750.0	0	0	5320.0
72343	CLASSICAL PULVERISERS, MILL MACH	15	250.0	225.0	0	0	203.0	0	0	112.0
72831	CONCRETE CLASSES, SEPARATORS	25	30.0	0	0	19.3	0	323.0	0	371.3
72832	CRUSHERS, GRINDING MILLS	4	60.0	0	0	0	0	0	0	60.0
74121	GRINDER BATTERS	1	0	3.4	0	0	0	0	0	3.4
74220	CENTRIFUGAL PUMPS	7	0	20.7	0	0	0	0	0	20.7
74240	JET AND ELECTRO-MAGNETIC PUMPS	1	0	13.6	0	0	0	0	0	13.6
74312	VACUUM PUMPS AND EXHAUSTORS	23	0	156.6	0	0	0	0	0	156.6
74313	AIR OR GAS COMPRESSORS	10	0	0	0	0	0	0	0	0
74341	FANS	5	0	0	0	0	0	0	0	237.0
74411	PORTRAIT PUMP, TABLE, IRONERS	40	85.0	1217.0	0	0	732.0	0	0	7320.0
74426	CONVEYORS, MECHANICAL	33	0	15.2	0	703.0	0	0	0	711.8
TOTAL			233.0	4317.7	0	2023.3	2255.0	309.6	0	5597.0

FORM NO. 117 (02) - 2-01-1

WILSON COUNTY
 CAPITAL AND DEBT SERVICE PROJECT ACCOUNT
 STATEMENT OF FINANCIAL POSITION AS OF YEAR END

Account by Year

ACCOUNT	1951	1952	1953	1954	1955	1956	1957	1958	1959	1960	TOTAL
65011	1.00	0.00	2.00	0.00	2.00	0.00	0.00	0.00	0.00	110.00	115.00
651	0.00	0.00	1.00	0.00	0.00	0.00	0.00	0.00	0.00	50.00	50.00
693	0.00	0.00	0.00	0.00	0.00	0.00	0.00	0.00	0.00	330.00	330.00
1214	0.00	0.00	0.00	0.00	0.00	0.00	0.00	0.00	0.00	210.00	210.00
7-132	0.00	0.00	0.00	5.20	0.00	0.00	0.00	0.00	0.00	0.00	5.20
1214	0.00	0.00	0.00	0.00	0.00	0.00	0.00	0.00	0.00	0.00	0.00
74163	0.00	0.00	0.00	0.00	0.00	0.00	0.00	0.00	0.00	500.00	500.00
1214	0.00	0.00	0.00	0.00	0.00	0.00	0.00	0.00	0.00	500.00	500.00
74301	0.00	0.00	0.00	0.00	0.00	0.00	0.00	0.00	0.00	75.00	75.00
1214	0.00	0.00	0.00	0.00	0.00	0.00	0.00	0.00	0.00	120.00	120.00
1214	0.00	0.00	0.00	0.00	0.00	0.00	0.00	0.00	0.00	195.00	195.00
74302	0.00	0.00	0.00	0.00	0.00	0.00	0.00	0.00	0.00	170.00	170.00
694	0.00	0.00	0.00	0.00	0.00	0.00	0.00	0.00	0.00	450.00	450.00
1214	0.00	0.00	0.00	0.00	0.00	0.00	0.00	0.00	0.00	120.00	120.00

744111064013932	AN FC TRUCK	3.00	.0	.0	.0	.0	.0	.0	.0	.0	33.0	.0	33.0
744112022003742	DUMP TRUCK	19.00	.0	.0	315.0	.0	.0	.0	.0	.0	.0	.0	315.0
744112024003932	DUMP TRUCK	32.00	.0	.0	850.0	.0	.0	75.0	.0	125.0	.0	.0	850.0
744112036003742	DUMP TRUCK	9.00	.0	.0	.0	.0	.0	.0	.0	.0	280.0	.0	280.0
744112046004942	DUMP TRUCK	27.00	.0	.0	.0	.0	377.5	.0	.0	.0	.0	.0	377.5
744112055003942	DUMP TRUCK	41.00	.0	.0	.0	.0	.0	.0	.0	.0	2789.0	.0	2789.0
744260111011921	FLAT BELT CONVEYOR	1.00	.0	.0	.0	.0	4.5	.0	.0	.0	.0	.0	4.5
744260111012921	FLAT BELT CONVEYOR	2.00	.0	.0	.0	.0	21.0	.0	.0	.0	.0	.0	21.0
744260112013921	FLAT BELT CONVEYOR	1.00	.0	.0	.0	.0	16.0	.0	.0	.0	.0	.0	16.0
744260122013921	FLAT BELT CONVEYOR	1.00	.0	.0	.0	.0	10.0	.0	.0	.0	.0	.0	10.0
744260132011911	FLAT BELT CONVEYOR	4.00	.0	.0	.0	.0	5.6	.0	.0	.0	.0	.0	5.6
744260132012921	FLAT BELT CONVEYOR	4.00	.0	.0	.0	.0	22.0	.0	.0	.0	.0	.0	22.0
744260143012930	FLAT BELT CONVEYOR	1.00	.0	.0	.0	.0	8.5	.0	.0	.0	.0	.0	8.5
744260143013900	FLAT BELT CONVEYOR	2.00	.0	.0	.0	.0	31.0	.0	.0	.0	.0	.0	31.0
744260163013900	FLAT BELT CONVEYOR	1.00	.0	.0	.0	.0	18.0	.0	.0	.0	.0	.0	18.0
744260173011910	FLAT BELT CONVEYOR	1.00	.0	.0	.0	.0	1.5	.0	.0	.0	.0	.0	1.5
744260173011921	FLAT BELT CONVEYOR	1.00	.0	.0	.0	.0	2.0	.0	.0	.0	.0	.0	2.0
744260173013931	FLAT BELT CONVEYOR	1.00	.0	.0	.0	.0	20.0	.0	.0	.0	.0	.0	20.0
744260173017931	FLAT BELT CONVEYOR	1.00	.0	.0	.0	.0	250.0	.0	.0	.0	.0	.0	250.0
744260243013941	TROUGHED BELT CONV.	15.00	.0	.0	.0	.0	.0	.0	.0	.0	.0	180.0	180.0
744260243015992	TROUGHED BELT CONV.	2.00	.0	.0	.0	.0	.0	.0	.0	.0	.0	1400.0	1400.0
744260243015992	TROUGHED BELT CONV.	1.00	.0	.0	.0	.0	.0	.0	.0	.0	.0	300.0	300.0
744260262012901	TROUGHED BELT CONV.	1.00	.0	.0	.0	.0	.0	.0	.0	.0	.0	8.0	8.0
744260263016982	TROUGHED BELT CONV.	2.00	.0	.0	.0	.0	.0	.0	.0	.0	.0	320.0	320.0
744260263017992	TROUGHED BELT CONV.	2.00	.0	.0	.0	.0	.0	.0	.0	.0	.0	420.0	420.0
744260263016982	TROUGHED BELT CONV.	1.00	.0	.0	.0	.0	.0	.0	.0	.0	.0	350.0	350.0
744260273013942	TROUGHED BELT CONV.	10.00	.0	.0	.0	.0	.0	.0	.0	.0	.0	150.0	150.0
744260273015992	TROUGHED BELT CONV.	4.00	.0	.0	.0	.0	.0	.0	.0	.0	.0	2200.0	2200.0
744260280014962	TROUGHED BELT CONV.	5.00	.0	.0	.0	.0	.0	.0	.0	.0	.0	175.0	175.0
744260284017952	TROUGHED BELT CONV.	2.00	.0	.0	.0	.0	.0	.0	.0	.0	.0	400.0	400.0
74426143013931	CARTYPE - PAL CONV.	1.00	.0	.0	.0	.0	16.0	.0	.0	.0	.0	.0	16.0
744261473013931	CARTYPE - PAL CONV.	1.00	.0	.0	.0	.0	17.0	.0	.0	.0	.0	.0	17.0
744267233011722	BELT FEEDER	3.00	.0	.0	.0	.0	.0	.0	.0	.0	.0	135.0	135.0
744267244011722	APRON FEEDER	3.00	.0	.0	.0	.0	.0	.0	.0	.0	.0	90.0	90.0
744267542012931	VIBRATORY FEEDER	2.00	.0	.0	.0	.0	14.4	.0	.0	.0	.0	.0	14.4
744267543013941	VIBRATORY FEEDER	1.00	.0	.0	.0	.0	16.7	.0	.0	.0	.0	.0	16.7
744267573012941	VIBRATORY FEEDER	1.00	.0	.0	.0	.0	8.0	.0	.0	.0	.0	.0	8.0
744268065016732	ROLLER WHEEL FEEDER	1.00	.0	.0	.0	.0	.0	.0	.0	.0	.0	10.0	10.0
744266122011722	WEIGHT FEEDER	5.00	.0	.0	.0	.0	.0	.0	.0	.0	.0	125.0	125.0
744268123011732	WEIGHT FEEDER	3.00	.0	.0	.0	.0	.0	.0	.0	.0	.0	135.0	135.0

TOTAL : 522.00 .00 .00 1544.00 792.00 1589.70 348.00 33.40 511.00 8995.60 10412.50 30227.40

UN100-SP0CT.0.C.1.1

COMMUNITY CODE : 2301-1

CAPITAL GOODS DEVELOPMENT PROJECT IN TURKEY

MACHINERY REQUIREMENT FOR F.C.C.I. WEIGHT IN TONS

SIC CODE	BASIC MACHINE NAME	QTY	1991	1992	1993	1994	1995	1996	1997	1998	1999	2000	TOTAL
723410043004942	BULLDOZER	2.00	.0	60.0	210.0	.0	.0	.0	.0	.0	.0	.0	270.0
723411037013932	LEVELLER OR GRADER	2.00	.0	15.0	60.0	.0	.0	15.0	.0	.0	.0	.0	90.0
723420032423942	****	9.00	.0	38.0	133.0	.0	.0	19.0	.0	.0	.0	.0	190.0
723420134425782	FRONT END LOADER	1.00	.0	.0	.0	.0	.0	110.0	.0	.0	.0	.0	110.0
723421045124722	ROCK CRUSHER	2.00	.0	.0	.0	.0	.0	.0	.0	.0	.0	1330.0	1330.0
723430131522722	ROTARY BLASTHOLE DR.	4.00	32.0	.0	.0	.0	.0	.0	.0	.0	.0	.0	32.0
723430134122942	ROTARY BLASTHOLE DR.	3.00	.0	12.0	40.0	.0	.0	5.0	.0	.0	.0	.0	64.0
723430362524742	OTH BLASTHOLE DR.	3.00	.0	.0	.0	.0	.0	95.0	.0	.0	.0	.0	95.0
728310636011912	VIBRATING SCREEN	4.00	.0	.0	.0	.0	.0	.0	.0	25.4	.0	.0	25.4
728310657012921	VIBRATING SCREEN	4.00	.0	.0	.0	.0	.0	.0	.0	16.0	.0	.0	16.0
728310659011231	VIBRATING SCREEN	1.00	3.0	.0	.0	.0	.0	.0	.0	.0	.0	.0	3.0
728310659012332	VIBRATING SCREEN	2.00	.0	.0	.0	.0	.0	.0	.0	7.2	.0	.0	7.2
728313250021912	ELEC. STAT. MAGNET SEP	5.00	.0	.0	.0	.0	16.5	.0	.0	.0	.0	.0	16.5
728313250031912	ELEC. STAT. MAGNET SEP	9.00	.0	.0	.0	.0	.0	.0	.0	45.2	.0	.0	45.2
728320224123001	JAW CRUSHER	1.00	10.0	.0	.0	.0	.0	.0	.0	.0	.0	.0	10.0
741210015051712	HOR. FIRING BURNERS	1.00	.0	.6	.6	.0	.0	.0	.0	.0	.0	.0	.6
742200111621612	SECT. STAT. PUMP (CIRCU)	7.00	.0	.0	15.5	.0	.0	.0	.0	.0	.0	.0	15.5
742400133611712	EJECTOR PUMPS	1.00	.0	.0	1.2	.0	.0	.0	.0	.0	.0	.0	1.2
743121243111511	MULTI-STAGE	20.00	.0	.0	51.5	.0	.0	.0	.0	.0	.0	.0	51.5
743122502131212	WATER-RING ROTARY	5.00	.0	.0	58.9	.0	.0	.0	.0	.0	.0	.0	58.9
743131213131312	CENT. COMP. MULTI-ST	10.00	.0	.0	.0	.0	.0	.0	.0	.0	.0	.0	.0
743410225111912	RADIAL FAN(COOR. SUB)	2.00	.0	.0	.0	.0	.0	.0	.0	.0	.0	.0	.0
743410235111911	****	1.00	.0	.0	.0	.0	.0	.0	.0	.0	.0	32.0	32.0
7434103611114922	RADIAL FAN(COOR. SUB)	2.00	.0	.0	.0	.0	.0	.0	.0	.0	.0	29.0	29.0
743411034134922	AXIAL FAN	1.00	.0	.0	.0	.0	.0	.0	.0	.0	.0	.0	.0
744110240036932	DUMP TRUCK	21.00	.0	200.0	275.0	.0	.0	50.0	.0	.0	.0	.0	525.0
744112054004742	DUMP TRUCK	19.00	.0	.0	.0	.0	.0	733.4	.0	.0	.0	.0	733.4
7442602630192	TROUGHED BELT CONV.	31.00	.0	.0	.0	.0	25.0	.0	.0	.0	.0	.0	25.0
744263111111222	MUCKEL ELEVATOR	2.00	.0	.0	.0	.0	.0	.0	.0	5.0	.0	.0	5.0
744267541011922	VIBRATORY FEEDER	1.00	.0	.0	3.5	.0	.0	.0	.0	.0	.0	.0	3.5
744267541012922	VIBRATORY FEEDER	2.00	.0	.0	.0	.0	28.0	.0	.0	.0	.0	.0	28.0
744267561012900	VIBRATORY FEEDER	2.00	.0	.0	.0	.0	25.0	.0	.0	.0	.0	.0	25.0
TOTAL		205.00	104.00	324.30	444.70	100.00	177.50	1031.40	10.00	99.20	10.00	1433.20	5800.00

R

744111064003732	AN 50 TRUCK	3.00	.0	.0	.0	.0	.0	.0	.0	.0	158.7	.0	158.7
744112022003742	DUMP TRUCK	19.00	.0	.0	1400.0	.0	.0	.0	.0	.0	.0	.0	1400.0
744112024003732	DUMP TRUCK	32.00	.0	.0	1100.0	.0	.0	330.0	.0	110.0	.0	.0	1540.0
744112034003742	DUMP TRUCK	3.00	.0	.0	.0	.0	.0	.0	.0	.0	1200.0	.0	1200.0
744112046004942	DUMP TRUCK	27.00	.0	.0	.0	.0	5750.0	.0	.0	.0	.0	.0	5750.0
744112055004962	DUMP TRUCK	41.00	.0	.0	.0	.0	.0	.0	.0	.0	13413.0	.0	13413.0
744260111011921	FLAT BELT CONVEYER	1.00	.0	.0	.0	.0	16.6	.0	.0	.0	.0	.0	16.6
744260111012921	FLAT BELT CONVEYER	2.00	.0	.0	.0	.0	118.1	.0	.0	.0	.0	.0	118.1
744260112013921	FLAT BELT CONVEYER	1.00	.0	.0	.0	.0	64.7	.0	.0	.0	.0	.0	64.7
744260122013921	FLAT BELT CONVEYER	1.00	.0	.0	.0	.0	64.4	.0	.0	.0	.0	.0	64.4
744260132011911	FLAT BELT CONVEYER	4.00	.0	.0	.0	.0	25.7	.0	.0	.0	.0	.0	25.7
744260132012921	FLAT BELT CONVEYER	4.00	.0	.0	.0	.0	171.8	.0	.0	.0	.0	.0	171.8
744260143012930	FLAT BELT CONVEYER	1.00	.0	.0	.0	.0	395.6	.0	.0	.0	.0	.0	395.6
744260143013900	FLAT BELT CONVEYER	2.00	.0	.0	.0	.0	102.9	.0	.0	.0	.0	.0	102.9
744260163013900	FLAT BELT CONVEYER	1.00	.0	.0	.0	.0	75.3	.0	.0	.0	.0	.0	75.3
744260173011910	FLAT BELT CONVEYER	1.00	.0	.0	.0	.0	10.7	.0	.0	.0	.0	.0	10.7
744260173011921	FLAT BELT CONVEYER	1.00	.0	.0	.0	.0	16.0	.0	.0	.0	.0	.0	16.0
744260173013931	FLAT BELT CONVEYER	1.00	.0	.0	.0	.0	96.6	.0	.0	.0	.0	.0	96.6
744260173017931	FLAT BELT CONVEYER	1.00	.0	.0	.0	.0	1135.9	.0	.0	.0	.0	.0	1135.9
744260243013941	TROUGHED BELT CONV.	15.00	.0	.0	.0	.0	.0	.0	.0	.0	.0	525.0	525.0
744260243019992	TROUGHED BELT CONV.	2.00	.0	.0	.0	.0	.0	.0	.0	.0	.0	560.0	560.0
744260253014962	TROUGHED BELT CONV.	1.00	.0	.0	.0	.0	.0	.0	.0	.0	.0	1050.0	1050.0
744260262012901	TROUGHED BELT CONV.	1.00	.0	.0	.0	.0	.0	.0	.0	.0	.0	24.0	24.0
744260263016982	TROUGHED BELT CONV.	2.00	.0	.0	.0	.0	.0	.0	.0	.0	.0	1280.0	1280.0
744260263017992	TROUGHED BELT CONV.	2.00	.0	.0	.0	.0	.0	.0	.0	.0	.0	1530.0	1530.0
744260263018992	TROUGHED BELT CONV.	1.00	.0	.0	.0	.0	.0	.0	.0	.0	.0	1400.0	1400.0
744260273013942	TROUGHED BELT CONV.	10.00	.0	.0	.0	.0	.0	.0	.0	.0	.0	562.5	562.5
744260274019962	TROUGHED BELT CONV.	4.00	.0	.0	.0	.0	.0	.0	.0	.0	.0	880.0	880.0
744260280014962	TROUGHED BELT CONV.	5.00	.0	.0	.0	.0	.0	.0	.0	.0	.0	656.2	656.2
744260284017982	TROUGHED BELT CONV.	2.00	.0	.0	.0	.0	.0	.0	.0	.0	.0	1600.0	1600.0
744261443013931	CARTYPE - PAL CONV.	1.00	.0	.0	.0	.0	90.5	.0	.0	.0	.0	.0	90.5
744261473013931	CARTYPE - PAL CONV.	1.00	.0	.0	.0	.0	101.9	.0	.0	.0	.0	.0	101.9
744267233011722	BELT FEEDER	3.00	.0	.0	.0	.0	.0	.0	.0	.0	.0	60.7	60.7
744267240011752	APRON FEEDER	3.00	.0	.0	.0	.0	.0	.0	.0	.0	.0	337.0	337.0
744267542012931	VIBRATORY FEEDER	2.00	.0	.0	.0	.0	148.2	.0	.0	.0	.0	.0	148.2
744267543013941	VIBRATORY FEEDER	1.00	.0	.0	.0	.0	166.8	.0	.0	.0	.0	.0	166.8
744267573012941	VIBRATORY FEEDER	1.00	.0	.0	.0	.0	92.7	.0	.0	.0	.0	.0	92.7
744268065018732	ROLLER WHEEL FEEDER	1.00	.0	.0	.0	.0	.0	.0	.0	.0	.0	40.0	40.0
744268122011722	WEIGHT FEEDER	5.00	.0	.0	.0	.0	.0	.0	.0	.0	.0	56.2	56.2
744268123011732	WEIGHT FEEDER	3.00	.0	.0	.0	.0	.0	.0	.0	.0	.0	61.7	61.7

TOTAL : 578.00 .00 .00 5670.00 6135.60 12092.00 2371.90 565.40 1477.70 38421.00 58612.30 125352.90

UNIT: SPECI.D.C.I.)

COMMODITY CODE : 23011

CAPITAL GOODS DEVELOPMENT PROJECT IN TURKEY

MACHINERY REPAIR MATERIALS VALUE IN 1990 US\$

SITC CODE	BASIC MACHINE NAME	UNIT	1991	1992	1993	1994	1995	1996	1997	1998	1999	2000	TOTAL
723410043024942	BULLDOZER	2.00	.0	400.0	1500.0	.0	.0	.0	.0	.0	.0	.0	1900.0
723411037013932	LEVELLER DR GRADER	6.00	.0	80.0	320.0	.0	.0	30.0	.0	.0	.0	.0	480.0
723420032423942	****	72.00	.0	260.0	780.0	.0	.0	150.0	.0	.0	.0	.0	1170.0
723420134421762	FRONT END LOADER	1.00	.0	.0	.0	.0	.0	620.0	.0	.0	.0	.0	620.0
723421045421772	PAVING MACHINE	2.00	.0	.0	.0	.0	.0	.0	.0	.0	.0	5120.0	5120.0
723430131322722	ROTARY PLASTHOLE DR.	4.00	160.0	.0	.0	.0	.0	.0	.0	.0	.0	.0	160.0
7234301336422942	ROTARY PLASTHOLE DR.	3.00	.0	50.0	150.0	.0	.0	40.0	.0	.0	.0	.0	140.0
723430362524742	OTH PLASTHOLE DR.	3.00	.0	.0	.0	.0	.0	60.0	.0	.0	.0	.0	60.0
7283106530011912	VIBRATING SCREEN	4.00	.0	.0	.0	.0	.0	.0	.0	149.5	.0	.0	149.5
728310657012921	VIBRATING SCREEN	4.00	.0	.0	.0	.0	.0	.0	.0	27.6	.0	.0	27.6
728310659011931	VIBRATING SCREEN	1.00	30.0	.0	.0	.0	.0	.0	.0	.0	.0	.0	30.0
728310659012332	VIBRATING SCREEN	2.00	.0	.0	.0	.0	.0	.0	.0	24.1	.0	.0	24.1
728313250021912	ELEC. STAT. MAGNET SEP.	3.00	.0	.0	.0	.0	18.3	.0	.0	.0	.0	.0	18.3
728313250031912	ELEC. STAT. MAGNET SEP.	3.00	.0	.0	.0	.0	.0	.0	.0	121.8	.0	.0	121.8
728320224123001	JAW CRUSHER	1.00	40.0	.0	.0	.0	.0	.0	.0	.0	.0	.0	40.0
741210015051712	HOR. FIRING BURNERS	1.00	.0	.0	3.4	.0	.0	.0	.0	.0	.0	.0	3.4
742200111821612	SEAL PUMP (CIRCU)	7.00	.0	.0	20.7	.0	.0	.0	.0	.0	.0	.0	20.7
742400133611712	EJECTOR PUMPS	1.00	.0	.0	13.6	.0	.0	.0	.0	.0	.0	.0	13.6
743121243111611	MULCH-SIARE	25.00	.0	.0	241.4	.0	.0	.0	.0	.0	.0	.0	241.4
743122352131212	WATER-RING ROTARY	2.00	.0	.0	148.0	.0	.0	.0	.0	.0	.0	.0	148.0
743131213131312	CENT. COMP. MILL SI	10.00	.0	.0	.0	.0	.0	.0	.0	.0	.0	.0	.0
743410225111912	RADIAL FAN (CUB. SUC)	2.00	.0	.0	.0	.0	.0	.0	.0	.0	.0	35.6	35.6
743410235111911	****	1.00	.0	.0	.0	.0	.0	.0	.0	.0	.0	3.6	3.6
7434103611114922	RADIAL FAN (CUB. SUC)	2.00	.0	.0	.0	.0	.0	.0	.0	.0	.0	127.0	127.0
743411034134922	AXIAL FLOW FAN	1.00	.0	.0	.0	.0	.0	.0	.0	.0	.0	70.6	70.6
744112024003932	DUMP TRUCK	21.60	.0	330.0	1210.0	.0	.0	220.0	.0	.0	.0	.0	2310.0
744112024004742	DUMP TRUCK	12.11	.0	.0	.0	.0	.0	503.8	.0	.0	.0	.0	503.8
744260263019922	ROUGHED BELT CO.V.	31.00	.0	.0	.0	.0	5923.0	.0	.0	.0	.0	.0	5923.0
744265111011922	BUCKET ELEVATOR	2.00	.0	.0	.0	.0	.0	.0	.0	46.6	.0	.0	46.6
744267541011922	VIBRATORY FEEDER	1.00	.0	.0	15.2	.0	.0	.0	.0	.0	.0	.0	15.2
744267541012922	VIBRATORY FEEDER	2.00	.0	.0	.0	.0	63.0	.0	.0	.0	.0	.0	63.0
744267581012922	VIBRATORY FEEDER	2.00	.0	.0	.0	.0	63.0	.0	.0	.0	.0	.0	63.0
TOTAL :	206.00	230.00	1750.00	4517.30	.00	7157.30	7715.00	.00	369.60	.00	5557.00	26756.20	

744260273013942	19 DRUMMED BELT CONV.	15	15,000	.00	.00	.00	.00	.00	.00	.00	.00	.00	.00	.00	.00	150.00	150.00
744260274014992	19 DRUMMED BELT CONV.	4	50,000	.00	.00	.00	.00	.00	.00	.00	.00	.00	.00	.00	.00	200.00	200.00
744260275014982	19 DRUMMED BELT CONV.	2	35,000	.00	.00	.00	.00	.00	.00	.00	.00	.00	.00	.00	.00	175.00	175.00
744260276014982	19 DRUMMED BELT CONV.	2	20,000	.00	.00	.00	.00	.00	.00	.00	.00	.00	.00	.00	.00	400.00	400.00
744267734011722	APRON FEEDER	5	25,000	.00	.00	.00	.00	.00	.00	.00	.00	.00	.00	.00	.00	135.00	135.00
744267404014702	APRON FEEDER	3	30,000	.00	.00	.00	.00	.00	.00	.00	.00	.00	.00	.00	.00	70.00	70.00
744260265016732	ROLLER WHEEL FEEDER	1	10,000	.00	.00	.00	.00	.00	.00	.00	.00	.00	.00	.00	.00	10.00	10.00
744261812011722	WEIGHT FEEDER	5	25,000	.00	.00	.00	.00	.00	.00	.00	.00	.00	.00	.00	.00	125.00	125.00
744268123011732	WEIGHT FEEDER	3	45,000	.00	.00	.00	.00	.00	.00	.00	.00	.00	.00	.00	.00	135.00	135.00
	PLATE FABRICATED MACHINES		0.00	0.00	0.00	0.00	0.00	0.00	0.00	0.00	0.00	0.00	0.00	0.00	0.00	9325.00	9325.00
			0.00	0.00	0.00	0.00	0.00	0.00	0.00	0.00	0.00	0.00	0.00	0.00	0.00	8716,8015767,6024464,40	
	TOTAL		0.00	0.00	0.00	0.00	0.00	0.00	0.00	0.00	0.00	0.00	0.00	0.00	0.00	8716,8025093,4033810,20	

744260273013942	TROUGHED BELT CONV.	17	56.250	.00	.00	.00	.00	.00	.00	.00	.00	.00	.00	562.50	562.50
744260274014902	TROUGHED BELT CONV.	4	2300.000	.00	.00	.00	.00	.00	.00	.00	.00	.00	.00	9200.00	9200.00
744260280114912	TROUGHED BELT CONV.	5	131.250	.00	.00	.00	.00	.00	.00	.00	.00	.00	.00	656.25	656.25
744260284011792	TROUGHED BELT CONV.	7	800.000	.00	.00	.00	.00	.00	.00	.00	.00	.00	.00	1600.00	1600.00
744267283011722	BELT FEEDER	3	20.250	.00	.00	.00	.00	.00	.00	.00	.00	.00	.00	60.75	60.75
744267485011752	APRON FEEDER	3	129.000	.00	.00	.00	.00	.00	.00	.00	.00	.00	.00	387.00	387.00
744268785011732	ROLLER WHEEL FEEDER	1	40.000	.00	.00	.00	.00	.00	.00	.00	.00	.00	.00	40.00	40.00
744268122011722	WEIGHT FEEDER	5	11.250	.00	.00	.00	.00	.00	.00	.00	.00	.00	.00	56.25	56.25
744268127011732	WEIGHT FEEDER	3	20.250	.00	.00	.00	.00	.00	.00	.00	.00	.00	.00	60.75	60.75
	PLATE FABRICATED		0.00	0.00	0.00	0.00	0.00	0.00	0.00	0.00	0.00	0.00	0.00	C.0014312.0614312.06	
	MACHINES		0.00	0.00	0.00	0.00	0.00	0.00	0.00	0.00	0.00	0.00	0.00	37221.4756193.9093415.37	
	TOTAL		0.00	0.00	0.00	0.00	0.00	0.00	0.00	0.00	0.00	0.00	0.00	37221.4770505.96	7727.43

UNION-SPECTROCOIL
CAPITAL GOODS DEVELOPMENT PROJECT IN TURKEY

COMMODITY CODE : 2301-1

EQUIPMENT REQUIREMENTS FOR THE NEW DEVICE

PLANT CAPACITY IS QUANTITY OF RAW DRG

LOCATION: MALATYA

ANTICIPATED DATE OF COMMISSIONING : 1993

WEIGHT IN TONS

10201330000211

SITE CODE	BASIC MACHINE NAME	QTY	UNIT WEIGHT	1981	1982	1983	1984	1985	1986	1987	1988	1989	1991	TOTAL
	BULLDOZER	5	31.000	.00	.00	.00	155.00	.00	.00	.00	.00	.00	.00	155.00
	LEVELLER OR GRADER	1	13.000	.00	.00	.00	13.00	.00	.00	.00	.00	.00	.00	13.00
	FRONT END LOADER	2	16.700	.00	.00	.00	.00	.00	.00	33.40	.00	.00	.00	33.40
	FRONT END LOADER	1	42.000	.00	.00	.00	42.00	.00	.00	.00	.00	.00	.00	42.00
	POWER SHOVEL	4	150.000	.00	.00	.00	450.00	.00	.00	.00	.00	.00	450.00	900.00
	ROTARY BLASTHOLE DR.	2	6.000	.00	.00	.00	12.00	.00	.00	.00	.00	.00	.00	12.00
	OTH. BLASTHOLE DR.	4	40.000	.00	.00	.00	120.00	.00	.00	.00	.00	.00	40.00	160.00
	VIBRATING SCREEN	1	6.000	.00	.00	.00	.00	6.00	.00	.00	.00	.00	.00	6.00
	VIBRATING SCREEN	1	5.000	.00	.00	.00	.00	5.00	.00	.00	.00	.00	.00	5.00
	GYR. OR CONE CRUSHER	1	66.000	.00	.00	.00	.00	66.00	.00	.00	.00	.00	.00	66.00
	JAW CRUSHER	1	88.000	.00	.00	.00	.00	88.00	.00	.00	.00	.00	.00	88.00
	LIME FURNACES	13	0.269	.00	.00	.00	5.20	.00	.00	.00	.00	.00	.00	5.20
	SCREW COMPRESSOR	1	1.500	.00	.00	.00	.00	1.50	.00	.00	.00	.00	.00	1.50
	AXIAL FLOW BLOWER	9	7.000	.00	.00	.00	.00	63.00	.00	.00	.00	.00	.00	63.00
	DUMP TRUCK	27	32.500	.00	.00	.00	.00	877.50	.00	.00	.00	.00	.00	877.50
	FLAT BELT CONVEYER	1	4.000	.00	.00	.00	.00	4.00	.00	.00	.00	.00	.00	4.00
	FLAT BELT CONVEYER	1	6.000	.00	.00	.00	.00	6.00	.00	.00	.00	.00	.00	6.00
	FLAT BELT CONVEYER	1	15.000	.00	.00	.00	.00	15.00	.00	.00	.00	.00	.00	15.00
	FLAT BELT CONVEYER	1	16.000	.00	.00	.00	.00	16.00	.00	.00	.00	.00	.00	16.00
	FLAT BELT CONVEYER	1	11.000	.00	.00	.00	.00	10.00	.00	.00	.00	.00	.00	10.00
	FLAT BELT CONVEYER	2	1.300	.00	.00	.00	.00	2.60	.00	.00	.00	.00	.00	2.60
	FLAT BELT CONVEYER	2	1.500	.00	.00	.00	.00	3.00	.00	.00	.00	.00	.00	3.00
	FLAT BELT CONVEYER	2	2.500	.00	.00	.00	.00	5.00	.00	.00	.00	.00	.00	5.00
	FLAT BELT CONVEYER	2	3.500	.00	.00	.00	.00	17.00	.00	.00	.00	.00	.00	17.00
	FLAT BELT CONVEYER	1	8.500	.00	.00	.00	.00	8.50	.00	.00	.00	.00	.00	8.50
	FLAT BELT CONVEYER	1	16.000	.00	.00	.00	.00	16.00	.00	.00	.00	.00	.00	16.00
	FLAT BELT CONVEYER	1	15.000	.00	.00	.00	.00	15.00	.00	.00	.00	.00	.00	15.00
	FLAT BELT CONVEYER	1	18.000	.00	.00	.00	.00	18.00	.00	.00	.00	.00	.00	18.00
	FLAT BELT CONVEYER	1	1.500	.00	.00	.00	.00	1.50	.00	.00	.00	.00	.00	1.50
	FLAT BELT CONVEYER	1	2.000	.00	.00	.00	.00	2.00	.00	.00	.00	.00	.00	2.00
	FLAT BELT CONVEYER	1	20.000	.00	.00	.00	.00	20.00	.00	.00	.00	.00	.00	20.00
	FLAT BELT CONVEYER	1	250.000	.00	.00	.00	.00	250.00	.00	.00	.00	.00	.00	250.00
	CARTYPE PAL. CONV.	1	15.000	.00	.00	.00	.00	15.00	.00	.00	.00	.00	.00	15.00
	CARTYPE PAL. CONV.	1	17.000	.00	.00	.00	.00	17.00	.00	.00	.00	.00	.00	17.00
	VIBRATORY FEEDER	1	7.200	.00	.00	.00	.00	7.20	.00	.00	.00	.00	.00	7.20
	VIBRATORY FEEDER	1	7.200	.00	.00	.00	.00	7.20	.00	.00	.00	.00	.00	7.20
	VIBRATORY FEEDER	1	16.700	.00	.00	.00	.00	16.70	.00	.00	.00	.00	.00	16.70
	VIBRATORY FEEDER	1	8.000	.00	.00	.00	.00	8.00	.00	.00	.00	.00	.00	8.00
	PLATE FABRICATED		0.00	0.00	0.00	5.20	0.00	0.00	0.00	0.00	0.00	0.00	0.00	5.20
	MACHINES		0.00	0.00	0.00	792.00	1549.70	0.00	33.40	0.00	0.00	490.00	295.00	295.00
	TOTAL		0.00	0.00	0.00	797.20	1549.70	0.00	33.40	0.00	0.00	490.00	295.00	2919.30

UNIDOC-SPROCT.O.C.I.S.
CAPITAL GOODS DEVELOPMENT PROJECT IN THRU V
EQUIPMENT REQUIREMENTS FOR THE NEW DEVECI

COMMODITY CODE : 2301-1
PLANT CAPACITY 130000017Y OF BA-DRE

LOCATION: MALATYA
ANTICIPATED DATE OF COMMISSIONING : 1993
VALUE IN US \$ (1000)

10211700099221

SITC CODE	BASIC MACHINE NAME	QTY	UNIT COST	1981	1982	1983	1984	1985	1986	1987	1988	1989	1990	TOTAL
72341000000242	SPLITTER	5	222.000	.00	.00	.00	1110.00	.00	.00	.00	.00	.00	.00	1110.00
72341000000372	DRUMBLE OR GRADER	1	114.000	.00	.00	.00	114.00	.00	.00	.00	.00	.00	.00	114.00
72341000000422	FRONT END LOADER	2	282.500	.00	.00	.00	.00	.00	.00	565.43	.00	.00	.00	565.43
72341000000512	FRONT END LOADER	1	727.000	.00	.00	.00	297.00	.00	.00	.00	.00	.00	.00	297.00
72341000000602	WALK BEVEL	4	92.700	.00	.00	.00	2841.00	.00	.00	.00	.00	.00	.00	2841.00
72341000000722	ROTARY BLASTHOLE DR	2	141.000	.00	.00	.00	282.00	.00	.00	.00	.00	.00	.00	282.00
723430168514942	DRUM BLASTHOLE DR	4	497.000	.00	.00	.00	191.00	.00	.00	.00	.00	.00	.00	191.00
723510656012921	VIBRATING SCREEN	1	52.800	.00	.00	.00	.00	92.80	.00	.00	.00	.00	.00	92.80
72351060012921	VIBRATING SCREEN	1	52.800	.00	.00	.00	.00	92.80	.00	.00	.00	.00	.00	92.80
723520124415672	DRUM CONE CRUSHER	1	746.000	.00	.00	.00	.00	746.00	.00	.00	.00	.00	.00	746.00
723520066315672	JAW CRUSHER	1	746.000	.00	.00	.00	.00	746.00	.00	.00	.00	.00	.00	746.00
74313232101921	LIME FURNACES	18	69.119	.00	.00	.00	1243.98	.00	.00	.00	.00	.00	.00	1243.98
74313232101311	SCREW COMPRESSOR	1	34.000	.00	.00	.00	.00	34.00	.00	.00	.00	.00	.00	34.00
743420051112931	AXIAL FLOW PUMPER	6	69.119	.00	.00	.00	.00	222.71	.00	.00	.00	.00	.00	222.71
744112046004242	PUMP TRUCK	27	251.000	.00	.00	.00	.00	750.00	.00	.00	.00	.00	.00	750.00
744260111011921	FLAT BELT CONVEYER	1	107.400	.00	.00	.00	.00	107.40	.00	.00	.00	.00	.00	107.40
744260111012921	FLAT BELT CONVEYER	1	107.400	.00	.00	.00	.00	107.40	.00	.00	.00	.00	.00	107.40
744260111012921	FLAT BELT CONVEYER	1	84.440	.00	.00	.00	.00	84.44	.00	.00	.00	.00	.00	84.44
7442601112013921	FLAT BELT CONVEYER	1	64.440	.00	.00	.00	.00	64.44	.00	.00	.00	.00	.00	64.44
744260122013921	FLAT BELT CONVEYER	1	64.440	.00	.00	.00	.00	64.44	.00	.00	.00	.00	.00	64.44
744260132011911	FLAT BELT CONVEYER	2	5.450	.00	.00	.00	.00	10.90	.00	.00	.00	.00	.00	10.90
744260132011911	FLAT BELT CONVEYER	2	5.450	.00	.00	.00	.00	10.90	.00	.00	.00	.00	.00	10.90
744260132012921	FLAT BELT CONVEYER	2	42.960	.00	.00	.00	.00	85.92	.00	.00	.00	.00	.00	85.92
744260132012921	FLAT BELT CONVEYER	2	42.960	.00	.00	.00	.00	85.92	.00	.00	.00	.00	.00	85.92
744260132012921	FLAT BELT CONVEYER	1	395.640	.00	.00	.00	.00	395.64	.00	.00	.00	.00	.00	395.64
744260143013900	FLAT BELT CONVEYER	1	75.180	.00	.00	.00	.00	75.18	.00	.00	.00	.00	.00	75.18
744260143013900	FLAT BELT CONVEYER	1	27.810	.00	.00	.00	.00	27.81	.00	.00	.00	.00	.00	27.81
744260143013900	FLAT BELT CONVEYER	1	75.360	.00	.00	.00	.00	75.36	.00	.00	.00	.00	.00	75.36
744260153013900	FLAT BELT CONVEYER	1	10.740	.00	.00	.00	.00	10.74	.00	.00	.00	.00	.00	10.74
744260173011910	FLAT BELT CONVEYER	1	16.040	.00	.00	.00	.00	16.04	.00	.00	.00	.00	.00	16.04
744260173011921	FLAT BELT CONVEYER	1	16.040	.00	.00	.00	.00	16.04	.00	.00	.00	.00	.00	16.04
744260173013931	FLAT BELT CONVEYER	1	95.660	.00	.00	.00	.00	95.66	.00	.00	.00	.00	.00	95.66
744260173017931	FLAT BELT CONVEYER	1	1105.900	.00	.00	.00	.00	1105.90	.00	.00	.00	.00	.00	1105.90
744261443013931	CARTYPE - PALLO.C.V.	1	90.586	.00	.00	.00	.00	90.58	.00	.00	.00	.00	.00	90.58
744261473013931	CARTYPE - PALLO.C.V.	1	101.970	.00	.00	.00	.00	101.97	.00	.00	.00	.00	.00	101.97
744267542012931	VIBRATORY FEEDER	1	74.160	.00	.00	.00	.00	74.16	.00	.00	.00	.00	.00	74.16
744267542012931	VIBRATORY FEEDER	1	74.160	.00	.00	.00	.00	74.16	.00	.00	.00	.00	.00	74.16
744267543013941	VIBRATORY FEEDER	1	166.860	.00	.00	.00	.00	166.86	.00	.00	.00	.00	.00	166.86
744267573012941	VIBRATORY FEEDER	1	92.700	.00	.00	.00	.00	92.70	.00	.00	.00	.00	.00	92.70
	PLATE FABRICATED		0.00	0.00	0.00	1243.98	0.00	0.00	0.00	0.00	0.00	0.00	0.00	1243.98
	MACHINES		0.00	0.00	0.00	6135.60	12100.79	0.00	565.43	0.00	0.00	0.00	0.00	1444.0073745.17
	TOTAL		0.00	0.00	0.00	7379.58	12100.79	0.00	565.43	0.00	0.00	0.00	0.00	1444.0073745.15

CUMMUNITY CODE : 2301-1

UNION-SPOC(I.O.C.I.O.)

CAPITAL GOODS DEVELOPMENT PROJECTS FOR THE NEW AUSTRIA

EQUIPMENT REPAIRS FOR THE NEW AUSTRIA

OPERATIONAL EXPENSES

ANTICIPATED RATE OF COMPLETION : 1993

1994

1995

1996

1997

1998

1999

2000

TOTAL

342.00

342.00

342.00

342.00

342.00

342.00

342.00

342.00

342.00

342.00

342.00

342.00

342.00

342.00

342.00

342.00

342.00

342.00

342.00

342.00

342.00

342.00

342.00

342.00

342.00

342.00

342.00

342.00

342.00

342.00

342.00

342.00

342.00

COMMUNITY CODE 12501-1

PLANT CAPACITY CITY OF RAM ORE

SUBJECT MATTER: CAPITAL BOND DEVELOPMENT PROGRAM IN JUNIATA COLLEGE MATHEMATICS BLDG FOR THE EXPANSION OF LABORATORY FACILITIES

APPROPRIATED VARS OF CAPITAL BOND 1982

1250000000011

ACCOUNT NUMBER	DESCRIPTION	1967	1968	1969	1970	TOTAL
01-101-30-1900	BUDGETER	00	00	00	00	00
20-110-30-1900	EX-CELLER	00	00	00	00	00
02-101-30-1900	FRONT END CHARGE	00	00	00	00	00
05-401-30-1900	ROTARY PLASTER	00	00	00	00	00
08-101-30-1900	OPERATING SUPPLIES	00	00	00	00	00
09-110-30-1900	JAN. CLEANING	00	00	00	00	00
09-112-30-1900	BUSSE TRUCK	00	00	00	00	00
	PLATE ESTIMATED	00	00	00	00	00
	MAINTENANCE	00	00	00	00	00
	TOTAL	00	00	00	00	00

COMMODITY CODE : 2301-1

PLANT CAPACITY CITY OF RAKHURT

UNIT SPECIFICATION
CAPITAL EXPENDITURE PER UNIT EXPANSION VARYING WITH
EQUIPMENT SPECIFICATION
LOCATION: RAKHURT
APPROXIMATE DATE OF COMPLETION : 1990
SCALE IN US \$ (1000)

000000000000000000

ITEM CODE	DESCRIPTION	UNIT	UNIT COST	1983	1984	1985	1986	1987	1988	1989	1990	TOTAL
000000000000000000	WELLHEAD	2	220.000	.00	.00	.00	.00	.00	.00	.00	.00	.00
000000000000000000	FLUVELVE	3	30.000	.00	.00	.00	.00	.00	.00	.00	.00	.00
000000000000000000	FRANK	5	150.000	.00	.00	.00	.00	.00	.00	.00	.00	.00
000000000000000000	SCALE	2	45.000	.00	.00	.00	.00	.00	.00	.00	.00	.00
000000000000000000	VALVE	1	30.000	.00	.00	.00	.00	.00	.00	.00	.00	.00
000000000000000000	VALVE	1	40.000	.00	.00	.00	.00	.00	.00	.00	.00	.00
000000000000000000	PIPE	5	110.000	.00	.00	.00	.00	.00	.00	.00	.00	.00
PLANT SPECIFICATED												
SUBTOTAL												
				0.00	0.00	0.00	0.00	0.00	0.00	0.00	0.00	0.00
				0.00	0.00	0.00	0.00	0.00	0.00	0.00	0.00	0.00
TOTAL				0.00	0.00	0.00	0.00	0.00	0.00	0.00	0.00	0.00

UNITED STATES GOVERNMENT

FORM NO. 1 (REV. 1-79)

CAPITAL SUBSIDY PROGRAM - DEPARTMENT OF ENERGY

EQUIPMENT ACQUISITION FUNDS FOR THE EXP/REP

ACTIVATED-BLIND-C-SATA-TECHNIST

PLANT CAPACITY

QTY OF RA-ORE

LOCATION: SIMAS-TRINIDAD

ANTICIPATED DATE OF COMPLETION: 1990

WEIGHT IN TONS

397000000000/11

UNIT CODE	QTY	UNIT WEIGHT	1981	1982	1983	1984	1985	1986	1987	1988	1989	1990	TOTAL
7234100-3024942	2	30.000	.00	.00	60.00	.00	.00	.00	.00	.00	.00	.00	60.00
723411037013932	1	15.000	.00	.00	15.00	.00	.00	.00	.00	.00	.00	.00	15.00
723430032423942	3	19.000	.00	.00	57.00	.00	.00	57.00	.00	.00	.00	.00	57.00
723430138422942	7	4.000	.00	.00	28.00	.00	.00	.00	.00	.00	.00	.00	28.00
723430659011931	1	3.000	.00	.00	3.00	.00	.00	.00	.00	.00	.00	.00	3.00
7234312230012931	1	6.000	.00	.00	6.00	.00	.00	.00	.00	.00	.00	.00	6.00
723432022412301	1	10.000	.00	.00	10.00	.00	.00	.00	.00	.00	.00	.00	10.00
744112024003932	2	125.000	.00	.00	175.00	.00	.00	25.00	.00	25.00	.00	.00	225.00
		PLATE FABRICATED MACHINES	0.00	0.00	0.00	0.00	0.00	0.00	0.00	0.00	0.00	0.00	0.00
		TOTAL	0.00	0.00	315.00	0.00	0.00	63.00	0.00	25.00	0.00	0.00	403.00

JN100-SPECTRO-C-1-1
 CAPITAL GOODS DEVELOPMENT PROJECT IN TURKEY
 EQUIPMENT REQUIREMENTS FOR THE EXP/REP DIVISION
 LOCATION: SIVAS
 ANTICIPATED DATE OF COMMISSIONING : 1988
 WEIGHT IN TONS

COMMODITY CODE : 2301-1

PLANT CAPACITY 4500000/TY OF RAW ORE

37574600000012

JIC CODE	BASIC MACHINE NAME	QTY	UNIT WEIGHT	1991	1992	1993	1994	1995	1996	1997	1998	1999	2000	TOTAL
72342013442762	****	1	110.000	.00	.00	.00	.00	.00	110.00	.00	.00	.00	.00	110.00
72342104540772	POWER SHOVEL	7	191.000	.00	.00	.00	.00	.00	.00	.00	.00	.00	1330.00	1330.00
723430131522722	ROTARY ELASTHOLE DR.	4	8.000	32.00	.00	.00	.00	.00	.00	.00	.00	.00	.00	32.00
723430324524742	OTH ELASTHOLE DR.	3	32.000	.00	.00	.00	.00	.00	96.00	.00	.00	.00	.00	96.00
723510636011912	VIBRATING SCREEN	4	6.500	.00	.00	.00	.00	.00	.00	.00	26.40	.00	.00	26.40
723510637012921	VIBRATING SCREEN	4	4.000	.00	.00	.00	.00	.00	.00	.00	16.00	.00	.00	16.00
723510659010332	VIBRATING SCREEN	2	3.500	.00	.00	.00	.00	.00	.00	.00	7.20	.00	.00	7.20
723513250021912	ELEC. STAT. MAGNET SEP	6	2.750	.00	.00	.00	.00	16.50	.00	.00	.00	.00	.00	16.50
723513250031912	ELEC. STAT. MAGNET SEP	9	5.000	.00	.00	.00	.00	.00	.00	.00	45.27	.00	.00	45.27
741210015051712	HOR. FIRING BURN RS	1	0.500	.00	.00	.60	.00	.00	.00	.00	.00	.00	.00	.60
742200111321612	S. ST. CENT. PUMP(CIRC)	5	3.050	.00	.00	15.25	.00	.00	.00	.00	.00	.00	.00	15.25
742200111321612	S. ST. CENT. PUMP(CIRC)	2	0.130	.00	.00	.26	.00	.00	.00	.00	.00	.00	.00	.26
742400133811712	EJECTOR PUMPS	1	1.800	.00	.00	1.80	.00	.00	.00	.00	.00	.00	.00	1.80
743121243111511	MULTI-STAGE	25	2.050	.00	.00	51.50	.00	.00	.00	.00	.00	.00	.00	51.50
743122352131212	WATER-RING ROTARY	4	14.725	.00	.00	58.90	.00	.00	.00	.00	.00	.00	.00	58.90
743131213131312	CENT. COMP. MULTI ST	10	1.500	.00	.00	.00	.00	.00	.00	.00	.00	.00	.00	.00
743410225111912	RADIAL FAN(COOL. SUC)	2	7.600	.00	.00	.00	.00	.00	.00	.00	.00	.00	15.20	15.20
743410235111911	RADIAL FAN(COOL. SUC)	1	2.000	.00	.00	.00	.00	.00	.00	.00	.00	.00	2.00	2.00
744140361114922	****	2	26.000	.00	.00	.00	.00	.00	.00	.00	.00	.00	52.00	52.00
7441103413413422	AXIAL FLOW FAN	1	29.000	.00	.00	.00	.00	.00	.00	.00	.00	.00	29.00	29.00
744112504734742	DUMP TRUCK	12	32.500	.00	.00	.00	.00	.00	733.40	.00	.00	.00	.00	733.40
744260263015982	TROUGHED BELT CONV.	31	0.809	.00	.00	.00	.00	25.07	.00	.00	.00	.00	.00	25.07
744265111011222	BUCKET ELEVATOR	2	2.500	.00	.00	.00	.00	.00	.00	.00	5.00	.00	.00	5.00
744267541011922	VIBRATORY FEEDER	1	3.500	.00	.00	3.50	.00	.00	.00	.00	.00	.00	.00	3.50
744267541012922	VIBRATORY FEEDER	2	14.000	.00	.00	.00	.00	28.00	.00	.00	.00	.00	.00	28.00
744267551012922	VIBRATORY FEEDER	2	14.000	.00	.00	.00	.00	28.00	.00	.00	.00	.00	.00	28.00
	PLATE FABRICATED MACHINES		0.00	0.00	0.00	0.00	0.00	0.00	0.00	0.00	0.00	0.00	0.00	0.00
			32.00	0.00	131.31	0.00	97.57	939.40	0.00	99.87	0.00	1429.20	2728.85	
	TOTAL		32.00	0.00	131.31	0.00	97.57	939.40	0.00	99.87	0.00	1429.20	2728.85	

1970-1971

STATE OF MICHIGAN
DEPARTMENT OF REVENUE
DIVISION OF TAXATION
TAXPAYER'S NAME: [Illegible]
ADDRESS: [Illegible]
CITY: [Illegible]

DESCRIPTION	1970	1971	1972	1973	1974	1975	1976	1977	1978	1979	TOTAL
PROPERTY TAX	100.00	100.00	100.00	100.00	100.00	100.00	100.00	100.00	100.00	100.00	1,100.00
SALES TAX	50.00	50.00	50.00	50.00	50.00	50.00	50.00	50.00	50.00	50.00	550.00
INCOME TAX	200.00	200.00	200.00	200.00	200.00	200.00	200.00	200.00	200.00	200.00	2,000.00
UNEMPLOYMENT TAX	10.00	10.00	10.00	10.00	10.00	10.00	10.00	10.00	10.00	10.00	110.00
WAGE TAX	10.00	10.00	10.00	10.00	10.00	10.00	10.00	10.00	10.00	10.00	110.00
INVESTMENT TAX	5.00	5.00	5.00	5.00	5.00	5.00	5.00	5.00	5.00	5.00	55.00
GRAND TOTAL	465.00	465.00	465.00	465.00	465.00	465.00	465.00	465.00	465.00	465.00	5,000.00

STATE OF MICHIGAN
DEPARTMENT OF REVENUE
DIVISION OF TAXATION
TAXPAYER'S NAME: [Illegible]
ADDRESS: [Illegible]
CITY: [Illegible]

1970-1971

41000000001012

UNITED STATES OF AMERICA
CAPITAL DEVELOPMENT PROJECT IN UGANDA
EQUIPMENT REQUIREMENTS FOR REPLACEMENT
QUANTITIES, ADJUSTMENTS, MAJOR
NAME OF PART AND YEAR OF STARTING
WEIGHT IN LBS

COMMODITY CODE : 2301-1

ELMADAGATTMENT-K FOR-KAYA 0600

41000000001012

SILL NO.	BASIC MACHINE NAME	QTY	WEIGHT	1991	1992	1993	1994	1995	1996	1997	1998	1999	TOTAL
723410043024942	BULLDOZER	2	50,000	.00	.00	60.00	.00	.00	.00	.00	.00	.00	60.00
723410037013932	LEVELER OR GRADER	2	15,000	.00	.00	30.00	.00	.00	.00	.00	.00	.00	30.00
723420032421942	TRUCK	2	19,000	.00	.00	38.00	.00	.00	.00	.00	.00	.00	38.00
723450136822942	ROTTOR PASTORIE OR	1	8,000	.00	.00	8.00	.00	.00	.00	.00	.00	.00	8.00
74411024003332	TRUCK	3	25,000	.00	.00	75.00	.00	.00	.00	.00	.00	.00	75.00
	PLATE FURNISHED			0.00	0.00	0.00	0.00	0.00	0.00	0.00	0.00	0.00	0.00
	MACHINES			0.00	211.00	0.00	0.00	0.00	0.00	0.00	0.00	0.00	211.00
	TOTAL			0.00	211.00	0.00	0.00	0.00	0.00	0.00	0.00	0.00	211.00

PROPERTY CODE : 2651-1

UNION PROJECT, D.C.F. -
CAPITAL COSTS DEVELOPMENT PROJECT IN DUCKY
EQUITY AT BEGINNING YEAR FOR REPLACEMENT
LOCATION: SIASA-ZANCA
NAME OF PLANT AND YEAR OF STARTING: AKJAG-1-ALUJIF-C.SAYA-12/1981 0000
WEIGHT IN LBS

41190000701112

SIC CODE	MISC	ALUMINUM	1991	1992	1993	1994	1995	1996	1997	1998	1999	TOTAL
7234100	3024942	FULLCRES	31.000	0.00	120.00	0.00	0.00	0.00	0.00	0.00	0.00	0.00 120.00
7234110	37013932	LEVELLER OR GRADLE	15.000	0.00	15.00	0.00	0.00	0.00	0.00	0.00	0.00	0.00 15.00
7234200	32423572	FRONT END LOADER	15.000	0.00	35.00	0.00	0.00	0.00	0.00	0.00	0.00	0.00 35.00
7234501	36472972	AUTOMATIC BRUSH	5.000	0.00	24.00	0.00	0.00	0.00	0.00	0.00	0.00	0.00 24.00
7441120	4203932	JUMP TRUCK	25.000	0.00	125.00	0.00	0.00	0.00	0.00	0.00	0.00	0.00 125.00
		PLATE FABRICATED	0.00	0.00	0.00	0.00	0.00	0.00	0.00	0.00	0.00	0.00 0.00
		MACHINES	0.00	0.00	322.00	0.00	0.00	0.00	0.00	0.00	0.00	0.00 322.00
		TOTAL	0.00	0.00	322.00	0.00	0.00	0.00	0.00	0.00	0.00	0.00 322.00

