



TOGETHER
for a sustainable future

OCCASION

This publication has been made available to the public on the occasion of the 50th anniversary of the United Nations Industrial Development Organisation.



TOGETHER
for a sustainable future

DISCLAIMER

This document has been produced without formal United Nations editing. The designations employed and the presentation of the material in this document do not imply the expression of any opinion whatsoever on the part of the Secretariat of the United Nations Industrial Development Organization (UNIDO) concerning the legal status of any country, territory, city or area or of its authorities, or concerning the delimitation of its frontiers or boundaries, or its economic system or degree of development. Designations such as “developed”, “industrialized” and “developing” are intended for statistical convenience and do not necessarily express a judgment about the stage reached by a particular country or area in the development process. Mention of firm names or commercial products does not constitute an endorsement by UNIDO.

FAIR USE POLICY

Any part of this publication may be quoted and referenced for educational and research purposes without additional permission from UNIDO. However, those who make use of quoting and referencing this publication are requested to follow the Fair Use Policy of giving due credit to UNIDO.

CONTACT

Please contact publications@unido.org for further information concerning UNIDO publications.

For more information about UNIDO, please visit us at www.unido.org

1974
1000
Jamaica

**JAMAICA PROMOTIONS
CORPORATION
CENTRALIZED DATABASE
FACILITY
SYSTEM DESIGN**

**KPMG PEAT MARWICK & PARTNERS
SEPTEMBER 1993**

**JAMAICA PROMOTIONS CORPORATION
CENTRALISED DATABASE FACILITY**

SYSTEM DESIGN

INTRODUCTION

This document reflects the result of the design phase of this project. Included are the Entity Relationship Diagram, the Dataflow Diagram, the Data Dictionary, the Database Definition, the Screen & Report Layouts and a list of the Error Messages used in the system.

The **Entity Relationship Diagram** indicates the main entities about which data is being gathered, manipulated and reported on in this system.

The **Dataflow Diagram** communicates the movement of data through the system and through the organization. It tells what data is communicated on what document and the different areas that utilize this data.

The **Data Dictionary** as the name implies, lists all the data names used in the system and their meaning as far as this system is concerned.

The **Database Definition** indicates how the database is structured. It names the different tables existing in the database, the structure of these tables and their indexes; and invariably indicating how these tables are linked.

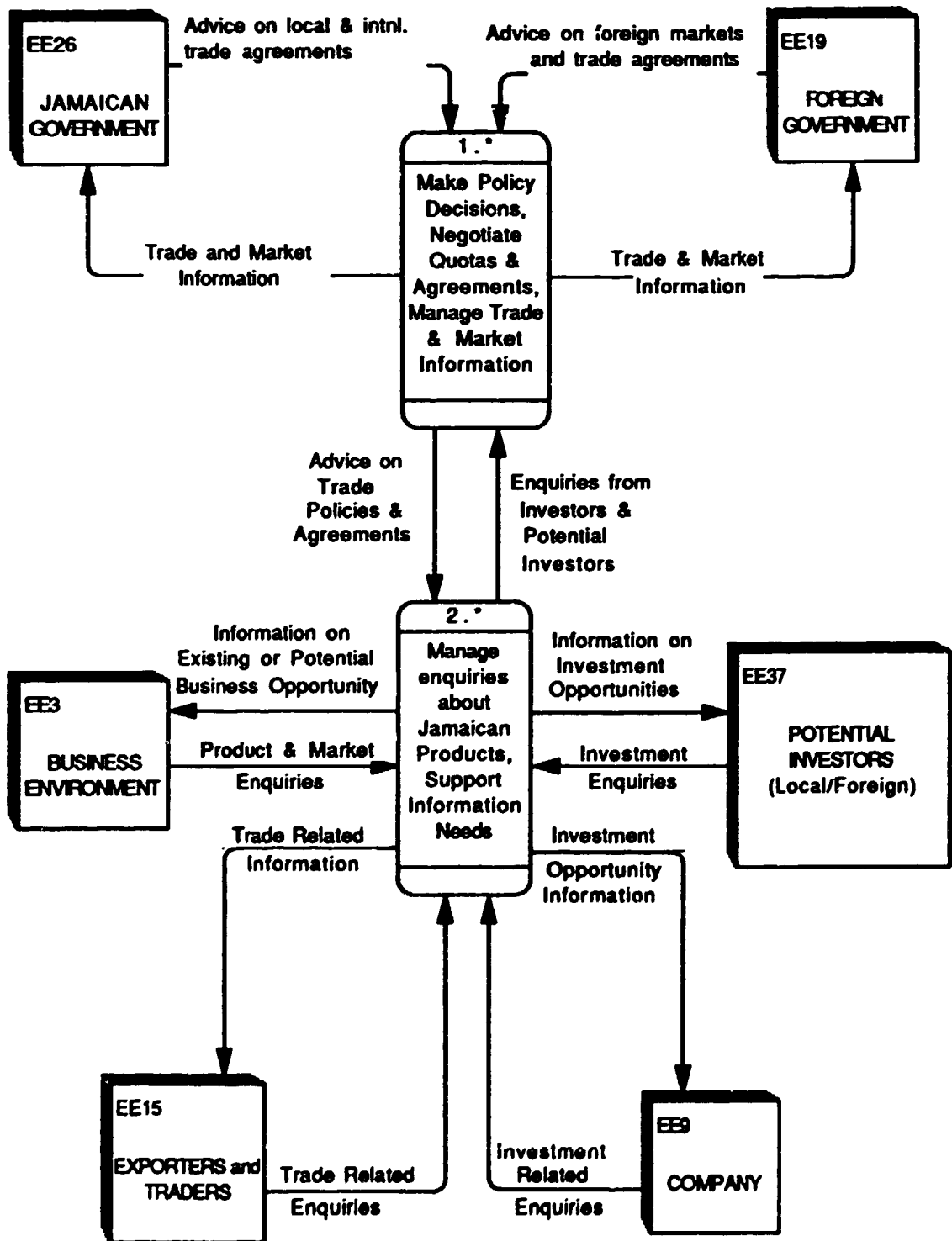
The **Screen & Report Layouts** provides the design of all the entry screens used in the system. Indicating the format of the screen and the data collected on each screen. Additionally, it provides the formats for the printed reports as well.

The Error Message Listing is a list of all the errors reported by the system, with a corresponding error number, as well as a guide as to why the error occurred and how to address the problem.

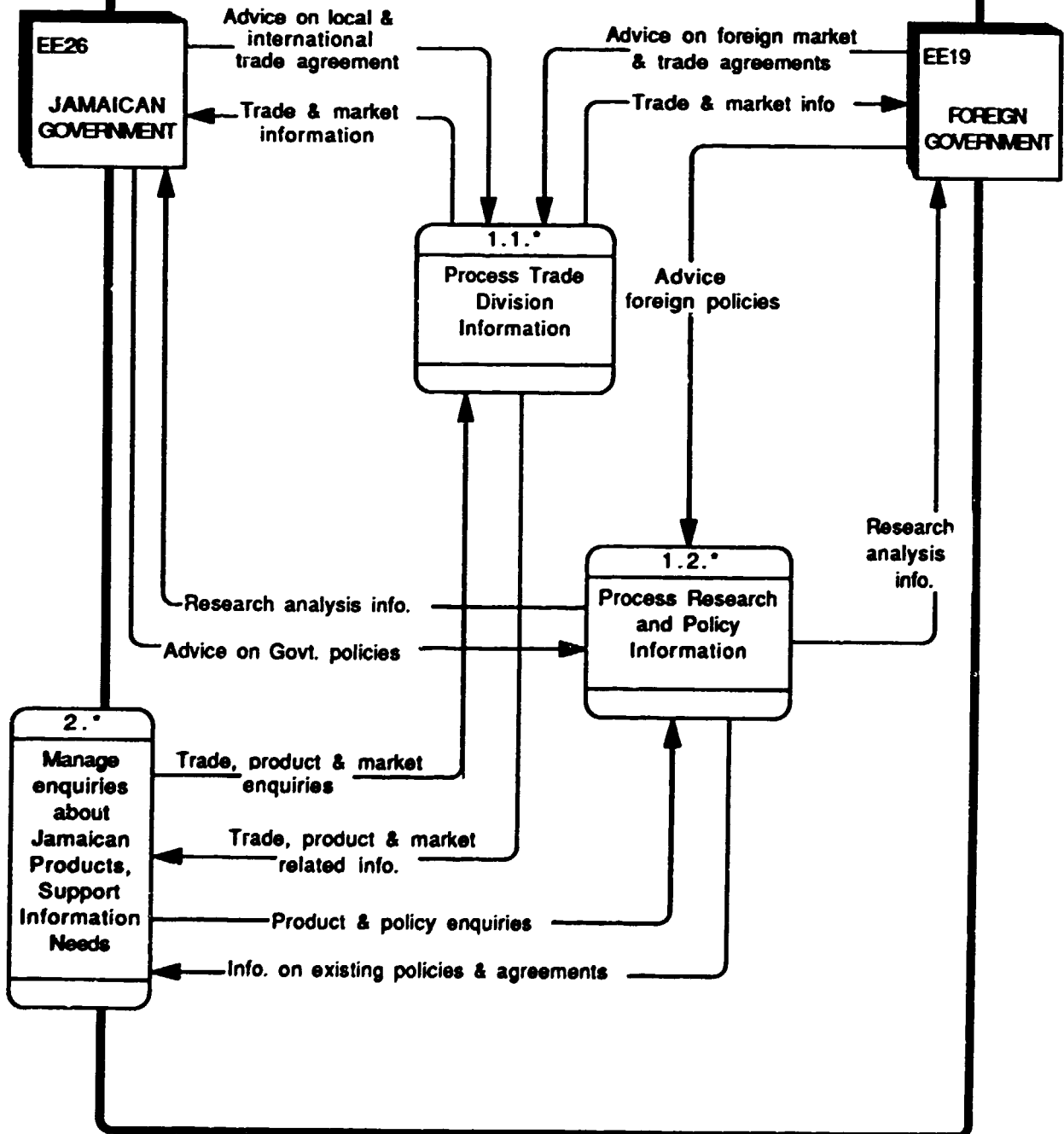
ENTITY RELATIONSHIP DIAGRAM

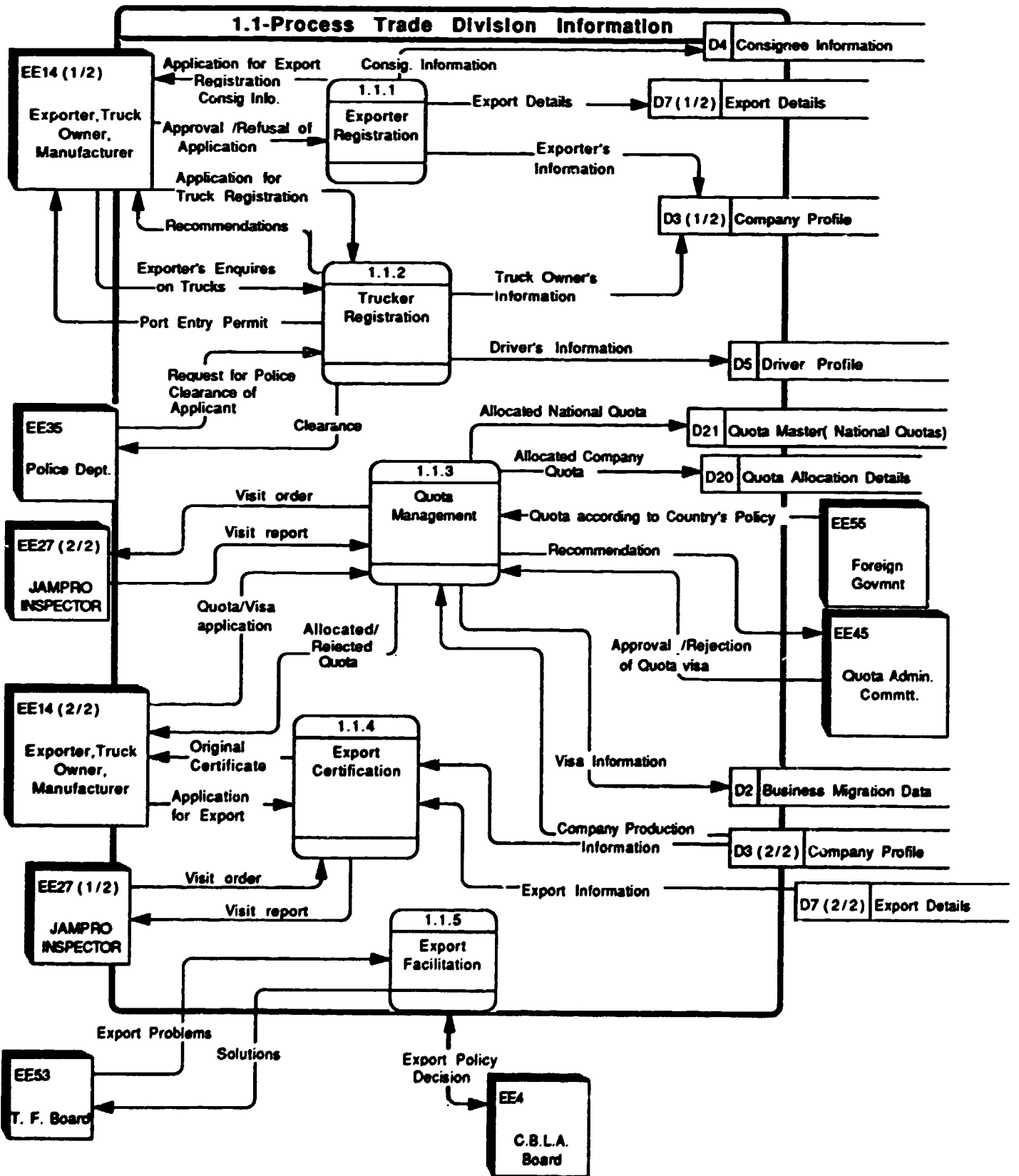
DATA FLOW DIAGRAM

DATAFLOW DIAGRAM - JAMPRO.

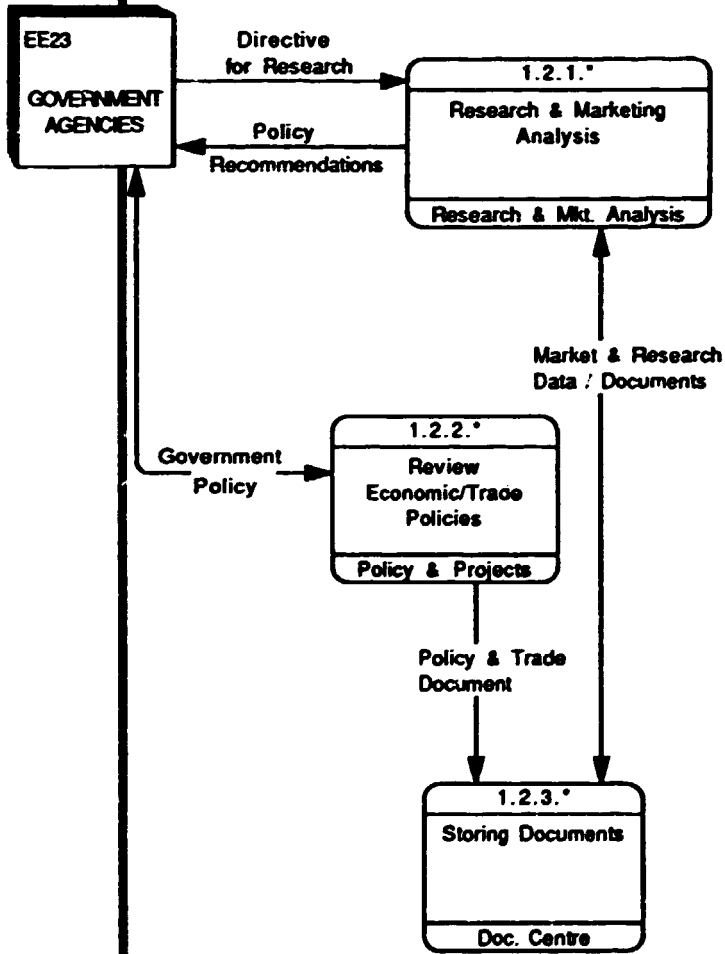


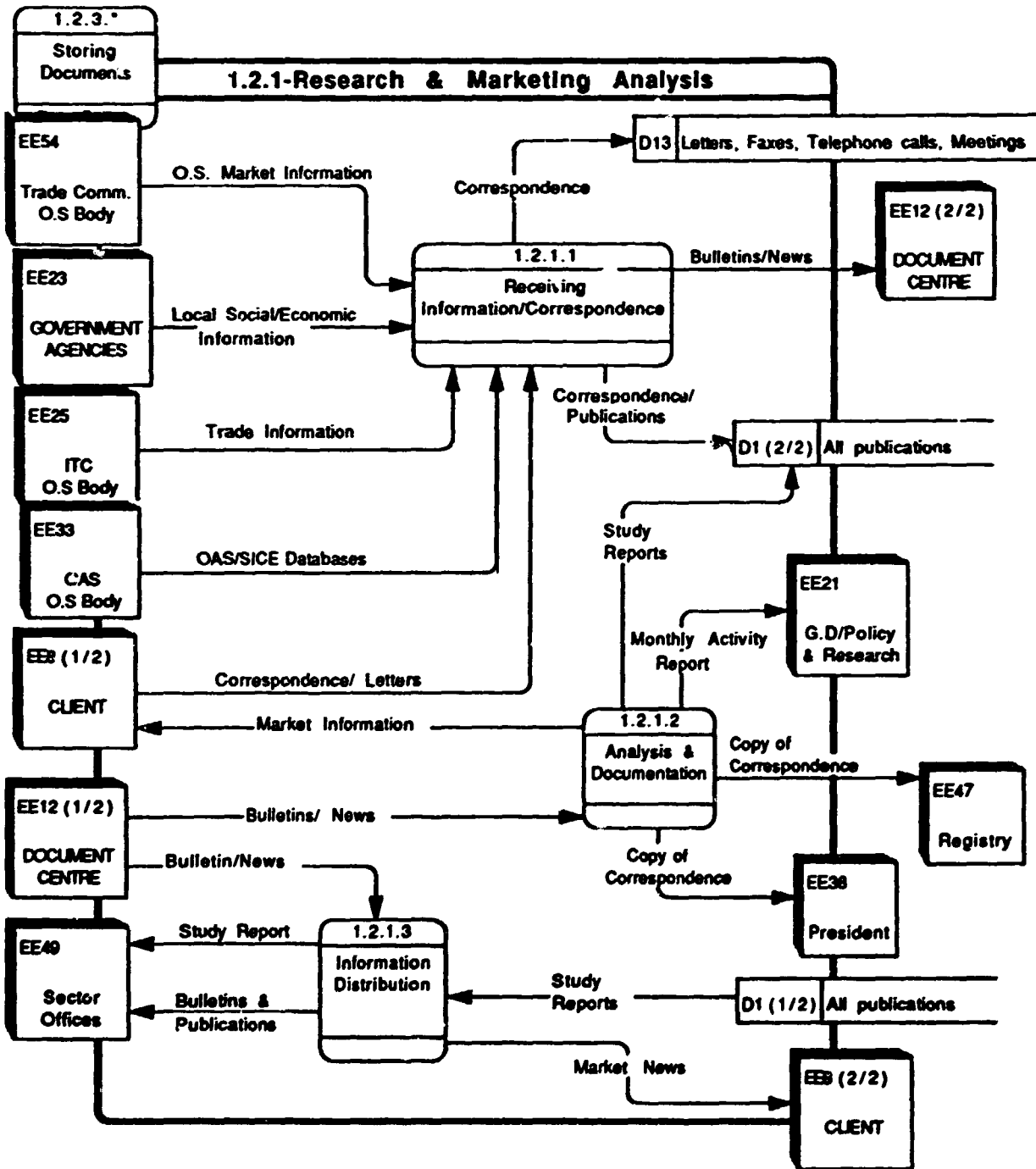
1-Make Policy Decisions, Negotiate Quotas & Agreements, Manage Trade & Market Information





1.2-Process Research and Policy Information

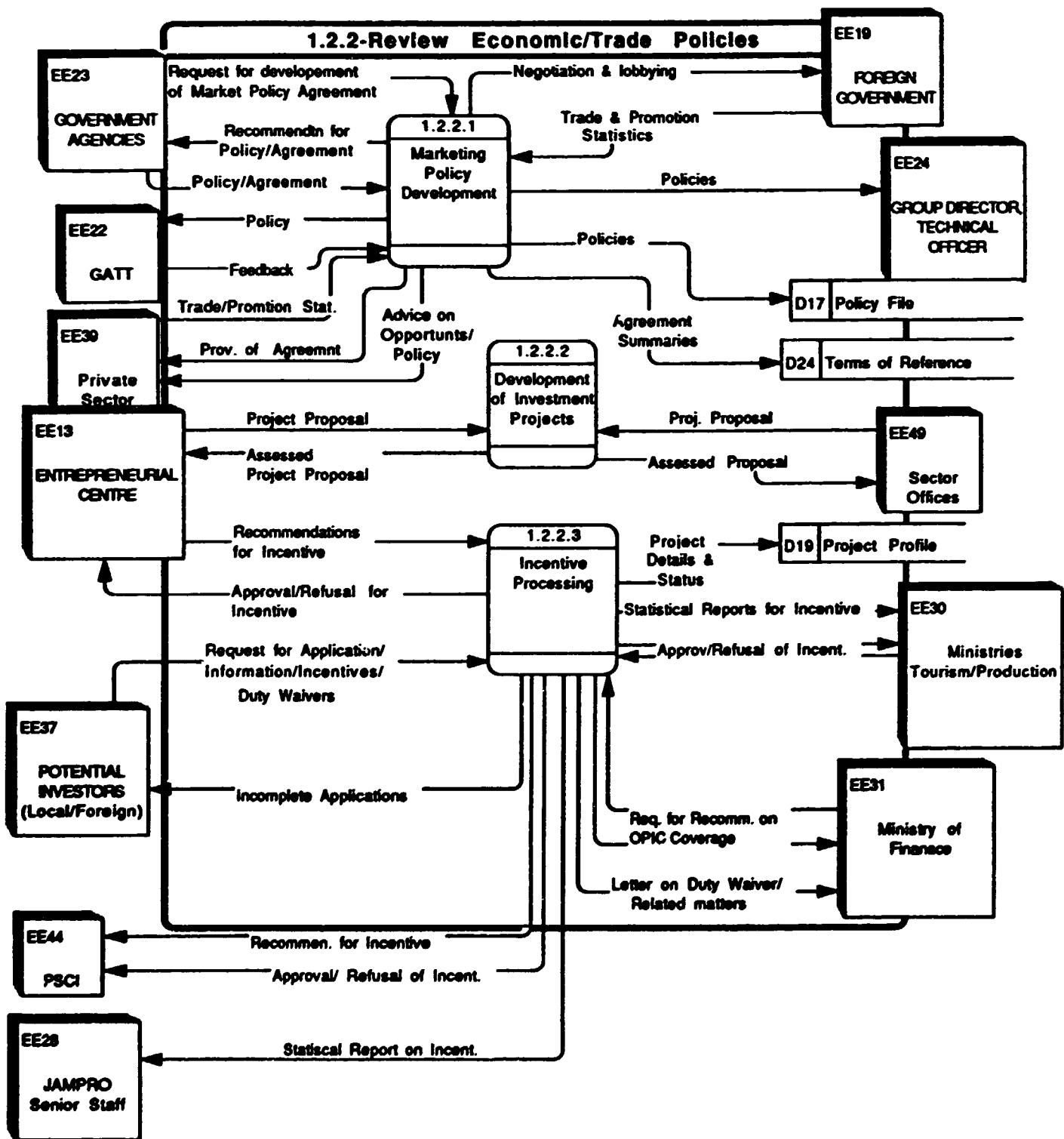




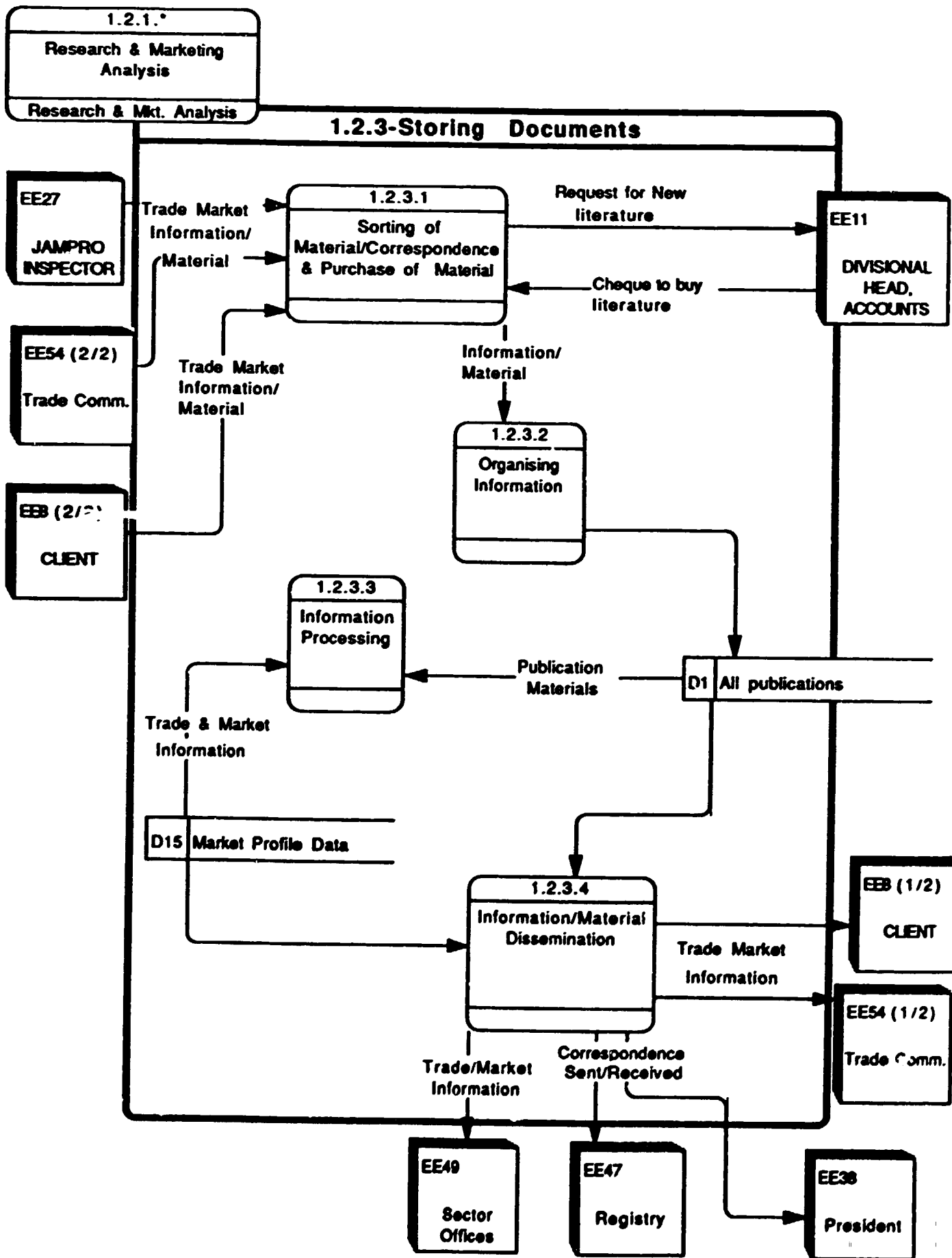
GOVERNMENT AGENCIES : STATIN, PIOJ, BOJ, JPS

CLIENTS : JEA, JMA, Trading Houses

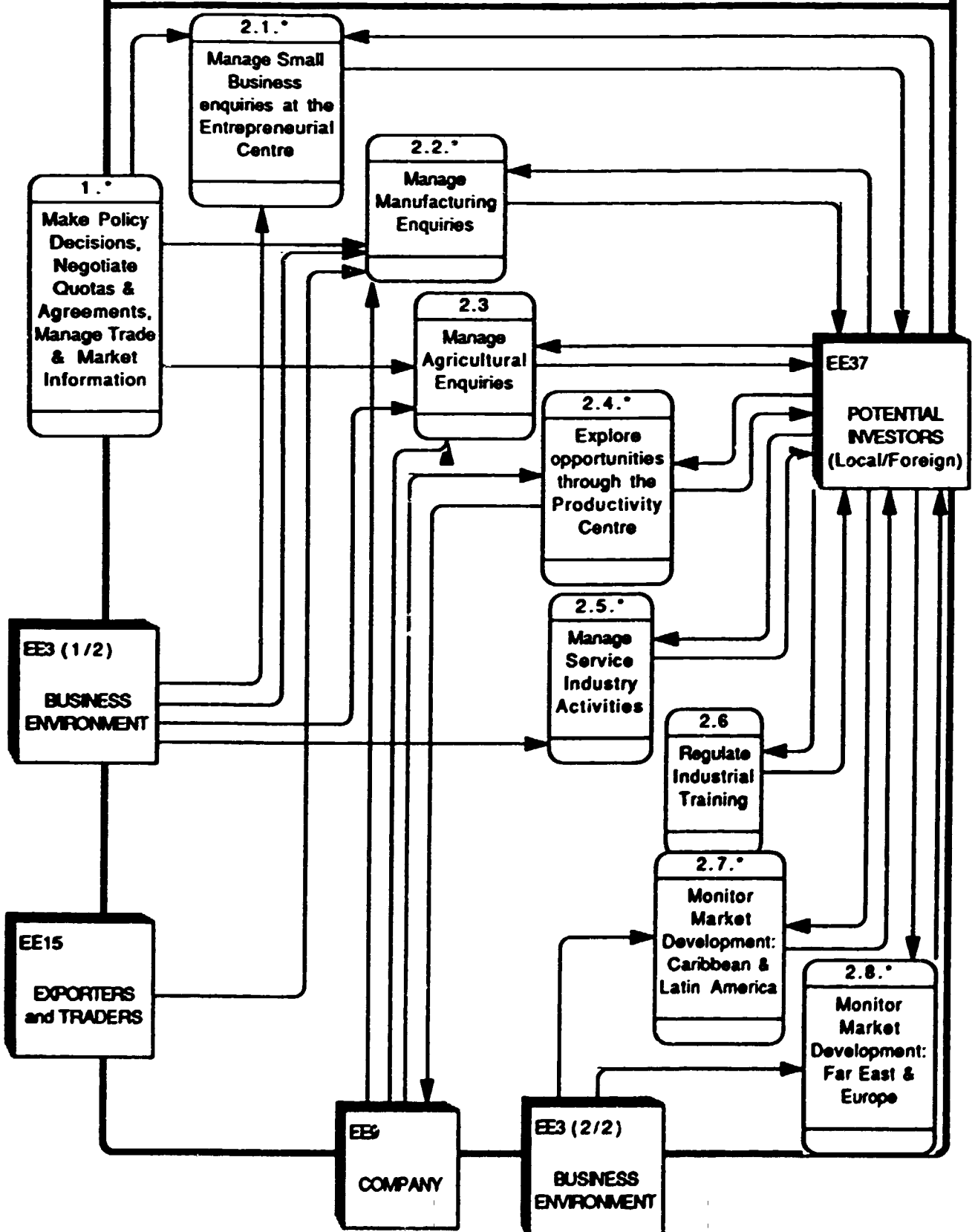
DOCUMENT CENTRE - LIBRARY



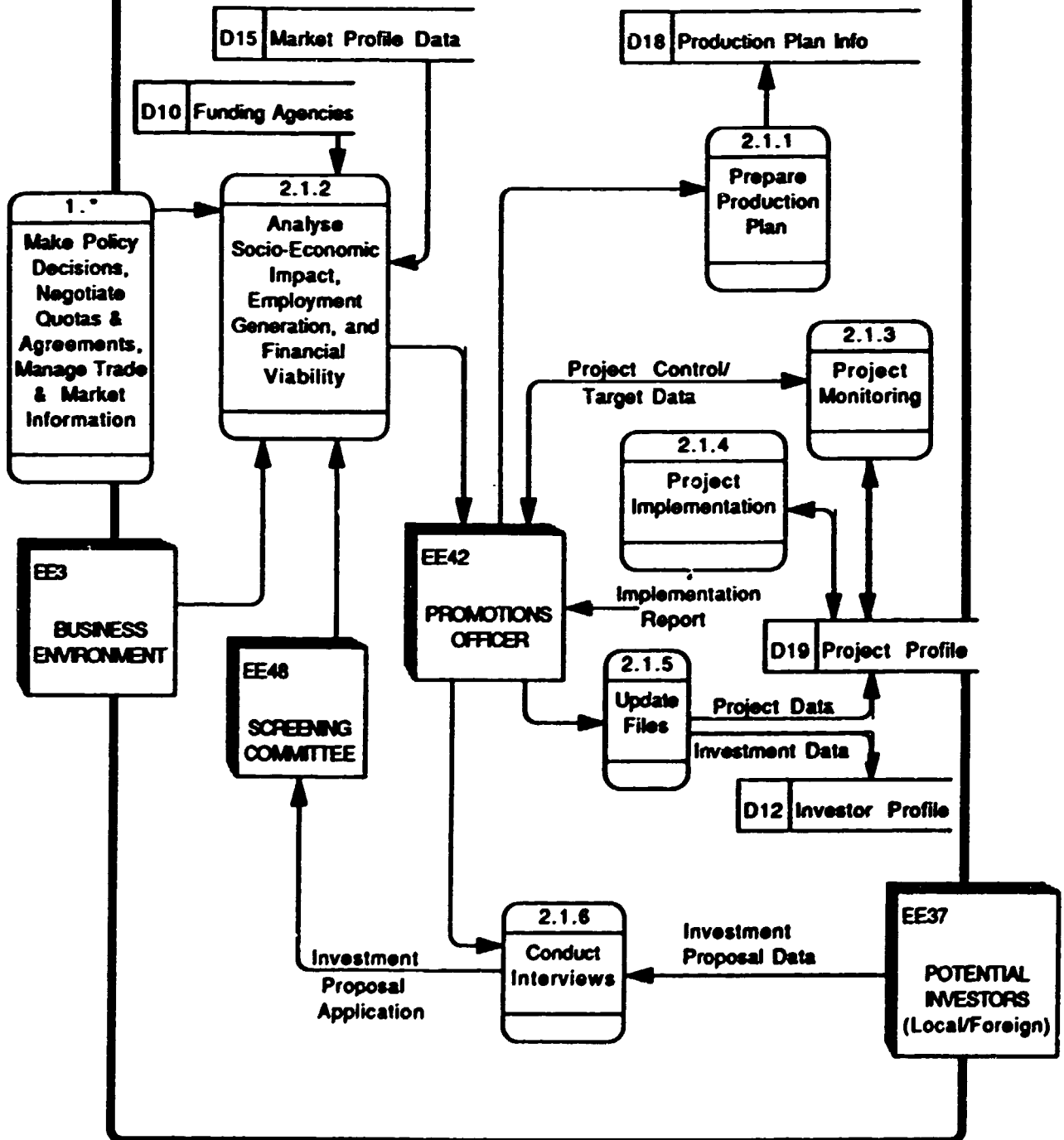
PSCI - Incentive Advisory Committee



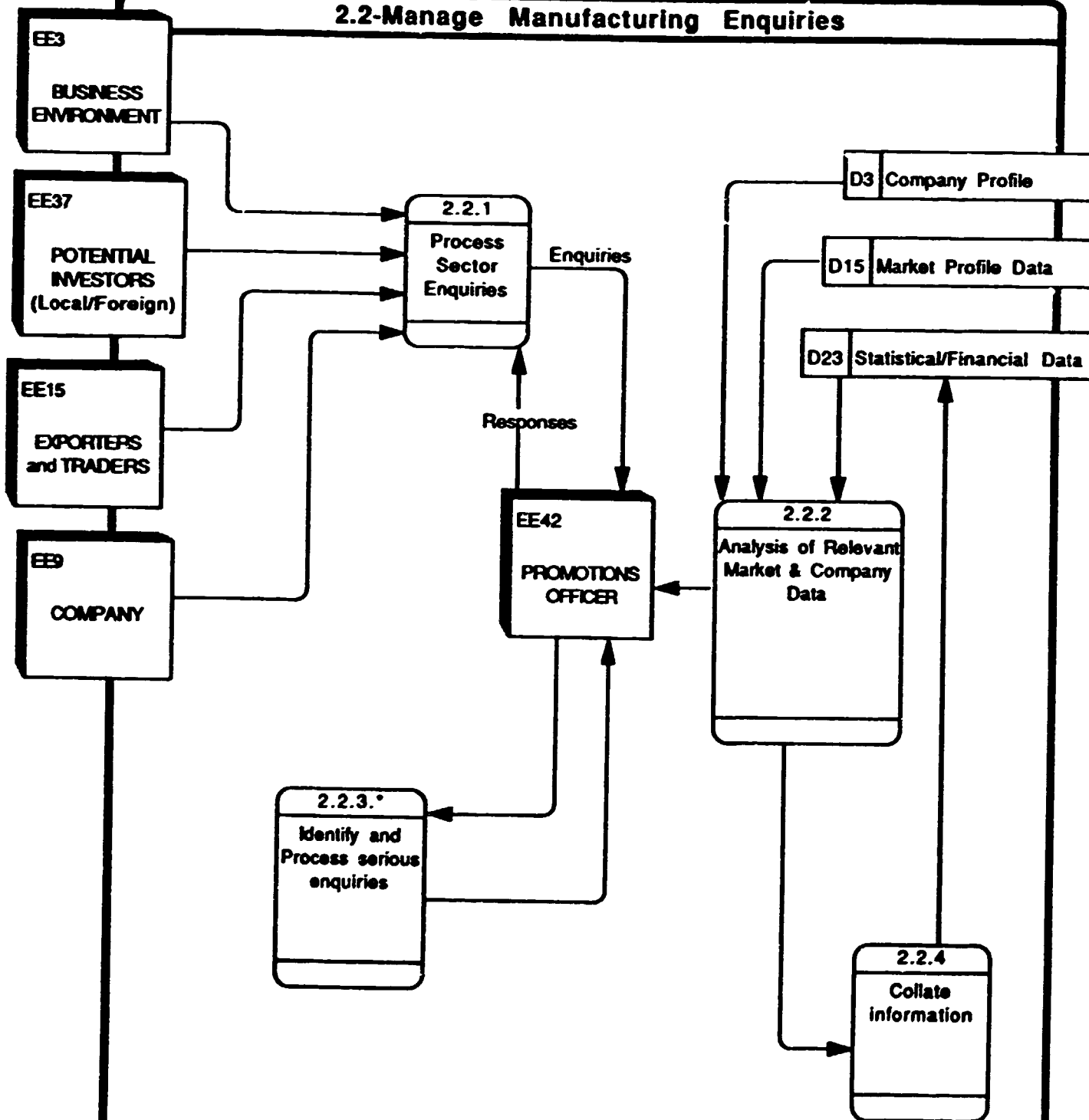
2-Manage enquiries about Jamaican Products, Support Information Needs



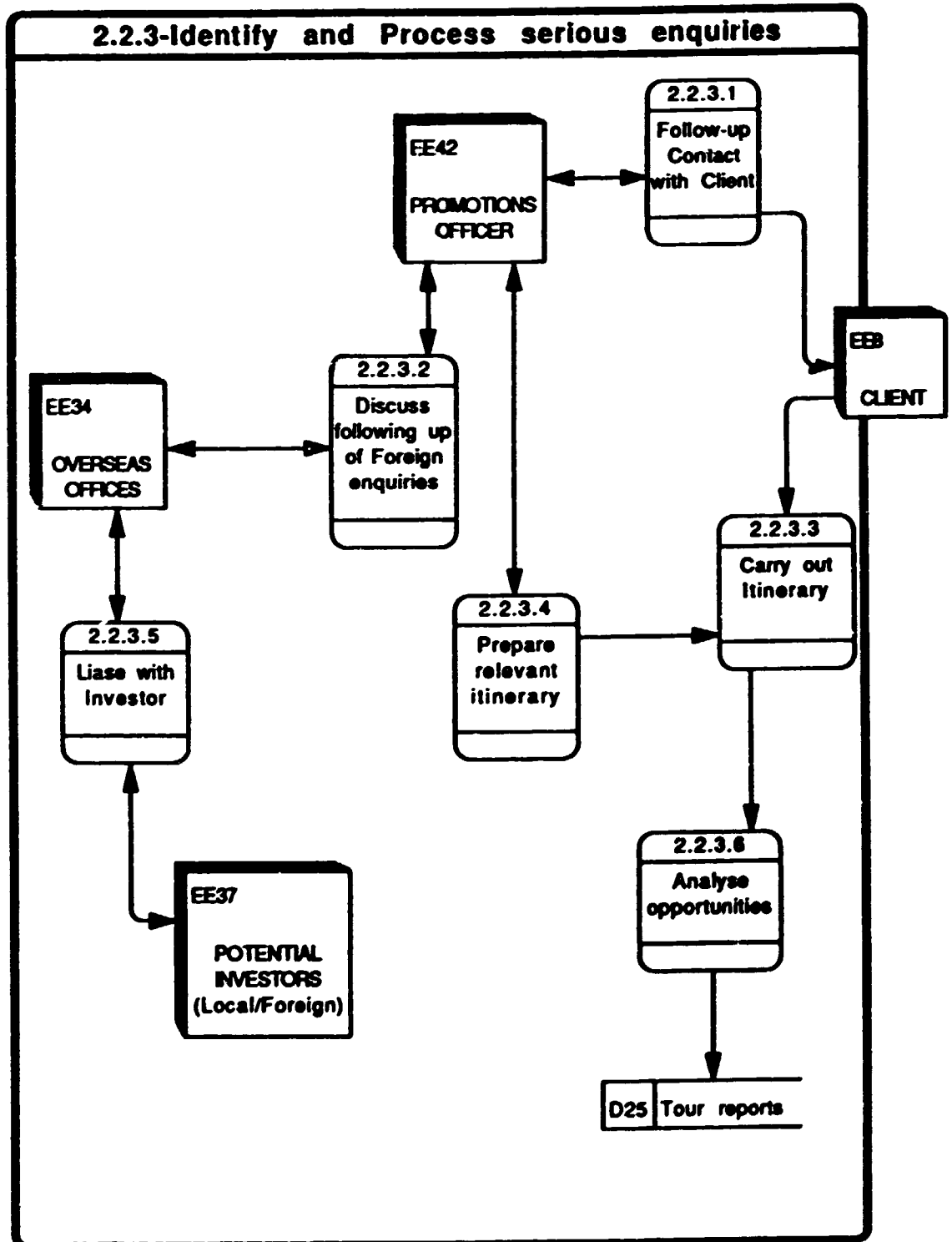
2.1-Manage Small Business enquiries at the Entrepreneurial Centre



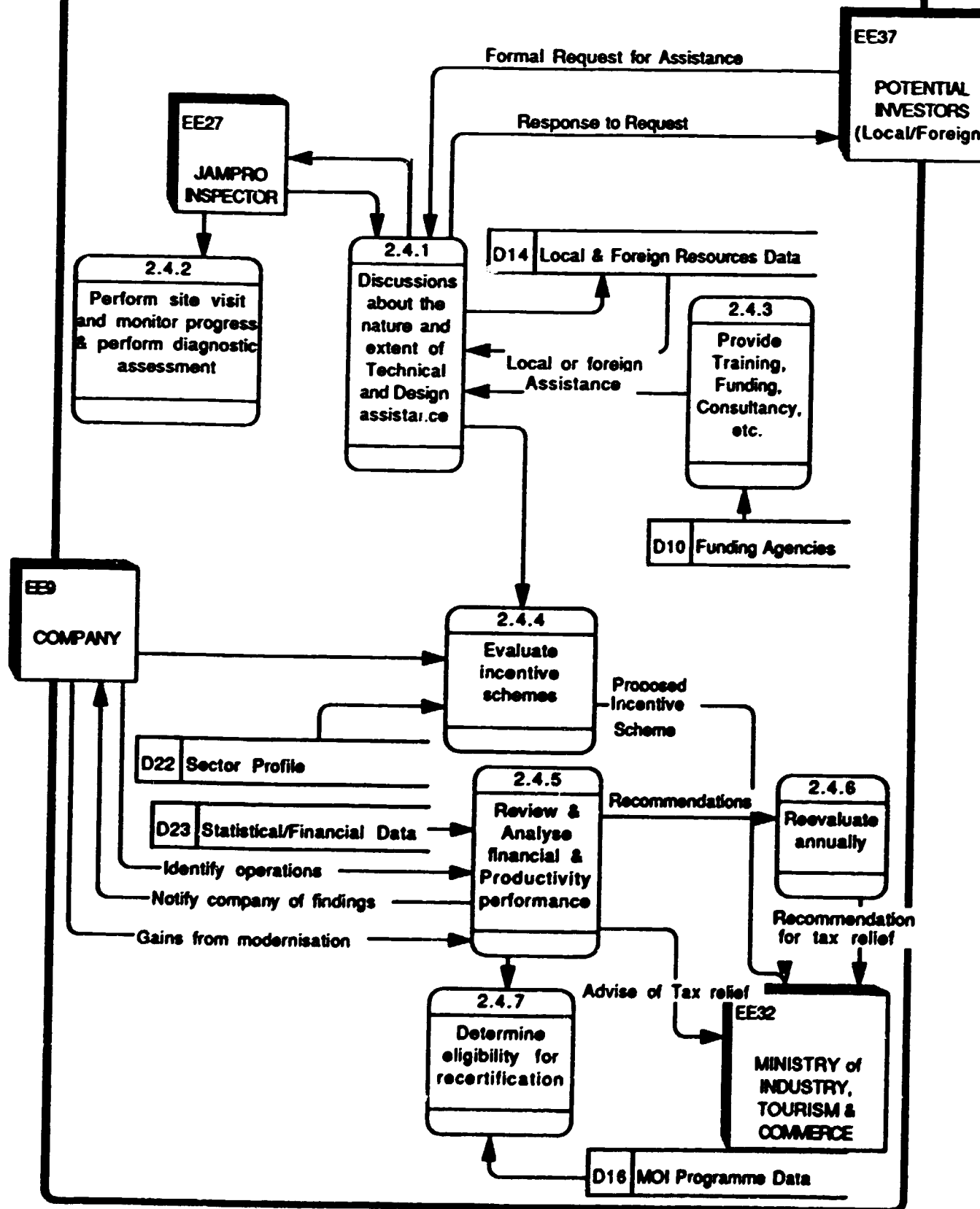
2.2-Manage Manufacturing Enquiries

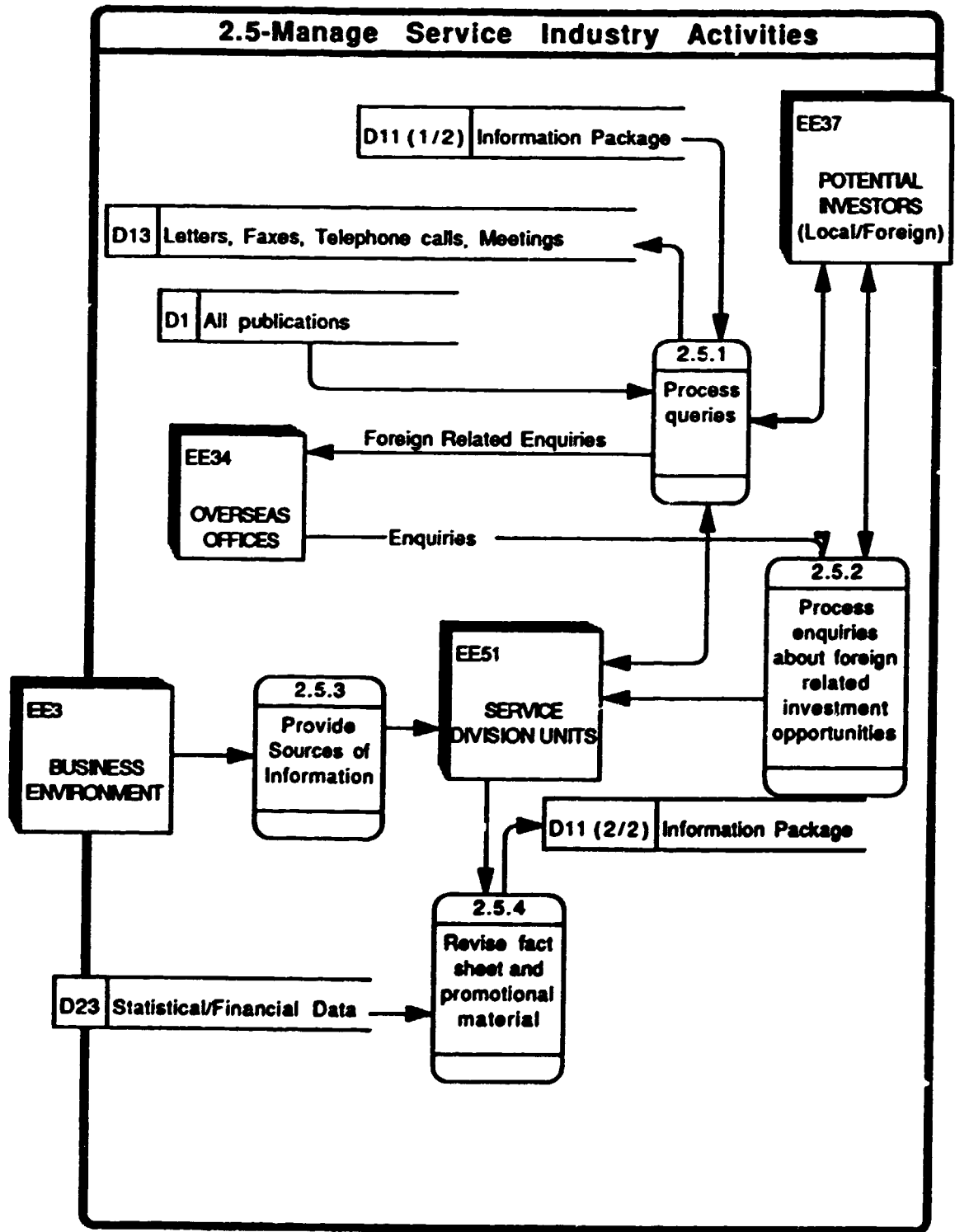


2.2.3-Identify and Process serious enquiries

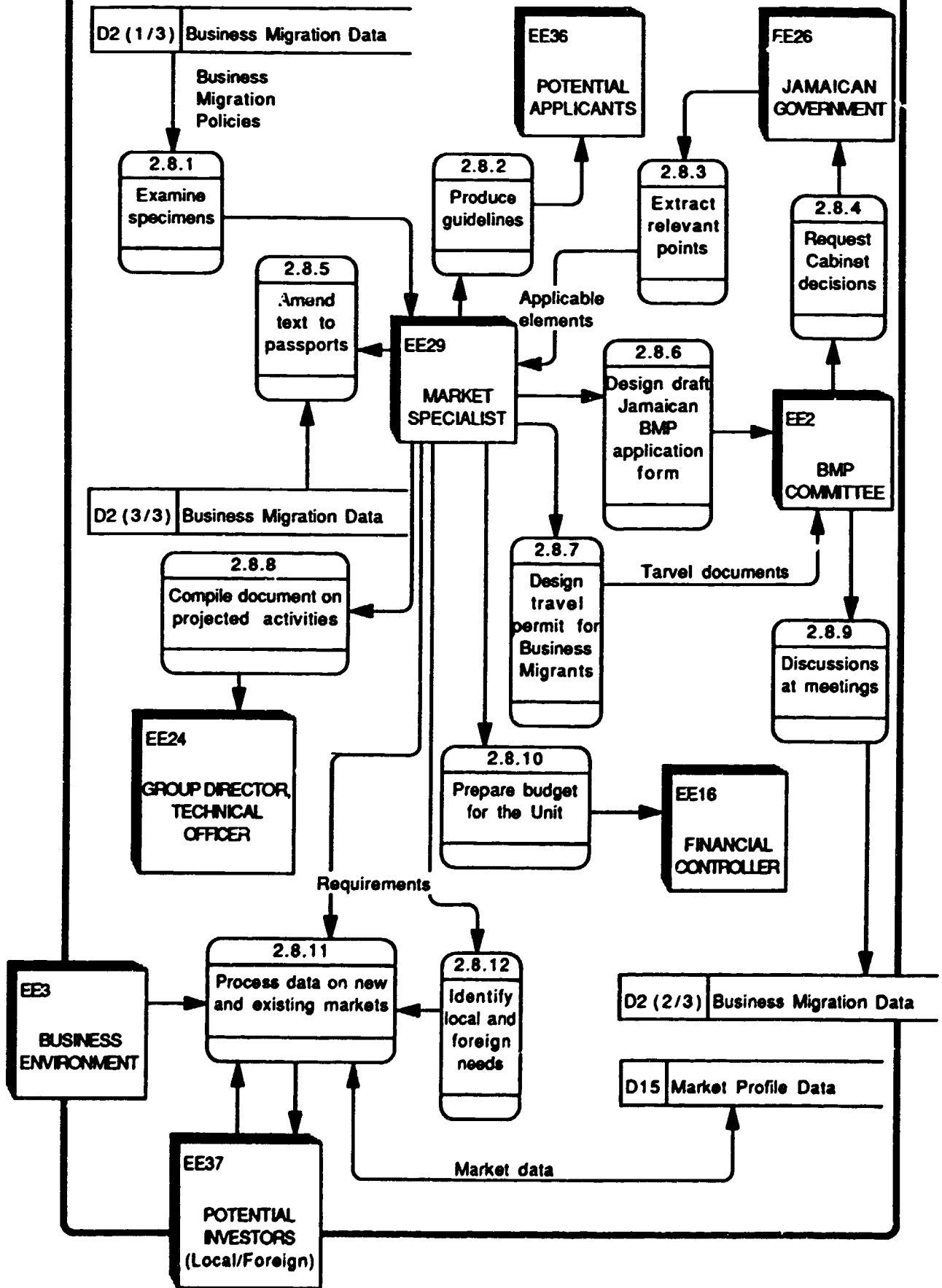


2.4-Explore opportunities through the Productivity Centre





2.8-Monitor Market Development: Far East & Europe



DATA DICTIONARY

**JAMAICA PROMOTIONS CORPORATION
DATA DICTIONARY**

			DESCRIPTION
Abstract	Memo		Product Abstract
Acc_descr	Char	20	Description of Access Level
Access_lev	Num	2	Level of Access of Correspondence
Action	Char	3	Code for Activity Done/Action Taken
Activity	Char	50	Promotional Activity
Activity_type	Char	10	Activity Type (client contact)
Activ_code	Char	5	Consignee Activity code
Activ_desc	Char	30	Description of Activity
Activ_out	Char	30	Outcome of Activity
Act_code	Char	3	Officer Activity Code
Act_date	Date	10	Actual Date for Milestone
Activ_date	Date	10	Date of Activity
Act_prc	Num	14.2	Actual Price
Act_stat	Char	3	Activity/Action Status
Act_taken	Char	3	Action Taken
Addr1	Char	25	Bank Address

**JAMAICA PROMOTIONS CORPORATION
DATA DICTIONARY**

Field Name	Format	Length	Description
Addr2	Char	25	Bank Address
Add_amt	Num	14.2	Additional Amount
Adv_agency	Char	3	Advertising Agency
Aff_comp	Char	60	Affiliated Companies
Age	Num	2	Age of Client
Agency_code	Char	3	Code assigned to agency
Agent_code	Char	5	Transport Agent Code
Agent_rep	Char	30	Name of Companies Represented by Agent
Agen_desc	Char	30	Name of Agency
Agr_date	Date	10	Effective Date of Agreement
Alloc_year	Num	4	Allocation Year
All_incl	Num	14.2	All Inclusive Cost
Amount	Num	14.2	Amount Funded
Amt_allo	Num	12.2	Country's Allocated Quota
Amt_alloc	Num	12.2	Quota Allocated to a Company
Amt_used	Num	12.2	Amount Used

**JAMAICA PROMOTIONS CORPORATION
DATA DICTIONARY**

Ann_prod_qty	Num	10	Quantity Produced
Ann_prod_val	Num	14	Production Value
Ann_salesja	Num	14	Annual Sales (J\$)
Ann_salesus	Num	14	Annual Sales (US\$)
Ann_size	Num	10	Product Size
Ann_units	Num	10	Total Units produced annually
Ann_val	Num	14.2	Value of Annual Production
Applic_no	Char	10	Application Number
App_date	Date	10	Application Date
App_spec	Char	40	Application Specifications
App_status	Char	2	Application Status
Asst_reqd	Char	5	Type of assistance
Ass_Desc	Char	30	Description of type of assistance
Ass_type	Char	3	Type of assistance
Auth_date	Date	10	Authorisation Date

**JAMAICA PROMOTIONS CORPORATION
DATA DICTIONARY**

			DESCRIPTION
Bank_code	Char	3	Bank Code
Beno_no	Char	10	Beno number
Bin_no	Char	10	Bin Number
Bk_name	Char	30	Bank Name
Broker	Char	5	Customs Broker ID
Brok_addr	Char	50	Broker's Address
Brok_name	Char	30	Broker's Name
Budget	Num	14	Budget
Busin_type	Char	30	Specialization/General Comments
Bus_desc	Char	30	Description of type of business
Bus_type	Char	3	Type of Business
Cap_inv	Num	14.2	Capital Investment
Cap_invj	Num	14.2	Capital Investments J\$
Cap_invus	Num	14.2	Capital Investments US\$
Car_sales	Num	14.2	Export Sales to Caricom
Car_units	Num	10	Quantity to Caricom

**JAMAICA PROMOTIONS CORPORATION
DATA DICTIONARY**

DEFINITION			
Cast_agfees	Num	14.2	Casting, Talent and Agency Fees, etc.
Category	Char	10	Product Category Code
Cater	Num	14.2	Catering Cost
Cat_code	Char	10	Category Code (eg., Clerical)
Cat_desc	Char	30	Description of Category
Ccategor	Num	2	Correspondence Category Code
Cert_date	Date	10	Certificate Date
Cert_desc	Char	30	Certificate Type Description
Cert_no	Num	4	Certificate Number
Cert_type	Char	5	Type of certificate
Characteristic	Char	30	Market Characteristics
Charges	Num	12.2	Charges Incurred
Chas_no	Char	10	Chassis Number
Cif_value	Num	14.2	CIF Value of Equipment
Class	Char	2	Project Class
Client	Char	30	Major Clients
Cl_desc	Char	30	Class Description

**JAMAICA PROMOTIONS CORPORATION
DATA DICTIONARY**

DEFINITION			
Co_code	Char	5	Company Code
Code_stat	Char	1	Code Status
Co_goals	Char	100	Company Goals
Co_status	Char	3	Company Status (active)
Comments	Char	40	Comment
Comm_date	Date	10	Date of Commissioning of Equipment
Constr	Num	14.2	Construction Costs
Cons_addr	Char	40	Consignee Address
Cons_id	Char	10	Consignee ID
Cons_name	Char	30	Consignee Name
Contact	Char	35	Contact Person
Contact_mode	Char	30	Mode of Contact (letter)
Contact_title	Char	30	Job Title
Contpers	Char	30	Contact Person at Company
Conv_factor	Num	5.2	Conversion Factor
Copies	Num	4	Number of Copies

**JAMAICA PROMOTIONS CORPORATION
DATA DICTIONARY**

Correspno	Num	6	Reference Number
Corr_type	Char	1	Correspondence Type (in/out)
Cor_desc	Char	20	Correspondence Category Code
Country	Char	30	Name of Country
Count_code	Char	3	Country Code
Co_addr	Char	50	Company's Address
Co_addr1	Char	30	Address1
Co_addr2	Char	30	Address2
Co_addr3	Char	30	Address3
Co_constraints	Char	100	Company Constraints
Curr_sales	Num	14.2	Hard Currency Sales
Curr_stat	Char	3	Current Status
Curr_units	Num	10	Hard Currency Units
Cur_emp	Num	5	Current Employment
Cur_indsp	Num	7	Current Land Space
Cur_offsp	Num	7	Current Office Space

**JAMAICA PROMOTIONS CORPORATION
DATA DICTIONARY**

			DESCRIPTION
Dateof_act	Date	10	Date Action Taken
Date_disp	Date	10	Date Dispatched
Date_ent	Date	10	Date Entered
Date_estab	Date	10	Date Established
Date_rec	Date	8	Date Received/Sent
Date_recom	Date	10	Date of last recommendation
Date_recd	Date	10	Start Date
Date_recorded	Date	10	Date Recorded
Dcateg	Char	3	Category Code
Deliv_trms	Char	100	Delivery Terms
Demand_gr	Num	3	Demand Growth Rate
Desc_fac	Char	20	Description of operational facility
Desc_fab	Char	30	Fabric Description
Desc_type	Char	20	Description of Project Type
Desc_legal	Char	30	Description of Legal Status
Desc_add	Char	100	Comments/Description of additional funds

**JAMAICA PROMOTIONS CORPORATION
DATA DICTIONARY**

DEFINITION			
Description	Char	50	Project Description
Destin	Char	3	Destination
Dev_assist	Char	30	Development Assistance
Director	Char	20	Director
Disch_port	Char	30	Port of Discharge
Disb_todate	Num	14	Amount Disbursed to Date
Div_code	Char	3	Division Code
Div_desc	Char	30	Name of Division/Department
Dlevel	Num	1	Category Level
Doc_desc	Char	20	Category Description
Dom_sale	Num	12	Domestic Sales
Duty	Num	5	Landed Duty
Emp_cap	Num	10	Employment Capacity
Emp_cat	Char	5	Employment Category
Emp_gen	Num	10	Employment Generation
End_date	Date	10	Ending Date

**JAMAICA PROMOTIONS CORPORATION
DATA DICTIONARY**

End_time	Num	8	Ending Time
Eng_no	Char	10	Engine Number
Enq_date	Date	10	Enquiry Date
Enq_desc	Char	30	Status Name
Enq_no	Num	5	Enquiry Number
Enq_status	Char	3	Status Code
Enq_type	Char	3	Enquiry Type (eg., Serious)
Entry_proc	Char	50	Entry Procedures
Entry_reg	Char	40	Entry Regulations
Entry_req	Char	40	Entry Requirements
Equip_age	Num	4	Age of Main Equipment
Equity	Num	14.2	Equity
Equip_rent	Num	14.2	Equipment Rental
Exch_rate	Num	7.4	Foreign Exchange Rate
Exec_prod	Char	20	Executive Producer
Exportsja	Num	14.2	Exports (J\$)

**JAMAICA PROMOTIONS CORPORATION
DATA DICTIONARY**

			DESCRIPTION
Exportsus	Num	14	Exports (US\$)
Export_exp	Char	100	Export Experience
Export_no	Char	10	Exporter Number
Export_year	Num	4	Year for Export Data
Exprg_code	Char	5	Export Programme Code
Exprg_name	Char	30	Export Programme Name
Exp_date	Date	10	Certificate Expiry Date
Exp_mgn	Char	30	Export Manager
Exp_per	Num	3.2	Export Percentage
Exp_qty	Num	10	Quantity
Exp_sale	Num	12	Export Sales
Exp_std1	Date	10	Export Start Date
Fabric	Char	20	Type of Fabric
Fab_qty	Num	12	Quantity of Fabric Used
Facility	Char	5	Operation Facility
Fac_addr	Char	40	Address of Facility
Fac_size	Num	5	Facility Size

**JAMAICA PROMOTIONS CORPORATION
DATA DICTIONARY**

			DESCRIPTION
Fax_no	Char	14	Fax Number
Fees	Char	15	Promotion Activity Fees Charged
File_date	Date	10	Date of Entry
Filedesc	Char	30	File Type Description
File_desc	Char	40	Description of File
File_loca	Char	40	File Location
File_name	Char	80	File Name
File_no	Num	8	Sequential File Number
File_stat	Char	1	File Status
File_type	Num	2	File Type Code
Film_date	Date	10	Date of Entry
Film_desc	Char	40	Description of Film
Film_key	Char	20	File Keyword
Film_loca	Char	40	Film Location
Film_name	Char	80	Film/Photograph Name
Film_stat	Char	1	Film Status

**JAMAICA PROMOTIONS CORPORATION
DATA DICTIONARY**

			DESCRIPTION
Film_typ	Num	2	Film Type code
Film_type	Num	2	Film type
Film_typ_desc	Char	30	Film Type Description
Fin_method	Char	30	Method of Finance
Fin_source	Char	30	Finance Source
First_prod	Date	10	Date First Produced
First_name	Char	30	Christian Name
Fname	Char	30	Christian Name
Fob_ja	Num	10.2	Freight on Board - JA\$
Fob_us	Num	10.2	Freight on Board - US\$
Foreign_lwrr	Num	14.2	Foreign Lower Price
Foreign_prc	Num	14.2	Foreign Price
Foreign_uppr	Num	14.2	Foreign Upper Price
For_capinv	Num	14.2	Total Foreign Capital Investment
For_comp	Char	40	Foreign Competitors
For_jv	Num	3	Foreign % of Joint Venture

**JAMAICA PROMOTIONS CORPORATION
DATA DICTIONARY**

DEFINITION			
For_opcost	Num	14.2	Total Foreign Operating Cost
For_payroll	Num	14.2	Total Foreign Payroll
For_prc	Num	7.2	Foreign Price
For_raw_mat	Num	14.2	Total Foreign Raw Materials
For_sales	Num	14.2	Total Foreign Sales
Free_area	Char	3	Free Zone Area Code
Frdate	Date	10	From Date
Free_code	Char	3	Free Zone Area Code
Free_name	Char	30	Free Zone Area Name
Freezone_desc	Char	100	Description of Free Zone Interests
Freezone_int	Char	1	Freezone Interests (Y or N)
Frequency	Char	5	Frequency
Freq_code	Char	5	Frequency of Trips
Freq_desc	Char	30	Frequency Description
Fr_officer	Char	20	Officer Returning File
Fund_agy	Char	5	Funding Agency Code
Fund_name	Char	30	Agency Name
Fund_addr1	Char	30	Funding Agency Address1
Fund_addr2	Char	30	Funding Agency Address2

**JAMAICA PROMOTIONS CORPORATION
DATA DICTIONARY**

DEFINITION			
Fund_prg	Char	5	Funding Programme
Gender	Char	1	Gender
Gen_comm	Char	100	General Comments
Grade	Char	2	Product Grade
Group	Char	10	Apparel Group
Group_desc	Char	30	Group description
Growth_pot	Char	20	Growth Potential
Host	Char	30	Company presenting activity
Hotel	Num	14.2	Hotel Expenses
HS_code	Char	10	Harmonised System Code
Id_code	Char	3	Type of Identification
Id_desc	Char	30	Identification Type Description
Id_no	Char	10	Identification number
Imp_purch	Num	14	Cost of imported materials
Incentives	Char	50	Market Incentives
Info_date	Date	10	Information Date
Info_sent	Char	40	Information Received

**JAMAICA PROMOTIONS CORPORATION
DATA DICTIONARY**

			DESCRIPTION
Info_source	Char	30	Information Source
Ins_co	Char	20	Insurance Company
Ins_pol	Char	10	Insurance Policy Number
Interest	Char	3	Area of Interest (eg., Farming)
Intial	Char	2	Middle Initial
Inv_amt	Num	14.2	Invoice Amount
Inv_follow	Char	60	Investor Follow Up
Inv_no	Char	10	Invoice Number
In_date	Date	10	Date In
Item_no	Char	3	Item Number
Jampro_code	Char	10	Jampro Code
Jampro_role	Char	10	Role of Jampro
JBS_no	Char	9	Jamaica Bureau of Standards Number
Jv_desc	Char	100	Description
Jv_offered	Logical	1	Joint Venture Offered
Jv_sought	Logical	1	Joint Venture Sought

**JAMAICA PROMOTIONS CORPORATION
DATA DICTIONARY**

			DESCRIPTION
Keyword	Char	20	File Keyword
Key_cast	Char	40	Main Cast in Film
Labour_cost	Num	14.2	Labour Cost
Landed_duty	Num	10.2	Duty on Imports
Language	Char	10	Language Spoken
Last_client	Char	30	Last Client
Lead_time	Num	4	Lead Time in Days
Legal_stat	Char	3	Legal Status
Lname	Char	30	Surname or Business Name
Loan	Num	14.2	Loan Amount
Loan_req	Char	100	Loan Requirements
Local	Logical	1	Locally Acquired
Local_input	Num	3.2	Percent of Local Input
Local_lwr	Num	14.2	Local Lower Price
Local_prc	Num	14.2	Local Price

**JAMAICA PROMOTIONS CORPORATION
DATA DICTIONARY**

Local_purch	Num	14.2	Cost of Materials Purchased Locally
Local_sales	Num	14.2	Local Sales
Local_units	Num	10	Quantity Sold Locally
Local_uppr	Num	14.2	Local Upper Price
Location	Char	3	Location/Parish Code
Loc_agent	Char	30	Name of Local Agent
Loc_ag_addr	Char	60	Local Agent Address
Loc_ag_fax	Char	14	Local Agent Fax
Loc_ag_tele	Char	14	Local Agent Telephone
Loc_capinv	Num	14.2	Total Capital Investment
Loc_code	Char	3	Location/Parish Code
Loc_comp	Char	40	Local Competitors
Loc_desc	Char	30	Description of Location
Loc_equity	Num	14.2	Equity Local Currency
Loc_fees	Num	14.2	Local Fees
Loc_jv	Num	3	Local % of Joint Venture
Loc_loan	Num	14.2	Loan Local Currency

**JAMAICA PROMOTIONS CORPORATION
DATA DICTIONARY**

Loc_mgnr	Char	20	Location Manager
Loc_opcost	Num	14.2	Total Local Operating Costs
Loc_payroll	Num	14.2	Total Local Payroll
Loc_raw_mat	Num	14.2	Total Locally Bought Raw Materials
Loc_sales	Num	14.2	Total Local Sales
Loc_xtra	Num	14.2	Local Extras
Lowr_prc	Num	14.2	Lower Price
Lat_num	Num	4	Last Sequential Number Used
Mailname	Char	30	Person/Company Name
Mailaddr	Char	60	Address of Person/Company Name
Mailtele	Char	14	Telephone Number
Mail_des	Char	30	Description of Mail Type
Mail_fax	Char	14	Fax Number
Mail_1st	Logical	1	On Mailing List - (Y/N)
Mail_type	Char	3	Mail Type Code
Main_comp	Char	30	Main Competition

**JAMAICA PROMOTIONS CORPORATION
DATA DICTIONARY**

DEFINITION			
Main_cust	Char	30	Main Customers
Main_disb	Char	30	Main Distributors
Make	Char	20	Make of Vehicle
Manu_addr1	Char	30	Manufacturer's Address
Manu_addr2	Char	30	Manufacturer's Address
Manu_code	Char	5	Manufacturer's Code
Manu_name	Char	30	Manufacturer's Name
Manu_no	Char	10	Manufacturer's Number
Man_ovhd	Num	14.2	Factory and Manufacturing Overhead
Market	Char	3	Market Code
Market_code	Char	3	Market Code
Marks	Char	20	Distinguishing Marks
Material	Char	20	Type of Material
Mark_desc	Char	30	Name of Market
Mat_cons	Num	10	Cost of Raw Materials Consumed
Mat_qty	Num	10.2	Quantity of Fabric used
Mat_val	Num	12.2	Material Value

**JAMAICA PROMOTIONS CORPORATION
DATA DICTIONARY**

DESCRIPTION			
Max_part	Num	5	Maximum Number Participants
Max_qty	Num	7	Maximum Order Quantity
Ma_addr1	Char	30	Mailing Address1
Ma_addr2	Char	30	Mailing Address2
Ma_addr3	Char	30	Mailing Address3
Merg_catno	Char	10	Merged Category #
Merg_desc	Char	30	Merged Category Description
Message	Char	30	Error Message
Middle	Char	1	Middle Initial
Mid_init	Char	2	Middle Initial
Milestone	Char	20	Project Milestone
Mile_date	Date	10	Milestone Status Date
Mile_stat	Char	10	Milestone Status
Min_qty	Num	5	Minimum Order Amount
Misc	Num	14.2	Miscellaneous
MOA_no	Char	9	Ministry of Agriculture Number

**JAMAICA PROMOTIONS CORPORATION
DATA DICTIONARY**

			DESCRIPTION
Mode_code	Char	5	Transport Mode Code
Mode_desc	Char	30	Code Description
Mrkt_rep	Char	30	Market Representation
Mrk_status	Char	10	Status (major, minor)
Msg_no	Num	3	Message Number
Mvc_date	Date	10	Certification Date
Mvc_no	Char	10	Motor Vehicle Certification Number
Nature_code	Char	3	Nature of Project (new, expansion, etc.)
Nat_desc	Char	30	Description of Nature
Nega_no	Num	8	Negative Number
Net_profit	Num	14	Net Profit
Next_app	Date	10	Next Appointment
No_shifts	Num	5	Number of Shifts

**JAMAICA PROMOTIONS CORPORATION
DATA DICTIONARY**

			DESCRIPTION
No_empl	Num	5	Number of Employees
No_machine	Num	5	Number of Machines
Number	Num	5	Sequential number
Off_follow	Char	60	Officer Follow Up
Officer	Char	20	Responsible Officer
Opp_no	Num	5	Opportunity Number (country code+product code+sequential #)
Opp_status	Char	5	Opportunity Status
Opp_type	Char	5	Opportunity Type
Op_const	Char	100	Operating Constraints
Origin	Char	3	Country of Origin
Other	Char	20	Other/Miscellaneous Information (film)
Out_bet	Num	10	Output between commissioning of equipment and review date
Out_date	Date	10	Date Out
Own_struc	Char	2	Ownership Structure Code (JV, IR, LC)
Pack_cost	Num	14.2	Packing Cost
Parish	Char	3	Parish Location

**JAMAICA PROMOTIONS CORPORATION
DATA DICTIONARY**

Party_a	Char	10	Party in Agreement
Party_b	Char	10	Party in Agreement
Part_reg	Num	5	Number of Participants Registered
Password	Char	10	User Password, encrypted
Payments	Num	12.2	Payments Made
Paycert_date	Date	10	Certificate Payment Date
Pay_date	Date	10	Payroll Date
Pay_terms	Char	100	Payment Terms
Percentage	Num	3.2	Percentage Owned
Percent_exp	Num	3.2	Export Percentage
Perm_avg	Num	10	Average permanent workers
Perm_empl	Num	10	Total Foreign Permanent Employees
Perm_empl	Num	10	Total Local Permanent Employees
Perm_empp	Num	10	Projected Permanent Employees
Perm_work	Num	10	Number of permanent workers
Per_diem	Num	14.2	Per diem amount

**JAMAICA PROMOTIONS CORPORATION
DATA DICTIONARY**

			DESCRIPTION
Phone_no	Char	14	Telephone Number
Pol_name	Char	20	Insurance Policy Description
Pol_descr	Char	30	Agreement Policy Description
Pol_exp	Date	10	Policy Expiry Date
Pol_no	Char	5	Policy No. for policies affecting or impacting in any way on a project
Port_of_call	Char	30	Port of Call
Position	Char	3	Position Held
Poss_inc	Num	3	Possible Increase
Post_prod	Num	14	Post Production
Pport_no	Char	11	Passport Number
Preference	Char	20	Market Preferences
Presenter	Char	30	Speaker
Pres_perm_fem	Num	7	Permanent Female
Pres_perm_male	Num	7	Permanent Male
Pres_temp_fem	Num	7	Temporary Female
Pres_temp_male	Num	7	Temporary Male

**JAMAICA PROMOTIONS CORPORATION
DATA DICTIONARY**

			DESCRIPTION
Pres_tot_perm	Num	7	Total Number Permanent Staff
Pres_tot_temp	Num	7	Total Number Temporary Staff
Prev_stat	Char	3	Previous Status
Pre_prod	Num	14.2	Pre-Production Expenses
Prg_code	Char	5	Funding Programme
Prg_name	Char	30	Programme Name
Prg_val	Num	14.2	Programme Value
Prime_cost	Num	14.2	Prime Cost
Prv_rent	Num	14.2	Private Rental Cost
Producer	Char	20	Name of Producer
Product	Char	10	Product Code
Prod_cap	Num	10	Production Capacity
Prod_code	Char	5	Product Code
Prod_desc	Char	30	Description of Product
Prod_desig	Char	20	Production Designer

**JAMAICA PROMOTIONS CORPORATION
DATA DICTIONARY**

			DESCRIPTION
Prod_mgnr	Char	20	Production Manager
Prod_summ	Char	200	Product Summary
Prod_techcr	Num	14.2	Production and Technical Crew
Prof_type	Char	3	Type of Opportunity (offer, need - profile, query)
Prg_Percent	Num	4.2	Programme Percentage
Project_code	Char	10	Project Code
Project_type	Char	5	(investment, non-investment, etc)
Proj_cap	Num	14.2	Projected Capital
Proj_code	Char	5	Project Code
Proj_contact	Char	30	Project Contact
Proj_cost	Num	14.2	Cost of Project
Proj_date	Date	10	Projection Date
Proj_desc	Char	30	Description of Project
Proj_nature	Char	2	Project Nature Code (expansion, new project)

**JAMAICA PROMOTIONS CORPORATION
DATA DICTIONARY**

			DESCRIPTION
Proj_no	Char	10	Project Code
Proj_nosht	Num	2	Projected Number of Shift
Proj_perm_fem	Num	7	Projected Permanent Female
Proj_perm_male	Num	7	Projected Permanent Male
Proj_prod_qty	Num	10	Projected Production
Proj_qty	Num	10	Quantity Produced for Project
Proj_stat	Char	3	Project Status
Proj_temp_fem	Num	7	Projected Temporary Female
Proj_temp_male	Num	7	Projected Temporary Male
Proj_tot_perm	Num	7	Projected Permanent Number
Proj_tot_temp	Num	7	Projected Temporary Staff
Proj_year	Num	4	Projection Year
Prom_date	Date	10	Promotion Date
Props	Num	14.2	Props and Set Dressing
Pro_capinv	Num	14.2	Projected Capital Investment

**JAMAICA PROMOTIONS CORPORATION
DATA DICTIONARY**

			DESCRIPTION
Pro_indsp	Num	7	Projected Land Space
Pro_offsp	Num	7	Projected Office Space
Pro_opcost	Num	14	Projected Operating Costs
Pro_payroll	Num	14	Projected Payroll
Pro_raw_mat	Num	14	Projected Raw Materials
Pro_sales	Num	14	Projected Sales
Prv_rent	Num	14	Private Rental
Purchaser	Char	30	Purchaser Name (if not consignee)
Purch_adr	Char	40	Purchaser Address
Qty	Num	10	Quantity of products
Qty_units	Num	12	Number of Units Shipped
Qty_output	Num	10	Output Quantity
Qty_prod	Num	10	Quantity Produced
Quota	Num	12	Quota this Year
Quota_year	Num	4	Year of Quota
Raw_materials	Char	100	Raw Materials Used

**JAMAICA PROMOTIONS CORPORATION
DATA DICTIONARY**

			DESCRIPTION
Receipt_no	Char	10	Receipt Number
Recomm	Char	60	Recommendation/Remark
Referred	Char	20	How Referred
Refer_div	Char	3	Division Referred To
Refer_no	Char	6	Contractors Reference Number
Refer_file	Char	15	File Reference Number
Refer_per	Char	20	Person Referred To
Ref_code	Char	3	Referral Code
Ref_desc	Char	30	Description of Referral
Reg_date	Date	10	Exporter Registration Date
Ref_date	Date	10	Reference Date
Reg_date	Date	10	Registration Date
Reg_no	Num	10	Exporter Registration Number
Reg_plate	Char	10	Registration Plate
Remarks	Char	60	Remarks
Remi_date	Date	10	Reminder Date

**JAMAICA PROMOTIONS CORPORATION
DATA DICTIONARY**

			DESCRIPTION
Rep_addr1	Char	30	Address of Agent Representative
Rep_addr2	Char	30	Address2 of Agent Representative
Rep_addr3	Char	30	Address3 of Agent Representative
Reqmts	Char	50	Requirements
Requester	Char	30	Person making request
Req_ass	Char	40	Required Assistance
Req_date	Num	10	Date Request Made
Req_todate	Num	12.2	Amount Requested to Date
Rev_date	Date	10	Date of Revision
Rev_quota	Num	12	Revised Quota this Year
Roi	Num	5	Rate of Increase
Route	Char	30	Transportation Route
Sales_year	Num	4	Year of Sales Data
Sales_yr	Num	4	Product Sales Year
Sal_jam	Logical	1	Salary of Jamaican
Samples_rcv	Logical	1	Product Samples

**JAMAICA PROMOTIONS CORPORATION
DATA DICTIONARY**

			DESCRIPTION
Sch_date	Date	10	Scheduled Date
Scout_date	Date	10	Scout Date
Script_received	Logical	1	Film Script Received
Seasons	Char	20	Season
Sector	Char	5	Sector/Area of Business
Sect_desc	Char	30	Description of Sector
Serial_no	Char	10	Product serial number
Serv_code	Char	5	Service Code
Serv_cost	Num	14.2	Service Cost
Serv_desc	Char	30	Service Description
Serv_no	Char	10	Service Number
Serv_tax	Num	14.2	Service Tax
Shoot_date	Date	10	Film Shoot Date

**JAMAICA PROMOTIONS CORPORATION
DATA DICTIONARY**

			DESCRIPTION
Shoot_days	Num	4	Shoot Days
Shp_date	Date	10	Shipment Date
Shp_stat	Char	1	Shipment Status
Source	Char	20	Fabric Source
Spec_eff	Num	14	Special Effects
Sp-perm#	Char	10	Special Permit Number
Start_op	Date	10	Operation Start Date
Start_fund	Date	10	Start Date of Funding Programme
Start_proj	Date	10	Project Start Date
Start_ass	Date	10	Assessment Start Date
Start_time	Num	8	Starting Time
Status	Char	3	Current Status
Stat_date	Date	10	Status Date
Stat_desc	Char	30	Description of Project Status

**JAMAICA PROMOTIONS CORPORATION
DATA DICTIONARY**

			DESCRIPTION
Struc_desc	Char	30	Description of Structure
Sub-category	Char	20	Product Sub-Category
Sub_con	Logical	1	Sub-Contract - Y/N
Sub_desc	Char	30	Name/Description of Sub-sector
Sub_fac	Char	20	Facilities within the main facility, e.g. sewing area in factory
Sub_sect	Char	3	Sub-sector Code
Sub_size	Num	9	Size of these facilities
Suppaddr	Char	60	Suppliers Address
Suppname	Char	30	Suppliers Name
Supp_fax	Num	14	Suppliers Fax Number
Supp_tele	Num	14	Suppliers Telephone Number
Surname	Char	30	Surname
Tar_market	Char	3	Target Market Code
Tar_num	Char	10	Tariff Item Number
Telephone	Char	14	Telephone Number

**JAMAICA PROMOTIONS CORPORATION
DATA DICTIONARY**

			DESCRIPTION
Tele_no	Char	14	Telephone Number
Telex_no	Char	14	Fax Number
Temp_avg	Num	10	Average Temporary Workers
Temp_empl	Num	10	Temporary Foreign Employees
Temp_empl	Num	10	Temporary Local Employees
Temp_empp	Num	10	Projected Temporary Employees
Terms	Char	200	Terms of the Agreement
Time	Char	5	Activity Time
Title	Char	15	Job Title of Contact
Todate	Date	10	To Date
Topic	Char	30	Activity Topic
Total	Num	14.2	Payroll Total
Tot_cap	Num	10	Total Capacity
Tot_pkg	Num	10	Number of Packages
To_officer	Char	20	Officer Receiving File
Training	Char	50	Training

**JAMAICA PROMOTIONS CORPORATION
DATA DICTIONARY**

			DESCRIPTION
Trademark	Char	10	Product trademark
Transp_line	Char	20	Transportation Line
Transp_mode	Char	5	Transport Mode
Trans_mode	Char	5	Means of Transport
Trans_name	Char	30	Name of Transport (eg., Air Ja.)
Type_client	Char	1	Type of Client ("C" competitor, "D" distributor, "S" customer)
Unionised	Logical	1	Unionised Staff
Units	Char	5	Unit of Measure
Unit_cst	Num	12.2	Unit Cost (fob/qty)
Unit_prc	Num	12.2	Unit Price for Fabric
Uom	Char	10	Unit of Measure
Uppr_prc	Num	14	Upper Price
User_Access	Num	2	User Access Level
User_code	Char	5	User Code

**JAMAICA PROMOTIONS CORPORATION
DATA DICTIONARY**

			DEFINITION
User_fname	Char	30	User's Christian Name
User_lname	Char	30	User's Surname
Val_add	Num	12.2	Value Added
Val_dt	Date	10	Valued date
Val_opp	Num	14.2	Value of Opportunity
Val_output	Num	14.2	Output Value
Veh_cost	Num	14.2	Vehicle Cost
Veh_no	Char	10	Vehicle Number
Venue	Char	30	Venue of Activity
Villa	Num	14.2	Villa Cost
Visa_no	Char	10	Visa Number
Visa_stat	Char	10	Status of Visa
Visa_typ	Char	3	Type of Visa (eg., USA)
Vis_statdt	Date	10	Visa Status Date
Visitor	Char	20	Name of Visitor

**JAMAICA PROMOTIONS CORPORATION
DATA DICTIONARY**

Variable	Type	Length	Description
Volum_no	Char	10	Volume Number
Wardrobe	Num	14.2	Wardrobe Cost
Wght	Num	10	Weight of Shipment
Writer	Char	20	Writer
Yrs_bus	Num	3	Years in Business

DATABASE DEFINITION

DATABASE DEFINITION FOR JAMAICA PROMOTIONS CORPORATION

DATA FILE : ACTIVITY CODE - ACT_CODE

ATTRIBUTES : FIELD TYPE SIZE DESCRIPTION

PRIMARY KEY ACT_CODE A 3
 ACTIV_DESC A 30 DESCRIPTION OF
 ACTIVITY
 CODE_STAT A 1 ACTIVITY CODE STATUS

DATA FILE : ACCESS LEVEL - ACCESSLEV

ATTRIBUTES : FIELD TYPE SIZE DESCRIPTION

PRIMARY KEY ACCESS_LEV N 2 LEVEL OF ACCESS
 ACC_DESCR A 20 DESCRIPTION OF ACCESS
 LEVEL
 CODE_STAT A 1 ACCESS CODE STATUS

DATA FILE : ADVERTISING AGENCY - ADV_AGY

ATTRIBUTES : FIELD TYPE SIZE DESCRIPTION

PRIMARY KEY AGENCY_CODE A 3 AGENCY CODE
 AGEN_DESC A 30 NAME OF AGENCY
 CODE_STAT A 1 AGENCY CODE STATUS

DATA FILE : AGENT REPRESENTATIVES - AGT_REP

ATTRIBUTES : FIELD TYPE SIZE DESCRIPTION

PRIMARY KEY AGENT_CODE A 5 AGENT CODE
SECOND. KEY AGENT_REP A 30 NAME OF COMPANIES
 REPRESENTED BY AGENT
 REP_ADDR1 A 30 ADDRESS.....
 REP_ADDR2 A 30
 REP_ADDR3 A 30
 CODE_STAT A 1 AGENT CODE STATUS

DATA FILE : AGENT SERVICES - AGENT_SRV

ATTRIBUTES : FIELD TYPE SIZE DESCRIPTION

PRIMARY KEY	AGENT_CODE	A	5	AGENT CODE
SECOND. KEY	SERV_NO	A	10	SERVICE NUMBER
	SERV_COST	N	14.2	SERVICE COST
	SERV_TAX	N	14.2	SERVICE TAX
	TOT_CAP	A	10	TOTAL CAPACITY
	FREQUENCY	A	5	FREQUENCY
	TRANSP_LINE	A	30	TRANSPORT LINE
	DISCH_PORT	A	30	PORT OF DISCHARGE

DATA FILE : PRODUCT PROFILE - APPAREL - APP_PROF

ATTRIBUTES : FIELD TYPE SIZE DESCRIPTION

PRIMARY KEY	HS_CODE	A	10	HARMONIZED SYSTEM CODE
	GROUP	A	10	APPAREL GROUP
	CATEGORY	A	10	PRODUCT CATEGORY CODE
	MERG_CATNG	A	10	MERGED CATEGORY #
	MERG_DESC	A	30	MERGED CATEGORY DESCRIPTION
	UOM	A	10	UNIT OF MEASURE
	TAR_NUM	A	10	TARIFF ITEM NUMBER

DATA FILE : AGREEMENT TYPE - ARG_TYPE

ATTRIBUTES : FIELD TYPE SIZE DESCRIPTION

PRIMARY KEY	CO_CODE	A	5	COMPANY CODE
	PRG_PER	A	15	PROGRAMME PERCENT

DATA FILE : ASSISTANCE

ATTRIBUTES : FIELD TYPE SIZE DESCRIPTION

PRIMARY KEY	ASS_TYPE	A	3	TYPE OF ASSISTANCE
	ASS_DESC	A	30	DESCRIPTION OF TYPE OF ASSISTANCE
	CODE_STAT	A	1	ASSISTANCE STATUS

DATA FILE : BANK CODE - BANK

ATTRIBUTES : FIELD TYPE SIZE DESCRIPTION

PRIMARY KEY	BANK_CODE	A	3	BANK CODE
	BK_NAME	A	30	BANK NAME
	ADDR1	A	25	BANK ADDRESS
	ADDR2	A	25	"
	CODE_STAT	A	1	BANK CODE STATUS

DATA FILE : BROKER MASTER - BROKER

ATTRIBUTES : FIELD TYPE SIZE DESCRIPTION

PRIMARY KEY	BROKER	A	5	CUSTOMS BROKER ID
	BROK_NAME	A	30	BROKER'S NAME
	BROK_ADDR	A	50	BROKER'S ADDRESS
	CODE_STAT	A	1	BROKER CODE STATUS

DATA FILE : BUSINESS TYPE - BUS_TYPE

ATTRIBUTES : FIELD TYPE SIZE DESCRIPTION

PRIMARY KEY	BUS_TYPE	A	3	CODE FOR TYPE OF BUSINESS
	BUS_DESC	A	30	DESCRIPTION OF TYPE OF BUSINESS
	CODE_STAT	A	1	BUSINESS CODE STATUS

DATA FILE : CERTIFICATE / SHIPMENT HEADER - CERT_HDR

ATTRIBUTES : FIELD TYPE SIZE DESCRIPTION

PRIMARY KEY	REFER_NO	A	10	REFERENCE NUMBER
	CONS_ID	A	10	CONSIGNEE ID
	VISA_NO	A	10	VISA NUMBER
	ORIGIN	A	3	ORIGIN OF GOODS
	DESTIN	A	3	DESTINATION OF GOODS
	FOB_JA	N	10.2	FREIGHT ON BOARD
	BIN_NO	A	10	BIN NUMBER
	QTY_UNITS	N	12	NUMBER OF UNITS
	WGHT	N	10	WEIGHT OF SHIPMENT
	VAL_ADD	N	12.2	VALUE ADDED
	MAT_VAL	N	12.2	MATERIAL VALUE
	UNIT_CST	N	12.2	UNIT COST (fob/qty)
	TOT_PKG	N	10	NO. OF PACKAGES
	MARKS	A	20	DISTINGUISHING MARKS
	INV_NO	A	10	INVOICE NUMBER
	INV_AMT	N	14.2	INVOICE AMOUNT
	PURCHASER	A	30	PURCHASER OF GOODS
	PURCH_ADR	A	40	PURCHASER ADDRESS
	EXPORT_NO	A	10	EXPORTER NUMBER
	CO_CODE	A	5	COMPANY CODE
	CERT_TYPE	A	5	CERTIFICATE TYPE (caribbean)
	CERT_DATE	D	10	CERTIFICATE DATE
	TRANS_MODE	A	5	MEANS OF TRANSPORT
	TRANS_NAME	A	30	NAME OF TRANSPORT (air ja)
	ROUTE	A	30	TRANSPORTATION ROUTE
	EXP_DATE	D	10	CERTIFICATE EXPIRY DATE
	CHARGES	N	12.2	CHARGES INCURRED

DATA FILE : CERTIFICATE / SHIPMENT DETAILS - CERT_DET

ATTRIBUTES : FIELD TYPE SIZE DESCRIPTION

PRIMARY KEY	REFER_NO	A	10	REFERENCE NUMBER
SECOND. KEY	PRODUCT	A	10	PRODUCT CODE
	QTY	N	10	QUANTITY OF PRODUCT
	AMOUNT	N	14.2	TOTAL COST
	ITEM_NO	A	3	ITEM NUMBER
	SHP_STAT	A	1	SHIPMENT STATUS (Y/N)
	SHP_DATE	D	10	SHIPMENT DATE

DATA FILE : CERTIFICATE PAYMENTS - CERT_PAY

ATTRIBUTES : FIELD TYPE SIZE DESCRIPTION

PRIMARY KEY	RECEIPT_NO	A	10	RECEIPT NUMBER
	REFER_NO	A	10	REFERENCE NUMBER
	PAYMENTS	N	12.2	PAYMENT AMOUNT
	PAYCERT_DATE	D	10	CERTIFICATE PAY. DATE

DATA FILE : CERTIFICATE TYPE - CERT_TYPE

ATTRIBUTES : FIELD TYPE SIZE DESCRIPTION

PRIMARY KEY

CERT_TYPE	A	5	TYPE OF CERTIFICATE
CERT_DESC	A	30	DESCRIPTION OF TYPE
CODE_STAT	A	1	STATUS OF CODE

DATA FILE : SPECIAL CLASS - CLASS

ATTRIBUTES : FIELD TYPE SIZE DESCRIPTION

PRIMARY KEY

CLASS	A	2	PROJECT CLASS
CL_DESC	A	30	CLASS DESCRIPTION
CODE_STAT	A	1	CLASS CODE STATUS

DATA FILE : SPECIAL CLASS / PROJECT - CLASS_PROJ

ATTRIBUTES : FIELD TYPE SIZE DESCRIPTION

CLASS	A	2	PROJECT CLASS
PROJ_NO	A	10	PROJECT CODE

DATA FILE : CONSIGNEE MASTER - CONSIGN

ATTRIBUTES : FIELD TYPE SIZE DESCRIPTION

PRIMARY KEY

CONS_ID	A	10	CONSIGNEE ID.
CONS_NAME	A	30	CONSIGNEE NAME
CONS_ADDR	A	40	CONSIGNEE ADDRESS
TELE_NO	A	14	TELEPHONE NUMBER
FAX_NO	A	14	FAX NUMBER
COUNT_CODE	A	3	COUNTRY CODE

DATA FILE : CONSIGNEE ACTIVITY - CSIGN_ACT

ATTRIBUTES : FIELD TYPE SIZE DESCRIPTION

PRIMARY KEY

CONS_ID	A	10	CONSIGNEE ID.
ACTV_CODE	A	5	ACTIVITY CODE

DATA FILE : CONTROL FILE - CONTROL

ATTRIBUTES : FIELD TYPE SIZE DESCRIPTION

PRIMARY KEY

SECTOR	A	5	SECTOR CODE
PROJ_NATURE	A	2	NATURE OF PROJECT
LST_NUM	N	4	LAST SEQUENTIAL NUMBER USED

DATA FILE : COMPANY ALLOCATION - CO_ALLOC**ATTRIBUTES : FIELD TYPE SIZE DESCRIPTION**

PRIMARY KEY	CO_CODE	A	5	COMPANY CODE
SECOND. KEY	HS_CODE	A	10	HARMONIZED SYSTEM CODE
	EXPORT_NO	A	10	EXPORTER NUMBER
	GROUP	A	10	APPAREL GROUP
	CATEGORY	A	10	PRODUCT CATEGORY CODE
	AMT_ALLOC	N	12.2	AMOUNT ALLOCATED
	AMT_USED	N	12.2	AMOUNT USED
	ALLOC_YEAR	N	4	ALLOCATION YEAR
	REQ_1ODATE	N	12.2	AMOUNT REQUESTED TO DATE

DATA FILE : COMPANY BROKERS - CO_BROKER**ATTRIBUTES : FIELD TYPE SIZE DESCRIPTION**

	CO_CODE	A	5	COMPANY CODE
	BROKER	A	5	CUSTOM BROKER ID

DATA FILE : COMPANY CLIENTS - CO_CLIENTS**ATTRIBUTES FIELD TYPE SIZE DESCRIPTION**

PRIMARY KEY	CO_CODE	A	5	COMPANY CODE
	CLIENT	A	30	MAJOR CLIENTS
	TYPE_CLIENT	A	1	TYPE OF CLIENT ("C" competitor, "D" distributor, "S" customer)

DATA FILE : COMPANY CODE - CO_CODE**ATTRIBUTES : FIELD TYPE SIZE DESCRIPTION**

PRIMARY KEY	CO_CODE	A	5	COMPANY CODE
	FNAME	A	30	CHRISTIAN NAME
	LNAME	A	30	SURNAME / BUSINESS NAME
	MIDDLE	A	1	MIDDLE INITIAL
	CO_ADDR1	A	30	ADDRESS
	CO_ADDR2	A	30	"
	CO_ADDR3	A	30	"
	MA_ADDR1	A	30	MAILING ADDRESS
	MA_ADDR2	A	30	"
	MA_ADDR3	A	30	"
	PARISH	A	3	PARISH LOCATION
	TELEPHONE	A	30	TELEPHONE NO.
	FAX_NO	A	30	FAXIMILE NO.
	MAIL_LST	L	1	ON MAILING LIST - (Y/N)
	CO_STATUS	A	3	COMPANY STATUS (active)

DATA FILE : COMPANY EXPORT PROGRAMMES - CO_EXPRG

ATTRIBUTES : FIELD TYPE SIZE DESCRIPTION

PRIMARY KEY	CO_CODE	A	5	COMPANY CODE
SECOND. KEY	EXPRG_CODE	A	5	EXPORT PROGRAMME
	JAMPRO_CODE	A	10	JAMPRO CODE
	PRG_PERCENT	N	4.2	PERCENTAGE FOR PROGRAMME

DATA FILE : INVESTOR / COMPANY - CO_MASTER

ATTRIBUTES : FIELD TYPE SIZE DESCRIPTION

PRIMARY KEY	CO_CODE	A	5	COMPANY CODE
	OWN_STRUC	A	2	OWNERSHIP STRUCTURE (JV,FR,LC)
	ORIGIN	A	3	COUNTRY OF ORIGIN
	CONTACT	A	40	CONTACT PERSON
	CONTACT_TITLE	A	30	JOB TITLE
	DATE_ESTAB	D	10	DATE ESTABLISHED
	START_OP	D	10	OPERATION START DATE
	BUS_TYPE	A	3	TYPE OF BUSINESS (film)
	LEGAL_STAT	A	3	LEGAL STATUS
	SECTOR	A	5	PRIMARY SECTOR
	BANK_CODE	A	3	BANK CODE
	FIN_SOURCE	A	30	FINANCE SOURCE
	JV_SOUGHT	L	1	JOINT VENTURE SOUGHT
	JV_DESC	A	100	DESCRIPTION
	EXPORT_EXP	A	100	EXPORT EXPERIENCE
	EXP_STDT	D	10	EXPORT START DATE
	JV_OFFERED	L	1	OFFER DESCRIPTION
	CO_GOALS	A	100	COMPANY GOALS
	CO_CONSTRAINTS	A	100	COMPANY CONSTRAINTS
	FREEZONE_INT	A	1	FREEZONE INTERESTS
	FREEZONE_DESC	A	100	FREEZONE INTERESTS
	SAMPLES_RECV	L	1	PRODUCT SAMPLES
	ASST_REQD	A	5	TYPE OF ASSISTANCE
	CO_STATUS	A	3	COMPANY STATUS(active)
	COMMENTS	A	40	COMMENT
	UNIONIZED	L	1	UNIONIZED (Y/N)
	NO_SHIFTS	N	2	NUMBER OF SHIFTS
	PROJ_NOSHF	N	2	PROJECTED NUMBER OF SHIFT
	SUB_CON	L	1	SUB-CONTRACT - Y/N
	AFF_COMP	A	60	AFFILIATED COMPANIES
	CAP_INVJ	N	14.2	CAPITAL INVESTMENT JS
	CAP_INVUS	N	14.2	CAPITAL INVESTMENT US\$
	EXCH_RATE	N	7.4	FOREIGN EXCHANGE RATE
	EQUITY	N	14.2	EQUITY AMOUNT
	LOAN	N	14.2	LOAN AMOUNT
	PROJ_CAP	N	14.2	PROJECTED CAPITAL
	PROJ_YEAR	N	4	PROJECTION YEAR
	GENDER	A	1	
	AGE	N	2	

DATA FILE : COMPANY MANUFACTURER - CO_MANU

ATTRIBUTES : FIELD TYPE SIZE DESCRIPTION

MANU_CODE	A	5	MANUFACTURER CODE
CO_CODE	A	5	COMPANY CODE

DATA FILE : COMPANY MARKET DETAILS - CO_MRKT

ATTRIBUTES : FIELD TYPE SIZE DESCRIPTION

PRIMARY KEY	CO_CODE	A	5	COMPANY CODE
SECOND. KEY 1	DESTIN	A	3	DESTINATION MARKET
SECOND KEY 2	PRODUCT	A	5	PRODUCT CODE
	MANUF_NO	A	5	MANUFACTURER'S NO.
	PERCENT_EXP	N	3	EXPORT PERCENTAGE
	MRKT_REP	A	30	MARKET REPRESENTATION
	MAIN_COMP	A	30	MAIN COMPETITION
	MAIN_DISB	A	30	MAIN DISTRIBUTORS
	MAIN_CUST	A	30	MAIN CUSTOMERS

DATA FILE : COMPANY OFFICERS - CO_OFFICER

ATTRIBUTES : FIELD TYPE SIZE DESCRIPTION

PRIMARY KEY	CO_CODE	A	5	COMPANY CODE
	SURNAME	A	30	
	FIRST_NAME	A	30	
	MID_INIT	A	2	MIDDLE INITIAL
	POSITION	A	3	POSITION HELD

DATA FILE : COUNTRY OF OWNERS - CO_OWNER

ATTRIBUTES : FIELD TYPE SIZE DESCRIPTION

PRIMARY KEY	CO_CODE	A	5	COMPANY CODE
	COUNT_CODE	A	3	COUNTRY
	PERCENTAGE	N	3	PERCENTAGE OWNED
	JAMPRO_CODE	A	10	PROJECT CODE

DATA FILE : COMPANY PAYROLL - CO_PAYROLL

ATTRIBUTES : FIELD TYPE SIZE DESCRIPTION

PRIMARY KEY	CO_CODE	A	5	COMPANY CODE
	PAY_DATE	D	10	PAYROLL DATE
	TOTAL	N	14.2	PAYROLL TOTAL

DATA FILE : COMPANY SALES - CO_SALES

ATTRIBUTES : FIELD TYPE SIZE DESCRIPTION

PRIMARY KEY

CO_CODE	A	5	COMPANY CODE
ANN_SALESJA	N	14.2	ANNUAL SALES(JS)
ANN_SALESUS	N	14.2	ANNUAL SALES(US\$)
YEAR	N	4	YEAR FOR SALES DATA
EXPORTSJA	N	14.2	EXPORTS (JS)
EXPORTSUS	N	14.2	EXPORTS(US\$)

DATA FILE : COMPANY STAFF - CO_STAFF

ATTRIBUTES : FIELD TYPE SIZE DESCRIPTION

PRIMARY KEY

CO_CODE	A	5	COMPANY CODE
EMP_CAT	A	5	EMPLOYMENTCATEGORY
PRES_PERM_MALE	N	7	PERMANENT MALE
PRES_PERM_FEM	N	7	" FEMALE
PRES_TOT_PERM	N	7	TOTAL NO. PERM. STAFF
PRES_TEMP_MALE	N	7	TEMPORRY MALES
PRES_TEMP_FEM	N	7	" FEMALE
PRES_TOT_TEMP	N	7	TOTAL NO. TEMP STAFF
PROJ_PERM_MALE	N	7	PROJECTED PERM MALES
PROJ_PERM_FEM	N	7	PROJECTED PERM FEMALE
PROJ_TCT_PERM	N	7	PROJECTED PERM.NO.
PROJ_TEMP_MALE	N	7	PROJECTED TEMP MALE
PROJ_TEMP_FEM	N	7	PROJECTED TEMP FEMALE
PROJ_TOT_TEMP	N	7	PROJECTED TEMP STAFF
DATE_ENT	D	10	DATE ENTERED

DATA FILE : COMPANY SUB-SECTORS - CO_SUBSECT

ATTRIBUTES : FIELD TYPE SIZE DESCRIPTION

PRIMARY KEY

CO_CODE	A	5	COMPANY CODE
SUB_SECT	A	3	SUB-SECTOR CODE
SECT	A	5	SECTOR CODE

**DATA FILE : CONTRACTORS & SUPPLIERS INFORMATION -
CONTSUPP**

ATTRIBUTES : FIELD TYPE SIZE DESCRIPTION

PRIMARY KEY

REFER_NO	N	6	CONTRACTORS REFERENCE NUMBER
SECTOR	A	5	SECTOR / AREA OF BUSINESS
BUSIN_TYPE	A	30	SPECIALIZATION / GENERAL COMMENTS
SUPPNAME	A	30	SUPPLIERS NAME
SUPPADDR	A	60	SUPPLIERS ADDRESS
SUPP_TELE	A	14	SUPPLIERS TELEPHONE NO.
SUPP_FAX	A	14	SUPPLIERS FAX NO.
LAST_CLIENT	A	30	LAST CLIENT RECOMMENDED
DATE_RECOM	D	10	DATE OF LAST RECOMMENDATION
LOC_AGENT	A	30	NAME OF LOCAL AGENT
LOC_AG_ADDR	A	60	LOCAL AGENT ADDRESS
LOC_AG_TELE	A	14	LOCAL AGENT TELEPHONE #
LOC_AG_FAX	A	14	LOCAL AGENT FAX #

DATA FILE : CORRESPONDENCE CATEGORY - CORCAT

ATTRIBUTES : FIELD TYPE SIZE DESCRIPTION

PRIMARY KEY

CCATEGOR	N	2	CORRESPONDENCE CATEGORY CODE
COR_DESC	A	20	CORRESPONDENCE CATEGORY DESCRIPTION
CODE_STAT	A	1	CATEGORY CODE STATUS

DATA FILE : EMPLOYMENT CATEGORY - EMP_CAT

ATTRIBUTES : FIELD TYPE SIZE DESCRIPTION

PRIMARY KEY CAT_CODE A 5 CATEGORY CODE (clerical, gm)
 CAT_DESC A 30 DESCRIPTION OF CATEGORY
 CODE_STAT A 1 CATEGORY CODE STATUS

DATA FILE : ENQUIRIES

ATTRIBUTES : FIELD TYPE SIZE DESCRIPTION

PRIMARY KEY CO_CODE A 5 COMPANY CODE
 ENQ_TYPE A 3 ENQUIRY TYPE(serious)
 ENQ_DATE D 10 ENQUIRY DATE
 OFFICER A 30 RESPONSIBLE OFFICER
 INTEREST A 3 AREA OF INTEREST (farming)
 CONTACT_MODE A 30 MODE OF CONTACT(letter)
 NEXT_APP D 10 NEXT APPOINTMENT
 REMARKS A 60
 REFERRED A 20 HOW REFERRED
 JAMPRO_CODE A 10 PROJECT CODE
 REQ_ASS A 40 REQUIRED ASSISTANCE
 PROJ_NATURE A 3 PROJECT NATURE CODE
 SECTOR A 5 SECTOR CODE
 SUB_SECT A 3 SUB-SECTOR CODE
 DIV_CODE A 3 DIVISION CODE
 PRODUCT A 10 PRODUCT CODE
 BUS_TYPE A 3 TYPE OF BUSINESS
 STATUS A 3 CURRENT STATUS
 PREV_STAT A 3 PREVIOUS STATUS
 COUNT_CODE A 3 COUNTRY CODE

DATA FILE : ENQUIRY STATUS - ENQ_STAT

ATTRIBUTES : FIELD TYPE SIZE DESCRIPTION

PRIMARY KEY ENQ_STATUS A 3 STATUS CODE
 ENQ_DESC A 30 STATUS NAME
 CODE_STAT A 1 STATUS CODE STATUS

DATA FILE : EXPORT / IMPORT PRICE - EX_IM_PRC

ATTRIBUTES : FIELD TYPE SIZE DESCRIPTION

PRIMARY KEY	PROD_CODE	A	5	PRODUCT CODE
SECOND. KEY	MARKET	A	3	MARKET CODE
	GRADE	A	2	PRODUCT GRADE
	FRDATE	D	10	FROM DATE
	TODATE	D	10	TO DATE
	ORIGIN	A	3	COUNTRY OF ORIGIN
	DESTIN	A	3	DESTINATION COUNTRY
	LOWR_PRC	N	14.2	LOWER PRICE
	ACT_PRC	N	14.2	ACTUAL PRICE
	UPPR_PRC	N	14.2	UPPER PRICE
	EXP_QTY	N	10	EXPORT QUANTITY
	TRANS_MODE	A	20	TRANSPORTATION
	DESTIN	A	3	DESTINATION

DATA FILE : EXPORTER TO CONSIGNEE - EXP_CONS

ATTRIBUTES : FIELD TYPE SIZE DESCRIPTION

PRIMARY KEY	CO_CODE	A	5	COMPANY CODE
SECOND. KEY	CONS_ID	A	10	CONSIGNEE ID.
	EXPORT_NO	A	10	EXPORTER NUMBER
	PRODUCT	A	10	PRODUCT CODE

DATA FILE : EXPORTER DATA - EXPORTER

ATTRIBUTES : FIELD TYPE SIZE DESCRIPTION

PRIMARY KEY	EXPORT_NO	A	10	EXPORTER NUMBER
	CO_CODE	A	5	COMPANY CODE
	JAMPRO_CODE	A	3	PROJECT CODE
	EXP_MGN	A	30	EXPORT MANAGER
	ID_NO	A	10	IDENTIFICATION NUMBER
	ID_CODE	A	3	TYPE OF IDENTIFICATION
	JBS_NO	A	9	JAMAICA BUREAU OF STANDARDS NUMBER
	MOA_NO	A	9	MINISTRY OF AGRICULTURE NUMBER
	BENO_NO	A	10	BENO NUMBER
	NO_DRIVERS	N	10	NUMBER OF DRIVERS COMPANY HAS
	REG_NO	N	10	EXPORTER REGISTRATION NUMBER
	REG_DATE	D	10	EXPORTER REGISTRATION DATE
	RECEIPT_NO	A	10	RECEIPT NUMBER
	FREE_CODE	A	3	FREEZONE AREA

DATA FILE : EXPORT PROGRAMME - EXPORT_PRG

ATTRIBUTES : FIELD TYPE SIZE DESCRIPTION

PRIMARY KEY	EXPRG_CODE	A	5	EXPORT PROGRAM
	EXPRG_NAME	A	30	EXPORT PROGRAMME NAME
	CODE_STAT	A	1	CODE STATUS

DATA FILE : ERROR MESSAGE - ERR_MSGS

ATTRIBUTES : FIELD TYPE SIZE DESCRIPTION

PRIMARY KEY	MSG_NO	N	3	MESSAGE NUMBER
	MESSAGE	A	30	

DATA FILE : PRODUCTION FACILITY DETAILS - FAC_DET

ATTRIBUTES : FIELD TYPE SIZE DESCRIPTION

PRIMARY KEY	CO_CODE	A	5	COMPANY CODE
	FACILITY	A	5	PRODUCTION FACILITIES (e.g. factory - a standard name)
SECOND. KEY	SUB_FAC	A	20	FACILITIES WITHIN THE MAIN FACILITY e.g. - sewing area in factory
	SUB_SIZE	N	9.2	SIZE OF THESE FACILITIES

DATA FILE : FACILITY

ATTRIBUTES : FIELD TYPE SIZE DESCRIPTION

PRIMARY KEY	FACILITY	A	5	OPERATION FACILITY
	DESC_FAC	A	20	DESCRIPTION
	CODE_STAT	A	1	FACILITY CODE STATUS

DATA FILE : FILE INFORMATION - FILEINFO**ATTRIBUTES : FIELD TYPE SIZE DESCRIPTION**

PRIMARY KEY	REFER_NOFILE	A	15	REFERENCE NUMBER
	FILE_NO	N	8	SEQUENTIAL FILE NO.
	ACCESS_LEV	N	2	LEVEL OF ACCESS OF DOCUMENT
	FILE_NAME	A	80	FILE NAME
	KEYWORD	A	20	FILE KEYWORD
	FILE_DATE	D	10	DATE OF ENTRY
	FILE_TYPE	N	2	FILE TYPE
	VOLUM_NO	A	10	VOLUME NUMBER
	FILE_STAT	A	1	FILE STATUS
	FILE_LOCA	A	40	FILE LOCATION
	FILE_DESC	A	40	DESCRIPTION OF FILE
	GEN_COMM	A	100	GENERAL COMMENTS

DATA FILE : FILE TYPE - FILTYPE**ATTRIBUTES : FIELD TYPE SIZE DESCRIPTION**

PRIMARY KEY	FILE_TYPE	N	2	FILE TYPE CODE
	FILEDESC	A	30	FILE TYPE DESCRIPTION
	CODE_STAT	A	1	FILE TYPE CODE STATUS

DATA FILE : FILM ENQUIRY - FILM_ENQ**ATTRIBUTES : FIELD TYPE SIZE DESCRIPTION**

PRIMARY KEY	CO_CODE	A	5	COMPANY CODE
SECOND. KEY	ENQ_NO	N	5	ENQUIRY NUMBER
	ADV_AGENCY	A	3	ADVERTISING AGENCY
	SCRIPT RECEIVED	L	1	FILM SCRIPT RECEIVED
	SCOUT_DATE	D	10	
	SHOOT_DATE	D	10	FILM SHOOT DATE
	FIN_METHOD	A	30	METHOD OF FINANCE
	BUDGET	N	14.2	BUDGET
	EXEC_PROD	A	20	EXECUTIVE PRODUCER
	PRODUCER	A	20	PRODUCER
	DIRECTOR	A	20	DIRECTOR
	WRITER	A	20	WRITER
	LOC_MGNR	A	20	LOCATION MANAGER
	PROD_DESIG	A	20	PRODUCTION DESIGNER
	PROD_MGNR	A	20	PRODUCTION MANAGER
	KEY_CAST	A	40	
	INFO_SENT	A	40	INFORMATION RECEIVED
	OTHER	A	20	

DATA FILE : FILM EXPENDITURE - FILM_EXP**ATTRIBUTES : FIELD TYPE SIZE DESCRIPTION**

PRIMARY KEY	FIELD	TYPE	SIZE	DESCRIPTION
	PROJ_CODE	A	5	PROJECT CODE
	HOTEL	N	14.2	HOTEL COST
	VILLA	N	14.2	VILLA COST
	PRV_RENT	N	14.2	PRIVATE RENTAL COST
	ALL_INCL	N	14.2	ALL INCLUSIVE COSTS
	SECURITY	N	14.2	SECURITY COSTS
	PER_DIEM	N	14.2	PER DIEM AMOUNT
	PRE_PROD	N	14.2	PRE PRODUCTION EXPENSES
	WARDROBE	N	14.2	WARDROBE COST
	VEH_COST	N	14.2	VEHICLE COSTS
	EQUIP_RENT	N	14.2	EQUIPMENT RENTAL
	LOC_XTRA	N	14.2	LOCAL EXTRAS
	POST_PROD	N	14.2	POST PRODUCTION
	SPEC_EFF	N	14.2	SPECIAL EFFECTS
	CONSTR	N	14.2	CONSTRUCTION COSTS
	LOC_FEES	N	14.2	LOCAL FEES
	CATER	N	14.2	CATERING COST
	PROPS	N	14.2	PROPS & SET DRESSING
	PROJ_COST	N	14.2	COST OF PROJECTION
	CAST_AGFEES	N	14.2	CASTING , TALENT & AGENCY FEES ETC.
	PROD_TECHCR	N	14.2	PRODUCTION & TECHNICAL CREW
	MISC	N	14.2	MISCELLANEOUS
	SHOOT_DAYS	N	4	SHOOT DAYS
	SAL_JAM	L	1	SALARY OF JAMAICAN

DATA FILE : FILM LIBRARY INFORMATION - FILM_LIBR**ATTRIBUTES : FIELD TYPE SIZE DESCRIPTION**

PRIMARY KEY	FIELD	TYPE	SIZE	DESCRIPTION
	REFER_NO	A	15	REFERENCE NUMBER
	NEGA_NO	N	8	NEGATIVE NUMBER
	ACCESS_LEV	N	2	LEVEL OF ACCESS OF DOCUMENT
	FILM_NAME	A	80	FILM / PHOTOGRAPH NAME
	FILM_KEY	A	20	FILM KEYWORD
	FILM_DATE	D	10	DATE OF ENTRY
	FILM_TYPE	N	2	FILM TYPE
	VOLUM_NO	A	10	VOLUME NUMBER
	FILM_STAT	A	1	FILM STATUS
	FILM_LOCA	A	40	FILM LOCATION
	FILM_DESC	A	40	DESCRIPTION OF FILM
	GEN_COMM	A	100	GENERAL COMMENTS

DATA FILE : **FILM TYPE - FILM_TYPE**

ATTRIBUTES : **FIELD** **TYPE** **SIZE** **DESCRIPTION**

PRIMARY KEY FILM_TYP N 2 FILM TYPE CODE
 FILM_TYP_DES A 30 FILM TYPE DESCRIPTION
 CODE_STAT A 1 FILM TYPE CODE STATUS

DATA FILE : **FREEZONE CODE - FREE_CODE**

ATTRIBUTES : **FIELD** **TYPE** **SIZE** **DESCRIPTION**

PRIMARY KEY FREE_CODE A 3 FREEZONE CODE
 FREE_NAME A 30 FREEZONE NAME

DATA FILE : **FREQUENCY - FREQUENCY**

ATTRIBUTES : **FIELD** **TYPE** **SIZE** **DESCRIPTION**

PRIMARY KEY FREQ_CODE A 5 FREQUENCY CODE
 FREQ_DESC A 30 FREQUENCY DESCRIPTION
 CODE_STAT A 1 FREQUENCY CODE STATUS

DATA FILE : **ADDITIONAL FUNDING - FUND_ADD**

ATTRIBUTES : **FIELD** **TYPE** **SIZE** **DESCRIPTION**

PRIMARY KEY FUND_AGY A 5 FUNDING AGENCY CODE
SECOND. KEY PRG_CODE A 5 PROGRAMME CODE
 DATE_REC D 10 START DATE
 END DATE D 10 END DATE
 ADD_AMT N 14.2 ADDITIONAL AMOUNT
 DESC_ADD A 100 COMMENTS / DESCRIPTION
 REC_NUM N RECORD NUMBER
 CODE_STAT

DATA FILE : **FUNDING PROGRAMME - FUND_AGENT**

ATTRIBUTES : **FIELD** **TYPE** **SIZE** **DESCRIPTION**

PRIMARY KEY FUND_AGY A 5 FUNDING AGENCY CODE
 FUND_NAME A 30 AGENCY NAME
 FUND_ADDR1 A 30 AGENCY ADDRESS
 FUND_ADDR2 A 30
 CONTACT A 35 CONTACT PERSON
 TITLE A 15 JOB TITLE OF CONTACT
 CODE_STAT A 1 AGENCY CODE STATUS

DATA FILE : FUNDING PROGRAMME - FUND_PRG

ATTRIBUTES : FIELD TYPE SIZE DESCRIPTION

PRIMARY KEY

PRG_CODE	A	5	PROGRAMME CODE
PRG_NAME	A	30	PROGRAMME NAME
FUND_AGY	A	5	FUNDING AGENCY
START_FUND	D	10	FUNDING PRG. START DATE
END DATE	D	10	END DATE
SECTOR	A	5	SECTOR AFFECTED
PRG_VAL	N	14.2	PROGRAMME VALUE
LOAN_REQ	A	100	LOAN REQUIREMENTS
DISB_TODATE	N	14.2	AMOUNT DISBURSED TO DATE
CODE_STAT	A	1	CODE STATUS

DATA FILE : PRODUCT GROUP CODE - GROUP_CODE

ATTRIBUTES : FIELD TYPE SIZE DESCRIPTION

PRIMARY KEY

GROUP_CODE	A	10	PRODUCT GROUPING CODE
GROUP_DESC	A	30	GROUP DESCRIPTION
CAT_CODE	A	10	CATEGORY CODE
CAT_DESC	A	30	CATEGORY DESCRIPTION

DATA FILE : LEGAL STATUS CODES - LEG_STAT

ATTRIBUTES : FIELD TYPE SIZE DESCRIPTION

PRIMARY KEY

LEGAL_STAT	A	3	LEGAL STATUS OF COMPANY
DESC_LEGAL	A	30	DESCRIPTION OF STATUS
CODE_STAT	A	1	LEGAL CODE STATUS

DATA FILE : LOCATION CODE - LOC_CODE

ATTRIBUTES : FIELD TYPE SIZE DESCRIPTION

PRIMARY KEY

LOC_CODE	A	3	PARISH/LOCATION CODE
LOC_DESC	A	30	NAME OF PARISH
CODE_STAT	A	1	LOCATION CODE STATUS

DATA FILE : MAILING LIST INFORMATION - MAILLIST

ATTRIBUTES : FIELD TYPE SIZE DESCRIPTION

PRIMARY KEY	MAILNAME	A	30	PERSON / COMPANY NAME
SECOND. KEY	MAILADDR	A	60	ADDR OF PERSON / COMPANY
	CONTPERS	A	30	CONTACT PERSC ' AT CO.
	MAILTELE	A	14	TELEPHONE NUMBER
	MAIL_FAX	A	14	FAX NUMBER
	SECTOR	A	5	SECTOR / AREA OF BUSINESS

DATA FILE : MANUFACTURER CODE - MANU_CODE

ATTRIBUTES : FIELD TYPE SIZE DESCRIPTION

PRIMARY KEY	MANU_NO	A	10	MANUFACTURER CODE
	MANU_NAME	A	30	MANUFACTURER NAME
	MANU_ADDR1	A	30	MANUFACTURER ADDRESS
	MANU_ADDR2	A	30	MANUFACTURER ADDRESS2

DATA FILE : MAIL TYPE - MAILTYPE

ATTRIBUTES : FIELD TYPE SIZE DESCRIPTION

PRIMARY KEY	MAIL_TYP	A	3	MAIL TYPE CODE
	MAIL_DES	A	30	DESCRIPTION OF MAIL TYPE
	CODE_STAT	A	1	MAIL TYPECODE STATUS

DATA FILE : FILE MOVMENT INFORMATION - MOVFILE

ATTRIBUTES : FIELD TYPE SIZE DESCRIPTION

PRIMARY KEY	FILE_NO	N	8	SEQUENTIAL FILE NUMBER
	DIV_CODE	A	3	DIVISION RECEIVING FILE
	TC_OFFICER	A	20	OFFICER RECEIVING FILE
	FR_OFFICER	A	20	OFFICER RETURNING FILE
	OUT_DATE	D	10	DATE OUT
	IN_DATE	D	10	DATE IN

DATA FILE : MARKET CODE - MRK_CODE

ATTRIBUTES : FIELD TYPE SIZE DESCRIPTION

PRIMARY KEY	MARKET_CODE	A	3	MARKET CODE
	MARK_DESC	A	30	NAME OF MARKET
	CODE_STAT	A	1	MARKET CODE STATUS

DATA FILE : OFFICER ACTIVITY - OFF_ENQ

ATTRIBUTES : FIELD TYPE SIZE DESCRIPTION

PRIMARY KEY	OFFICER	A	20	RESPONSIBLE OFFICER
	CO_CODE	A	5	COMPANY CODE
	JAMPRO_CODE	A	10	PROJECT CODE
	DIV_CODE	A	3	DIVISION CODE
	VISITOR	A	20	NAME OF VISITOR

DATA FILE : OFFICER ACTIVITY DETAILS - OFF_DET

ATTRIBUTES : FIELD TYPE SIZE DESCRIPTION

PRIMARY KEY	OFFICER	A	20	RESPONSIBLE OFFICER
	JAMPRO_CODE	A	10	PROJECT CODE
	ACTION	A	3	ACTION TAKEN
	OFF_FOLLOW	A	60	OFFICER FOLLOW UP
	INV_FOLLOW	A	60	INVESTOR FOLLOW UP
	ACT_STAT	A	3	ACTIVITY / ACTION STATUS
	ACTIVITY_TYPE	A	10	ACTIVITY TYPE(client contact)
	ACTIV_DATE	D	10	DATE OF ACTIVITY
	TIME	A	5	ACTIVITY TIME
	ACTIVITY	A	50	PROMOTIONAL ACTIVITY
	ACTIV_OUT	A	30	OUTCOME OF ACTIVITY

DATA FILE : OPPORTUNITY CONTROL - OPP_CNTRL

ATTRIBUTES : FIELD TYPE SIZE DESCRIPTION

PRIMARY KEY	OPP_TYPE	A	5	OPPORTUNITY TYPE
	SECTOR	A	5	SECTOR CODE
	NUMBER	N	5	SEQUENTIAL NUMBER

DATA FILE : OWNERSHIP STRUCTURE - OWN_STRUC

ATTRIBUTES : FIELD TYPE SIZE DESCRIPTION

PRIMARY KEY	OWN_STRUC	A	2	OWNER. STRUCTURE CODE
	STRUC_DESC	A	30	DESC. OF STRUCTURE

DATA FILE : PROGRAM PASSWORD PROTECTION - PASS_PROT

ATTRIBUTES : FIELD TYPE SIZE DESCRIPTION

PRIMARY KEY	PRG_NAME	A	10	PROGRAM NAME
	PASSWORD	A	10	PASSWORD

DATA FILE : POLICIES / AGREEMENTS - POL_AGRM

ATTRIBUTES : FIELD TYPE SIZE DESCRIPTION

PRIMARY KEY	POL_NO	A	5	AGREEMENT NO.
	PCL_DESCR	A	30	POLICY DESCRIPTION
	PARTY_A	A	10	PARTY IN AGREEMENT
	PARTY_B	A	10	PARTY IN AGREEMENT
	AGR_DATE	D	10	EFFECTIVE DATE OF AGREEMENT
	SECTOR	A	5	SECTOR AFFECTED
	MARKET	A	3	MARKET AFFECTED
	PRODUCT	A	10	PRODUCT AFFECTED
	TERMS	A	200	TERMS OF THE AGREEMENT

DATA FILE : PUBLIC RELATIONS INFORMATION - PRINFO

ATTRIBUTES : FIELD TYPE SIZE DESCRIPTION

PRIMARY KEY	REFER_NO	A	15	REFERENCE NUMBER
SECOND. KEY	FILE_NO	N	8	SEQUENTIAL FILE NO.
	ACCESS_LEV	N	2	LEVEL OF ACCESS OF DOCUMENT
	FILE_NAME	A	80	FILE NAME
	KEYWORD	A	20	FILE KEYWORD
	FILE_DATE	D	10	DATE OF ENTRY
	FILE_TYPE	N	2	FILE TYPE
	VOLUM_NO	A	10	VOLUME NUMBER
	FILE_STAT	A	1	FILE STATUS
	FILE_LOCA	A	40	FILE LOCATION
	FILE_DESC	A	40	DESCRIPTION OF FILE
	GEN_COMM	A	100	GENERAL COMMENTS

DATA FILE : COMPANY PRODUCTION CAPACITY - PROD_CAP

ATTRIBUTES : FIELD TYPE SIZE DESCRIPTION

PRIMARY KEY1	CO_CODE	A	5	COMPANY CODE
PRIMARY KEY2	PROD_CODE	A	5	PRODUCT CODE
	ANN_PROD_VAL	N	14.2	PRODUCTION VALUE
	ANN_PROD_QTY	N	10	QUANTITY PRODUCED
	PROJ_PROD_QTY	N	10	PROJECTED PRODUCTION
	PROJ_DATE	D	10	PROJECTION DATE
	RAW_MATERIALS	A	100	RAW MATERIALS USED
	LOCAL_INPUT	N	3	PERCENT OF LOCAL INPUT
	FIRST_PROD	D	10	DATE FIRST PRODUCED
	EQUIP_AGE	N	4	AGE OF MAIN EQUIPMENT
	DEV_ASSIST	A	30	DEVELOPMENT ASSISTANCE
	POSS_INC	N	3	POSSIBLE INCREASE
	PROD_CAP	N	10	PRODUCTION CAPACITY
	DELIV_TRMS	A	100	DELIVERY TERMS
	PAY_TERMS	A	100	PAYMENT TERMS
	LEAD_TIME	N	4	LEAD TIME IN DAYS
	MIN_QTY	N	5	MINIMUM ORDER AMOUNT
	MAX_QTY	N	7	MAXIMUM ORDER QUANTITY
	FOB_JA	N	10.2	FREIGHT ON BOARD -JA\$
	FOB_US	N	10.2	FREIGHT ON BOARD - US\$
	TRADEMARK	A	10	PRODUCT TRADEMARK
	SERIAL_NO	A	10	PRODUCT SERIAL NUMBR
	CUR_OFF	N	10.2	CURRENT OFFICE SPACE
	PROJ_OFF	N	10.2	PROJECTED OFFICE SPACE
	CUR_LAND	N	10.2	CURRENT LAND SPACE
	PROJ_LAND	N	10.2	PROJECTED LAND SPACE

DATA FILE : PRODUCT CODE - PROD_CODE

ATTRIBUTES : FIELD TYPE SIZE DESCRIPTION

PRIMARY KEY	PROD_CODE	A	10	JAMPRO PRODUCT CODE
	HS_CODE	A	10	HARMONISED SYSTEM CODE
	PROD_DESC	A	30	DESCRIPTION OF PRODUCT
	GROUP	A	5	PRODUCT GROUP
	CATEGORY	A	10	NAME OF CATEGORY
	UNITS	A	5	UNIT OF MEASURE
	CONV_FACTOR	N	5.2	CONVERSION FACTOR
	CODE_STAT	A	1	PRODUCT CODE STATUS

DATA FILE : COMPANY PRODUCTION FACILITY PROD_FAC

ATTRIBUTES : FIELD TYPE SIZE DESCRIPTION

PRIMARY KEY	CO_CODE	A	5	COMPANY CODE
	FACILITY	A	4	PRODUCTION FACILITIES (e.g. factory)
	NO_MACHINE	N	5	NUMBER OF MACHINES
	FAC_SIZE	N	5	FACILITY SIZE
	FAC_ADDR	A	40	ADDRESS OF FACILITY
	PARISH	A	3	PARISH LOCATION
	PHONE_NO	A	14	TELEPHONE NUMBER
	FAX_NO	A	14	FAX. NUMBER
	NO_EMPL	N	5	NUMBER OF EMPLOYEES
	NO_SHIFT	N	5	NUMBER OF SHIFTS
	TELEX_NO	A	15	TELEX NUMBER
	REC_NUM	N	5	RECORD NUMBER

DATA FILE : PRODUCT MATERIAL - PROD_MAT

ATTRIBUTES : FIELD TYPE SIZE DESCRIPTION

PRIMARY KEY1	PRODUCT	A	10	PRODUCT CODE
PRIMARY KEY2	CO_CODE	A	5	COMPANY CODE
	MATERIAL	A	20	TYPE OF MATERIAL
	MAT_QTY	N	10.2	QUANTITY OF FABRIC USED
	UNIT_PRC	N	12.2	UNIT PRICE FOR FABRIC
	LOCAL	L		LOCALLY ACQUIRED
	SOURCE	A	20	FABRIC SOURCE
	COMMENTS	A	30	COMMENTS

DATA FILE : COMPANY PRODUCT SALES - PROD_SALES

ATTRIBUTES : FIELD TYPE SIZE DESCRIPTION

PRIMARY KEY1	CO_CODE	A	5	COMPANY CODE
PRIMARY KEY2	HS / PROD. CODE	A	10	PRODUCT OR HS CODE
	SALES_YR	N	10	SALES YEAR
	DOM_SALE	N	12.2	DOMESTIC SALES

DATA FILE : OPPORTUNITY PROFILE DETAILS - PROF_DET

ATTRIBUTES	FIELD	TYPE	SIZE	DESCRIPTION
PRIMARY KEY	OPP_NO	N	5	OPPRORTUNITY NUMBER (sector code+sequential #)
SECOND. KEY	CO_CODE	A	5	COMPANY CODE
	PRODUCT	A	10	PRODUCT CODE
	SECTOR	A	5	SECTOR CODE
	OPP_TYPE	A	5	OPPORTUNITY TYPE
	OPP_STATUS	A	5	OPPORTUNITY STATUS
	VAL_OPP	N	14.2	VALUE OF OPPORTUNITY
	ANN_SIZE	N	10	
	STAT_DATE	D	10	
	ANN_UNITS	N	10	# UNITS PRODUCED PER ANN
	LEAD_TIME	A	10	
	SEASONS	A	20	
	HS_CODE	A	5	
	MARKET	A	3	
	REQMTS	A	100	REQUIREMENTS
	COMMENT1	A	50	
	COMMENT2	A	50	
	COMMENT3	A	50	
	VAL_DT	D	10	VALIDITY DATE FOR OPP.
	SERIAL1	N	5	RECORD NUMBER

DATA FILE : OPPORTUNITY PROFILE HEADER - PROF_HDR

ATTRIBUTES	FIELD	TYPE	SIZE	DESCRIPTION
PRIMARY KEY	CO_CODE	A	5	COMPANY CODE
	INFO_SOURCE	A	30	INFORMATION SOURCE
	INFO_DATE	D	10	INFORMATION DATE

DATA FILE : PROJECT ASSESSMENT - PROJ_ASSM

ATTRIBUTES : FIELD TYPE SIZE DESCRIPTION

PRIMARY KEY	PROJECT_CODE	A	10	PROJECT CODE
	START_ASS	D	10	ASSESSMENT START DATE
	END_DATE	D	10	ASSESSMENT END DATE
	PROD_CAP	N	10	PRODUCTION CAPACITY
	QTY_OUTPUT	N	10	OUTPUT QUANTITY
	VAL_OUTPUT	N	14.2	OUTPUT VALUE
	PRIME_COST	N	14.2	PRIME COST
	MAT_CONS	N	10	COST OF RAW MATERIALS CONSUMED
	PACK_COST	N	14.2	PACKING COST
	LABOUR_COST	N	14.2	LABOUR COST
	MAN_OVHD	N	14.2	FACTORY & MAUFACTURING OVERHEAD
	CIF_VALUE	N	14.2	CIF VALUE OF EQUIPMENT
	COMM_DATE	D	10	DATE OF COMMISSIONING OF EQUIPMENT
	OUT_BET	N	10	OUTPUT BETWEEN COMMISSIONING OF EQUIPMENT & REVIEW DATE
	LOCAL_PURCH	N	14.2	COST OF MATERIALS PURCHASED LOCALLY
	IMP_PURCH	N	14.2	COST OF IMPORTED MATERIALS
	PERM_WORK	N	10	NUMBER OF PERMANENT WORKERS
	PERM_AVG	N	10	AVERAGE PERMANENT WORKERS
	TEMP_AVG	N	10	AVERAGE TEMPORARY WORKERS
	CAR_SALES	N	14.2	EXPORT SALES TO CARICOM
	CAR_UNITS	N	10	QUANTITY TO CARICOM
	CURR_SALES	N	14.2	HARD CURRENCY SALES
	CURR_UNITS	N	10	HARD CURRENCY UNITS
	LOCAL_SALES	N	14.2	LOCAL SALES
	LOCAL_UNITS	N	10	QUANTITY SOLD LOCALLY
	SALES_VAL	N	14.2	SALES VALUE

DATA FILE : PROJECT CODE - PROJ_CODE

ATTRIBUTES : FIELD TYPE SIZE DESCRIPTION

PRIMARY KEY	PROJECT_CODE	A	3	PROJECT CODE
	CO_CODE	A	5	COMPANY CODE
	PROJ_DESC	A	30	DESCRIPTION OF PROJECT
	PROJ_STAT	A	3	PROJECT STATUS
	PREV_STAT	A	3	PREVIOUS STATUS

DATA FILE : PROJECT FUNDING - PROJ_FUND
ATTRIBUTES : FIELD TYPE SIZE DESCRIPTION

PRIMARY KEY	JAMPRO_CODE	A	10	PROJECT CODE
SECOND. KEY	FUND_PRG	A	5	FUNDING PROGRAMME
	AMOUNT	N	14.2	AMOUNT FUNDED

DATA FILE : PROJECT PRODUCT - PROJ_PROD
ATTRIBUTES : FIELD TYPE SIZE DESCRIPTION

PRIMARY KEY	JAMPRO_CODE	A	10	PROJECT CODE
SECOND. KEY	PRODUCT	A	10	PRODUCT CODE
	TAR_MARKET	A	3	TARGET MARKET CODE
	PROJ_QTY	N	7	QUANTITY
	EXP_PER	N	3	EXPORT PERCENTAGE
	LOCAL_PRC	N	14.2	LOCAL PRICE
	FOR_PRC	N	7.2	FOREIGN PRICE
	DUTY	N	5.2	LANDED DUTY

DATA FILE : PROJECT PROFILE - PROJ_PROF

ATTRIBUTES : FIELD TYPE SIZE DESCRIPTION

PRIMARY KEY	JAMPRO_CODE	A	10	JAMPRO/PROJECT CODE
	CO_CODE	A	5	COMPANY CODE
	PROJECT_TYPE	A	5	(investment, non-investment etc.)
	PRODUCT	A	10	PRODUCT CODE
	MARKET	A	3	MARKET CODE
	SECTOR	A	5	SECTOR CODE
	DIV_CODE	A	3	JAMPRO DIVISION
	OFFICER	A	20	JAMPRO OFFICER
	PROJ_NATURE	A	5	(expansion, new project)
	PRG_CODE	A	5	FUNDING PROGRAMME
	START_PROJ	D	10	PROJECT START DATE
	END_DATE	D	10	PROJECT END DATE
	QTY_PROD	N	10	QUANTITY PRODUCED
	LOCAL_PRC	N	14.2	LOCAL PRICE
	FOREIGN_PRC	N	14.2	FOREIGN PRICE
	LANDED_DUTY	N	10.2	DUTY CHARGED
	DESCRIPTION	A	50	PROJECT DESCRIPTION
	JAMPRO_ROLE	A	10	ROLE OF JAMPRO
	TRAINING	A	50	TRAINING INFORMATION
	PERM_EMPL	N	10	TOTAL LOCAL PERMANENT EMPLOYEES
	TEMP_EMPL	N	10	TEMPORARY LOCAL EMPLOYEES
	LOC_PAYROLL	N	14.2	TOTAL LOCAL PAYROLL
	LOC_RAW_MAT	N	14.2	" RAW MATERIALS
	LOC_CAPINV	N	14.2	" CAPITAL INVESTMENT

DATA FILE : PROJECT PROFILE CONT'D

ATTRIBUTES	FIELD	TYPE	SIZE	DESCRIPTION
	LOC_OPCOST	N	14.2	" OPERATING COSTS
	LOC_SALES	N	14.2	" SALES
	LOC_EQUITY	N	14.2	EQUITY LOCAL CURRENCY
	LOC_LOAN	N	14.2	LOAN LOCAL CURRENCY
	PERM_EMPF	N	10	TOTAL FOREIGN PERMANENT EMPLOYEES
	PROJ_CONTACT	A	30	PROJECT CONTACT
	TEMP_EMPF	N	10	TEMPORARY FOREIGN EMPLOYEES
	FOR_PAYROLL	N	14.2	TOTAL FOREIGN PAYROLL
	FOR_RAW_MAT	N	14.2	" RAW MATERIALS
	FOR_CAPINV	N	14.2	" CAPITAL INVESTMENT
	FOR_OPCOST	N	14.2	" OPERATING COSTS
	FOR_SALES	N	14.2	" SALES
	PERM_EMPP	N	10	PROJECTED PERMANENT EMPLOYEES
	TEMP_EMPP	N	10	PROJECTED TEMPORARY EMPLOYEES
	PRO_PAYROLL	N	14.2	PROJECTED PAYROLL
	PRO_RAW_MAT	N	14.2	" RAW MATERIALS
	PRO_CAPINV	N	14.2	" CAPITAL INVESTMENT
	PRO_OPCOST	N	14.2	" OPERATING COSTS
	PRO_SALES	N	14.2	" SALES
	CUR_OFFSP	N	7	CURRENT OFFICE SPACE
	PRO_OFFSP	N	7	PROJECTED "
	CUR_LNDSP	N	7	CURRENT LAND SPACE
	PRO_LNDSP	N	7	PROJECTED "
	NET_PROFIT	N	14.2	NET PROFIT
	FOR_JV	N	3.2	FOREIGN % OF JOINT VENTURE
	LOC_JV	N	3.2	LOCAL % OF JOINT VENTURE
	CURR_STAT	A	3	CURRENT STATUS
	PREV_STAT	A		PREVIOUS STATUS
	STAT_DATE	D	10	STATUS DATE
	OWN_STRUC	A	2	OWNERSHIP STRUCTURE - JV,LC,FR
	RECOMM	A	60	RECOMENDATION/REMARK
	EXCH_RATE	N	7.4	EXCHANGE RATE
	LOCATION	A	3	LOCATION/ PARISH CODE

DATA FILE : PROJECT MILESTONES - PROJ_MILE

ATTRIBUTES : FIELD TYPE SIZE DESCRIPTION

PRIMARY KEY

PROJECT_CODE	A	10	PROJECT CODE
MILESTONE	A	20	PROJECT MILESTONE
SCH_DATE	D	10	SCHEDULED DATE
ACT_DATE	D	10	ACTUAL DATE
MILE_STAT	A	10	MILESTONE STATUS
MILE_DATE	D	10	MILESTONE STATUS DATE

DATA FILE : PROJECT NATURE - PROJ_NAT

ATTRIBUTES : FIELD TYPE SIZE DESCRIPTION

PRIMARY KEY

NATURE_CODE	A	3	NATURE OF PROJECT (new , expansion etc.)
NAT_DESC	A	30	DESCRIPTION OF NATURE
CODE_STAT	A	1	PROJECT NATURE CODE STATUS

DATA FILE : PROJECT COUNTRY OWNERS - PROJ_OWNS

ATTRIBUTES : FIELD TYPE SIZE DESCRIPTION

PROJ_CODE	A	5	PROJECT CODE
COUNT_CODE	A	3	COUNTRY CODE

DATA FILE : PROJECT_POLICY - PROJ_POL

ATTRIBUTES : FIELD TYPE SIZE DESCRIPTION

PROJ_CODE	A	5	PROJECT CODE
POL_NO	A	5	POLICY NO. FOR POLICIES AFFECTING OR IMPACTING IN ANY WAY ON A PROJECT

DATA FILE : PROJECT STATUS CODE - PROJ_STAT

ATTRIBUTES : FIELD TYPE SIZE DESCRIPTION

PRIMARY KEY

PROJ_STAT	A	3	PROJECT STATUS CODE
STAT_DESC	A	30	DESCRIPTION OF PROJECT STATUS
CODE_STAT	A	1	PROJECT STATUS CODE STATUS

DATA FILE : PROJECT TYPE - PROJ_TYPE

ATTRIBUTES : FIELD TYPE SIZE DESCRIPTION

PRIMARY KEY

PROJ_TYPE	A	5	TYPE OF PROJECT
DESC_TYPE	A	20	DESCRIPTION OF TYPE
CODE_STAT	A	1	PROJECT TYPE CODE STATUS

DATA FILE : PROMOTIONS

ATTRIBUTES : FIELD TYPE SIZE DESCRIPTION

ACTIVITY	A	40	TYPE OF PROMOTION
PROM_DATE	D	10	PROMOTION DATE
TIME	A	5	TIME OF ACTIVITY
HOST	A	30	COMPANY PRESENTING ACTIVITY
TOPIC	A	30	TOPIC OF ACTIVITY
PRESENTER	A	30	SPEAKER
MAX_PART	N	5	MAXIMUM NO. PARTICIPANT
VENUE	A	30	VENUE FOR ACTIVITY
FEES	N	12.2	PROMOTION ACTV. FEE
PART_REG	N	5	NUMBER OF PARTICIPANTS REGISTERED
MARKET	A	3	MARKET GEARED FOR
SECTOR	A	5	SECTOR GEARED FOR
PRODUCT	A	10	PRODUCT GEARED FOR VENUE

DATA FILE : COUNTRY QUOTA - QUOTA

ATTRIBUTES : FIELD TYPE SIZE DESCRIPTION

PRIMARY KEY 1 MARKET A 3 MARKET CODE
PRIMARY KEY 2 GROUP A 5 APPAREL GROUP OR GROUP
PRIMARY KEY 3 CATEGORY A 10 PRODUCT CATEGORY CODE
 SECTOR A 5 SECTOR CODE
 QUOTA_YEAR N 4 YEAR OF QUOTA
 QUOTA N 12 QUOTA THIS YEAR
 REV_QUOTA N 12 REVISED QUOTA THIS YEAR
 AMT_ALLO N 12 AMOUNT ALLOCATE
 REV_DATE D 10 DATE OF REVISION

DATA FILE : TRADE STATISTICS - TRADE_STAT

ATTRIBUTES : FIELD TYPE SIZE DESCRIPTION

PRIMARY KEY	PRODUCT	A	10	PRODUCT CODE
	ORIGIN	A	3	COUNTRY OF ORIGIN
	MARKET	A	3	DESTINATION
	TRD_YEAR		N 4	TRADE YEAR
	QTY	N	10	QUANTITY
	VALUE	N	14.2	VALUE OF PRODUCTS
	CATEGORY	A	2	TRADE CATEGOPRY (Import / Export / Re-export)
	REC_NUM	N	5	RECORD NUMBER

DATA FILE : TRANSPORT AGENT - TRANS_SERV

ATTRIBUTES : FIELD TYPE SIZE DESCRIPTION

PRIMARY KEY	SERV_NO	A	10	SERVICE NUMBER
	SERV_CODE	A	5	SERVICE CODE
	TRANSP_MODE	A	5	TRANSPORT MODE
	PRODUCT	A	10	PRODUCT CODE
	ORIGIN	A	3	COUNTRY OF ORIGIN
	DESTIN	A	3	DESTINATION
	CODE_STAT	A	1	CODE STATUS

DATA FILE : TRANSPORT AGENT - TRANS_JOB

ATTRIBUTES : FIELD TYPE SIZE DESCRIPTION

PRIMARY KEY	SERV_CODE	A	5	SERVICE CODE
	SERV_DESC	A	30	SERVICE DESCRIPTION
	CODE_STAT	A	1	SERVICE CODE STATUS

DATA FILE : TRANSPORT AGENT - TRANS_MODE

ATTRIBUTES : FIELD TYPE SIZE DESCRIPTION

PRIMARY KEY	MODE_CODE	A	5	TRANSPORT MODE CODE
	MODE_DESC	A	30	CODE DESCRIPTION
	CODE_STAT	A	1	TRANSP. MODE CODE STATUS

DATA FILE : USERS FILE - USERS

ATTRIBUTES : FIELD TYPE SIZE DESCRIPTION

PRIMARY KEY	USER_CODE	A	5	
	USER_LNAME	A	30	USER'S SURNAME
	USER_FNAME	A	30	CHRISTIAN NAME
	INITIAL	A	2	MIDDLE INITIAL
	PREV_PASS	A	10	PREVIOUS PASSWORD
	PRES_PASS	A	10	PRESENT PASSWORD
	DIV_CODE	A	3	DEPARTMENT CODE
	SUPER_USER	A	1	SUPER USER (Y/N)
	DISPLAYY	A	1	DISPLAY RIGHTS (Y/N)
	ADD	A	1	ADD RIGHTS (Y/N)
	SAVEE	A	1	SAVE RIGHTS (Y/N)
	DELETEE	A	1	DELETE RIGHTS (Y/N)
	PRINTT	A	1	PRINT RIGHTS (Y/N)
	VIEW	A	1	VIEW RIGHTS (Y/N)

DATA FILE : VEHICLE INSURANCE - VEHIC_INS

ATTRIBUTES : FIELD TYPE SIZE DESCRIPTION

PRIMARY KEY1	VEH_NO	A	10	VEHICLE NUMBER
PRIMARY KEY2	INS_POL	A	10	INSURANCE POLICY NUMBER
	INS_CO	A	20	INSURANCE COMPANY
	POL_NAME	A	20	INSURANCE POLICY DESCRIPTION
	POL_EXP	D	10	POLICY EXPIRY DATE

DATA FILE : VALID IDENTIFICATION - VALID_ID

ATTRIBUTES : FIELD TYPE SIZE DESCRIPTION

PRIMARY KEY	ID_CODE	A		IDENTIFICATION CODE
	ID_DESC	A		IDENTIFICATION DESCRIPTION

DATA FILE : VEHICLE DETAILS - VEHICLE**ATTRIBUTES : FIELD TYPE SIZE DESCRIPTION**

PRIMARY KEY	VEH_NO	A	10	VEHICLE NUMBER
	CO_CODE	A	5	COMPANY CODE
	MVC_NO	A	10	MOTOR VEHICLE CERTIFICATION NUMBER
	MVC_DATE	D	10	CERTIFICATION DATE
	REG_PLATE	A	10	REGISTRATION PLATE
	REG_DATE	D	10	REGISTRATION DATE
	SP_PERM#	A	10	SPECIAL PERMIT NUMBER
	CHAS_NO	A	10	CHASSIS NUMBER
	ENG_NO	A	10	ENGINE NUMBER
	MAKE	A	20	MAKE OF VEHICLE

DATA FILE : VISA REGISTRATION - VISA**ATTRIBUTES : FIELD TYPE SIZE DESCRIPTION**

PRIMARY KEY	CO_CODE	A	5	COMPANY CODE
SECOND. KEY	VISA_NO	A	10	VISA NUMBER
	EXPORT_NO	A	10	EXPORTER NUMBER
	VISA_STAT	A	10	STATUS OF VISA
	VISA_TYP	A	3	TYPE OF VISA (USA)
	VIS_STATDT	D	10	VISA STATUS DATE
	REFER_NO	A	10	REFERENCE NUMBER
	REF_DATE	D	10	REFERENCE DATE

DATA FILE : VISA TYPE CODE - VISA_TYPE**ATTRIBUTES : FIELD TYPE SIZE DESCRIPTION**

PRIMARY KEY	VISA_TYPE	A	3	TYPE OF VISA (eg. USA)
	VISA_DESC	A	30	VISA DESCRIPTION

PREDEFINED SYSTEM CODES :-**ACT_CODE table (activity code)**

CCP - COMPLETED CALLS
CAT - CALLS ATTEMPTED
MEH - MEETING HELD
LET - LETTER SENT
ID - ITINERARY DETAIL

PROJ_STAT table (project status table)

PRP - IN PREPARATION
APP - APPROVED
IMP - IN IMPLEMENTATION
PIP - IN PIPELINE
OPP - IN OPERATION

CERT_TYPE table (type of certificate)

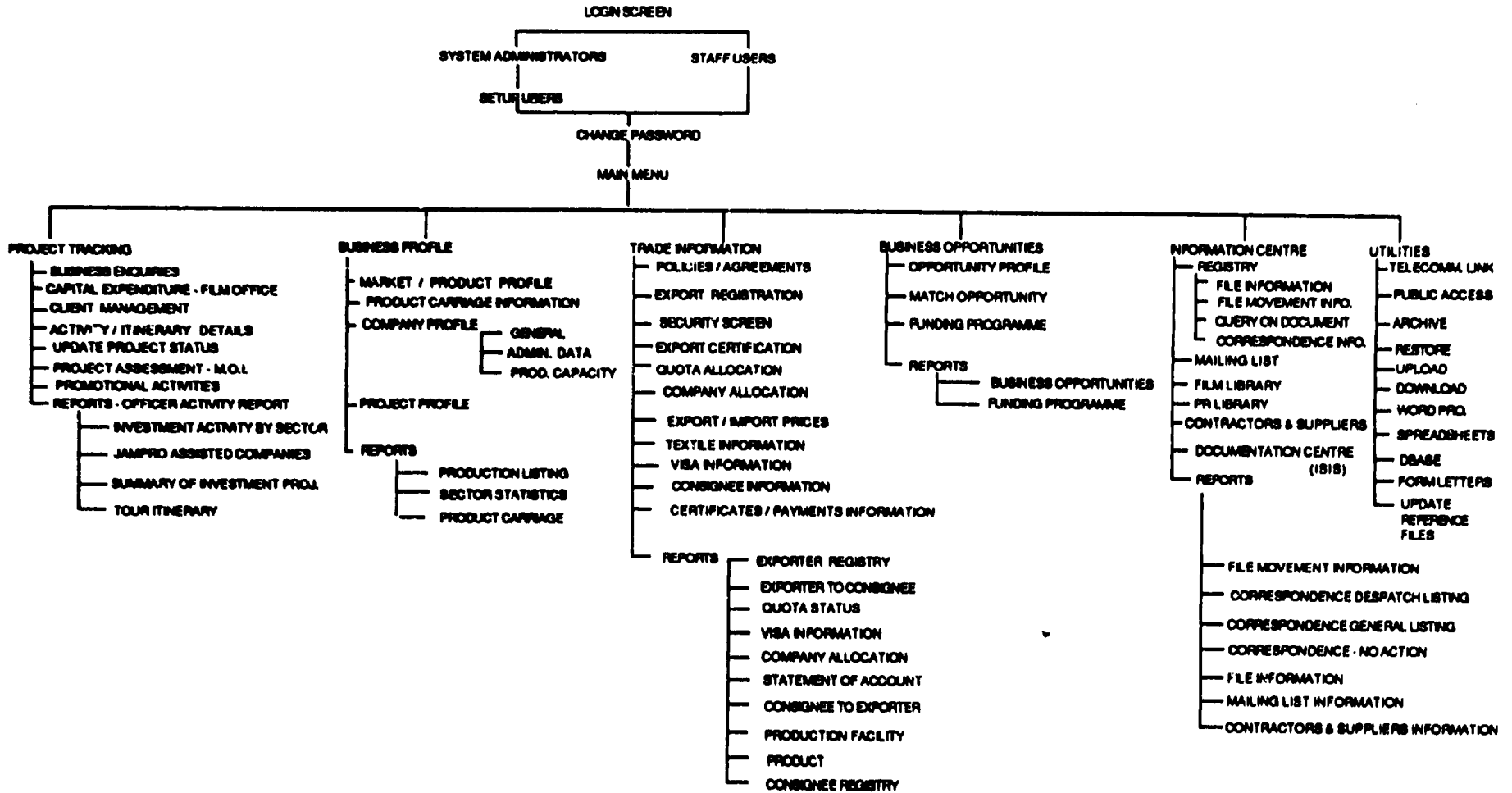
e.g. CARIBCAN
CARIBCOM
C.B.I.
G.S.P.
INTRA - JAMAICAN
NON-US TEXTILES

EMP_CAT table (employment category)

e.g. GM - GENERAL MANAGER
EM - EXPORT MANAGER

SCREEN & REPORT LAYOUTS

JAMAICA PROMOTIONS CORPORATION
CENTRALIZED DATABASE FACILITY
STRUCTURE CHART



PROJECT TRACKING



PROJECT TRACKING

- BUSINESS ENQUIRIES
- CAPITAL EXPENDITURE - FILM OFFICE
- CLIENT MANAGEMENT
- ACTIVITY/ITNERARY DETAILS
- UPDATE PROJECT STATUS
- PROJECT ASSESSMENT - M.O.I.
- PROMOTIONAL ACTIVITIES
- **REPORTS - OFFICE ACTIVITY REPORT**
 - OFFICE ACTIVITY REPORT
 - INVESTMENT ACTIVITY BY SECTOR
 - JAMPRO ASSISTED COMPANIES
 - SUMMARY OF INVESTMENT PROJECT
 - TOUR ITINERARY

JAMAICA PROMOTIONS CORPORATION
BUSINESS ENQUIRIES

DD/MM/YYYY

JAMPRO CODE : RESPONSIBLE OFFICER :

STATUS : COMPANY CODE :

LAST/COMPANY NAME : FIRST NAME : MIDDLE INITIAL :

JOB TITLE : GENDER : AGE :

ADDRESS :

 COUNTRY :
DIVISION :

TELEPHONE NO. : FAX NO. :

HOW REFERRED : MODE OF CONTACT :

PROJECT NATURE : SECTOR :
SUB-SECTOR :

PRODUCT/SERVICE : * TYPE OF ENQUIRY :

TYPE OF ASSIST. : TYPE OF BUSINESS : *

REMARKS :

 DATE OF ENQUIRY : DD/MM/YYYY
NEXT APPOINTMENT : DD/MM/YYYY

FOLLOW UP REQUIRED :
 BRING UP DATE : DD/MM/YYYY

PROJECT NAME / DESCRIPTION :

HELP - (F1), ADD - (F2), SAVE - (F3), DELETE - (F4), REFERENCE TABLE - (F7), QUIT - (F9)
PGDN - NEXT SCREEN

* MULTIPLE ENTRIES ARE ALLOWED FOR THE FIELD

JAMAICA PROMOTIONS CORPORATION
BUSINESS ENQUIRIES - FILM

DD/MM/YYYY

ADVERTISING AGENCY : SCRIPT AVAILABLE :

SCOUT DATE : DD/MM/YYYY SHOOT DATE : DD/MM/YYYY

BUDGET \$: METHOD OF FINANCING :

EXECUTIVE PRODUCER : DIRECTOR :

PRODUCER : WRITER :

LOCATION MANAGER : PROD. DESIGNER :

PRODUCTION MANAGER : OTHER :

KEY CAST :

INFORMATION SENT :

HELP - (F1), ADD - (F2), SAVE - (F3), PGUP - PREVIOUS SCREEN, QUIT - (F9)

JAMAICA PROMOTIONS CORPORATION
CAPITAL EXPENDITURE - FILM OFFICE

DD/MM/YYYY

JAMPRO CODE :

COMPANY NAME :

LOCAL EXPENDITURE BREAKDOWN (US\$):

HOTEL :

VILLA :

PRIVATE RENTAL :

ALL-INCLUSIVE :

SECURITY :

PER DIEM :

PRE-PRODUCTION :

WARDROBE :

VEHICLE EXPENSES :

EQUIPMENT RENTAL :

LOCAL EXTRAS :

POST PRODUCTION :

SPECIAL EFFECTS :

CONSTRUCTION :

LOCATION FEES :

CATERING :

PROPS & SET DRESSING :

TOTAL COST OF PROJECTION :

CASTING, TALENT & AGENCY FEES :

LOCATION PRODUCTION & TECHNICAL CREW :

MISCELLANEOUS EXPENSES :

TOTAL EXPENDITURE (US\$) :

WAS SALARY DETAILS OF JAMAICAN PERSONNEL PROVIDED :

TOTAL DAYS OF SHOOT :

JAMAICA PROMOTIONS CORPORATION
CLIENT MANAGEMENT

DD/MM/YYYY

JAMPRO CODE : XX-XX-XXXX XX

DIVISION : XXX XXXXXXXXXXXXXXXXXXXXXXXXXXXXXXXX

COMPANY NAME : XX CURRENT STATUS : XXXXXXXXXXXXX

CONTACT PERSON : XXXXXXXXXXXXXXXXXXXXXXXXXXXXXXXX JOB TITLE : XXXXXX.XXX

DATE	ACTION TAKEN	Y/N	JAMPRO OFFICER	COMMENTS/ FOLLOW-UP REQUIRED	FOLLOW UP BY INVESTOR	STATUS
DD/MM/YYYY	XXX XXXXXXXXXXXXX	XX	XXXXXXXXXXXXXXXXXXXXX	XXXXXXXXXXXXXXXXXXXXX	XXXXXXXXXXXXX	XXXXXXXXXXXXX
	XXX XXXXXXXXXXXXX			XXXXXXXXXXXXXXXXXXXXX	XXXXXXXXXXXXX	
DD/MM/YYYY	XXX XXXXXXXXXXXXX	XX	XXXXXXXXXXXXXXXXXXXXX	XXXXXXXXXXXXXXXXXXXXX	XXXXXXXXXXXXX	XXXXXXXXXXXXX
	XXX XXXXXXXXXXXXX			XXXXXXXXXXXXXXXXXXXXX	XXXXXXXXXXXXX	
DD/MM/YYYY	XXX XXXXXXXXXXXXX	XX	XXXXXXXXXXXXXXXXXXXXX	XXXXXXXXXXXXXXXXXXXXX	XXXXXXXXXXXXX	XXXXXXXXXXXXX
	XXX XXXXXXXXXXXXX			XXXXXXXXXXXXXXXXXXXXX	XXXXXXXXXXXXX	

HELP - (F1), ADD - (F2), SAVE - (F3), DELETE - (F4), REFERENCE TABLE - (F7), QUIT - (F9)
PREVIOUS RECORD - (PGUP), NEXT RECORD - (PGDN)

JAMAICA PROMOTIONS CORPORATION

DD/MM/YYYY

ITINERARY DETAILS

JAMPRO CODE : XX-XX-XXXX

COMPANY NAME : XXXXXXXXXXXXXXXXXXXXXXXXXXXXXXXX

JAMPRO OFFICER : XXXXXXXXXXXXXXXXXXXXXXXX

VISITOR : XX

DIVISION : XXXXXXXXXXXXXXXXXXXXXXXXXXXXXXXX

DATE	TIME	ACTIVITY	OUTCOME OF ACTIVITY	FOLLOW-UP REQUIRED FOR		JAMPRO OFFICER
				JAMPRO	VISITOR	
DD/MM/YYYY	HH:MM:SS	XXXXXXXXXX	XXXXXXXXXX	XXXXXXXXXX	XXXXXXXXXX	XXXX

HELP - (F1), ADD - (F2), SAVE - (F3), DELETE - (F4), REFERENCE TABLE - (F7), QUIT - (F9)

DD/MM/YYYY

THE JAMAICA PROMOTION'S CORPORATION

UPDATE PROJECT STATUS

JAMPRO CODE :

COMPANY NAME :

PRESENT STATUS :

NEW STATUS :

NEW STATUS DATE : DD/MM/YYYY

RESPONSIBLE OFFICER :

HELP - (F1), SAVE - (F3), REFERENCE TABLE - (F7), QUIT - (F9)

JAMAICA PROMOTIONS CORPORATION
PROJECT ASSESSMENT - M.O.I.

DD/MM/YYYY

JAMPRO CODE : XX-XX-XXXX COMPANY NAME : XXXXXXXXXXXXXXXXXXXXXXXXXXXX

ASSESSMENT PERIOD: DD/MM/YYYY - DD/MM/YYYY

PRODUCTION DATA

CAPACITY : NNN.NNN.NNN.NN RAW MATERIALS CONSUMED : NNN.NNN.NNN.NN
OUTPUT : NNN.NNN.NNN.NN PACKAGING COSTS : NNN.NNN.NNN.NN
PRIME COST : NNN.NNN.NNN.NN SALES VALUE OF OUTPUT : NNN.NNN.NN^NN

DIRECT MANUFACTURING LABOUR COST : NNN.NNN.NNN.NN

FACTORY OR MANUFACTURING OVERHEAD ONLY : NNN.NNN.NNN.NN

CIF VALUE OF EQUIPMENT FOR CURRENT YEAR (US\$) : NNN.NNN.NNN.NN

DATE OF COMMISSIONING OF EQUIPMENT : DD/MM/YYYY

OUTPUT BETWEEN COMMISSIONING OF EQUIPMENT AND REVIEW PERIOD : NNN.NNN.NNN.NN

RAW MATERIALS PURCHASED :

LOCAL VALUE : NNN.NNN.NNN.NN

IMPORTED VALUE : NNN.NNN.NNN.NN

TOTAL : NNN.NNN.NNN.NN

PRODUCTION EMPLOYMENT DATA :

PERMANENT WORKERS : NNN.NNN.NNN.NN

AVERAGE PERMANENT WORKERS : NNN.NNN.NNN.NN

AVERAGE TEMPORARY WORKERS : NNN.NNN.NNN.NN

SALES PERFORMANCE :

	UNITS	SALES VALUE (\$)
EXPORT SALES TO CARICOM :	<u>NNN.NNN.NNN.NN</u>	<u>NNN.NNN.NNN.NN</u>
HARD CURRENCY MARKET :	<u>NNN.NNN.NNN.NN</u>	<u>NNN.NNN.NNN.NN</u>
TOTAL EXPORT :	<u>NNN.NNN.NNN.NN</u>	<u>NNN.NNN.NNN.NN</u>
LOCAL SALES :	<u>NNN.NNN.NNN.NN</u>	<u>NN.NNN.NNN.NNN</u>
TOTAL SALES :	<u>NNN.NNN.NNN.NN</u>	<u>NNN.NNN.NNN.NN</u>

HELP - (F1), ADD - (F2), SAVE - (F3), DELETE - (F4), REFERENCE TABLE - (F7), QUIT - (F9)

JAMAICA PROMOTIONS CORPORATION
OFFICER ACTIVITY REPORT

DD/MM/YYYY

OFFICER : XXXXXXXXXX

PERIOD : DD/MM/YYYY TO DD/MM/YYYY

DD/MM/YYYY

OFFICER ACTIVITY REPORT

PAGE : NNN

RESPONSIBLE
OFFICER

COMPANY NAME

ATTEMPTED
CALLS

COMPLETED
CALLS

MEETINGS
HELD

LETTERS
SENT

XXXXXXXXXX

XXXXXXXXXXXXXXXXXXXXXXXXXX

NN

NN

NN

NN

HELP - (F1), ON SCREEN - (F5), PRINT - (F6), REFERENCE TABLE - (F7), QUIT - (F9)

DDMMYYYY

JAMAICA PROMOTIONS CORPORATION
SUMMARY OF INVESTMENT PROJECTS

PRINT REPORT AS AT DDMMYYYY

SECTION		PROJECTS IN PREPARATION		PROJECTS APPROVED		PROJECTS BEING IMPLEMENTED						PROJECTS IN PROGRESS		PROJECTS IN OPERATION	
		NO		NO		NO		NO		NO		NO		NO	
		POTENTIAL		POTENTIAL		POTENTIAL		POTENTIAL		POTENTIAL		POTENTIAL		POTENTIAL	
		CAP INV		CAP INV		CAP INV		CAP INV		CAP INV		CAP INV		CAP INV	
		J\$		J\$		J\$		J\$		J\$		J\$		J\$	
JAMAICA PROMOTIONS CORPORATION															
SUMMARY OF INVESTMENT PROJECTS AS AT DDMMYYYY															
ENTERTAINED COGNITION															
		1.2 MTHS		4.0 MTHS		6.0 MTHS		CURRENTLY							
		NO		NO		NO		NO		NO		NO		NO	
		POTENTIAL		POTENTIAL		POTENTIAL		POTENTIAL		POTENTIAL		POTENTIAL		POTENTIAL	
		CAP INV		CAP INV		CAP INV		CAP INV		CAP INV		CAP INV		CAP INV	
		J\$		J\$		J\$		J\$		J\$		J\$		J\$	
TOTAL		90,000,000		90,000,000		90,000,000		90,000,000		90,000,000		90,000,000		90,000,000	

JAMAICA PROMOTIONS CORPORATION
 TOUR ITINERARY

DD/MM/YYYY

JAMPRO CODE : XX-XX-XXXX

CLIENT / VISITOR : XXXXXXXXXXXXXXXXXXXXXXXXXXXXXXXX

COMPANY NAME : XXXXXXXXXXXXXXXXXXXXXXXXXXXXXXXX

AS AT : DD/MM/YYYY

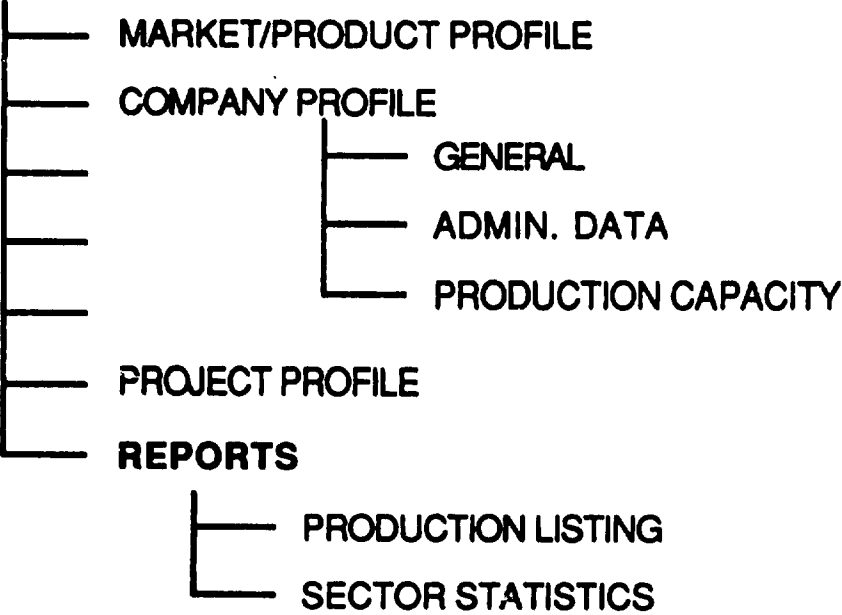
DD/MM/YYYY		TOUR ITINERARY		PAGE : NNN
DATE	TIME	ACTIVITY	JAMPRO OFFICER	RESULT
DD/MM/YYYY	HH:MM:SS	XXXXXXXXXXXXXXXXXX	XXXXXXXXXXXXXXXXXX	XXXXXXXXXX

HELP - (F1), ON SCREEN - (F5), PRINT - (F6), REFERENCE TABLE - (F7), QUIT - (F9)

BUSINESS PROFILES



BUSINESS PROFILE



JAMAICA PROMOTIONS CORPORATION
MARKET / PRODUCT PROFILE

DD.MM/YYYY
SCREEN 1 OF 2

MARKET :

PRODUCT (H.S. CODE) :

SECTOR :

SUB - SECTOR :

LOCAL UPPER PRICE :

FOREIGN UPPER PRICE :

LOCAL LOWER PRICE :

FOREIGN LOWER PRICE :

ANNUAL DEMAND GROWTH RATE :

GROWTH POTENTIAL :

ANNUAL PRODUCTION :- SIZE :

PREFERENCE :

UNITS :

ENTRY REGULATIONS :

ENTRY REQUIREMENTS :

CHARACTERISTICS :

FOREIGN COMPETITION :

(Cartelized, Small Operators, etc.)

LOCAL COMPETITION :

PROCEDURAL STEPS :

INCENTIVES TO EXPLORE MARKET :

DATE RECORDED :

MARKET STATUS :

HELP - (F1), ADD - (F2), SAVE - (F3), DELETE - (F4), REFERENCE - (F7), QUIT - (F9)

PGUP - PREVIOUS SCREEN PGDN - NEXT SCREEN

JAMAICA PROMOTIONS CORPORATION
MARKET /PRODUCT PROFILE

DD/MM/YYYY
SCREEN 2 OF 2

MARKET :

PRODUCT (H.S. CODE) :

SECTOR :

SUB - SECTOR

ABSTRACT :

```
XXXXXXXXXXXXXXXXXXXXXXXXXXXXXXXXXXXXXXXXXXXXXXXXXXXXXXXXXXXXXXXXXXXX
XXXXXXXXXXXXXXXXXXXXXXXXXXXXXXXXXXXXXXXXXXXXXXXXXXXXXXXXXXXXXXXXXXXX
XXXXXXXXXXXXXXXXXXXXXXXXXXXXXXXXXXXXXXXXXXXXXXXXXXXXXXXXXXXXXXXXXXXX
XXXXXXXXXXXXXXXXXXXXXXXXXXXXXXXXXXXXXXXXXXXXXXXXXXXXXXXXXXXXXXXXXXXX
XXXXXXXXXXXXXXXXXXXXXXXXXXXXXXXXXXXXXXXXXXXXXXXXXXXXXXXXXXXXXXXXXXXX
XXXXXXXXXXXXXXXXXXXXXXXXXXXXXXXXXXXXXXXXXXXXXXXXXXXXXXXXXXXXXXXXXXXX
XXXXXXXXXXXXXXXXXXXXXXXXXXXXXXXXXXXXXXXXXXXXXXXXXXXXXXXXXXXXXXXXXXXX
```

HELP - (F1), ADD - (F2), SAVE - (F3), DELETE - (F4), REFERENCE TABLE - (F7), QUIT - (F9)

PGUP - PREVIOUS SCREEN PGDN - NEXT SCREEN

JAMAICA PROMOTIONS CORPORATION
COMPANY - PROFILE

DD/MM/YYYY
SCREEN 2 OF 5

COMPANY CODE :

SUMMARIZE - GOALS :

CONSTRAINTS :

EXPORT EXPERIENCE :

EXPORT START UP DATE :

PRODUCT SAMPLES RECEIVED :

JOINT VENTURE CONTRIBUTION SOUGHT :

DESCRIPTION

OFFERED :

TYPE OF ASSISTANCE SOUGHT :

FREEZONE INTERESTS :

HELP - (F1), ADD - (F2), SAVE - (F3), DELETE - (F4), REFERENCE TABLE - (F7), QUIT - (F9)
PGUP - PREVIOUS SCREEN PGDN - NEXT SCREEN

JAMAICA PROMOTIONS CORPORATION
 COMPANY PROFILE - ADMINISTRATIVE DATA

DD/MM/YYYY
 SCREEN 3 OF 5

COMPANY CODE : COMPANY STATUS :

COMPANY NAME :

FINANCE :

CAPITAL INVESTMENT : (J\$) (US\$) TOTAL (J\$)

EQUITY : LOAN :

Exchange rate US\$ 1.00 = PROJ. TOTAL CAPITAL : (J\$)

SALES :

ANNUAL SALES : (J\$) (US\$) .

EXPORTS : (J\$) (US\$) .

STAFFING :

CATEGORY	PRESENT						PROJECTED					
	PERMANENT			TEMPORARY			PERMANENT			TEMPORARY		
	MAL	FEM	TOTAL	MAL	FEM	TOTAL	MALE	FEM	TOTAL	MALE	FEM	TOTAL
<input type="text" value="XXXX"/>	<input type="text" value="NN"/>	<input type="text" value="NN"/>	<input type="text" value="NN"/>	<input type="text" value="NN"/>	<input type="text" value="NN"/>	<input type="text" value="NN"/>	<input type="text" value="NN"/>	<input type="text" value="NN"/>	<input type="text" value="NN"/>	<input type="text" value="NN"/>	<input type="text" value="NN"/>	<input type="text" value="NN"/>
<input type="text" value="XXXX"/>	<input type="text" value="NN"/>	<input type="text" value="NN"/>	<input type="text" value="NN"/>	<input type="text" value="NN"/>	<input type="text" value="NN"/>	<input type="text" value="NN"/>	<input type="text" value="NN"/>	<input type="text" value="NN"/>	<input type="text" value="NN"/>	<input type="text" value="NN"/>	<input type="text" value="NN"/>	<input type="text" value="NN"/>
TOTAL :	<input type="text" value="NN"/>	<input type="text" value="NN"/>	<input type="text" value="NN"/>	<input type="text" value="NN"/>	<input type="text" value="NN"/>	<input type="text" value="NN"/>	<input type="text" value="NN"/>	<input type="text" value="NN"/>	<input type="text" value="NN"/>	<input type="text" value="NN"/>	<input type="text" value="NN"/>	<input type="text" value="NN"/>

HELP - (F1), ADD - (F2), SAVE - (F3), DELETE - (F4), REFERENCE TABLE - (F7), QUIT - (F9)
 PGUP - PREVIOUS SCREEN, PGDN - NEXT SCREEN

* - POPUP AVAILABLE TO ALLOW THE ENTRY OF SALES FOR A PARTICULAR YEAR

JAMAICA PROMOTIONS CORPORATION
 COMPANY PROFILE - ADMINISTRATIVE DATA

DD/MM/YYYY
 SCREEN 4 OF 5

COMPANY : XX-XX-XXXX

COMPANY NAME : XXXXXXXXXXXXXXXXXXXXXXXXXXXXXXXXXXXXXXX

MARKET INFORMATION :

PRODUCT/ SERVICE	DESTINATION MARKET	% of PRODUCTION for EXPORT	M A I N		
			DISTRIBUTOR	COMPETITOR	CUSTOMER
XXXX XXXXXXXXXXXX	XXXXXXXXXX	XX	XXXXXXXXXX	XXXXXXXXXX	XXXXXXXXXX

PAYROLL INFORMATION :

YEAR	TOTAL
1977/1978	*****

HELP - (F1), ADD - (F2), SAVE - (F3), DELETE - (F4), REFERENCE TABLE - (F7), QUIT - (F9)
 PGUP - PREVIOUS SCREEN, PGDN - NEXT SCREEN

* - POPUP AVAILABLE TO ALLOW THE ENTRY OF SALES FOR A PARTICULAR YEAR

JAMAICA PROMOTIONS CORPORATION
PROJECT PROFILE

DD/MM/YYYY
SCREEN 1 OF 2

JAMPRO CODE : COMPANY NAME :
 PROJECT NAME : JAMPRO'S ROLE :
 SECTOR : DIVISION :
 CONTACT PERSON : NATURE OF PROJECT :
 LOCATION : OWNERSHIP STRUCTURE :
 RELEVANT POLICIES : % FOREIGN :
 FUNDING PROGRAMME : AMOUNT : % LOCAL :
 SPECIAL CLASS : COUNTRY OF OWNER(S) :

PROJECT DESCRIPTION :

TRAINING :

STAFFING AND FINANCIAL BASE

	EMPLOYMENT		PAYROLL	RAW MATERIALS	CAPITAL INVESTMENT	OPERATING COSTS	SALES	EQUITY	LOAN
	PERM	TEMP							
LOCAL	<input type="text"/>	<input type="text"/>	<input type="text"/>	<input type="text"/>	<input type="text"/>	<input type="text"/>	<input type="text"/>	<input type="text"/>	<input type="text"/>
FOREIGN	<input type="text"/>	<input type="text"/>	<input type="text"/>	<input type="text"/>	<input type="text"/>	<input type="text"/>	<input type="text"/>	<input type="text"/>	<input type="text"/>
PROJECTED	<input type="text"/>	<input type="text"/>	<input type="text"/>	<input type="text"/>	<input type="text"/>	<input type="text"/>	<input type="text"/>	<input type="text"/>	<input type="text"/>
TOTAL	<input type="text"/>	<input type="text"/>	<input type="text"/>	<input type="text"/>	<input type="text"/>	<input type="text"/>	<input type="text"/>	<input type="text"/>	<input type="text"/>

HELP - (F1), ADD - (F2), SAVE - (F3), DELETE - (F4), REFERENCE TABLE - (F7), QUIT - (F9)

* - ALLOWS FOR MULTIPLE ENTRIES

JAMAICA PROMOTIONS CORPORATION
 PRODUCT/ SERVICE LISTING

DD/MM/YYYY

PRODUCT : XXXXXXXXXX

DD/MM/YYYY

JAMAICA PROMOTIONS CORPORATION

PAGE : NN

PRODUCT / SERVICE LISTING

PRODUCT	COMPANY NAME	CONTACT PERSON	PRODUCTION CAPACITY	ANNUAL PRODUCTION	RAW MATERIALS USED
XXXXXXXXXX	XXXXXXXXXXXXXXXXXXXX	XXXXXXXXXXXXXXXXXXXX	NN,NNN,NNN	NN,NNN,NNN	XXXXXXXXXXXXXXXXXXXX

HELP - (F1), ON SCREEN - (F5), PRINT - (F6), REFERENCE TABLE - (F7), QUIT - (F9)

DD/MM/YYYY

JAMAICA PROMOTIONS CORPORATION
SECTOR STATISTICS REPORT

SECTOR : XXX XXXXXXXXXXXX (leave blank for all)
SUB-SECTOR : XXX XXXXXXXXXXXX
LOCATION : XXX XXXXXXXXXXXXXXXXXXXX

DD/MM/YYYY	JAMAICA PROMOTIONS CORPORATION STATISTICS REPORT BY LOCATION										PAGE :	
LOCATION	NO. OF FACTORY/ OFFICE	SIZE (SQ. FT.) UNDER 1000	BETWEEN 1000 - 5000	OVER 5000	ACTIVE	LOCAL	OWNERSHIP FOREIGN	JOINT VENT.	UNDER 1000	BETWEEN 1000 - 5000	OVER 5000	NNNN
XXXXXXXXXX	NNNN	NNNN	NNNN	NNNN	NNNN	NNNN	NNNN	NNNN	NNNN	NNNN	NNNN	NNNN

HELP - (F1), ON SCREEN - (F8), PRINT - (F6), REFERENCE TABLE - (F7), QUIT - (F9)

BUSINESS OPPORTUNITIES



BUSINESS OPPORTUNITIES

- OPPORTUNITY PROFILE
- MATCH OPPORTUNITY
- FUNDING PROGRAMME
- **REPORTS**

- BUSINESS OPPORTUNITIES
- FUNDING PROGRAMME

JAMAICA PROMOTIONS CORPORATION
OPPORTUNITY PROFILE

DD/MM/YYYY

COMPANY CODE : XXXXX COMPANY NAME : XXXXXXXXXXXXXXXXX
 EMPLOYMENT CAPACITY : XXXXXXX
 CAPITAL INVESTMENT : NNN,NNN,NN
 OPERATIONAL CONSTRAINTS : XXXXXXXXXXXXX
 NO. OF YEARS IN BUSINESS : XXXXXXXXXXXXX
 SOURCE OF INFORMATION : XXXXXXXXXXXXX
 NATIONAL LANGUAGE : XXXXXXXXXXXXX DATE : DD/MM/YYYY

OPP. TYPE	OPP. NO.	HS CODE	PRODUCT/SERVICE	SECTOR	MARKET	ANNUAL PROD.		LEAD TIME	SEASONS	OPP. VALUE	VALIDITY DATE
						SIZE	UNIT				
XXXX	NNN	NNN	XXXXXX	XXXXXX	XXXXXX	NNN	NNN	XXXX	XXXXXX	\$.\$\$\$.\$\$	DD/MM/YYYY

REQUIREMENTS	COMMENTS	OPP. STATUS	STATUS DATE
XXXXXXXXXXXXXXXXXXXXXXXXXXXX XXXXXXXXXXXXXXXXXXXXXXXXXXXX	XXXXXXXXXXXXXXXXXXXXXXXXXXXX XXXXXXXXXXXXXXXXXXXXXXXXXXXX	XXXX	DD/MM/YYYY

DO YOU WISH TO MATCH OPPORTUNITY NOW?

JAMAICA PROMOTIONS CORPORATION
MATCH BUSINESS OPPORTUNITY

DD/MM/YYYY

COMPANY CODE : COMPANY NAME :

OPPORTUNITY CODE :

AUTOMATIC MATCHING :

(MATCHER)

OPP. TYPE	OPP. NO.	HS CODE	PRODUCT/SERVICE	SECTOR	MARKET	ANNUAL PROD.		LEAD TIME	SEASONS	OPP. STATUS	VALIDITY DATE
						SIZE	UNIT				
<input type="text" value="XXXX"/>	<input type="text" value="NNNN"/>	<input type="text" value="NNN"/>	<input type="text" value="XXXXXX"/>	<input type="text" value="XXXXXX"/>	<input type="text" value="XXXXXX"/>	<input type="text" value="NNNN"/>	<input type="text" value="NNNN"/>	<input type="text" value="XXXX"/>	<input type="text" value="XXXXXX"/>	<input type="text" value="XXXX"/>	<input type="text" value="DD/MM/YYYY"/>

IF MATCHING IS MANUAL :-

COMPANY BEING MATCHED WITH :

OFFER BEING MATCHED :

(MATCHEE)

OPP. TYPE	OPP. NO.	HS CODE	PRODUCT/SERVICE	SECTOR	MARKET	ANNUAL PROD.		LEAD TIME	SEASONS	OPP. STATUS	VALIDITY DATE
						SIZE	UNIT				
<input type="text" value="XXXX"/>	<input type="text" value="NNNN"/>	<input type="text" value="NNN"/>	<input type="text" value="XXXXXX"/>	<input type="text" value="XXXXXX"/>	<input type="text" value="XXXXXX"/>	<input type="text" value="NNNN"/>	<input type="text" value="NNNN"/>	<input type="text" value="XXXX"/>	<input type="text" value="XXXXXX"/>	<input type="text" value="XXXX"/>	<input type="text" value="DD/MM/YYYY"/>

COMPANY CODE	OPP. VALUE	REQUIREMENTS	COMMENTS	STATUS DATE
<input type="text" value="XXXXXX"/>	<input type="text" value="\$,###.###.##"/>	<input type="text" value="XXXXXXXXXXXXXXXXXXXX"/>	<input type="text" value="XXXXXXXXXXXXXXXXXXXX"/>	<input type="text" value="DD/MM/YYYY"/>

HELP - (F1), ADD - (F2), SAVE - (F3), DELETE - (F4), REFERENCE TABLE - (F7), QUIT - (F9)

* CONTINUATION OF BOX ABOVE FOR BOTH SECTIONS ON THIS SCREEN

JAMAICA PROMOTIONS CORPORATION
MAINTAIN FUNDING PROGRAMME DATA

DD/MM/YYYY

FUNDING AGENCY CODE : XXXXXXXXXXXX FUNDING AGENCY NAME : XXXXXXXXXXXXXXXXXXXXXXXXXXXX

CONTACT PERSON : XXXXXXXXXXXXXXXXXXXX JOB TITLE : XXXXXXXXXXXX

AGENCY ADDRESS : XXXXXXXXXXXXXXXXXXXXXXXXXXXX
XXXXXXXXXXXXXXXXXXXXXXXXXXXX
XXXXXXXXXXXXXXXXXXXXXXXXXXXX

PROGRAMME CODE : XXXXXXXXXXXX

PROGRAMME NAME : XXXXXXXXXXXXXXXXXXXXXXXXXXXX

START DATE : DD/MM/YYYY END DATE : DD/MM/YYYY

SECTOR : XXXXXXXXXXXX

PROGRAMME VALUE : \$\$\$, \$\$\$, \$\$\$, \$\$ AMOUNT DISBURSED TO DATE : \$\$\$, \$\$\$, \$\$\$, \$\$

LOAN REQUIREMENTS : XXXXXXXXXXXXXXXXXXXXXXXXXXXX
XXXXXXXXXXXXXXXXXXXXXXXXXXXX

ADDITIONAL FUNDING :-

ADDITIONAL FUNDING AMOUNT	DATE	DESCRIPTION
\$\$\$, \$\$\$, \$\$\$, \$\$	DD/MM/YYYY	XXXXXXXXXXXXXXXXXXXXXXXXXXXX

HELP - (F1), ADD - (F2), SAVE - (F3), DELETE - (F4), REFERENCE TABLE- (F7), QUIT - (F9)

JAMAICA PROMOTIONS CORPORATION
BUSINESS OPPORTUNITY REPORT BY SECTOR

DD/MM/YYYY

SECTOR : XXXXXXXXXXXXXXXXXXXX (leave blank for all)
STATUS : X

DD/MM/YYYY	BUSINESS OPPORTUNITY REPORT BY SECTOR						PAGE : NNNN
SECTOR	OPPORTUNITY	COMPANY	TYPE	STATUS	DATE	ABSTRACT	
XXXXXXXXXXXXXXXXXXXX	XXXXXXXXXXXXXXXXXXXX	XXXXXXXXXXXXXXXXXXXX	XXXXXXXXXXXX	XXXXXXXXXXXX	DD/MM/YYYY	XXXXXXXXXXXXXXXXXXXXXXXXXXXX XXXXXXXXXXXXXXXXXXXXXXXXXXXX	

HELP - (F1), ON SCREEN - (F5), PRINT - (F8), REFERENCE TABLE - (F7), QUIT - (F9)

ERROR MESSAGE LISTING

SYSTEM ERROR MESSAGE LISTING

**MESSAGE
NUMBER**

MESSAGE

20 ACCEPTED

Your entry has been validated correctly and accepted.

30 ACCESS VIOLATION

You do not have the rights to access the particular option.

35 ADDED

The transaction has been added to the database.

50 ALREADY PRINTED

Within a print option you are pressing print more than once, and the report went through the first time.

70 ALREADY SAVED

Within a save option you are pressing save more than once and the transaction has already been saved.

80 ALREADY VALIDATED

At an entry field the data entered has already been validated.

90 AMOUNT INCORRECT

The amount you have entered is not correct.

100 AMOUNT MUST BE GREATER THAN ZERO

Zero or negative values are not allowed in this field.

110 AMOUNT MUST BE GREATER THAN OR EQUAL TO ZERO

Zero but not negative values are allowed in this field.

115 ATTEMPTS TO ENTER SYSTEM FAILED

The user has tried unsuccessfully to enter the system at least three times. Needs a valid password and user i.d.

120 AT LEAST ONE PRICE MUST BE SET

A value must be entered for one of the prices.

125 A COMPANY CODE MUST BE ENTERED

This is a mandatory entry.

If an incorrect code is entered a popup of existing codes is automatically displayed.

130 A COMPANY CODE MUST BE ENTERED ON THE FIRST SCREEN

This option allows access to multiple screens and the company code of interest must be entered on the first screen i.e. screen 1.

Return to screen one and enter required code.

150 BUSINESS ADDRESS IS SAVED AS BUSINESS ADDRESS

If a business address is entered and no mailing address, then the business address is saved as the mailing address.

160 CLIENT ALREADY EXISTS.....RE-ENTER

You are trying to assign a code to a new client but this code has already been assigned.

Use a different code.

170 CLIENT IS ACTIVE AND THEREFORE CANNOT BE DELETED

The client is active i.e. has current projects and therefore cannot be deleted from the system.

Change the status of the company.

175 CLIENT IS NOT ACTIVE

The client is currently not active i.e. Jampro has rendered the client inactive and therefore no processing can be done on that client.

180 CODE ENTERED IS NO LONGER VALID.....RE-ENTER

The code entered has been deleted.

Choose another code.

200 DATABASE ERROR OCCURRED

Your database may be corrupted. Run the RE-INDEX utility before proceeding with the current operation.

205 DATABASE FILES IN USE - TRY AGAIN?

More than one users are trying to access the same file exclusively. Enter YES if you want to wait until the person is finished and try again; or NO if you wish to discontinue this operation for now.

210 DATE CANNOT BE GREATER THAN TODAY'S DATE

You are entering a date beyond the current system date, and that is not allowed. The date must be either the current date or before.

212 DATE MUST BE GREATER THAN SYSTEM START DATE

You are entering a date prior to the inception of the organisation. That is not allowed. The date must be on or after the inception of the organisation. See System Start Date in the "Setup System Dates" option of the UTILITIES module.

220 DATE CANNOT BE LESS THAN TODAY'S DATE

The date to be entered in this field cannot be before the current system date.

260 DELETED

The delete operation was completed successfully.

290 DO YOU WANT TO CONTINUE [Y/N] ?

Enter "Y"es if you wish to continue this operation or "N"o if you do not.

390 END OF YEAR PROCESS SUCCESSFULLY COMPLETED

The end of year process has been run to completion.

395 END DATE CANNOT BE GREATER THAN START DATE

For a date range you are entering a starting date that is after the ending date.

440 ENTRY OUT OF RANGE : RE-ENTER

A range of values is specified for entry, and your entry doesn't fall within this range.

460 FAILED TO ADD

The transaction entered was not added to the database. Mandatory entries have been omitted from the record.

465 FAILED TO DELETE

The transaction entered was not removed from the database. Mandatory entries have been omitted.

470 FAILED TO SAVE

The transaction entered was not saved. Mandatory entries have been omitted.

500 FIELD MUST BE LEFT BLANK

You have entered a value in a field that should be left empty.

510 JOB ALREADY IN PROGRESS

The current process has been started.....A key press cannot interrupt.

527 IMPORT PROCESS COMPLETED

The first step of the import process has been completed.

540 INFORMATION ALREADY EXISTS

You trying to add information to the system that is already there.

541 INVALID OWNERSHIP STRUCTURE CODE

The code entered for ownership structure doesn't exist..

Choose one from the popup or add this code, if needed

542 INVALID PROJECT / JAMPRO CODE

The project code entered is not found on the database.

Choose one from the popup or add this project, if needed.

543 INVALID BANK CODE ENTERED

The bank code entered is not found on the database.

Choose one from the popup or add this bank code, if needed.

544 INVALID FREQUENCY CODE

The frequency code entered is not found on the database.

Choose one from the popup or add this code, if needed.

545 INVALID DEPARTMENT / DIVISION CODE

The department code entered is not found on the database.

Choose one from the popup or add this code, if needed.

547 INVALID EMPLOYMENT CATEGORY CODE

The employment category code entered is not found on the database.

Choose one from the popup or add this code, if needed

548 INVALID OPPORTUNITY TYPE

The opportunity type you have entered is not found on the system. Shift + F1
- the help function will provide a list of valid entries

549 INVALID OPPORTUNITY STATUS

The status code you have entered is not valid. Valid status codes are displayed
at the bottom of the screen.

550 INVALID FACILITY CODE

The facility code entered is not found on the database.
Choose one from the popup or add this code, if needed.

551 CANNOT DELETE...SOME OPPORTUNITIES ARE MATCHED

The company is active with has matching opportunities and therefore cannot be
deleted.

552 INVALID SERVICE CODE ENTERED

The service code entered is not found on the database.
Choose one from the popup or add this code, if needed.

553 CANNOT DELETE OPPORTUNITY IS ALREADY MATCHED

The opportunity you are trying to delete has already been matched.

554 INVALID COUNTRY CODE

The country code entered is not found on the database.
Choose one from the popup or add this code, if needed.

555 INVALID SERVICE NUMBER ENTERED

The service number entered is not found on the database.

Choose one from the popup or add this number, if needed.

556 INVALID MARKET CODE ENTERED

The market code entered is not found on the database.

Choose one from the popup or add this code, if needed.

557 INVALID FUNDING AGENCY CODE ENTERED

The funding agency code entered is not found on the database.

Choose one from the popup or add this code, if needed.

558 INVALID SERVICE CODE ENTERED

The service code entered is not found on the database.

Choose one from the popup or add this code, if needed.

559 INVALID COMPANY CODE

The company code entered is not found on the database.

Choose one from the popup or add this code, if needed.

560 INVALID NUMBER FORMAT

The format you have entered for this number is incorrect. Check the HELP facility for the correct format.

563 INVALID STRUCTURE CODE

The structure code entered is not found on the database.

Choose one from the popup or add this code, if needed.

564 INVALID BUSINESS TYPE ENTERED

The business type entered is not found on the database.

Choose one from the popup or add this code, if needed.

565 INVALID BUSINESS CODE ENTERED

The business code entered is not found on the database.

Choose one from the popup or add this code, if needed.

566 INVALID SECTOR CODE

The sector code entered is not found on the database.

Choose one from the popup or add this code, if needed.

567 INVALID SUB-SECTOR CODE

The company code entered is not found on the database.

Choose one from the popup or add this code, if needed.

568 INVALID SUPPLIER CODE

The supplier code entered is not found on the database.

Choose one from the popup or add this code, if needed.

569 INVALID LOCATION CODE

The location code you have entered is not found on the system.

Choose one from the popup or add this code, if needed.

570 INVALID USER ID : ENTRY DENIED

The user id you have entered is not found on the system.

571 INVALID COMBINATION OF SECTOR & SUB-SECTOR

This sector does not have the sub-sector specified.

Choose one from the popup or add this code, if needed.

572 INVALID PASSWORDRE-TRY

The password you have entered for that user is incorrect. Try again.

575 INVALID PRODUCT CODE

The product / Harmonized System code you have entered is not found on the system.

Choose one from the popup or add this code, if needed.

576 INVALID PRODUCT GROUP

The code you have entered for the grouping of this product is not found on the system.

Choose one from the popup or add this code, if needed.

580 INVALID PASSWORD : ENTRY DENIED

The password you have entered for that user is incorrect.

582 INVALID TRANSPORT CODE

The transport code you have entered is not found on the system.

Choose one from the popup or add this code, if needed.

594 INVALID MENU CHOICE !! PLEASE TRY AGAIN !!

The number you have selected is not available on this menu.

Check the menu listing or display.

585 INVALID TRANSPORT AGENT

The transport agent code you have entered is not found on the system.

Choose one from the popup or add this code, if needed.

586 INVALID SPECIAL CLASS CODE

The special class code you have entered is not found on the system.

Choose one from the popup or add this code, if needed.

595 LOCATION CODE UNKNOWN

The location code you have entered is not found on the system.

Choose one from the popup or add this code, if needed.

600 MANDATORY FIELD : CANNOT BE LEFT BLANK

A value must be entered for this field.

611 MARKET CODE OR DESCRIPTION SHOULD NOT BE BLANK

Values must be entered for these fields.

620 NEW PASSWORD CANNOT BE SAME AS CURRENT

You have chosen to change your password but you are entering the same password as the new one. This is not allowed.

620 NEW PASSWORD CANNOT BE SAME AS CURRENT

You have chosen to change your password but you are entering the same password as the new one. This is not allowed

625 NEITHER NAME NOR ADDRESS CAN BE BLANK.

An entry must be made for the name and the first line of the address..

640 NO INFORMATION AVAILABLE

The requested information is not found on the system.

641 NO INFORMATION AVAILABLE.....CONTINUE

The requested information is not found on the system; however continue entering your data

642 INFORMATION AVAILABLE.....CONTINUE

The requested information is about to be displayed.....continue entering your data

660 NO MORE RECORDS FOUND

There is no other information on the system.

661 RECORD NUMBER DOES NOT EXIST

The record number entered does not exist.

Browse the records displayed to see what are the valid record numbers.

680 NO RECORDS FOUND

There is no information on the system for the criteria indicated.

685 NO RECORD CURRENTLY ACCESSED

You are trying to retrieve information but the i.d. has not been entered.

688 PASSWORD HAS BEEN CHANGED

Your new password has been assigned to you.

**720 PERMISSION DENIED : YOU DO NOT HAVE ACCESS TO
THIS OPTION**

You do not have any rights to this option, or to perform this operation.

725 PURGE COMPLETED SUCCESSFULLY

The purge process has run to completion.

728 PRESS <ESC> TO CONTINUE

Press the escape key when this message is displayed to continue processing.

729 PRESS <!> TO EDIT ABSTRACT FIELD

Press the Shift + 1 key when this message is displayed to allow editing of the
ABSTRACT entry.

730 SPOOLING TO PRINTER

The report is in progress.

735 PRINTER IS NOT ON-LINE

The printer to which the report is to be sent is off-line.

738 RECORD DELETED

The record indicated have been deleted.

739 RECORD ALREADY EXISTS.....RE-ENTER

You are trying to add a record that already exists.....Re-enter the code or edit the existing record.

740 RE-ENTER NEW PASSWORD

When changing your password you are asked to re-type your password for verification purposes.

741 RE-INDEXING COMPLETED

The indexes for all tables in your database have been rebuilt.

743 REPORT ABOUT TO BE PRINTED

Message to prompt you to check that the printer is on-line and has the right size paper.

744 REPORT PRINTED

The report is finished.

745 SAME PASSWORD MUST BE RE-ENTERED

You have re-typed your password incorrectly.

750 DATABASE UPDATED SUCCESSFULLY

Your changes have been saved to the system.

760 SAVED BEFORE CALLING NEXT SCREEN

The entries you have made on this screen will be written to the database before you go to the next screen.

765 SORRY, NO DATA WAS FOUND FOR THIS COMPANY

You are trying to access a company that has does not exist.

Choose one from the popup or add this code, if needed.

768 SORRY, RECORD HAS ALREADY BEEN DELETED OR SO MARKED

You are trying to access a record that has already been removed from the system. A backup before the purge would have to be restored if it necessary to access the data.(See System Administartor)

770 SORRY, NO HELP AVAILABLE

There is no help for this field. This is usually a name or description field which accepts any character data between 20 and 30 characters long.

771 SUPPLIER CODE ALREADY EXISTS

The code you are assigning to this supplier was already assigned to another.

773 SYSTEM BACKUP COMPLETED

The backup process has been completed.

775 SYSTEM RESTORE COMPLETED

The datafiles have been restored.

780 THIS RECORD HAS BEEN MARKED FOR DELETION

The record being sought cannot be accessed as it has already been marked for deletion.

785 TOTAL OWNERSHIP CANNOT BE GREATER THAN 100 %

The total of the percentages entered cannot be greater than 100.

**787 TOTAL EXPORT PERCENTAGE CANNOT BE GREATER THAN
100 %**

The total of the percentages entered cannot be greater than 100.

789 INPUT PERCENTAGE CANNOT BE GREATER THAN 100 %

The total of the percentages entered cannot be greater than 100.

790 USER ID ALREADY EXISTS

You are trying to assign the same user i.d. to two users. That is not allowed.

795 FUNDING AGENCY CODE ALREADY EXISTS

You are trying to add a code for a funding agency, but the code is used already.....Check your codes and re-assign them or edit the existing agency record.

800 VALIDATED

Your entry has validated correctly.

850 VALID VALUES ARE : Y, N

The only entries that will be accepted for this field are "Y" or "N".

890 VALUE MUST BE GREATER THAN ZERO

Only positive values are allowed. Zero is not accepted.

900 VALUE MUST BE GREATER THAN OR EQUAL TO ZERO

Negative entries are not allowed.

910 VALUE MUST BE LESS THAN ZERO

Only negative entries are allowed.

920 VALUE MUST BE LESS THAN OR EQUAL TO ZERO

The entry cannot be greater than zero.

950 YEAR CANNOT BE LATER THAN CURRENT YEAR

The year in the date cannot be greater than this financial year.

**960 YEAR CANNOT BE LESS THAN THE CURRENT YEAR
MINUS ONE**

The year in the date cannot be less than the previous financial year.

970 YEAR MUST BE CURRENT OR NEXT YEAR

The date entered must fall between the start of the current year and the end of the next inclusive.

980 YOU ARE NOT ALLOWED TO SAVE

The user doesn't have the rights to save anything in the system.

981 YOU ARE NOT ALLOWED TO PRINT

The user doesn't have the rights to print information from this system.

982 YOU ARE NOT ALLOWED TO ADD

The user doesn't have the rights to add data to the system.

983 YOU ARE NOT ALLOWED TO DISPLAY

The user doesn't have the rights to display information from this system.

984 YOU ARE NOT ALLOWED TO DELETE

The user doesn't have the rights to delete information from the system.

985 YOU ARE NOT ALLOWED TO MAKE CHANGES

The user doesn't have the rights to edit the data in the system.

989 YOU MUST ENTER A MARKET CODE

A market code must be entered here. If an invalid entry is made a popup is displayed of all the valid entries. One may be chosen from here.

990 YOU MUST ENTER A PRODUCT CODE

A product code must be entered here. If an invalid entry is made a popup is displayed of all the valid entries. One may be chosen from here.

999 SYSTEM ERROR

An error not identified here has occurred. The system will shut down. Re-start the system and run the re-index utility before doing anything else. If this recurs inform your System Administrator as soon as possible.