



TOGETHER
for a sustainable future

OCCASION

This publication has been made available to the public on the occasion of the 50th anniversary of the United Nations Industrial Development Organisation.



TOGETHER
for a sustainable future

DISCLAIMER

This document has been produced without formal United Nations editing. The designations employed and the presentation of the material in this document do not imply the expression of any opinion whatsoever on the part of the Secretariat of the United Nations Industrial Development Organization (UNIDO) concerning the legal status of any country, territory, city or area or of its authorities, or concerning the delimitation of its frontiers or boundaries, or its economic system or degree of development. Designations such as “developed”, “industrialized” and “developing” are intended for statistical convenience and do not necessarily express a judgment about the stage reached by a particular country or area in the development process. Mention of firm names or commercial products does not constitute an endorsement by UNIDO.

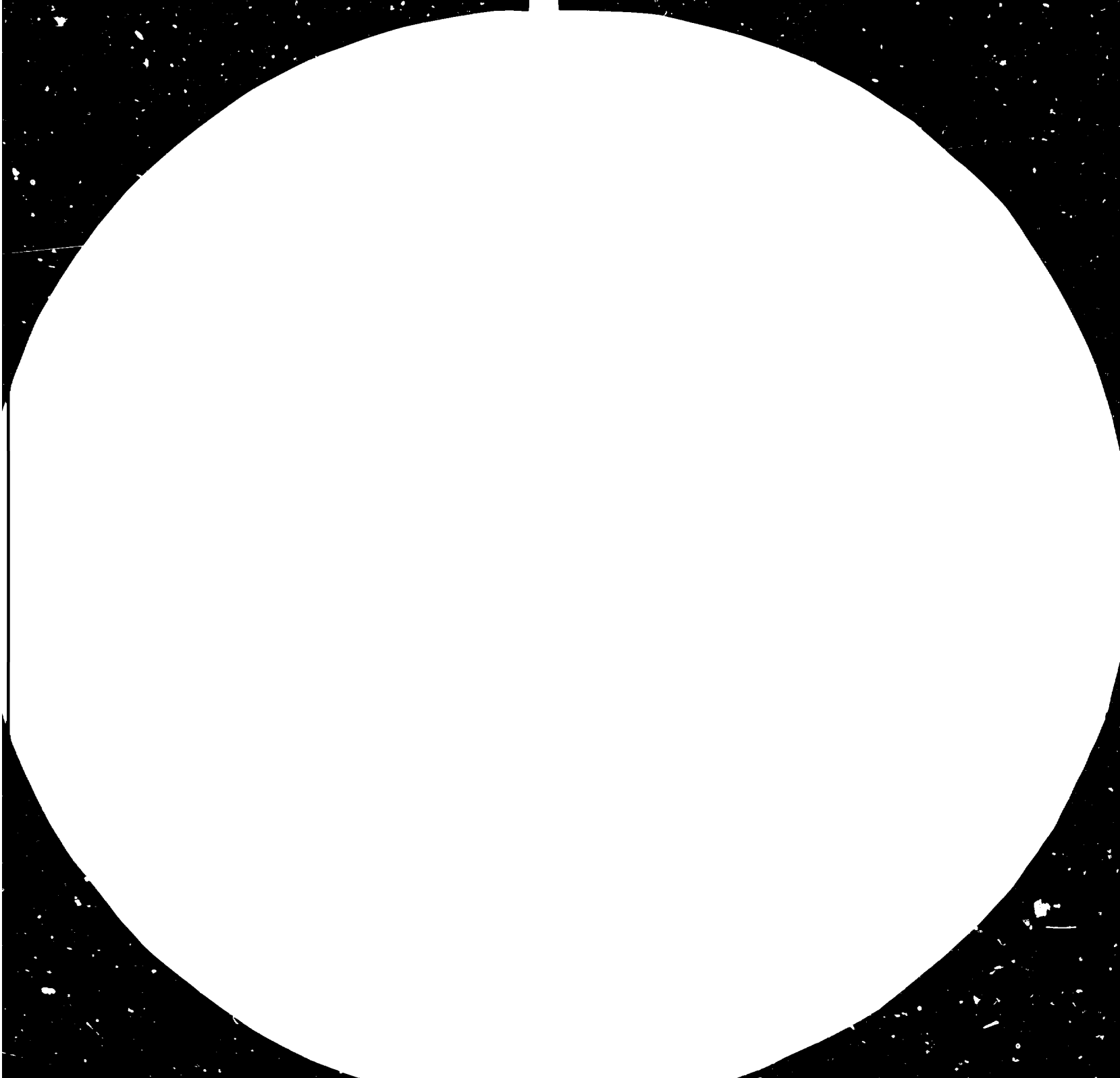
FAIR USE POLICY

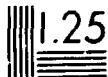
Any part of this publication may be quoted and referenced for educational and research purposes without additional permission from UNIDO. However, those who make use of quoting and referencing this publication are requested to follow the Fair Use Policy of giving due credit to UNIDO.

CONTACT

Please contact publications@unido.org for further information concerning UNIDO publications.

For more information about UNIDO, please visit us at www.unido.org





MICROCOPY RESOLUTION TEST CHART

NATIONAL BUREAU OF STANDARDS-1963-A

12594

Distr.
LIMITED

UNIDO/IS.305
31 May 1983

UNITED NATIONS
INDUSTRIAL DEVELOPMENT ORGANIZATION

ENGLISH

AN INVENTORY OF INDUSTRIAL STATISTICS
IN THE UNIDO DATA BASE

Prepared by the
Statistics and Survey Unit
Division for Industrial Studies

* This document has been reproduced without formal editing. The designations employed and the presentation of material do not imply the expression of any opinion whatsoever on the part of the Secretariat of the United Nations concerning the legal status of any country or its authorities, or concerning the delimitation of its frontiers.

645

CONTENTS

Explanatory notes	(iv)
Key to table numbers and symbols used	(viii)

Country tables

Afghanistan	1
Algeria	2
Angola	3
Argentina	4
Australia	5
Austria	6
Bahamas	7
Bahrain	8
Bangladesh	9
Barbados	10
Belgium	11
Belize	15
Benin	36
Bolivia	12
Botswana	13
Brazil	14
Bulgaria	17
Burma	18
Burundi	19
Canada	22
Cape Verde	23
Central African Republic	24
Chad	26
Chile	27
China	28
Colombia	29
Congo	30
Costa Rica	32
Cuba	33
Cyprus	34
Czechoslovakia	35
Democratic Kampuchea	20
Democratic Yemen	123
Denmark	37
Dominican Republic	38
Egypt	140
El Salvador	40
Ethiopia	41
Ecuador	39
Fiji	42
Finland	43
France	44
Gabon	45
Gambia	46
German Democratic Republic	47

Germany, Federal Republic of	48
Ghana	49
Greece	50
Guatemala	51
Guinea	52
Guyana	53
Haiti	54
Honduras	55
Hong Kong	56
Hungary	57
Iceland	58
India	59
Indonesia	60
Iran	61
Iraq	62
Ireland	63
Israel	64
Italy	65
Ivory Coast	66
Jamaica	67
Japan	68
Jordan	69
Kenya	70
Korea, Republic of	71
Kuwait	72
Lao People's Democratic Republic	73
Lebanon	74
Lesotho	75
Liberia	76
Libyan Arab Jamahiriya	77
Luxembourg	78
Macau	79
Madagascar	80
Malawi	81
Malaysia Sabah	83
Malaysia, Sarawak	84
Malaysia, West	82
Mali	85
Malta	86
Mauritania	87
Mauritius	88
Mexico	89
Mongolia	90
Morocco	91
Mozambique	92
Namibia	94
Nepal	95
Netherlands	96
Netherlands Antilles	97
New Zealand	98
Nicaragua	99
Niger	100
Nigeria	101
Norway	102

Oman	93
Pakistan	103
Panama	104
Papua New Guinea	105
Paraguay	106
Peru	107
Philippines	108
Poland	109
Portugal	110
Puerto Rico	111
Republic of Tanzania	142
Reunion	112
Romania	113
Rwanda	114
Samoa	147
Saudi Arabia	115
Senegal	116
Seychelles	117
Sierra Leone	118
Singapore	119
Solomon Islands	16
Somalia	120
South Africa	121
Spain	124
Sri Lanka	25
Sudan	125
Suriname	126
Swaziland	127
Sweden	128
Switzerland	129
Syrian Arab Republic	130
Thailand	131
Togo	132
Tonga	133
Trinidad and Tobago	134
Tunisia	136
Turkey	137
Uganda	138
Union of Soviet Socialist Republics	139
United Arab Emirates	135
United Kingdom	141
United Republic of Cameroon	21
United States	143
Upper Volta	144
Uruguay	145
Venezuela	146
Yemen	148
Yugoslavia	149
Zaire	31
Zambia	150
Zimbabwe	122
Appendix - Definition of variables.....	151

Explanatory Notes

The attached print-outs are an inventory of industrial statistics available in the UNIDO data base (UDB), covering selected years. The UDB was created and is maintained by the Statistics and Survey Unit (SSU) of the Division for Industrial Studies. This inventory has been designed for the convenience of in-house users who wish to quickly evaluate the general condition of the data for many applications. Comments and suggestions for its improvement will be greatly appreciated.

For all tables based on the industrial statistics file of the UDB, the following source note is suggested:

"Source: UNIDO data base; information supplied by the Statistical Office of the United Nations, with estimates by the UNIDO secretariat."

A description of the format of the inventory, a general definition of the variables included, and a key to table numbers and symbols used, are provided below. These notes refer specifically to the inventory, and therefore special characteristics of the data are described only where it would be necessary for correct interpretation of the print-outs. Users requiring detailed information on the contents of the industrial statistics file should contact the SSU.

A. Format. Each page summarizes the status of the industrial data for one country. The page is divided into six panels, five of which show the availability of statistics concerning the five most commonly used variables (employment, wages and salaries, gross output, value added and the production indexes) at the 3-digit (branch) level of the International Standard Industrial Classification^{1/} (ISIC). The columns show ISIC branches and the rows show years. Wherever data are available, either an asterisk or a 'C' is placed in the appropriate cell - an asterisk to denote that the

1/ International Standard Industrial Classification of All Economic Activities (ST/STAT/SER.M/4 Rev.2), United Nations, 1968.

data refer only to a single ISIC branch, and a 'C' to denote that data for the branch are combined with data for one or more other branches.^{2/}

Details on the ISIC location of available data are also supplemented by an indicator of the relative importance of those ISIC branches to which available data refer. Just above the year headings on the panels, a plus sign (+) appears wherever the sum of the 1975 base weights^{3/} corresponding to ISIC branches covered by data exceeds 80 per cent of all the 1975 base weights within the manufacturing sector.

The sixth panel is a summary, by year, of the number of ISIC 3-digit branches (out of a possible 28) that are covered by data for each of the eight variables in the industrial statistics file^{4/}. It refers not only to the five variables for which separate panels are shown, but also summarizes the availability of data on the number of establishments, the quantity of electricity consumed and gross fixed capital formation.

B. Definition of variables. Although the data generally conform to the international definitions as recommended by the United Nations,^{5/} the UDB statistical series for tables 01, 04, 14 and 20 require additional explanation. For each of these tables, the international recommendations recognize alternative definitions, and differences in definition will be reflected numerically in the data. At the same time, the primary purpose for

^{2/} Within this format, it is not possible to distinguish which of the ISIC branches are combined. However, details on the ISIC composition of each item of data can be supplied, on request. ISIC combinations are also identified in the data base by means of a letter code, and a key to these combination codes is available on request.

^{3/} The base weights, i.e. value added, 1975, in U.S. dollars, at the 3-digit (branch) level of ISIC, are regarded as the best available indicator of the significance of a particular branch of industrial activity within a country's manufacturing sector.

^{4/} Actually, the industrial statistics file in the UDB contains 14 data fields, although only eight belong to the "consolidated" subset covered by this inventory. For further discussion of this point, see section B, "Definition of variables", below.

^{5/} International Recommendations for Industrial Statistics (ST/STAT/SER.M/48), United Nations, 1968.

developing the UDB series inventoried here was to store, at a single, machine-readable location, the greatest possible country coverage for each variable at the 3-digit level of ISIC, over the longest possible period of time. In order to achieve this end, certain concessions have had to be made regarding definitional differences, with the result that for the four consolidated tables mentioned above, the data may be mixed.

Consolidation produces some degree of incomparability in the data across countries, but this could be viewed as but one source of data incomparability. A more serious one concerns differences in country practices regarding variations in the coverage of establishments (often the exclusion of small establishments) in industrial inquiries on which the data are based. However, occasionally consolidation also results in incomparability of the data within an individual country over time, and this may present more serious problems for some applications of the data set.^{6/}

The main features of the consolidation process are as follows:

For table 01, which is the number of statistical units, most countries report on an establishment basis, but some countries report the number of enterprises. Consolidated table 01 of the UDB contains data based on whichever concept has been adopted for each country's reporting system.

For table 04, employment, the preferred indicator is the average number of employees, although the number of persons engaged is accepted if it is the only series available. However, if both series are available for some years, selection of one or the other definition is guided by the criterion that consistency of the definition through time is more important than entering data on the number of employees everywhere possible. For this reason, data on the number of persons engaged has sometimes been selected for the consolidated table.

^{6/} Users engaged in analyses for which the numerical effects of this mixing would present a serious limitation on the data's utility are advised that unconsolidated series are also available in the UDB, but of course with more limited time depth and country coverage. For further information, please consult the SSU.

(vii)

For tables 14 and 20, the variation in definition relates to the valuation of gross output and value added. The coding system of the UDB distinguishes between two commonly used valuation concepts, producers' prices and factor values. Either valuation is accepted,^{7/} and as in the case of the employment data, the main criterion for selecting one or the other (when there is a choice) is to assure maximum consistency of the valuation concept within a country, both between variables and through time.

An overview of the country data for each of the four consolidated tables affected by differences in definition is provided in the appendix.

^{7/} In cases where the valuation is unknown, the data are also accepted in the consolidation process.

Key to Table Numbers and Symbols Used

Tables:

- 01 = Number of statistical units (establishments or enterprises).
- 04 = Employment (average number of employees or persons engaged).
- 05 = Wages and salaries paid to employees, in current national currency.
- 11 = Quantity of electricity consumed.
- 14 = Gross output in current national currency (valuation at factor values or producers' values or unknown).
- 20 = Value added in current national currency (valuation at factor values or producers' values or unknown).
- 21 = Gross fixed capital formation in current national currency.
- 51 = Index numbers of industrial production, 1975 = 100.

Symbols:

- ... = Data are not available.
- * = Data available at the 3-digit (branch) level of ISIC.
- C = Data covering this ISIC branch are available but are combined with data for one or more other branches.
- + = 1975 base weight coverage of country data for this table and year exceeds 80 per cent of the base weights for all manufacturing industries.

TABLE 04 EMPLOYMENT

TABLE 05 WAGES AND SALARIES

TABLE 14 GROSS OUTPUT

YEAR	6	6	7	7	7	7	7	7	7	8	8				
ISIC	3	6	9	0	1	2	3	4	5	6	7	8	9	0	1
311															
313															
314															
321															
322															
323															
324															
331															
332															
341															
342															
351															
352															
353															
354															
355															
356															
361															
362															
369															
371															
372															
381															
382															
383															
384															
385															
390															

TABLE 20 VALUE ADDED

TABLE 51 PRODUCTION INDEXES

YEAR	6	6	7	7	7	7	7	7	7	8	8				
ISIC	3	6	9	0	1	2	3	4	5	6	7	8	9	0	1
311															
313															
314															
321															
322															
323															
324															
331															
332															
341															
342															
351															
352															
353															
354															
355															
356															
361															
362															
369															
371															
372															
381															
382															
383															
384															
385															
390															

NUMBER OF ISIC BRANCHES COVERED

TABLE

01 04 05 11 14 20 21 51

YEAR

1963

1964

1964

1970

1971

1972

1973

1974

1975

1976

1977

1978

1979

1980

1981

27 27

27 27 28

27 27 28

27 27 28

27 27 28

27 27 28

27 27 28

27 27 28

27 27 28

27 27 28

27 27 28

27 27 28

NOTE: TABLE 01=NUMBER OF STATISTICAL UNITS
 TABLE 11=QTY. OF ELECTRICITY CONSUMED
 TABLE 21=GROSS FIXED CAPITAL FORMATION

TABLE 04 EMPLOYMENT

TABLE 05 WAGES AND SALARIES

TABLE 14 GROSS OUTPUT

YEAR 6 6 6 7 7 7 7 7 7 7 7 8 8		YEAR 6 6 6 7 7 7 7 7 7 7 7 8 8		YEAR 6 6 6 7 7 7 7 7 7 7 7 8 8	
ISIC	3 6 9 0 1 2 3 4 5 6 7 8 9 0 1	ISIC	3 6 9 0 1 2 3 4 5 6 7 8 9 0 1	ISIC	3 6 9 0 1 2 3 4 5 6 7 8 9 0 1
311	* C	311	* C	311	* C
312	* C	312	* C	312	* C
314	* C	314	* C	314	* C
321	* C	321	* C	321	* C
322	* C	322	* C	322	* C
323	* C	323	* C	323	* C
324	* C	324	* C	324	* C
331	* C	331	* C	331	* C
332	* C	332	* C	332	* C
341	* C	341	* C	341	* C
342	* C	342	* C	342	* C
351	* C	351	* C	351	* C
352	* C	352	* C	352	* C
353	* C	353	* C	353	* C
354	* C	354	* C	354	* C
355	* C	355	* C	355	* C
356	* C	356	* C	356	* C
361	* C	361	* C	361	* C
362	* C	362	* C	362	* C
369	* C	369	* C	369	* C
371	* C	371	* C	371	* C
372	* C	372	* C	372	* C
381	* C	381	* C	381	* C
382	* C	382	* C	382	* C
383	* C	383	* C	383	* C
384	* C	384	* C	384	* C
385	* C	385	* C	385	* C
390	* C	390	* C	390	* C

TABLE 20 VALUE ADDED

TABLE 51 PRODUCTION INDEXES

YEAR 6 6 6 7 7 7 7 7 7 7 7 8 8		YEAR 6 6 6 7 7 7 7 7 7 7 7 8 8		NUMBER OF ISIC BRANCHES COVERED							
ISIC	3 6 9 0 1 2 3 4 5 6 7 8 9 0 1	ISIC	3 6 9 0 1 2 3 4 5 6 7 8 9 0 1	TABLE							
311	* C	311	*	01	04	05	11	14	20	21	51
312	* C	312	*								
314	* C	314	*								
321	* C	321	*								
322	* C	322	*								
323	* C	323	*								
324	* C	324	*								
331	* C	331	*								
332	* C	332	*								
341	* C	341	*								
342	* C	342	*								
351	* C	351	*								
352	* C	352	*								
353	* C	353	*								
354	* C	354	*								
355	* C	355	*								
356	* C	356	*								
361	* C	361	*								
362	* C	362	*								
369	* C	369	*								
371	* C	371	*								
372	* C	372	*								
381	* C	381	*								
382	* C	382	*								
383	* C	383	*								
384	* C	384	*								
385	* C	385	*								
390	* C	390	*								
				1963							25
				1966	24	28	28		24	28	24
				1969	26	26	26		26	26	28
				1970							28
				1971							28
				1972							28
				1973							28
				1974							28
				1975							28
				1976							28
				1977							27
				1978							2
				1979							
				1980							
				1981							

NOTE: TABLE 01=NUMBER OF STATISTICAL UNITS
TABLE 11=QTY. OF ELECTRICITY CONSUMED
TABLE 21=GROSS FIXED CAPITAL FORMATION

TABLE 04 EMPLOYMENT

TABLE 05 WAGES AND SALARIES

TABLE 14 GROSS OUTPUT

YEAR	6	6	7	7	7	7	7	7	7	8	8				
ISIC	3	6	9	0	1	2	3	4	5	6	7	8	9	0	1
311															
312															
313															
314															
321															
322															
323															
324															
331															
332															
341															
342															
351															
352															
353															
354															
355															
356															
361															
362															
369															
371															
372															
381															
382															
383															
384															
385															
390															

TABLE 20 VALUE ADDED

TABLE 51 PRODUCTIVITY INDEXES

YEAR	6	6	7	7	7	7	7	7	7	8	8				
ISIC	3	6	9	0	1	2	3	4	5	6	7	8	9	0	1
311															
312															
313															
314															
321															
322															
323															
324															
331															
332															
341															
342															
351															
352															
353															
354															
355															
356															
361															
362															
369															
371															
372															
381															
382															
383															
384															
385															
390															

NUMBER OF ISIC BRANCHES COVERED

TABLE

01 04 05 11 14 20 21 51

YEAR

1963

1969

1969

1970

1971

1972

1973

1974

1975

1976

1977

1978

1979

1980

1981

NOTE: TABLE 01=NUMBER OF STATISTICAL UNITS

TABLE 11=QTY. OF ELECTRICITY CONSUMED

TABLE 21=GROSS FIXED CAPITAL FORMATION

TABLE 04 EMPLOYMENT													TABLE 05 WAGES AND SALARIES													TABLE 14 GROSS OUTPUT												
ISIC	YEAR 6 6 6 7 7 7 7 7 7 7 7 8 8 3 6 9 0 1 2 3 4 5 6 7 8 9 0 1												ISIC	YEAR 6 6 6 7 7 7 7 7 7 7 7 8 8 3 6 9 0 1 2 3 4 5 6 7 8 9 0 1												ISIC	YEAR 6 6 6 7 7 7 7 7 7 7 7 8 8 3 6 9 0 1 2 3 4 5 6 7 8 9 0 1											
311													311													311												
312													312													312												
314													314													314												
321													321													321												
322													322													322												
323													323													323												
324													324													324												
331													331													331												
332													332													332												
341													341													341												
342													342													342												
351													351													351												
352													352													352												
353													353													353												
354													354													354												
355													355													355												
356													356													356												
361													361													361												
362													362													362												
369													369													369												
371													371													371												
372													372													372												
381													381													381												
382													382													382												
383													383													383												
384													384													384												
385													385													385												
390													390													390												

TABLE 20 VALUE ADDED													TABLE 51 PRODUCTION INDEXES													NUMBER OF ISIC BRANCHES COVERED						
ISIC	YEAR 6 6 6 7 7 7 7 7 7 7 7 8 8 3 6 9 0 1 2 3 4 5 6 7 8 9 0 1												ISIC	YEAR 6 6 6 7 7 7 7 7 7 7 7 8 8 3 6 9 0 1 2 3 4 5 6 7 8 9 0 1												TABLE						
311													311																			
313													313																			
314													314																			
321													321																			
322													322																			
323													323																			
324													324																			
331													331																			
332													332																			
341													341																			
342													342																			
351													351																			
352													352	* * * * *												1963 6						
353													353	* * * * *												1966 6						
354													354	* * * * *												1969 6						
355													355	* * * * *												1970 6						
356													356	* * * * *												1971 6						
361													361													1972 6						
362													362													1973 6						
369													369													1974 6						
371													371	* * * * *												1975 21						
372													372	* * * * *												1976 6						
381													381													1977 6						
382													382	* * * * *												1978 6						
383													383													1979 6						
384													384													1980 6						
385													385													1981 6						
390													390																			

NOTE: TABLE 01=NUMBER OF STATISTICAL UNITS
 TABLE 11=QTY. OF ELECTRICITY CONSUMED
 TABLE 21=GROSS FIXED CAPITAL FORMATION

TABLE 04 EMPLOYMENT													TABLE 05 WAGES AND SALARIES													TABLE 14 GROSS OUTPUT												
ISIC	YEAR 6	6	6	7	7	7	7	7	7	7	7	8	ISIC	YEAR 6	6	6	7	7	7	7	7	7	7	7	8	ISIC	YEAR 6	6	6	7	7	7	7	7	7	7	7	8
	3	6	9	0	1	2	3	4	5	6	7	8		3	6	9	0	1	2	3	4	5	6	7	8		3	6	9	0	1	2	3	4	5	6	7	8
311	311	311		
312	312	312		
313	313	313		
314	314	314		
321	321	321		
322	322	322		
323	323	323		
324	324	324		
331	331	331		
332	332	332		
341	341	341		
342	342	342		
351	351	351		
352	352	352		
353	353	353		
354	354	354		
355	355	355		
356	356	356		
361	361	361		
362	362	362		
369	369	369		
371	371	371		
372	372	372		
381	381	381		
382	382	382		
383	383	383		
384	384	384		
385	385	385		
390	390	390		

TABLE 20 VALUE ADDED													TABLE 5. PRODUCTION INDEXES													NUMBER OF ISIC BRANCHES COVERED							
ISIC	YEAR 6	6	6	7	7	7	7	7	7	7	7	8	ISIC	YEAR 6	6	6	7	7	7	7	7	7	7	7	8	TABLE							
	3	6	9	0	1	2	3	4	5	6	7	8		3	6	9	0	1	2	3	4	5	6	7	8	01	04	05	11	14	20	21	41
311	311									
312	312									
313	313									
314	314									
321	321									
322	322									
323	323									
324	324									
331	331									
332	332									
341	341									
342	342									
351	351									
352	352									
353	353									
354	354									
355	355									
356	356									
361	361									
362	362									
369	369									
371	371									
372	372									
381	381									
382	382									
383	383									
384	384									
385	385									
390	390									

NOTE: TABLE 01=NUMBER OF STATISTICAL UNITS
 TABLE 11=QTY. OF ELECTRICITY CONSUMED
 TABLE 21=GROSS FIXED CAPITAL FORMATION

TABLE 04 EMPLOYMENT												TABLE 05 WAGES AND SALARIES												TABLE 14 GROSS OUTPUT											
YEAR	6	6	6	7	7	7	7	7	7	7	8	YEAR	6	6	6	7	7	7	7	7	7	7	8	YEAR	6	6	6	7	7	7	7	7	7	7	8
ISIC	3	6	9	0	1	2	3	4	5	6	7	ISIC	3	6	9	0	1	2	3	4	5	6	7	ISIC	3	6	9	0	1	2	3	4	5	6	7
311	*	*	*	*	*	*	*	*	*	*	*																								
312	*	*	*	*	*	*	*	*	*	*	*																								
314	*	*	*	*	*	*	*	*	*	*	*																								
321	*	*	*	*	*	*	*	*	*	*	*																								
322	*	*	*	*	*	*	*	*	*	*	*																								
323	*	*	*	*	*	*	*	*	*	*	*																								
324	*	*	*	*	*	*	*	*	*	*	*																								
331	C	C	C	C	C	C	C	C	C	C	C																								
332	C	C	C	C	C	C	C	C	C	C	C																								
341	*	*	*	*	*	*	*	*	*	*	*																								
342	*	*	*	*	*	*	*	*	*	*	*																								
351	C	C	C	C	C	C	C	C	C	C	C																								
352	C	C	C	C	C	C	C	C	C	C	C																								
353	C	C	C	C	C	C	C	C	C	C	C																								
354	C	C	C	C	C	C	C	C	C	C	C																								
355	*	*	*	*	*	*	*	*	*	*	*																								
356	C	C	C	C	C	C	C	C	C	C	C																								
361	C	C	C	C	C	C	C	C	C	C	C																								
362	*	*	*	*	*	*	*	*	*	*	*																								
369	C	C	C	C	C	C	C	C	C	C	C																								
371	C	C	C	C	C	C	C	C	C	C	C																								
372	C	C	C	C	C	C	C	C	C	C	C																								
381	*	*	*	*	*	*	*	*	*	*	*																								
382	C	C	C	C	C	C	C	C	C	C	C																								
383	C	C	C	C	C	C	C	C	C	C	C																								
384	C	C	C	C	C	C	C	C	C	C	C																								
385	C	C	C	C	C	C	C	C	C	C	C																								
390	C	C	C	C	C	C	C	C	C	C	C																								

TABLE 20 VALUE ADDED												TABLE 51 PRODUCTION INDEXES												NUMBER OF ISIC BRANCHES COVERED							
YEAR	6	6	6	7	7	7	7	7	7	7	8	YEAR	6	6	6	7	7	7	7	7	7	7	8	TABLE							
ISIC	3	6	9	0	1	2	3	4	5	6	7	ISIC	3	6	9	0	1	2	3	4	5	6	7	01	04	05	11	14	20	21	51
311	C	C	C	C	C	*	*	*	*	*	*																				
313	C	C	C	C	C	*	*	*	*	*	*																				
314	*	*	*	*	*	*	*	*	*	*	*																				
321	*	*	*	*	*	*	*	*	*	*	*																				
322	*	*	*	*	*	*	*	*	*	*	*																				
323	C	C	C	C	C	C	C	C	C	C	C																				
324	*	*	*	*	*	*	*	*	*	*	*																				
331	*	*	*	*	*	*	*	*	*	*	*																				
332	*	*	*	*	*	*	*	*	*	*	*																				
341	*	*	*	*	*	*	*	*	*	*	*																				
342	*	*	*	*	*	*	*	*	*	*	*																				
351	C	C	C	C	C	C	C	C	C	C	C																				
352	C	C	C	C	C	C	C	C	C	C	C																				
353	C	C	C	C	C	C	C	C	C	C	C																				
354	C	C	C	C	C	C	C	C	C	C	C																				
355	*	*	*	*	*	*	*	*	*	*	*																				
356	C	C	C	C	C	C	C	C	C	C	C																				
361	C	C	C	C	C	C	C	C	C	C	C																				
362	C	C	C	C	C	C	C	C	C	C	C																				
369	C	C	C	C	C	C	C	C	C	C	C																				
371	*	*	*	*	*	*	*	*	*	*	*																				
372	*	*	*	*	*	*	*	*	*	*	*																				
381	C	C	C	C	C	C	C	C	C	C	C																				
382	C	C	C	C	C	C	C	C	C	C	C																				
383	C	C	C	C	C	C	C	C	C	C	C																				
384	C	C	C	C	C	C	C	C	C	C	C																				
385	C	C	C	C	C	C	C	C	C	C	C																				
390	C	C	C	C	C	C	C	C	C	C	C																				

NUMBER OF ISIC BRANCHES COVERED													
TABLE													
	01	04	05	11	14	20	21	51					
YEAR													
1963	2A	2A	2A	16		2A	2A	2A					
1966	2A	2A	2A	2A		2A	2A	2A					
1969	2A	2A	2A	2A		2A	2A	2A					
1970	2A	2A	2A	2A		2A	2A	2A					
1971	2A	2A	2A	2A		2A	2A	2A					
1972	2A	2A	2A	2A		2A	2A	2A					
1973	2A	2A	2A	2A		2A	27	2A					
1974	2A	2A	2A	2A		2A	2A	2A					
1975	2A	2A	2A	2A		2A	2A	2A					
1976	2A	2A	2A	2A		2A	2A	2A					
1977	2A	2A	2A	2A		2A	2A	2A					
1978	2A	2A	2A	2A		2A	2A	2A					
1979	2A	2A	2A	2A		2A	2A	2A					
1980	2A	2A	2A	2A		2A	2A	2A					
1981								2A					

NOTE: TABLE 01=NUMBER OF STATISTICAL UNITS
 TABLE 11=QTY. OF ELECTRICITY CONSUMED
 TABLE 21=GROSS FIXED CAPITAL FORMATION

TABLE 04 EMPLOYMENT

TABLE 05 WAGES AND SALARIES

TABLE 14 GROSS OUTPUT

YEAR 6 6 6 7 7 7 7 7 7 7 7 8 8	YEAR 6 6 6 7 7 7 7 7 7 7 7 8 8	YEAR 6 6 6 7 7 7 7 7 7 7 7 8 8
ISIC 3 6 9 0 1 2 3 4 5 6 7 8 9 0 1	ISIC 3 6 9 0 1 2 3 4 5 6 7 8 9 0 1	ISIC 3 6 9 0 1 2 3 4 5 6 7 8 9 0 1
311	311	311
313	313	313
314	314	314
321	321	321
322	322	322
323	323	323
324	324	324
331	331	331
332	332	332
341	341	341
342	342	342
351	351	351
352	352	352
353	353	353
354	354	354
355	355	355
356	356	356
361	361	361
362	362	362
369	369	369
371	371	371
372	372	372
381	381	381
382	382	382
383	383	383
384	384	384
385	385	385
390	390	390

TABLE 20 VALUE ADDED

TABLE 51 PRODUCTION INDEXES

YEAR 6 6 6 7 7 7 7 7 7 7 8 8	YEAR 6 6 6 7 7 7 7 7 7 7 8 8	NUMBER OF ISIC BRANCHES COVERED									
ISIC 3 6 9 0 1 2 3 4 5 6 7 8 9 0 1	ISIC 3 6 9 0 1 2 3 4 5 6 7 8 9 0 1	TABLE									
		01	04	05	11	14	20	21	51		
311	311
313	313
314	314
321	321
322	322
323	323
324	324
331	331
332	332
341	341
342	342
351	351
352	352
353	353
354	354
355	355
356	356
361	361
362	362
369	369
371	371
372	372
381	381
382	382
383	383
384	384
385	385
390	390

NOTE: TABLE 01=NUMBER OF STATISTICAL UNITS
 TABLE 11=QTY. OF ELECTRICITY CONSUMED
 TABLE 21=GROSS FIXED CAPITAL FORMATION

TABLE 04 EMPLOYMENT

TABLE 05 WAGES AND SALARIES

TABLE 14 GROSS OUTPUT

YEAR 6 6 6 7 7 7 7 7 7 7 8 0	YEAR 6 6 6 7 7 7 7 7 7 7 8 8	YEAR 6 6 6 7 7 7 7 7 7 7 8 8
ISIC 3 6 9 0 1 2 3 4 5 6 7 8 9 0 1	ISIC 3 6 9 0 1 2 3 4 5 6 7 8 9 0 1	ISIC 3 6 9 0 1 2 3 4 5 6 7 8 9 0 1
311	311	311
312	312	312
31A	31A	31A
321	321	321
322	322	322
323	323	323
324	324	324
331	331	331
332	332	332
341	341	341
342	342	342
351	351	351
352	352	352
353	353	353
354	354	354
355	355	355
356	356	356
361	361	361
362	362	362
369	369	369
371	371	371
372	372	372
381	381	381
382	382	382
383	383	383
384	384	384
385	385	385
390	390	390

TABLE 20 VALUE ADDED

TABLE 51 PRODUCTION INDEXES

YEAR 6 6 6 7 7 7 7 7 7 7 8 0	YEAR 6 6 6 7 7 7 7 7 7 7 8 8	NUMBER OF ISIC BRANCHES COVERED
ISIC 3 6 9 0 1 2 3 4 5 6 7 8 9 0 1	ISIC 3 6 9 0 1 2 3 4 5 6 7 8 9 0 1	TABLE
		01 04 05 11 14 20 21 51
311	311	2
312	312	2
31A	31A	2
321	321	2
322	322	2
323	323	2
324	324	2
331	331	2
332	332	2
341	341	2
342	342	2
351	351	2
352	352	2
353	353	2
354	354	2
355	355	2
356	356	2
361	361	2
362	362	2
369	369	2
371	371	2
372	372	2
381	381	2
382	382	2
383	383	2
384	384	2
385	385	2
390	390	2

NOTE: TABLE 01=NUMBER OF STATISTICAL UNITS
 TABLE 11=QTY. OF ELECTRICITY CONSUMED
 TABLE 21=GROSS FIXED CAPITAL FORMATION

TABLE 04 EMPLOYMENT

TABLE 05 WAGES AND SALARIES

TABLE 14 GROSS OUTPUT

ISIC	YEAR											ISIC	YEAR											ISIC	YEAR										
	6	6	7	7	7	7	7	7	7	8	8		6	6	7	7	7	7	7	7	8	8	6		6	7	7	7	7	7	7	8	8		
311	311	311			
313	313	313			
314	314	314			
321	321	321			
322	322	322			
323	323	323			
324	324	324			
331	331	331			
332	332	332			
341	341	341			
342	342	342			
351	C	C	351	C	C	351				
352	C	C	352	C	C	352				
353	353	353			
354	354	354			
355	355	355			
356	C	C	356	C	C	356				
361	C	C	361	C	C	361				
362	C	C	362	C	C	362				
369	C	C	369	C	C	369				
371	371	C	C	371				
372	.	.	.	C	C	C	C	C	C	C	C	372	C	C	372				
381	381	381			
382	C	C	C	C	C	C	C	C	C	C	C	382	C	C	C	C	C	C	C	C	C	C	382				
383	383	383			
384	384	384			
385	C	C	C	C	C	C	C	C	C	C	C	385	C	C	C	C	C	C	C	C	C	C	385				
390	390	390			

TABLE 20 VALUE ADDED

TABLE 51 PRODUCTION INDEXES

ISIC	YEAR											ISIC	YEAR											NUMBER OF ISIC BRANCHES COVERED								
	6	6	7	7	7	7	7	7	7	8	8		6	6	7	7	7	7	7	7	8	8	TABLE									
311	311	01	04	05	11	14	20	21	51		
313	313	
314	314	
321	321	
322	322	
323	323	
324	324	
331	331	
332	332	1964	28	28	28	27		27	26	
341	341	1966	28	28	28	27		27	26	
342	342	1969	28	28	28	28		28	26	
351	351	1970	28	28	28	28		28	26	
352	352	1971	28	28	28	28		28	26	
353	353	1972	28	28	26	28		28	26	
354	354	1973	28	28	26	28		28	26	
355	355	1974	28	28	26	28		28	26	
356	356	1975	28	28	26	28		28	27	
361	361	1976	28	28	22	28		28	26	
362	362	1977	28	28	22	28		28	26	
369	369	1978	28	28	22	28		28	26	
371	371	1979	28	28	23	28		28	26	
372	372	1980	28	28	23	28		28	26	
381	381	1981
382	382	C	C	C	C	C	C	C	C	C	C	
383	383
384	384
385	385	C	C	C	C	C	C	C	C	C	C	
390	390

NOTE: TABLE 01=NUMBER OF STATISTICAL UNITS
 TABLE 11=QTY. OF ELECTRICITY CONSUMED
 TABLE 21=GROSS FIXED CAPITAL FORMATION

TABLE 04 EMPLOYMENT

TABLE 05 WAGES AND SALARIES

TABLE 14 GROSS OUTPUT

ISIC	YEAR 6 6 6 7 7 7 7 7 7 7 8 8 3 6 9 0 1 2 3 4 5 6 7 8 9 0 1	ISIC	YEAR 6 6 6 7 7 7 7 7 7 7 7 8 8 3 6 9 0 1 2 3 4 5 6 7 8 9 0 1	ISIC	YEAR 6 6 6 7 7 7 7 7 7 7 8 8 3 6 9 0 1 2 3 4 5 6 7 8 9 0 1
311	*	311	*	311	C C C C C
313	*	313	*	313	C C C C C
314	*	314	*	314	* * * * *
321	*	321	*	321	C C C C C
322	*	322	*	322	C C C C C
323	*	323	*	323	* * * * *
324	*	324	*	324	* * * * *
331	*	331	*	331	* * * * *
332	*	332	*	332	* * * * *
341	*	341	*	341	* * * * *
342	*	342	*	342	* * * * *
351	C	351	C	351	* * * * *
352	C	352	C	352	* * * * *
353	C	353	C	353	C C C C C
354	C	354	C	354	C C C C C
355	*	355	*	355	* * * * *
356	*	356	*	356	* * * * *
361	C	361	C	361	* * * * *
362	C	362	C	362	* * * * *
369	C	369	C	369	* * * * *
371	C	371	C	371	C C C C C
372	C	372	C	372	C C C C C
381	*	381	*	381	* * * * *
382	*	382	*	382	C C C C C
383	*	383	*	383	C C C C C
384	*	384	*	384	* * * * *
385	C	385	C	385	
399	C	399	C	399	

TABLE 20 VALUE ADDED

TABLE 51 PRODUCTION INDEXES

ISIC	YEAR 6 6 6 7 7 7 7 7 7 7 8 8 3 6 9 0 1 2 3 4 5 6 7 8 9 0 1	ISIC	YEAR 6 6 6 7 7 7 7 7 7 7 8 8 3 6 9 0 1 2 3 4 5 6 7 8 9 0 1	NUMBER OF ISIC BRANCHES COVERED							
				TABLE							
				01	04	05	11	14	20	21	51
311	*	311	* * * * *								
313	*	313	* * * * *								
314	*	314	* * * * *								
321	*	321	* * * * *								
322	*	322	* * * * *								
323	*	323	* * * * *								
324	*	324	* * * * *								
331	*	331	* * * * *								
332	*	332	* * * * *								
341	*	341	* * * * *								
342	*	342	* * * * *								
351	C	351	* * * * *								
352	C	352	* * * * *								
353	C	353	* * * * *								
354	C	354	* * * * *								
355	*	355	* * * * *								
356	*	356	* * * * *								
361	C	361	C C C C C C C C C C C C C C C C								
362	C	362	C C C C C C C C C C C C C C C C								
369	C	369	C C C C C C C C C C C C C C C C								
371	C	371	* * * * *								
372	C	372	* * * * *								
381	*	381	* * * * *								
382	*	382	* * * * *								
383	*	383	* * * * *								
384	*	384	* * * * *								
385	C	385	* * * * *								
399	C	399	* * * * *								

NOTE: TABLE 01=NUMBER OF STATISTICAL UNITS
 TABLE 11=QTY. OF ELECTRICITY CONSUMED
 TABLE 21=GROSS FIXED CAPITAL FORMATION

TABLE 04 EMPLOYMENT

TABLE 05 WAGES AND SALARIES

TABLE 14 GROSS OUTPUT

ISIC	YEAR 666777777777788	ISIC	YEAR 666777777777788	ISIC	YEAR 666777777777788
	369012345678901		369012345678901		369012345678901
311	.	311	.	311	.
312	.	312	.	312	.
314	.	314	.	314	.
321	.	321	.	321	.
322	.	322	.	322	.
323	.	323	.	323	.
324	.	324	.	324	.
331	.	331	.	331	.
332	.	332	.	332	.
341	.	341	.	341	.
342	.	342	.	342	.
351	.	351	.	351	.
352	.	352	.	352	.
353	.	353	.	353	.
354	.	354	.	354	.
355	.	355	.	355	.
356	.	356	.	356	.
361	.	361	.	361	.
362	.	362	.	362	.
369	.	369	.	369	.
371	.	371	C	371	C
372	.	372	C	372	C
381	C	381	C	381	C
382	C	382	C	382	C
383	.	383	.	383	.
384	.	384	.	384	.
385	.	385	.	385	.
390	.	390	.	390	.

TABLE 20 VALUE ADDED

TABLE 51 PRODUCTION INDEXES

ISIC	YEAR 666777777777788	ISIC	YEAR 666777777777788	NUMBER OF ISIC BRANCHES COVERED
	369012345678901		369012345678901	TABLE
				01 04 05 11 14 20 21 51
311	.	311	.	
312	.	312	.	
314	.	314	.	
321	.	321	.	
322	.	322	.	
323	.	323	.	
324	.	324	.	
331	.	331	.	
332	.	332	.	
341	.	341	.	
342	.	342	.	
351	.	351	.	
352	.	352	.	
353	.	353	.	
354	.	354	.	
355	.	355	.	
356	.	356	.	
361	.	361	.	
362	.	362	.	
369	.	369	.	
371	C	371	.	
372	C	372	.	
381	C	381	.	
382	C	382	.	
383	.	383	.	
384	.	384	.	
385	.	385	.	
390	.	390	.	

NOTE: TABLE 01=NUMBER OF STATISTICAL UNITS
TABLE 11=QTY. OF ELECTRICITY CONSUMED
TABLE 21=GROSS FIXED CAPITAL FORMATION

TABLE 04 EMPLOYMENT

TABLE 05 WAGES AND SALARIES

TABLE 14 GROSS OUTPUT

YEAR 6 6 6 7 7 7 7 7 7 7 7 8 8		YEAR 6 6 6 7 7 7 7 7 7 7 7 8 8		YEAR 6 6 6 7 7 7 7 7 7 7 8 8	
ISIC	3 6 9 0 1 2 3 4 5 6 7 8 9 0 1	ISIC	3 6 9 0 1 2 3 4 5 6 7 8 9 0 1	ISIC	3 6 9 0 1 2 3 4 5 6 7 8 9 0 1
311	. . .	311	. . .	311	. . .
312	. . .	313	. . .	313	. . .
314	. . .	314	. . .	314	. . .
321	. . .	321	. . .	321	. . .
322	. . .	322	. . .	322	. . .
323	. . .	323	. . .	323	. . .
324	. . .	324	. . .	324	. . .
331	. . .	331	. . .	331	. . .
332	. . .	332	. . .	332	. . .
341	. . .	341	. . .	341	. . .
342	. . .	342	. . .	342	. . .
351	. . .	351	. . .	351	. . .
352	. . .	352	. . .	352	. . .
353	. . .	353	. . .	353	. . .
354	. . .	354	. . .	354	. . .
355	. . .	355	. . .	355	. . .
356	. . .	356	. . .	356	. . .
361	. . .	361	. . .	361	. . .
362	. . .	362	. . .	362	. . .
369	. . .	369	. . .	369	. . .
371	. . .	371	. . .	371	. . .
372	. . .	372	. . .	372	. . .
381	. . .	381	. . .	381	. . .
382	. . .	382	. . .	382	. . .
383	. . .	383	. . .	383	. . .
384	. . .	384	. . .	384	. . .
385	. . .	385	. . .	385	. . .
390	. . .	390	. . .	390	. . .

TABLE 20 VALUE ADDED

TABLE 51 PRODUCTION INDEXES

YEAR 6 6 6 7 7 7 7 7 7 7 8 8		YEAR 6 6 6 7 7 7 7 7 7 7 8 8		NUMBER OF ISIC BRANCHES COVERED							
ISIC	3 6 9 0 1 2 3 4 5 6 7 8 9 0 1	ISIC	3 6 9 0 1 2 3 4 5 6 7 8 9 0 1	TABLE							
				01	04	05	11	14	20	21	51
311	. .	311								
312	. .	313								
314	. .	314								
321	. .	321								
322	. .	322								
323	. .	323								
324	. .	324								
331	. .	331								
332	. .	332								
341	. .	341								
342	. .	342								
351	. .	351								
352	. .	352								
353	. .	353								
354	. .	354								
355	. .	355								
356	. .	356								
361	. .	361								
362	. .	362								
369	. .	369								
371	. .	371								
372	. .	372								
381	. .	381								
382	. .	382								
383	. .	383								
384	. .	384								
385	. .	385								
390	. .	390								

NOTE: TABLE 01=NUMBER OF STATISTICAL UNITS
TABLE 11=QTY. OF ELECTRICITY CONSUMED
TABLE 21=GROSS FIXED CAPITAL FORMATION

TABLE 04 EMPLOYMENT

TABLE 05 WAGES AND SALARIES

TABLE 14 GROSS OUTPUT

YEAR	6	6	7	7	7	7	7	7	7	8	8				
ISIC	3	6	9	0	1	2	3	4	5	6	7	8	9	0	1
311				*	*	*	*	*	*						
312				*	*	*	*	*	*						
314				*	*	*	*	*	*						
321				*	*	*	*	*	*						
322				*	*	*	*	*	*						
323				*	*	*	*	*	*						
324				*	*	*	*	*	*						
331				*	*	*	*	*	*						
332				*	*	*	*	*	*						
341				*	*	*	*	*	*						
342				*	*	*	*	*	*						
351				*	*	*	*	*	*						
352				*	*	*	*	*	*						
353				*	*	*	*	*	*						
354				*	*	*	*	*	*						
355				*	*	*	*	*	*						
356				*	*	*	*	*	*						
361				*	*	*	*	*	*						
362				*	*	*	*	*	*						
369				*	*	*	*	*	*						
371				*	*	*	*	*	*						
372				*	*	*	*	*	*						
381				*	*	*	*	*	*						
382				*	*	*	*	*	*						
383				*	*	*	*	*	*						
384				*	*	*	*	*	*						
385				*	*	*	*	*	*						
390				*	*	*	*	*	*						

TABLE 20 VALUE ADDED

TABLE 51 PRODUCTION INDEXES

YEAR	6	6	7	7	7	7	7	7	7	8	8				
ISIC	3	6	9	0	1	2	3	4	5	6	7	8	9	0	1
311															
312															
314															
321															
322															
323															
324															
331															
332															
341															
342															
351															
352															
353															
354															
355															
356															
361															
362															
369															
371															
372															
381															
382															
383															
384															
385															
390															

NUMBER OF ISIC BRANCHES COVERED

TABLE

01 04 05 11 14 20 21 51

YEAR

1963

1966

1969

1970

1971

1972

1973

1974

1975

1976

1977

1978

1979

1980

1981

1982

1983

1984

1985

1990

NOTE: TABLE 01=NUMBER OF STATISTICAL UNITS
TABLE 11=QTY. OF ELECTRICITY CONSUMED
TABLE 21=GROSS FIXED CAPITAL FORMATION

TABLE 04 EMPLOYMENT

TABLE 05 WAGES AND SALARIES

TABLE 14 GROSS OUTPUT

ISIC	YEAR											ISIC	YEAR											ISIC	YEAR										
	6	6	7	7	7	7	7	7	7	8	8		6	6	7	7	7	7	7	7	7	8	8		6	6	7	7	7	7	7	7	7	8	8
311	C	C	C	C	C	C						311	C	C	C	C	C							311	C	C	C	C							
313	C	C	C	C	C	C						313	C	C	C	C	C								313	C	C	C	C						
314	C	C	C	C	C	C						314	C	C	C	C	C								314	C	C	C	C						
321	C	C	C	C	C	C						321	C	C	C	C	C								321	C	C	C	C						
322	C	C	C	C	C	C						322	C	C	C	C	C								322	C	C	C	C						
323	C	C	C	C	C	C						323	C	C	C	C	C								323	C	C	C	C						
324	C	C	C	C	C	C						324	C	C	C	C	C								324	C	C	C	C						
331	C	C	C	C	C	C						331	C	C	C	C	C								331	C	C	C	C						
332	C	C	C	C	C	C						332	C	C	C	C	C								332	C	C	C	C						
341	C	C	C	C	C	C						341	C	C	C	C	C								341	C	C	C	C						
342	C	C	C	C	C	C						342	C	C	C	C	C								342	C	C	C	C						
351	C	C	C	C	C	C						351	C	C	C	C	C								351	C	C	C	C						
352	C	C	C	C	C	C						352	C	C	C	C	C								352	C	C	C	C						
353	C	C	C	C	C	C						353	C	C	C	C	C								353	C	C	C	C						
354	C	C	C	C	C	C						354	C	C	C	C	C								354	C	C	C	C						
355	C	C	C	C	C	C						355	C	C	C	C	C								355	C	C	C	C						
356	C	C	C	C	C	C						356	C	C	C	C	C								356	C	C	C	C						
361	C	C	C	C	C	C						361	C	C	C	C	C								361	C	C	C	C						
362	C	C	C	C	C	C						362	C	C	C	C	C								362	C	C	C	C						
369	C	C	C	C	C	C						369	C	C	C	C	C								369	C	C	C	C						
371	C	C	C	C	C	C						371	C	C	C	C	C								371	C	C	C	C						
372	C	C	C	C	C	C						372	C	C	C	C	C								372	C	C	C	C						
381	C	C	C	C	C	C						381	C	C	C	C	C								381	C	C	C	C						
382	C	C	C	C	C	C						382	C	C	C	C	C								382	C	C	C	C						
383	C	C	C	C	C	C						383	C	C	C	C	C								383	C	C	C	C						
384	C	C	C	C	C	C						384	C	C	C	C	C								384	C	C	C	C						
385	C	C	C	C	C	C						385	C	C	C	C	C								385	C	C	C	C						
390	C	C	C	C	C	C						390	C	C	C	C	C								390	C	C	C	C						

TABLE 20 VALUE ADDED

TABLE 51 PRODUCTION INDEXES

ISIC	YEAR											ISIC	YEAR											NUMBER OF ISIC BRANCHES COVERED												
	6	6	7	7	7	7	7	7	7	8	8		6	6	7	7	7	7	7	7	7	8	8	01	04	05	11	14	20	21	51					
311	C	C	C	C	C	C						311	C	C	C	C	C																			
313	C	C	C	C	C	C						313	C	C	C	C	C																			
314	C	C	C	C	C	C						314	C	C	C	C	C																			
321	C	C	C	C	C	C						321	C	C	C	C	C																			
322	C	C	C	C	C	C						322	C	C	C	C	C																			
323	C	C	C	C	C	C						323	C	C	C	C	C																			
324	C	C	C	C	C	C						324	C	C	C	C	C																			
331	C	C	C	C	C	C						331	C	C	C	C	C																			
332	C	C	C	C	C	C						332	C	C	C	C	C																			
341	C	C	C	C	C	C						341	C	C	C	C	C																			
342	C	C	C	C	C	C						342	C	C	C	C	C																			
351	C	C	C	C	C	C						351	C	C	C	C	C																			
352	C	C	C	C	C	C						352	C	C	C	C	C																			
353	C	C	C	C	C	C						353	C	C	C	C	C																			
354	C	C	C	C	C	C						354	C	C	C	C	C																			
355	C	C	C	C	C	C						355	C	C	C	C	C																			
356	C	C	C	C	C	C						356	C	C	C	C	C																			
361	C	C	C	C	C	C						361	C	C	C	C	C																			
362	C	C	C	C	C	C						362	C	C	C	C	C																			
369	C	C	C	C	C	C						369	C	C	C	C	C																			
371	C	C	C	C	C	C						371	C	C	C	C	C																			
372	C	C	C	C	C	C						372	C	C	C	C	C																			
381	C	C	C	C	C	C						381	C	C	C	C	C																			
382	C	C	C	C	C	C						382	C	C	C	C	C																			
383	C	C	C	C	C	C						383	C	C	C	C	C																			
384	C	C	C	C	C	C						384	C	C	C	C	C																			
385	C	C	C	C	C	C						385	C	C	C	C	C																			
390	C	C	C	C	C	C						390	C	C	C	C	C																			

NOTE: TABLE 01=NUMBER OF STATISTICAL UNITS
 TABLE 11=QTY. OF ELECTRICITY CONSUMED
 TABLE 21=GROSS FIXED CAPITAL FORMATION

TABLE 04 EMPLOYMENT

TABLE 05 WAGES AND SALARIES

TABLE 14 GROSS OUTPUT

ISIC	YEAR 6 6 6 7 7 7 7 7 7 7 7 8 8 3 6 9 0 1 2 3 4 5 6 7 8 9 0 1	ISIC	YEAR 6 6 6 7 7 7 7 7 7 7 7 8 8 3 6 9 0 1 2 3 4 5 6 7 8 9 0 1	ISIC	YEAR 6 6 6 7 7 7 7 7 7 7 7 8 8 3 6 9 0 1 2 3 4 5 6 7 8 9 0 1
311		311		311	
313		313		313	
314		314		314	
321		321		321	
322		322		322	
323		323		323	
324		324		324	
331		331		331	
332		332		332	
341		341		341	
342		342		342	
351		351		351	
352		352		352	
353		353		353	
354		354		354	
355		355		355	
356		356		356	
361		361		361	
362		362		362	
369		369		369	
371		371		371	
372		372		372	
381		381		381	
382		382		382	
383		383		383	
384		384		384	
385		385		385	
390		390		390	

TABLE 20 VALUE ADDED

TABLE 51 PRODUCTION INDEXES

ISIC	YEAR 6 6 6 7 7 7 7 7 7 7 8 8 3 6 9 0 1 2 3 4 5 6 7 8 9 0 1	ISIC	YEAR 6 6 6 7 7 7 7 7 7 7 8 8 3 6 9 0 1 2 3 4 5 6 7 8 9 0 1	NUMBER OF ISIC BRANCHES COVERED
311		311		
313		313		
314		314		
321		321	C C C C C C C C C C C C	01 04 05 11 14 20 21 51
322		322	C C C C C C C C C C C C	
323		323	C C C C C C C C C C C C	YEAR
324		324	C C C C C C C C C C C C	1963
331		331	C C C C C C C C C C C C	1965
332		332	C C C C C C C C C C C C	1969
341		341		1970
342		342	* * * * *	1971
351		351	C C C C C C C C C C C C	1972
352		352	C C C C C C C C C C C C	1973
353		353		1974
354		354		1975
355		355		1976
356		356		1977
361		361		1978
362		362		1979
369		369		1980
371		371		1981
372		372		
381		381	C C C C C C C C C C C C	
382		382	C C C C C C C C C C C C	
383		383	C C C C C C C C C C C C	
384		384	C C C C C C C C C C C C	
385		385	C C C C C C C C C C C C	
390		390		

NOTE: TABLE 01=NUMBER OF STATISTICAL UNITS
 TABLE 11=QTY. OF ELECTRICITY CONSUMED
 TABLE 21=GROSS FIXED CAPITAL FORMATION

TABLE 04 EMPLOYMENT

TABLE 05 WAGES AND SALARIES

TABLE 14 GROSS OUTPUT

TABLE 04 EMPLOYMENT											TABLE 05 WAGES AND SALARIES											TABLE 14 GROSS OUTPUT										
ISIC	YEAR										ISIC	YEAR										ISIC	YEAR									
	6	6	6	7	7	7	7	7	7	8		8	6	6	6	7	7	7	7	7	7		8	8	6	6	6	7	7	7	7	7
311	*	*	*	*	*	*	*	*	*	*																						
312	C	C	C	C	C	C	C	C	C	C																						
313	C	C	C	C	C	C	C	C	C	C																						
314	C	C	C	C	C	C	C	C	C	C																						
321	C	C	C	C	C	C	C	C	C	C																						
322	C	C	C	C	C	C	C	C	C	C																						
323	C	C	C	C	C	C	C	C	C	C																						
324	C	C	C	C	C	C	C	C	C	C																						
331	C	C	C	C	C	C	C	C	C	C																						
332	C	C	C	C	C	C	C	C	C	C																						
341	*	*	*	*	*	*	*	*	*	*																						
342	C	C	C	C	C	C	C	C	C	C																						
351	C	C	C	C	C	C	C	C	C	C																						
352	C	C	C	C	C	C	C	C	C	C																						
353	*	*	*	*	*	*	*	*	*	*																						
354	*	*	*	*	*	*	*	*	*	*																						
355	*	*	*	*	*	*	*	*	*	*																						
356	C	C	C	C	C	C	C	C	C	C																						
361	C	C	C	C	C	C	C	C	C	C																						
362	C	C	C	C	C	C	C	C	C	C																						
369	C	C	C	C	C	C	C	C	C	C																						
371	C	C	C	C	C	C	C	C	C	C																						
372	C	C	C	C	C	C	C	C	C	C																						
381	C	C	C	C	C	C	C	C	C	C																						
382	C	C	C	C	C	C	C	C	C	C																						
383	C	C	C	C	C	C	C	C	C	C																						
384	*	*	*	*	*	*	*	*	*	*																						
385	*	*	*	*	*	*	*	*	*	*																						
398	C	C	C	C	C	C	C	C	C	C																						

TABLE 20 VALUE ADDED

TABLE 21 PRODUCTION INDEXES

TABLE 20 VALUE ADDED											TABLE 21 PRODUCTION INDEXES											NUMBER OF ISIC BRANCHES COVERED							
ISIC	YEAR										ISIC	YEAR										TABLE							
	6	6	6	7	7	7	7	7	7	8		8	6	6	6	7	7	7	7	7	7	8	8	01	04	05	11	14	20
311	*	*	*	*	*	*	*	*	*	*																			
313	C	C	C	C	C	C	C	C	C	C																			
314	C	C	C	C	C	C	C	C	C	C																			
321	C	C	C	C	C	C	C	C	C	C																			
322	C	C	C	C	C	C	C	C	C	C																			
323	C	C	C	C	C	C	C	C	C	C																			
324	C	C	C	C	C	C	C	C	C	C																			
331	C	C	C	C	C	C	C	C	C	C																			
332	C	C	C	C	C	C	C	C	C	C																			
341	*	*	*	*	*	*	*	*	*	*																			
342	C	C	C	C	C	C	C	C	C	C																			
351	C	C	C	C	C	C	C	C	C	C																			
352	C	C	C	C	C	C	C	C	C	C																			
353	*	*	*	*	*	*	*	*	*	*																			
354	*	*	*	*	*	*	*	*	*	*																			
355	*	*	*	*	*	*	*	*	*	*																			
356	C	C	C	C	C	C	C	C	C	C																			
361	C	C	C	C	C	C	C	C	C	C																			
362	C	C	C	C	C	C	C	C	C	C																			
369	C	C	C	C	C	C	C	C	C	C																			
371	C	C	C	C	C	C	C	C	C	C																			
372	C	C	C	C	C	C	C	C	C	C																			
381	C	C	C	C	C	C	C	C	C	C																			
382	C	C	C	C	C	C	C	C	C	C																			
383	C	C	C	C	C	C	C	C	C	C																			
384	*	*	*	*	*	*	*	*	*	*																			
385	*	*	*	*	*	*	*	*	*	*																			
390	C	C	C	C	C	C	C	C	C	C																			

NOTE: TABLE 01=NUMBER OF STATISTICAL UNITS
 TABLE 11=QTY. OF ELECTRICITY CONSUMED
 TABLE 21=GROSS FIXED CAPITAL FORMATION

TABLE 04 EMPLOYMENT

TABLE 05 WAGES AND SALARIES

TABLE 14 GROSS OUTPUT

ISIC	YEAR											ISIC	YEAR											ISIC	YEAR										
	6	6	6	7	7	7	7	7	7	8	8		6	6	6	7	7	7	7	7	7	8	8		6	6	6	7	7	7	7	7	7	8	8
311	*	*	*	*	*	*	*	*	*	*	*	311	*	*	*	*	*	*	*	*	*	311	*	*	*	*	*	*	*	*	*	*			
313	*	*	*	*	*	*	*	*	*	*	*	313	*	*	*	*	*	*	*	*	*	313	*	*	*	*	*	*	*	*	*	*			
314	*	*	*	*	*	*	*	*	*	*	*	314	*	*	*	*	*	*	*	*	*	314	*	*	*	*	*	*	*	*	*	*			
321	*	*	*	*	*	*	*	*	*	*	*	321	*	*	*	*	*	*	*	*	*	321	*	*	*	*	*	*	*	*	*	*			
322	*	*	*	*	*	*	*	*	*	*	*	322	*	*	*	*	*	*	*	*	*	322	*	*	*	*	*	*	*	*	*	*			
323	*	*	*	*	*	*	*	*	*	*	*	323	*	*	*	*	*	*	*	*	*	323	*	*	*	*	*	*	*	*	*	*			
324	*	*	*	*	*	*	*	*	*	*	*	324	*	*	*	*	*	*	*	*	*	324	*	*	*	*	*	*	*	*	*	*			
331	*	*	*	*	*	*	*	*	*	*	*	331	*	*	*	*	*	*	*	*	*	331	*	*	*	*	*	*	*	*	*	*			
332	*	*	*	*	*	*	*	*	*	*	*	332	*	*	*	*	*	*	*	*	*	332	*	*	*	*	*	*	*	*	*	*			
341	*	*	*	*	*	*	*	*	*	*	*	341	*	*	*	*	*	*	*	*	*	341	*	*	*	*	*	*	*	*	*	*			
342	*	*	*	*	*	*	*	*	*	*	*	342	*	*	*	*	*	*	*	*	*	342	*	*	*	*	*	*	*	*	*	*			
351	*	*	*	*	*	*	*	*	*	*	*	351	*	*	*	*	*	*	*	*	*	351	*	*	*	*	*	*	*	*	*	*			
352	*	*	*	*	*	*	*	*	*	*	*	352	*	*	*	*	*	*	*	*	*	352	*	*	*	*	*	*	*	*	*	*			
353	*	*	*	*	*	*	*	*	*	*	*	353	*	*	*	*	*	*	*	*	*	353	*	*	*	*	*	*	*	*	*	*			
354	*	*	*	*	*	*	*	*	*	*	*	354	*	*	*	*	*	*	*	*	*	354	*	*	*	*	*	*	*	*	*	*			
355	*	*	*	*	*	*	*	*	*	*	*	355	*	*	*	*	*	*	*	*	*	355	*	*	*	*	*	*	*	*	*	*			
356	*	*	*	*	*	*	*	*	*	*	*	356	*	*	*	*	*	*	*	*	*	356	*	*	*	*	*	*	*	*	*	*			
361	*	*	*	*	*	*	*	*	*	*	*	361	*	*	*	*	*	*	*	*	*	361	*	*	*	*	*	*	*	*	*	*			
362	*	*	*	*	*	*	*	*	*	*	*	362	*	*	*	*	*	*	*	*	*	362	*	*	*	*	*	*	*	*	*	*			
369	*	*	*	*	*	*	*	*	*	*	*	369	*	*	*	*	*	*	*	*	*	369	*	*	*	*	*	*	*	*	*	*			
371	*	*	*	*	*	*	*	*	*	*	*	371	*	*	*	*	*	*	*	*	*	371	*	*	*	*	*	*	*	*	*	*			
372	*	*	*	*	*	*	*	*	*	*	*	372	*	*	*	*	*	*	*	*	*	372	*	*	*	*	*	*	*	*	*	*			
381	*	*	*	*	*	*	*	*	*	*	*	381	*	*	*	*	*	*	*	*	*	381	*	*	*	*	*	*	*	*	*	*			
382	*	*	*	*	*	*	*	*	*	*	*	382	*	*	*	*	*	*	*	*	*	382	*	*	*	*	*	*	*	*	*	*			
383	*	*	*	*	*	*	*	*	*	*	*	383	*	*	*	*	*	*	*	*	*	383	*	*	*	*	*	*	*	*	*	*			
384	*	*	*	*	*	*	*	*	*	*	*	384	*	*	*	*	*	*	*	*	*	384	*	*	*	*	*	*	*	*	*	*			
385	*	*	*	*	*	*	*	*	*	*	*	385	*	*	*	*	*	*	*	*	*	385	*	*	*	*	*	*	*	*	*	*			
390	*	*	*	*	*	*	*	*	*	*	*	390	*	*	*	*	*	*	*	*	*	390	*	*	*	*	*	*	*	*	*	*			

TABLE 20 VALUE ADDED

TABLE 51 PRODUCTION INDEXES

ISIC	YEAR											ISIC	YEAR											NUMBER OF ISIC BRANCHES COVERED															
	6	6	6	7	7	7	7	7	7	8	8		6	6	6	7	7	7	7	7	7	8	8	TABLE															
																						YEAR																	
																						01	04	05	11	14	20	21	51										
311	*	*	*	*	*	*	*	*	*	*	*	311	*	*	*	*	*	*	*	*	*	1963	2A	2A	2B	2B	2A	2A	2A	2A	27								
313	*	*	*	*	*	*	*	*	*	*	*	313	*	*	*	*	*	*	*	*	*	1969									24								
314	*	*	*	*	*	*	*	*	*	*	*	314	*	*	*	*	*	*	*	*	*	1969									27								
321	*	*	*	*	*	*	*	*	*	*	*	321	*	*	*	*	*	*	*	*	*	1970									28								
322	*	*	*	*	*	*	*	*	*	*	*	322	*	*	*	*	*	*	*	*	*	1971			2B		2A	2A		2A									
323	*	*	*	*	*	*	*	*	*	*	*	323	*	*	*	*	*	*	*	*	*	1972			2A		2A	2A		2A									
324	*	*	*	*	*	*	*	*	*	*	*	324	*	*	*	*	*	*	*	*	*	1973			2B		2A	2A		2A									
331	*	*	*	*	*	*	*	*	*	*	*	331	*	*	*	*	*	*	*	*	*	1974			2B		2A	2A		2A									
332	*	*	*	*	*	*	*	*	*	*	*	332	*	*	*	*	*	*	*	*	*	1975	2A	2A	2A		2B	2B	2B	2B	28								
341	*	*	*	*	*	*	*	*	*	*	*	341	*	*	*	*	*	*	*	*	*	1976			2A		2A	2A		2A	8								
342	*	*	*	*	*	*	*	*	*	*	*	342	*	*	*	*	*	*	*	*	*	1977			2A		2A	2A		2A									
351	*	*	*	*	*	*	*	*	*	*	*	351	*	*	*	*	*	*	*	*	*	1978			2A		2A	2A		2A									
352	*	*	*	*	*	*	*	*	*	*	*	352	*	*	*	*	*	*	*	*	*	1979			2A		2A	2A		2A									
353	*	*	*	*	*	*	*	*	*	*	*	353	*	*	*	*	*	*	*	*	*	1980			2A		2A	2A		2A									
354	*	*	*	*	*	*	*	*	*	*	*	354	*	*	*	*	*	*	*	*	*	1981			2A		2A	2A		2A									
355	*	*	*	*	*	*	*	*	*	*	*	355	*	*	*	*	*	*	*	*	*																		
356	*	*	*	*	*	*	*	*	*	*	*	356	*	*	*	*	*	*	*	*	*																		
361	*	*	*	*	*	*	*	*	*	*	*	361	*	*	*	*	*	*	*	*	*																		
362	*	*	*	*	*	*	*	*	*	*	*	362	*	*	*	*	*	*	*	*	*																		
369	*	*	*	*	*	*	*	*	*	*	*	369	*	*	*	*	*	*	*	*	*																		
371	*	*	*	*	*	*	*	*	*	*	*	371	*	*	*	*	*	*	*	*	*																		
372	*	*	*	*	*	*	*	*	*	*	*	372	*	*	*	*	*	*	*	*	*																		
381	*	*	*	*	*	*	*	*	*	*	*	381	*	*	*	*	*	*	*	*	*																		
382	*	*	*	*	*	*	*	*	*	*	*	382	*	*	*	*	*	*	*	*	*																		
383	*	*	*	*	*	*	*	*	*	*	*	383	*	*	*	*	*	*	*	*	*																		
384	*	*	*	*	*	*	*	*	*	*	*	384	*	*	*	*	*	*	*	*	*																		
385	*	*	*	*	*	*	*	*	*	*	*	385	*	*	*	*	*	*	*	*	*																		
390	*	*	*	*	*	*	*	*	*	*	*	390	*	*	*	*	*	*	*	*	*																		

NOTE: TABLE 01=NUMBER OF STATISTICAL UNITS
 TABLE 11=QTY. OF ELECTRICITY CONSUMED
 TABLE 21=GROSS FIXED CAPITAL FORMATION

TABLE 04 EMPLOYMENT

TABLE 05 WAGES AND SALARIES

TABLE 14 GROSS OUTPUT

YEAR 6 6 6 7 7 7 7 7 7 7 7 8 8 ISIC 3 6 9 0 1 2 3 4 5 6 7 8 9 0 1		YEAR 6 6 6 7 7 7 7 7 7 7 7 8 8 ISIC 3 6 9 0 1 2 3 4 5 6 7 8 9 0 1		YEAR 6 6 6 7 7 7 7 7 7 7 7 8 8 ISIC 3 6 9 0 1 2 3 4 5 6 7 8 9 0 1	
311	C C C	311	C C C	311	• • • • •
312	C C C	312	C C C	312	C C C C C C
314	C C C	314	C C C	314	C C C C C C
321	• • •	321	• • •	321	• • • • •
322	• • •	322	• • •	322	• • • • •
323	C C C	323	C C C	323	C C C C C C
324	C C C	324	C C C	324	C C C C C C
331	C C C	331	C C C	331	C C C C C C
332	C C C	332	C C C	332	C C C C C C
341	• • •	341	• • •	341	• • • • •
342	• • •	342	• • •	342	• • • • •
351	C C C	351	C C C	351	C C C C C C
352	C C C	352	C C C	352	C C C C C C
353	C C C	353	C C C	353	C C C C C C
354	C C C	354	C C C	354	C C C C C C
355	C C C	355	C C C	355	C C C C C C
356	C C C	356	C C C	356	C C C C C C
361	• • •	361	• • •	361	• • • • •
362	• • •	362	• • •	362	• • • • •
369	C C C	369	C C C	369	C C C C C C
371	• • •	371	• • •	371	C C C C C C
372	• • •	372	• • •	372	C C C C C C
381	C C C	381	C C C	381	C C C C C C
382	C C C	382	C C C	382	C C C C C C
383	C C C	383	C C C	383	• • • • •
384	C C C	384	C C C	384	C C C C C C
385	C C C	385	C C C	385	C C C C C C
390	• • •	390	• • •	390	• • • • •

TABLE 20 VALUE ADDED

TABLE 51 PRODUCTION INDEXES

YEAR 6 6 6 7 7 7 7 7 7 7 8 8 ISIC 3 6 9 0 1 2 3 4 5 6 7 8 9 0 1		YEAR 6 6 6 7 7 7 7 7 7 7 8 8 ISIC 3 6 9 0 1 2 3 4 5 6 7 8 9 0 1		NUMBER OF ISIC BRANCHES COVERED TABLE 01 04 05 11 14 20 21 51				
311	C C C	311	• • •					
312	C C C	312	• • •					
314	C C C	314	• • •					
321	• • •	321	• • •					
322	• • •	322	• • •					
323	• • •	323	• • •					
324	C C C	324	• • •					
331	C C C	331	• • •	YEAR				
332	C C C	332	• • •	1963 19				
341	• • •	341	• • •	1965 19				
342	• • •	342	• • •	1969 19				
351	C C C	351	• • •	1970 24				
352	C C C	352	• • •	1971 21				
353	C C C	353	• • •	1972 21				
354	C C C	354	• • •	1973 21				
355	C C C	355	• • •	1974 21				
356	C C C	356	• • •	1975 27 24 24				
361	• • •	361	• • •	1976 27 24 24				
362	• • •	362	• • •	1977 27 24 24				
369	C C C	369	• • •	1978 25 27 24 24				
371	• • •	371	• • •	1979 25 27 24 24				
372	• • •	372	• • •	1980 25 27 24 24				
381	C C C	381	C C C	1981 5				
382	C C C	382	C C C					
383	C C C	383	C C C					
384	C C C	384	C C C	NOTE: TABLE 01=NUMBER OF STATISTICAL UNITS				
385	C C C	385	C C C	TABLE 11=QTY. OF ELECTRICITY CONSUMED				
390	• • •	390	• • •	TABLE 21=GROSS FIXED CAPITAL FORMATION				

TABLE 04 EMPLOYMENT

TABLE 05 WAGES AND SALARIES

TABLE 14 GROSS OUTPUT

YEAR	6	6	7	7	7	7	7	7	7	8	8				
ISIC	3	6	9	0	1	2	3	4	5	6	7	8	9	0	1
311															
313															
314															
321															
322															
323															
324															
331															
332															
341															
342															
351															
352															
353															
354															
355															
356															
361															
362															
369															
371															
372															
381															
382															
383															
384															
385															
396															

TABLE 20 VALUE ADDED

TABLE 51 PRODUCTION INDEXES

YEAR	6	6	7	7	7	7	7	7	7	8	8				
ISIC	3	6	9	0	1	2	3	4	5	6	7	8	9	0	1
311															
313															
314															
321															
322															
323															
324															
331															
332															
341															
342															
351															
352															
353															
356															
355															
356															
361															
362															
369															
371															
372															
381															
382															
383															
384															
385															
398															

NUMBER OF ISIC BRANCHES COVERED

TABLE

01 04 05 11 14 20 21 51

NOTE: TABLE 01=NUMBER OF STATISTICAL UNITS
 TABLE 11=QTY. OF ELECTRICITY CONSUMED
 TABLE 21=GROSS FIXED CAPITAL FORMATION

TABLE 04 EMPLOYMENT

TABLE 05 WAGES AND SALARIES

TABLE 14 GROSS OUTPUT

ISIC	YEAR											ISIC	YEAR											ISIC	YEAR										
	6	6	7	7	7	7	7	7	7	8	8		6	6	7	7	7	7	7	7	7	8	8		6	6	7	7	7	7	7	7	7	8	8
311	311	311		
312	312	312		
313	313	313		
314	314	314		
321	321	321		
322	322	322		
323	323	323		
324	324	324		
331	331	331		
332	332	332		
341	341	341		
342	342	342		
351	C	C	351	C	C	351	C	C			
352	C	C	352	C	C	352	C	C			
353	353	353	C	.	.	C	C	C	C	C	C		
354	354	354	C	.	.	C	C	C	C	C	C		
355	355	355		
356	356	356		
361	361	361		
362	362	362		
369	C	369	C	369	C		
371	371	371		
372	372	372		
381	381	381		
382	382	382		
383	383	383		
384	384	384		
385	385	385		
390	390	390		

TABLE 20 VALUE ADDED

TABLE 51 PRODUCTION INDEXES

ISIC	YEAR											ISIC	YEAR											NUMBER OF ISIC BRANCHES COVERED													
	6	6	7	7	7	7	7	7	7	8	8		6	6	7	7	7	7	7	7	7	8	8	TABLE													
	3	6	9	0	1	2	3	4	5	6	7	8	9	0	1	3	6	9	0	1	2	3	4	5	6	7	8	9	0	1							
311	311															
312	312															
313	313															
314	314															
321	321															
322	322															
323	323															
324	324															
331	331															
332	332															
341	341															
342	342															
351	C	C	351	C	C															
352	C	C	352	C	C															
353	353															
354	354															
355	355															
356	356															
361	361															
362	362															
367	C	367	C															
371	371															
372	372															
381	381															
382	382															
383	383															
384	384															
385	385															
390	390															

NOTE: TABLE 01=NUMBER OF STATISTICAL UNITS
 TABLE 11=QTY. OF ELECTRICITY CONSUMED
 TABLE 21=GROSS FIXED CAPITAL FORMATION

TABLE 04 EMPLOYMENT

TABLE 05 WAGES AND SALARIES

TABLE 14 GROSS OUTPUT

YEAR	6	6	7	7	7	7	7	7	7	8	8				
ISIC	3	6	9	0	1	2	3	4	5	6	7	8	9	0	1
311															
313															
314															
321															
322															
323															
324															
331															
332															
341															
342															
351															
352															
353															
354															
355															
356															
361															
362															
369															
371															
372															
381															
382															
383															
384															
385															
390															

TABLE 20 VALUE ADDED

TABLE 51 PRODUCTION INDEXES

YEAR	6	6	7	7	7	7	7	7	7	8	8				
ISIC	3	6	9	0	1	2	3	4	5	6	7	8	9	0	1
311															
313															
314															
321															
322															
323															
324															
331															
332															
341															
342															
351															
352															
353															
354															
355															
356															
361															
362															
369															
371															
372															
381															
382															
383															
384															
385															
390															

NUMBER OF ISIC BRANCHES COVERED

TABLE

01	04	05	11	14	20	21	51
----	----	----	----	----	----	----	----

ISIC	YEAR	1963	1966	1969	1970	1971	1972	1973	1974	1975	1976	1977	1978	1979	1980	1981
311																
313																
314																
321																
322																
323																
324																
331																
332																
341																
342																
351																
352																
353																
354																
355																
356																
361																
362																
369																
371																
372																
381																
382																
383																
384																
385																
390																

NOTE: TABLE 04-NUMBER OF STATISTICAL UNITS
 TABLE 11-QUANTITY OF ELECTRICITY CONSUMED
 TABLE 21-GROSS FIXED CAPITAL FORMATION

TABLE 04 EMPLOYMENT

TABLE 05 WAGES AND SALARIES

TABLE 14 GROSS OUTPUT

ISIC	YEAR 6 6 6 7 7 7 7 7 7 7 8 8 3 6 9 0 1 2 3 4 5 6 7 8 9 0 1	ISIC	YEAR 6 6 6 7 7 7 7 7 7 7 8 8 3 6 9 0 1 2 3 4 5 6 7 8 9 0 1	ISIC	YEAR 6 6 6 7 7 7 7 7 7 7 8 8 3 6 9 0 1 2 3 4 5 6 7 8 9 0 1
311	..	311	..	311	..
313	..	313	..	313	..
314	..	314	..	314	..
321	..	321	..	321	..
322	..	322	..	322	..C
323	..	323	..	323	..
324	..	324	..	324	..C
331	..	331	..	331	..
332	..	332	..	332	..
341	..	341	..	341	..
342	..	342	..	342	..
351	..	351	..	351	..C
352	..	352	..	352	..C
353	..C	353	..C	353	..C
354	..C	354	..C	354	..C
355	..	355	..	355	..
356	..C C	356	..C C	356	..C C C
361	..	361	..	361	..
362	..	362	..	362	..C
369	..	369	..	369	..C
371	..	371	..	371	..
372	..	372	..	372	..
381	..	381	..	381	..
382	..	382	..	382	..
383	..	383	..	383	..
384	..	384	..	384	..
385	..C C	385	..C C	385	..C C C
390	..C C	390	..C C	390	..C C C

TABLE 20 VALUE ADDED

TABLE 51 PRODUCTION INDEXES

ISIC	YEAR 6 6 6 7 7 7 7 7 7 7 8 8 3 6 9 0 1 2 3 4 5 6 7 8 9 0 1	ISIC	YEAR 6 6 6 7 7 7 7 7 7 7 8 8 3 6 9 0 1 2 3 4 5 6 7 8 9 0 1
311	..	311	..
313	..	313	..
314	..	314	..
321	..	321	..
322	..	322	..
323	..	323	..
324	..C	324	..
331	..	331	..
332	..	332	..
341	..	341	..
342	..	342	..
351	..	351	..
352	..	352	..
353	..C	353	..
354	..C	354	..
355	..	355	..
356	..C C C	356	..
361	..	361	..
362	..C	362	..
369	..	369	..
371	..	371	..
372	..	372	..
381	..	381	..
382	..	382	..
383	..	383	..
384	..	384	..
385	..C C C	385	..
390	..C C C	390	..

NUMBER OF ISIC BRANCHES COVERED

TABLE

01 04 05 11 14 20 21 51

YEAR	01	04	05	11	14	20	21	51
1963	2A	2B	2A		2A	2A	2A	27
1966	2A	2A	2A		27	2A	2B	23
1969						2A	2A	27
1970	2A	2A	2A		2A	2A		28
1971	2A	2A	2A		2A	2A		27
1972	2A	2A	2A		2A	2A		27
1973	2A	2A	2A		2A	2A		27
1974	2A	2A	2A		2A	2A		27
1975	2A	2A	2A		2A	2A		2A
1976	2A	2A	2A		2A	2A		9
1977	2A	2B	2A		2A	2A		7
1978								7
1979								7
1980								7
1981								

NOTE: TABLE 01=NUMBER OF STATISTICAL UNITS
 TABLE 11=QTY. OF ELECTRICITY CONSUMED
 TABLE 21=GROSS FIXED CAPITAL FORMATION

TABLE 04 EMPLOYMENT												TABLE 05 WAGES AND SALARIES												TABLE 14 GROSS OUTPUT											
ISIC	6	6	7	7	7	7	7	7	7	8	8	ISIC	6	6	7	7	7	7	7	7	8	8	ISIC	6	6	7	7	7	7	7	7	8	8		
YEAR	3	6	9	0	1	2	3	4	5	6	7	YEAR	3	6	9	0	1	2	3	4	5	6	7	YEAR	3	6	9	0	1	2	3	4	5	6	7
311																								
313																								
314																								
321																								
322																								
323																								
324																								
331																								
332																								
341																								
342																								
351																								
352																								
353	.	C																								
354	.	C																								
355																								
356																								
361	.	C																								
362	.	C																								
369																								
371																								
372																								
381																								
382																								
383																								
384																								
385																								
390																								

TABLE 20 VALUE ADDED												TABLE 51 PRODUCTION INDEXES												NUMBER OF ISIC BRANCHES COVERED								
ISIC	6	6	7	7	7	7	7	7	8	8	ISIC	6	6	7	7	7	7	7	8	8	TABLE											
YEAR	3	6	9	0	1	2	3	4	5	6	YEAR	3	6	9	0	1	2	3	4	5	6	01	04	05	11	14	20	21	51			
311																						
313																						
314																						
321																						
322																						
323																						
324																						
331																						
332																						
341																						
342																						
351																						
352																						
353	.	C																						
354	.	C																						
355																						
356																						
361	.	C																						
362	.	C																						
369	.	C																						
371																						
372																						
381																						
382																						
383																						
384																						
385	.	C																						
390	.	C																						

NOTE: TABLE 01=NUMBER OF STATISTICAL UNITS
 TABLE 11=QTY. OF ELECTRICITY CONSUMED
 TABLE 21=GROSS FIXED CAPITAL FORMATION

TABLE 04 EMPLOYMENT

TABLE 05 WAGES AND SALARIES

TABLE 14 GROSS OUTPUT

YEAR	6	6	7	7	7	7	7	7	7	8	8				
ISIC	3	6	9	0	1	2	3	4	5	6	7	8	9	0	1
311															
313															
314															
321															
322															
323															
324															
331															
332															
341															
342															
351															
352															
353															
354															
355															
356															
361															
362															
369															
371															
372															
381															
382															
383															
384															
385															
390															

TABLE 20 VALUE ADDED

TABLE 51 PRODUCTION INDEXES

YEAR	6	6	7	7	7	7	7	7	8	8					
ISIC	3	6	9	0	1	2	3	4	5	6	7	8	9	0	1
311															
313															
314															
321															
322															
323															
324															
331															
332															
341															
342															
351															
352															
353															
354															
355															
356															
361															
362															
369															
371															
372															
381															
382															
383															
384															
385															
390															

NUMBER OF ISIC BRANCHES COVERED

TABLE	01	04	05	11	14	20	21	51
311								
313								
314								
321								
322								
323								
324								
331								
332								
341								
342								
351								
352								
353								
354								
355								
356								
361								
362								
369								
371								
372								
381								
382								
383								
384								
385								
390								

NOTE: TABLE 01=NUMBER OF STATISTICAL UNITS
 TABLE 11=QTY. OF ELECTRICITY CONSUMED
 TABLE 21=GROSS FIXED CAPITAL FORMATION

TABLE 04 EMPLOYMENT

TABLE 05 WAGES AND SALARIES

TABLE 14 GROSS OUTPUT

YEAR	6	6	7	7	7	7	7	7	7	8	8				
ISIC	3	6	9	0	1	2	3	4	5	6	7	8	9	0	1
311
313
314
321
322
323
324
331
332
341
342
351
352
353
354
355
356
361
362
369
371
372
381
382
383
384
385
390

TABLE 20 VALUE ADDED

TABLE 51 PRODUCTION INDEXES

YEAR	6	6	7	7	7	7	7	7	7	8	8				
ISIC	3	6	9	0	1	2	3	4	5	6	7	8	9	0	1
311
313
314
321
322
323
324
331
332
341
342
351
352
353
354
355
356
361
362
369
371
372
381
382
383
384
385
390

ISIC	YEAR	NUMBER OF ISIC BRANCHES COVERED													
		01	04	05	11	14	20	21	51						
311	1963	5
313	1969	5
314	1969	5
321	1970	6
322	1971	5
323	1972	5
324	1973	5
331	1974	5
332	1975	11
341	1976	5
342	1977	5
351	1978	5
352	1979	5
353	1980	5
354	1981	4

ISIC	YEAR	01	04	05	11	14	20	21	51
311	1963
313	1969
314	1969
321	1970
322	1971
323	1972
324	1973
331	1974
332	1975
341	1976
342	1977
351	1978
352	1979
353	1980
354	1981

NOTE: TABLE 01=NUMBER OF STATISTICAL UNITS
TABLE 11=QTY. OF ELECTRICITY CONSUMED
TABLE 21=GROSS FIXED CAPITAL FORMATION

TABLE 04 EMPLOYMENT

TABLE 05 WAGES AND SALARIES

TABLE 14 GROSS OUTPUT

YEAR	6	6	7	7	7	7	7	7	7	8	8				
ISIC	3	6	9	0	1	2	3	4	5	6	7	8	9	0	1
311
313
314
321
322	C	C	C	C	C	C	C	C	C	C	C
323
324	C	C	C	C	C	C	C	C	C	C	C	C	C	C	C
331
332
341
342
351	C	C	C	C	C	C	C	C	C	C	C	C	C	C	C
352	C	C	C	C	C	C	C	C	C	C	C	C	C	C	C
353
354
355
356
361
362
369
371
372
381
382	C	C	C	C	C	C	C	C	C	C	C	C	C	C	C
383	C	C	C	C	C	C	C	C	C	C	C	C	C	C	C
384
385
390	C	C	C

TABLE 20 VALUE ADDED

TABLE 51 PRODUCTION INDEXES

NUMBER OF ISIC BRANCHES COVERED

YEAR	6	6	7	7	7	7	7	7	7	8	8				
ISIC	3	6	9	0	1	2	3	4	5	6	7	8	9	0	1
311
313
314
321
322
323
324
331
332
341
342
351	C	C	C	C	C	C	C	C	C	C	C	C	C	C	C
352	C	C	C	C	C	C	C	C	C	C	C	C	C	C	C
353
354
355
356
361
362
369
371
372
381	C	C	C	C	C	C	C	C	C	C	C	C	C	C	C
382	C	C	C	C	C	C	C	C	C	C	C	C	C	C	C
383	C	C	C	C	C	C	C	C	C	C	C	C	C	C	C
384	C	C	C	C	C	C	C	C	C	C	C	C	C	C	C
385
390	C	C	C	C	C	C	C	C	C	C	C	C	C	C	C

YEAR	TABLE							
	01	04	05	11	14	20	21	51
1963								27
1966								24
1969	28	28	28					24
1970	28	28	28					28
1971	28	28	28			24		24
1972	28	28	28			24		24
1973	28	28	28			24		24
1974	28	28	28			24		24
1975	28	28	28			24		24
1976	28	28	28			24		13
1977	28	28	28			24		13
1978	28	28	28			24		11
1979	28	28	28			24		11
1981	28	28	28			24		11
1981								6

NOTE: TABLE 01=NUMBER OF STATISTICAL UNITS
 TABLE 11=QTY. OF ELECTRICITY CONSUMED
 TABLE 21=GROSS FIXED CAPITAL FORMATION

TABLE 04 EMPLOYMENT

TABLE 05 WAGES AND SALARIES

TABLE 14 GROSS OUTPUT

ISIC	YEAR										ISIC	YEAR										ISIC	YEAR																						
	6	6	7	7	7	7	7	7	8	8		6	6	7	7	7	7	7	7	8	8		6	6	7	7	7	7	7	7	8	8													
	3	6	9	0	1	2	3	4	5	6	7	8	9	0	1	3	6	9	0	1	2	3	4	5	6	7	8	9	0	1	3	6	9	0	1	2	3	4	5	6	7	8	9	0	1
311	*	*	*	*	*	*	*	*	*	*	*	*	*	*	*																														
313	*	*	*	*	*	*	*	*	*	*	*	*	*	*	*																														
314	*	*	*	*	*	*	*	*	*	*	*	*	*	*	*																														
321	*	*	*	*	*	*	*	*	*	*	*	*	*	*	*																														
322	*	*	*	*	*	*	*	*	*	*	*	*	*	*	*																														
323	*	*	*	*	*	*	*	*	*	*	*	*	*	*	*																														
324	*	*	*	*	*	*	*	*	*	*	*	*	*	*	*																														
331	*	*	*	*	*	*	*	*	*	*	*	*	*	*	*																														
332	*	*	*	*	*	*	*	*	*	*	*	*	*	*	*																														
341	*	*	*	*	*	*	*	*	*	*	*	*	*	*	*																														
342	*	*	*	*	*	*	*	*	*	*	*	*	*	*	*																														
351	*	*	*	*	*	*	*	*	*	*	*	*	*	*	*																														
352	*	*	*	*	*	*	*	*	*	*	*	*	*	*	*																														
353	*	C	C	*	*	*	*	*	*	*	*	*	*	*	*																														
354	*	*	*	*	*	*	*	*	*	*	*	*	*	*	*																														
355	*	*	*	*	*	*	*	*	*	*	*	*	*	*	*																														
356	*	*	*	*	*	*	*	*	*	*	*	*	*	*	*																														
361	C	C	C	*	C	C	C	C	C	C	C	C	C	C	C																														
362	*	*	*	*	*	*	*	*	*	*	*	*	*	*	*																														
369	C	C	C	C	C	C	C	C	C	C	C	C	C	C	C																														
371	*	*	*	*	*	*	*	*	*	*	*	*	*	*	*																														
372	*	C	C	C	C	C	C	C	C	C	C	C	C	C	C																														
381	*	*	C	C	C	C	C	C	C	C	C	C	C	C	C																														
382	*	*	*	*	*	*	*	*	*	*	*	*	*	*	*																														
383	*	*	*	*	*	*	*	*	*	*	*	*	*	*	*																														
384	*	*	*	*	*	*	*	*	*	*	*	*	*	*	*																														
385	*	*	*	*	*	*	*	*	*	*	*	*	*	*	*																														
390	*	*	*	*	*	*	*	*	*	*	*	*	*	*	*																														

TABLE 20 VALUE ADDED

TABLE 51 PRODUCTION INDEXES

ISIC	YEAR										ISIC	YEAR										NUMBER OF ISIC BRANCHES COVERED																											
	6	6	7	7	7	7	7	7	8	8		6	6	7	7	7	7	7	8	8	TABLE																												
	3	6	9	0	1	2	3	4	5	6	7	8	9	0	1	3	6	9	0	1	2	3	4	5	6	7	8	9	0	1	01	04	05	11	14	20	21	51											
311	*	*	*	*	*	*	*	*	*	*	*	*	*	*	*																																		
313	*	*	*	*	*	*	*	*	*	*	*	*	*	*	*																																		
314	*	*	*	*	*	*	*	*	*	*	*	*	*	*	*																																		
321	*	*	*	*	*	*	*	*	*	*	*	*	*	*	*																																		
322	*	*	*	*	*	*	*	*	*	*	*	*	*	*	*																																		
323	*	*	*	*	*	*	*	*	*	*	*	*	*	*	*																																		
324	*	*	*	*	*	*	*	*	*	*	*	*	*	*	*																																		
331	*	*	*	*	*	*	*	*	*	*	*	*	*	*	*																																		
332	*	*	*	*	*	*	*	*	*	*	*	*	*	*	*																																		
341	*	*	*	*	*	*	*	*	*	*	*	*	*	*	*																																		
342	*	*	*	*	*	*	*	*	*	*	*	*	*	*	*																																		
351	*	*	*	*	*	*	*	*	*	*	*	*	*	*	*																																		
352	*	*	*	*	*	*	*	*	*	*	*	*	*	*	*																																		
353	*	C	C	*	*	*	*	*	*	*	*	*	*	*	*																																		
354	*	*	*	*	*	*	*	*	*	*	*	*	*	*	*																																		
355	*	*	*	*	*	*	*	*	*	*	*	*	*	*	*																																		
356	*	*	*	*	*	*	*	*	*	*	*	*	*	*	*																																		
361	C	C	C	C	C	C	C	C	C	C	C	C	C	C	C																																		
362	*	*	*	*	*	*	*	*	*	*	*	*	*	*	*																																		
369	C	C	C	C	C	C	C	C	C	C	C	C	C	C	C																																		
371	*	*	*	*	*	*	*	*	*	*	*	*	*	*	*																																		
372	*	C	C	C	C	C	C	C	C	C	C	C	C	C	C																																		
381	*	*	C	C	C	C	C	C	C	C	C	C	C	C	C																																		
382	*	*	*	*	*	*	*	*	*	*	*	*	*	*	*																																		
383	*	*	*	*	*	*	*	*	*	*	*	*	*	*	*																																		
384	*	*	*	*	*	*	*	*	*	*	*	*	*	*	*																																		
385	*	*	*	*	*	*	*	*	*	*	*	*	*	*	*																																		
390	*	*	*	*	*	*	*	*	*	*	*	*	*	*	*																																		

NOTE: TABLE 01=NUMBER OF STATISTICAL UNITS
TABLE 11=QTY. OF ELECTRICITY CONSUMED
TABLE 21=GROSS FIXED CAPITAL FORMATION

TABLE 04 EMPLOYMENT

TABLE 05 WAGES AND SALARIES

TABLE 14 GROSS OUTPUT

YEAR		ISIC		YEAR		ISIC		YEAR		ISIC	
6	7	8	9	0	1	6	7	8	9	0	1
311	*	*	*	*	*	311	*	*	*	*	*
313	*	*	*	*	*	313	*	*	*	*	*
314	*	*	*	*	*	314	*	*	*	*	*
321	*	*	*	*	*	321	*	*	*	*	*
322	*	*	*	*	*	322	*	*	*	*	*
323	*	*	*	*	*	323	*	*	*	*	*
324	*	*	*	*	*	324	*	*	*	*	*
331	*	*	*	*	*	331	*	*	*	*	*
332	*	*	*	*	*	332	*	*	*	*	*
341	*	*	*	*	*	341	*	*	*	*	*
342	*	*	*	*	*	342	*	*	*	*	*
351	*	*	*	*	*	351	*	*	*	*	*
352	*	*	*	*	*	352	*	*	*	*	*
353	*	*	*	*	*	353	*	*	*	*	*
354	*	*	*	*	*	354	*	*	*	*	*
355	*	*	*	*	*	355	*	*	*	*	*
356	*	*	*	*	*	356	*	*	*	*	*
361	*	*	*	*	*	361	*	*	*	*	*
362	*	*	*	*	*	362	*	*	*	*	*
369	*	*	*	*	*	369	*	*	*	*	*
371	*	*	*	*	*	371	*	*	*	*	*
372	*	*	*	*	*	372	*	*	*	*	*
381	*	*	*	*	*	381	*	*	*	*	*
382	*	*	*	*	*	382	*	*	*	*	*
383	*	*	*	*	*	383	*	*	*	*	*
384	*	*	*	*	*	384	*	*	*	*	*
385	*	*	*	*	*	385	*	*	*	*	*
390	*	*	*	*	*	390	*	*	*	*	*

TABLE 20 VALUE ADDED

TABLE 01 PRODUCTION INDICES

YEAR		ISIC		YEAR		ISIC		NUMBER OF ISIC BRANCHES COVERED																					
6	7	8	9	0	1	6	7	8	9	0	1	TABLE																	
311	*	*	*	*	*	311	*	*	*	*	*	01	04	05	11	14	20	21	51										
313	*	*	*	*	*	313	*	*	*	*	*																		
314	*	*	*	*	*	314	*	*	*	*	*																		
321	*	*	*	*	*	321	*	*	*	*	*																		
322	*	*	*	*	*	322	*	*	*	*	*																		
323	*	*	*	*	*	323	*	*	*	*	*																		
324	*	*	*	*	*	324	*	*	*	*	*																		
331	*	*	*	*	*	331	*	*	*	*	*	1963	2A	2A	2A	2A	2A	2A	2A	2A									
332	*	*	*	*	*	332	*	*	*	*	*	1969	2A	2A	2A	2A	2A	2A	2A	2A									
341	*	*	*	*	*	341	*	*	*	*	*	1969	2A	2A	2A	2A	2A	2A	2A	2A									
342	*	*	*	*	*	342	*	*	*	*	*	1970	2A	2A	2A	2A	2A	2A	2A	2A									
351	*	*	*	*	*	351	*	*	*	*	*	1971	2A	2A	2A	2A	2A	2A	2A	2A									
352	*	*	*	*	*	352	*	*	*	*	*	1972	2A	2A	2A	2A	2A	2A	2A	2A									
353	*	*	*	*	*	353	*	*	*	*	*	1973	2A	2A	2A	2A	2A	2A	2A	2A									
354	*	*	*	*	*	354	*	*	*	*	*	1974	2A	2A	2A	2A	2A	2A	2A	2A									
355	*	*	*	*	*	355	*	*	*	*	*	1975	2A	2A	2A	2A	2A	2A	2A	2A									
356	*	*	*	*	*	356	*	*	*	*	*	1976	2A	2A	2A	2A	2A	2A	2A	2A									
361	*	*	*	*	*	361	*	*	*	*	*	1977	2A	2A	2A	2A	2A	2A	2A	2A									
362	*	*	*	*	*	362	*	*	*	*	*	1974	2A	2A	2A	2A	2A	2A	2A	2A									
369	*	*	*	*	*	369	*	*	*	*	*	1979	2A	2A	2A	2A	2A	2A	2A	2A									
371	*	*	*	*	*	371	*	*	*	*	*	1982	2A	2A	2A	2A	2A	2A	2A	2A									
372	*	*	*	*	*	372	*	*	*	*	*	1981	2A	2A	2A	2A	2A	2A	2A	2A									
381	*	*	*	*	*	381	*	*	*	*	*																		
382	*	*	*	*	*	382	*	*	*	*	*																		
383	*	*	*	*	*	383	*	*	*	*	*																		
384	*	*	*	*	*	384	*	*	*	*	*																		
385	*	*	*	*	*	385	*	*	*	*	*																		
390	*	*	*	*	*	390	*	*	*	*	*																		

NOTE: TABLE 01=NUMBER OF STATISTICAL UNITS
 TABLE 11=QTY. OF ELECTRICITY CONSUMED
 TABLE 21=GROSS FIXED CAPITAL FORMATION

TABLE 04 EMPLOYEE TABLE 05 WAGES AND SALARIES TABLE 14 GROSS OUTPUT

ISIC	YEAR		ISIC	YEAR		ISIC	YEAR	
	6	7		6	7		6	7
311	311	311
312	312	312
313	313	313
314	314	314
321	321	321
322	322	322
323	323	323
324	324	324
331	331	331
332	332	332
341	341	341
342	342	342
351	351	351
352	352	352
353	353	353
354	354	354
355	355	355
356	356	356
361	361	361
362	362	362
369	369	369
371	371	371
372	372	372
381	381	381
382	382	382
383	383	383
384	384	384
385	385	385
390	390	390

TABLE 21 VALUE ADDED TABLE 01 PRODUCTION INCREASES

ISIC	YEAR		ISIC	YEAR		ISIC	YEAR	
	6	7		6	7		6	7
311	311	311
312	312	312
313	313	313
314	314	314
321	321	321
322	322	322
323	323	323
324	324	324
331	331	331
332	332	332
341	341	341
342	342	342
351	351	351
352	352	352
353	353	353
354	354	354
355	355	355
356	356	356
361	361	361
362	362	362
369	369	369
371	371	371
372	372	372
381	381	381
382	382	382
383	383	383
384	384	384
385	385	385
390	390	390

TABLE 11 NUMBER OF STATISTICAL UNITS

TABLE 11 QUANTITY OF ELECTRICITY CONSUMED
TABLE 21 GROSS FIXED CAPITAL FORMATION

ISIC	YEAR		ISIC	YEAR		ISIC	YEAR	
	6	7		6	7		6	7
311	311	311
312	312	312
313	313	313
314	314	314
321	321	321
322	322	322
323	323	323
324	324	324
331	331	331
332	332	332
341	341	341
342	342	342
351	351	351
352	352	352
353	353	353
354	354	354
355	355	355
356	356	356
361	361	361
362	362	362
369	369	369
371	371	371
372	372	372
381	381	381
382	382	382
383	383	383
384	384	384
385	385	385
390	390	390

TABLE 04 EMPLOYMENT											TABLE 05 WAGES AND SALARIES											TABLE 14 GROSS OUTPUT													
ISIC	YEAR	6	6	7	7	7	7	7	7	7	8	ISIC	YEAR	6	6	7	7	7	7	7	7	7	8	ISIC	YEAR	6	6	7	7	7	7	7	7	7	8
		3	6	9	0	1	2	3	4	5	6			3	6	9	0	1	2	3	4	5	6			3	6	9	0	1	2	3	4	5	6
311		*	*	*	*	*	*	*	*	*	*																								
313		*	*	*	*	*	*	*	*	*	*																								
314		*	*	*	*	*	*	*	*	*	*																								
321		*	*	*	*	*	*	*	*	*	*																								
322		*	*	*	*	*	*	*	*	*	*																								
323		*	*	*	*	*	*	*	*	*	*																								
324		*	*	*	*	*	*	*	*	*	*																								
331		*	*	*	*	C	C	C	C	C	C																								
332		*	*	*	*	C	C	C	C	C	C																								
341		*	*	*	*	*	*	*	*	*	*																								
342		*	*	*	*	*	*	*	*	*	*																								
351		C	C	C	C	C	C	C	C	C	C																								
352		C	C	C	C	C	C	C	C	C	C																								
353		C	C	*	*	*	*	*	*	*	*																								
354		C	C	*	*	*	*	*	*	*	*																								
355		*	*	*	*	*	*	*	*	*	*																								
356		*	*	*	*	*	*	*	*	*	*																								
361		C	C	C	C	C	C	C	C	C	C																								
362		C	C	C	C	C	C	C	C	C	C																								
369		C	C	C	C	C	C	C	C	C	C																								
371		C	C	C	C	C	C	C	C	C	C																								
372		C	C	C	C	C	C	C	C	C	C																								
381		C	C	C	C	C	C	C	C	C	C																								
382		*	*	*	*	*	*	*	*	*	*																								
383		*	*	*	*	*	*	*	*	*	*																								
384		*	*	*	*	*	*	*	*	*	*																								
385		*	*	*	*	*	*	*	*	*	*																								
390		*	*	*	*	*	*	*	*	*	*																								

TABLE 20 VALUE ADDED											TABLE 51 PRODUCTION INDEXES											NUMBER OF ISIC BRANCHES COVERED								
ISIC	YEAR	6	6	7	7	7	7	7	7	8	ISIC	YEAR	6	6	7	7	7	7	7	7	8	TABLE								
		3	6	9	0	1	2	3	4	5			3	6	9	0	1	2	3	4	5	6	01	04	05	11	14	20	21	51
311		*	*	*	*	*	*	*	*	*																				
313		*	*	*	*	*	*	*	*	*																				
314		*	*	*	*	*	*	*	*	*																				
321		*	*	*	*	*	*	*	*	*																				
322		*	*	*	*	*	*	*	*	*																				
323		*	*	*	*	*	*	*	*	*																				
324		*	*	*	*	*	*	*	*	*																				
331		*	*	*	*	C	C	C	C	C																				
332		*	*	*	*	C	C	C	C	C																				
341		*	*	*	*	*	*	*	*	*																				
342		*	*	*	*	*	*	*	*	*																				
351		C	C	C	C	C	C	C	C	C																				
352		C	C	C	C	C	C	C	C	C																				
353		C	C	*	*	*	*	*	*	*																				
354		C	C	*	*	*	*	*	*	*																				
355		*	*	*	*	*	*	*	*	*																				
356		C	C	*	*	*	*	*	*	*																				
361		C	C	C	C	C	C	C	C	C																				
362		C	C	C	C	C	C	C	C	C																				
369		C	C	C	C	C	C	C	C	C																				
371		C	C	C	C	C	C	C	C	C																				
372		C	C	C	C	C	C	C	C	C																				
381		C	C	C	C	C	C	C	C	C																				
382		*	*	*	*	*	*	*	*	*																				
383		*	*	*	*	*	*	*	*	*																				
384		*	*	*	*	*	*	*	*	*																				
385		*	*	*	*	*	*	*	*	*																				
390		C	C	*	*	*	*	*	*	*																				

NOTE: TABLE 01=NUMBER OF STATISTICAL UNITS
 TABLE 11=QTY. OF ELECTRICITY CONSUMED
 TABLE 21=GROSS FIXED CAPITAL FORMATION

TABLE 04 EMPLOYMENT

TABLE 05 WAGES AND SALARIES

TABLE 14 GROSS OUTPUT

YEAR	6	6	7	7	7	7	7	7	7	8	8	
ISIC	3	6	9	0	1	2	3	4	5	6	7	8
311												
313												
314												
321												
322												
323												
324												
331												
332												
341												
342												
351												
352												
353												
354												
355												
356												
361												
362												
369												
371												
372												
381												
382												
383												
384												
385												
390												

TABLE 20 VALUE ADDED

TABLE 51 PRODUCTION INDEXES

YEAR	6	6	7	7	7	7	7	7	7	8	8	
ISIC	3	6	9	0	1	2	3	4	5	6	7	8
311												
313												
314												
321												
322												
323												
324												
331												
332												
341												
342												
351												
352												
353												
354												
355												
356												
361												
362												
369												
371												
372												
381												
382												
383												
384												
385												
390												

NUMBER OF ISIC BRANCHES COVERED

TABLE

01 64 05 11 14 20 21 51

YEAR	1963	1966	1969	1971	1972	1973	1974	1975	1976	1977	1978	1979	1980
311													
313													
314													
321													
322													
323													
324													
331													
332													
341													
342													
351													
352													
353													
354													
355													
356													
361													
362													
369													
371													
372													
381													
382													
383													
384													
385													
390													

NOTE: TABLE 01=NUMBER OF STATISTICAL UNITS
TABLE 11=QTY. OF ELECTRICITY CONSUMED
TABLE 21=GROSS FIXED CAPITAL FORMATION

TABLE 04 EMPLOYMENT

TABLE 05 WAGES AND SALARIES

TABLE 14 GROSS OUTPUT

YEAR	6	6	7	7	7	7	7	7	7	7	7	7	7	7	8	8
ISIC	3	6	9	0	1	2	3	4	5	6	7	8	9	0	1	
311			*	*	*	*	*	*	*	*	*	*	*	*	*	
313			*	*	*	*	*	*	*	*	*	*	*	*	*	
314																
321																
322			*	*	*	*	*	*	*	*	*	*	*	*	*	
323			*	*	*	*	*	*	*	*	*	*	*	*	*	
324																
331																
332			*	*	*	*	*	*	*	*	*	*	*	*	*	
341			*	*	*	*	*	*	*	*	*	*	*	*	*	
342			*	*	*	*	*	*	*	*	*	*	*	*	*	
351																
352																
353																
354																
355																
356																
361			*	*	*	*	*	*	*	*	*	*	*	*	*	
362			*	*	*	*	*	*	*	*	*	*	*	*	*	
369			*	*	*	*	*	*	*	*	*	*	*	*	*	
371																
372																
381			*	*	*	*	*	*	*	*	*	*	*	*	*	
382																
383																
384																
385																
390			*	*	*	*	*	*	*	*	*	*	*	*	*	

TABLE 20 VALUE ADDE.

TABLE 51 PRODUCTION INDEXES

YEAR	6	6	7	7	7	7	7	7	7	7	7	7	7	7	8	8
ISIC	3	6	9	0	1	2	3	4	5	6	7	8	9	0	1	
311			*	*	*	*	*	*	*	*	*	*	*	*	*	
313			*	*	*	*	*	*	*	*	*	*	*	*	*	
314																
321			*	*	*	*	*	*	*	*	*	*	*	*	*	
322			*	*	*	*	*	*	*	*	*	*	*	*	*	
323																
324																
331																
332			*	*	*	*	*	*	*	*	*	*	*	*	*	
341			*	*	*	*	*	*	*	*	*	*	*	*	*	
342			*	*	*	*	*	*	*	*	*	*	*	*	*	
351																
352																
353																
354																
355																
356																
361			*	*	*	*	*	*	*	*	*	*	*	*	*	
362			*	*	*	*	*	*	*	*	*	*	*	*	*	
369			*	*	*	*	*	*	*	*	*	*	*	*	*	
371																
372																
381			*	*	*	*	*	*	*	*	*	*	*	*	*	
382																
383																
384																
385																
390			*	*	*	*	*	*	*	*	*	*	*	*	*	

NUMBER OF ISIC BRANCHES COVERED

TABLE

01 04 05 11 14 20 21 51

YEAR	1963	1965	1967	1971	1972	1973	1974	1975	1976	1977	1979	1981
01												
04												
05												
11												
14												
20												
21												
51	1	1	1	1	4	4	7	9	9	9	4	1
					9	9	H	9	9	9	9	1
					4	4	H	9	8	9	1	
					4	4	A	9	9	9	11	
					4	4					1	
					4	4					1	
					4	4					1	
					4	4					1	
					4	4					1	
					4	4					1	
					4	4					1	
					4	4					1	

NOTE: TABLE 01=NUMBER OF STATISTICAL UNITS
TABLE 11=QTY. OF ELECTRICITY CONSUMED
TABLE 21=GROSS FIXED CAPITAL FORMATION

TABLE 04 EMPLOYMENT													TABLE 05 WAGES AND SALARIES													TABLE 14 GROSS OUTPUT													
YEAR	6	6	7	7	7	7	7	7	7	7	7	8	YEAR	6	6	7	7	7	7	7	7	7	7	7	8	YEAR	6	6	7	7	7	7	7	7	7	7	7	7	8
ISIC	6	9	0	1	2	3	4	5	6	7	8	9	ISIC	6	9	0	1	2	3	4	5	6	7	8	9	ISIC	3	6	9	0	1	2	3	4	5	6	7	8	9
311	*	*	*	*	*	*	*	*	*	*	*	*																											
313	C	C	C	C	C	C	C	C	C	C	C	C																											
314	C	C	C	C	C	C	C	C	C	C	C	C																											
321	*	*	*	*	*	*	*	*	*	*	*	*																											
322	*	*	*	*	*	*	*	*	*	*	*	*																											
323	*	*	*	*	*	*	*	*	*	*	*	*																											
324	*	*	*	*	*	*	*	*	*	*	*	*																											
331	*	*	C	C	C	C	C	C	C	C	C	C																											
332	*	*	C	C	C	C	C	C	C	C	C	C																											
341	C	C	C	C	C	C	C	C	C	C	C	C																											
342	C	C	C	C	C	C	C	C	C	C	C	C																											
351	C	C	C	C	C	C	C	C	C	C	C	C																											
352	C	C	*	*	*	*	*	*	*	*	*	*																											
353	*	*	*	*	*	*	*	*	*	*	*	*																											
354	*	*	C	C	C	C	C	C	C	C	C	C																											
355	C	C	C	C	C	C	C	C	C	C	C	C																											
356	C	C	C	C	C	C	C	C	C	C	C	C																											
361	*	*	C	C	C	C	C	C	C	C	C	C																											
362	*	*	C	C	C	C	C	C	C	C	C	C																											
369	*	*	C	C	C	C	C	C	C	C	C	C																											
371	*	*	*	*	*	*	*	*	*	*	*	*																											
372	*	*	*	*	*	*	*	*	*	*	*	*																											
381	*	*	*	*	*	*	*	*	*	*	*	*																											
382	*	*	*	*	*	*	*	*	*	*	*	*																											
383	*	*	*	*	*	*	*	*	*	*	*	*																											
384	*	*	C	C	C	C	C	C	C	C	C	C																											
385	*	*	C	C	C	C	C	C	C	C	C	C																											
390	*	*	C	C	C	C	C	C	C	C	C	C																											

TABLE 20 VALUE ADDED													TABLE 51 PRODUCTION INDEXES												
YEAR	6	6	7	7	7	7	7	7	7	7	7	8	YEAR	6	6	7	7	7	7	7	7	7	7	7	8
ISIC	3	6	9	0	1	2	3	4	5	6	7	8	ISIC	3	6	9	0	1	2	3	4	5	6	7	8
311	*	*	*	*	*	*	*	*	*	*	*	*													
313	C	C	C	C	C	C	C	C	C	C	C	C													
314	C	C	C	C	C	C	C	C	C	C	C	C													
321	*	*	*	*	*	*	*	*	*	*	*	*													
322	*	*	*	*	*	*	*	*	*	*	*	*													
323	*	*	*	*	*	*	*	*	*	*	*	*													
324	*	*	*	*	*	*	*	*	*	*	*	*													
331	*	*	C	C	C	C	C	C	C	C	C	C													
332	*	*	C	C	C	C	C	C	C	C	C	C													
341	C	C	C	C	C	C	C	C	C	C	C	C													
342	C	C	C	C	C	C	C	C	C	C	C	C													
351	C	C	C	C	C	C	C	C	C	C	C	C													
352	C	C	*	*	*	*	*	*	*	*	*	*													
353	*	*	*	*	*	*	*	*	*	*	*	*													
354	*	*	C	C	C	C	C	C	C	C	C	C													
355	C	C	C	C	C	C	C	C	C	C	C	C													
356	C	C	C	C	C	C	C	C	C	C	C	C													
361	*	*	C	C	C	C	C	C	C	C	C	C													
362	*	*	C	C	C	C	C	C	C	C	C	C													
369	*	*	C	C	C	C	C	C	C	C	C	C													
371	*	*	*	*	*	*	*	*	*	*	*	*													
372	*	*	*	*	*	*	*	*	*	*	*	*													
381	*	*	*	*	*	*	*	*	*	*	*	*													
382	*	*	*	*	*	*	*	*	*	*	*	*													
383	*	*	*	*	*	*	*	*	*	*	*	*													
384	*	*	C	C	C	C	C	C	C	C	C	C													
385	*	*	C	C	C	C	C	C	C	C	C	C													
390	*	*	C	C	C	C	C	C	C	C	C	C													

NUMBER OF ISIC BRANCHES COVERED

YEAR	TABLE							
	01	04	05	11	14	20	21	51
1963	24	24	24	24	24	24	24	25
1964	24	24	24	24	24	24	24	25
1965	24	24	24	24	24	24	24	25
1966	24	24	24	24	24	24	24	25
1967	24	24	24	24	24	24	24	25
1968	24	24	24	24	24	24	24	25
1969	24	24	24	24	24	24	24	25
1970	24	24	24	24	24	24	24	25
1971	24	24	24	24	24	24	24	25
1972	24	24	24	24	24	24	24	25
1973	24	24	24	24	24	24	24	25
1974	24	24	24	24	24	24	24	25
1975	24	24	24	24	24	24	24	27
1976	24	24	24	24	24	24	24	25
1977	24	24	24	24	24	24	24	25
1978	24	24	24	24	24	24	24	24
1979	24	24	24	24	24	24	24	24
1980	24	24	24	24	24	24	24	24

NOTE: TABLE 01=NUMBER OF STATISTICAL UNITS
 TABLE 11=QTY. OF ELECTRICITY CONSUMED
 TABLE 21=GROSS FIXED CAPITAL FORMATION

TABLE 04 - EMPLOYMENT

TABLE 05 - WAGES AND SALARIES

TABLE 14 - GROSS OUTPUT

YEAR	6	6	6	7	7	7	7	7	7	7	7	7	7	7	8	8
ISIC	3	6	9	0	1	2	3	4	5	6	7	8	9	0	1	
311
312
314
321
322
323
324
331	C	C	L	C	L	C	C	C	C	C	C	C	C	C	C	C
332	C	C	L	L	C	C	C	C	C	C	C	C	C	C	C	C
341
342
351	C	C	C	C	L	C	C	C	C	C	C	C	C	C	C	C
352	C	C	L	L	C	C	C	C	C	C	C	C	C	C	C	C
353
354
355
356	C	C	L	C	L	C	C	C	C	C	C	C	C	C	C	C
361
362
369
371
372
381
382
383
384
385
390	C	C	L	L	C	C	C	C	C	C	C	C	C	C	C	C

TABLE 20 - VALUE ADDED

TABLE 51 - PRODUCTION INDEXES

YEAR	6	6	6	7	7	7	7	7	7	7	7	7	7	7	8	8
ISIC	3	6	9	0	1	2	3	4	5	6	7	8	9	0	1	
311
312
314
321
322
323
324
331	C	C	L	C	L	C	C	C	C	C	C	C	C	C	C	C
332	C	C	L	L	C	C	C	C	C	C	C	C	C	C	C	C
341
342
351	C	C	L	C	L	C	C	C	C	C	C	C	C	C	C	C
352	C	C	L	L	C	C	C	C	C	C	C	C	C	C	C	C
353
354
355
356	C	C	L	C	L	C	C	C	C	C	C	C	C	C	C	C
361
362
369
371
372
381
382
383
384
385
390	C	C	L	L	C	C	C	C	C	C	C	C	C	C	C	C

NUMBER OF ISIC BRANCHES COVERED

TABLE

01 04 05 11 14 20 21 51

YEAR	1964	1965	1966	1967	1968	1969	1970	1971	1972	1973	1974	1975	1976	1977	1978	1979	1980
1964																	
1965																	
1966																	
1967	24	24	24	24	24	24	24	24	24	24	24	24	24	24	24	24	24
1968	24	24	24	24	24	24	24	24	24	24	24	24	24	24	24	24	24
1969	24	24	24	24	24	24	24	24	24	24	24	24	24	24	24	24	24
1970	24	24	24	24	24	24	24	24	24	24	24	24	24	24	24	24	24
1971	24	24	24	24	24	24	24	24	24	24	24	24	24	24	24	24	24
1972	24	24	24	24	24	24	24	24	24	24	24	24	24	24	24	24	24
1973	24	24	24	24	24	24	24	24	24	24	24	24	24	24	24	24	24
1974	24	24	24	24	24	24	24	24	24	24	24	24	24	24	24	24	24
1975	24	24	24	24	24	24	24	24	24	24	24	24	24	24	24	24	24
1976	24	24	24	24	24	24	24	24	24	24	24	24	24	24	24	24	24
1977	24	24	24	24	24	24	24	24	24	24	24	24	24	24	24	24	24
1978	24	24	24	24	24	24	24	24	24	24	24	24	24	24	24	24	24
1979	24	24	24	24	24	24	24	24	24	24	24	24	24	24	24	24	24
1980	24	24	24	24	24	24	24	24	24	24	24	24	24	24	24	24	24
1981	12																

NOTE: TABLE 01=NUMBER OF STATISTICAL UNITS
 TABLE 11=QTY. OF ELECTRICITY CONSUMED
 TABLE 21=GR075 FIXED CAPITAL FORMATION

TABLE 04 EMPLOYMENT

TABLE 05 WAGES AND SALARIES

TABLE 14 GROSS OUTPUT

YEAR	6	6	7	7	7	7	7	7	7	8					
ISIC	3	6	9	0	1	2	3	4	5	6	7	8	9	0	1
311
313
314
321
322
323
324
331
332
341
342
351
352
353
354
355
356
361
362
369
371
372
381
382
383
384
385
390

TABLE 20 VALUE ADDED

TABLE 51 PRODUCTION INDEXES

YEAR	6	6	7	7	7	7	7	7	7	8					
ISIC	3	6	9	0	1	2	3	4	5	6	7	8	9	0	1
311
313
314
321
322
323
324
331
332
341
342
351
352
353
354
355
356
361
362
369
371
372
381
382
383
384
385
390

NUMBER OF ISIC BRANCHES COVERED


YEAR	01	04	05	11	14	20	21	51
1963								
1966	27	27	27	27	27	26	24	
1969	28	28	28	28	28	28	28	
1973	28	28	28	28	28	28	28	
1971	28	28	28	28	28	28	28	
1972	28	28	28	28	28	28	28	
1973	28	28	28	28	28	28	28	
1974	28	28	28	28	28	28	28	
1975	28	28	28	28	28	28	28	
1976	28	28						
1977	28	28						
1978	28	28						
1979	28	28						
1980								
1981								

NOTE: TABLE 01=NUMBER OF STATISTICAL UNITS
TABLE 11=QTY. OF ELECTRICITY CONSUMED
TABLE 21=GROSS FIXED CAPITAL FORMATION

TABLE 04 EMPLOYMENT														TABLE 05 WAGES AND SALARIES														TABLE 14 GROSS OUTPUT													
YEAR 6 6 6 7 7 7 7 7 7 7 7 7 7 8 8														YEAR 6 6 6 7 7 7 7 7 7 7 7 7 7 8 8														YEAR 6 6 6 7 7 7 7 7 7 7 7 7 7 8 8													
ISIC 3 6 9 0 1 2 3 4 5 6 7 8 9 0 1														ISIC 3 6 9 0 1 2 3 4 5 6 7 8 9 0 1														ISIC 3 6 9 0 1 2 3 4 5 6 7 8 9 0 1													
311														311														311													
313														313														313													
314														314														314													
321														321														321													
322														322														322													
323														323														323													
324														324														324													
331														331														331													
332														332														332													
341														341														341													
342														342														342													
351														351														351													
352														352														352													
353														353														353													
354														354														354													
355														355														355													
356														356														356													
361														361														361													
362														362														362													
369														369														369													
371														371														371													
372														372														372													
381														381														381													
382														382														382													
383														383														383													
384														384														384													
385														385														385													
390														390														390													

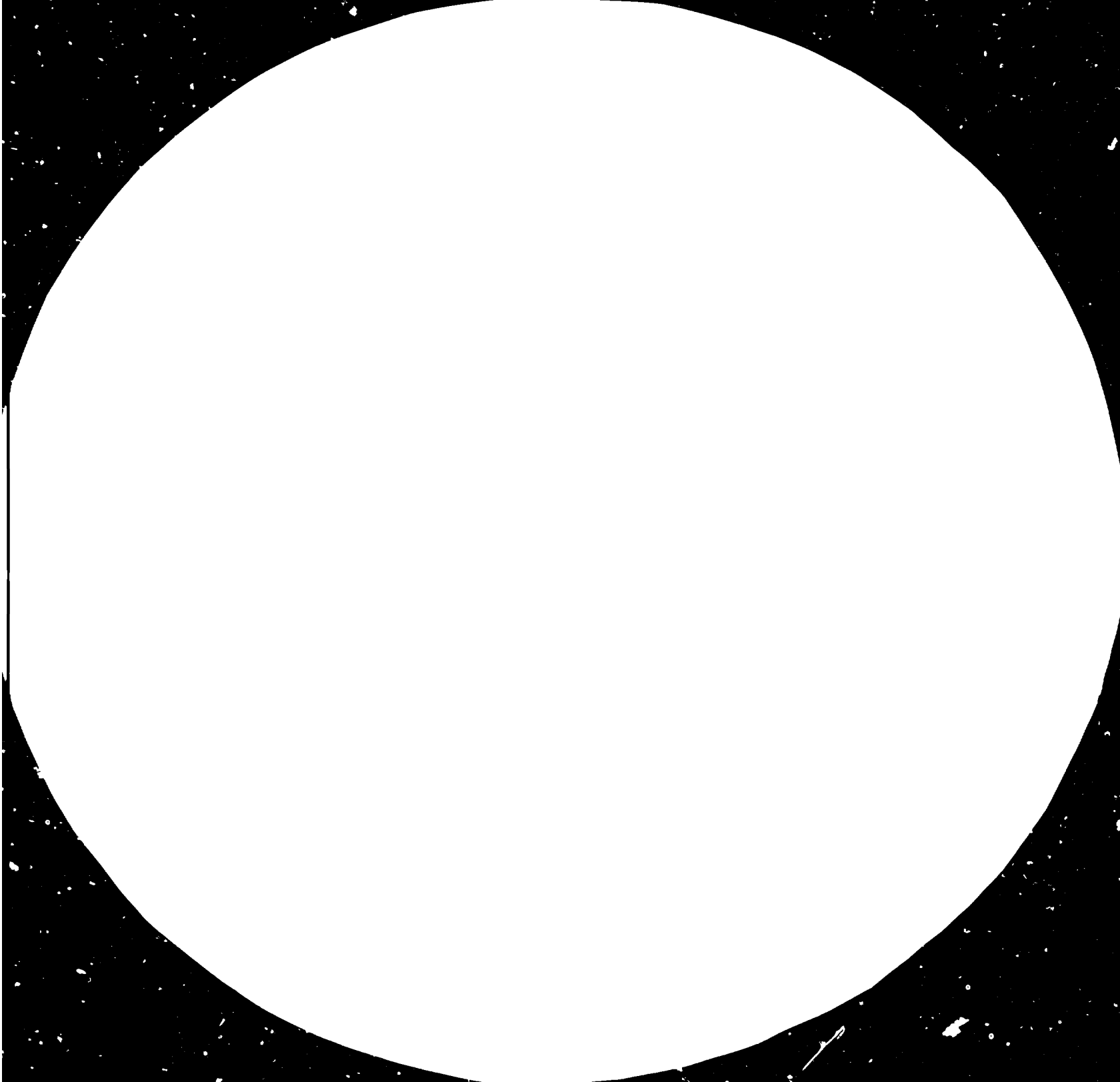
TABLE 20 VALUE ADDED														TABLE 51 PRODUCTION INDEXES														NUMBER OF ISIC BRANCHES COVERED						
YEAR 6 6 6 7 7 7 7 7 7 7 7 7 7 8 8														YEAR 6 6 6 7 7 7 7 7 7 7 7 7 7 8 8																				
ISIC 3 6 9 0 1 2 3 4 5 6 7 8 9 0 1														ISIC 3 6 9 0 1 2 3 4 5 6 7 8 9 0 1														TABLE						
																												01 04 05 11 14 20 21 51						
311														311	C C C C C C C C C C C C C C C C																			
313														313	C C C C C C C C C C C C C C C C																			
314														314	C C C C C C C C C C C C C C C C																			
321														321																				
322														322																				
323														323	C													YEAR						
324														324	C													1963 3						
331														331														1966 3						
332														332														1969 3						
341														341														1970 3						
342														342														1971 3						
351														351	C													1972 3						
352														352	C													1973 3						
353														353														1974 3						
354														354														1975 10						
355														355														1976 3						
356														356														1977 3						
361														361														1978 3						
362														362														1979 3						
369														369														1980 3						
371														371														1981 3						
372														372																				
381														381																				
382														382																				
383														383																				
384														384																				
385														385																				
390														390																				

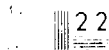
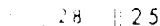
NOTE: TABLE 01=NUMBER OF STATISTICAL UNITS
TABLE 11=QTY. OF ELECTRICITY CONSUMED
TABLE 21=GROSS FIXED CAPITAL FORMATION



83.10.04

AD.85.03





200 Resolution Test Chart, 10 Lines/Inch

Resolution Test Chart, 10 Lines/Inch

TABLE 04 EMPLOYMENT

TABLE 05 WAGES AND SALARIES

TABLE 14 GROSS OUTPUT

YEAR 6 6 6 7 7 7 7 7 7 7 7 8 8		YEAR 6 6 6 7 7 7 7 7 7 7 7 8 8		YEAR 6 6 6 7 7 7 7 7 7 7 7 8 8	
ISIC	3 6 9 0 1 2 3 4 5 6 7 8 9 0 1	ISIC	3 6 9 0 1 2 3 4 5 6 7 8 9 0 1	ISIC	3 6 9 0 1 2 3 4 5 6 7 8 9 0 1
311		311		311	
313		313		313	
314		314		314	
321		321		321	
322		322		322	
323		323		323	
324		324		324	
331		331		331	
332		332		332	
341		341		341	
342		342		342	
351		351		351	
352		352		352	
353		353		353	
354		354		354	
355		355		355	
356		356		356	
361		361		361	
362		362		362	
369		369		369	
371		371		371	
372		372		372	
381		381		381	
382		382		382	
383		383		383	
384		384		384	
385		385		385	
390		390		390	

TABLE 20 VALUE ADDED

TABLE 51 PRODUCTION INDEXES

YEAR 6 6 6 7 7 7 7 7 7 7 7 8 8		YEAR 6 6 6 7 7 7 7 7 7 7 7 8 8		NUMBER OF ISIC BRANCHES COVERED							
ISIC	3 6 9 0 1 2 3 4 5 6 7 8 9 0 1	ISIC	3 6 9 0 1 2 3 4 5 6 7 8 9 0 1	TABLE							
				01	04	05	11	14	20	21	51
311		311	••••••••••••••••••••								
313		313	••••••••••••••••••••								
314		314	•								
321		321	•								
322		322	•								
323		323									
324		324									
331		331	•	•		•					1463
332		332	•	•		•					1969
341		341									1969
342		342	•	•		•					1970
351		351				•					1971
352		352									1972
353		353									1973
354		354									1974
355		355									1975
356		356									1976
361		361									1977
362		362									1978
369		369	•	•		•					1979
371		371									1980
372		372	••••••••••••••••••••								1981
381		381	•	•		•					
382		382	•	•		•					
383		383	•	•		•					
384		384	•	•		•					
385		385									
390		390	•	•		•					

NOTE: TABLE 01=NUMBER OF STATISTICAL UNITS
 TABLE 11=QTY. OF ELECTRICITY CONSUMED
 TABLE 21=GROSS FIXED CAPITAL FORMATION

TABLE 04 EMPLOYMENT

TABLE 05 WAGES AND SALARIES

TABLE 14 GROSS OUTPUT

YEAR 6 6 6 7 7 7 7 7 7 7 8 8	YEAR 6 6 6 7 7 7 7 7 7 7 8 8	YEAR 6 6 6 7 7 7 7 7 7 7 8 8
ISIC 3 6 9 0 1 2 3 4 5 6 7 8 9 0 1	ISIC 3 6 9 0 1 2 3 4 5 6 7 8 9 0 1	ISIC 3 6 9 0 1 2 3 4 5 6 7 8 9 0 1
311	311	311
313	313	313
314	314	314
321	321	321
322	322	322
323	323	323
324	324	324
331	331	331
332	332	332
341	341	341
342	342	342
351	351	351
352	352	352
353	353	353
354	354	354
355	355	355
356	356	356
361	361	361
362	362	362
369	369	369
371	371	371
372	372	372
381	381	381
382	382	382
383	383	383
384	384	384
385	385	385
390	390	390

TABLE 20 VALUE ADDED

TABLE 51 PRODUCTION INDEXES

YEAR 6 6 6 7 7 7 7 7 7 7 8 8	YEAR 6 6 6 7 7 7 7 7 7 7 8 8	NUMBER OF ISIC BRANCHES COVERED							
ISIC 3 6 9 0 1 2 3 4 5 6 7 8 9 0 1	ISIC 3 6 9 0 1 2 3 4 5 6 7 8 9 0 1	TABLE							
		01	04	05	11	14	20	21	51
311	311
313	313
314	314
321	321
322	322
323	323
324	324
331	331
332	332
341	341
342	342
351	351
352	352
353	353
354	354
355	355
356	356
361	361
362	362
369	369
371	371
372	372
381	381
382	382
383	383
384	384
385	385
390	390

NOTE: TABLE 01=NUMBER OF STATISTICAL UNITS
 TABLE 11=QTY. OF ELECTRICITY CONSUMED
 TABLE 21=GROSS FIXED CAPITAL FORMATION

TABLE 04 EMPLOYMENT													TABLE 05 WAGES AND SALARIES													TABLE 14 GROSS OUTPUT												
ISIC	YEAR	6	6	7	7	7	7	7	7	7	7	8	ISIC	YEAR	6	6	7	7	7	7	7	7	7	7	8	ISIC	YEAR	6	6	7	7	7	7	7	7	7	7	8
		3	6	9	0	1	2	3	4	5	6	7			3	6	9	0	1	2	3	4	5	6			3	6	9	0	1	2	3	4	5	6	7	
311		*	*	*	*	*	*	*	*	*	*	*																										
312		C	C	C	C	C	C	C	C	C	C	C																										
314		C	C	C	C	C	C	C	C	C	C	C																										
321		*	*	*	*	*	*	*	*	*	*	*																										
322		C	C	C	C	C	C	C	C	C	C	C																										
323		C	C	C	C	C	C	C	C	C	C	C																										
324		C	C	C	C	C	C	C	C	C	C	C																										
331		C	C	C	C	C	C	C	C	C	C	C																										
332		C	C	C	C	C	C	C	C	C	C	C																										
341		*	*	*	*	*	*	*	*	*	*	*																										
342		*	*	*	*	*	*	*	*	*	*	*																										
351		C	C	C	C	C	C	C	C	C	C	C																										
352		C	C	C	C	C	C	C	C	C	C	C																										
353		C	C	C	C	C	C	C	C	C	C	C																										
354		C	C	C	C	C	C	C	C	C	C	C																										
355		C	C	C	C	C	C	C	C	C	C	C																										
356		C	C	C	C	C	C	C	C	C	C	C																										
361		C	C	C	C	C	C	C	C	C	C	C																										
362		C	C	C	C	C	C	C	C	C	C	C																										
369		C	C	C	C	C	C	C	C	C	C	C																										
371		C	C	C	C	C	C	C	C	C	C	C																										
372		C	C	C	C	C	C	C	C	C	C	C																										
381		C	C	C	C	C	C	C	C	C	C	C																										
382		C	C	C	C	C	C	C	C	C	C	C																										
383		C	C	C	C	C	C	C	C	C	C	C																										
384		C	C	C	C	C	C	C	C	C	C	C																										
385		C	C	C	C	C	C	C	C	C	C	C																										
390		C	C	C	C	C	C	C	C	C	C	C																										

TABLE 20 VALUE ADDED													TABLE 51 PRODUCTION INDEXES													NUMBER OF ISIC BRANCHES COVERED							
ISIC	YEAR	6	6	7	7	7	7	7	7	7	7	8	ISIC	YEAR	6	6	7	7	7	7	7	7	7	7	8								
		3	6	9	0	1	2	3	4	5	6	7			3	6	9	0	1	2	3	4	5	6									
311		*	*	*	*	*	*	*	*	*	*	*																					
313		C	C	C	C	C	C	C	C	C	C	C																					
314		C	C	C	C	C	C	C	C	C	C	C																					
321		*	*	*	*	*	*	*	*	*	*	*																					
322		C	C	C	C	C	C	C	C	C	C	C																					
323		C	C	C	C	C	C	C	C	C	C	C																					
324		C	C	C	C	C	C	C	C	C	C	C																					
331		C	C	C	C	C	C	C	C	C	C	C																					
332		C	C	C	C	C	C	C	C	C	C	C																					
341		*	*	*	*	*	*	*	*	*	*	*																					
342		*	*	*	*	*	*	*	*	*	*	*																					
351		C	C	C	C	C	C	C	C	C	C	C																					
352		C	C	C	C	C	C	C	C	C	C	C																					
353		C	C	C	C	C	C	C	C	C	C	C																					
354		C	C	C	C	C	C	C	C	C	C	C																					
355		C	C	C	C	C	C	C	C	C	C	C																					
356		C	C	C	C	C	C	C	C	C	C	C																					
361		C	C	C	C	C	C	C	C	C	C	C																					
362		C	C	C	C	C	C	C	C	C	C	C																					
369		C	C	C	C	C	C	C	C	C	C	C																					
371		C	C	C	C	C	C	C	C	C	C	C																					
372		C	C	C	C	C	C	C	C	C	C	C																					
381		C	C	C	C	C	C	C	C	C	C	C																					
382		C	C	C	C	C	C	C	C	C	C	C																					
383		C	C	C	C	C	C	C	C	C	C	C																					
384		C	C	C	C	C	C	C	C	C	C	C																					
385		C	C	C	C	C	C	C	C	C	C	C																					
390		C	C	C	C	C	C	C	C	C	C	C																					

ISIC	YEAR	NUMBER OF ISIC BRANCHES COVERED							
		01	04	05	11	14	20	21	51
311		*	*	*	*	*	*	*	*
313		C	C	C	C	C	C	C	C
314		C	C	C	C	C	C	C	C
321		*	*	*	*	*	*	*	*
322		C	C	C	C	C	C	C	C
323		C	C	C	C	C	C	C	C
324		C	C	C	C	C	C	C	C
331		C	C	C	C	C	C	C	C
332		C	C	C	C	C	C	C	C
341		*	*	*	*	*	*	*	*
342		*	*	*	*	*	*	*	*
351		C	C	C	C	C	C	C	C
352		C	C	C	C	C	C	C	C
353		C	C	C	C	C	C	C	C
354		C	C	C	C	C	C	C	C
355		C	C	C	C	C	C	C	C
356		C	C	C	C	C	C	C	C
361		C	C	C	C	C	C	C	C
362		C	C	C	C	C	C	C	C
369		C	C	C	C	C	C	C	C
371		C	C	C	C	C	C	C	C
372		C	C	C	C	C	C	C	C
381		C	C	C	C	C	C	C	C
382		C	C	C	C	C	C	C	C
383		C	C	C	C	C	C	C	C
384		C	C	C	C	C	C	C	C
385		C	C	C	C	C	C	C	C
390		C	C	C	C	C	C	C	C

NOTE: TABLE 01=NUMBER OF STATISTICAL UNITS
 TABLE 11=QTY. OF ELECTRICITY CONSUMED
 TABLE 21=GROSS FIXED CAPITAL FORMATION

TABLE 04 EMPLOYMENT

TABLE 05 WAGES AND SALARIES

TABLE 14 GROSS OUTPUT

YEAR	6	6	7	7	7	7	7	7	7	8	8				
ISIC	3	6	9	0	1	2	3	4	5	6	7	8	9	0	1
311															
313															
314															
321															
322															
323															
324															
331															
332															
341															
342															
351															
352															
353															
354															
355															
356															
361															
362															
369															
371															
372															
381															
382															
383															
384															
385															
390															

TABLE 20 VALUE ADDED

TABLE 51 PRODUCTION INDEXES

YEAR	6	6	7	7	7	7	7	7	7	8	8				
ISIC	3	6	9	0	1	2	3	4	5	6	7	8	9	0	1
311															
313															
314															
321															
322															
323															
324															
331															
332															
341															
342															
351															
352															
353															
354															
355															
356															
361															
362															
369															
371															
372															
381															
382															
383															
384															
385															
390															

NUMBER OF ISIC BRANCHES COVERED

YEAR	TABLE							
	01	04	05	11	14	20	21	51
1963								1
1969								1
1969								1
1970								1
1971								1
1972								1
1973								1
1974								1
1975								1
1976								1
1977								1
1978								1
1979								1
1980								1

NOTE: TABLE 01=NUMBER OF STATISTICAL UNITS
 TABLE 11=QTY. OF ELECTRICITY CONSUMED
 TABLE 21=GROSS FIXED CAPITAL FORMATION

TABLE 04 EMPLOYMENT													TABLE 05 WAGES AND SALARIES													TABLE 14 GROSS OUTPUT												
YEAR 6 6 6 7 7 7 7 7 7 7 7 7 U R													YEAR 6 6 6 7 7 7 7 7 7 7 7 7 U R													YEAR 6 6 6 7 7 7 7 7 7 7 7 7 U R												
ISIC 3 6 9 0 1 2 3 4 5 6 7 8 9 0 1													ISIC 3 6 9 0 1 2 3 4 5 6 7 8 9 0 1													ISIC 3 6 9 0 1 2 3 4 5 6 7 8 9 0 1												
311	*	*	*	*	*	*	*	*	*	*	*	*																										
313	*	*	*	*	*	*	*	*	*	*	*	*																										
314	*	*	*	*	*	*	*	*	*	*	*	*																										
321	*	*	*	*	*	*	*	*	*	*	*	*																										
322	*	*	*	*	*	*	*	*	*	*	*	*																										
323	*	*	*	*	*	*	*	*	*	*	*	*																										
324	*	*	*	*	*	*	*	*	*	*	*	*																										
331	*	*	*	*	*	*	*	*	*	*	*	*																										
332	*	*	*	*	*	*	*	*	*	*	*	*																										
341	*	*	*	*	*	*	*	*	*	*	*	*																										
342	*	*	*	*	*	*	*	*	*	*	*	*																										
351	C	C	*	*	*	*	*	*	*	*	*	*																										
352	C	C	*	*	*	*	*	*	*	*	*	*																										
353	*	*	*	*	*	C	C	C	C	*	*	*																										
354	*	*	*	*	*	C	C	C	C	*	*	*																										
355	*	*	*	*	*	*	*	*	*	*	*	*																										
356	*	*	*	*	*	*	*	*	*	*	*	*																										
361	C	C	*	*	*	*	*	*	*	*	*	*																										
362	C	C	*	*	*	*	*	*	*	*	*	*																										
369	C	C	*	*	*	*	*	*	*	*	*	*																										
371	*	*	*	*	*	*	*	*	*	*	*	*																										
372	*	*	*	*	*	*	*	*	*	*	*	*																										
381	*	*	*	*	*	*	*	*	*	*	*	*																										
382	*	*	*	*	*	*	*	*	*	*	*	*																										
383	*	*	*	*	*	*	*	*	*	*	*	*																										
384	*	*	*	*	*	*	*	*	*	*	*	*																										
385	C	C	*	*	*	*	*	*	*	*	*	*																										
390	C	C	*	*	*	*	*	*	*	*	*	*																										

TABLE 20 VALUE ADDED													TABLE 51 PRODUCTION INDEXES													NUMBER OF ISIC BRANCHES COVERED							
YEAR 6 6 6 7 7 7 7 7 7 7 7 7 U R													YEAR 6 6 6 7 7 7 7 7 7 7 7 7 U R													TABLE							
ISIC 3 6 9 0 1 2 3 4 5 6 7 8 9 0 1													ISIC 3 6 9 0 1 2 3 4 5 6 7 8 9 0 1													01 04 05 11 14 20 21 51							
311	*	*	*	*	*	*	*	*	*	*	*	*																					
313	*	*	*	*	*	*	*	*	*	*	*	*																					
314	*	*	*	*	*	*	*	*	*	*	*	*																					
321	*	*	*	*	*	*	*	*	*	*	*	*																					
322	*	*	*	*	*	*	*	*	*	*	*	*																					
323	*	*	*	*	*	*	*	*	*	*	*	*																					
324	*	*	*	*	*	*	*	*	*	*	*	*																					
331	*	*	*	*	*	*	*	*	*	*	*	*																					
332	*	*	*	*	*	*	*	*	*	*	*	*																					
341	*	*	*	*	*	*	*	*	*	*	*	*																					
342	*	*	*	*	*	*	*	*	*	*	*	*																					
351	C	C	*	*	*	*	*	*	*	*	*	*																					
352	C	C	*	*	*	*	*	*	*	*	*	*																					
353	*	*	*	*	*	C	C	C	C	*	*	*																					
354	*	*	*	*	*	C	C	C	C	*	*	*																					
355	*	*	*	*	*	*	*	*	*	*	*	*																					
356	*	*	*	*	*	*	*	*	*	*	*	*																					
361	C	C	*	*	*	*	*	*	*	*	*	*																					
362	C	C	*	*	*	*	*	*	*	*	*	*																					
369	C	C	*	*	*	*	*	*	*	*	*	*																					
371	*	*	*	*	*	*	*	*	*	*	*	*																					
372	*	*	*	*	*	*	*	*	*	*	*	*																					
381	*	*	*	*	*	*	*	*	*	*	*	*																					
382	*	*	*	*	*	*	*	*	*	*	*	*																					
383	*	*	*	*	*	*	*	*	*	*	*	*																					
384	*	*	*	*	*	*	*	*	*	*	*	*																					
385	C	C	*	*	*	*	*	*	*	*	*	*																					
390	C	C	*	*	*	*	*	*	*	*	*	*																					

NOTE: TABLE 01=NUMBER OF STATISTICAL UNITS
 TABLE 11=QTY. OF ELECTRICITY CONSUMED
 TABLE 21=GROSS FIXED CAPITAL FORMATION

TABLE 04 EMPLOYMENT

TABLE 05 WAGES AND SALARIES

TABLE 14 GROSS OUTPUT

Table with 3 columns: Employment (Table 04), Wages and Salaries (Table 05), and Gross Output (Table 14). Each column contains a grid of data points for ISIC codes (311-390) and years (1966-1990).

TABLE 20 VALUE ADDED

TABLE 51 PRODUCTION INDEXES

Table with 3 columns: Value Added (Table 20), Production Indexes (Table 51), and Number of ISIC Branches Covered (Table). Includes ISIC codes and years, with a sub-table for branches covered from 1963 to 1981.

NOTE: TABLE 01=NUMBER OF STATISTICAL UNITS, TABLE 11=QTY. OF ELECTRICITY CONSUMED, TABLE 21=GROSS FIXED CAPITAL FORMATION

TABLE 04 EMPLOYMENT

TABLE 05 WAGES AND SALARIES

TABLE 14 GROSS OUTPUT

ISIC	YEAR											ISIC	YEAR											ISIC	YEAR										
	6	6	7	7	7	7	7	7	7	7	8		6	6	7	7	7	7	7	7	7	8	6		6	7	7	7	7	7	7	7	8		
311	311	311				
313	313	313				
314	314	314				
321	321	321				
322	C	C	322	322				
323	323	323				
324	C	C	324	324				
331	331	331				
332	332	332				
341	341	341				
342	342	342				
351	C	C	351	351				
352	C	C	352	352				
353	C	C	353	353	C	C	C	C	C	C	C	C				
354	C	C	354	354	C	C	C	C	C	C	C	C				
355	355	355				
356	C	C	356	356				
361	C	C	361	361	C	C	C	C	C	C	C	C				
362	C	C	362	362	C	C	C	C	C	C	C	C				
369	C	C	369	369	C	C	C	C	C	C	C	C				
371	C	C	371	371				
372	C	C	372	372				
381	381	381				
382	382	382				
383	383	383				
384	384	384				
385	C	C	385	385				
390	C	C	390	390				

TABLE 20 VALUE ADDED

TABLE 51 PRODUCTION INDEXES

ISIC	YEAR											ISIC	YEAR											NUMBER OF ISIC BRANCHES COVERED						
	6	6	7	7	7	7	7	7	7	7	8		6	6	7	7	7	7	7	7	7	8	01	04	05	11	14	20	21	51
311	311									
313	313									
314	314									
321	321									
322	322									
323	323									
324	324									
331	331									
332	332									
341	341									
342	342									
351	C	C	C	C	C	C	C	C	C	C	C	351									
352	C	C	C	C	C	C	C	C	C	C	C	352									
353	C	C	C	C	C	C	C	C	C	C	C	353									
354	C	C	C	C	C	C	C	C	C	C	C	354									
355	355									
356	C	C	C	C	C	C	C	C	C	C	C	356									
361	C	C	C	C	C	C	C	C	C	C	C	361									
362	C	C	C	C	C	C	C	C	C	C	C	362									
369	C	C	C	C	C	C	C	C	C	C	C	369									
371	371									
372	372									
381	381									
382	382									
383	383									
384	384									
385	C	C	C	C	C	C	C	C	C	C	C	385									
390	C	C	C	C	C	C	C	C	C	C	C	390									

NOTE: TABLE 01=NUMBER OF STATISTICAL UNITS
 TABLE 11=QTY. OF ELECTRICITY CONSUMED
 TABLE 21=GROSS FIXED CAPITAL FORMATION

TABLE 04 EMPLOYMENT

TABLE 05 WAGES AND SALARIES

TABLE 14 GROSS OUTPUT

YEAR	6	6	6	7	7	7	7	7	7	7	7	7	8	8
ISIC	3	6	9	0	1	2	3	4	5	6	8	9	0	1
311
312
314
321
322
323
324
331
332
341
342
351
352
353	C	C	C	C	C	C	C	C	C	C	C	C	C	C
354	C	C	C	C	C	C	C	C	C	C	C	C	C	C
355
356
361
362
369
371	C	C	C	C	C	C	C	C	C	C	C	C	C	C
372	C	C	C	C	C	C	C	C	C	C	C	C	C	C
381
382
383
384
385
390

TABLE 20 VALUE ADDED

TABLE 51 PRODUCTION INDEXES

YEAR	6	6	6	7	7	7	7	7	7	7	7	7	8	8
ISIC	3	6	9	0	1	2	3	4	5	6	8	9	0	1
311
313
314
321
322
323
324
331
332
341
342
351
352
353	C	C	C	C	C	C	C	C	C	C	C	C	C	C
354	C	C	C	C	C	C	C	C	C	C	C	C	C	C
355
356
361
362
369
371	C	C	C	C	C	C	C	C	C	C	C	C	C	C
372	C	C	C	C	C	C	C	C	C	C	C	C	C	C
381
382
383
384
385
390

NUMBER OF ISIC BRANCHES COVERED

TABLE

YEAR	01	04	05	11	14	20	21	51
1963	28							27
1966								11
1969	28	28						11
1970	28	28						27
1971	28	28						11
1972	28	28						11
1973	28	28						11
1974	28	28						11
1975	28	28						28
1976	28	28						6
1977	28	28						6
1978	28	28						6
1979	28	28						6
1980	28	28						6
1981								4

NOTE: TABLE 01=NUMBER OF STATISTICAL UNITS
 TABLE 11=QTY. OF ELECTRICITY CONSUMED
 TABLE 21=GROSS FIXED CAPITAL FORMATION

TABLE 04 EMPLOYMENT

TABLE 05 WAGES AND SALARIES

TABLE 14 GROSS OUTPUT

ISIC	YEAR 6 6 6 7 7 7 7 7 7 7 8 8 9	ISIC	YEAR 6 6 6 7 7 7 7 7 7 7 8 8 9	ISIC	YEAR 6 6 6 7 7 7 7 7 7 7 8 8 9
	3 6 9 0 1 2 3 4 5 6 7 8 9 0 1		3 6 9 0 1 2 3 4 5 6 7 8 9 0 1		3 6 9 0 1 2 3 4 5 6 7 8 9 0 1
311		311		311	
312		312		312	
314		314		314	
321		321		321	
322		322		322	
323		323		323	
324		324		324	
331		331		331	
332		332		332	
341		341		341	
342		342		342	
351		351		351	
352		352		352	
353		353		353	
354		354		354	
355		355		355	
356		356		356	
361		361		361	
362		362		362	
369		369		369	
371		371		371	
372		372		372	
381		381		381	
382		382		382	
383		383		383	
384		384		384	
385		385		385	
390		390		390	

TABLE 20 VALUE ADDED

TABLE 51 PRODUCTION INDEXES

ISIC	YEAR 6 6 6 7 7 7 7 7 7 7 8 8 9	ISIC	YEAR 6 6 6 7 7 7 7 7 7 7 8 8 9	NUMBER OF ISIC BRANCHES COVERED							
	3 6 9 0 1 2 3 4 5 6 7 8 9 0 1		3 6 9 0 1 2 3 4 5 6 7 8 9 0 1	TABLE							
				01	04	05	11	14	20	21	51
311		311	C C C C C C C C C C C C C C C								
312		312	C C C C C C C C C C C C C C C								
314		314	C C C C C C C C C C C C C C C								
321		321									
322		322									
323		323									
324		324									
331		331									
332		332									
341		341									
342		342									
351		351									
352		352									
353		353									
354		354									
355		355									
356		356									
361		361									
362		362									
369		369									
371		371									
372		372									
381		381									
382		382									
383		383									
384		384									
385		385									
390		390									

NOTE: TABLE 01=NUMBER OF STATISTICAL UNITS
 TABLE 11=QTY. OF ELECTRICITY CONSUMED
 TABLE 21=GROSS FIXED CAPITAL FORMATION

TABLE 04 EMPLOYMENT

TABLE 05 WAGES AND SALARIES

TABLE 14 GROSS OUTPUT

YEAR 6 6 6 7 7 7 7 7 7 7 7 7 8 8		YEAR 6 6 6 7 7 7 7 7 7 7 7 7 8 8		YEAR 6 6 6 7 7 7 7 7 7 7 7 7 8 8	
ISIC	3 6 9 0 1 2 3 4 5 6 7 8 9 0 1	ISIC	3 6 9 0 1 2 3 4 5 6 7 8 9 0 1	ISIC	3 6 9 0 1 2 3 4 5 6 7 8 9 0 1
311	C	311		311	
313	C	313		313	
314	C	314		314	
321	C	321		321	
322	C	322		322	
323	C	323		323	
324	C	324		324	
331	C	331		331	
332	C	332		332	
341	C	341		341	
342	C	342		342	
351	C	351		351	
352	C	352		352	
353	C	353		353	
354	C	354		354	
355	C	355		355	
356	C	356		356	
361	C	361		361	
362	C	362		362	
369	C	369		369	
371	C	371		371	
372	C	372		372	
381	C	381		381	
382	C	382		382	
383	C	383		383	
384	C	384		384	
385	C	385		385	
390	*	390		390	

TABLE 20 VALUE ADDED

TABLE 51 PRODUCTION INDEXES

YEAR 6 6 6 7 7 7 7 7 7 7 7 7 8 8		YEAR 6 6 6 7 7 7 7 7 7 7 7 7 8 8		NUMBER OF ISIC BRANCHES COVERED							
ISIC	3 6 9 0 1 2 3 4 5 6 7 8 9 0 1	ISIC	3 6 9 0 1 2 3 4 5 6 7 8 9 0 1	TABLE							
311		311	C C C C C C C C C C C C C C C C	01	04	05	11	14	20	21	91
313		313	C C C C C C C C C C C C C C C C								
314		314	C C C C C C C C C C C C C C C C								
321		321	*								
322		322	C								
323		323	*								
324		324	C								
331		331	C								
332		332	C								
341		341	*								
342		342	*								
351		351	*								
352		352									
353		353	* * * * *								
354		354	* * * * *								
355		355									
356		356	*								
361		361	* * * * *								
362		362	* * * * *								
369		369	* * * * *								
371		371	C								
372		372	C								
381		381	C								
382		382	C								
383		383	C								
384		384	C								
385		385	*								
390		390	*								

NOTE: TABLE 01=NUMBER OF STATISTICAL UNITS
 TABLE 11=QTY. OF ELECTRICITY CONSUMED
 TABLE 21=GROSS FIXED CAPITAL FORMATION

TABLE 04 EMPLOYMENT

TABLE 05 WAGES AND SALARIES

TABLE 14 GROSS OUTPUT

YEAR 6 6 6 7 7 7 7 7 7 7 7 8 8		YEAR 6 6 6 7 7 7 7 7 7 7 7 8 8		YEAR 6 6 6 7 7 7 7 7 7 7 7 8 8	
ISIC	3 6 9 0 1 2 3 4 5 6 7 8 9 0 1	ISIC	3 6 9 0 1 2 3 4 5 6 7 8 9 0 1	ISIC	3 6 9 0 1 2 3 4 5 6 7 8 9 0 1
311	C C C C C	311	C C C C C	311	C C C C C
313	C C C C C	313	C C C C C	313	C C C C C
314	C C C C C	314	C C C C C	314	C C C C C
321	C C C C C	321	C C C C C	321	C C C C C
322	C C C C C	322	C C C C C	322	C C C C C
323	C C C C C	323	C C C C C	323	C C C C C
324	C C C C C	324	C C C C C	324	C C C C C
331	C C C C C	331	C C C C C	331	C C C C C
332	C C C C C	332	C C C C C	332	C C C C C
341	C C C C C	341	C C C C C	341	C C C C C
342	C C C C C	342	C C C C C	342	C C C C C
351	C C C C C	351	C C C C C	351	C C C C C
352	C C C C C	352	C C C C C	352	C C C C C
353	C C C C C	353	C C C C C	353	C C C C C
354	C C C C C	354	C C C C C	354	C C C C C
355	C C C C C	355	C C C C C	355	C C C C C
356	C C C C C	356	C C C C C	356	C C C C C
361	C C C C C	361	C C C C C	361	C C C C C
362	C C C C C	362	C C C C C	362	C C C C C
369	C C C C C	369	C C C C C	369	C C C C C
371	C C C C C	371	C C C C C	371	C C C C C
372	C C C C C	372	C C C C C	372	C C C C C
381	C C C C C	381	C C C C C	381	C C C C C
382	C C C C C	382	C C C C C	382	C C C C C
383	C C C C C	383	C C C C C	383	C C C C C
384	C C C C C	384	C C C C C	384	C C C C C
385	C C C C C	385	C C C C C	385	C C C C C
390	C C C C C	390	C C C C C	390	C C C C C

TABLE 20 VALUE ADDED

TABLE 51 PRODUCTION INDEXES

YEAR 6 6 6 7 7 7 7 7 7 7 7 8 8		YEAR 6 6 6 7 7 7 7 7 7 7 7 8 8		NUMBER OF ISIC BRANCHES COVERED	
ISIC	3 6 9 0 1 2 3 4 5 6 7 8 9 0 1	ISIC	3 6 9 0 1 2 3 4 5 6 7 8 9 0 1	TABLE	
				01	04 05 11 14 20 21 51
311	C C C C C	311	C C C C C		
313	C C C C C	313	C C C C C		
314	C C C C C	314	C C C C C		
321	C C C C C	321	C C C C C		
322	C C C C C	322	C C C C C		
323	C C C C C	323	C C C C C		
324	C C C C C	324	C C C C C		
331	C C C C C	331	C C C C C		
332	C C C C C	332	C C C C C		
341	C C C C C	341	C C C C C		
342	C C C C C	342	C C C C C		
351	C C C C C	351	C C C C C		
352	C C C C C	352	C C C C C		
353	C C C C C	353	C C C C C		
354	C C C C C	354	C C C C C		
355	C C C C C	355	C C C C C		
356	C C C C C	356	C C C C C		
361	C C C C C	361	C C C C C		
362	C C C C C	362	C C C C C		
369	C C C C C	369	C C C C C		
371	C C C C C	371	C C C C C		
372	C C C C C	372	C C C C C		
381	C C C C C	381	C C C C C		
382	C C C C C	382	C C C C C		
383	C C C C C	383	C C C C C		
384	C C C C C	384	C C C C C		
385	C C C C C	385	C C C C C		
390	C C C C C	390	C C C C C		

NOTE: TABLE 01=NUMBER OF STATISTICAL UNITS
 TABLE 11=QTY. OF ELECTRICITY CONSUMED
 TABLE 21=GROSS FIXED CAPITAL FORMATION

TABLE 04 EMPLOYMENT

TABLE 05 WAGES AND SALARIES

TABLE 14 GROSS OUTPUT

YEAR	6	6	7	7	7	7	7	7	7	8	8				
ISIC	3	6	9	0	1	2	3	4	5	6	7	8	9	0	1
311															
313															
314															
321															
322															
323															
324															
331															
332															
341															
342															
351															
352															
353															
354															
355															
356															
361															
362															
369															
371															
372															
381															
382															
383															
384															
385															
390															

TABLE 20 VALUE ADDED

TABLE 51 PRODUCTION INDEXES

YEAR	6	6	7	7	7	7	7	7	7	8	8				
ISIC	3	6	9	0	1	2	3	4	5	6	7	8	9	0	1
311															
313															
314															
321															
322															
323															
324															
331															
332															
341															
342															
351															
352															
353															
354															
355															
356															
361															
362															
369															
371															
372															
381															
382															
383															
384															
385															
390															

NUMBER OF ISIC BRANCHES COVERED

TABLE

01 04 05 11 14 20 21 91

ISIC	YEAR	01	04	05	11	14	20	21	91
311	1963								7
313	1966								6
314	1969								7
321	1970								15
322	1971								8
323	1972								8
324	1973								8
331	1974								8
332	1975								20
341	1976								8
342	1977								7
351	1978								6
352	1979								5
353	1980								5
354	1981								5
355									
356									
361									
362									
369									
371									
372									
381									
382									
383									
384									
385									
390									

NOTE: TABLE 01=NUMBER OF STATISTICAL UNITS
 TABLE 11=QTY. OF ELECTRICITY CONSUMED
 TABLE 21=GROSS FIXED CAPITAL FORMATION

TABLE 04 EMPLOYMENT

TABLE 05 WAGES AND SALARIES

TABLE 14 GROSS OUTPUT

ISIC	YEAR											ISIC	YEAR											ISIC	YEAR										
	6	6	7	7	7	7	7	7	7	8	8		6	6	7	7	7	7	7	7	8	8	6		6	7	7	7	7	7	7	8	8		
311	311	311		
313	313	313		
314	314	314		
321	C	321	C	321	C		
322	C	322	C	322	C		
323	323	323		
324	C	324	C	324	C		
331	331	331		
332	332	332		
341	341	341		
342	342	342		
351	C	C	351	C	C	351	C	C		
352	C	C	352	C	C	352	C	C		
353	C	C	C	C	C	C	C	C	C	C	C	353	C	C	C	C	C	C	C	C	C	C	353	C	C	C	C	C	C	C	C	C			
354	C	C	C	C	C	C	C	C	C	C	C	354	C	C	C	C	C	C	C	C	C	C	354	C	C	C	C	C	C	C	C	C			
355	355	355	
356	C	356	C	356	C	
361	C	C	C	361	C	C	C	361	C	C	C	
362	C	C	C	362	C	C	C	362	C	C	C	
369	C	C	369	C	C	369	C	C	
371	C	C	371	C	C	371	C	C	
372	C	C	372	C	C	372	C	C	
381	381	381	
382	382	382	
383	383	383	
384	384	384	
385	C	C	385	C	C	385	C	C	
398	C	C	398	C	C	398	C	C	

TABLE 20 VALUE ADDED

TABLE 51 PRODUCTION INDEXES

ISIC	YEAR											ISIC	YEAR											NUMBER OF ISIC BRANCHES COVERED									
	6	6	7	7	7	7	7	7	7	8	8		6	6	7	7	7	7	7	7	8	8	TABLE										
311	311											
313	313										
314	314										
321	C	321	C	01	04	05	11	14	20	21	51		
322	C	322	C										
323	323											
324	C	324	C											
331	331											
332	332											
341	341											
342	342											
351	C	C	351	C	C	1963	2A	2A	2A	2A	2A	2A	2A	2A	2A	2A
352	C	C	352	C	C	1965	2A	2A	2A	2A	2A	2A	2A	2A	2A	2A
353	C	C	C	C	C	C	C	C	C	C	C	353	C	C	C	C	C	C	C	C	C	C	1969	2A	2A	2A	2A	2A	2A	2A	2A	2A	2A
354	C	C	C	C	C	C	C	C	C	C	C	354	C	C	C	C	C	C	C	C	C	C	1970	2A	2A	2A	2A	2A	2A	2A	2A	2A	2A
355	355	1971	2A	2A	2A	2A	2A	2A	2A	2A	2A	2A
356	C	356	C	1972	2A	2A	2A	2A	2A	2A	2A	2A	2A	2A
361	C	C	361	C	C	1973	2A	2A	2A	2A	2A	2A	2A	2A	2A	2A
362	C	C	362	C	C	1974	2A	2A	2A	2A	2A	2A	2A	2A	2A	2A
369	C	C	369	C	C	1975	2A	2A	2A	2A	2A	2A	2A	2A	2A	2A
371	C	C	371	C	C	1976	2A	2A	2A	2A	2A	2A	2A	2A	2A	2A
372	C	C	372	C	C	1977	2A	2A	2A	2A	2A	2A	2A	2A	2A	2A
381	381	1978	2A	2A	2A	2A	2A	2A	2A	2A	2A	2A
382	382	1979	2A	2A	2A	2A	2A	2A	2A	2A	2A	2A
383	383	1980	2A	2A	2A	2A	2A	2A	2A	2A	2A	2A
384	384	1981	2A	2A	2A	2A	2A	2A	2A	2A	2A	2A
385	C	C	385	C	C											
398	C	C	398	C	C											

NOTE: TABLE 01=NUMBER OF STATISTICAL UNITS
 TABLE 11=QTY. OF ELECTRICITY CONSUMED
 TABLE 21=GROSS FIXED CAPITAL FORMATION

TABLE 04 EMPLOYMENT

TABLE 05 WAGES AND SALARIES

TABLE 14 GROSS OUTPUT

YEAR	6	6	7	7	7	7	7	7	8	8					
ISIC	3	6	9	0	1	2	3	4	5	6	7	8	9	0	1
311
312
314
321
322
323
324
331
332
341
342
351
352
353
354
355
356
361
362
369
371
372
381
382
383
384
385
390

TABLE 20 VALUE ADDED

TABLE 51 PRODUCTION INDEXES

YEAR	6	6	7	7	7	7	7	7	8	8					
ISIC	3	6	9	0	1	2	3	4	5	6	7	8	9	0	1
311
312
314
321
322
323
324
331
332
341
342
351
352
353
354
355
356
361
362
369
371
372
381
382
383
384
385
390

NUMBER OF ISIC BRANCHES COVERED

TABLE

01 04 05 11 14 20 21 51

YEAR	01	04	05	11	14	20	21	51
1964	24	24	28		24	28	28	28
1965	24	28	28		28	28	28	28
1966								24
1967	24	28	24		24	28	28	28
1968								28
1969	24	28	24		24	24	28	28
1970								28
1971								28
1972	24	28	24		24	24	28	28
1973								28
1974								28
1975								28
1976	24	24	24		24	24		28
1977								26
1978								26
1979								26
1980								26
1981								

NOTE: TABLE 01=NUMBER OF STATISTICAL UNITS
 TABLE 11=QTY. OF ELECTRICITY CONSUMED
 TABLE 20=NET FIXED CAPITAL FORMATION

TABLE 04 EMPLOYMENT

TABLE 05 WAGES AND SALARIES

TABLE 14 GROSS OUTPUT

ISIC	YEAR										ISIC	YEAR										ISIC	YEAR																		
	6	6	6	7	7	7	7	7	7	7		8	8	6	6	6	7	7	7	7	7		7	7	8	8	6	6	6	7	7	7	7	7	7	7	8	8			
311	311	311		
313	313	313		
314	314	314		
321	321	321		
322	C	C	322	C	C	322	C	C			
323	C	C	C	C	C	C	C	C	C	C	C	323	C	C	C	C	C	C	C	C	C	C	C	.	323	C	C	C	C	C	C	C	C	C	C	C	C	C			
324	C	C	324	C	C	324	C	C		
331	331	331		
341	341	341		
342	342	342		
351	C	C	C	C	C	C	C	C	C	C	C	351	C	C	C	C	C	C	C	C	C	C	C	.	351	C	C	C	C	C	C	C	C	C	C	C	C	C	C		
352	C	C	352	C	C	352	C	C	
353	C	C	C	C	C	C	C	C	C	C	C	353	C	C	C	C	C	C	C	C	C	C	C	.	353	C	C	C	C	C	C	C	C	C	C	C	C	C	C		
354	C	C	C	C	C	C	C	C	C	C	C	354	C	C	C	C	C	C	C	C	C	C	C	.	354	C	C	C	C	C	C	C	C	C	C	C	C	C	C	C	
355	355	355	
356	C	C	356	C	C	356	C	C	
361	C	C	C	C	C	C	C	C	C	C	C	361	C	C	C	C	C	C	C	C	C	C	C	.	361	C	C	C	C	C	C	C	C	C	C	C	C	C	C		
362	C	C	C	C	C	C	C	C	C	C	C	362	C	C	C	C	C	C	C	C	C	C	C	.	362	C	C	C	C	C	C	C	C	C	C	C	C	C	C	C	
369	C	C	C	C	C	C	C	C	C	C	C	369	C	C	C	C	C	C	C	C	C	C	C	.	369	C	C	C	C	C	C	C	C	C	C	C	C	C	C	C	C
371	371	371	
372	372	372	
381	381	381	
382	382	382	
383	383	383	
384	384	384	
385	C	C	C	C	C	C	C	C	C	C	C	385	C	C	C	C	C	C	C	C	C	C	C	.	385	C	C	C	C	C	C	C	C	C	C	C	C	C	C	C	
390	C	C	C	C	C	C	C	C	C	C	C	390	C	C	C	C	C	C	C	C	C	C	C	.	390	C	C	C	C	C	C	C	C	C	C	C	C	C	C	C	C

TABLE 20 VALUE ADDED

TABLE 51 PRODUCTION INDEXES

ISIC	YEAR										ISIC	YEAR										NUMBER OF ISIC BRANCHES COVERED																	
	6	6	6	7	7	7	7	7	7	8		8	6	6	6	7	7	7	7	7	7	8	8	01	04	05	11	14	20	21	51								
311	311																
313	313															
314	314															
321	321															
322	C	C	322	C	C															
323	C	C	C	C	C	C	C	C	C	C	C	323	C	C	C	C	C	C	C	C	C	C	C	.															
324	C	C	324	C	C															
331	331															
341	341															
342	342															
351	C	C	C	C	C	C	C	C	C	C	C	351	C	C	C	C	C	C	C	C	C	C	C	.															
352	C	C	352	C	C															
353	C	C	C	C	C	C	C	C	C	C	C	353	C	C	C	C	C	C	C	C	C	C	C	.															
354	C	C	C	C	C	C	C	C	C	C	C	354	C	C	C	C	C	C	C	C	C	C	C	.															
355	355															
356	C	C	356	C	C															
361	C	C	C	C	C	C	C	C	C	C	C	361	C	C	C	C	C	C	C	C	C	C	C	.															
362	C	C	C	C	C	C	C	C	C	C	C	362	C	C	C	C	C	C	C	C	C	C	C	.															
369	C	C	C	C	C	C	C	C	C	C	C	369	C	C	C	C	C	C	C	C	C	C	C	.															
371	371															
372	372															
381	381															
382	382															
383	383															
384	384															
385	C	C	C	C	C	C	C	C	C	C	C	385	C	C	C	C	C	C	C	C	C	C	C	.															
390	C	C	C	C	C	C	C	C	C	C	C	390	C	C	C	C	C	C	C	C	C	C	C	.															

NOTE: TABLE 01=NUMBER OF STATISTICAL UNITS
 TABLE 11=QTY. OF ELECTRICITY CONSUMED
 TABLE 21=GROSS FIXED CAPITAL FORMATION

TABLE 04 EMPLOYMENT

TABLE 05 WAGES AND SALARIES

TABLE 14 GROSS OUTPUT

ISIC	YEAR									
	6	6	6	7	7	7	7	7	8	9
	3	6	9	0	1	2	3	4	5	6
311
313
314
321
322
323
324
331
332
341	C	C	C	C	C	C	C	C	C	C
342	C	C	C	C	C	C	C	C	C	C
351
352
353
354
355
356
361
362
369
371
372
381
382
383
384
385
390

ISIC	YEAR									
	6	6	6	7	7	7	7	7	8	8
	3	6	9	0	1	2	3	4	5	6
311
313
314
321
322
323
324
331
332
341	C	C	C	C	C	C	C	C	C	C
342	C	C	C	C	C	C	C	C	C	C
351
352
353
354
355
356
361
362
369
371
372
381
382
383
384
385
390

ISIC	YEAR									
	6	6	6	7	7	7	7	7	8	8
	3	6	9	0	1	2	3	4	5	6
311
313
314
321
322
323
324
331
332
341	C	C	C	C	C	C	C	C	C	C
342	C	C	C	C	C	C	C	C	C	C
351
352
353
354
355
356
361
362
369
371
372
381
382
383
384
385
390

TABLE 20 VALUE ADDED

TABLE 51 PRODUCTION INDICES

ISIC	YEAR									
	6	6	6	7	7	7	7	7	8	8
	3	6	9	0	1	2	3	4	5	6
311
313
314
321
322
323
324
331
332
341
342
351
352
353
354
355
356
361
362
369
371
372
381
382
383
384
385
390

ISIC	YEAR									
	6	6	6	7	7	7	7	7	8	8
	3	6	9	0	1	2	3	4	5	6
311
313
314
321
322
323
324
331
332
341
342
351
352
353
354
355
356
361
362
369
371
372
381
382
383
384
385
390

NUMBER OF ISIC BRANCHES COVERED

YEAR	TABLE						
	01	04	05	11	14	20	21
1963							4
1966							4
1969	27	25	26		28		4
1970	27	26	27		27		5
1971	28	28	28		28		5
1972	28	28	28		28		5
1973	28	28	28		28		5
1974	28	28	28		28		5
1975	28	28	28		28		24
1976	28	28	28		28		5
1977		28	28		27		5
1978							4
1979							4
1980							4
1981							4

NOTE: TABLE 01=NUMBER OF STATISTICAL UNITS
TABLE 11=QTY. OF ELECTRICITY CONSUMED
TABLE 21=GROSS FIXED CAPITAL FORMATION

TABLE 04 EMPLOYMENT													TABLE 05 WAGES AND SALARIES													TABLE 14 GROSS OUTPUT													
ISIC	YEAR												ISIC	YEAR												ISIC	YEAR												
	6	6	6	7	7	7	7	7	7	7	7	8		8	6	6	6	7	7	7	7	7	7	7	8		8	6	6	6	7	7	7	7	7	7	7	8	8
311	311	311
313	313	313
314	314	314
321	321	321
322	322	322
323	323	323
324	324	324
331	331	331
332	332	332
341	341	341
342	342	342
351	C	C	351	C	C	351	C	C	
352	C	C	352	C	C	352	C	C	
353	353	353	
354	354	354	
355	355	355	
356	356	356	
361	361	361	
362	362	362	
369	369	369	
371	371	371	
372	372	372	
381	381	381	
382	382	382	
383	383	383	
384	384	384	
385	385	385	
390	390	390	

TABLE 20 VALUE ADDED													TABLE 51 PRODUCTION INDEXES													NUMBER OF ISIC BRANCHES COVERED									
ISIC	YEAR												ISIC	YEAR												TABLE									
	6	6	6	7	7	7	7	7	7	7	8	8		6	6	6	7	7	7	7	7	7	8	8	01	04	05	11	14	20	21	51			
311	311	1963	2A	2A	2A	2A	2A	27	2A		
313	313	1966	2A	2A	2A	2A	2A	23	2A		
314	314	1969	2A	2A	2A	2A	27	27	23	2A	
321	321	1970	2A	2A	2A	2A	27	27	23	2A	
322	322	1971	2A	2A	2A	2A	2A	2A	23	2A	
323	323	1972	2A	2A	2A	2A	2A	2A	23	2A	
324	324	1973	2A	2A	2A	2A	2A	2A	23	2A	
331	331	1974	2A	2A	2A	2A	2A	2A	23	2A	
332	332	1975	2A	2A	2A	2A	2A	2A	23	2A	
341	341	1976	2A	2A	2A	2A	2A	2A	2A	2A	
342	342	1977	2A	2A	2A	2A	2A	2A	2A	2A	
351	C	C	351	1978	5	5	5	5	5	5	2A	2A	
352	C	C	352	1979	4	4	4	4	4	4	2A	2A	
353	353	1980							27	27	
354	354	1981							27	27	
355	355										
356	356										
361	361										
362	362										
369	369										
371	371										
372	372										
381	381										
382	382										
383	383										
384	384										
385	385										
390	390										

NOTE: TABLE 01=NUMBER OF STATISTICAL UNITS
 TABLE 11=QTY. OF ELECTRICITY CONSUMED
 TABLE 21=GROSS FIXED CAPITAL FORMATION

TABLE 04 EMPLOYMENT

YEAR	6	6	6	7	7	7	7	7	7	7	8	8
ISIC	3	5	9	0	1	2	3	4	5	6	7	8
311
313
314
321
322
323
324
331
332
341
342
351
352
353
354
355
356
361
362
369
371
372
381
382
383
384
385
390

TABLE 05 WAGES AND SALARIES

YEAR	6	6	6	7	7	7	7	7	7	7	8	8
ISIC	3	6	9	0	1	2	3	4	5	6	7	8
311
313
314
321	C	C	C	C
322	C	C	C	C	C
323	C	C	C	C	C
324	C	C	C	C	C
331	C	C	C	C
332	C	C	C	C	C
341	C	C	C	C	C
342	C	C	C	C	C
351	C	C	C	C	C
352	C	C	C	C	C
353	C	C	C	C	C
354	C	C	C	C	C
355	C	C	C	C	C
356	C	C	C	C	C
361	C	C	C	C	C
362	C	C	C	C	C
369	C	C	C	C	C
371	C	C	C	C	C
372	C	C	C	C	C
381	C	C	C	C	C
382	C	C	C	C	C
383	C	C	C	C	C
384	C	C	C	C	C
385	C	C	C	C	C
390

TABLE 14 GROSS OUTPUT

YEAR	6	6	6	7	7	7	7	7	7	7	8	8
ISIC	3	0	9	0	1	2	3	4	5	6	7	8
311
313
314
321	C	C	C	C	C
322	C	C	C	C	C	C
323	C	C	C	C	C	C
324	C	C	C	C	C	C
331	C	C	C	C	C
332	C	C	C	C	C	C
341	C	C	C	C	C	C
342	C	C	C	C	C	C
351	C	C	C	C	C	C
352	C	C	C	C	C	C
353	C	C	C	C	C	C
354	C	C	C	C	C	C
355	C	C	C	C	C	C
356	C	C	C	C	C	C
361	C	C	C	C	C	C
362	C	C	C	C	C	C
369	C	C	C	C	C	C
371	C	C	C	C	C	C
372	C	C	C	C	C	C
381	C	C	C	C	C	C
382	C	C	C	C	C	C
383	C	C	C	C	C	C
384	C	C	C	C	C	C
385	C	C	C	C	C	C
390

TABLE 20 VALUE ADDED

YEAR	6	6	6	7	7	7	7	7	7	7	8	8
ISIC	3	6	9	0	1	2	3	4	5	6	7	8
311
313
314
321	C	C	C	C	C
322	C	C	C	C	C	C
323	C	C	C	C	C	C
324	C	C	C	C	C	C
331	C	C	C	C	C
332	C	C	C	C	C	C
341	C	C	C	C	C	C
342	C	C	C	C	C	C
351	C	C	C	C	C	C
352	C	C	C	C	C	C
353	C	C	C	C	C	C
354	C	C	C	C	C	C
355	C	C	C	C	C	C
356	C	C	C	C	C	C
361	C	C	C	C	C	C
362	C	C	C	C	C	C
369	C	C	C	C	C	C
371	C	C	C	C	C	C
372	C	C	C	C	C	C
381	C	C	C	C	C	C
382	C	C	C	C	C	C
383	C	C	C	C	C	C
384	C	C	C	C	C	C
385	C	C	C	C	C	C
390

TABLE 51 PRODUCTION INDEXES

YEAR	6	6	6	7	7	7	7	7	7	7	8	8
ISIC	3	6	9	0	1	2	3	4	5	6	7	8
311
313
314
321
322
323
324
331
332
341
342
351
352
353
354
355
356
361
362
369
371
372
381
382
383
384
385
390

NUMBER OF ISIC BRANCHES COVERED

YEAR	TABLE					
	01	04	05	11	14	21 51
1963						
1966			28		28	27
1969			28		28	27
1970			28		28	28
1971			28		28	28
1972	24	28	28		28	28
1973			28		28	28
1974			28		28	28
1975			28		28	28
1976			28		28	22
1977			28		28	22
1978			28		28	22
1979			28		28	15
1980			28		28	13

NOTE: TABLE 01=NUMBER OF STATISTICAL UNITS
TABLE 11=QTY. OF ELECTRICITY CONSUMED
TABLE 21=GROSS FIXED CAPITAL FORMATION

TABLE 04 EMPLOYMENT

TABLE 05 WAGES AND SALARIES

TABLE 14 GROSS OUTPUT

TABLE 04 EMPLOYMENT											TABLE 05 WAGES AND SALARIES											TABLE 14 GROSS OUTPUT										
YEAR 6 6 6 7 7 7 7 7 7 7 7 8 8											YEAR 6 6 6 7 7 7 7 7 7 7 7 8 8											YEAR 6 6 6 7 7 7 7 7 7 7 7 8 8										
ISIC 3 6 9 0 1 2 3 4 5 6 7 8 9 0 1											ISIC 3 6 9 0 1 2 3 4 5 6 7 8 9 0 1											ISIC 3 6 9 0 1 2 3 4 5 6 7 8 9 0 1										
311	311	311	311					
313	313	313	313					
314	314	314	314					
321	C	C	C	C	C	C	C	C	C	C	C	321	C	C	C	C	C	321	C	C	C	C	321	C	C	C	C					
322	C	C	C	C	C	C	C	C	C	C	C	322	C	C	C	C	C	322	C	C	C	C	322	C	C	C	C					
323	323	323	323					
324	324	324	324					
331	331	331	331					
332	332	332	332					
341	341	341	341					
342	342	342	342					
351	351	351	351					
352	352	352	352					
353	353	353	353					
354	354	354	354					
355	355	355	355					
356	356	356	356					
361	C	C	C	C	C	C	C	C	C	C	C	361	C	C	C	C	C	361	C	C	C	C	361	C	C	C	C					
362	C	C	C	C	C	C	C	C	C	C	C	362	C	C	C	C	C	362	C	C	C	C	362	C	C	C	C					
369	C	C	C	C	C	C	C	C	C	C	C	369	C	C	C	C	C	369	C	C	C	C	369	C	C	C	C					
371	371	371	371					
372	372	372	372					
381	C	C	C	C	C	C	C	C	C	C	C	381	C	C	C	C	C	381	C	C	C	C	381	C	C	C	C					
382	C	C	C	C	C	C	C	C	C	C	C	382	C	C	C	C	C	382	C	C	C	C	382	C	C	C	C					
383	383	383	383					
384	384	384	384					
385	385	C	C	C	C	C	385	C	C	C	C	385	C	C	C	C					
390	390	C	C	C	C	C	390	C	C	C	C	390	C	C	C	C					

TABLE 20 VALUE ADDED

TABLE 51 PRODUCTION INDEXES

TABLE 20 VALUE ADDED											TABLE 51 PRODUCTION INDEXES											NUMBER OF ISIC BRANCHES COVERED						
YEAR 6 6 6 7 7 7 7 7 7 7 7 8 8											YEAR 6 6 6 7 7 7 7 7 7 7 7 8 8											TABLE						
ISIC 3 6 9 0 1 2 3 4 5 6 7 8 9 0 1											ISIC 3 6 9 0 1 2 3 4 5 6 7 8 9 0 1											01 04 05 11 14 20 21 51						
311	311
313	313
314	314
321	C	C	C	C	C	C	C	C	C	C	C	321
322	C	C	C	C	C	C	C	C	C	C	C	322
323	323
324	324
331	331
332	332
341	341
342	342
351	351
352	352
353	353
354	354
355	355
356	356
361	C	C	C	C	C	C	C	C	C	C	C	361
362	C	C	C	C	C	C	C	C	C	C	C	362
369	C	C	C	C	C	C	C	C	C	C	C	369
371	371
372	372
381	C	C	C	C	C	C	C	C	C	C	C	381
382	C	C	C	C	C	C	C	C	C	C	C	382
383	383
384	384
385	385
390	390

NOTE: TABLE 01=NUMBER OF STATISTICAL UNITS
 TABLE 11=QTY. OF ELECTRICITY CONSUMED
 TABLE 21=GROSS FIXED CAPITAL FORMATION

TABLE 04 EMPLOYMENT

TABLE 05 WAGES AND SALARIES

TABLE 14 GROSS OUTPUT

YEAR	6	6	7	7	7	7	7	7	7	8	8				
ISIC	3	6	9	0	1	2	3	4	5	6	7	8	9	0	1
311			C	C	C	C			C	C	C	C			
312			C	C	C	C			C	C	C	C			
314															
321					C	C			C	C	C	C			
322					C	C			C	C	C	C			
323															
324															
331			C	C	C	C			C	C	C	C			
332			C	C	C	C			C	C	C	C			
341					*	*			*	*	*	*			
342															
351															
352															
353															
354															
355															
356															
361															
362															
369															
371															
372															
381															
382															
383															
384															
385															
390			*	*	*	*			*	*	*	*			

TABLE 20 VALUE ADDED

TABLE 51 PRODUCTION INDEXES

YEAR	6	6	7	7	7	7	7	7	7	8	8				
ISIC	3	6	9	0	1	2	3	4	5	6	7	8	9	0	1
311			C	C	C	C			C	C	C	C			
312			C	C	C	C			C	C	C	C			
314															
321					C	C			C	C	C	C			
322					C	C			C	C	C	C			
323															
324															
331			C	C	C	C			C	C	C	C			
332			C	C	C	C			C	C	C	C			
341					*	*			*	*	*	*			
342															
351															
352															
353															
354															
355															
356															
361															
362															
369															
371															
372															
381															
382															
383															
384															
385															
390			*	*	*	*			*	*	*	*			

NUMBER OF ISIC BRANCHES COVERED

TABLE

01 04 05 11 14 20 21 51

NOTE: TABLE 01=NUMBER OF STATISTICAL UNITS
 TABLE 11=QTY. OF ELECTRICITY CONSUMED
 TABLE 21=GROSS FIXED CAPITAL FORMATION

TABLE 04 EMPLOYMENT

TABLE 05 WAGES AND SALARIES

TABLE 14 GROSS OUTPUT

ISIC	YEAR 6 6 6 7 7 7 7 7 7 7 8 H 3 6 9 0 1 2 3 4 5 6 7 8 9 0 1	ISIC	YEAR 6 6 6 7 7 7 7 7 7 7 8 H 3 6 9 0 1 2 3 4 5 6 7 8 9 0 1	ISIC	YEAR 6 6 6 7 7 7 7 7 7 7 8 H 3 6 9 0 1 2 3 4 5 6 7 8 9 0 1
311	• • • • •	311	• • • • •	311	• • • • •
313	• • • • •	313	• • • • •	313	• • • • •
314		314		314	
321	• • • • •	321	• • • • •	321	• • • • •
322		322		322	
323		323		323	
324		324		324	
331	C C C • •	331	C C C • •	331	C • •
332	C C C	332	C C C	332	C
341		341		341	
342	C C C • • •	342	C C C • • •	342	C • •
351		351		351	
352	C C C	352	C C C	352	C
353		353		353	
354		354		354	
355		355		355	
356		356		356	
361		361		361	
362		362		362	
369	C C C	369	C C C	369	C
371		371		371	
372		372		372	
381		381		381	
382		382		382	
383		383		383	
384		384		384	
385		385		385	
390	C C C • • •	390	C C C • • •	390	C • • •

TABLE 20 VALUE ADDED

TABLE 51 PRODUCTION INDEXES

ISIC	YEAR 6 6 6 7 7 7 7 7 7 7 8 H 3 6 9 0 1 2 3 4 5 6 7 8 9 0 1	ISIC	YEAR 6 6 6 7 7 7 7 7 7 7 8 H 3 6 9 0 1 2 3 4 5 6 7 8 9 0 1	NUMBER OF ISIC BRANCHES COVERED							
311	• • • • •	311	C C C C C C C C C C C C C C	TABLE							
313	• • • • •	313	C C C C C C C C C C C C C C	01	04	05	11	14	20	21	51
314		314	C C C C C C C C C C C C C C								
321	• • • • •	321	• • • • •								
322		322									
323		323									
324		324									
331	C • • • •	331	C • • • •								
332	C	332	C								
341		341									
342	C • • • •	342	C • • • •								
351		351									
352	C	352	C								
353		353									
354		354									
355		355									
356		356									
361		361									
362		362									
369	C	369	• • • • •								
371		371									
372		372									
381		381									
382		382									
383		383									
384		384									
385		385									
390	C • • • •	390									

NOTE: TABLE 01=NUMBER OF STATISTICAL UNITS
TABLE 11=QTY. OF ELECTRICITY CONSUMED
TABLE 21=GROSS FIXED CAPITAL FORMATION

TABLE 04 EMPLOYMENT

TABLE 05 WAGES AND SALARIES

TABLE 14 GROSS OUTPUT

YEAR	6	6	6	7	7	7	7	7	7	7	7	7	7	8	8
ISIC	3	6	9	0	1	2	3	4	5	6	7	8	9	0	1
311				*	*	*	*	*	*	*	*	*	*	*	*
312				*	*	*	*	*	*	*	*	*	*	*	*
313				*	*	*	*	*	*	*	*	*	*	*	*
314				*	*	*	*	*	*	*	*	*	*	*	*
321				C	C	C	C	C	C	*					
322				C	C	C	C	C	C	*					
323				*	*	*	*	C	*	*	*	*	*	*	*
324				*	*	*	*	*	*	*	*	*	*	*	*
331				*	*	*	*	*	*	*	*	*	*	*	*
332				*	*	*	*	*	*	*	*	*	*	*	*
341				C	C	C	C	C	*						
342				C	C	C	C	C	*						
351				*	*	*	*	*	*	*	*	*	*	*	*
352				*	*	*	*	*	*	*	*	*	*	*	*
353				*	*	*	*	*	*	*	*	*	*	*	*
354				*	*	*	*	*	*	*	*	*	*	*	*
355				C	C	C	C	C	*						
356				C	C	C	C	C	*						
361				C	C	C	C	C	*						
362				C	C	C	C	C	*						
369				C	C	C	C	C	*						
371				*	*	*	*	*	*	*	*	*	*	*	*
372				*	*	*	*	*	*	*	*	*	*	*	*
381				C	C	C	C	C	*						
382				C	C	C	C	C	*						
383				C	C	C	C	C	*						
384				C	C	C	C	C	*						
385				C	C	C	C	C	*						
390				*	*	*	*	*	*	*	*	*	*	*	*

TABLE 20 VALUE ADDED

TABLE 51 PRODUCTION INDEXES

YEAR	6	6	6	7	7	7	7	7	7	7	7	7	7	8	8
ISIC	3	6	9	0	1	2	3	4	5	6	7	8	9	0	1
311															
313															
314															
321															
322															
323															
324															
331															
332															
341															
342															
351															
352															
353															
354															
355															
356															
361															
362															
369															
371															
372															
381															
382															
383															
384															
385															
390															

ISIC	NUMBER OF ISIC BRANCHES COVERED							
	01	04	05	11	14	20	21	51
311								
313								
314								
321								
322								
323								
324								
331								
332								
341								
342								
351								
352								
353								
354								
355								
356								
361								
362								
369								
371								
372								
381								
382								
383								
384								
385								
390								

NOTE: TABLE 01=NUMBER OF STATISTICAL UNITS
 TABLE 11=QTY. OF ELECTRICITY CONSUMED
 TABLE 21=GROSS FIXED CAPITAL FORMATION

TABLE 04 EMPLOYMENT

TABLE 05 WAGES AND SALARIES

TABLE 14 GROSS OUTPUT

ISIC	YEAR											ISIC	YEAR											ISIC	YEAR										
	6	6	7	7	7	7	7	7	7	8	8		6	6	7	7	7	7	7	7	8	8	6		6	7	7	7	7	7	7	8	8		
311	*	*	*	*	*	*	*	*	*	*	*	311	*	*	*	*	*	*	*	*	*	311	*	*	*	*	*	*	*						
313	*	*	*	*	*	*	*	*	*	*	*	313	*	*	*	*	*	*	*	*	*	313	*	*	*	*	*	*	*						
314	*	*	*	*	*	*	*	*	*	*	*	314	*	*	*	*	*	*	*	*	*	314	*	*	*	*	*	*	*						
323	*	*	*	*	*	*	*	*	*	*	*	323	*	*	*	*	*	*	*	*	*	323	*	*	*	*	*	*	*						
322	*	*	*	*	*	*	*	*	*	*	*	322	*	*	*	*	*	*	*	*	*	322	*	*	*	*	*	*	*						
323	*	*	*	*	*	*	*	*	*	*	*	323	*	*	*	*	*	*	*	*	*	323	*	*	*	*	*	*	*						
324	*	*	*	*	*	*	*	*	*	*	*	324	*	*	*	*	*	*	*	*	*	324	*	*	*	*	*	*	*						
331	*	*	*	*	*	*	*	*	*	*	*	331	*	*	*	*	*	*	*	*	*	331	*	*	*	*	*	*	*						
332	*	*	*	*	*	*	*	*	*	*	*	332	*	*	*	*	*	*	*	*	*	332	*	*	*	*	*	*	*						
341	*	*	*	*	*	*	*	*	*	*	*	341	*	*	*	*	*	*	*	*	*	341	*	*	*	*	*	*	*						
342	*	*	*	*	*	*	*	*	*	*	*	342	*	*	*	*	*	*	*	*	*	342	*	*	*	*	*	*	*						
351	*	*	*	*	*	*	*	*	*	*	*	351	*	*	*	*	*	*	*	*	*	351	*	*	*	*	*	*	*						
352	*	*	*	*	*	*	*	*	*	*	*	352	*	*	*	*	*	*	*	*	*	352	*	*	*	*	*	*	*						
353	*	*	*	*	*	*	*	*	*	*	*	353	*	*	*	*	*	*	*	*	*	353	*	*	*	*	*	*	*						
354	*	*	*	*	*	*	*	*	*	*	*	354	*	*	*	*	*	*	*	*	*	354	*	*	*	*	*	*	*						
355	*	*	*	*	*	*	*	*	*	*	*	355	*	*	*	*	*	*	*	*	*	355	*	*	*	*	*	*	*						
356	*	*	*	*	*	*	*	*	*	*	*	356	*	*	*	*	*	*	*	*	*	356	*	*	*	*	*	*	*						
361	*	*	*	*	*	*	*	*	*	*	*	361	*	*	*	*	*	*	*	*	*	361	*	*	*	*	*	*	*						
362	*	*	*	*	*	*	*	*	*	*	*	362	*	*	*	*	*	*	*	*	*	362	*	*	*	*	*	*	*						
369	*	*	*	*	*	*	*	*	*	*	*	369	*	*	*	*	*	*	*	*	*	369	*	*	*	*	*	*	*						
371	*	*	*	*	*	*	*	*	*	*	*	371	*	*	*	*	*	*	*	*	*	371	*	*	*	*	*	*	*						
372	*	*	*	*	*	*	*	*	*	*	*	372	*	*	*	*	*	*	*	*	*	372	*	*	*	*	*	*	*						
381	*	*	*	*	*	*	*	*	*	*	*	381	*	*	*	*	*	*	*	*	*	381	*	*	*	*	*	*	*						
382	*	*	*	*	*	*	*	*	*	*	*	382	*	*	*	*	*	*	*	*	*	382	*	*	*	*	*	*	*						
383	*	*	*	*	*	*	*	*	*	*	*	383	*	*	*	*	*	*	*	*	*	383	*	*	*	*	*	*	*						
384	*	*	*	*	*	*	*	*	*	*	*	384	*	*	*	*	*	*	*	*	*	384	*	*	*	*	*	*	*						
385	*	*	*	*	*	*	*	*	*	*	*	385	*	*	*	*	*	*	*	*	*	385	*	*	*	*	*	*	*						
390	*	*	*	*	*	*	*	*	*	*	*	390	*	*	*	*	*	*	*	*	*	390	*	*	*	*	*	*	*						

TABLE 20 VALUE ADDED

TABLE 51 PRODUCTION INDEXES

ISIC	YEAR											ISIC	YEAR											NUMBER OF ISIC BRANCHES COVERED							
	6	6	7	7	7	7	7	7	7	8	8		6	6	7	7	7	7	7	7	8	8	TABLE								
311	*	*	*	*	*	*	*	*	*	*	*	311	*	*	*	*	*	*	*	*	*										
313	*	*	*	*	*	*	*	*	*	*	*	313	*	*	*	*	*	*	*	*	*										
314	*	*	*	*	*	*	*	*	*	*	*	314	*	*	*	*	*	*	*	*	*										
321	*	*	*	*	*	*	*	*	*	*	*	321	*	*	*	*	*	*	*	*	*	01	04	05	11	14	20	21	51		
322	*	*	*	*	*	*	*	*	*	*	*	322	*	*	*	*	*	*	*	*	*										
323	*	*	*	*	*	*	*	*	*	*	*	323	*	*	*	*	*	*	*	*	*										
324	*	*	*	*	*	*	*	*	*	*	*	324	*	*	*	*	*	*	*	*	*										
331	*	*	*	*	*	*	*	*	*	*	*	331	*	*	*	*	*	*	*	*	*										
332	*	*	*	*	*	*	*	*	*	*	*	332	*	*	*	*	*	*	*	*	*										
341	*	*	*	*	*	*	*	*	*	*	*	341	*	*	*	*	*	*	*	*	*										
342	*	*	*	*	*	*	*	*	*	*	*	342	*	*	*	*	*	*	*	*	*										
351	*	*	*	*	*	*	*	*	*	*	*	351	*	*	*	*	*	*	*	*	*										
352	*	*	*	*	*	*	*	*	*	*	*	352	*	*	*	*	*	*	*	*	*										
353	*	*	*	*	*	*	*	*	*	*	*	353	*	*	*	*	*	*	*	*	*										
354	*	*	*	*	*	*	*	*	*	*	*	354	*	*	*	*	*	*	*	*	*										
355	*	*	*	*	*	*	*	*	*	*	*	355	*	*	*	*	*	*	*	*	*										
356	*	*	*	*	*	*	*	*	*	*	*	356	*	*	*	*	*	*	*	*	*										
361	*	*	*	*	*	*	*	*	*	*	*	361	*	*	*	*	*	*	*	*	*										
362	*	*	*	*	*	*	*	*	*	*	*	362	*	*	*	*	*	*	*	*	*										
369	*	*	*	*	*	*	*	*	*	*	*	369	*	*	*	*	*	*	*	*	*										
371	*	*	*	*	*	*	*	*	*	*	*	371	*	*	*	*	*	*	*	*	*										
372	*	*	*	*	*	*	*	*	*	*	*	372	*	*	*	*	*	*	*	*	*										
381	*	*	*	*	*	*	*	*	*	*	*	381	*	*	*	*	*	*	*	*	*										
382	*	*	*	*	*	*	*	*	*	*	*	382	*	*	*	*	*	*	*	*	*										
383	*	*	*	*	*	*	*	*	*	*	*	383	*	*	*	*	*	*	*	*	*										
384	*	*	*	*	*	*	*	*	*	*	*	384	*	*	*	*	*	*	*	*	*										
385	*	*	*	*	*	*	*	*	*	*	*	385	*	*	*	*	*	*	*	*	*										
390	*	*	*	*	*	*	*	*	*	*	*	390	*	*	*	*	*	*	*	*	*										

NOTE: TABLE 01=NUMBER OF STATISTICAL UNITS
 TABLE 11=QTY. OF ELECTRICITY CONSUMED
 TABLE 21=GROSS FIXED CAPITAL FORMATION

TABLE 04 EMPLOYMENT

TABLE 05 WAGES AND SALARIES

TABLE 14 GROSS OUTPUT

ISIC	YEAR 6 6 6 7 / 7 7 7 / 7 7 7 7 8 8	ISIC	YEAR 6 6 6 7 7 7 7 7 7 7 7 8 8	ISIC	YEAR 6 6 6 7 7 7 7 7 7 7 7 8 8
	3 6 9 0 1 2 3 4 5 6 7 8 9 0 1		3 6 9 0 1 2 3 4 5 6 7 8 9 0 1		3 6 9 0 1 2 3 4 5 6 7 8 9 0 1
311	.	311	.	311	.
313	.	313	.	313	.
314	.	314	.	314	.
321	.	321	.	321	.
322	.	322	.	322	.
323	.	323	.	323	.
324	.	324	.	324	.
331	.	331	.	331	.
332	.	332	.	332	.
341	.	341	.	341	.
342	.	342	.	342	.
351	C C C C C C C C C C C C C C	351	C C C C C C C C C C C C C C	351	C C C C C C C C C C C C C C
352	C C C C C C C C C C C C C C	352	C C C C C C C C C C C C C C	352	C C C C C C C C C C C C C C
353	C C C C C C C C C C C C C C	353	C C C C C C C C C C C C C C	353	C C C C C C C C C C C C C C
354	.	354	.	354	.
355	.	355	.	355	.
356	.	356	.	356	.
361	.	361	.	361	.
362	.	362	.	362	.
369	.	369	.	369	.
371	.	371	.	371	.
372	.	372	.	372	.
381	.	381	.	381	.
382	.	382	.	382	.
383	.	383	.	383	.
384	.	384	.	384	.
389	.	389	.	389	.
390	.	390	.	390	.

TABLE 20 VALUE ADDED

TABLE 51 PRODUCTION INDICES

ISIC	YEAR 6 5 6 7 / 7 7 7 / 7 7 7 7 8 8	ISIC	YEAR 6 6 7 7 7 7 7 7 7 7 8 8	NUMBER OF ISIC BRANCHES COVERED										
	3 6 9 0 1 2 3 4 5 7 8 9 0 1		3 6 9 0 1 2 3 4 5 6 7 8 9 0 1	TABLE										
				YEAR										
					01	04	05	11	14	20	21	51		
311	.	311	.	1961	29	28	28	28	28	28	28	28		
313	.	313	.	1968	28	28	28	27	28	28	28	28		
314	.	314	.	1969	28	28	28	28	28	28	28	28		
321	.	321	.	1970	28	28	28	28	28	28	28	28		
322	.	322	.	1971	28	28	28	28	28	28	28	28		
323	.	323	.	1972	28	28	28	28	28	28	28	28		
324	.	324	.	1973	28	28	28	28	28	28	28	28		
331	.	331	.	1974	28	28	28	28	28	28	28	28		
332	.	332	.	1975	28	28	28	28	28	28	28	28		
341	.	341	.	1976	28	28	28	28	28	28	28	28		
342	.	342	.	1977	28	28	28	28	28	28	28	28		
351	C C C C C C C C C C C C C C	351	.	1978	28	28	28	28	28	28	28	28		
352	C C C C C C C C C C C C C C	352	.	1979	28	28	28	28	28	28	28	28		
353	C C C C C C C C C C C C C C	353	.	1980	28	28	28	28	28	28	28	28		
354	.	354	.	1981	28	28	28	28	28	28	28	28		
355	.	355	.	1982	28	28	28	28	28	28	28	28		
356	.	356	.	1983	28	28	28	28	28	28	28	28		
361	.	361	.	1984	28	28	28	28	28	28	28	28		
362	.	362	.	1985	28	28	28	28	28	28	28	28		
369	.	369	.	1986	28	28	28	28	28	28	28	28		
371	.	371	.	1987	28	28	28	28	28	28	28	28		
372	.	372	.	1988	28	28	28	28	28	28	28	28		
381	.	381	.	1989	28	28	28	28	28	28	28	28		
382	.	382	.	1990	28	28	28	28	28	28	28	28		
383	.	383	.											
384	.	384	.											
385	.	385	.											
390	.	390	.											

NOTE: TABLE 01=NUMBER OF STATISTICAL UNITS
TABLE 11=INTY. OF ELECTRICITY CONSUMED
TABLE 21=GROSS FIXED CAPITAL FORMATION

TABLE 04 EMPLOYMENT

TABLE 05 WAGES AND SALARIES

TABLE 14 GROSS OUTPUT

ISIC	YEAR 6 6 6 7 7 7 7 7 7 7 8 8 3 6 9 0 1 2 3 4 5 6 7 8 9 0 1	ISIC	YEAR 6 6 6 7 7 7 7 7 7 7 7 8 8 3 6 9 0 1 2 3 4 5 6 7 8 9 0 1	ISIC	YEAR 6 6 6 7 7 7 7 7 7 7 7 8 8 3 6 9 0 1 2 3 4 5 6 7 8 9 0 1
311	•••••	311	•••••	311	C C C •••••
312	•••••	312	•••••	312	C C C •••••
313	•••••	313	•••••	313	C C C •••••
314	•••••	314	•••••	314	C C C •••••
321	•••••	321	•••••	321	C C C •••••
322	•••••	322	•••••	322	C C C •••••
323	•••••	323	•••••	323	C C C •••••
324	•••••	324	•••••	324	C C C •••••
331	•••••	331	•••••	331	C C C C C C C C C
332	•••••	332	•••••	332	C C C C C C C C C
341	•••••	341	•••••	341	C C C C C C C C C
342	•••••	342	•••••	342	C C C C C C C C C
351	•••••	351	•••••	351	C C C C C C C C C
352	C C C C C C C C C	352	•••••	352	C C C C C C C C C
353	C C C C C C C C C	353	•••••	353	C C C C C C C C C
354	C C C C C C C C C	354	•••••	354	C C C C C C C C C
355	•••••	355	•••••	355	C C C C C C C C C
356	•••••	356	•••••	356	C C C C C C C C C
361	•••••	361	•••••	361	C C C C C C C C C
362	•••••	362	•••••	362	C C C C C C C C C
369	•••••	369	•••••	369	•••••
371	•••••	371	•••••	371	•••••
372	•••••	372	•••••	372	•••••
381	C C C C C C C C C	381	C C C C C C C C C	381	C C C C C C C C C
382	C C C C C C C C C	382	C C C C C C C C C	382	C C C C C C C C C
383	•••••	383	C C C C C C C C C	383	C C C C C C C C C
384	C C C C C C C C C	384	C C C C C C C C C	384	C C C C C C C C C
385	C C C C C C C C C	385	C C C C C C C C C	385	C C C C C C C C C
390	•••••	390	•••••	390	•••••

TABLE 20 VALUE ADDED

TABLE 51 PRODUCTION INDEXES

ISIC	YEAR 6 6 6 7 7 7 7 7 7 7 8 8 3 6 9 0 1 2 3 4 5 6 7 8 9 0 1	ISIC	YEAR 6 6 6 7 7 7 7 7 7 7 7 8 8 3 6 9 0 1 2 3 4 5 6 7 8 9 0 1	NUMBER OF ISIC BRANCHES COVERED							
				TABLE							
				YEAR							
				01	04	05	11	14	20	21	51
311	•••••	311	•••••								
312	•••••	312	•••••								
313	•••••	313	•••••								
314	•••••	314	•••••								
321	•••••	321	•••••								
322	•••••	322	•••••								
323	•••••	323	•••••								
324	•••••	324	•••••								
331	•••••	331	•••••	1963	26	24					28
332	•••••	332	•••••	1966	26	26					28
341	•••••	341	•••••	1969	26	26				24	28
342	•••••	342	•••••	1970	26	26				24	28
351	•••••	351	•••••	1971	26	26		24		26	28
352	•••••	352	•••••	1972	23	26	26		24	26	28
353	•••••	353	•••••	1973	23	26	26		24	26	28
354	•••••	354	•••••	1974	24	26	26		25	26	28
355	•••••	355	•••••	1975	24	26	26		25	26	28
356	•••••	356	•••••	1976	24	26	25		27	26	28
361	•••••	361	•••••	1977	24	26	25		25	26	28
362	•••••	362	•••••	1978	24	26	25		25	26	28
369	•••••	369	•••••	1979	24	26	25		25	26	28
371	•••••	371	•••••	1980	24	26	25		25	26	28
372	•••••	372	•••••	1981							28
381	C C C C C C C C C	381	C C C C C C C C C								
382	C C C C C C C C C	382	C C C C C C C C C								
383	•••••	383	C C C C C C C C C								
384	C C C C C C C C C	384	C C C C C C C C C								
385	C C C C C C C C C	385	C C C C C C C C C								
390	•••••	390	•••••								

NOTE: TABLE 01=NUMBER OF STATISTICAL UNITS
TABLE 11=QTY. OF ELECTRICITY CONSUMED
TABLE 21=GROSS FIXED CAPITAL FORMATION

TABLE 04 EMPLOYMENT

TABLE 05 WAGES AND SALARIES

TABLE 14 GROSS OUTPUT

YEAR 6667777777788		YEAR 6667777777788		YEAR 6667777777788	
ISIC	369012345678901	ISIC	369012345678901	ISIC	369012345678901
311	311	311
313	313	313
314	314	314
321	321	321
322	C C C C C C C *	322	C C C C C *	322	C C C C C C C *
323	323	323
324	C C C C C C C *	324	C C C C C *	324	C C C C C C C *
331 C	331 C	331 C
332 C	332 C	332 C
341	341	341
342	342	342
351	C C C C C C C *	351	C C C C C *	351	C C C C C C C *
352	C C C C C C C *	352	C C C C C *	352	C C C C C C C *
353	C C C C C C C *	353	C C C C C *	353	C C C C C C C *
354	C C C C C C C *	354	C C C C C *	354	C C C C C C C *
355	355	355
356	C C C C C C C *	356	C C C C C *	356	C C C C C C C *
361	C C C C C C C *	361	C C C C C *	361	C C C C C C C *
362	C C C C C C C *	362	C C C C C *	362	C C C C C C C *
369	C C C C C C C *	369	C C C C C *	369	C C C C C C C *
371	C C C C C C C *	371	C C C C C *	371	C C C C C C C *
372	C C C C C C C *	372	C C C C C *	372	C C C C C C C *
381 C	381 C	381 C
382 C	382 C	382 C
383	383	383
384	384	384
385	C C C C C C C *	385	C C C C C *	385	C C C C C C C *
390	C C C C C C C *	390	C C C C C *	390	C C C C C C C *

TABLE 20 VALUE ADDED

TABLE 51 PRODUCTION INDEXES

YEAR 6667777777788		YEAR 6667777777788		NUMBER OF ISIC BRANCHES COVERED																																																																																																																																																																
ISIC	369012345678901	ISIC	369012345678901																																																																																																																																																																	
311	311		<table border="1"> <thead> <tr><th colspan="7">TABLE</th></tr> <tr><th></th><th>01</th><th>04</th><th>05</th><th>11</th><th>14</th><th>20</th><th>21</th><th>51</th></tr> </thead> <tbody> <tr><th colspan="9">YEAR</th></tr> <tr><td>1963</td><td></td><td></td><td></td><td></td><td></td><td></td><td></td><td>2A</td></tr> <tr><td>1966</td><td></td><td></td><td></td><td></td><td></td><td></td><td></td><td>2A</td></tr> <tr><td>1969</td><td></td><td></td><td></td><td></td><td></td><td></td><td></td><td>2A</td></tr> <tr><td>1970</td><td></td><td></td><td></td><td></td><td></td><td></td><td></td><td>2A</td></tr> <tr><td>1971</td><td></td><td></td><td></td><td></td><td></td><td></td><td></td><td>2A</td></tr> <tr><td>1972</td><td></td><td></td><td></td><td></td><td></td><td>2A</td><td>2A</td><td>2A</td></tr> <tr><td>1973</td><td></td><td></td><td></td><td></td><td></td><td>2A</td><td>2A</td><td>2A</td></tr> <tr><td>1974</td><td></td><td></td><td></td><td></td><td></td><td>2A</td><td>2A</td><td>2A</td></tr> <tr><td>1975</td><td></td><td></td><td></td><td></td><td></td><td>2A</td><td>2A</td><td>2A</td></tr> <tr><td>1976</td><td></td><td></td><td></td><td></td><td></td><td>2A</td><td>2A</td><td>2A</td></tr> <tr><td>1977</td><td></td><td></td><td></td><td></td><td></td><td>2A</td><td>2A</td><td>2A</td></tr> <tr><td>1978</td><td>2A</td><td>2A</td><td>2A</td><td></td><td></td><td>2A</td><td>2A</td><td>21</td></tr> <tr><td>1979</td><td>2A</td><td>2A</td><td>2A</td><td></td><td></td><td>2A</td><td>2A</td><td>21</td></tr> <tr><td>1980</td><td>2A</td><td>2A</td><td>2A</td><td>2A</td><td>2A</td><td></td><td></td><td>21</td></tr> <tr><td>1991</td><td></td><td></td><td></td><td></td><td></td><td></td><td></td><td></td></tr> </tbody> </table>	TABLE								01	04	05	11	14	20	21	51	YEAR									1963								2A	1966								2A	1969								2A	1970								2A	1971								2A	1972						2A	2A	2A	1973						2A	2A	2A	1974						2A	2A	2A	1975						2A	2A	2A	1976						2A	2A	2A	1977						2A	2A	2A	1978	2A	2A	2A			2A	2A	21	1979	2A	2A	2A			2A	2A	21	1980	2A	2A	2A	2A	2A			21	1991							
TABLE																																																																																																																																																																				
	01	04	05	11		14	20	21	51																																																																																																																																																											
YEAR																																																																																																																																																																				
1963									2A																																																																																																																																																											
1966									2A																																																																																																																																																											
1969									2A																																																																																																																																																											
1970									2A																																																																																																																																																											
1971									2A																																																																																																																																																											
1972							2A	2A	2A																																																																																																																																																											
1973							2A	2A	2A																																																																																																																																																											
1974							2A	2A	2A																																																																																																																																																											
1975							2A	2A	2A																																																																																																																																																											
1976							2A	2A	2A																																																																																																																																																											
1977							2A	2A	2A																																																																																																																																																											
1978	2A	2A	2A				2A	2A	21																																																																																																																																																											
1979	2A	2A	2A				2A	2A	21																																																																																																																																																											
1980	2A	2A	2A	2A		2A			21																																																																																																																																																											
1991																																																																																																																																																																				
313	313																																																																																																																																																																	
314	314																																																																																																																																																																	
321	321																																																																																																																																																																	
322	C C C C C C C *	322																																																																																																																																																																	
323	323																																																																																																																																																																	
324	C C C C C C C *	324																																																																																																																																																																	
331 C	331																																																																																																																																																																	
332 C	332																																																																																																																																																																	
341	341																																																																																																																																																																	
342	342																																																																																																																																																																	
351	C C C C C C C *	351																																																																																																																																																																	
352	C C C C C C C *	352																																																																																																																																																																	
353	C C C C C C C *	353																																																																																																																																																																	
354	C C C C C C C *	354																																																																																																																																																																	
355	355																																																																																																																																																																	
356	C C C C C C C *	356																																																																																																																																																																	
361	C C C C C C C *	361																																																																																																																																																																	
362	C C C C C C C *	362																																																																																																																																																																	
369	C C C C C C C *	369																																																																																																																																																																	
371	C C C C C C C *	371																																																																																																																																																																	
372	C C C C C C C *	372																																																																																																																																																																	
381 C	381																																																																																																																																																																	
382 C	382																																																																																																																																																																	
383	383																																																																																																																																																																	
384	384																																																																																																																																																																	
385	C C C C C C C *	385																																																																																																																																																																	
390	C C C C C C C *	390																																																																																																																																																																	

NOTE: TABLE 01=NUMBER OF STATISTICAL UNITS
 TABLE 11=QTY. OF ELECTRICITY CONSUMED
 TABLE 21=GROSS FIXED CAPITAL FORMATION

TABLE 04 EMPLOYMENT

TABLE 05 WAGES AND SALARIES

TABLE 14 GROSS OUTPUT

ISIC	YEAR											ISIC	YEAR											ISIC	YEAR										
	6	6	7	7	7	7	7	7	7	8	8		6	6	7	7	7	7	7	7	8	8	6		6	7	7	7	7	7	7	7	8	8	
311	C	C	311	C	C	311		
313	C	C	313	C	C	313		
314	314	314		
321	C	C	321	C	C	321		
322	C	C	322	C	C	322		
323	C	C	323	C	C	323		
324	C	C	324	C	C	324		
331	C	C	331	C	C	331		
332	C	C	332	C	C	332		
341	341	341		
342	342	342		
351	C	C	C	C	C	C	C	C	C	C	.	351	C	C	C	C	C	C	C	C	C	.	351	C	C	C	C	C	C	C	C	C			
352	C	C	352	C	C	352		
353	C	C	353	C	C	353		
354	C	C	354	C	C	354		
355	355	355		
356	C	C	C	C	C	C	C	C	C	C	.	356	C	C	C	C	C	C	C	C	C	.	356	C	C	C	C	C	C	C	C	C			
361	C	C	361	C	C	361		
362	C	C	362	C	C	362		
369	C	C	369	C	C	369		
371	371	371		
372	372	372		
381	C	C	381	C	C	381		
382	C	C	382	C	C	382		
383	383	383		
384	C	C	384	C	C	384		
385	C	C	385	C	C	385		
390	390	390		

TABLE 20 VALUE ADDED

TABLE 51 PRODUCTION INDEXES

ISIC	YEAR											ISIC	YEAR											NUMBER OF ISIC BRANCHES COVERED							
	6	6	7	7	7	7	7	7	7	8	8		6	6	7	7	7	7	7	7	8	8	TABLE								
																								01	04	05	11	14	20	21	51
311	C	C	311									
313	C	C	313									
314	314									
321	C	C	321									
322	C	C	322									
323	C	C	323									
324	C	C	324									
331	C	C	331									
332	C	C	332									
341	341									
342	342									
351	C	C	C	C	C	C	C	C	C	C	.	351										
352	C	C	352									
353	C	C	353									
354	C	C	354									
355	355									
356	C	C	C	C	C	C	C	C	C	C	.	356									
361	C	C	361									
362	C	C	362									
369	C	C	369									
371	371									
372	372									
381	C	C	381									
382	C	C	382									
383	383									
384	C	C	384									
385	C	C	385									
390	390									

TABLE 01=NUMBER OF STATISTICAL UNITS
TABLE 11=QTY. OF ELECTRICITY CONSUMED
TABLE 21=GROSS FIXED CAPITAL FORMATION

TABLE 04 EMPLOYMENT

TABLE 05 WAGES AND SALARIES

TABLE 14 GROSS OUTPUT

ISIC	YEAR										ISIC	YEAR										ISIC	YEAR									
	6	6	6	7	7	7	7	7	7	8		6	6	7	7	7	7	7	7	8	6		6	6	7	7	7	7	7	7	8	
311	311	311				
313	313	313			
314	314	314			
321	321	321			
322	322	322			
323	323	323			
324	324	324			
331	331	331			
332	332	332			
341	341	341			
342	342	342			
351	351	351			
352	352	352			
353	353	353			
354	354	354			
355	355	355			
356	356	356			
361	361	361			
362	362	362			
369	369	369			
371	371	371			
372	372	372			
381	381	381			
382	382	382			
383	383	383			
384	384	384			
385	385	385			
390	390	390			

TABLE 20 VALUE ADDED

TABLE 51 PRODUCTION INDEXES

ISIC	YEAR										ISIC	YEAR										NUMBER OF ISIC BRANCHES COVERED							
	6	6	6	7	7	7	7	7	7	8		6	6	7	7	7	7	7	7	8	TABLE								
311	311									
313	313									
314	314									
321	321									
322	322									
323	323									
324	324									
331	331									
332	332									
341	341									
342	342									
351	351									
352	352									
353	353									
354	354									
355	355									
356	356									
361	361									
362	362									
369	369									
371	371									
372	372									
381	381									
382	382									
383	383									
384	384									
385	385									
390	390									

NOTE: TABLE 01=NUMBER OF STATISTICAL UNITS
 TABLE 11=QTY. OF ELECTRICITY CONSUMED
 TABLE 21=GROSS FIXED CAPITAL FORMATION

APPENDIX

DEFINITION* OF VARIABLES FOR WHICH DATA ARE STORED IN THE CONSOLIDATED FIELDS

COUNTRY	CONSOLIDATED TABLE NUMBER				COUNTRY	CONSOLIDATED TABLE NUMBER			
	1	4	14	20		1	4	14	20
Afghanistan	01	03	14	...	Ethiopia	01	03c/	13	19
Algeria	01	04	14	20	Fiji	01	04	12	18
Angola	01	03	Finland	01	04	12	18
Argentina	01	04	14	...	France	...	04	13	19
Australia	01	04	12	18	Gambia	01	04	13	19
Austria	01	04	13	19	German Dem.Rep.	02	04	14	...
Bahamas	01	04	13	19	Germany, Fed.Rep.	01	04a/	13	19
Bangladesh	01	04	13	19	Ghana	01	03	13	19
Barbados	01	03	13	19	Greece	01	04	12	18
Belgium	01	04	...	18	Guatemala	01	03	13	19
Belize	14	...	Guyana	01	04
Bolivia	01	04a/	13	19	Haiti	01	04	...	19
Botswana	01	03	12	18	Honduras	01	03	13	19
Brazil	01	03	13	19	Hong Kong	01	04a/	13	19
Bulgaria	02	04	Hungary	02	04	14	20
Burma	01	03	13	20	Iceland	01	03	12	18
Burundi	02	04	14	...	India	01	03	12	18
Canada	01	04	12	18	Indonesia	01	04a/	13	18
Cape Verde	01	03	Iran	01	04	13	19
Central Af. Rep.	02	04	12	18	Iraq	01	04a/	12	18
Chile	01	04	13	19	Ireland	01	04	12	18
China	02	04	14	...	Israel	01	04	13	19
Colombia	01	04	13b/	19b/	Italy	02	04	14	20
Congo	02	04	13	19	Ivory Coast	02	04	13	19
Costa Rica	01	03	13	19	Jamaica	01	04	12	18
Cuba	...	04	14	...	Japan	01	04a/	14	20
Cyprus	01	04a/	13b/	19b/	Jordan	01	04a/	13	19
Czechoslovakia	02	04	14	20	Kenya	01	03	12	18
Dem. Kampuchea	01	03	13	19	Korea, Rep. of	01	04a/	13	19
Dem. Yemen	01	03	13	...	Kuwait	01	03c/	13	19
Denmark	01	04	12	18	Lesotho	01	04	13	19
Dominican Rep.	01	04	13b/	19	Liberia	01	03	13	...
Ecuador	01	04	13b/	19b/	Libyan Arab Jm.	01	04	13	19
Egypt	01	04	12	19	Luxembourg	02d/	04	12	18
El Salvador	01	03	14	19	Macau	01	03	13	19

* For footnotes and key to codes, see end of table.

(continued)

DEFINITION* OF VARIABLES FOR WHICH DATA ARE STORED IN THE CONSOLIDATED FIELDS
(continued)

COUNTRY	CONSOLIDATED TABLE NUMBER				COUNTRY	CONSOLIDATED TABLE NUMBER			
	1	4	14	20		1	4	14	20
Madagascar	01	04	13	19	Singapore	01	04	12	18
Malawi	01e/	04a/	12	18	Solomon Islands	...	04
Malaysia, West	01	04	12	18	Somalia	01	04	13	19
Sabah	01	03	12	18	South Africa	01	03	14f/	...
Sarawak	01	04	14	20	Spain	01	04	12	18
Mali	02	04	12	18	Sri Lanka	01	04	14	18b/
Malta	01	04	13	19	Sudan	01	04	13	18
Mauritania	02	04	14	20	Suriname	01	03	12	...
Mauritius	01	03	13	19	Swaziland	01	03	13	19
Mexico	01	04	13	19b/	Sweden	01	04	12	18
Mongolia	...	04	14	...	Switzerland	01	03	...	18
Morocco	01	04	14	20f/	Syrian Arab Rep.	01	03	13	19
Mozambique	01	04	14	20	Thailand	01	04	13	19
Netherlands	01	04	12	18	Togo	02	04a/	13	19
New Zealand	01	04	14	19	Tonga	01	04	13	...
Nicaragua	02	04	13	19	Trinidad+Tobago	01	04	14	20
Niger	01	03	Tunisia	01	04	13	19
Nigeria	01	04	13	19	Turkey	01	04a/	13	19
Norway	01	04	14	20	Uganda	01	03	12	18
Oman	01	04	13	19	USSR	02	04	14	...
Pakistan	01	04	13	19	United Arab Em.	01	04	13	19
Panama	01	04	13	19	United Kingdom	01	04	12	18
Papua N. Guinea	01	04	12	18	U. Rep. Cameroon	02	04	13	19
Paraguay	...	04	14	20	U. Rep. Tanzania	01	04	12	18
Peru	01	03	13	19	United States	01	04	14	18
Philippines	01	04a/	13	19	Upper Volta	02	04
Poland	01	04a/	14	20	Uruguay	01	04	14	20
Portugal	01	04	13	19f/	Venezuela	01	03	13	19
Puerto Rico	01	04	Yemen	01	04	12	18
Romania	02	04	Yugoslavia	02	03	14	20
Rwanda	02	04a/	13	19	Zaire	01	04a/	14	20
Samoa	01	03	12	18	Zambia	01	04	13	19
Saudi Arabia	01	04	13	19	Zimbabwe	01	04	12	18
Senegal	...	04	13	19					
Seychelles	01	04	14	20					

* For footnotes and key to codes, see end of table.

(continued)

a/ Average number of persons engaged for one or more years.
b/ Valuation unknown for one or more years.
c/ Average number of employees for one or more years.
d/ Number of establishments for one or more years.
e/ Number of enterprises for one or more years.
f/ Valuation at factor values for one or more years.

Key to the codes shown in the table:

01 Number of establishments.
02 Number of enterprises.
03 Average number of persons engaged.
04 Average number of employees.
12 Gross output in factor values.
13 Gross output in producers' values.
14 Gross output, valuation unknown.
18 Value added in factor values.
19 Value added in producers' values.
20 Value added, valuation unknown.

