



TOGETHER
for a sustainable future

OCCASION

This publication has been made available to the public on the occasion of the 50th anniversary of the United Nations Industrial Development Organisation.



TOGETHER
for a sustainable future

DISCLAIMER

This document has been produced without formal United Nations editing. The designations employed and the presentation of the material in this document do not imply the expression of any opinion whatsoever on the part of the Secretariat of the United Nations Industrial Development Organization (UNIDO) concerning the legal status of any country, territory, city or area or of its authorities, or concerning the delimitation of its frontiers or boundaries, or its economic system or degree of development. Designations such as “developed”, “industrialized” and “developing” are intended for statistical convenience and do not necessarily express a judgment about the stage reached by a particular country or area in the development process. Mention of firm names or commercial products does not constitute an endorsement by UNIDO.

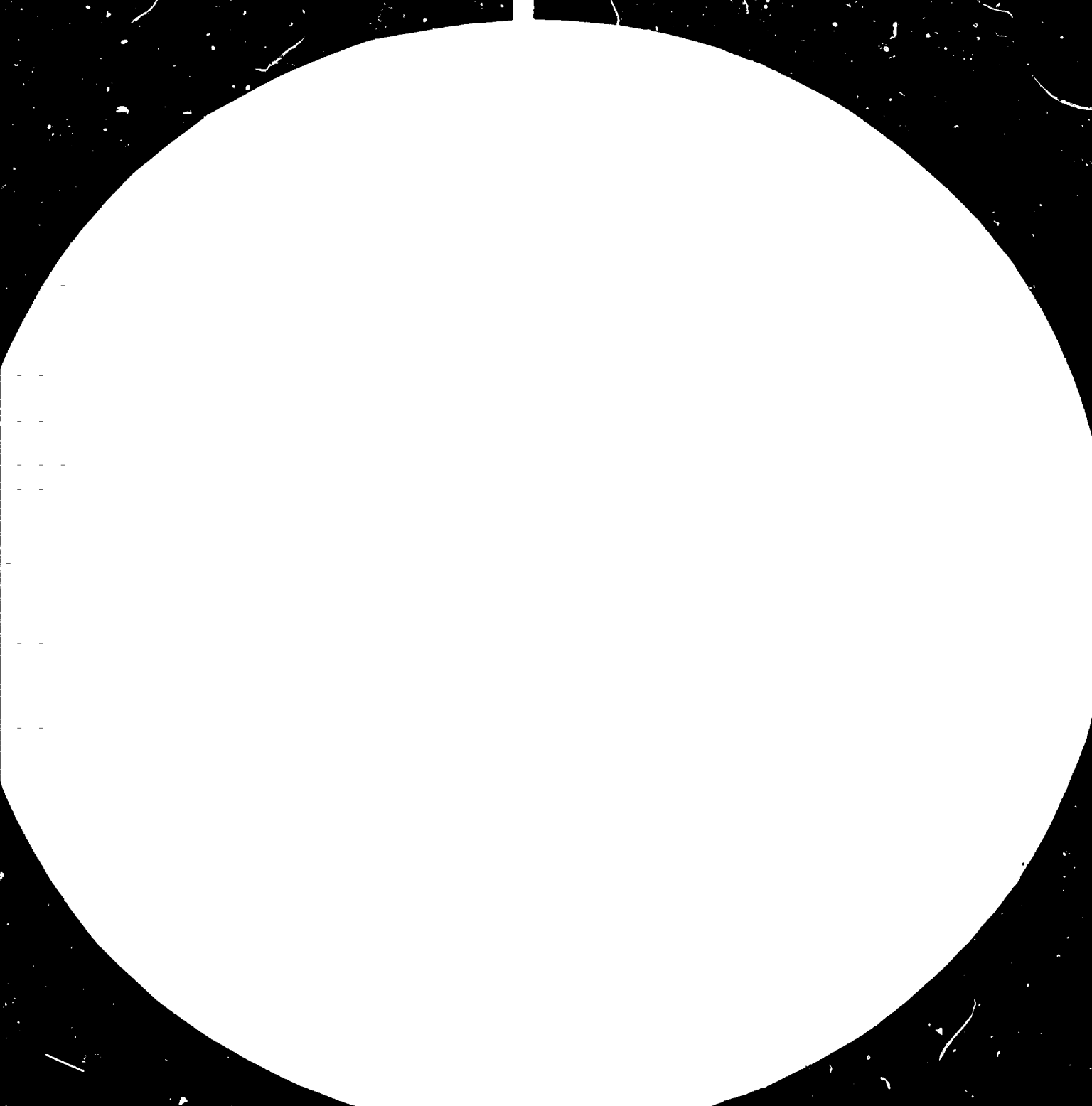
FAIR USE POLICY

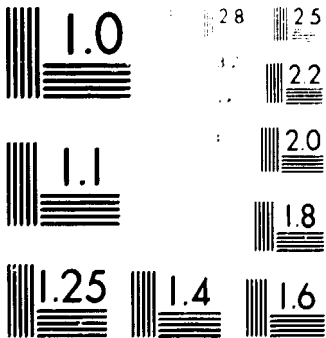
Any part of this publication may be quoted and referenced for educational and research purposes without additional permission from UNIDO. However, those who make use of quoting and referencing this publication are requested to follow the Fair Use Policy of giving due credit to UNIDO.

CONTACT

Please contact publications@unido.org for further information concerning UNIDO publications.

For more information about UNIDO, please visit us at www.unido.org





Micro Resolution Test Chart 1500 Line Pairs per Inch

1000

1000

1000

1000



11736



Distr.
LIMITED

ID/WG 382/4
1 October 1982

ORIGINAL: ENGLISH

United Nations Industrial Development Organization

High-Level Meeting on the Establishment of the
International Centre for Genetic Engineering
and Biotechnology,
Belgrade, Yugoslavia, 13-17 December 1982

CONSIDERATIONS RELATED TO THE LOCATION
OF THE INTERNATIONAL CENTRE FOR
GENETIC ENGINEERING AND BIOTECHNOLOGY*

prepared by
the UNIDO Secretariat

00 00 00

* This document has been reproduced without formal editing.

V.82-30939

C o n t e n t s

	<u>Page</u>
A. CRITERIA	1 - 2
B. LAND AND BUILDING REQUIREMENTS	2 - 3
C. EXPRESSION OF INTEREST	4
D. ACTION REQUIRED	5
 ANNEX I	
- Lay-Out	6 - 7

This document relates to the criteria for location of the International Centre for Genetic Engineering and Biotechnology (ICGEB), the physical facilities required and the offers made by governments for hosting the Centre.

A. CRITERIA FOR LOCATION

Even during the missions undertaken by the experts to prepare the report on the establishment of the Centre, interest was expressed in hosting the Centre by several countries. As a result, the experts in their report dealt with some aspects on the location of the Centre, as follows:

"The mission has been pleased to note that a large number of highly qualified scientists have expressed their willingness to participate in and devote some of their time to the activities of the Centre. However, the extent to which they actually do would depend on the location and facilities of the Centre. If well-known visiting scientists are to be encouraged to spend a year of sabbatical or more, the Centre would have to provide physical facilities that would be comparable to the ones the visiting scientists would leave. Also, the visiting scientists would be concerned with the availability of amenities, educational opportunities, etc., for their families. Experience with several international research centres shows that an agreeable environment can be attractive. Due attention should be given to these factors since the competition from industry for the best brains in genetic engineering is fierce.

The factors to be considered include:

- Basic infrastructure: access by air and surface travel, telecommunications, international contacts, electronic and instrument services, mechanical services, pilot plant facilities, reliability of water and power plant, customs facilities, etc.

- Industrial environment: contact with industry, universities and other R and D facilities.
- Social infrastructure: living costs, housing, climate and health environment, schooling, etc.
- National commitment at the governmental and academic levels; freedom to communicate and travel."

The mission considered that it would be presumptuous for it to make site recommendations after just a few days visit to each country. After the publication of the report of the experts, action has been taken by the UNIDO secretariat in two forms. Several countries, some of which have not been covered by the mission, were visited by the UNIDO secretariat and selected experts, at the request of the respective governments, in the course of which views were exchanged on the location of the Centre. Expressions of interest in hosting the Centre were also made in certain cases. Concurrently, the UNIDO secretariat requested a team of two experts, who had been members of the earlier mission, to visit some well-known genetic engineering and biotechnology laboratories and, based on such visits, suggest the requirements for the Centre in terms of land, buildings, workshops, laboratory planning, infrastructure, utilities, power, etc. The report of this team has provided information on essential requirements of physical facilities which would be of interest to those governments offering host facilities.

B. LAND AND BUILDING REQUIREMENTS

The expert team referred to above, suggested that the building complex of the Centre should consist of the following three sections:

1. Building I

The main building consists of four floors plus half a basement. It is expected that this building will house: administration, laboratories, combined lecture/small conference facility, cafeteria, library and maintenance workshops for electric and instrument services including storage facilities for spare parts, laboratory and chemical materials. It is estimated that each floor will require a total area of 27,720 ft.² except the basement which will only require an area of 14,000 ft.². A tentative lay-out of different floors is presented in Annex I.

2. Building II

Building II will house a fully instrumented pilot plant with an adjoining mechanical and maintenance workshop. It is recommended that this building be designed in a manner to allow the housing of the pilot plant at one large section and that the second section will include rooms for offices for the operating staff, laboratories and other auxiliary facilities necessary for pilot plant operation. The total area of approximately 16,000 ft.² will be required.

3. Building III

A green house with a total area of approximately 26,000 ft.²

In planning the landscaping surrounding the Centre, consideration also needs to be given to requirements, such as parking, some recreational facilities, including possible housing for international staff and particularly the premises for future expansion of the Centre building itself. It was recommended that a total land area of approximately 4,320,000 ft.² will be a reasonable requirement for establishing the Centre. Considering the nature of the Centre's activities, the building should have a central heating and airconditioning. At full operation the annual utility requirement will be as follows:

		<u>Units</u>
Steam	(Mlbs)	21,000
Water	(MCF)	3,500
Sewer	(MCF)	3,500
Electricity	(KWH)	3,000,000

C. EXPRESSIONS OF INTEREST

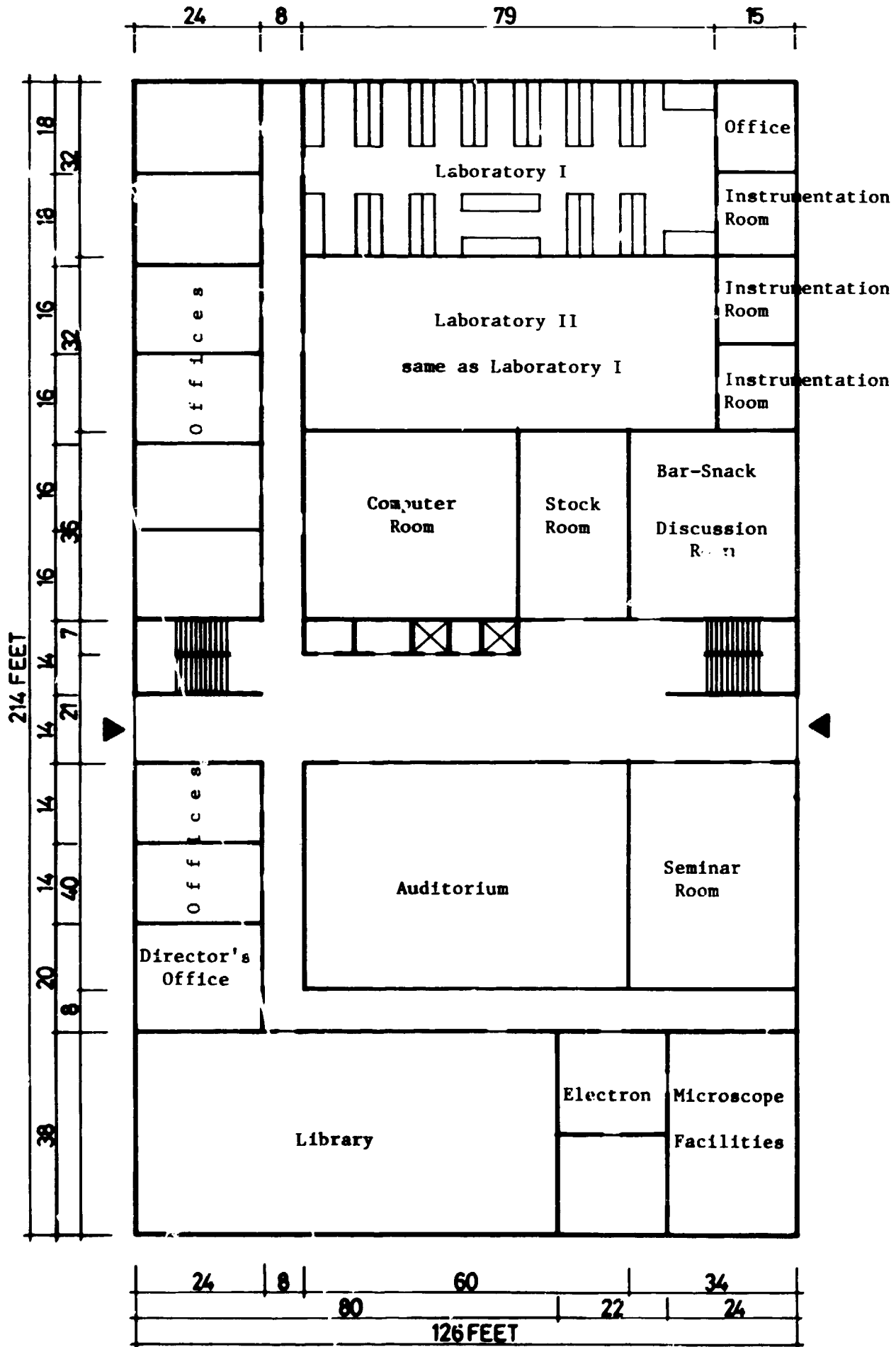
As stated earlier, expressions of interest in hosting the Centre were made by several countries even during the mission of experts to prepare the report on the establishment of the Centre. The experts considered that a major factor in favour of the establishment of the Centre and indeed its major asset was the uniform expression of interest and commitment in various countries visited. Subsequent to the publication of the report, expressions of interest were conveyed from several governments.

The level of contributions discussed by some governments with the UNIDO Secretariat has varied from one government to another. Some governments offered existing buildings to house the Centre, while others offered to construct new building complexes, designed specifically for this purpose. Some have indicated financial contributions in addition to building, land and equipment, to cover partly or fully the operational costs of the Centre. The UNIDO Secretariat would like to express its deep appreciation and gratitude for the generous offers made by these governments to establish this unique "centre of excellence" for the benefit of mankind. It is expected that some detailed written offers will be received and circulated before the high-level meeting.

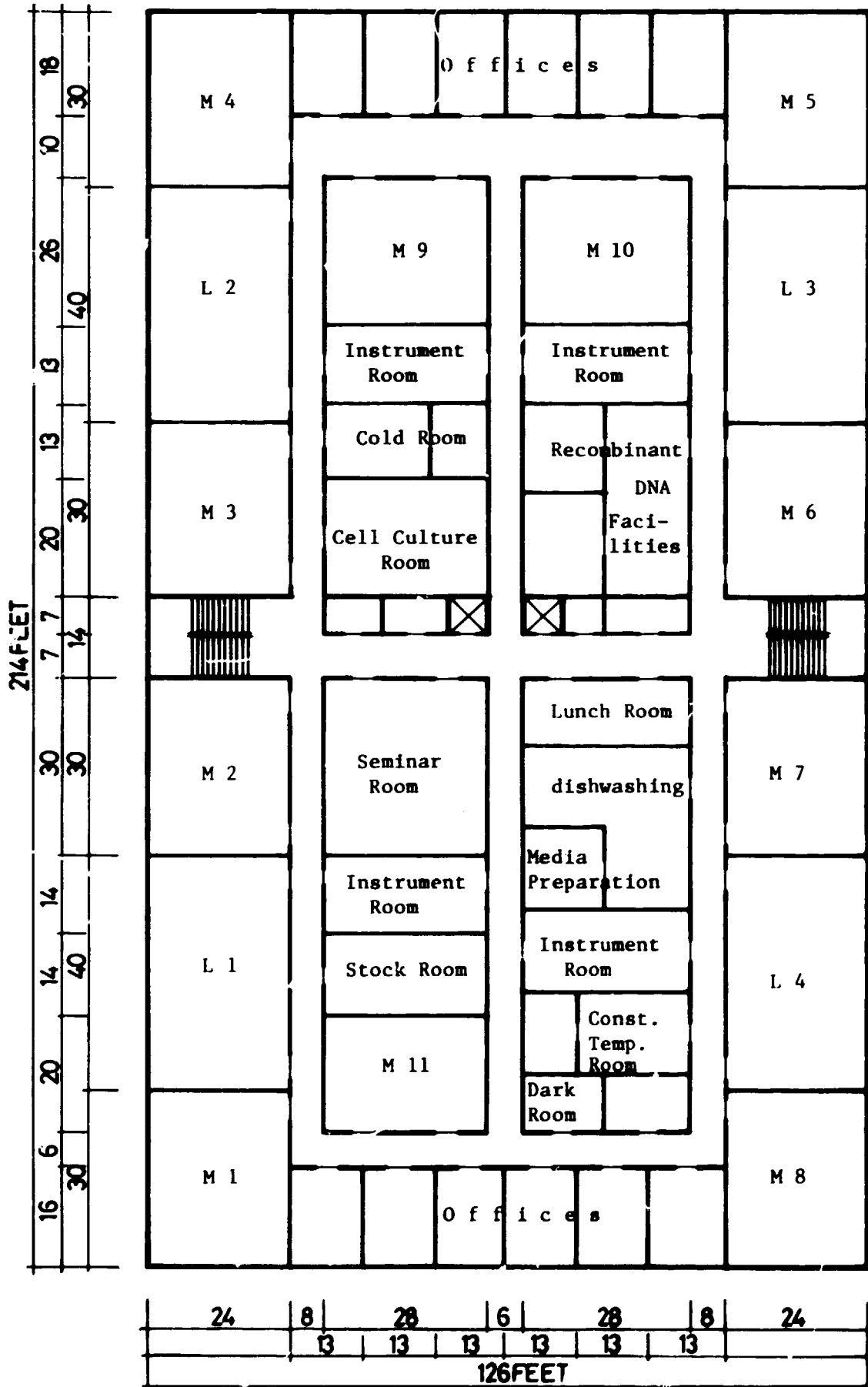
The final selection of the location of the Centre should be made, taking into account, inter alia, the criteria listed by the mission of experts and the physical facilities mentioned above. The Centre has to be located in a manner that would serve the basic objectives of its establishment as also its efficient operation.

D. ACTION REQUIRED

A meeting is required to consider the invitations for hosting the Centre and recommend a location to the ministerial-level meeting for its approval.



Floor 1 (Main floor): Building I



Floors 2-4: Building I

M - Medium Size Laboratory

L - Large Size Laboratory

