



**TOGETHER**  
*for a sustainable future*

## OCCASION

This publication has been made available to the public on the occasion of the 50<sup>th</sup> anniversary of the United Nations Industrial Development Organisation.



**TOGETHER**  
*for a sustainable future*

## DISCLAIMER

This document has been produced without formal United Nations editing. The designations employed and the presentation of the material in this document do not imply the expression of any opinion whatsoever on the part of the Secretariat of the United Nations Industrial Development Organization (UNIDO) concerning the legal status of any country, territory, city or area or of its authorities, or concerning the delimitation of its frontiers or boundaries, or its economic system or degree of development. Designations such as “developed”, “industrialized” and “developing” are intended for statistical convenience and do not necessarily express a judgment about the stage reached by a particular country or area in the development process. Mention of firm names or commercial products does not constitute an endorsement by UNIDO.

## FAIR USE POLICY

Any part of this publication may be quoted and referenced for educational and research purposes without additional permission from UNIDO. However, those who make use of quoting and referencing this publication are requested to follow the Fair Use Policy of giving due credit to UNIDO.

## CONTACT

Please contact [publications@unido.org](mailto:publications@unido.org) for further information concerning UNIDO publications.

For more information about UNIDO, please visit us at [www.unido.org](http://www.unido.org)

22946



# **FINAL REPORT**

**DP/SYR/92/009**

**Introduction of Computer Managed  
Maintenance Systems (CMMS)  
in the Syrian Industrial Sector**

**Amendment C**

**Contract N° 98/285**

Author : Loïc RUILLET

Version : 1.0

Date : 07 November 2003

# MODIFICATIONS

Version	Date	Comments
1.0	07/10/2003	Creation of the document by Loïc RUILLET – Project Manager

# CONTENTS

**1. INTRODUCTION ..... 4**

    1.1. Objectives ..... 4

    1.2. Maintenance ..... 4

**2. ANNEXES ..... 5**

    2.1. PROCES VERBAL D'INTERVENTION ..... 5

    2.2. TECHNICAL REPORT ..... 8

**3. END OF DOCUMENT ..... 16**

# 1. INTRODUCTION

## 1.1. Objectives

---

This document details the activities carried-out for the additional work as defined in Amendment C.

## 1.2. Maintenance

---

As defined in Amendment C, SIVECO shall provide one (1) year of full maintenance starting from 1 January 2004 for COSWIN Mobile solution.

HIASST and the four sites are covered by the Maintenance Contract and can be in contact with the SIVECO Technical Center, either by phone, mail or using the technical Web Site.

### SIVECO GROUP TECHNICAL CENTER

**Adresse :** Miniparc Euromédecine  
912, rue de la Croix Verte  
Batiment A  
34000 MONTPELLIER  
FRANCE

**Phone :** +33 499613800  
**Fax :** +33 499610045

**Email :** [sgmao@siveco.com](mailto:sgmao@siveco.com)  
**Web Site :** <http://www.tc.siveco.com>

## 2. ANNEXES

### 2.1. PROCES VERBAL D'INTERVENTION

---

Enclosed copy of documents used internally by SIVECO GROUP and signed jointly by HIAST and SIVECO GROUP.

Version: 1.0

Date: 07 November 2003



## PROCES VERBAL D'INTERVENTION

. VOTRE COMMANDE:	DU:
. REFERENCE SIVECO :	
. COMMERCIAL SIVECO:	PFO
. CLIENT :	UNITED NATIONS INDUSTRIAL DEVELOPMENT
. ADRESSE :	
. SITE D'INTERVENTION:	DAMASCUS - HIAST
. INTERLOCUTEUR CLIENT :	Mounira LATRECH / Alexander VARGHESE - UNIDO Bashir BRIZE - HIAST

. INTERVENANT SIVECO :	Loïc RUILLET
. DATES DE L'INTERVENTION:	10/10 to 15/10/2003
. NOMBRE DE JOURS EFFECTUES:	5
. CREDIT INSTALL:	AU:
. CREDIT FORMATION:	AU:
. NBR DE NUITS SUR PLACE:	

<b>OBJET DE LA MISSION SIVECO (résumé, voir détail ci-joint) :</b>
COSWIN MOBILE BY PDA (SIVECO offer reference PFO030514_01)

<b>REMARQUES SUR LE DEROULEMENT (Observations client, matériel livré ou prêté par siveco) :</b>
HIAST was installed with a COSWIN MOBILE demo license and the installation CD was not given to HIAST. 5 COSWIN MOBILE kit (CD + updated license) will be sent after the signature of the contract amendment.

<b>ANOMALIES CONSTATEES (Actions siveco/client, conclusion) :</b>
HIAST states that the task has been performed by SIVECO GROUP with the followings remarks or reserves:
- It was not possible to demonstrate the downloading of Stock Count from PDA to the database. An export of the HIAST training database was provided to SIVECO in order to allow the Technical Center to investigate the problem
- It was explained that in ADRA and AL-FURA SPINNING database, the material cost field of the WO is not informed. Since the probleme is not simulated in HIAST database or in version 6.1A, an export of ADRA database and the screen (CWRES) will be sent to SIVECO in order to allow the Technical Center to investigate the problem.

FAIT LE: 15/10/03  
Loïc RUILLET - Project Manager

Bashir BRIZE - National Project Director

Signature:

Signature:

Fichier: UNDP-98-286-REP-SI006



Page 6 of 16

15.10.2003





---

## 2.2. TECHNICAL REPORT

---

Planning defined for the PDA mission
--------------------------------------

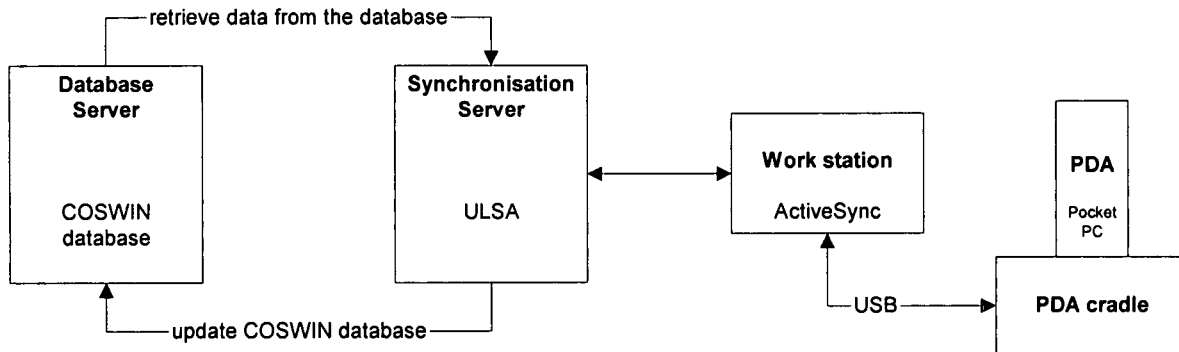
The planning defined for the PDA mission is the following:

- Installation of the COSWIN PDA solution
- Configuration of the COSWIN PDA solution
- Training on the COSWIN PDA solution
- Questions & Answers on the COSWIN PDA solution and / or COSWIN

The mission took place at HIAST from the 11/10 to 15/10/03.

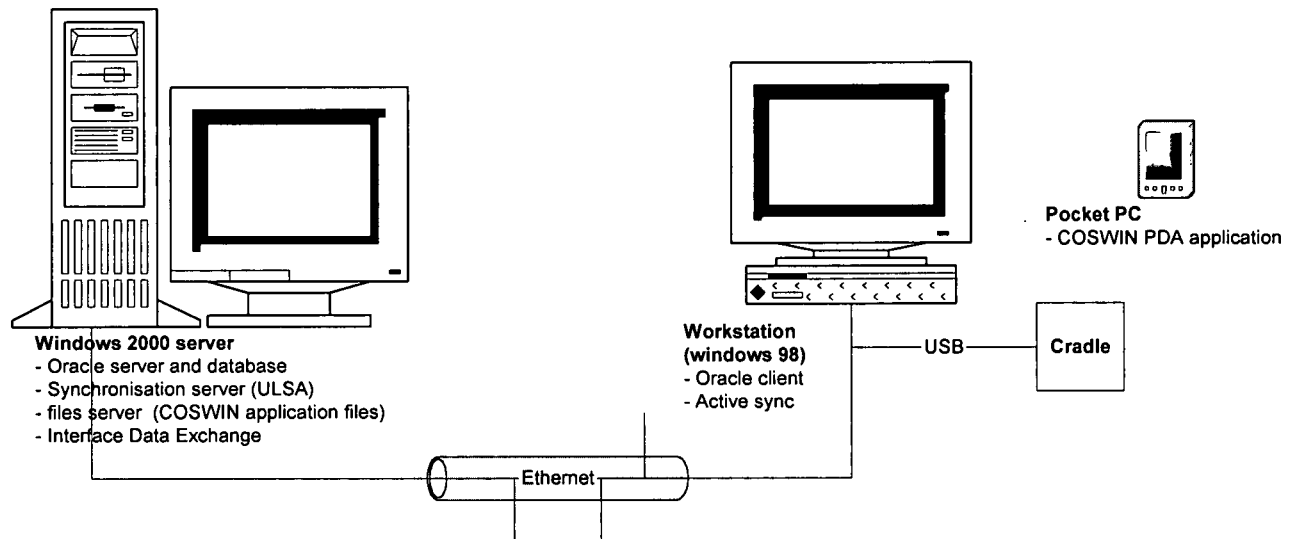
# Introduction

## 1. Overview of the COSWIN PDA solution



- The PDA exchange information with the workstation when plugged in the cradle via the USB port
- The work station connect to the synchronisation server based on the configuration defined for the PDA
- The synchronisation server:
  - Update the COSWIN database via Interface Data Exchange
  - Retrieve data from the database via SQL script

## 2. HIAST configuration



The configuration in HIAST is similar to the sites configuration.

Version: 1.0

Date: 07 November 2003

## Installation of the COSWIN PDA solution

### 1. Introduction

This chapter reminds the key point, full procedure was given to HIAST.

### 2. Installation of the programs

The programs are installed using SETUP.EXE

### 3. Configuration of the synchronisation server

It installed is pre-configured to be used with COSWIN PDA solution.

To finalise the settings, run ULSA programs (Start – Programs – COSWIN Interfaces - COSWIN Mobile (Server) 6.01 – ULSA – Ulsa Server)

#### 3a. Definition of the ODBC

This is done using the menu Server – Configuration- Import/Export and the ODBC driver (COSWIN Database) as well as the alias, user and password for the database access must be defined.

#### 3b. Modification of user, password

This is done using the menu Utilisateurs and this allow to add new users and modify the password.

#### Important:

- The path of the user directory must be changed to D:\ for each user.
- The file CONFIG.TXT must be manually modified with user id and password and copy as CONFIG.PDA in the PDA  
(see documentation for more information)

Version: 1.0

Date: 07 November 2003

### 3c. The communication sentinel

The communication sentinel is used to send and receive messages from the PDA. It needs to be started using the icon showed in the below screen capture.

**Remark:**

ULSA can be executed as services, this can be defined in Server – Configuration – Générale.

Service

<input type="checkbox"/> Utiliser ULSA en tant que service
--

In this case, the communication sentinel is started automatically.

### 4. Configuration of Interface Data Exchange programs

IDE is used to update the database based on the information received by ULSA.

It is just needed to enter once in IDE to enter "interfcs" password and the COSWIN database alias and schema.

Once this is done, the information are recorded in IDE INI file.

### 5. Installation and configuration of the PDA

#### 5a. Installation of Activesync

Activesync must be installed and configured on the workstation used to download the PDA. Activesync is a program provided by Microsoft which is enclosed on the CD that comes with the PDA. If needed, Activesync is provided on COSWIN Mobile PDA kit.

#### 5b. Installation of COSWIN Mobile client

Execute the program ppc20002.EXE if the PDA is running Pocket PC 2002.

The next time, the PDA will be connected to the PC, then the COSWIN Mobile client will be installed on the PDA.

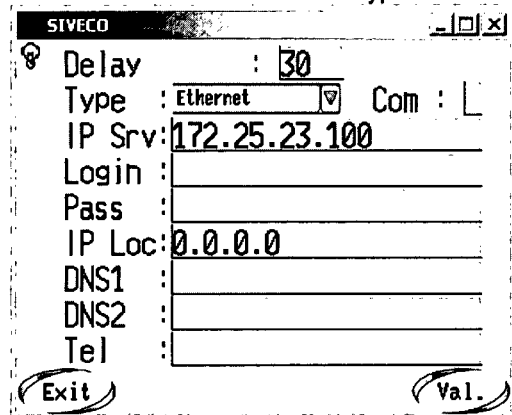
#### 5c. Configuration of the PDA

To finish the installation, the file CONFIG.TXT renamed as CONFIG.PDA must be copied to the PDA in COSWINMOBILE\ directory.

**6. Configuration of the connection between the PDA and ULSA**

On the PDA, the IP address of the synchronisation server must be defined in order to allow the PDA to communicate with ULSA.

This is done on the PDA with the menu PARAMETERS – SYNCHRONISATION. For USB connection, the connection must be defined as type "Ethernet" with the IP address or the name of the synchronisation server.



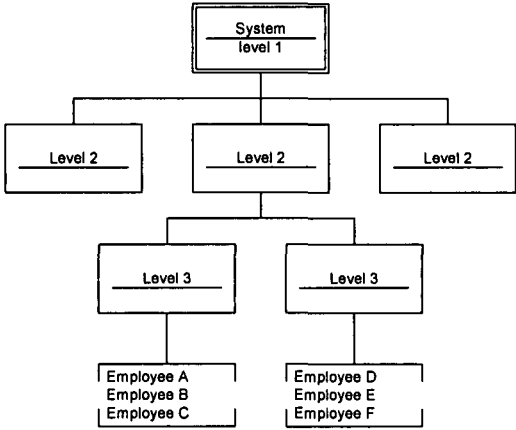
Version: 1.0

Date: 07 November 2003

<b>Additional technical discussions</b>
---

Some of the points were already discussed several times between HIAST, the sites and SIVECO.

Topics	Remarks	Status
Stock count	<p>It was not possible to demonstrate the downloading of Stock Count from PDA to the database.</p> <p>An export of HIAST training database was provided to SIVECO in order to allow the Technical Center to investigate the problem.</p>	OPEN
Material cost	<p>In Adra and Al-Fura Spinning database, it was noticed that the material cost field is not informed even if there is stock issue done.</p> <p>Since the problem cannot be re-simulated with HIAST database, SIVECO request to have a copy (full export) of the database as well the screen (CWRES) to re-simulate the problem and search for the reason.</p>	OPEN
Shutdown	<p>It was demonstrated how shutdown behaviour take into account the shutdown period defined in the calendar.</p> <p>However, the first date need to be initialised correctly when defining the job guidelines. The next occurrence are then computed by COSWIN taking into account:</p> <ul style="list-style-type: none"> <li>- Calendar</li> <li>- Duration</li> <li>- Min / Max interval</li> </ul>	CLOSED
Multiple stores to unique store	<p>This need to be done using Transfer, in order to move the existing item locations to the main store.</p> <p>It needs to be done item by item</p>	CLOSED
Actions feedback	<p>Feedback of actions was discussed with the different possibilities:</p> <ul style="list-style-type: none"> <li>- action by action</li> <li>- using auto-feedback option with option to update the status of several actions</li> </ul>	CLOSED
Employees belonging to a company	<p>In COSWIN, the employee tab shows only the employees linked to the entity and not the employees linked to the sub-entity.</p>	CLOSED

Topics	Remarks	Status
	 <pre> graph TD     L1[System level 1] --&gt; L2_1[Level 2]     L1 --&gt; L2_2[Level 2]     L1 --&gt; L2_3[Level 2]     L2_2 --&gt; L3_1[Level 3]     L2_2 --&gt; L3_2[Level 3]     L3_1 --&gt; E1[Employee A]     L3_1 --&gt; E2[Employee B]     L3_1 --&gt; E3[Employee C]     L3_2 --&gt; E4[Employee D]     L3_2 --&gt; E5[Employee E]     L3_2 --&gt; E6[Employee F]             </pre> <p>It was explained and demonstrated that a REPSTAR report can be done in order to list for a given level (e.g. level 2) the employees of the sublevel.</p>	
Production loss	<p>The need is to enter in the WO the amount of money lost because of the down time.</p> <p>The problem is that the field "Production Lost" is not long enough to store the amount.</p> <p>Two possibilities were explained:</p> <ul style="list-style-type: none"> <li>- use "Miscellaneous Cost" to store this value like this the production lost will be added to WO Cost. However, it is not advisable to mix production lost cost with maintenance cost</li> <li>- use a free numeric field with a label renamed as Production lost</li> </ul> <p>Both possibilities were illustrated. Possibility 2 should be selected since it allows to store the production cost if known and not to mix production lost cost with WO cost.</p>	CLOSED
Linked jobs	<p>The functionality was explained. It is used to trigger to be plan when the first job is finished</p>	CLOSED
Turbo feedback	<p>The functionality was explained. It is used to put in a given status (defined in Defaults) a list of selected Work Orders.</p>	CLOSED



# 3. END OF DOCUMENT

This page is intentionally left blank.