



**TOGETHER**  
*for a sustainable future*

## OCCASION

This publication has been made available to the public on the occasion of the 50<sup>th</sup> anniversary of the United Nations Industrial Development Organisation.



**TOGETHER**  
*for a sustainable future*

## DISCLAIMER

This document has been produced without formal United Nations editing. The designations employed and the presentation of the material in this document do not imply the expression of any opinion whatsoever on the part of the Secretariat of the United Nations Industrial Development Organization (UNIDO) concerning the legal status of any country, territory, city or area or of its authorities, or concerning the delimitation of its frontiers or boundaries, or its economic system or degree of development. Designations such as “developed”, “industrialized” and “developing” are intended for statistical convenience and do not necessarily express a judgment about the stage reached by a particular country or area in the development process. Mention of firm names or commercial products does not constitute an endorsement by UNIDO.

## FAIR USE POLICY

Any part of this publication may be quoted and referenced for educational and research purposes without additional permission from UNIDO. However, those who make use of quoting and referencing this publication are requested to follow the Fair Use Policy of giving due credit to UNIDO.

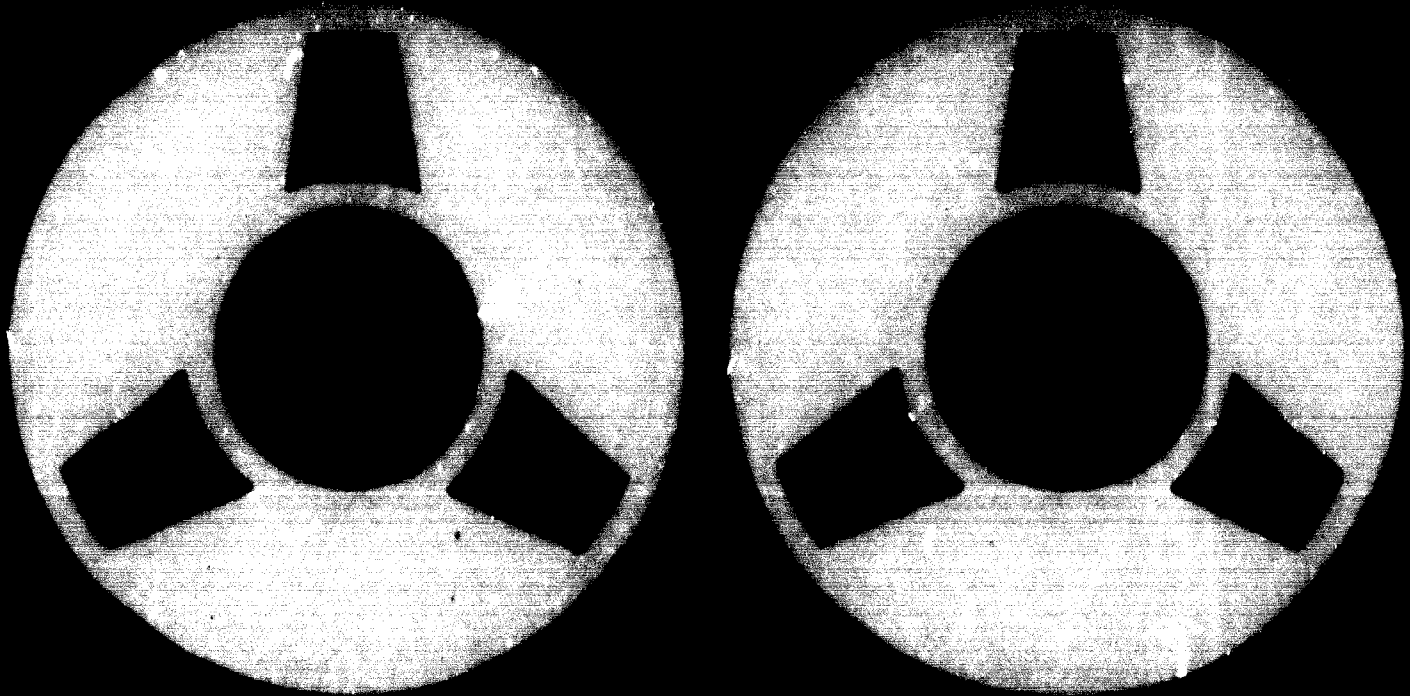
## CONTACT

Please contact [publications@unido.org](mailto:publications@unido.org) for further information concerning UNIDO publications.

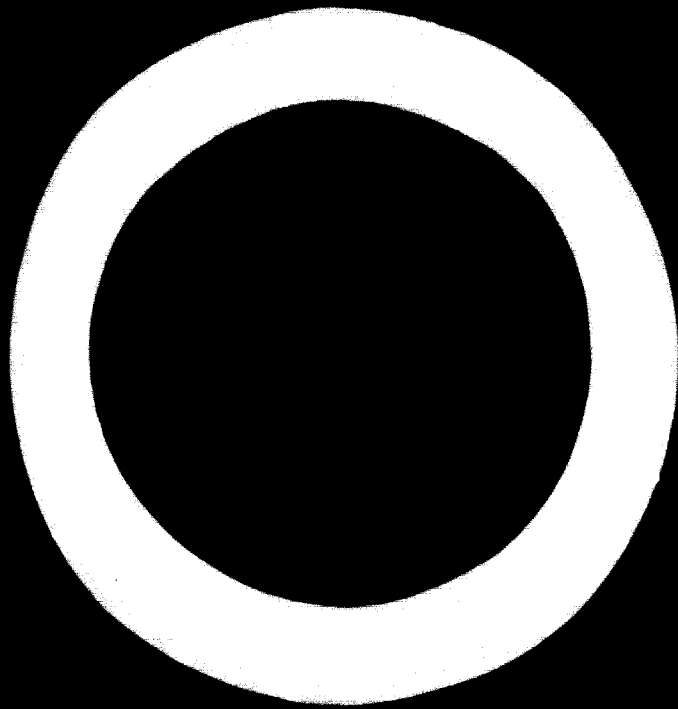
For more information about UNIDO, please visit us at [www.unido.org](http://www.unido.org)

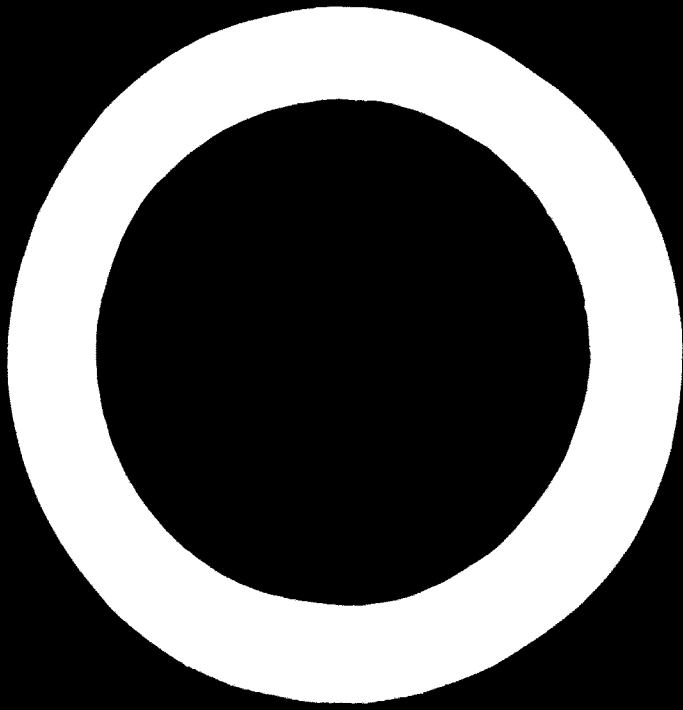
05248

# THESAURUS OF INDUSTRIAL DEVELOPMENT TERMS

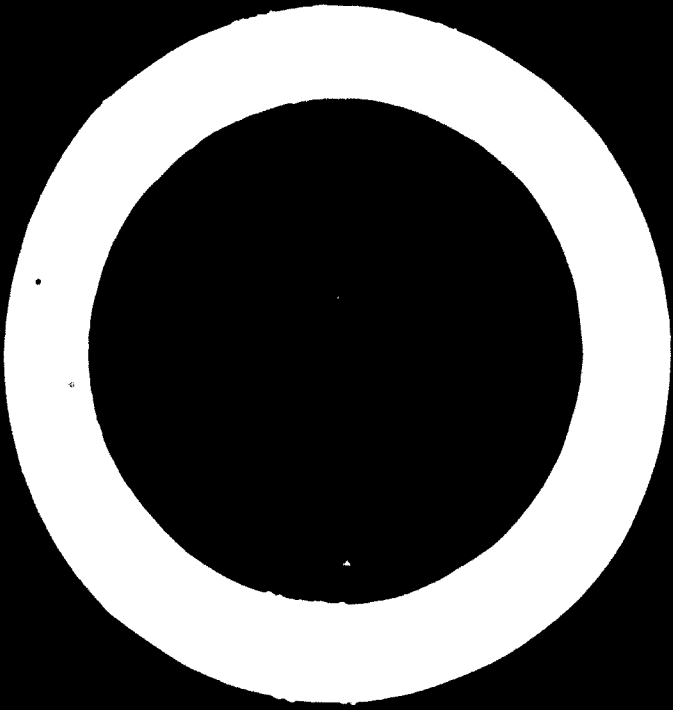


UNITED NATIONS





# THESAURUS OF INDUSTRIAL DEVELOPMENT TERMS



**UNITED NATIONS  
INDUSTRIAL DEVELOPMENT ORGANIZATION  
VIENNA**

# **THESAURUS**

# **OF INDUSTRIAL DEVELOPMENT TERMS,**

**No. 2**



**UNITED NATIONS  
New York, 1973**

The designations employed and the presentation of the material in this publication do not imply the expression of any opinion whatsoever on the part of the Secretariat of the United Nations concerning the legal status of any country or territory or of its authorities, or concerning the delimitation of its frontiers.

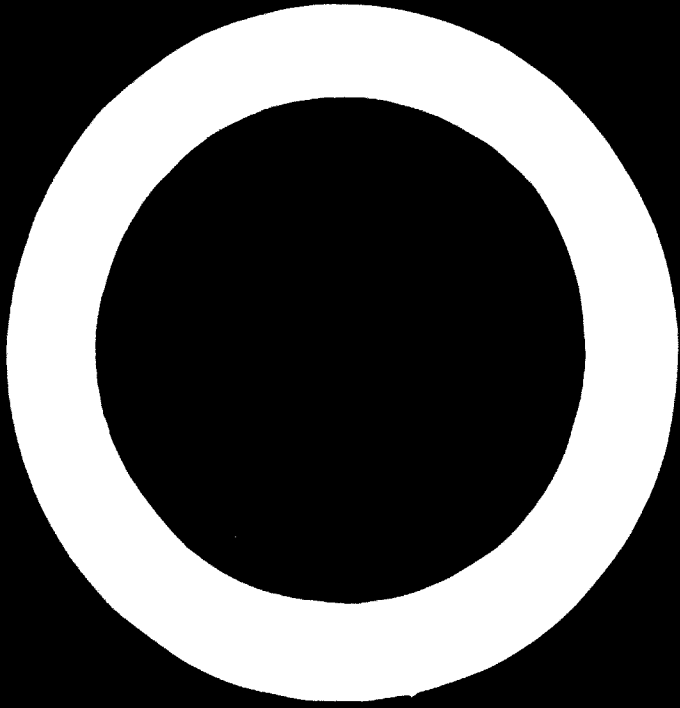
Material in this publication may be freely quoted or reprinted, but acknowledgement is requested, together with a copy of the publication containing the quotation or reprint.

UNIDO/LIB/SER.C/2



# CONTENTS

	<i>Page</i>
<b>INTRODUCTION</b> . . . . .	vii
<b>SYNOPSIS OF CLASSIFICATION</b> . . . . .	1
<b>CLASSIFIED LIST OF DESCRIPTORS</b> . . . . .	7
<b>PERMUTED ALPHABETICAL LIST OF DESCRIPTORS</b> . . . . .	103
<b>SUPPLEMENT 1: GEOGRAPHIC NAMES</b> . . . . .	197
<b>SUPPLEMENT 2: ROLE DESCRIPTORS</b> . . . . .	215
<b>SUPPLEMENT 3: NATIONAL AND INTERNATIONAL ORGANIZATIONS</b> . . . . .	219



# INTRODUCTION

The UNIDO Thesaurus of Descriptors comprises key words selected for indexing UNIDO documents. An international indexing system<sup>1</sup> was agreed upon by UNIDO, ILO, FAO, UNESCO, OECD and a number of other international and national organizations on the basis of a common *Aligned List of Descriptors*.<sup>2</sup> Since each of the organizations co-operating in the international indexing system uses a certain number of terms that are specific to its own work, it was agreed that a number of specialized or "peripheral" thesauri should be compiled and linked to the "core" of the *Aligned List of Descriptors* which lists a limited number of the more common terms.

The specialized Thesaurus of UNIDO, which has been built up over the past three years, is designed to serve the needs of the UNIDO Industrial Information System (INDIS).

As the descriptors are intended to appear in the text of a stylized abstract, all phrases are in the "natural" as opposed to the inverted order, e.g.: */international cooperation/* (not */cooperation, international/*).

Ambiguous terms are clarified by scope notes, SN, or simply by the context in which the descriptor appears in the abstract or in the classified portion of the Thesaurus.

## *Problems in classifying descriptors*

It should be noted, however, that a number of descriptors might equally appropriately appear in several different sections of the classification. Theoretically, there should be one "most general location" at which such descriptors could be entered, but in the simple *ad hoc* scheme used here, such a "most general location" may not exist. Thus, a choice must be made among specific locations. For example, */distilling/* appears with the chemical industries (3520) although equally applicable to the food and beverage industries (3140); and */genetic improvement/* appears with micro-organisms (3550), although equally applicable to livestock (3030).

---

<sup>1</sup> See "A Study of the Capacity of the United Nations Development System", Sir Robert Jackson, UN, Geneva, 1969. Vol. II, Chapter 6, p.238. paras. 69 and 70.

<sup>2</sup> Paris, OECD, 1969. For a new and revised edition, see "Macrothesaurus. A basic List of Economic and Social Development Terms", OECD, Paris, 1972.

At the other extreme are descriptors which do not fit readily into any part of the scheme. In most cases these have been placed in the section in which their presence would cause the least distortion. Some such placements may be accounted for by the explanation the child offered for his presence in the forbidden pantry: "everybody has to be somewhere". In one case only—*printing industry*—has a section been created for a single descriptor.

*Relationships between terms in the same section or between sections*

Relationships are assumed to exist (however tenuously) between terms in the same section, and between sections with the same first two numbers. Other relationships are shown as follows:

USE refers from a term that must not be used to the descriptor which may be used:

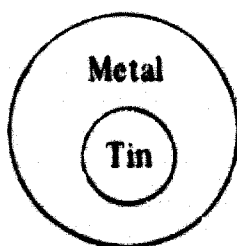
Gasoline USE Petrol

UF indicates "Use for":

Petrol

UF Gasoline

BT indicates "broader term". NT indicates "narrower term". BT is seen as including all of NT; conversely, NT is entirely covered by the relevant BT. In the sketch shown below, Metal is the "broader term" in relation to Tin, and Tin is, of course, the "narrower term" in relation to Metal:



The relation between the two terms is expressed in the Thesaurus as follows:

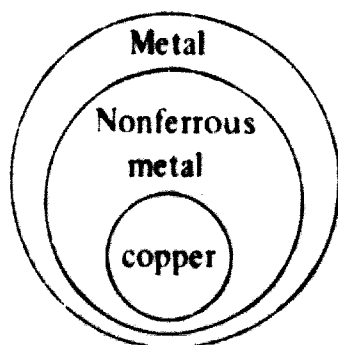
Metal

NT Tin

Tin

BT Metal

Relationships are shown only between a narrower term (NT) and the next broader term (BT) and vice versa. Thus, the Thesaurus will show only the next immediate relationship and *not* a relationship twice removed, for example:



*The Thesaurus shows:*

**Metal**

NT Nonferrous metal

**Nonferrous metal**

BT Metal

NT Copper

**Copper**

BT Nonferrous metal

*The Thesaurus does not show:*

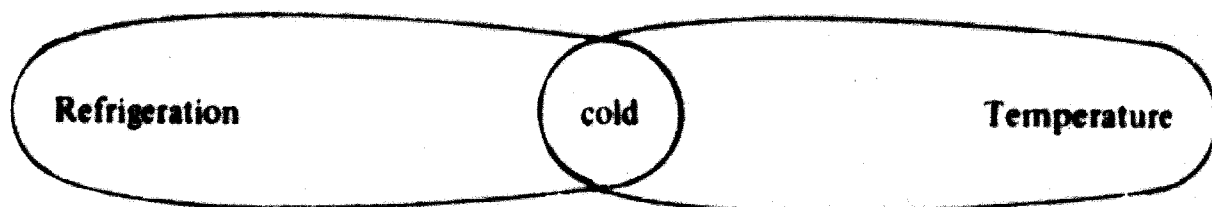
**Metal**

NT Copper

**Copper**

BT Metal

RT indicates "Related terms" i.e. terms that have some common areas:



*The Thesaurus shows:*

**Refrigeration**

RT Temperature

**Temperature**

RT Refrigeration

Sequences of terms, as in *raw material – industry – process – product* are not considered to be "Related terms" for the purpose of presentation in this Thesaurus.

The *Permuted Alphabetical List of Descriptors* provides a key to the classified portion of the Thesaurus only. It does not contain terms from the supplementary lists of *Geographic Names*, *Role Descriptors*, and *National and International Organizations*.

By its nature, a Thesaurus that is being used is never complete. New terms must be added and old ones changed or made more explicit by the addition of scope notes.

In this UNIDO Thesaurus, the provision of scope notes and the tracing of relationships has only begun. A number of errors and inconsistencies remain, to be corrected in successive editions.

This Thesaurus has been compiled by Mr. Jean Viet, Directeur du Service d'échange d'informations scientifiques de la Maison des Sciences de l'Homme, Paris, in his capacity as consultant to UNIDO, in co-operation with Mrs. Marianne Vespry, consultant to UNIDO on indexing processes and terminology.

# SYNOPSIS OF CLASSIFICATION

## INFORMATION, MEETINGS

- 0110 Meeting
- 0120 Information, Documentation (RT 2420)
- 0130 Data processing
- 0140 Types of documents, of information, of illustrations
- 0150 Reports
- 0160 Terminology

## RESEARCH, ANALYSIS, FORECASTING

- 0210 Research, Research institute (RT 2610)
- 0220 Mathematical analysis
- 0230 Forecast
- 0240 Time factor

## ENVIRONMENT, RESOURCES

- 1110 Geographic distribution, Economic geography (RT 1320, 1510)
- 1120 Natural resources, water utilization
- 1130 Environmental control

## SOCIAL DEVELOPMENT, PUBLIC HEALTH, EDUCATION

- 1210 Social change and development, population (RT 2310, 2820, 2830)
- 1220 Health, hygiene
- 1230 Nutrition (RT 3150)
- 1240 Education and training

## **INSTITUTIONAL FRAMEWORK, LAW**

- 1310 Institutional framework
- 1320 Level, centralization (RT 1110, 1510)
- 1330 Law

## **ECONOMIC ASPECTS, INDUSTRIAL DEVELOPMENT**

- 1410 Economic aspect
- 1420 Economic conditions
- 1430 Public finance, taxation
- 1440 Planned and market economies, public and private ownership (RT 2130)
- 1450 Studies and surveys
- 1460 Economic policy, planning, industrial development
- 1470 Economic administration, industrial services
- 1480 Development project

## **INTERNATIONAL COOPERATION, ASSISTANCE**

- 1510 International, bilateral, regional (RT 1110, 1320)
- 1520 International organizations, agreements
- 1530 Development assistance
- 1540 Development personnel, activities

## **TRADE, CURRENCY**

- 1610 Trade, trade policy
- 1620 Export, import
- 1630 Tariff, trade barrier
- 1640 Balance of payments, Currency

## **INDUSTRIAL SECTOR: ORGANIZATION, LOCATION OF INDUSTRY**

- 2110 Classification of industries
- 2120 Industrial sector
- 2130 Enterprise, ownership (RT 1440)
- 2140 Size of enterprise, economy of scale
- 2150 Integration, specialization, subcontracting



- 2160 Competition, profitability
- 2170 Cooperation
- 2180 Location of industry

## **MANAGEMENT**

- 2210 Management

## **LABOUR**

- 2310 Manpower (RT 1210)
- 2320 Employment
- 2330 Personnel
- 2350 Work study, working conditions
- 2360 Labour management relations
- 2370 Wage (RT 2830)

## **ENGINEERING, TECHNOLOGY, CAPACITY, PRODUCTIVITY**

- 2410 Engineering
- 2420 Technical information (RT 0120)
- 2430 Technology, technological change
- 2440 Capacity, productivity

## **FACTORY, PROCESSES, RAW MATERIALS, FINISHED GOODS, STANDARDS**

- 2520 Factory, Equipment
- 2520 Assembling, maintenance and repair, materials handling
- 2530 Raw material, product, waste
- 2540 Capital goods, consumer goods
- 2550 Production control
- 2560 Standards, standardization

## **PRODUCT DEVELOPMENT, INDUSTRIAL PROPERTY**

- 2610 Product development (RT 0210)
- 2620 Industrial property

## **COMMERCE, MARKETING, STOCK**

- 2710 Commerce, marketing (RT 2810)
- 2720 Stock
- 2730 Packaging

## **SUPPLY AND DEMAND, CONSUMPTION, PURCHASING POWER**

- 2810 Supply and demand, market (RT 2710)
- 2820 Consumer, consumption (RT 1210)
- 2830 Income, purchasing power (RT 1210, 2370)

## **FINANCIAL ASPECTS, CAPITAL, INVESTMENT, COSTS, PRICES**

- 2910 Financial aspect, Capital
- 2920 Investment
- 2930 Banks, credit, insurance
- 2940 Financial control
- 2950 Costs, costing
- 2960 Prices, pricing

## **PRIMARY SECTOR, AGRICULTURE**

- 3010 Primary sector
- 3020 Commercial farming
- 3030 Livestock
- 3040 Aquatic fauna

## **PLANT AND ANIMAL PRODUCTS, FOOD INDUSTRY**

- 3110 Plants, plant products (RT 3230, 3260)
- 3120 Animal products (RT 3240)
- 3130 Food industry
- 3140 Food technology, processes
- 3150 Food, food products
- 3160 Beverages
- 3170 Oil and fat, edible oil

## **WOOD, SPORTS GOODS, TEXTILES, LEATHER, RUBBER, TOBACCO, PRINTING**

- 3210 Wood, pulp and paper
- 3220 Furniture, sports goods
- 3230 Textile industry, fibres, clothing (RT 3110)
- 3240 Leather, shoes (RT 3120)
- 3250 Rubber industry
- 3260 Tobacco industry (RT 3110)
- 3270 Printing industry

## **CONSTRUCTION INDUSTRY, CERAMICS, GLASS**

- 3310 Construction industry, housing
- 3320 Building materials, cement industry
- 3330 Ceramics industry, refractory materials
- 3340 Glass

## **ENERGY, POWER, FUEL, PETROLEUM INDUSTRY**

- 3410 Energy, power
- 3420 Electric power
- 3430 Coal, fuel, gas
- 3440 Petroleum industry (RT 3530)

## **CHEMICAL INDUSTRIES**

- 3510 Chemical industry
- 3520 Physical and chemical processes, attributes, states
- 3530 Chemicals, petrochemicals, non-metallic minerals (RT 3440)
- 3540 Fertilizer industry, pesticides
- 3550 Biochemistry, Microbiology
- 3560 Pharmaceutical industry
- 3570 Plastics industry
- 3580 Chemical industry products

## **METALS INDUSTRIES**

- 3610 Metallurgy, metals industries
- 3620 Metals, ores
- 3620 Metals processing, foundry
- 3640 Metal products

## **METALWORKING INDUSTRY, MACHINERY**

3710 Metalworking industry, tools

3730 Machinery industry, machinery, equipment (RT 2510)

3740 Motor vehicles, bicycles

3750 Railroad trains, ships

3760 Precision machinery

## **ELECTRICAL AND ELECTRONICS INDUSTRIES**

3810 Electrical industry, electronics (RT 3910)

3820 Electrical industry products (RT 3910)

## **COMMUNICATIONS, TRANSPORT, TOURISM**

3910 Mass communication (RT 3810, 3820)

3920 Transport

3920 Tourism

## **MISCELLANEOUS PRODUCTS**

4010 Miscellaneous products

# CLASSIFIED LIST OF DESCRIPTORS

## INFORMATION, MEETINGS

### 0110 MEETING

#### Conf

**SN** —use *only* as indicated in para. 18 of *Guide Lines for the Formulation of Annotations for "International Labour Documentation (New Series)"*.

#### Meeting

**RT** Agenda  
List of documents  
List of participants  
Recommendation  
Resolution

#### Seminar

**RT** Agenda  
List of documents  
List of participants

### 0120 INFORMATION, DOCUMENTATION (RT 2420)

#### Classification system

**RT** Classification of industries

#### Clearing house

#### Documentation

0120 INFORMATION, DOCUMENTATION (RT 2420) (cont.)

Indexing

Information exchange

SN the exchange process.

Information service

Information storage and retrieval system USE Information system

Information system

UF Information storage and retrieval system

Network of correspondents

0130 DATA PROCESSING

Computer programme

Data bank

SN - a file of information available to the memory of a computer;/ with particular reference to files of statistical data collected during/survey/s.

Data collecting

RT Questionnaire

Data processing

NT Electronic data processing

Data recording

Electronic data processing

BT Data processing

0140 TYPES OF DOCUMENTS, OF INFORMATION, OF ILLUSTRATIONS

(Use to describe a document or part of a document; to indicate the *presence* of information of a certain type or form. These descriptors do not indicate that the *form* is being discussed.)

**Agenda**

RT Meeting  
Seminar

**Aide memoire**

SN --advance information for participants in a /meeting/.

**Bibliography**

**Diagram**

SN --do not include graphs; they are a form of /Statistics/.

**Directory**

**Factory layout**

RT Factory organization

**Flow chart**

SN --diagramatic representation of the relationship of a series of processes.

**Handbook**

**Inquiry service folder**

SN --filing folders of the UNIDO Industrial Inquiry Service.

**List of documents**

SN --list of the documents distributed to the participants in a /meeting/; do not confuse with general /Bibliography/s.

RT Meeting  
Seminar

**List of participants**

RT Meeting  
Seminar

**Map**

**Questionnaire**

RT Data collecting

**Recommendation**

SN --formal recommendations from a /meeting/ or an /expert/, not just any exercise in wishful thinking.

RT Meeting

0140 TYPES OF DOCUMENTS, OF INFORMATION, OF ILLUSTRATIONS (cont.)

Resolution

RT Meeting

Restricted

SN -- for documents access to which has been restricted by the issuing body or the receiving body.

Statistics

NT Production statistics

Summary

Summary record

Work programme

SN -- formal work programmes of UNIDO and other UN bodies.

0150 REPORT

Annual report

BT Report

Expert report

SN -- "final reports" of /expert/s which have not yet been formally accepted by UNIDO.

BT Report

Final report

BT Report

Mission report

BT Report

Report

NT Annual report  
Expert report  
Final report  
Mission report



## 0160 TERMINOLOGY

Definition

Glossary

Terminology

Translation

SN –the process of translating

## RESEARCH, ANALYSIS, FORECASTING

### 0210 RESEARCH, RESEARCH INSTITUTE (RT 2610)

Experiment

SN –a carefully controlled, formal experiment.

Experiment . . . USE Pilot project, Prototype if applicable.

Laboratory

Research

NT Industrial research  
Operational research

Research institute

Research programme

### 0220 MATHEMATICAL ANALYSIS

Input output analysis

SN –economic evaluation of linear formulas connecting levels of activity in various segments of an economy and prediction of the consequences of changes.

RT Economic analysis  
Interindustry relations

## 0220 MATHEMATICAL ANALYSIS (cont.)

### Input output table

SN -system of double entry bookkeeping which shows, for each sector of an economy during a given period, purchases from and sales to other sectors.

RT Interindustry relations

### Linear programming

SN -used to determine optimal solutions to various allocation etc. problems.

### Mathematical analysis

#### Model

SN -models for /research/ and /planning/. For models of new products, use /Prototype/.

Network analysis USE Systems analysis

### Operational research

BT Research

### Statistical analysis

### Systems analysis

UF Network analysis

## 0230 FORECAST

### Estimating

#### Forecast

SN -distinguish between /forecast/s (estimates) and /trend/s (tendencies).

#### Projection

SN -use only in connection with statistical data; otherwise use /Forecast/ or /Trend/ as applicable.

#### Trend

SN -distinguish between /trend/s (tendencies), /projection/s (from statistical data) and /forecast/s (estimates).

0240 TIME FACTOR

Long term

Medium term

Short term

Time factor

**ENVIRONMENT, RESOURCES**

1110 GEOGRAPHIC DISTRIBUTION, ECONOMIC GEOGRAPHY (RT 1320, 1510)

East

Economic geography

Economic region

Geographic distribution

SN —denoting presence or absence of various factors throughout a country or region.

North

Rural area

South

Tropical

Urban area

West

## 1120 NATURAL RESOURCES, WATER UTILIZATION

Desalinization

RT Salt

Mineral resources

BT Natural resources

Natural resources

NT Mineral resources  
Petroleum resources  
Power resources

BT Economic resources

Ocean USE Sea

River

Sea

UF Ocean

Soil

Water

RT Energy source

Water management

Water supply

Water utilization

## 1130 ENVIRONMENTAL CONTROL

Pest control

RT Insecticide  
Pesticide

Pollution control

Sanitation  
RT Hygiene

Sewage treatment

Waste disposal

Waste utilization

Water treatment

Weed control  
RT Herbicide

## **SOCIAL DEVELOPMENT, PUBLIC HEALTH, EDUCATION**

1210 SOCIAL CHANGE AND DEVELOPMENT, POPULATION (RT 2310, 2820,  
2830)

Area development

Community development

SN – the organization of all aspects of community living, in particular  
in respect to new settlement projects and the improvement of  
facilities in an existing community.

Land settlement

Population

RT Human resources

Public interest

RT Social cost

Refugee

**1210 SOCIAL CHANGE AND DEVELOPMENT, POPULATION (RT 2310, 2820  
2830) (cont.)**

**Rural development**

**Social**

**RT Social cost**

**Social aspect**

**Social change**

**Social service**

**Urban development**

**Urbanization**

**RT Housing**

**Urban transport**

**1220 HEALTH, HYGIENE**

**Family planning**

**Health**

**Hospital**

**Hygiene**

**RT Sanitation**

**Immunology**

**Public health**

**1230 NUTRITION (RT 3150)**

**Malnutrition**

**BT Nutrition**

**Nutrition**

- RT Amino acid
- Carbohydrate
- Food
- Protein
- Vitamin
- NT Malnutrition

Staple diet

**1240 EDUCATION AND TRAINING**

**Audio visual aid**

- BT Educational material

**Demonstration centre**

- NT Mobile demonstration workshop

**Education**

**Educational aspect**

**Educational material**

- NT Audiovisual aid

**Educational need**

**Educational policy**

**Fellowship**

**Further training**

- SN —for up-dating and up-grading a worker's knowledge and /skill/s.
- BT Training

**In plant training**

- BT Training

**Interplant training**

- SN —organized by several enterprises for joint training of staff.
- BT Training

**Management development**

- SN —developing managerial /skill/s through various programmes: /meeting/s, /seminar/s, information dissemination, etc.
- RT 2210

## 1240 EDUCATION AND TRAINING (cont.)

Mobile demonstration workshop  
BT Demonstration centre

Programmed instruction  
SN instruction using programmed material, either in textbook or teaching-machine usable form.

Retraining  
SN --to provide workers rendered obsolete by /technological change/ with new /skill/s for which there is a demand in the /labour market/.

Teaching

Technical education

Technical school

Technological institute

Training

NT Further training  
In plant training  
Interplant training  
Training abroad  
Vocational training

RT Training assistance

Training abroad

BT Training

Training centre

UF Training workshop

Training programme

Training workshop USE Training centre

Vocational training

BT Training



# INSTITUTIONAL FRAMEWORK, LAW

## 1310 INSTITUTIONAL FRAMEWORK

Administrative aspect

Administrative reform

Civil service

Constitution

Institutional framework

SN –comprises the totality of existing institutions and institutional links, laws and agreements potentially affecting any operation, venture, or project

Local government

SN –at the provincial, municipal, etc. level.

Public service

SN –services supplied by the government, e.g. /water/, /gas/, /electricity/, schools, /hospital/s, etc.

UF Public utility

Public utility USE Public service

Public works

SN –construction of public buildings, utilities, etc.

RT Construction industry

## 1320 LEVEL, CENTRALIZATION (RT 1110, 1510)

Centralization

Decentralization

Local level

National level

Regional level

1330 LAW

Contract  
SN preparing or entering into legally binding contracts.

International law  
BT Law

Law  
NT International law  
Patent law

Legal aspect

Legislation

Regulation

SN - official regulations, i.e. /law/s and /regulation/s governing ...  
NOT ... valves for /regulation/ of flow ...

## ECONOMIC ASPECTS, INDUSTRIAL DEVELOPMENT

### 1410 ECONOMIC ASPECT

Economic aspect

Economic implication

Economic information

Industrial economics

SN - the science of economics as it relates to the industrial sector.

Macroeconomics

Microeconomics

## 1420 ECONOMIC CONDITIONS

Developed country

UF Industrialized country

Developing area

SN an area now developing within a generally /developed country/.

Developing country

NT Least developed country

Development potential

SN --of a country, region, or an industry.

Economic conditions

UF Economic situation

Economic development

NT Industrial development

Economic growth

NT Industrial growth

Economic resources

NT Natural resources

RT Allocation of resources

Economic situation USE Economic conditions

Economic structure

SN --relative importance of various sectors of the economy.

Gross national product

Industrialized country USE Developed country

National economy

Least developed country

SN --use only for papers specifically using this term in discussing the problems of such countries

BT --Developing country

National income

SN --net earnings (as opposed to /gross national product/).

## 1430 PUBLIC FINANCE, TAXATION

Fiscal policy

BT Economic policy

National budget

Public finance

SN –the finances of the state, including /fiscal policy/s, /taxation/, etc. For /financing/ of industry etc. from public funds, USE /public financing/.

Tax

NT Turnover tax

Tax agreement

RT Bilateral agreement

Tax exemption

Tax incentive

BT incentive

Taxation

Turnover tax

BT Tax

## 1440 PLANNED AND MARKET ECONOMIES; PUBLIC AND PRIVATE OWNERSHIP (RT 2130)

Communist country USE Socialist country

Market economy

Mixed economy

Planned economy

Private sector

RT Private enterprise

Public ownership

RT Nationalization

Public sector

Socialist country

UF Communist country

State participation

## 1450 STUDIES AND SURVEYS

Case study

Comparative study

SN —comparing a given situation in two or more countries.

Economic analysis

RT Input output analysis

Economic survey

BT Survey

Feasibility study

Industrial development survey

BT Survey

Preinvestment survey

BT Survey

Survey

SN —collecting data on a given topic through interviews, /questionnaire/s, etc. Do not use for land or /natural resources/ surveys, or in the sense of a general overview.

NT Economic survey  
Industrial development survey  
Preinvestment survey

## 1460 ECONOMIC POLICY, PLANNING, INDUSTRIAL DEVELOPMENT

Allocation of resources

Development plan

SN --use /national plan/ if applicable.

Development planning

BT Planning

Development policy

Domestic production

SN --use only for papers discussing merits of /domestic production/  
as against /import/ of a given commodity or product.

Economic planning

BT Planning

Economic policy

NT Credit policy  
Fiscal policy  
Industrial policy  
Investment policy  
Monetary policy  
Price policy  
Trade policy  
Wage policy  
BT Government policy

Government policy

NT Economic policy

Import substitution

Industrial development

BT Economic development

Industrial growth

BT Economic growth

Industrial planning

BT Planning

## **Industrial policy**

- SN** – /government policy/ toward existing industry and the /establishment of new industry/.
- BT** Economic policy
- NT** Industrialization policy

## **Industrialization**

- RT** Establishment of new industry

## **Industrialization policy**

- BT** Industrial policy

## **Interindustry relations**

- SN** –flows of goods and services between and among various industries.
- RT** Input output analysis  
Input output table

## **International division of labour**

- SN** –theory and practice of international /planning/ and agreements by which countries specialize in the production of those commodities for which they have the greatest comparative advantage.

## **National plan**

## **National planning**

- BT** Planning

## **Nationalization**

- RT** Public ownership

## **Planning**

- NT** Development planning  
Economic planning  
Industrial planning  
National planning  
Regional planning

## **Regional planning**

## 1470 ECONOMIC ADMINISTRATION, INDUSTRIAL SERVICES

Agricultural extension

Chamber of commerce

Chamber of industry

SN –analogous to and often combined with /Chamber of commerce/; may be at least partially state supported; aims include /management development/ and advising the government on policies likely to foster the growth of the economy in general and their interests in particular.

RT Manufacturers association

Common service

SN –as provided on /industrial estate/s for the use of all industries located there, e.g. /tool/ rooms, /heat treatment/ facilities, /testing/ services, /maintenance and repair/ services, etc.

Economic administration

NT Industrial administration

Establishment of new industry

RT Industrialization

Handicraft promotion

Incentive

NT Profit sharing  
Tax incentive  
Wage incentive

Industrial administration

UF Ministry of industry

SN –at the government level. At the plant level, use /industrial management/.

BT Economic administration

Industrial development agency

SN –national or regional body in charge of /industrial development/.

RT Development centre



### Industrial estate

SN An /industrial area/ with services—roads, /water/, power, etc. provided; possibly also subsidized buildings and /common service/s; may also have an /industrial extension/ scheme.

RT 2180

### Industrial extension

SN —a programme for bringing new developments and techniques to the attention of managers and entrepreneurs, through seminars, visits by experts, information dissemination, etc.

### Industrial institution

SN —all types of institutions falling within the scope of UNIDO's activity. Use a more specific descriptor if possible.

### Industrial programming

SN —methodological aspects of /industrial planning/, on a regional or national basis.

### Industrial promotion

### Industrial service

SN —what /industrial institution/s provide. Use a more specific descriptor if possible.

### Industrial subsidy

RT Export subsidy  
Price support

Ministry of industry USE Industrial administration

### Public relations

## 1480 DEVELOPMENT PROJECT

Choice of project USE Project selection

### Counterpart

NT Counterpart personnel

## 1480 DEVELOPMENT PROJECT (cont.)

### Development project

SN --if applicable use /industrial project/, and indicate if UN assistance is involved.

NT Industrial project  
Joint project  
Multipurpose project

RT Aid project

### Industrial project

BT Development project

### Joint project

SN --involving two or more international agencies.

### Local cost

SN --the part of the project cost which is born locally; usually land, buildings, /counterpart personnel/ salaries, etc.

RT Government contribution

### Multipurpose project

BT Development project

### Pilot project

UF Experimental . . .if applicable

### Plan of operation

SN --Use in connection with UN projects.

### Project authorization

### Project design

SN --preparation of blueprints, estimates, etc., for a project: includes construction, equipment, process design, costs, manpower aspects, etc.

### Project evaluation

### Project implementation

Project manager

Project request

SN – request from a government to an international agency to set up a project.

Project selection

UF Choice of project

## **INTERNATIONAL COOPERATION, ASSISTANCE**

### **1510 INTERNATIONAL, BILATERAL, REGIONAL (RT 1110, 1320)**

**Bilateral**

**International**

SN – use in connection with relations *between* countries; *not* to indicate that a study of a particular subject is world wide in scope.

**Interregional**

SN – multicountry regions.

**Multilateral**

**Regional**

### **1520 INTERNATIONAL ORGANIZATIONS, AGREEMENTS**

**Bilateral agreement**

RT Tax agreement  
Trade agreement

**Common market**

RT Customs union

**Economic integration**

RT Customs union

## 1520 INTERNATIONAL ORGANIZATIONS, AGREEMENTS (cont.)

Economic relations

Intergovernmental organization

BT International organization

International cooperation

International organization

NT Intergovernmental organization  
Nongovernmental organization

International relations

Member country

Membership

SN -for a country in an /international organization/, /common market/, etc.

Nongovernmental organization

BT International organization

Regional agency

Regional cooperation

Treaty

RT Trade agreement

## 1530 DEVELOPMENT ASSISTANCE

Aid institution

SN -institutions providing primarily financial aid.

RT Development bank  
Industrial development agency

Aid project

SN -tends to imply /bilateral/ aid. UNIDO work falls more in the field of /technical assistance/ projects; but see also /development project/. /industrial project/.

Development assistance

- NT Economic assistance
- Private aid
- Technical assistance
- Training assistance

Development centre

- RT Industrial development agency

Economic assistance

- NT Financial assistance
- BT Development assistance

Financial assistance

- BT Economic assistance

Foreign aid

- SN – aid from the viewpoint of the donor country.

Government contribution

- SN – toward the costs of a project.
- RT Local cost
- Public financing

Industrial assistance USE Technical assistance

Private aid

- SN – from churches, foundations, etc.
- BT Development assistance

Second development decade

Technical assistance

- UF Industrial assistance
- BT Development assistance

Training assistance

- BT Development assistance

Voluntary contribution

- SN – from various countries to U.N. agencies.

## 1540 DEVELOPMENT PERSONNEL ACTIVITIES

Consultant

Counterpart personnel

SN    local counterparts of international staff.

BT    Counterpart

Development personnel

Expert

Field activity

SN    of international staff, as opposed to headquarters duties.

Field advisor

## TRADE, CURRENCY

### 1610 TRADE, TRADE POLICY

Foreign trade

SN    from the point of view of a specific country.

BT    Trade

Foreign trade information

Trade

SN    international trade only; for activity within one country use /commerce/.

UF    World trade

Trade agreement

RT    Bilateral agreement

RT    Treaty

Trade policy

- NT Customs policy
- Tariff policy
- BT Economic policy

Trade regulation

- RT Trade barrier

Trade volume

- NT Export volume
- Import volume

World trade USE Trade

1620 EXPORT, IMPORT

Balance of trade

Capital export

- SN —export of capital goods.

Export

Export promotion

- NT Trade fair

Export subsidy

- RT Industrial subsidy
- Price support

Export value

- SN — ... /export value/ of /glove/s from /Freedonia/ was \$1,000,000 in 1933.

Export volume

- SN — ... /export volume/ of /sugar/ from /Freedonia/ was 1,000,000 tons in 1933.
- BT Trade volume

Exporters association

- RT Manufacturers association

## 1620 EXPORT, IMPORT *(cont.)*

Import

Import volume

BT Trade volume

Reexport

## 1630 TARIFF, TRADE BARRIER

Customs policy

BT Trade policy

Customs union

RT Common market

Import restriction

BT Trade barrier

Preferential tariff

BT Tariff

Protectionism

Quota

Tariff

NT Preferential tariff

BT Trade barrier

Tariff policy

BT Trade policy

Trade barrier

RT Trade regulation

NT Import restriction  
Tariff

Trade liberalization



## 1640 BALANCE OF PAYMENTS, CURRENCY

Balance of payments

Convertibility

Currency

UF Money

NT Nonconvertible currency

Export of capital

SN —transferring earnings or original investments outside the country.

Foreign exchange

Foreign investment

BT Investment

RT Foreign owned

Inflation

Monetary policy

Money USE Currency

Nonconvertible currency

BT Currency

## **INDUSTRIAL SECTOR, ORGANIZATION, LOCATION OF INDUSTRY**

### 2110 CLASSIFICATION OF INDUSTRIES

Classification of industries

RT Classification system

Industry profile

## 2120 INDUSTRIAL SECTOR

Export oriented industry

Heavy industry

Industrial sector

SN -includes /manufacturing/, /mining/, /electric power/, construction and /service industry/s.

Industry\*

RT Industrial engineering

Light industry

Manufacturing

SN -use to describe the whole manufacturing segment of the /industrial sector/, including processing (as in the chemical and metallurgical industries) but excluding /mining/, /electric power/, construction and /service industry/s. DO NOT USE FOR ... /manufacturing/ of /glove/s in /Freedonia/ ...

Mining

Service industry

NT Hotel industry

## 2130 ENTERPRISE, OWNERSHIP (RT 1440)

Enterprise

NT Industrial enterprise  
Multinational enterprise  
Private enterprise  
Public enterprise

Foreign owned

RT Foreign investment

---

\*Probably not a useful descriptor—avoid if possible.

**Industrial enterprise**

**BT Enterprise**

**International enterprise USE Multinational enterprise**

**Joint venture**

**SN** – a venture carried out by at least one foreign /enterprise/ and one local enterprise.

**Multinational enterprise**

**SN** – /enterprise/s active in several countries, e.g. IBM, Shell.

**UF International enterprise**

**BT Enterprise**

**Nationalized industry**

**RT Public sector**

**Private enterprise**

**BT Enterprise**

**RT Private sector**

**Public enterprise**

**BT Enterprise**

**RT Public sector**

## **2140 SIZE OF ENTERPRISE, ECONOMY OF SCALE**

**Cottage industry**

**Economy of scale**

**SN** – reduction of unit production costs attendant upon larger /production capacity/s.

**RT Production capacity**

**Handicraft**

**Rural industry**

**Size of enterprise**

**Small scale industry**

## 2150 INTEGRATION, SPECIALIZATION, SUBCONTRACTING

Diversification

Industrial integration

NT Vertical integration

Merger

Monopoly

Oligopoly

Specialization

SN –in a few products or product groups.

Subcontracting

Vertical ingegration

BT Industrial integration

## 2160 COMPETITION, PROFITABILITY

Competition

Competitive

SN –when a process is competitive, or a factory is in a competitive position.

Competitive product

BT Product

RT Choice of product

Profit

Profitability

## 2170 COOPERATION

Cooperation

Cooperative

- NT Industrial cooperative
- Marketing cooperative
- Production cooperative

Industrial cooperative

- BT Cooperative

Marketing cooperative

- BT Cooperative

Production cooperative

- BT Cooperative

## 2180 LOCATION OF INDUSTRY (RT Industrial estate)

Factory location USE Location of industry; Site assessment

Free zone

- SN —includes provisions similar to those of an industrial estate, in addition to those of a free port.

Industrial area

- SN —an area with a relatively high /industrial concentration/, either planned or unplanned.

Industrial concentration

- SN —in the geographical sense, concentrated in one area.

Industrial location USE Location of industry

Infrastructure

Location of industry

- UF Industrial location
- Factory location

- SN —decision made in the light of available /infrastructure/, /raw material/s, /labour/, etc., to locate in a particular area.

- NT Relocation of industry

## 2180 LOCATION OF INDUSTRY (RT Industrial estate) *(cont.)*

Relocation of industry

BT Location of industry

Site assessment

SN –evaluation of available sites within the particular area chosen for the location of the industry.

UF –Factory location

# MANAGEMENT

## 2210 MANAGEMENT (RT (Management development))

Business management

BT Management

Decision making

Entrepreneur

Entrepreneurship

Evaluation

Factory organization

SN –planning of work within a production plant.

RT Factory layout

Industrial consulting

Industrial management

BT Management

Industrial relations USE Labour relations

Labour relations

UF Industrial relations

Management

NT Business management

Industrial management

Management consulting

Management information system

Management technique

Manager

Manufacturers association

SN --may be organized on a geographical or trade basis, to represent the interests of the member group.

RT Chamber of industry  
Exporters association

Methodology

Organizational aspect

Systems design

Work organization

SN --what tasks are necessary? who shall do them? with what? when?

Working plan

SN --for UN projects use /Plan of operation/.

## LABOUR

### 2310 MANPOWER (RT 1210)

Brain drain

Human resources

SN --the actual work force (/manpower/) plus the potential work force.

RT Population

2310 MANPOWER (RT 1210) (cont.)

Labour

SN use only for documents of a general nature, such as textbooks, Ministry of Labour gazettes, etc.; /Bibliography/ on /labour/ questions . . . .

Labour market

Labour mobility

Labour shortage

SN --lack of people to fill jobs.

Manpower

SN --the actual work force, in a country or region.

Manpower need

SN --general demand for labour, or demand in particular industries or sectors of the economy.

2320 EMPLOYMENT

Employment

Employment policy

SN --/government policy/ or the personnel policy of the individual /enterprise/.

UF Manpower policy

Job description

Manning table

Manpower policy USE Employment policy

Recruitment

SN --policies and procedures for seeking qualified employees.

Skill

Unemployment



## 2330 PERSONNEL

Employee

SN all persons employed for wages.

Engineer

BT Technical personnel

Foreign skilled personnel

SN -employed by a local /enterprise/ or branch of an /international enterprise/, as opposed to UN personnel, consultants, etc.

Instructor

Manual worker

Migrant worker

SN -one who moves for work purposes within a country or to another country.

Rural worker

Skilled worker

Supervisor

Technical personnel

NT Technician  
Engineer

Technician

SN -with more technical knowledge than a /skilled worker/, but less than an /engineer/.

BT Technical personnel

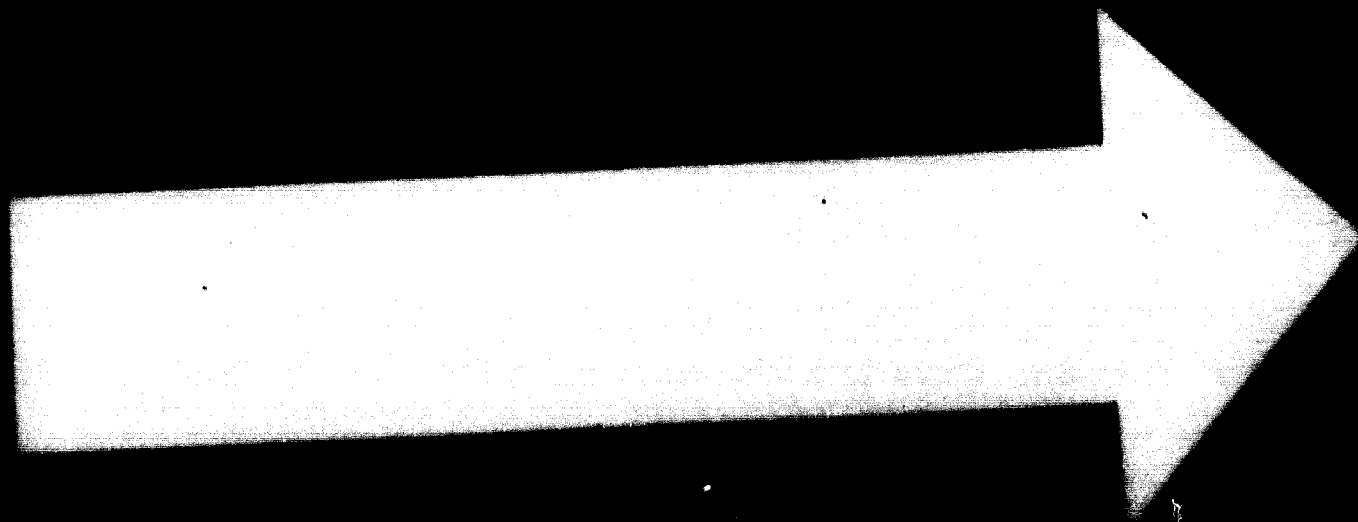
Unskilled worker

Worker

## 2350 WORK STUDY, WORKING CONDITIONS

Industrial safety

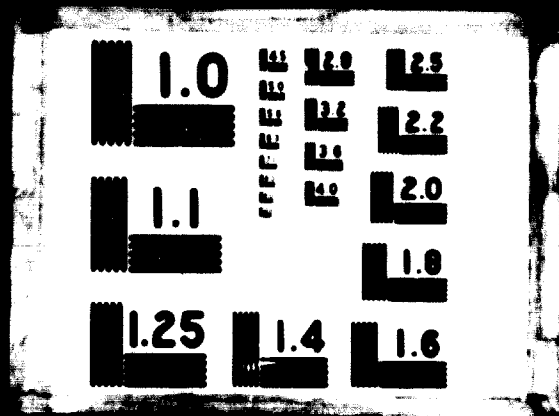
Job evaluation



**74.09.23**

2 OF 5

05248



## 2350 WORK STUDY, WORKING CONDITIONS *(cont.)*

Shift work

Time study

BT Work study

Work study

SN —detailed examination of the manner in which a particular job is performed, with a view to rationalizing the performance and so increasing /productivity/.

NT Time study

Working conditions

## 2360 PROFESSIONAL ORGANIZATION, TRADE UNION

Professional organization

SN —organized societies of professional workers which are not considered to be /trade union/s.

Trade union

## 2370 WAGE (RT 2830)

Industrial wage

SN —as opposed to agricultural /wage/, etc.

BT Wage

Profit sharing

BT Incentive

Wage

NT Industrial wage

RT Income

Wage incentive

SN —additional/wage/payments intended to stimulate production.

BT Incentive

Wage policy

BT Economic policy

# ENGINEERING, TECHNOLOGY, CAPACITY, PRODUCTIVITY

## 2410 ENGINEERING

**Agricultural engineering**

**BT Engineering**

**Civil engineering**

**BT Engineering**

**Electrical engineering**

**BT Engineering**

**RT Electrical industry**

**Engineering**

**NT Agricultural engineering**

**Civil engineering**

**Electrical engineering**

**Hydraulic engineering**

**Industrial engineering**

**Hydraulic engineering**

**BT Engineering**

**Industrial engineering**

**BT Engineering**

**RT Industry**

## 2420 TECHNICAL INFORMATION (RT 0120)

**Industrial information**

**SN** -information of immediate use to the industrial engineer or manager, NOT general information on the industrial climate of an area.

**UF** Technological information

**BT** Technical information

2420 TECHNICAL INFORMATION (RT 0120) (cont.)

Technical information

- SN -interpret broadly, to include scientific information.
- NT Industrial information

Technological information USE Industrial information

2430 TECHNOLOGY, TECHNOLOGICAL CHANGE

Advanced skills and technology

Automation

- RT Automatic control

Capital intensive

- SN -with relatively greater plant and /equipment cost/s than /labour cost/s.
- RT Capital cost  
Equipment output ratio

Choice of technology

- SN -deciding on /labour intensive/ or /capital intensive/ methods, choosing among various processes, etc.

Continuous operation

- SN -as opposed to batch production, for processes which should be scheduled on a 24 hour day, seven day week basis, with only maintenance interruptions.

Engineering aspect USE Technical aspect

Innovation

- RT Patent

Intermediate technology

- SN -technology which will improve on the /productivity/ of traditional methods, yet not require the /capital/ and /training/ typically required for the adoption of /advanced skills and technology/.

**Knowhow**

- SN – includes technological and managerial components.
- UF Technological knowhow
- RT Industrial property

**Labour intensive**

- SN –having relatively greater /labour cost/s than plant and /equipment cost/s.
- RT Labour cost

**Mass production**

**Mechanization**

- NT Agricultural mechanization

**Modernization**

**Processing\***

**Technical aspect**

- UF Engineering aspect

**Technical progress USE Technological change**

**Technological change**

- UF Technical progress

**Technological knowhow USE Knowhow**

**Technological obsolescence**

**Technology**

- SN –refers to the state of technology as a whole, or in a particular branch of industry, e.g. /plastics/ /technology/. DO NOT USE for individual processes.
- NT Food technology
- Wood technology

**Technology transfer**

---

\* Probably not a useful descriptor—avoid if possible.

## 2440 CAPACITY, PRODUCTIVITY

Cost output ratio

Efficiency USE Productivity

Equipment output ratio

RT Capital intensive

Excess capacity

BT Production capacity

Industrial production

SN -use ONLY for discussing the whole production of the /industrial sector/ or a country or region. DO NOT USE ... /handicraft/ or /industrial production/ of /glove/s in /Lilliput/ ...

Labour productivity

BT Productivity

RT Production standard

Machine capacity

BT Production capacity

Overproduction

Production capacity

NT Excess capacity

Machine capacity

RT Economy of scale

Production statistics

BT Statistics

Production target

Productivity

UF Efficiency

NT Labour productivity

World production



# **FACTORY, PROCESSES, RAW MATERIALS, FINISHED GOODS, STANDARDS**

## **2510 FACTORY, EQUIPMENT (RT 3730)**

**Equipment replacement**  
RT Maintenance and repair

**Factory**

**Industrial equipment**  
BT Equipment

**Second hand equipment**  
BT Equipment

**Workshop**  
NT Repair shop

## **2520 ASSEMBLING, MAINTENANCE AND REPAIR, MATERIALS HANDLING**

**Assembling**  
NT Automobile assembling

**Assembly line**

**Component**

**Maintenance and repair**  
RT Equipment replacement

**Materials handling**  
UF Mechanical handling  
RT Loading

**Mechanical handling** USE Materials handling

**Repair shop**  
BT Workshop

**Spare part**

## 2530 RAW MATERIAL, PRODUCT, WASTE

By product

BT Product

Choice of product

SN —a chemical, electronics, etc. industry is to be established. Now the specific /product/s or /product mix/ to be produced must be chosen . . .

Finished product

SN —use only in discussion of /export/ or /import/ or /raw material/s or /semimanufactured product/s as opposed to finished products; or of /vertical integration/, regarding the decision to proceed to the manufacture of the finished product, rather than /marketing/ at an earlier stage.

Industrial product\*

BT Product

Industrial waste

SN —may also be used for the waste products of a single industry.

Product\*

NT Agricultural product  
By product  
Competitive product  
Industrial product  
Petroleum product  
Semimanufactured product  
Wood product

Product mix

SN —concerns the various /product/s and the proportion of each that can be produced economically in one /enterprise/.

Raw material

Semimanufactured product

BT Product

---

\* Probably not a useful descriptor—avoid if possible

2540 CAPITAL GOODS, CONSUMER GOODS

Bathroom fixture USE Sanitary ware

Capital goods

Consumer goods

Household goods

UF Kitchen ware

Kitchen ware USE Household goods

Sanitary ware

SN --manufactured from ceramic, or /metal/, or plastic materials.

UF Bathroom fixture

Sink

Tub

Sink USE Sanitary ware

Tub USE Sanitary ware

2550 PRODUCTION CONTROL

Automatic control

RT Automation

BT Production control

Process control

BT Production control

Production control

NT , Automatic control

Process control

Quality control

Testing

## 2560 STANDARDS, STANDARDIZATION

Industrial standards institute USE Standards institute

Metrology

Production standard

SN –rate of output which a worker is expected to maintain in order to receive a specific /wage/.

BT Standard

RT Labour productivity

Quality standard

BT Standard

Specifications

Standard

SN –mandatory standards as laid down in official codes.

NT Production standard

Quality standard

Standardization

Standards institute

UF Industrial standards institute

## PRODUCT DEVELOPMENT, INDUSTRIAL PROPERTY

### 2610 PRODUCT DEVELOPMENT (RT 0210)

Commercialization

SN –developing a /by product/ or a /product/formerly produced only under special conditions (e.g. in a /laboratory/) into a product which can be produced in quantity and sold at a /profit/.

Design centre

**Domestic content**

SN —that portion of a /product/ which is manufactured locally, as opposed to imported /component/s.

**Engineering design**

UF Industrial design

NT Product design

**Industrial application**

SN —of a process which was formerly only operable under /laboratory/ conditions, as a /handicraft/, or as a curiosity; also of materials newly found useful in industrial production.

**Industrial design** USF Engineering design

**Industrial research**

SN —to develop new or improved production methods and /product/s.

BT Research

**Pilot plant**

**Product design**

BT Engineering design

**Product development**

BT Research and development

**Prototype**

SN —a working model of a proposed /product/, which can be tested, and if necessary modified, before production begins.

**Research and development**

NT Product development

**Value added**

**2620 INDUSTRIAL PROPERTY**

**Industrial property**

RT Knowhow

2620 INDUSTRIAL PROPERTY (cont.)

Licence

Licensing

Patent

Patent law

BT Law

## COMMERCE, MARKETING, STOCK

### 2710 COMMERCE, MARKETING (RT 2810)

Advertising

Commerce

SN —domestic transactions only. For international exchange, use /trade/.

Cooperative marketing

BT Marketing

Distribution

SN —distribution of goods, as through a sales network.

Marketing

NT Cooperative marketing

Sales promotion

Trade fair

BT Export promotion

### 2720 STOCK

Purchasing

Stock

Storage

NT Cold storage  
Food storage

Turnover

Warehouse

## 2730 PACKAGING

Container

Packaging

# SUPPLY AND DEMAND, CONSUMPTION, PURCHASING POWER

## 2810 SUPPLY AND DEMAND, MARKET (RT 2710)

Demand

BT Supply and demand  
NT Consumer demand

Domestic market

BT Market

Market

NT Domestic market

Market information

Supply

BT Supply and demand

2810 SUPPLY AND DEMAND, MARKET (RT 2710) (cont.)

Supply and demand

NT Demand  
Supply

World market

2820 CONSUMER, CONSUMPTION (RT 1210)

Consumer

Consumer acceptance USE Consumer demand

Consumer demand

UF Consumer acceptance  
BT Demand

Consumption

SN —use to indicate consumption of a commodity or /product/  
throughout a geographic area; not by an individual machine or  
process.

NT Domestic consumption

Domestic consumption

BT Consumption

World consumption

2830 INCOME, PURCHASING POWER (RT 1210, 2370)

Income

RT Investment return  
RT Wage

Income distribution

Income redistribution



Purchasing power

Saving

RT Capital formation

Standard of living

## **FINANCIAL ASPECTS, CAPITAL, INVESTMENT, COSTS, PRICES**

### **2910 FINANCIAL ASPECT, CAPITAL**

Capital

Capital formation

RT Saving

Capital market

Financial aspect

Financing

NT Public financing  
Self financing

Industrial capital

SN –invested and /working capital/ of the /industrial sector/.

Public financing

SN –of industry, etc. May include both /public investment/s and /loan/s.

BT Financing

RT Government contribution

NT Public investment

2910 FINANCIAL ASPECT. CAPITAL (cont.)

Self financing

RT Reinvestment

BT Financing

Working capital

2920 INVESTMENT

Capital investment

SN -investment in /capital goods/.

BT Investment

Investment:

NT Capital investment

Foreign investment

Private investment

Public investment

Reinvestment

Investment policy

BT Economic policy

Investment promotion

Investment return

RT Income

Interest

Private investment

BT Investment

Public investment

BT Investment

Public financing

Reinvestment

RT Self financing

BT Investment

## 2930 BANKS, CREDIT, INSURANCE

Agricultural credit  
BT Credit

Amortization  
RT Interest

Bank  
NT Development bank  
Industrial bank

Credit  
NT Agricultural credit  
Instalment credit

Credit insurance  
SN —includes /export/ /credit/ /insurance/ and supplier credit  
generally, as well as /loan/ guarantees for /bank/ loans, etc.  
UF Loan guarantee  
BT Insurance

Credit policy  
BT Economic policy

Development bank  
BT Bank

Hire purchase USE Instalment credit

Industrial bank  
BT Bank

Instalment credit  
UF Hire purchase  
BT Credit

Insurance  
NT Credit insurance

Lease  
SN —the process of /lease/ing as well as the terms of the actual lease;  
includes leasing of /equipment/, land, fully equipped /factory/s,  
etc.

2930 BANKS, CREDIT, INSURANCE (cont.)

Loan

Loan guarantee USE Credit insurance

2940 FINANCIAL CONTROL

Accounting

NT Cost accounting

Budget

SN —of an /enterprise/ or organization. In the framework of /public finance/, use /national budget/.

Budgeting

Cash flow

Cost accounting

BT Accounting

Financial control

2950 COSTS, COSTING

Capital cost

SN —cost of plant, /machinery/, etc.

RT Capital intensive

NT Equipment cost

Comparative cost

Cost

NT Capital cost  
Cost of capital  
Labour cost  
Production cost  
Social cost

**Cost of capital**

NT Interest

**Costing**

RT Pricing

**Equipment cost**

UF Machinery cost

BT Capital cost

**Financial loss**

**Interest**

BT Cost of capital

RT Investment return

**Labour cost**

SN -all /cost/s involved in providing /labour/, i.e. /wage/s, allowances, /social service/s, etc.

BT Cost

RT Labour intensive

**Machinery cost USE Equipment cost**

**Production cost**

BT Cost

**Social cost**

RT Public interest

Social

**Value analysis**

SN -used both at the /product design/ stage, and to increase /productivity/ generally; its basic principle being to define the function to be performed (by a /component/, product or process) and then to discover how to do it most economically.

**2960 PRICES, PRICING**

**Administered price**

SN -/price/ set by the state.

BT Price

29#0 PRICES, PRICING (cont.)

Price

NT Administered price

Price control

Price policy

BT Economic policy

Price support

RT Export subsidy  
Industrial subsidy

Pricing

RT Costing

## PRIMARY SECTOR, AGRICULTURE

### 3010 PRIMARY SECTOR

Agriculture (RT 3020, 3030)

Fishery

(RT 3040)

Forestry

(RT 3210)

Primary sector

### 3020 COMMERCIAL FARMING (RT Agriculture)

Agricultural mechanization

BT Mechanization

RT Agricultural equipment

Agricultural machinery

Agricultural product  
BT Product  
NT Animal product  
Plant product

Agricultural waste

Commercial farming  
UF Industrial farming

Crop yield

Feed production  
SN –for animals.  
RT Milling industry

Food production  
SN –for humans.

Greenhouse

Harvesting

Horticulture

Hybridization

Industrial farming USE Commercial farming

Silo

### 3030 LIVESTOCK (RT Agriculture)

**Animal feeding**  
SN –use when discussing the problems and/or methods of feeding animals. When discussing *what they are to eat*, use /feed/.

Animal health

Carcass

Feed

3030 LIVESTOCK (RT Agriculture) (cont.)

Live animal

Livestock

Slaughtering

3040 AQUATIC FAUNA

Crab USE Shellfish

Crustacean USE Shellfish

Fish

RT Protein rich food

Lobster USE Shellfish

Mollusc USE Shellfish

Oyster USE Shellfish

Shellfish

UF Crab  
Crustacean  
Lobster  
Mollusc  
Oyster  
Shrimp

Shrimp USE Shellfish

## PLANT AND ANIMAL PRODUCTS, FOOD INDUSTRY

3110 PLANTS, PLANT PRODUCTS (RT 3230, 3260)

Agar

Avocado



**Bagasse**

**Bamboo**

**Banana**

**Buckwheat**

**BT Cereal**

**Cashew nut**

**Cassava**

**Cereal**

**NT Buckwheat**

**Maize**

**Millet**

**Rice**

**Sorghum**

**Wheat**

**RT Grain processing**

**Milling industry**

**Citrus fruit**

**Coconut**

**RT Coconut fibre**

**Coffee**

**Com USE Maize**

**Cottonseed**

**Date**

**Esparto grass**

**Fibre plant**

**RT 3230**

**Fruit**

**SN -for NT consider other descriptors in this section.**

3110 PLANTS, PLANT PRODUCTS (RT 3230, 3260) (cont.)

Garlic

Groundnut

UF Peanut

Licorice USE Liquorice

Liquorice

UF Licorice

Maize

UF Corn

BT Cereal

Medicinal plant

RT 3560

Millet

BT Cereal

Oil palm

Oil plant

RT 3170

Oilseed

Onion

Peanut USE Groundnut

Pineapple

Plant product

SN —for NT consider other descriptors in this section and in 3150, 3170, 3230, etc.

BT Agricultural product

Potato

Rape

Rattan

Rice  
BT Cereal

Rice bran

Saracen wheat USE Buckwheat

Seaweed

Sorghum  
BT Cereal

Soybean

Sugar beet

Sugar cane

Tea

Tropical fruit

Vegetable  
SN -for NT consider other descriptors in this section.

Wheat  
BT Cereal

3120 ANIMAL PRODUCTS (RT 3240)

Animal product  
SN -for NT consider other descriptors in this section, and in 3150,  
3170, 3230, 3240, etc.  
BT Agricultural product  
BT

Bone

Casein  
BT Dairy product

Dairy product  
UF Milk product  
NT Casein  
Milk

3120 ANIMAL PRODUCTS (RT 3240) (cont.)

Egg

Lanolin

Meat

BT Meat product  
Protein Rich food.

Meat product

NT Meat

Milk

BT Dairy product

Milk product USE Dairy product

3130 FOOD INDUSTRY

Beverage industry

BT Food industry

RT Brewery

Brewery

RT Beverage industry

Dairy products industry

UF Milk processing

BT Food industry

Food industry

NT Beverage industry

Dairy products industry

Meat industry

Sugar industry

Meat industry

UF Meat processing

BT Food industry

**Milling industry**

- UF Grain milling
- RT Cereal
- Feed production
- Grain processing

**Sugar industry**

- UF Sugar refinery
- BT Food industry

Sugar refinery USE Sugar industry

**3140 FOOD TECHNOLOGY, PROCESSES**

**Agri product processing**

- SN -for NT consider other descriptors in this section, also Tanning, etc.

**Baking**

**Bottling**

**Canning**

**Cold storage**

- BT Storage
- RT Refrigeration
- Temperature

**Controlled atmosphere**

- SN -control of /temperature/, /humidity/, and /nitrogen/-/oxygen/- etc. mix of the atmosphere to lengthen /storage/ life of /plant product/s, facilitate manufacturing processes, etc.

**Fishery product processing**

**Food preservation**

**Food storage**

- BT Storage

**Food technology**

- BT Technology

3140 FOOD TECHNOLOGY, PROCESSES (cont.)

Freeze drying

Freezing USE Refrigeration

Grading

Grain milling USE Grain processing, Milling industry

Grain processing

UF Grain milling

RT Cereal

Milling industry

Meat processing USE Meat industry

Milk processing USE Dairy products industry

Preserving

Refrigeration

UF Freezing

RT Cold storage

Temperature

Smoking

SN -for curing /meat/, etc.; not the /tobacco/ habit.

3150 FOOD, FOOD PRODUCTS (RT 1230)

Amino acid

Bakery product

NT Bread

Beet sugar

BT Sugar

Bread

BT Bakery product

Cane sugar

BT Sugar

Canned food

Carbohydrate

NT Starch  
Sugar

Chocolate

Cocoa

Fish protein concentrate

BT Protein rich food

Flavouring

NT Monosodium glutamate  
Spice

Flour

Food

RT Nutrition

Food additive

NT Monosodium glutamate

Frozen food

Fruit jelly USE Fruit preserves

Fruit preserves

UF Fruit jelly  
Jam  
Marmalade

Irradiated food

Jam USE Fruit preserves

## 3150 FOOD, FOOD PRODUCTS (RT 1230) (cont.)

### Macaroni

SN - includes various food pastes, e.g. spaghetti, noodles, etc.

Marmalade USE Fruit preserves

### Monosodium glutamate

BT Flavouring  
Food additive

### Protein

#### Protein rich food

RT Fish  
Meat  
Soybean  
NT Fish protein concentrate

### Spice

BT Flavouring

### Starch

BT Carbohydrate

### Sugar

BT Carbohydrate  
NT Beet sugar  
Cane sugar

### Sweets and candy

## 3160 BEVERAGES

### Alcoholic beverage

NT Beer  
Wine

Ale USE Beer



Beer

UF Ale  
BT Alcoholic beverage

Fruit juice

Mineral water

Nonalcoholic beverage USE Soft drink

Soft drink

UF Nonalcoholic beverage

Wine

BT Alcoholic beverage

### 3170 OIL AND FAT, EDIBLE OIL

Animal fat

Edible oil

BT Oil and fat  
NT Vegetable oil

Essential oil

BT Oil and fat

Fish oil

BT Oil and fat

Oil and fat

UF Oil industry  
NT Edible oil  
Essential oil  
Fish oil

Oil industry USE Oil and fat; Petroleum industry

Olive oil

BT Vegetable oil

3170 OIL AND FAT, EDIBLE OIL (*cont.*)

Palm oil

BT Vegetable oil

Vegetable oil

BT Edible oil

NT Olive oil  
Palm oil

## WOOD, SPORTS GOODS, TEXTILES, LEATHER, RUBBER, TOBACCO, PRINTING

3210 WOOD, PULP AND PAPER (RT Forestry)

Cardboard

Cellulose

Cork

Fibreboard

Forest product

SN —may include gums and /resin/s, /rubber/, /timber/, /wood/, and wood /pulp/, as well as products of forest plants other than trees.  
Cf. /wood product/.

NT Wood product

Forest product processing

NT Wood processing

Match

Newsprint

Paper

NT Newsprint

Particle board

Plywood

Pulp

Pulp and paper industry

Timber

Tree species

Tropical timber

Veneer

Wood

Wood fibre

Wood plastic combination

Wood processing

BT Forest product processing

Wood product

SN —use for /finished product/s such as /furniture/, /sports goods/, etc. Cf. /forest product/.

BT Forest product

NT —for narrower terms consider other descriptors in this and the following sections

Wood residue USE Woodwaste

Wood technology

BT Technology

Woodwaste

UF Wood residue

## 3220 FURNITURE, SPORTS GOODS

Furniture

Sports goods

Toy

3230 TEXTILE INDUSTRY, FIBRES, CLOTHING (RT Fibre plant, 3110)

Clothing

Coconut fibre

- RT Coconut
- BT Natural fibre

Cotton

- BT Natural fibre

Dyeing

Flax

- BT Natural fibre

Hair

- BT Natural fibre

Hemp

- BT Natural fibre

Hosiery

- SN —underclothing, stockings, trimmings, etc.

Jute

- BT Natural fibre

Kenaf

- BT Natural fibre

Knitting

Manmade fibre

- SN —/synthetic fibre/s, plus Rayon, Glass fibres, Mineral wool, etc.
- NT Synthetic fibre

Natural fibre

- NT Coconut fibre
- Cotton
- Flax
- Hair

Hemp  
Jute  
Kenaf  
Ramie  
Silk  
Sisal  
Wool

Nylon USE Synthetic fibre

Ramie

BT Natural fibre

Rope industry

Silk

BT Natural fibre

Sisal

BT Natural fibre

Spinning

Synthetic fibre

UF Nylon

BT Manmade fibre

Textile

Textile finishing

Textile industry

Weaving

Wig

Wool

BT Natural fibre

Yarn

**3240 LEATHER, SHOES (RT 3120)**

Boot USE Shoe

Fur

Glove

Hides and skins  
UF Pelt

Leather

Leather goods

Leather industry

Pelt USE Hides and skins

Shoe  
UF Boot

Tanning

**3250 RUBBER INDUSTRY**

Latex

Rubber  
RT Tile

Rubber industry

Synthetic rubber

Tire

**3260 TOBACCO INDUSTRY (RT 3110)**

Cigar manufacturing USE Tobacco industry

Cigarette manufacturing USE Tobacco industry

Tobacco

Tobacco industry

### 3270 PRINTING INDUSTRY

Printing industry

## CONSTRUCTION INDUSTRY, CERAMICS, GLASS

### 3310 CONSTRUCTION INDUSTRY, HOUSING

Building industry USE Construction industry

Construction industry

UF Building industry

RT Public works

Earthmoving

Housing

Prefabricated building

### 3320 BUILDING MATERIALS, CEMENT INDUSTRY (RT 3210)

Aggregate

Asbestos

BT Refractory material

**3320 BUILDING MATERIALS, CEMENT INDUSTRY (RT 3210) (cont.)**

**Building material**

**SN** - for narrower terms consult this section and the two following sections.

**Cement**

**NT** Portland cement

**Cement industry**

**Concrete**

**Gypsum**

**Lime**

**Marble**

**Portland cement**

**BT** Cement

**Sand**

**RT** Silicon

**Stone**

**3330 CERAMICS INDUSTRY, REFRACTORY MATERIALS**

**Brick**

**BT** Clay building material

**Ceramic**

**UF** Pottery

**Ceramics industry**

**Clay**

**Clay building material**

**NT** Brick

**RT** Tile



Pottery USE Ceramic

Refractory material

NT Asbestos

Tile

RT Clay building material  
Rubber

### 3340 GLASS

Glass

Glass industry

## ENERGY, POWER, FUEL, PETROLEUM INDUSTRY

### 3410 ENERGY, POWER

Energy

NT Electric power  
Nuclear energy  
Solar energy  
Steam power

Energy economics

BT Economics

Energy source

RT Coal  
Fuel  
Gas  
Petroleum  
Uranium  
Water

Heat recovery

### 3410 ENERGY, POWER *(cont.)*

Nuclear energy

BT Energy

Power consumption

Power plant

NT Electric power station

Power resources

Power supply

NT Fuel supply

Solar energy

BT Energy

Steam power

BT Energy

### 3420 ELECTRIC POWER

Electric power

BT Energy

NT Hydroelectric power

Electric power distribution

Electric power station

BT Power plant

Electricity

Hydroelectric power

BT Electric power

### 3430 COAL, FUEL, GAS

Coal

RT Energy source

Coke

Fuel

NT Motor fuel  
RT Energy source.

Fuel supply

BT Power supply

Gas

RT Energy source  
NT Natural gas

Gas distribution

Natural gas

BT Gas  
RT Petroleum

### 3440 PETROLEUM INDUSTRY (RT 3530)

Ethylene

Gasolene USE Petrol

Kerosene

Lubricant

Motor fuel

NT Petrol

Naphtha

Oil industry USE Oil and fat: Petroleum industry

Petrol

UF Gasolene  
BT Motor fuel

Petroleum

RT Natural gas

**3440 PETROLEUM INDUSTRY (RT 3530) (cont.)**

**Petroleum by product USE /Petroleum/By product/**

**Petroleum industry**

**UF Oil industry**

**RT Petrochemical industry**

**Petroleum product**

**RT Petrochemicals**

**Petroleum refinery**

**Petroleum resources**

**BT Natural resources**

**Residual oil**

## **CHEMICAL INDUSTRIES**

**3510 CHEMICAL INDUSTRY**

**Chemical industry**

**NT Petrochemical industry**

**Fertilizer industry**

**Pharmaceutical industry**

**Plastics industry**

**Chemical reactor**

**Petrochemical industry**

**BT Chemical industry**

**3520 PHYSICAL AND CHEMICAL ATTRIBUTES, PROCESSES, STATES**

**Chemical analysis**

**Coating process**

**RT Metallizing**

**NT Plating**

**Contamination**

Corrosion  
RT Biodeterioration

Dehydration

Distilling

Drying

Evaporation

Glazing

Heating

Humidity

Hydrogenation

Hydrolysis

Irradiation  
RT Radioactive isotope

Sterilization  
SN -use only to denote the process as applied in the /food industry/,  
the /pharmaceutical industry/, etc.

Refining

Synthetic

Temperature  
RT Cold storage  
Refrigeration

Ultraviolet

Vacuum

### 3530 CHEMICALS, PETROCHEMICALS, NONMETALLIC MINERALS (RT 3440)

Alcohol

Ammonia

Calcium

3530 CHEMICALS, PETROCHEMICALS, NONMETALLIC MINERALS (RT 3440)

(cont.)

Calcium carbonate

UF Chalk

Catalyst

Caustic soda

BT Soda

Chalk USE Calcium carbonate

Chemicals

UF Industrial chemicals

Fluorine

Furfural

Graphite

Hydrochloric acid

Hydrogen

Industrial chemicals USE Chemicals

Magnesium

Mica

Nitric acid

Nitrogen

Organic acid

Oxygen

Petrochemicals

Phosphate

Phosphoric acid

Phosphorus

Potash

Potassium

Radioactive isotope

Salt

RT Desalinization

Silicon

RT Sand

Soda

NT Caustic soda

Soda ash USE Sodium carbonate

Sodium

Sodium carbonate

UF Soda ash

Sodium silicate

Sulphate

Sulphur

Sulphuric acid

Tetraethyl lead

Urea

## 3540 FERTILIZER INDUSTRY, PESTICIDES

Fertilizer

Fertilizer industry

BT Chemical industry

## 3540 FERTILIZER INDUSTRY, PESTICIDES (*cont.*)

Herbicide

RT Weed control

Insecticide

RT Pest control

Pesticide

RT Pest control

## 3550 BIOCHEMISTRY, MICROBIOLOGY

Biodeterioration

RT Corrosion

Biomass

Enzyme

Fermentation

Genetic improvement

Malt

Microbiology

Microorganism

Mutation

Yeast

## 3560 PHARMACEUTICAL INDUSTRY (RT Medicinal plant)

Antibiotic

Caffeine

Contraceptive

Drug USE Pharmaceutical



Gum arabic

Pharmaceutical  
UF Drug

Pharmaceutical industry  
BT Chemical industry

Vitamin

### 3570 PLASTICS INDUSTRY

Cellophane

Plastics

Plastics industry  
BT Chemical industry

Polyvinyl chloride  
UF PVC

PVC USE Polyvinyl chloride

### 3580 CHEMICAL INDUSTRY PRODUCTS

Abrasives

Adhesive

Coatings  
NT Paints and varnishes

Cosmetics

Detergent

Explosive

Paints and varnishes  
BT Coatings

3580 CHEMICAL INDUSTRY PRODUCTS (cont.)

Perfume

Resin

Soap

Solvent

Wax

## METALS INDUSTRIES

### 3610 METALLURGY, METALS INDUSTRIES

Aluminium industry

Iron and steel industry

UF Steel industry

Metallurgy

Steel industry USE Iron and steel industry

### 3620 METALS, ORES

Alloy

Alumina

Aluminium

Aluminium ore USE Bauxite; for non-bauxite ores USE /Aluminium/ /ore/

Bauxite

UF Aluminium ore

BT Ore

Brass

Cadmium

Chromium

Cobalt

Copper

Iron

Iron ore  
BT Ore

Lead

Manganese

Mercury

Metal

NT Nonferrous metal  
Precious metal  
and names of specific metals

Nickel

Nonferrous metal  
BT Metal

Ore

NT Bauxite  
Iron ore

Platinum

Precious metal  
BT Metal

Rare earth

Steel

Tin

## 3620 METALS, ORES *(cont.)*

Titanium

Tungsten

Uranium

RT Energy source

Zinc

## 3630 METALS PROCESSING, FOUNDRY

### Beneficiation

SN —classification and sorting of ore particles into mineral concentrate and tailings.

3T Ore dressing

Brazing

Casting

Extruding

Forging

Foundry

Heat treatment

SN —includes annealing, tempering, etc.

Machining

Metal cutting

Metal drawing

**Metallizing**

RT Coating process

**Ore dressing**

SN -treatment of ores to concentrate their valuable mineral constituents by 1) severance, and 2) beneficiation.

NT Beneficiation

**Ore processing**

NT Ore dressing

**Plating**

RT Coating process

**Rolling**

**Sinter**

**Smelting**

**Welding**

**3640 METAL PRODUCTS**

**Aluminium foil**

**Cable**

**Metal scrap**

UF Scrap metal

**Metal sheet**

UF Sheet metal

**Pipe**

**Scrap metal** USE Metal scrap

**Sheet metal** USE Metal sheet

**Slag**

**Tin plate**

**Wire**

# METALWORKING INDUSTRY, MACHINERY

## 3710 METALWORKING INDUSTRY, TOOLS

Dies and jigs

Hand tool

BT Tool

Machine tool

BT Tool

Machine tool industry

BT Machinery industry

Metalworking industry

NT Machinery industry

Mould

Tool

NT Hand tool

Machine tool

RT Equipment

## 3730 MACHINERY INDUSTRY, MACHINERY, EQUIPMENT

Agricultural equipment

BT Equipment

RT Agricultural mechanization

Agricultural machinery

UF Farm implement

RT Agricultural mechanization

NT Tractor

Building machinery

NT Earthmoving machinery

Diesel engine

BT Engine

**Drilling equipment**

BT Equipment

**Earthmoving machinery**

BT Building machinery

**Engine**

SN —internal combustion engine, /steam engine/s.

UF Motor

NT Diesel engine  
Steam engine

**Equipment**

NT Agricultural equipment  
Drilling equipment  
Electrical equipment  
Electronic equipment  
Industrial equipment  
Second hand equipment

RT Instrument  
Tool

**Farm implement USE Agricultural machinery**

**Hydraulic machinery**

**Lock**

**Machinery**

SN —for NT consider descriptors in this and related sections.

RT Equipment

**Machinery industry**

NT Instrumentation industry  
Machine tool industry  
Motor vehicle industry  
BT Metalworking industry

**Motor USE Electric motor, Engine**

**Office machine**

3730 METALWORKING INDUSTRY, TOOLS (cont.)

Pump

Sewing machine

Steam engine

3740 MOTOR VEHICLES, BICYCLES

Automobile

BT Motor vehicle

Automobile assembly

BT Assembling

Automobile industry

BT Motor vehicle industry

Bicycle

Bus

BT Motor vehicle

Lorry USE Truck

Motor vehicle

NT Automobile

Bus

Motorcycle

Tractor

Truck

Motor vehicle industry

BT Machinery industry

NT Automobile industry

Motorcycle

BT Motor vehicle



**Tractor**

**BT** Agricultural machinery  
Motor vehicle

**Truck**

**UF** Lorry  
**BT** Motor vehicle

**3750 RAILROAD TRAINS, SHIPS**

**Fishing vessel**

**NT** Trawler

**Locomotive**

**BT** Rolling stock

**Rolling stock**

**NT** Locomotive

**Shipbuilding**

**Trawler**

**BT** Fishing vessel

**3760 PRECISION MACHINERY**

**Instrument**

**NT** Measuring instrument  
Medical instrument  
Optical instrument  
**RT** Equipment

**Instrumentation industry**

**BT** Machinery industry  
**NT** Optical industry

**Measuring instrument**

**BT** Instrument

3760 PRECISION MACHINERY (cont.)

Medical instrument  
BT Instrument

Optical industry  
BT Instrumentation industry

Optical instrument  
BT Instrument

Watchmaking

## **ELECTRICAL AND ELECTRONICS INDUSTRIES**

### **3810 ELECTRICAL INDUSTRY, ELECTRONICS (RT 3910)**

Electrical industry  
RT Electrical engineering

Electronics

Electronics industry  
RT Telecommunications industry

Radio industry USE Telecommunications industry

### **3820 ELECTRICAL, ELECTRONICS INDUSTRIES PRODUCTS (RT 3910)**

Anode USE Electrode

Cathode USE Electrode

Computer  
UF Electronic computer

Distribution transformer  
BT Transformer

Electric battery

Electric motor  
UF Motor

Electrical appliance

Electrical equipment  
SN -- for NT consider other descriptors in this section.  
BT Equipment

Electrical machinery  
SN -- for NT consider other descriptors in this section.

Electrode  
UF Anode  
Cathode

Electronic computer USE Computer

Electronic Equipment  
SN -- for NT consider other descriptors in this section.  
BT Equipment

Electronic tube

Insulator

Lamp

Light bulb USE Lamp

Radio set

Tape recorder

Television set

Transformer  
NT Distribution transformer

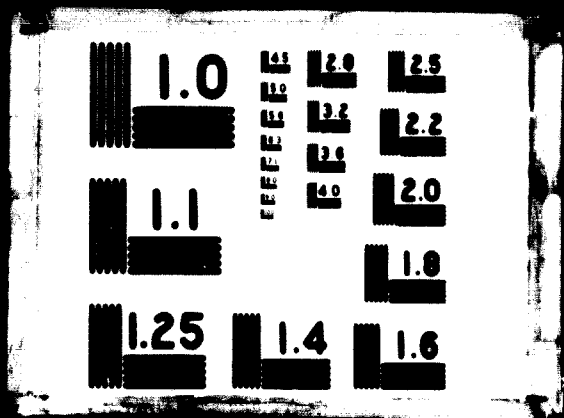
Transistor



**74.09.23**

3 OF 5

05248



# COMMUNICATIONS, TRANSPORT, TOURISM

## 3910 MASS COMMUNICATION (RT 3810, 3820)

### Film

UF Motion picture

### Film industry

### Mass communication

Motion picture USE Film

### Telecommunications industry

UF Radio industry

NT Telegraph  
Telephone  
Television

### Telegraph

BT Telecommunications industry

### Telephone

BT Telecommunications industry

### Television

BT Telecommunications industry

## 3920 TRANSPORT

### Airport

### Air transport

### Harbour USE Port

### Inland water transport

### Loading

RT Materials handling

### Pipeline

**Port**

**UF Harbour**

**Railway**

**Road network**

**Road transport**

**Sea transport**

**Transport**

**Transport economics**

**BT Economics**

**Urban transport**

**RT Urbanization**

### **3930 TOURISM**

**Hotel industry**

**BT Service industry**

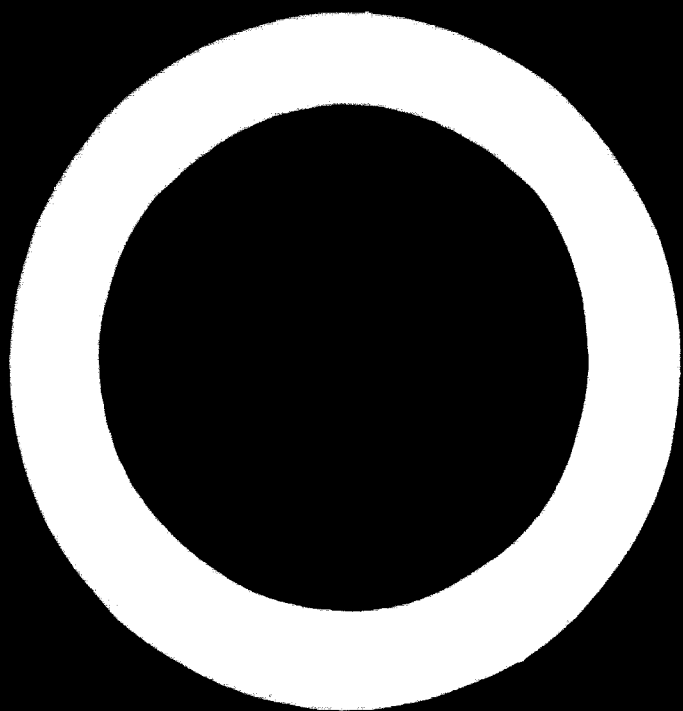
**Tourism**

## **\* MISCELLANEOUS PRODUCTS**

### **4010 MISCELLANEOUS PRODUCTS**

**Jewellery**

**Pen**





# PERMUTED ALPHABETICAL LIST OF DESCRIPTORS

3580	Abrasives
1240	Training abroad
2820	Consumer acceptance USE Consumer demand
2940	Accounting
2940	Cost accounting
3150	Amino acid
3530	Hydrochloric acid
3530	Nitric acid
3530	Organic acid
3530	Phosphoric acid
3530	Sulphuric acid
1540	Field activity
2610	Value added
3150	Food additive
3580	Adhesive
2960	Administered price

1470	Economic	administration
1470	Industrial	administration
1310		Administrative aspect
1310		Administrative reform
2430		Advanced skills and technology
2710		Advertising
1540	Field	advisor
3110		Agar
1470	Industrial development	agency
1520	Regional	agency
0140		Agenda
3320		Aggregate
1520	Bilateral	agreement
1430	Tax	agreement
1610	Trade	agreement
3140		Agri product processing
2930		Agricultural credit
2410		Agricultural engineering
3730		Agricultural equipment
1470		Agricultural extension
3730		Agricultural machinery
3020		Agricultural mechanization

3020		Agricultural product
3020		Agricultural waste
3010		Agriculture
1240	Audio visual	aid
1530	Foreign	aid
1530	Private	aid
1530		Aid institution
1530		Aid project
0140		Aide memoire
3920		Airport
3920		Air transport
3530		Alcohol
3160		Alcoholic beverage
3160		Alc USE Beer
1460		Allocation of resources
3620		Alloy
3620		Alumina
3620		Aluminium
3640		Aluminium foil
3610		Aluminium industry
3620		Aluminium ore USE /Bauxite/; /Aluminium/ /ore/ (for non-bauxite ores)
3150		Amino acid
3530		Ammonia

2930	Amortization
3520	Chemical analysis
1450	Economic analysis
0220	Input output analysis
0220	Mathematical analysis
0220	Network analysis USE Systems analysis
0220	Statistical analysis
0220	Systems analysis
2950	Value analysis
3030	Live animal
3170	Animal fat
3030	Animal feeding
3030	Animal health
3120	Animal product
0150	Annual report
3820	Anode USE Electrode
3560	Antibiotic
3820	Electrical appliance
2610	Industrial application
3560	Gum arabic
1420	Developing area
2180	Industrial area

1110 Rural area

1110 Urban area

1210 Area development

3320 Asbestos

3530 Soda ash USE Sodium carbonate

1310 Administrative aspect

1410 Economic aspect

1240 Educational aspect

2430 Engineering aspect USE Technical aspect

2910 Financial aspect

1330 Legal aspect

2210 Organizational aspect

1210 Social aspect

2430 Technical aspect

2520 Assembling

3740 Automobile assembly

2520 Assembly line

2180 Site assessment

1530 Development assistance

1530 Economic assistance

1530 Financial assistance

1530	Industrial assistance USE Technical assistance
1530	Technical assistance
1530	Training assistance
1620	Exporters association
2210	Manufacturers association
3140	Controlled atmosphere
1240	Audio visual aid
1480	Project authorization
2550	Automatic control
2430	Automation
3740	Automobile
3740	Automobile assembly
3740	Automobile industry
3110	Avocado
3110	Bagasse
3150	Bakery product
3140	Baking
1640.	Balance of payments
1620	Balance of trade
3110	Bamboo
108	

3110	Banana
2930	Bank
0130	Data bank
2930	Development bank
2930	Industrial bank
1630	Trade barrier
2540	Bathroom fixture USE Sanitary ware
3820	Electric battery
3620	Bauxite
3160	Beer
3110	Sugar beet
3150	Beet sugar
3630	Beneficiation
3160	Alcoholic beverage
3160	Nonalcoholic beverage USE Soft drink
3130	Beverage industry
0140	Bibliography
3740	Bicycle
1510	Bilateral
1520	Bilateral agreement
3550	Biodeterioration

3550		Biomass
3210	Particle	board
3120		Bone
3240		Boot USE Shoe
3140		Bottling
2310		Brain drain
3110	Rice	bran
3620		Brass
3630		Brazing
3150		Bread
3130		Brewery
3330		Brick
3110		Buckwheat
2940		Budget
1430	National	budget
2940		Budgeting
3310		Building industry USE Construction industry
3730		Building machinery
3320		Building material
3330	Clay	building material
3310	Prefabricated	building
110		



3820	Light bulb USE Lamp
3740	Bus
2210	Business management
3530	By product
3440	Petroleum by product USE /Petroleum/ /By product/
3640	Cable
3620	Cadmium
3560	Caffeine
3530	Calcium
3530	Calcium carbonate
3150	Sweets and candy
3110	Sugar cane
3150	Cane sugar
3150	Canned food
3140	Canning
2440	Excess capacity
2440	Machine capacity
2440	Production capacity
2910	Capital
2950	Cost of capital

1640	Export of capital
2910	Industrial capital
2910	Working capital
2950	Capital cost
1620	Capital export
2910	Capital formation
2540	Capital goods
2430	Capital intensive
2920	Capital investment
2910	Capital market
3150	Carbohydrate
3530	Calcium carbonate
3530	Sodium carbonate
3030	Carcass
3210	Cardboard
1450	Case study
3120	Casein
2940	Cash flow
3110	Cashew nut
3110	Cassava
3630	Casting

3530		Catalyst
3820		Cathode USE Electrode
3530		Caustic soda
3570		Cellophane
3210		Cellulose
3320		Cement
3320	Portland	cement
3320		Cement industry
1320		Centralization
1240	Demonstration	centre
2610	Design	centre
1530	Development	centre
1240	Training	centre
3330		Ceramic
3330		Ceramics industry
3110		Cereal
3530		Chalk USE Calcium carbonate
1470		Chamber of commerce
1470		Chamber of industry
1210	Social	change
2430	Technological	change
0140	Flow	chart

3520	Chemical analysis
3510	Chemical industry
3510	Chemical reactor
3530	Chemicals
3530	Industrial chemicals USE Chemicals
3570	Polyvinyl chloride
3150	Chocolate
2530	Choice of product
1480	Choice of project USE Project selection
2430	Choice of technology
3620	Chromium
3260	Cigar manufacturing USE Tobacco industry
3260	Cigarette manufacturing USE Tobacco industry
3110	Citrus fruit
2410	Civil engineering
1310	Civil service
2110	Classification of industries
0120	Classification system
3330	Clay
3330	Clay building material
0120	Clearing house
3230	Clothing
3430	Coal
3520	Coating process

3580		Coatings
3620		Cobalt
3150		Cocoa
3110		Coconut
3230		Coconut fibre
3110		Coffee
3430		Coke
3140		Cold storage
0130	<b>Data</b>	<b>collecting</b>
3210	<b>Wood plastic</b>	<b>combination</b>
2710		<b>Commerce</b>
1470	<b>Chamber of</b>	<b>commerce</b>
3030		<b>Commercial farming</b>
2610		<b>Commercialization</b>
1520		<b>Common market</b>
1470		<b>Common service</b>
3910	<b>Mass</b>	<b>communication</b>
1440		<b>Communist country USE Socialist country</b>
1210		<b>Community development</b>
2950		<b>Comparative cost</b>
1450		<b>Comparative study</b>
2160		<b>Competition</b>

2160		Competitive
2160		Competitive product
2520		Component
3820		Computer
3820	Electronic	computer USE Computer
0130		Computer programme
3150	Fish protein	concentrate
2180	Industrial	concentration
3320		Concrete
1420	Economic	conditions
2350	Working	conditions
0110		Conf
1310		Constitution
3310		Construction industry
1540		Consultant
2210	Industrial	consulting
2210	Management	consulting
2820		Consumer
2820		Consumer acceptance USE Consumer demand
2820		Consumer demand
2540		Consumer goods
2820		Consumption
116		

2820	<b>Domestic consumption</b>
3410	<b>Power consumption</b>
2820	<b>World consumption</b>
2730	<b>Container</b>
3520	<b>Contamination</b>
2610	<b>Domestic content</b>
2430	<b>Continuous operation</b>
3560	<b>Contraceptive</b>
1330	<b>Contract</b>
1530	<b>Government contribution</b>
1530	<b>Voluntary contribution</b>
2550	<b>Automatic control</b>
2940	<b>Financial control</b>
1130	<b>Pest control</b>
1130	<b>Pollution control</b>
2960	<b>Price control</b>
2550	<b>Process control</b>
2550	<b>Production control</b>
2550	<b>Quality control</b>
1130	<b>Weed control</b>
3140	<b>Controlled atmosphere</b>
1640	<b>Convertibility</b>

2170		Cooperation
1520	International	cooperation
1520	Regional	cooperation
2170		Cooperative
2170	Industrial	cooperative
2170	Marketing	cooperative
2170	Production	cooperative
2710		Cooperative marketing
3620		Copper
3210		Cork
3110		Corn USE Maize
0120	Network of	correspondents
3520		Corrosion
3580		Cosmetics
2950		Cost
2950	Capital	cost
2950	Comparative	cost
2950	Equipment	cost
2950	Labour	cost
1480		Local cost
2950	Machinery cost	USE Equipment cost



2950	Production cost
2950	Social cost
2940	Cost accounting
2950	Cost of capital
2440	Cost output ratio
2950	Costing
2140	Cottage industry
3230	Cotton
3110	Cottonseed
1480	Counterpart
1540	Counterpart personnel
1440	Communist country USE Socialist country
1420	Developed country
1420	Least developed country
1420	Developing country
1420	Industrialized country USE Developed country
1520	Member country
1440	Socialist country
3040	Crab USE Shellfish
2930	Credit
2930	Agricultural credit
2930	Instalment credit
2930	Credit insurance
2930	Credit policy

3020		Crop yield
3040		Crustacean USE Shellfish
1640		Currency
1640	Nonconvertible	currency
1630		Customs policy
1630		Customs union
3630	Metal	cutting

3120		Dairy product
3130		Dairy products industry
0130	Electronic	data processing
0130		Data bank
0130		Data collecting
0130		Data processing
0130		Data recording
3110		Date
1530	Second Development	Decade
1320		Decentralization
2210		Decision making
0160		Definition
3520		Dehydration
120		

2810		Demand
2820	Consumer	demand
2810	Supply and	demand
1240	Mobile	demonstration workshop
1240		Demonstration centre
1120		Desalinization
2320	Job	description
2610	Engineering	design
2610	Industrial design USE	Engineering design
2610	Product	design
1480	Project	design
2210	Systems	design
2610		Design centre
3580		Detergent
1420		Developed country
1420	Least	developed country
1420		Developing area
1420		Developing country
1210	Area	development
1210	Community	development
1420	Economic	development
1460	Industrial	development

1470	Industrial development agency
1450	Industrial development survey
1240	Management development
2610	Product development
2610	Research and development
1210	Rural development
1530	Second Development Decade
1210	Urban development
1530	Development assistance
2930	Development bank
1530	Development centre
1540	Development personnel
1460	Development plan
1460	Development planning
1460	Development policy
1420	Development potential
1480	Development project
0140	Diagram
3710	Dies and jigs
3730	Diesel engine
1230	Staple diet
0140	Directory
122	

1130	Waste disposal
3520	Distilling
2710	Distribution
3420	Electric power distribution
3430	Gas distribution
1110	Geographic distribution
2830	Income distribution
3820	Distribution transformer
2150	Diversification
1460	International division of labour
0120	Documentation
0140	List of documents
2820	Domestic consumption
2610	Domestic content
2810	Domestic market
1460	Domestic production
2310	Brain drain
3630	Metal drawing
3630	Ore dressing
3730	Drilling equipment
3160	Soft drink
3560	Drug USE Pharmaceutical

3520	Drying
3140	Freeze drying
3230	Dyeing
3620	Rare earth
3310	Earthmoving
3730	Earthmoving machinery
1110	East
1470	Economic administration
1450	Economic analysis
1410	Economic aspect
1530	Economic assistance
1420	Economic conditions
1420	Economic development
1110	Economic geography
1420	Economic growth
1410	Economic implication
1410	Economic information
1520	Economic integration
1460	Economic planning
1460	Economic policy

1110	Economic region
1520	Economic relations
1420	Economic resources
1420	Economic situation USE Economic conditions
1420	Economic structure
1450	Economic survey
3410	<b>Energy economics</b>
1410	<b>Industrial economics</b>
3920	<b>Transport economics</b>
1440	<b>Market economy</b>
1440	<b>Mixed economy</b>
1420	<b>National economy</b>
1440	<b>Planned economy</b>
2140	<b>Economy of scale</b>
3170	<b>Edible oil</b>
1240	<b>Education</b>
1240	<b>Technical education</b>
1240	<b>Educational aspect</b>
1240	<b>Educational material</b>
1240	<b>Educational need</b>
1240	<b>Educational policy</b>
2440	<b>Efficiency USE Productivity</b>

3120	Egg
3820	Electric battery
3820	Electric motor
3420	Electric power
3420	Electric power distribution
3420	Electric power station
3820	Electrical appliance
2410	Electrical engineering
3820	Electrical equipment
3810	Electrical industry
3820	Electrical machinery
3420	Electricity
3820	Electrode
3820	Electronic computer USE Computer
0130	Electronic data processing
3820	Electronic equipment
3820	Electronic tube
3810	Electronics
3810	Electronics industry
2330	Employee
2320	Employment
126	



2320		Employment policy
3410		Energy
3410	Nuclear	energy
3410	Solar	energy
3410		Energy economics
3410		Energy source
3730		Engine
3730	Diesel	engine
3730	Steam	engine
2330		Engineer
2410		Engineering
2410	Agricultural	engineering
2410	Civil	engineering
2410	Electrical	engineering
1130	Environmental	engineering
2410	Hydraulic	engineering
2410	Industrial	engineering
2430		Engineering aspect USE Technical aspect
2610		Engineering design
2130		Enterprise
2130	Industrial	enterprise
2130	International	enterprise USE Multinational enterprise

2130	Multinational	enterprise
2130	Private	enterprise
2130	Public	enterprise
2140	Size of	enterprise
2210		Entrepreneur
2210		Entrepreneurship
1130		Environmental engineering
3550		Enzyme
3730		Equipment
3730	Agricultural	equipment
3730	Drilling	equipment
3820	Electrical	equipment
3820	Electronic	equipment
2510	Industrial	equipment
2510	Second hand	equipment
2950		Equipment cost
2440		Equipment output ratio
2510		Equipment replacement
3110		Esparto grass
3170		Essential oil
1470		Establishment of new industry
1470	Industrial	estate

0230		Estimating
3440		Ethylene
2210		Evaluation
2350	Job	evaluation
1480	Project	evaluation
3520		Evaporation
2440		Excess capacity
1640	Foreign	exchange
0120	Information	exchange
1430	Tax	exemption
0210		Experiment
0210		Experimental USE /Pilot project/,/prototype/
1540		Expert
0150		Expert report
3580		Explosive
1620		Export
1620	Capital	export
1640		Export of capital
2120		Export oriented industry
1620		Export promotion
1620		Export subsidy
1620		Export value

1620		Export volume
1620		Exporters association
1470	Agricultural	extension
1470	Industrial	extension
3630		Extruding
0240	Time	factor
2510		Factory
0140		Factory layout
2180	Factory location	USE Location of industry; Site Assessment
2210		Factory organization
2710	Trade	fair
1220		Family planning
3730	Farm implement	USE Agricultural machinery
3020	Commercial	farming
3020	Industrial	farming USE Commercial farming
3170	Animal	fat
3170	Oil and	fat
1450		Feasibility study
3030		Feed
3020		Feed production
3030	Animal	feeding
1240		Fellowship
130		

3550 Fermentation

3540 Fertilizer

3540 Fertilizer industry

3230 Coconut fibre

3230 Manmade fibre

3230 Natural fibre

3230 Synthetic fibre

3210 Wood fibre

3110 Fibre plant.

3210 Fibreboard

1540 Field activity

1540 Field advisor

3910 Film

3910 Film industry

0150 Final report

1430 Public finance

2910 Financial aspect

1530 Financial assistance

2940 Financial control

2950 Financial loss

2910 Financing

2910	Public financing
2910	Self financing
2530	Finished product
3230	Textile finishing
1430	Fiscal policy
3040	Fish
3170	Fish oil
3150	Fish protein concentrate
3010	Fishery
3140	Fishery product processing
3750	Fishing vessel
2540	Bathroom fixture USE Sanitary ware
3150	Flavouring
3230	Flax
3150	Flour
2940	Cash flow
0140	Flow chart
3530	Fluorine
3640	Aluminium foil
0140	Inquiry service folder
3150	Food

3150	Canned food
3150	Frozen food
3150	Irradiated food
3150	Protein rich food
3150	Food additive
3130	Food industry
3140	Food preservation
3020	Food production
3140	Food storage
3140	Food technology
0230	Forecast
1530	Foreign aid
1640	Foreign exchange
1640	Foreign investment
2130	Foreign owned
2330	Foreign skilled personnel
1610	Foreign trade
1610	Foreign trade information
3210	Forest product
3210	Forest product processing
3010	Forestry

3630		Forging
2910	Capital	formation
3630		Foundry
1310	Institutional	framework
2180		Free zone
3140		Freeze drying
3140		Freezing USE Refrigeration
3150		Frozen food
3110		Fruit
3110	Citrus	fruit
3110	Tropical	fruit
3150		Fruit jelly USE Fruit preserves
3160		Fruit juice
3150		Fruit preserves
3430		Fuel
3440	Motor	fuel
3430		Fuel supply
3240		Fur
3530		Furfural
3220		Furniture
1240		Further training
134		



3110	Garlic
3430	Gas
3430	Natural gas
3430	Gas distribution
3440	Gasoline USE Petrol
3550	Genetic improvement
1110	Geographic distribution
1110	Economic geography
3340	Glass
3340	Glass industry
3520	Glazing
0160	Glossary
3150	Monosodium glutamate
3240	Glove
2540	Capital goods
2540	Consumer goods
2540	Household goods
3240	Leather goods
3220	Sports goods
1310	Local government
1530	Government contribution
1460	Government policy

3140		Grading
3140		Grain milling USE Grain processing, Milling industry
3140		Grain processing
3530		Graphite
3110	Esparto	grass
3020		Greenhouse
1420		Gross national product
3110		Groundnut
1420	Economic	growth
1460	Industrial	growth
2930	Loan guarantee USE	Credit insurance
3560		Gum arabic
3320		Gypsum
3230		Hair
2510	Second	hand equipment
3710		Hand tool
0140		Handbook
2140		Handicraft
1470		Handicraft promotion
136		

2520	<b>Materials handling</b>
2520	<b>Mechanical handling USE Materials handling</b>
3920	<b>Harbour USE Port</b>
3020	<b>Harvesting</b>
1220	<b>Health</b>
3030	<b>Animal health</b>
1220	<b>Public health</b>
3410	<b>Heat recovery</b>
3630	<b>Heat treatment</b>
3520	<b>Heating</b>
2120	<b>Heavy industry</b>
3230	<b>Hemp</b>
3540	<b>Herbicide</b>
3240	<b>Hides and skins</b>
2930	<b>Hire purchase USE Instalment credit</b>
3020	<b>Horticulture</b>
3230	<b>Hosiery</b>
1220	<b>Hospital</b>
3930	<b>Hotel industry</b>
0120	<b>Clearing house</b>
2540	<b>Household goods</b>
3310	<b>Housing</b>

2310	Human resources
3520	Humidity
3020	Hybridization
2410	Hydraulic engineering
3730	Hydraulic machinery
3530	Hydrochloric acid
3420	Hydroelectric power
3530	Hydrogen
3520	Hydrogenation
3520	Hydrolysis
1220	Hygiene
1220	Immunology
3730	Farm implement USE Agricultural machinery
1480	Project implementation
1410	Economic implication
1620	Import
1630	Import restriction
1460	Import substitution
1620	Import volume
3550	Genetic improvement

1240	In plant training
1470	Incentive
1430	Tax incentive
2370	Wage incentive
2830	Income
1420	National income
2830	Income distribution
2830	Income redistribution
0120	Indexing
1470	Industrial administration
2610	Industrial application
2180	Industrial area
1530	Industrial assistance USE Technical assistance
2930	Industrial bank
2910	Industrial capital
3530	Industrial chemicals USE Chemicals
2180	Industrial concentration
2210	Industrial consulting
2170	Industrial cooperative
2610	Industrial design USE Engineering design
1460	Industrial development

1470	Industrial development agency
1450	Industrial development survey
1410	Industrial economics
2410	Industrial engineering
2130	Industrial entreprise
2510	Industrial equipment
1470	Industrial estate
1470	Industrial extension
3020	Industrial farming USE Commercial farming
1460	Industrial growth
2420	Industrial information
1470	Industrial institution
2150	Industrial integration
2180	Industrial location USE Location of industry
2210	Industrial management
1460	Industrial planning
1460	Industrial policy
2530	Industrial product*
2440	Industrial production

---

\*Check the *Classified List* carefully before using!

1470	Industrial programming
1480	Industrial project
1470	Industrial promotion
2620	Industrial property
2210	Industrial relations USE Labour relations
2610	Industrial research
2350	Industrial safety
2120	Industrial sector
1470	Industrial service
2560	Industrial standards institute USE Standards institute
1470	Industrial subsidy
2370	Industrial wage
2530	Industrial waste
1460	Industrialization
1460	Industrialization policy
1420	Industrialized country USE Developed country
2110	<b>Classification of industries</b>
2120	<b>Industry*</b>
3610	<b>Aluminium industry</b>
3740	<b>Automobile industry</b>

---

\*Check the *Classified List* carefully before using!

3130	Beverage industry
3310	Building industry USE Construction industry
3320	Cement industry
3330	Ceramics industry
1470	Chamber of industry
3510	Chemical industry
3310	Construction industry
2140	Cottage industry
3130	Dairy products industry
3810	Electrical industry
3810	Electronics industry
1470	Establishment of new industry
2120	Export oriented industry
3540	Fertilizer industry
3910	Film industry
3130	Food industry
3340	Glass industry
2120	Heavy industry
3930	Hotel industry
3760	Instrumentation industry
3610	Iron and steel industry



3240	Leather industry
2120	Light industry
2180	Location of industry
3710	Machine tool industry
3730	Machinery industry
3130	Meat industry
3710	Metalworking industry
3130	Milling industry
1470	Ministry of industry USE Industrial administration
3740	Motor vehicle industry
2130	Nationalized industry
3170	Oil industry USE Oil and fat; Petroleum industry
3760	Optical industry
3510	Petrochemical industry
3440	Petroleum industry
3560	Pharmaceutical industry
3570	Plastics industry
3270	Printing industry
3210	Pulp and paper industry
3810	Radio industry USE Telecommunications industry
2180	Relocation of industry

3230	Rope industry
3250	Rubber industry
2140	Rural industry
2120	Service industry
2140	Small scale industry
3610	Steel industry USE Iron and steel industry
3130	Sugar industry
3910	Telecommunications industry
3230	Textile industry
3260	Tobacco industry
2110	Industry profile
1640	Inflation
1410	Economic information
1610	Foreign trade information
2420	Industrial information
2210	Management information system
2810	Market information
2420	Technical information
2420	Technological information USE Industrial information
0120	Information exchange
0120	Information service
144	

0120		Information storage and retrieval system USE Information system
0120		Information system
2210	Management	information system
2180		Infrastructure
3920		Inland water transport
2430		Innovation
0220		Input output analysis
0220		Input output table
0140		Inquiry Service folder
3540		Insecticide
2930		Instalment credit
0210	Research	institute
2560	Standards	institute
2560	Industrial standards	institute USE Standards institute
1240	Technological	institute
1530	Aid	institution
1470	Industrial	institution
1310		Institutional framework
1240	Programmed	instruction
2330		Instructor
3760		Instrument

3760	Measuring instrument
3760	Medical instrument
3760	Optical instrument
3760	Instrumentation industry
3820	Insulator
2930	Insurance
2930	Credit insurance
1520	Economic integration
2150	Industrial integration
2150	Vertical integration
2430	Capital intensive
2430	Labour intensive
2950	Interest
1210	Public interest
1520	Intergovernmental organization
1460	Interindustry relations
2430	Intermediate technology
1510	International
1520	International cooperation
1460	International division of labour
2130	International enterprise USE Multinational enterprise

1330		International law
1520		International organization
1520		International relations
1240		Interplant training
1510		Interregional
2920		Investment
2920	Capital	investment
1640	Foreign	investment
2920	Private	investment
2920	Public	investment
2920		Investment policy
2920		Investment promotion
2920		Investment return
3620		Iron
3610		Iron and steel industry
3620		Iron ore
3150		Irradiated food
3520		Irradiation
3530	Radioactive	isotope

3150	Jam USE Fruit preserves
3150	Fruit jelly USE Fruit preserves
4010	Jewellery
3710	Dies and jigs
2320	Job description
2350	Job evaluation
1480	Joint project
2130	Joint venture
3160	Fruit juice
3230	Jute
3230	Kenaf
3440	Kerosene
2540	Kitchen ware USE Household goods
3230	Knitting
2430	Knowhow
2430	Technological knowhow USE Knowhow
0210	Laboratory
2310	Labour
1460	International division of labour
2950	Labour cost
148	

2430		labour intensive
2310		Labour market
2310		Labour mobility
2440		Labour productivity
2210		Labour relations
2310		Labour shortage
3820		Lamp
1210		Land settlement
3120		Lanolin
3250		Latex
1330		Law
1330	International	law
2620	Patent	law
0140	Factory	layout
3620		Lead
3530	Tetraethyl	lead
2930		Lease
1420		Least developed country
3240		Leather
3240		Leather goods
3240		Leather industry
1330		Legal aspect

1330	Legislation
1320	Local level
1320	National level
1320	Regional level
1630	Trade liberalization
2620	Licence
2620	Licensing
3110	Licorice USE Liquorice
3820	Light bulb USE Lamp
2120	Light industry
3320	Lime
2520	Assembly line
0220	Linear programming
3110	Liquorice
0140	List of documents
0140	List of participants
3030	Live animal
3030	Livestock
2830	Standard of living
3920	Loading
2930	Loan
2930	Loan guarantee USE Credit insurance
150	



3040		Lobster USE Shellfish
1480		Local cost
1310		Local government
1320		Local level
2180	Factory	location USE Location of industry; Site assessment
2180	Industrial	location USE Location of industry
2180		Location of industry
3730		Lock
3750		Locomotive
0240		Long term
3740		Lorry USE Truck
2950	Financial	loss
3440		Lubricant
3150		Macaroni
3730	Office	Machine
3730	Sewing	machine
2410		Machine capacity
3710		Machine tool
3710		Machine tool industry

3730		Machinery
3730	Agricultural	machinery
3730	Building	machinery
3730	Earthmoving	machinery
3820	Electrical	machinery
3730	Hydraulic	machinery
2950		Machinery cost USE Equipment cost
3730		Machinery industry
3630		Machining
1410		Macroeconomics
3530		Magnesium
2520		Maintenance and repair
3110		Maize
2210	Decision	making
1230		Malnutrition
3550		Malt
2210		Management
2210	Business	management
2210	Industrial	management
1120	Water	management
2210		Management consulting
1240		Management development
152		

2210		Management information system
2210		Management technique
2210		Manager
1480	Project	manager
3620		Manganese
3230		Manmade fibre
2320		Manning table
2310		Manpower
2310		Manpower need
2320		Manpower policy USE Employment policy
2330		Manual worker
2210		Manufacturers association
2120		Manufacturing
3260	Cigar	manufacturing USE Tobacco industry
3260	Cigarette	manufacturing USE Tobacco industry
0140		Map
3320		Marble
2810		Market
2910	Capital	market
1520	Common	market
2810	Domestic	market

2310	Labour market
2810	World market
1440	Market economy
2810	Market information
2710	Marketing
2710	Cooperative marketing
2170	Marketing cooperative
3150	Marmalade-USE Fruit preserves
3910	Mass communication
2430	Mass production
3210	Match
3320	Building material
3330	Clay building material
1240	Educational material
2530	Raw material
3330	Refractory material
2520	Materials handling
0220	Mathematical analysis
3760	Measuring instrument
3120	Meat
3130	Meat industry
154	

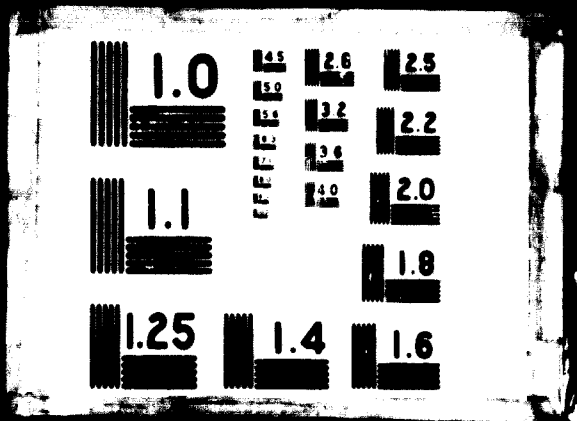
3140		Meat processing USE Meat industry
3120		Meat product
2520		Mechanical handling USE Materials handling
2430		Mechanization
3020	<b>Agricultural</b>	mechanization
3760		Medical instrument
3110		Medicinal plant
0240		Medium term
0110		Meeting
1520		Member country
1520		Membership
0140	<b>Aide</b>	memoire
3620		Mercury
2150		Merger
3620		Metal
3620	<b>Nonferrous</b>	metal
3620	<b>Precious</b>	metal
3640	<b>Scrap</b>	metal USE Metal scrap
3640	<b>Sheet</b>	metal USE Metal sheet
3630		Metal cutting
3630		Metal drawing
3640		Metal scrap



**74.09.23**

4 OF 5

05248



3640	Metal sheet
3630	Metallizing
3610	Metallurgy
3710	Metalworking industry
2210	Methodology
2560	Metrology
3530	Mica
3550	Microbiology
1410	Microeconomics
3550	Microorganism
2330	Migrant worker
3120	Milk
3140	Milk processing USE Dairy products industry
3120	Milk product USE Dairy product
3110	Millet
3140	Grain milling USE Grain processing
3130	Milling industry
1120	Mineral resources
3160	Mineral water
2120	Mining
1470	Ministry of industry USE Industrial administration



0150		Mission report
2530	Product	mix
1440		Mixed economy
1240		Mobile demonstration workshop
2310	Labour	mobility
0220		Model
2430		Modernization
3040		Mollusc USE Shellfish
1640		Monetary policy
1640		Money USE Currency
2150		Monopoly
3150		Monosodium glutamate
3910		Motion picture USE Film
3730		Motor USE Electric motor; Engine
3820	Electric	motor
3440		Motor fuel
3740		Motor vehicle
3740		Motor vehicle industry
3740		Motorcycle
3710		Mould
1510		Multilateral
2130		Multinational enterprise

1480		Multipurpose project
3550		Mutation
3440		Naphtha
1420	Gross	national product
1430		National budget
1420		National economy
1420		National income
1320		National level
1460		National plan
1460		National planning
1460		Nationalization
2130		Nationalized industry
3230		Natural fibre
3430		Natural gas
1120		Natural resources
1240	Educational	need
2310	Manpower	need
3920	Road	network
0220		Network analysis USE Systems analysis
0120		Network of correspondents
158		

1470	<b>Establishment of</b>	<b>new industry</b>
3210		<b>Newsprint</b>
3620		<b>Nickel</b>
3530		<b>Nitric acid</b>
3530		<b>Nitrogen</b>
3160		<b>Nonalcoholic beverage USE Soft drink</b>
1640		<b>Nonconvertible currency</b>
3620		<b>Nonferrous metal</b>
1520		<b>Nongovernmental organization</b>
1110		<b>North</b>
3410		<b>Nuclear energy</b>
3110	<b>Cashew</b>	<b>nut</b>
1230		<b>Nutrition</b>
3230		<b>Nylon USE Synthetic fibre</b>
2430	<b>Technological</b>	<b>obsolescence</b>
1120		<b>Ocean USE Sea</b>
3730		<b>Office machine</b>
3170	<b>Edible</b>	<b>oil</b>
3170	<b>Essential</b>	<b>oil</b>
3170	<b>Fish</b>	<b>oil</b>
3170	<b>Olive</b>	<b>oil</b>

3170	Palm oil
3440	Residual oil
3170	Vegetable oil
3170	Oil and fat
3170	Oil industry USE Oil and fat; Petroleum industry
3110	Oil palm
3110	Oil plant
3110	Oilseed
2150	Oligopoly
3170	Olive oil
3110	Onion
2430	Continuous operation
1480	Plan of operation
0220	Operational research
3760	Optical industry
3760	Optical instrument
3620	Ore
3620	Aluminium ore USE /Bauxite/; /Aluminium/ /ore/ (for non-bauxite ores)
3620	Iron ore
3630	Ore dressing
3630	Ore processing
3530	Organic acid
160	

2210	Factory	organization
1520	Intergovernmental	organization
1520	International	organization
1520	Nongovernmental	organization
2360	Professional	organization
2210	Work	organization
2210		Organizational aspect
2120	Export	oriented industry
2440	Equipment	output ratio
0220	Input	output analysis
2440	Cost	output ratio
0220	Input	output table
2440		Overproduction
2130	Foreign	owned
1440	Public	ownership
3530		Oxygen
3040		Oyster USE Shellfish
2730		Packaging
3580		Paints and varnishes
3110	Oil	palm
3170		Palm oil

3210		Paper
3210	Pulp and	paper industry
2520	Spare	part
0140	List of	participants
1440	State	participation
3210		Particle board
2620		Patent
2620		Patent law
1640	Balance of	payments
3110		Peanut USE Groundnut
3240		Pelt USE Hides and skins
4010		Pen
3580		Perfume
1540	Counterpart	personnel
1540	Development	personnel
2330	Foreign skilled	personnel
2330	Technical	personnel
1130		Pest control
3540		Pesticide
3510		Petrochemical industry
3530		Petrochemicals

3440		Petrol
3440		Petroleum
3440		Petroleum by product USE /Petroleum/ /By product/
3440		Petroleum industry
3440		Petroleum product
3440		Petroleum refinery
3440		Petroleum resources
3560		Pharmaceutical
3560		Pharmaceutical industry
3530		Phosphate
3530		Phosphoric acid
3530		Phosphorus
3910	Motion picture	USE Film
2610		Pilot plant
1480		Pilot project
3110		Pineapple
3640		Pipe
3920		Pipeline
1460	Development	plan
1460	National	plan
2210	Working	plan

1480	Plan of operation
1440	Planned economy
1460	Planning
1460	Development planning
1460	Economic planning
1460	Industrial planning
1220	Family planning
1460	National planning
1460	Regional planning
3110	Fibre plant
1240	In plant training
3110	Medicinal plant
3110	Oil plant
2610	Pilot plant
3410	Power plant
3210	Wood plastic combination
3570	Plastics
3570	Plastics industry
3640	Tin plate
3630	Plating
3620	Platinum
3210	Plywood
2930	Credit policy



1630 Customs policy

1460 Development policy

1460 Economic policy

1240 Educational policy

2320 Employment policy

1430 Fiscal policy

1460 Government policy

1460 Industrial policy

1460 Industrialization policy

2920 Investment policy

2320 Manpower policy USE Employment policy

1640 Monetary policy

2960 Price policy

1630 Tariff policy

1610 Trade policy

2370 Wage policy

1130 Pollution control

3570 Polyvinyl chloride

1210 Population

3920 Port

3320 Portland cement

3530		Potash
3530		Potassium
3110		Potato
1420	Development	potential
3330		Pottery USE Ceramic
3420	Electric	power
3420	Electric	power distribution
3420	Electric	power station
3420	Hydroelectric	power
2830	Purchasing	power
3410	Steam	power
3410		Power consumption
3410		Power plant
3410		Power resources
3410		Power supply
3620		Precious metal
3310		Prefabricated building
1630		Preferential tariff
1450		Preinvestment survey
3140	Food	preservation
3150	Fruit	preserves

3140		Preserving
2960		Price
2960	Administered	price
2960		Price control
2960		Price policy
2960		Price support
2960		Pricing
3010		Primary sector
3270		Printing industry
1530		Private aid
2130		Private enterprise
2920		Private investment
1440		Private sector
3520	Coating	process
2550		Process control
2430		Processing*
3140	Agri product	processing
0130	Data	processing
0130	Electronic data	processing
3140	Fishery product	processing

---

\*Check the *Classified List* carefully before using!

3210	Forest product	processing
3140	Grain	processing
3140	Meat	processing USE Meat industry
3140	Milk	processing USE Dairy products industry
3630	Ore	processing
3210	Wood	processing
2530		Product*
3020	Agricultural	product
3140	Agri	product processing
3120	Animal	product
3150	Bakery	product
2530	By	product
2530	Choice of	product
2160	Competitive	product
3120	Dairy	product
3130	Dairy	products industry .
2530	Finished	product
3140	Fishery	product processing
3210		Forest product
3210	Forest	product processing
1420	Gross national	product

---

\*Check the *Classified List* carefully before using!

3130	Industrial product*
3120	Meat product
3120	Milk product USE Dairy product
3440	Petroleum product
3440	Petroleum by product USE /Petroleum/ /by product/
2530	Semimanufactured product
3210	Wood product
2610	Product design
2610	Product development
2530	Product mix
1460	Domestic production
3020	Feed production
3020	Food production
2440	Industrial production
2430	Mass production
2440	World production
2440	Production capacity
2550	Production control
2170	Production cooperative
2950	Production cost
2560	Production standard

---

\*Check the *Classified List* carefully before using!

2440		Production statistics
2440		Production target
2440		Productivity
2440	Labour	productivity
3130	Dairy	products industry
2360		Professional organization
2110	Industry	profile
2160		Profit
2370		Profit sharing
2160		Profitability
0130	Computer	programme
0210	Research	programme
1240	Training	programme
0140	Work	programme
1240		Programmed instruction
1470	Industrial	programming
0220	Linear	programming
2430	Technical	progress USE Technological change
1530	Aid	project
1480	Choice of	project USE Project selection
1480	Development	project
170		

1480	Industrial project
1480	Joint project
1480	Multipurpose project
1480	Pilot project
1480	Project authorization
1480	Project design
1480	Project evaluation
1480	Project implementation
1480	Project manager
1480	Project request
1480	Project selection
0230	Projection
1620	Export promotion
1470	Handicraft promotion
1470	Industrial promotion
2920	Investment promotion
2710	Sales promotion
2620	Industrial property
1630	Protectionism
3150	Protein
3150	Fish protein concentrate

3150	Protein rich food
2610	Prototype
2130	Public enterprise
1430	Public finance
2910	Public financing
1220	Public health
1210	Public interest
2920	Public investment
1440	Public ownership
1470	Public relations
1440	Public sector
1310	Public service
1310	Public utilities USE Public service
1310	Public works
3210	Pulp
3210	Pulp and paper industry
3730	Pump
2930	Hire purchase USE Instalment credit
2720	Purchasing
2830	Purchasing power
3570	PVC USE Polyvinyl chloride
172	



2550	Quality control
2560	Quality standard
0140	Questionnaire
1630	Quota
3810	Radio industry USE Telecommunications industry
3820	Radio set
3530	Radioactive isotope
3920	Railway
3230	Ramie
3110	Rape
3620	Rare earth
2440	Cost output ratio
2440	Equipment output ratio
3110	Rattan
2530	Raw material
3510	Chemical reactor
0140	Recommendation
0140	Summary record
3820	Tape recorder
0130	Data recording
3410	Heat recovery
2320	Recruitment

2830	Income	redistribution	
1620		Reexport	
3440	Petroleum	refinery	
3130	Sugar	refinery	USE Sugar industry
3520		Refining	
1310	Administrative	reform	
3330		Refractory material	
3140		Refrigeration	
1210		Refugee	
1110	Economic	region	
1510		Regional	
1520		Regional agency	
1520		Regional cooperation	
1320		Regional level	
1460		Regional planning	
1330		Regulation	
1610	Trade	regulation	
2920		Reinvestment	
1520	Economic	relations	
2210	Industrial	relations	USE Labour relations
1460	Interindustry	relations	
174			

1520	International relations
2210	Labour relations
1470	Public relations
2180	Relocation of industry
2520	Maintenance and repair
2520	Repair shop
2510	Equipment replacement
0150	Report
0150	Annual report
0150	Expert report
0150	Final report
0150	Mission report
1480	Project request
0210	Research
2610	Industrial research
0220	Operational research
2610	Research and development
0210	Research institute
0210	Research programme
3440	Residual oil
3210	Wood residue USE Woodwaste

3580		Resin
0140		Resolution
1460	Allocation of	resources
1420	Economic	resources
2310	Human	resources
1120	Mineral	resources
1120	Natural	resources
3440	Petroleum	resources
3410	Power	resources
0140		Restricted
1630	Import	restriction
1240		Retraining
0120	Information storage and	retrieval system USE Information system
2920	Investment	return
3110		Rice
3110		Rice bran
3150	Protein	rich food
1120		River
3920		Road network
3920		Road transport
3630		Rolling
176		

3750		Rolling stock
3230		Rope industry
3250		Rubber
3250	Synthetic	rubber
3250		Rubber industry
1110		Rural area
1210		Rural development
2140		Rural industry
2330		Rural worker
2350	Industrial	safety
2710		Sales promotion
3530		Salt
3320		Sand
2540		Sanitary ware
1130		Sanitation
3110		Saracen wheat USE Buckwheat
2830		Saving
2140	Economy of	scale
2140	Small	scale industry
1240	Technical	school
3640	Metal	scrap

3640	Scrap metal USE Metal scrap
1120	Sea
3920	Sea transport
3110	Seaweed
1530	Second Development Decade
2510	Second hand equipment
2120	<b>Industrial sector</b>
3010	<b>Primary sector</b>
1440	<b>Private sector</b>
1440	<b>Public sector</b>
1480	<b>Project selection</b>
2910	<b>Self financing</b>
2530	<b>Semimanufactured product</b>
0110	<b>Seminar</b>
1310	<b>Civil service</b>
1470	<b>Common service</b>
1470	<b>Industrial service</b>
0120	<b>Information service</b>
0140	<b>Inquiry Service folder</b>
1310	<b>Public service</b>
1210	<b>Social service</b>
178	

2120	Service industry
3820	Radio set
3820	Television set
1210	Land settlement
1130	Sewage treatment
3730	Sewing machine
2370	Profit sharing
3640	Sheet metal USE Metal sheet
3640	Metal sheet
3040	Shellfish
2350	Shift work
3750	Shipbuilding
3240	Shoe
2520	Repair shop
0240	Short term
2310	Labour shortage
3040	Shrimp USE Shellfish
3530	Sodium silicate
3530	Silicon
3230	Silk
3020	Silo
2540	Sink USE Sanitary ware

3630	Sinter
3230	Sisal
2180	Site assessment
1420	Economic situation USE Economic conditions
2140	Size of enterprise
2320	Skill
2330	Skilled worker
2330	Foreign skilled personnel
2430	Advanced skills and technology
3240	Hides and skins
3640	Slag
3030	Slaughtering
2140	Small scale industry
3630	Smelting
3140	Smoking
3580	Soap
1210	Social
1210	Social aspect
1210	Social change
2950	Social cost
1210	Social service
1440	Socialist country
180	



3530		Soda
3530	Caustic	soda
3530		Soda ash USE Sodium carbonate
3530		Sodium
3530		Sodium carbonate
3530		Sodium silicate
3160		Soft drink
1120		Soil
3410		Solar energy
3580		Solvent
3110		Sorghum
3410	Energy	source
1110		South
3110		Soybean
2520		Spare part
2150		Specialization
3210	Tree	species
2560		Specifications
3150		Spice
3230		Spinning
3220		Sports goods
2560		Standard
2560	Production	standard

2560	Quality	standard
2830		Standard of living
2560		Standardization
2560		Standards institute
2560	Industrial	standards institute USE Standards institute
1230		Staple diet
3150		Starch
1440		State participation
3420	Electric power	station
0220		Statistical analysis
0140		Statistics
2440	Production	statistics
3730		Steam engine
3410		Steam power
3620		Steel
3610	Iron and	steel industry
3610		Steel industry USE Iron and steel industry
3520		Sterilization
2720		Stock
3750	Rolling	stock
3320		Stone
2720		Storage
182		

3140	Cold storage
3140	Food storage
0120	Information storage and retrieval system USE Information system
1420	Economic structure
1450	Case study
1450	Comparative study
1450	Feasibility study
2350	Time study
2350	Work study
2150	Subcontracting
1620	Export subsidy
1470	Industrial subsidy
1460	Import substitution
3150	Sugar
3150	Beet sugar
3150	Cane sugar
3110	Sugar beet
3110	Sugar cane
3130	Sugar industry
3130	Sugar refinery USE Sugar industry
3530	Sulphate

3530		Sulphur
3530		Sulphuric acid
0140		Summary
0140		Summary record
2330		Supervisor
2810		Supply
3430	Fuel	supply
3410	Power	supply
1120	Water	supply
2810		Supply and demand
2960	Price	support
1450		Survey
1450	Economic	survey
1450	Industrial development	survey
1450	Preinvestment	survey
3150		Sweets and candy
3520		Synthetic
3230		Synthetic fibre
3250		Synthetic rubber
0120	Classification	system
0120	Information storage and retrieval	system USE Information system

0120	Information system
0210	Management information system
0220	Systems analysis
0210	Systems design
0220	Input output table
2320	Manning table
3240	Tanning
3820	Tape recorder
2440	Production target
1630	Tariff
1630	Preferential tariff
1630	Tariff policy
1430	Tax
1430	Turnover tax
1430	Tax agreement
1430	Tax exemption
1430	Tax incentive
1430	Taxation
3110	Tea
1240	Teaching

2430		Technical aspect
1530		Technical assistance
1240		Technical education
2420		Technical information
2330		Technical personnel
2430		Technical progress USE Technological change
1240		Technical school
2330		Technician
2210	Management	technique
2430		Technological change
2420		Technological information USE Industrial information
1240		Technological institute
2430		Technological knowhow USE Knowhow
2430		Technological obsolescence
2430		Technology
2430	Advanced skills and	technology
2430	Choice of	technology
3140	Food	technology
2430	Intermediate	technology
3210	Wood	technology
2430		Technology transfer

3910	Telecommunications industry
3910	Telegraph
3910	Telephone
3910	Television
3820	Television set
3520	Temperature
0240	Long term
0240	Medium term
0240	Short term
0160	Terminology
2550	Testing
3530	Tetraethyl lead
3230	Textile
3230	Textile finishing
3230	Textile industry
3330	Tile
3210	Timber
3210	Tropical timber
0240	Time factor
2350	Time study
3620	Tin

3640		Tin plate
3250		Tire
3620		Titanium
3260		Tobacco
3260		Tobacco industry
3710		Tool
3710	Hand	tool
3710	Machine	tool
3710	Machine	tool industry
3930		Tourism
3220		Toy
3740		Tractor
1610		Trade
1620	Balance of	trade
1610	Foreign	trade
1610	Foreign	trade information
1610	World	trade USE Trade
1610		Trade agreement
1630		Trade barrier
2710		Trade fair
1630		Trade liberalization
1610		Trade policy
188		



1610		Trade regulation
2360		Trade union
1610		Trade volume
1240		Training
1240	Further	training
1240	In plant	training
1240	Interplant	training
1240	Vocational	training
1240		Training abroad
1530		Training assistance
1240		Training centre
1240		Training programme
1240		Training workshop USE Training centre
2430	Technology	transfer
3820		Transformer
3820	Distribution	transformer
3820		Transistor
0160		Translation
3920		Transport
3920	Air	transport
3920	Inland water	transport

3920	Road transport
3920	Sea transport
3920	Urban transport
3920	Transport economics
3750	Trawler
3630	Heat treatment
1130	Sewage treatment
1130	Water treatment
1520	Treaty
3210	Tree species
0230	Trend
1110	Tropical
3110	Tropical fruit
3210	Tropical timber
3740	Truck
2540	Tub USE Sanitary ware
3820	Electronic tube
3620	Tungsten
2720	Turnover
1430	Turnover tax

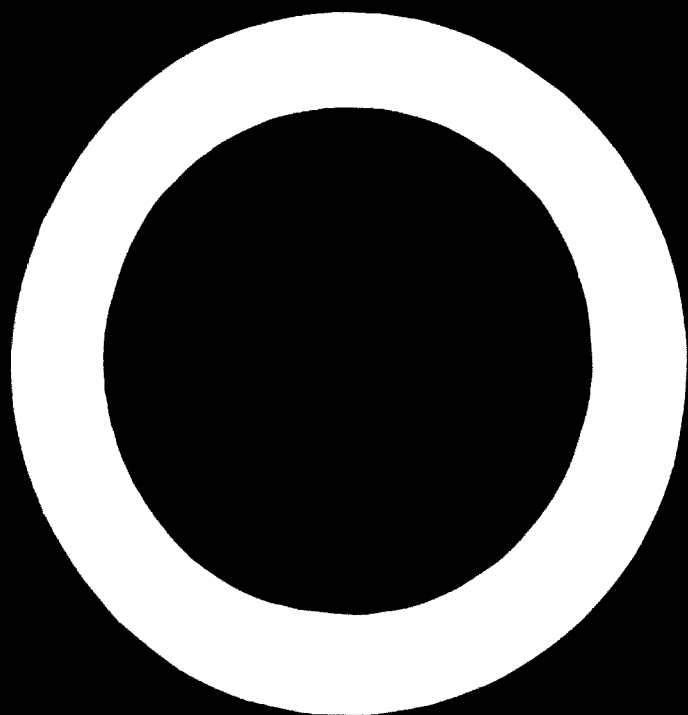
3520		Ultraviolet
2320		Unemployment
1630	Customs	union
2360	Trade	union
2330		Unskilled worker
3620		Uranium
1110		Urban area
1210		Urban development
3920		Urban transport
1210		Urbanization
3530		Urea
1310	Public Utilities USE	Public service
1130	Waste	utilization
1120	Water	utilization
3520		Vacuum
1620	Export	value
2610		Value added
2950		Value analysis
3580	Paints and	varnishes
3110		Vegetable
3170		Vegetable oil

3740	Motor vehicle
3740	Motor vehicle industry
3210	Veneer
2130	Joint venture
2150	Vertical integration
3750	Fishing vessel
1240	Audio visual aid
3560	Vitamin
1240	Vocational training
1620	Export volume
1620	Import volume
1610	Trade volume
1530	Voluntary contribution
2370	Wage
2370	Industrial wage
2370	Wage incentive
2370	Wage policy
2540	Kitchen ware USE Household goods
2540	Sanitary ware
2720	Warehouse
3020	Agricultural waste
2530	Industrial waste

1130	Waste disposal
1130	Waste utilization
3760	Watchmaking
1120	Water
3920	Inland water transport
3160	Mineral water
1120	Water management
1120	Water supply
1130	Water treatment
1120	Water utilization
3580	Wax
3230	Weaving
1130	Weed control
3630	Welding
1110	West
3110	Wheat
3110	Saracen wheat USE Buckwheat
3230	Wig
3160	Wine
3640	Wire
3210	Wood

3210	Wood fibre
3210	Wood plastic combination
3210	Wood processing
3210	Wood product
3210	Wood residue USE Woodwaste
3210	Wood technology
3210	Woodwaste
3230	Wool
2350	Shift work
2210	Work organization
0140	Work programme
2350	Work study
2330	Worker
2330	Manual worker
2330	Migrant worker
2330	Rural worker
2330	Skilled worker
2330	Unskilled worker
2910	Working capital
2350	Working conditions
2210	Working plan

1310	Public works
2510	Workshop
1240	Mobile demonstration workshop
1240	Training workshop USE Training centre
2820	World consumption
2810	World market
2440	World production
1610	World trade USE Trade
3230	Yarn
3550	Yeast
3020	Crop yield
3620	Zinc
2180	Free zone





# SUPPLEMENT 1: GEOGRAPHIC NAMES\*

Afars and Issas Territory

Afghanistan

Africa

- RT Arab country
- Mediterranean country
- NT Africa, south of Sahara
- East Africa
- English speaking Africa
- French speaking Africa
- Maghreb
- North Africa
- Sahara
- West Africa
- Names of individual African countries

Africa, south of Sahara

- BT Africa

Albania

Algeria

America

- NT Latin America
- North America
- South America
- Names of individual American countries

---

\*This Supplement reproduces Section 3 of the *ILO Descriptor List*, with some minor changes.

Andes

BT South America

Angola

Antarctic

Antigua USE West Indies

Arab country

RT Africa

Asia

Maghreb

Mediterranean country

Middle East

North Africa

Arab Republic of Egypt USE Egypt

Argentina

Asia

RT Arab country

Far East

Mediterranean country

NT Middle East

South East Asia

Names of individual Asian countries

Australia

Austria

Bahamas

Bahrain

Barbados

Basutoland USE Lesotho

Bechuanaland USE Botswana

Belgium

Bermuda

Bhutan

Bolivia

Borneo USE Indonesia; Malaysia; Brunei

Botswana

UF Bechuanaland

Brazil

British Commonwealth USE Commonwealth

British Honduras

British Oceania

UF Solomon Islands

BT Oceania

RT New Hebrides

NT Tonga

British Virgin Islands USE West Indies

Brunei

UF Borneo

Bulgaria

Burma

Burundi

Byelorussian SSR

Cambodia USE Khmer Republic

Cameroon

Canada

Canary Islands

Caribbean

RT Central America  
Latin America  
North America  
South America

NT West Indies  
Names of individual countries of the Caribbean

\* Central African Republic

Central America

BT North America  
RT Caribbean  
Latin America

Ceylon USE Sri Lanka

Chad

Chile

China

Colombia

Commonwealth

UF British Commonwealth

Comoro Islands

Congo Brazzaville

Congo Kinshasa USE Zaire

Costa Rica

Cuba

Cyprus

Czechoslovakia

Dahomey

Denmark

UF Faroe Islands

Greenland

Developed country

Developing country

UF Underdeveloped country

Dominica USE West Indies

Dominican Republic

East Africa

SN —east of the Rift Valley, i.e. Somali Republic, Kenya, Tanzania, Mozambique; may also include Uganda, etc.

Eastern Samoa USE USA Oceania

EC country

(European Community country)

UF ECSC country

European Common Market country

BT Europe

ECSC country USE EC country

(European Coal and Steel Community country)

Ecuador

**Egypt**

UF United Arab Republic  
Arab Republic of Egypt

**El Salvador**

UF Salvador

**English speaking Africa**

BT Africa

**Equatorial Guinea**

UF Spanish Guinea

**Ethiopia**

**Europe**

RT Mediterranean country

NT EC country

Scandinavia

Names of individual European countries

**European Common Market country** USE EC country

**Far East**

SN —China, Japan, Korea, South East Asia, Australia, New Zealand, etc.,  
and adjacent islands.

**Faroe Islands** USE Denmark

**Fiji**

**Finland**

**France**

**French Antilles**

UF Guadeloupe

Martinique

BT West Indies

**French Guiana**

French Oceania

UF French Polynesia

BT Oceania

RT New Hebrides

French Polynesia USE French Oceania

French speaking Africa

BT Africa

Gabon

Gambia

Germany (DR)

(Democratic Republic of Germany)

Germany (FR)

(Federal Republic of Germany)

Ghana

Gibraltar

Greece

Greenland USE Denmark

Guadeloupe USE French Antilles

Guatemala

Guinea

Guyana

Haiti

Hawaii

Honduras

Hong Kong

Hungary

Iceland

India

Indonesia

Iran

Iraq

Ireland

Israel

Italy

Ivory Coast

Jamaica

Japan

Jordan

Kenya

Khmer Republic  
UF Cambodia

Korea (DR)  
(Democratic Republic of Korea [North Korea])

Korea (R)  
(Republic of Korea [South Korea])

Kuwait



Laos

Latin America

BT America  
RT Caribbean  
Central America  
North America  
South America

Lebanon

Lesotho

UF Basutoland

Liberia

Libya

Liechtenstein

Luxembourg

Macao

Maghreb

BT Africa  
RT Arab country

Madagascar USE Malagasy Republic

Malagasy Republic

UF Madagascar

Malawi

UF Nyasaland

Malaysia

UF Sarawak  
Borneo

Maldivé Islands

Mali

Malta

Martinique USE French Antilles

Mauritania

Mauritius

Mediterranean country

RT Africa  
Arab country  
Asia  
Europe  
Middle East  
North Africa

Mekong Valley

BT South East Asia

Mexico

Mezzogiorno USE /South/ (or /South/ern) /Italy/

Middle East

SN —includes Iraq, Israel, Jordan, Lebanon, Persian Gulf states including Kuwait, Saudi Arabia, South Yemen, Syria, Yemen.

BT Asia

RT Arab country  
Mediterranean country

Mongolia (PR)

(People's Republic of Mongolia)

Montserrat USE West Indies

Morocco

Mozambique

Namibia  
UF South West Africa

Nauru

Nepal

Netherlands

Netherlands Antilles  
BT West Indies

New Guinea USE /Papua and New Guinea/ or West Irian Province of /Indonesia/

New Hebrides  
RT British Oceania  
French Oceania

New Zealand

Nicaragua

Niger

Nigeria

Non self governing territory USE /NSGT/

North Africa

SN —includes Morocco, Algeria, Tunisia, Libya, Egypt, Sudan and Ethiopia.

RT Arab country  
Mediterranean country  
Sahara

NT Maghreb  
Names of individual North African countries

North America

BT America

RT Caribbean

Latin America

NT Central America

Names of individual North American countries

Northern Rhodesia USE Zambia

Norway

NSGT

(Non-self-governing territory or territories)

Nyasaland USE Malawi

Oceania

UF Pacific Islands

NT British Oceania

French Oceania

USA Oceania

OECD country

(Organisation for Economic Co-operation and Development country)

Outer space

Overseas territory

Pacific Islands USE Oceania

Pakistan

Panama

Papua and New Guinea

UF New Guinea

Paraguay

Persian Gulf

SN -i.e., /Persian Gulf/ state(s)

Peru

Philippines

Poland

Portugal

Portuguese Guinea

Portuguese Timor  
UF Timor

Puerto Rico

Qatar

Reunion

Rhodesia  
UF Southern Rhodesia

Rumania

Rwanda

Sahara

BT Africa  
RT North Africa

Saint Kitts-Nevis USE West Indies

Saint Lucia USE West Indies

Saint Vincent USE West Indies

Salvador USE El Salvador

Samoa, Eastern USE USA Oceania

Samoa, Western USE Western Samoa

San Tome and Principe

Sarawak USE Malaysia

Saudi Arabia

Scandinavia

BT Europe

Senegal

Seychelles

Sierra Leone

Singapore

Socialist country

Solomon Islands USE British Oceania

Somali Republic

South Africa (R)

(Republic of South Africa)

South America

BT America

RT Caribbean

Latin America

NT Andes

Names of individual South American countries

South East Asia

SN -south of China and east of India including Indonesia and the Philippines.

NT Mekong Valley

Names of individual South East Asian countries

South West Africa USE Namibia

South Yemen USE Yemen (PDR)

Southern Rhodesia USE Rhodesia

Spain

Spanish Guinea USE Equatorial Guinea  
Sri Lanka UF Ceylon  
Sudan  
Surinam  
Swaziland  
Sweden  
Switzerland  
Syria  
  
Taiwan USE China  
Tanganyika USE Tanzania  
Tanzania  
    UF Tanganyika  
Thailand  
Tibet  
Timor USE Portuguese Timor  
Togo  
Tonga  
    BT British Oceania  
Trinidad and Tobago  
Tunisia  
Turkey  
  
Uganda  
UK  
    (United Kingdom of Great Britain and Northern Ireland)

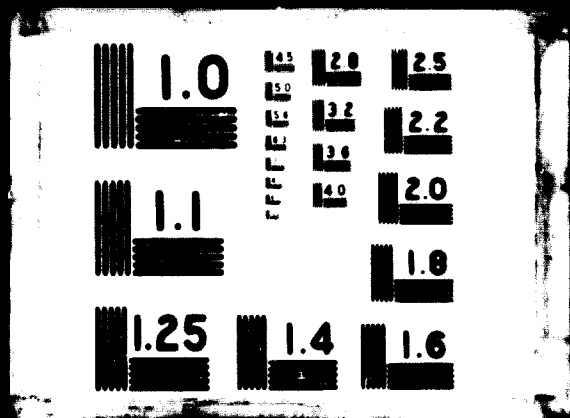


**74.09.23**



5 OF 5

05248



Ukrainian SSR

Underdeveloped country USE Developing country

United Arab Emirates

United Arab Republic USE Egypt

Upper Volta

Uruguay

USA

(United States of America)

USA Oceania

UF Samoa, Eastern

BT Oceania

USSR

(Union of Soviet Socialist Republics)

Vatican

Venezuela

Vietnam (DR)

(Democratic Republic of Vietnam [North Vietnam])

Vietnam (R)

(Republic of Vietnam [South Vietnam])

West Africa

BT Africa

West Indies

UF Antigua

British Virgin Islands

Dominica

Montserrat  
St. Kitts-Nevis  
St. Lucia  
St. Vincent  
BT Caribbean  
North America  
NT French Antilles  
Netherlands Antilles  
Names of individual islands

**Western Samoa**

UF Samoa, Western

**Yemen**

**Yemen (PDR)**

(People's Democratic Republic of Yemen)

UF South Yemen

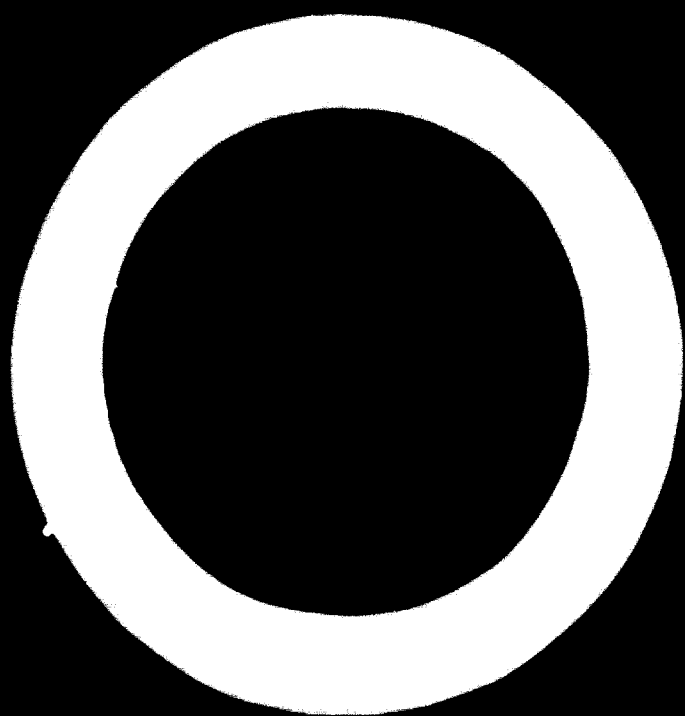
**Yugoslavia**

**Zaire**

UF Congo Kinshasa

**Zambia**

UF Northern Rhodesia



# **SUPPLEMENT 2: ROLE DESCRIPTORS**

**Role of Africa**

**Role of Arab Country**

**Role of Asia**

**Role of Australia**

**Role of Austria**

**Role of Belgium**

**Role of Brazil**

**Role of Byelorussian SSR**

**Role of Canada**

**Role of China**

**Role of CID**

**Role of Cuba**

**Role of Czechoslovakia**

**Role of Denmark**

**Role of Developed Country**

**Role of Developing Country**

**Role of EC Country**

**Role of Ecuador**

**Role of Egypt**

**Role of Ethiopia**

**Role of Europe**

Role of France  
Role of Germany  
Role of Germany (DR)  
Role of Germany (FR)  
Role of Greece  
Role of Hungary  
Role of ILO  
Role of India  
Role of Indonesia  
Role of Ireland  
Role of Israel  
Role of Italy  
Role of Japan  
Role of Jordan  
Role of Kuwait  
Role of Liberia  
Role of Mexico  
Role of Netherlands  
Role of New Zealand  
Role of Norway  
Role of OECD country  
Role of Pakistan  
Role of Philippines  
Role of Poland  
Role of Portugal  
Role of Saudi Arabia  
Role of Scandinavian country  
Role of Socialist country  
Role of South Africa (R)  
Role of Spain  
Role of Sweden

Role of Switzerland

Role of Syria

Role of Turkey

Role of UK

Role of Ukrainian SSR

Role of UN

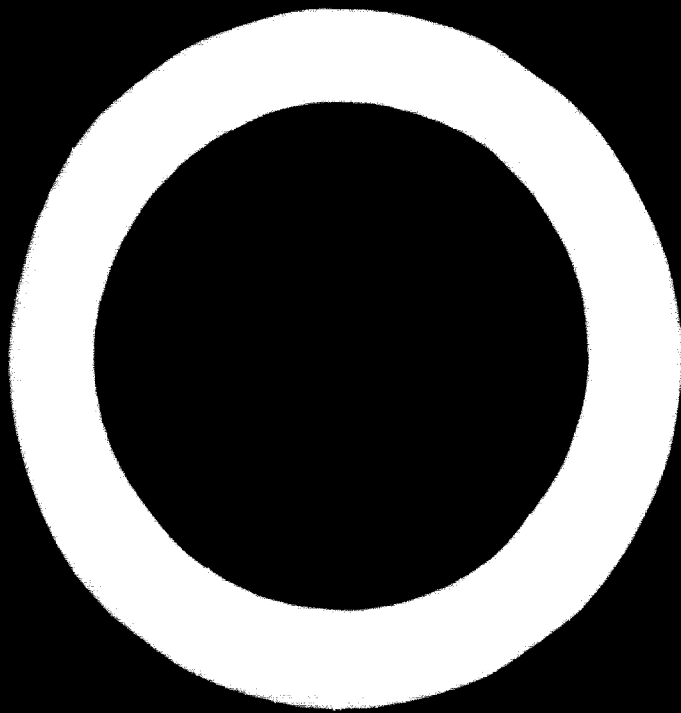
Role of UNIDO

Role of USA

Role of USSR

Role of WHO

Role of Yugoslavia





# **SUPPLEMENT 3: NATIONAL AND INTERNATIONAL ORGANIZATIONS**

**AFRASEC**

**(Afro-Asian Organization for Economic Co-operation)**

**Alliance for Progress**

**Andean Group**

**APO**

**(Asian Productivity Organization)**

**APPI**

**(International Association for the Promotion and Protection of Private Foreign Investments)**

**ASA**

**(Association of Southeast Asian States)**

**BIRPI**

**(United International Bureaux for the Protection of Intellectual Property)**

**CACEU**

**(Central African Customs and Economic Union)**

**CACM**

**(Central American Common Market)**

**UF SIECA**

**CARIFTA**

(Caribbean Free Trade Area)

**CECLA**

(Special Committee on Latin American Coordination)

**CEDIMOM**

(European Centre for Overseas Industrial Development)

**CENTO**

(Central Treaty Organization)

**CERN**

(European Organization for Nuclear Research)

**CID**

(Centre for Industrial Development)

UF UNCID

**CID Pub**

**CiOS**

(International Council of Scientific Management)

**Colombo Plan**

**COMECON**

(Council for Mutual Economic Assistance)

**COMECON Pub**

**Council of Europe**

**Council of Europe Pub**

**CPCM**

(Maghreb Permanent Consultative Committee)

**EACM**

(East African Common Market)

**EACSO**  
(East African Common Services Organization)

**EAMTC**  
(European Association of Management Training Centres)

**ECA** (Economic Commission for Africa)

**ECAFE**  
(Economic Commission for Asia and the Far East)

**ECE**  
(Economic Commission for Europe)

**ECLA**  
(Economic Commission for Latin America)

**ECOSOC**  
(Economic and Social Council of the UN)

**ECSC**  
(European Coal and Steel Community)

**ECSC Pub**

**EEC**  
(European Economic Community)

**EEC Pub**

**EFTA**  
(European Free Trade Association)

**EFTA Pub**

**EIB**  
(European Investments Bank)

**ESRO**  
(European Space Research Organization)

**EURATOM**  
(European Atomic Energy Community)

European Parliament

European Parliament Pub

FAO

(Food and Agriculture Organization of the UN)

FAO Pub

FID

(International Federation for Documentation)

GATT

(General Agreement on Tariffs and Trade)

GATT Pub

IACME

(International Association of Crafts and Small and Medium-sized Enterprises)

IAEA

(International Atomic Energy Agency)

IAEA Pub

IAESTE

(International Association for the Exchange of Students for Technical Experience)

IAPIT (International Association for the Protection of Industrial Property)

IBRD

(International Bank for Reconstruction and Development)  
UF World Bank

IBRD Pub

ICAI

(International Commission for the Agricultural and Food Industries)

ICAITI

(Central American Research Institute for Industry)

ICAO  
(International Civil Aviation Organization)

ICC  
(International Chamber of Commerce)

ICEM  
(Intergovernmental Committee for European Migration)

ICFTU  
(International Confederation of Free Trade Unions)

ICFTU Pub

ICJ  
(International Court of Justice)

IDA  
(International Development Association)

IDA Pub

IDB  
(Inter-American Development Bank)

IDB Pub

IDCAS  
(Industrial Development Centre for the Arab States)

IFAC  
(Industrial Federation of Automatic Control)

IFC  
(International Finance Corporation)

IFCTU  
(International Federation of Christian Trade Unions)

IFCTU Pub

III  
(International Institute for Industrial Planning)

ILO  
(International Labour Organisation [Office])

ILO Pub

IMCO  
(Intergovernmental Maritime Consultative Organization)

IMCO Pub

IMF  
(International Monetary Fund)

IMF Pub

IOE  
(International Organization of Employers)

ISO  
(International Organization for Standardization)

ISSA  
(International Social Security Association)

ISSA Pub

ITU  
(International Telecommunication Union)

ITU Pub

LAFTA  
(Latin American Free Trade Association)

League of Arab States

League of Nations

NATO  
(North Atlantic Treaty Organization)

**OAMPI**

(African and Malagasy Industrial Property Office)

**OAS**

(Organization of American States)

**OAS Pub**

**OAU**

(Organization of African Unity)

**OCAM**

(Organisation commune africaine et malgache)

UF UAMCE

**OCAS**

(Organization of Central American States—Organización de Estados Centro-americanos)

UF ODECA

**OCAS Pub**

**ODECA USE OCAS**

**OECD**

(Organisation for Economic Co-operation and Development)

**OECD Pub**

**OPEX**

(Programme for the Provision of Operational, Executive and Administrative Personnel)

**RCD**

(Regional Co-operation for Development)

**SEATO**

(South-East Asia Treaty Organization)

**SEATO Pub**

**SIECA USE CACM**

**SOEC Pub**

(Statistical Office of the European Communities)

**UAMCE USE OCAM**

**UIA**

(International Union of Architects)

**UIFO**

(Union of International Engineering Organizations)

**UIIL**

(International Union of Independent Laboratories)

**UN**

(United Nations)

**UN Pub**

**UN and Specialized Agencies**

**UN Regular Programme**

UF UNIDO Regular Programme

**UN SIS**

(United Nations Special Industrial Services—to provide assistance at short notice—jointly administered by UNDP and Executive Director of UNIDO)

**UN Special Fund**

**UN TA**

(United Nations Expanded Programme of Technical Assistance)

**UNCID USE CID**

**UNCTAD**

(United Nations Conference on Trade and Development)

**UNCTAD Pub**



**UNDP**

(United Nations Development Programme—created 1.1.65 by merging the United Nations Special Fund with the Expanded Programme of Technical Assistance)

**UNESCO**

(United Nations Educational, Scientific and Cultural Organization)

**UNESCO Pub**

**UNIAPAC**

(International Christian Union of Business Executives)

**UNICE**

(Union of Industries of the European Community)

**UNICEF**

(United Nations Children's Fund)

**UNICEF Pub**

**UNIDO**

(United Nations Industrial Development Organization)

**UNIDO Pub**

**UNIDO Mission**

**UNIDO Regular Programme USE UN Regular Programme**

**UPU**

(Universal Postal Union)

**UPU Pub**

**US AID**

(US Agency for International Development)

**WAITRO**

(World Association of Industrial and Technological Research Organizations)

**US AID Pub**

**WCL**  
(World Confederation of Labour -new [since 10.68] name of IFCTU)

**WCL Pub**

**WEU**  
(Western European Union)

**WFEO**  
(World Federation of Engineering Organizations)

**WFTU**  
(World Federation of Trade Unions)

**WHO**  
(World Health Organization)

**WHO Pub**

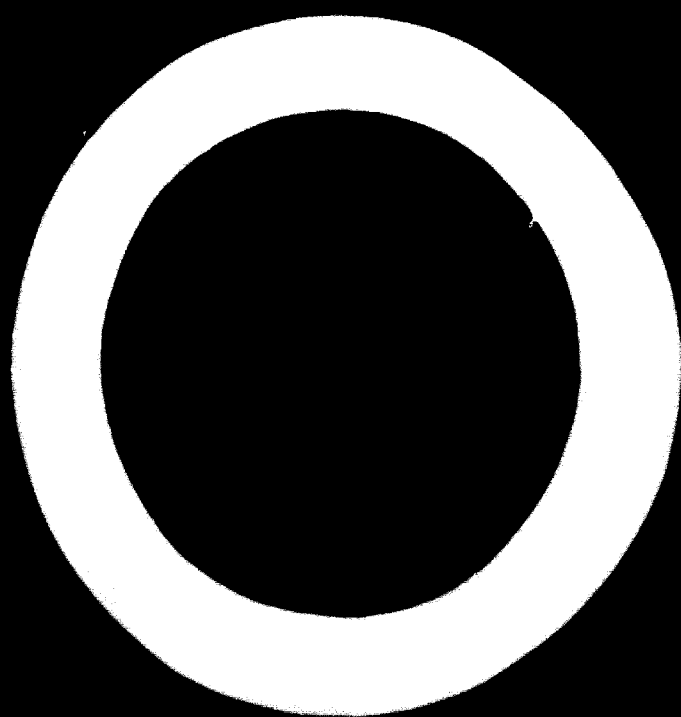
**WIPO**  
(World Intellectual Property Organization)

**WMO**  
(World Meteorological Organization)

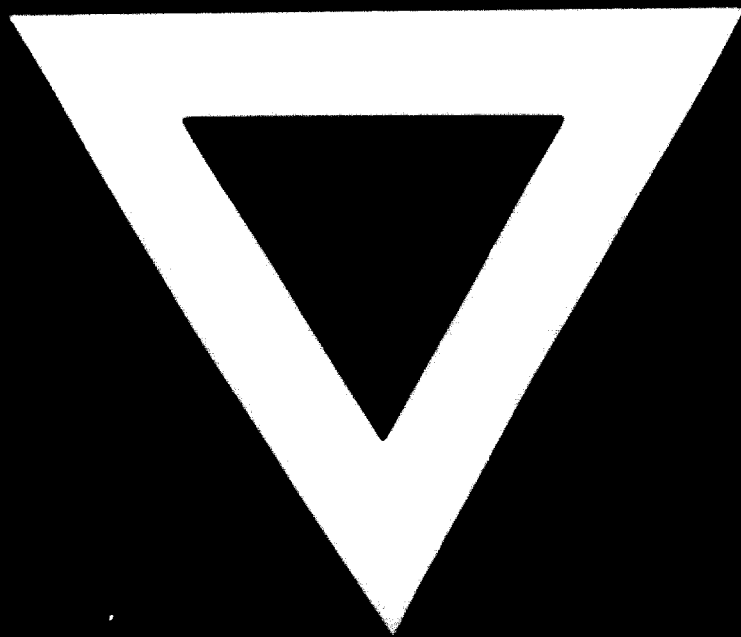
**World Bank USE IBRD**

**World Food Programme**









**74.09.23**